

UNITED STATES  
DEPARTMENT OF THE INTERIOR  
BUREAU OF LAND MANAGEMENT

APPLICATION FOR PERMIT TO DRILL OR REENTER

2005 DEC 12

FORM APPROVED  
OMB No. 1004-0137  
Expires March 31, 2007

5. Lease Serial No.  
NM 03358

6. If Indian, Allottee or Tribe Name  
FARMINGTON NM

7. If Unit or CA Agreement, Name and No.  
Northeast Blanco Unit

8. Lease Name and Well No.  
NEBU 63M

9. API Well No.  
30-045-33476

10. Field and Pool, or Exploratory  
Blanco Mesaverde/Pictured Cliffs

11. Sec., T. R. M. or Blk. and Survey or Area  
0 Sec. 1, T31N, R7W

12. County or Parish

13. State  
NM

1a. Type of work: ☒ DRILL ☐ REENTER

1b. Type of Well: ☐ Oil Well ☒ Gas Well ☐ Other ☐ Single Zone ☐ Multiple Zone

2. Name of Operator  
Devon Energy Production Company, L.P.

3a. Address PO Box 6459  
Farmington, NM 87419

3b. Phone No. (include area code)  
505-632-0244

4. Location of Well (Report location clearly and in accordance with any State requirements.)  
At surface 0 SW SE, Unit O, 890' FSL & 1,515' FEL  
At proposed prod. zone 0 SE SE, Unit P, 1,300' FSL & 1,300' FEL

14. Distance in miles and direction from nearest town or post office\*  
Approximately 9.5 miles

15. Distance from proposed\*  
location to nearest  
property or lease line, ft.  
(Also to nearest drig. unit line, if any) 890'

16. No. of acres in lease  
2,396.77

17. Spacing Unit dedicated to this well  
All 1/2 equivalent  
367.08 MV Acres & 181.40 PC Acres

18. Distance from proposed location\*  
to nearest well, drilling, completed,  
applied for, on this lease, ft.

19. Proposed Depth  
6,246 MD/6,209 VD

20. BLM/BIA Bond No. on file

21. Elevations (Show whether DF, KDB, RT, GL, etc.)  
GR 6,511'

22. Approximate date work will start\*  
04/01/2005

23. Estimated duration  
Unknown

24. Attachments

The following, completed in accordance with the requirements of Onshore Oil and Gas Order No. 1, shall be attached to this form:

- Well plat certified by a registered surveyor.
- A Drilling Plan.
- A Surface Use Plan (if the location is on National Forest System Lands, the SUPO shall be filed with the appropriate Forest Service Office).
- Bond to cover the operations unless covered by an existing bond on file (see Item 20 above).
- Operator certification
- Such other site specific information and/or plans as may be required by the authorized officer.

25. Signature *M.S. Zimmerman*  
Title Senior Operations Technician

Name (Printed/Typed)  
Melisa Zimmerman

Date  
12-8-05

Approved by *D. Manley*  
Title AFM

Name (Printed/Typed)

Date  
3/13/06

Office  
FFO

Application approval does not warrant or certify that the applicant holds legal or equitable title to those rights in the subject lease which would entitle the applicant to conduct operations thereon.  
Conditions of approval, if any, are attached.

Title 18 U.S.C. Section 1001 and Title 43 U.S.C. Section 1212, make it a crime for any person knowingly and willfully to make to any department or agency of the United States any false, fictitious or fraudulent statements or representations as to any matter within its jurisdiction.

\*(Instructions on page 2)

HOLD C104 FOR directional Survey

This action is subject to technical and procedural review pursuant to 43 CFR 3165.3 and appeal pursuant to 43 CFR 3165.4

✓  
DRILLING OPERATIONS AUTHORIZED ARE  
SUBJECT TO COMPLIANCE WITH ATTACHED  
"GENERAL REQUIREMENTS".

NMOC

OIL CONSERVATION DIVISION  
PO Box 2088  
Santa Fe, NM 87504-2088

Submit to Appropriate District Office  
841 State Lease - 4 Copies  
Fee Lease - 3 Copies

☐ AMENDED REPORT

## WELL LOCATION AND ACREAGE DEDICATION PLAT

1 API Number 30-045-33476		2 Pool Code 72319/80690		3 Pool Name Blanco Mesavende/S. Los Pinos Fields Pictured Cliffs	
4 Property Code 19641		5 Property Name NEBU			6 Well Number # 63M
7 OGRID No. 6137		8 Operator Name Devon Energy Production Company, L.P.			9 Elevation 6511

## <sup>10</sup> Surface Location

UL or Lot No.	Section	Township	Range	Lot Idn	Feet from the	North/South line	Feet from the	East/West line	County
<b>O</b>	<b>1</b>	<b>31 N</b>	<b>7 W</b>		<b>890</b>	<b>SOUTH</b>	<b>1515</b>	<b>EAST</b>	<b>SAN JUAN</b>

<sup>11</sup> Bottom Hole Location If Different From Surface

UL or lot no.	Section	Township	Range	Lot Idn	Feet from the	North/South line	Feet from the	East/West line	County
<b>P</b>	<b>1</b>	<b>31 N</b>	<b>7 W</b>		<b>1300</b>	<b>SOUTH</b>	<b>1300</b>	<b>EAST</b>	<b>SAN JUAN</b>

<sup>12</sup> Dedicated Acres <sup>13</sup> Joint or Infill 367.106 - Ec all 181.40 - PC E/eq	<sup>14</sup> Consolidation Code	<sup>15</sup> Order No. Rule 104 D.2.a.
--	----------------------------------	--

NO ALLOWABLE WILL BE ASSIGNED TO THIS COMPLETION UNTIL ALL INTERESTS HAVE BEEN CONSOLIDATED  
OR A NON-STANDARD UNIT HAS BEEN APPROVED BY THE DIVISION

5276'(R)

16

## <sup>17</sup> OPERATOR CERTIFICATION

I hereby certify that the information contained herein is true and complete to the best of my knowledge and belief.

M.S.-28  
Signature  
Melissa Zimmerman  
Printed Name  
Sr. Operations Tech.  
Title  
December 8, 2000  
Date

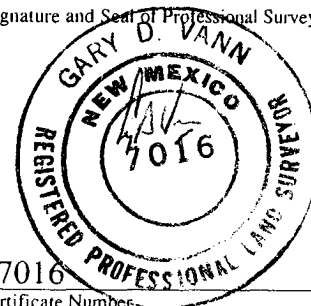
## 18 SURVEYOR CERTIFICATION

I hereby certify that the well location shown on this plat was plotted from field notes of actual surveys made by me or under my supervision, and that the same is true and correct to the best of my belief.

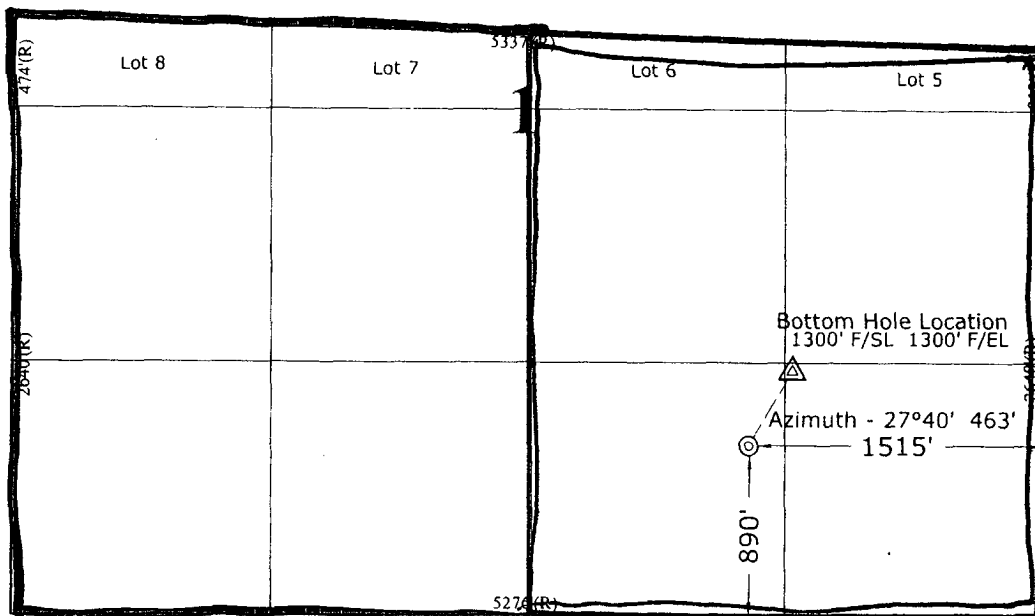
September 17, 2005

Date of Survey \_\_\_\_\_

Signature and Seal of Professional Surveyor



Certificate Numbers



Submit 3 Copies To Appropriate District Office

District I

1625 N. French Dr., Hobbs, NM 88240

District II

1301 W. Grand Ave., Artesia, NM 88210

District III

1000 Rio Brazos Rd., Aztec, NM 87410

District IV

1220 S. St. Francis Dr., Santa Fe, NM 87505

State of New Mexico  
Energy, Minerals and Natural Resources

OIL CONSERVATION DIVISION  
1220 South St. Francis Dr.  
Santa Fe, NM 87505

Form C-103  
March 4, 2004

WELL API NO.

30-045-33476

5. Indicate Type of Lease

STATE ☐ FEE ☐

6. State Oil & Gas Lease No.  
NM 03358

7. Lease Name or Unit Agreement Name

NORTHEAST BLANCO UNIT

8. Well Number

63M

9. OGRID Number

6137

10. Pool name or Wildcat

Mesaverde / Pictured Cliffs

SUNDRY NOTICES AND REPORTS ON WELLS

(DO NOT USE THIS FORM FOR PROPOSALS TO DRILL OR TO DEEPEN OR PLUG BACK TO A DIFFERENT RESERVOIR. USE "APPLICATION FOR PERMIT" (FORM C-101) FOR SUCH PROPOSALS.)

1. Type of Well:

Oil Well ☐ Gas Well ☒ Other

2. Name of Operator

Devon Energy Production Company, L.P.

3. Address of Operator

PO Box 6459, Navajo Dam, NM 87419

4. Well Location

Unit Letter O : 890' feet from the South line and 1,515' feet from the East line

Section 1 Township 31N Range 7W NMPM County - SAN JUAN

11. Elevation (Show whether DR, RKB, RT, GR, etc.)

GR 6,511'

Pit or Below-grade Tank Application (For pit or below-grade tank closures, a form C-144 must be attached)

Pit Location: UL O Sect 1 Twp 31N Rng 7W Pit type Drilling Depth to Groundwater >100' Distance from nearest fresh water well >1000'

Distance from nearest surface water >1000' Below-grade Tank Location UL  Sect  Twp  Rng  ;

feet from the  line and  feet from the  line

12. Check Appropriate Box to Indicate Nature of Notice, Report or Other Data

NOTICE OF INTENTION TO:

PERFORM REMEDIAL WORK ☐ PLUG AND ABANDON ☐

TEMPORARILY ABANDON ☐ CHANGE PLANS ☐

PULL OR ALTER CASING ☐ MULTIPLE COMPLETION ☐

OTHER: **CONSTRUCT DRILLING PIT** ☒

SUBSEQUENT REPORT OF:

REMEDIAL WORK ☐ ALTERING CASING ☐

COMMENCE DRILLING OPNS. ☐ PLUG AND ABANDONMENT ☐

CASING TEST AND CEMENT JOB ☐

OTHER: ☐

13. Describe proposed or completed operations. (Clearly state all pertinent details, and give pertinent dates, including estimated date of starting any proposed work). SEE RULE 1103. For Multiple Completions: Attach wellbore diagram of proposed completion or recompletion.

14. **Devon Energy will be constructing a lined drilling pit. The closure of said pit will be in accordance with the NMOCD regulations with the cutting of the liner applying to the BLM rules.**

I hereby certify that the information above is true and complete to the best of my knowledge and belief. I further certify that any pit or below-grade tank has been/will be constructed or closed according to NMOCD guidelines ☒, a general permit ☐ or an (attached) alternative OCD-approved plan ☐.

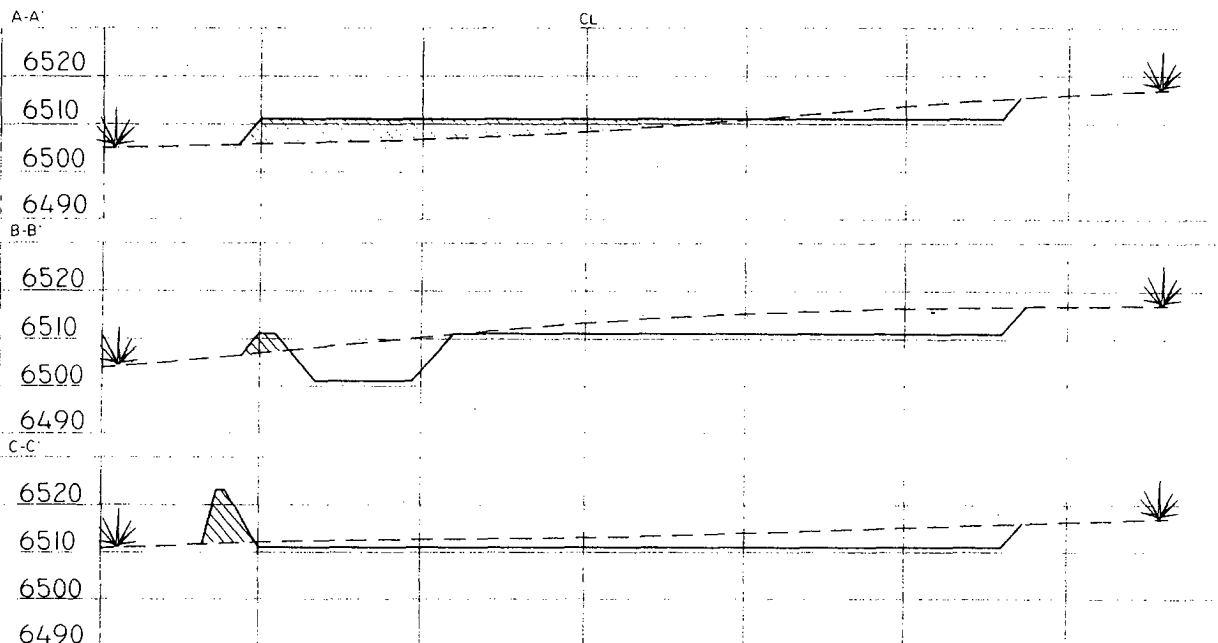
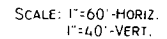
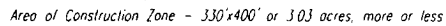
SIGNATURE M.S. Zimmerman TITLE Sr. Operations Technician DATE 12-8-05

Type or print name Melisa Zimmerman E-mail address: Melisa.zimmerman@dmn.com Telephone No. 405-552-7917

(This space for State use)

APPROVED BY [Signature] TITLE DEPUTY OIL & GAS INSPECTOR, DIST. 8 DATE MAR 13 2006  
Conditions of approval, if any:

Lat: 36.9236°  
Long: 107.5183°  
Lat: 36°55'25"  
Long: 107°31'06"



**NOTE:** Contractor should call One-Call for location of any marked or unmarked buried pipelines or cables on well pad and/or access road at least two (2) working days prior to construction.

Cuts and fills shown are approximate - final finished elevation is to be adjusted so earthwork will balance. Corner stakes are approximate and do not include additional areas needed for side slopes and drainages. Final Pad Dimensions are to be verified by Contractor

VANN SURVEYS  
P. O. Box 1306  
Farmington, NM

**NEBU 63M**  
**Unit O 1-T31N-R7W**  
**San Juan Co., NM**

**DRILLING PLAN**

**1. ESTIMATED TOPS OF IMPORTANT GEOLOGIC MARKERS & ANTICIPATED WATER, OIL, GAS OR MINERAL FORMATIONS:**

<b>Formation</b>	<b>TVD (FT)</b>	<b>TMD (FT)</b>	<b>Hydrocarbon/Water Bearing Zones</b>
San Jose	Surface	Surface	
Ojo Alamo	2390	2415	Aquifer
Kirtland	2510	2537	
Fruitland	2986	3020	Gas
Pictured Cliffs Tongue	3327	3364	Gas
Pictured Cliffs Main	3440	3477	Gas
Lewis	3582	3619	Gas
<b>Intermediate TD</b>	3682	3719	
Mesaverde	4246	4283	Gas
Chacra \ Otera	4654	4691	Gas
Cliff House	5427	5464	Gas
Menefee	5484	5521	Gas
Point Lookout	5743	5780	Gas
Mancos	6109	6146	Gas
<b>TD</b>	6209	6246	

\*All shows of fresh water and minerals will be adequately protected and reported.

**2. PRESSURE CONTROL EQUIPMENT:**

All well control equipment shall be in accordance with Onshore Order #2 for 2M systems.

The minimum specifications for pressure control equipment that will be provided are included on the attached schematic diagram, which shows the size, and pressure ratings.

2000# BOP With Pipe Rams and 2000# BOP With Blind Rams

Auxiliary equipment to be used:

- Upper kelly cock with handle available.

The manifold includes appropriate valves and adjustable chokes. The kill line will have one check valve. Ram type preventers will be pressure tested to full working pressure (utilizing a test plug) or 70% of the internal yield pressure (without a test plug) at:

- Initial installation
- Whenever any seal subject to test pressure is broken
- Following related repairs
- At 30 day intervals

Pipe and blind rams shall be activated each trip.

A BOPE pit level drill will be conducted weekly for each drilling crew.  
All tests and drills will be recorded in the drilling log.

The accumulator will have sufficient capacity to close all rams and retain 200 psi above pre-charge pressure without the use of closing unit pumps.

Master controls will be at the accumulator. Anticipated bottom hole pressure is 3400 psi.

### 3. **CASING & CEMENTING PROGRAM:**

A. The proposed casing program will be as follows:

TVD	TMD	Hole Size	Size	Grade	Weight	Thread	Condition
0-285'	0-285'	12-1/4"	9-5/8"	H-40	32#	STC	New
<del>0-3629'</del>	<del>0-3629'</del>	8-3/4"	7"	K-55	23#	LTC	New
0- TD	0- TD	6-1/4"	4-1/2"	J-55	11.6 #	LTC	New

The 9-5/8" surface pipe will be tested to 750 psi. All casing strings below the surface shoe shall be pressure tested to 0.22 psi/ft. of casing string length or 1500 psi, whichever is greater, but not to exceed 70% minimum internal yield.

**Surface:** The bottom three joints of the surface casing will have a minimum of one centralizer per joint and one centralizer every joint thereafter (Total 5 centralizers estimated)

**Intermediate:** The bottom three joints of the 7" casing will have a minimum of one centralizer per joint and one centralizer every fifth joint thereafter to above Ojo Alamo with turbolizers below and throughout the Ojo Alamo. (Total 12 centralizers, 3 turbolizers estimated).

**Production:** The bottom three joints will have a minimum of one centralizer per joint and one centralizer every fifth joint to 3400' (estimated 25 centralizers used). Centralizers will be open bow spring or basket bow spring type.

B. The proposed cementing program will be as follows:

**Surface String:** Cement will be circulated to surface.

**Lead:** 200 sks Class "B" with 100% Standard Cement, 2.00% CaCl<sub>2</sub>, .25 #/sk Flocele. Density: 15.6 lb/gal; Yield: 1.18 cuft/sk; Water: 5.24 gal/sk \*

**\* Minor variations possible due to existing conditions**

**Intermediate String:** Cement will be circulated to surface.

**Lead:** 500 sx 50/50 Poz, Yd-1.45, Water Gal/sx 6.8, Mixed @ 13ppg Foamed W/ N<sub>2</sub> Down To 9.0# Additives 2% Gel, 0.2% Versaset, 0.1% Diacel Lwl.

**Tail:** 75 sx 50/50 Poz, Yd-1.45, Water Gal/Sk 6.8, Additives 2% Gel, 0.2% Versaset, 0.1% Diacel Lwl.

**\* Minor variations possible due to existing conditions**

**If hole conditions dictate, an alternate, cement design will be used:**

**Lead:** 575 sx 50/50 Poz with 50% Class B Cement, 50% San Juan Poz, .4% Halad-344, .1% CFR-3, 3% Bentonite, 5#/sx Gilsonite, .25#/sx Flocele. Density: 13.0 lb/gal; Yield: 1.46 cuft/sx; Water: 6.42 gal/sx

**Tail:** 75 sx 50/50 Poz with 94#/sx Standard Cement, 0.3% Halad-344, .25 #/sx Flocele. Density: 15.6 lb/gal; Yield: 1.18 cuft/sx; Water: 5.23 gal/sx

**\* Minor variations possible due to existing conditions**

**Production String:**

4-1/2" Production casing cemented in an 6-1/4" hole

11.6# J-55 LT&C 8 Rnd

Float collar

Joint

Float Shoe

Cement with 500 sacks Class B 50/50 POZ, 3% gel, 5# gilsonite, 1/4"# Flocele, .1% CFR 3, .2% Halad 344, yield 1.47 ft<sup>3</sup>/sx.

Cement designed to circulate to surface.

Pending hole conditions, cement baskets may be installed above TD

**\* Minor variations possible due to existing conditions**

Actual volumes will be calculated and adjusted with caliper log prior to cementing.

If hole conditions dictate an alternate cement design will be used.

**Lead:** 500 Sx Of 50/50/Std/ Poz, Yd-1.45, Water Gal/Sk 6.8, Mixed @ 13ppg Foamed W/ N<sub>2</sub> Down To 9.0# Additives 2% Gel, 0.2% Versaset, 0.1% Diacel Lwl.

**Tail:** 75 Sx50/50/Std/ Poz, Yd-1.45, Water Gal/Sk 6.8, Additives 2% Gel, 0.2% Versaset, 0.1% Diacel Lwl.

**\* Minor variations possible due to existing conditions**

#### 4. DRILLING FLUIDS PROGRAM:

TVD Interval	TMD Interval	Type	Weight (ppg)	Viscosity	pH	Water Loss	Remarks
0-285'	0-285'	Spud-foam	8.4-9.0	29-70	8.0	NC	FW gel, LSND or stiff foam
285'-3,629'	285'-3,629'	Air				NC	
3,629' - TD	3,629' - TD	Air/N2 or Mud	8.5-9.0*	30-50	8.0-10.0	8-810cc @ TD	Low solids-non-dispersed. * min Wt. to control formation pressure

NC = no control

Sufficient quantities of mud material will be maintained on site or be readily accessible for the purpose of assuring well control. SPR will be recorded on daily drilling report after mudding up. Visual mud monitoring will be conducted during operations.

#### 5. EVALUATION PROGRAM:

**Logs:** Density  
Neutron  
Induction

In the event open hole logs are not run in the well, a cased hole evaluation log will Be run from

**Survey:** Deviation surveys will be taken every 500' of the 8 ¾" hole, or first succeeding bit change. The hole will be air drilled from intermediate TD – well TD. The equipment used in this type of operation will not allow for single shot suveys without considerable operational delays. A survey will be taken at TD. Similar wells in this area have not shown significant deviation in this section of the hole.

**Cores:** None anticipated.

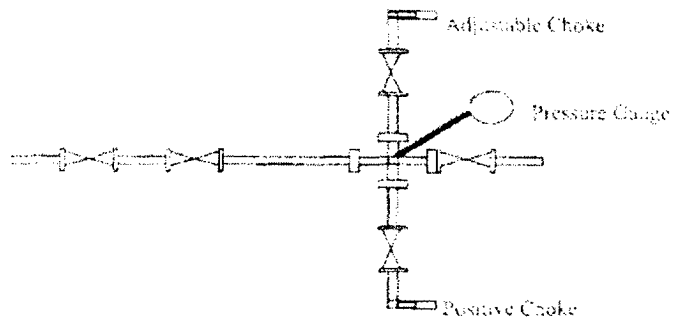
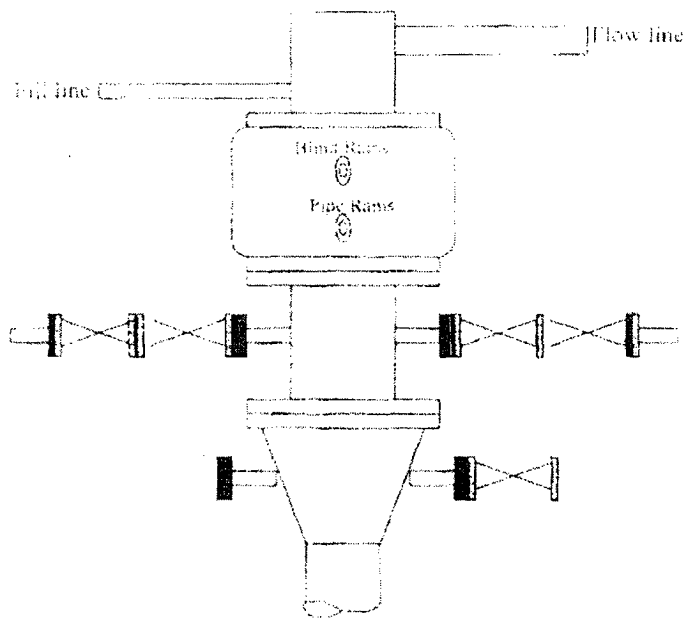
**DST's:** None anticipated.

#### 6. ABNORMAL CONDITIONS:

The Fruitland Coal will be encountered within the 8 ¾" hole. Estimated formation pressure is 300 psi. No other abnormal pressures and/or temperatures are expected. No hydrogen sulfide should be present.



## Well Control Equipment 2,000 psi Configuration



All well control equipment designed to meet or exceed the Onshore Oil and Gas Order No. 2, BLM 43 CFR 1100 requirements for 2M systems.

Company: Devon Energy  
 Lease/Well: NEBU 63M  
 Location: San Juan County  
 State/Country: NM

