

RECEIVED

SEP 11 2015

UNITED STATES
DEPARTMENT OF THE INTERIOR
BUREAU OF LAND MANAGEMENTFORM APPROVED
OMB No. 1004-0137
Expires: July 31, 2010

Farmington Field **SUNDRY NOTICES AND REPORTS ON WELLS**
Bureau of Land Management **Do not use this form for proposals to drill or to re-enter an abandoned well. Use Form 3160-3 (APD) for such proposals.**

SUBMIT IN TRIPLICATE - Other instructions on page 2.

1. Type of Well

☐ Oil Well☒ Gas Well☐ Other

2. Name of Operator

Burlington Resources Oil & Gas Company LP

3a. Address

PO Box 4289, Farmington, NM 87499

3b. Phone No. (include area code)

(505) 326-9700

4. Location of Well (Footage, Sec., T., R., M., or Survey Description)

UL J (NWSE), 1795' FSL & 1735' FEL, Sec. 22, T29N, R7W

UL P (SESE), 725' FSL & 725' FEL, Sec. 22, T29N, R7W

5. Lease Serial No.

SF-078424

6. If Indian, Allottee or Tribe Name

7. If Unit of CA/Agreement, Name and/or No.

San Juan 29-7 Unit

8. Well Name and No.

San Juan 29-7 Unit 65M

9. API Well No.

30-039-30516

10. Field and Pool or Exploratory Area

Blanco MV / Basin DK

11. Country or Parish, State

Rio Arriba, New Mexico

12. CHECK THE APPROPRIATE BOX(ES) TO INDICATE NATURE OF NOTICE, REPORT OR OTHER DATA

TYPE OF SUBMISSION

☒ Notice of Intent☐ Subsequent Report☐ Final Abandonment Notice

TYPE OF ACTION

☐ Acidize☐ Alter Casing☐ Casing Repair☐ Change Plans☐ Convert to Injection☐ Deepen☐ Fracture Treat☐ New Construction☐ Plug and Abandon☒ Plug Back☐ Production (Start/Resume)☐ Reclamation☐ Recomplete☐ Temporarily Abandon☐ Water Disposal☐ Water Shut-Off☐ Well Integrity☒ Other

Plugback DK

13. Describe Proposed or Completed Operation: Clearly state all pertinent details, including estimated starting date of any proposed work and approximate duration thereof. If the proposal is to deepen directionally or recompleat horizontally, give subsurface locations and measured and true vertical depths of all pertinent markers and zones. Attach the bond under which the work will be performed or provide the Bond No. on file with BLM/BIA. Required subsequent reports must be filed within 30 days following completion of the involved operations. If the operation results in a multiple completion or recompleat in a new interval, a Form 3160-4 must be filed once Testing has been completed. Final Abandonment Notices must be filed only after all requirements, including reclamation, have been completed and the operator has determined that the site is ready for final inspection.)

Burlington Resources requests permission to plug back the Dakota zone and produce this well as a standalone Mesaverde well. See the attached procedure, current and proposed wellbore diagram. A Closed loop system will be utilized to plug back the DK zone.

OIL CONS. DIV DIST. 3

SEP 17 2015

BLM'S APPROVAL OR ACCEPTANCE OF THIS ACTION DOES NOT RELIEVE THE LESSEE AND OPERATOR FROM OBTAINING ANY OTHER AUTHORIZATION REQUIRED FOR OPERATIONS ON FEDERAL AND INDIAN LANDS

SEE ATTACHED FOR CONDITIONS OF APPROVAL

14. I hereby certify that the foregoing is true and correct. Name (Printed/Typed)

Patsy Clugston

Staff Regulatory Technician

Title

Signature

Date

9/10/2015

THIS SPACE FOR FEDERAL OR STATE OFFICE USE

Approved by

Abdelgadir Elmadani

Title

PE

Date

09/14/15

Conditions of approval, if any, are attached. Approval of this notice does not warrant or certify that the applicant holds legal or equitable title to those rights in the subject lease which would entitle the applicant to conduct operations thereon.

Office

FFO

Title 18 U.S.C. Section 1001 and Title 43 U.S.C. Section 1212, make it a crime for any person knowingly and willfully to make to any department or agency of the United States any false, fictitious or fraudulent statements or representations as to any matter within its jurisdiction.

(Instruction on page 2)

NMOCD

aw 5 KC

ConocoPhillips
SAN JUAN 29-7 UNIT 65M
Expense - Plugback

Lat 36° 42' 32.267" N

Long 107° 33' 16.661" W

PROCEDURE

NOTE: This project requires the use of an A-Plus steel tank to handle waste fluids circulated from the well and cement wash up.

1. Hold pre-job safety meeting. Comply with all NMOCD, BLM, and COPC safety and environmental regulations. Test rig anchors prior to moving in rig.
2. MIRU workover rig. Check casing, tubing, and bradenhead pressures and record them in Wellview. **If there is pressure on the BH, contact Wells Engineer.**
3. Remove existing piping on casing valve. RU blow lines from casing valves and begin blowing down casing pressure. Kill well with 2% KCl water as necessary. Ensure well is dead or on vacuum.
4. ND wellhead and NU BOPE. Pressure and function test BOP to 250 psi low and 1,000 psi over SICP high to a maximum of 2,000 psi held and charted for 10 minutes as per COPC Well Control Manual. PU and remove tubing hanger and tag for fill, adding additional joints as needed. Record pressure test and fill depth in Wellview.
5. RU Tuboscope Unit to inspect tubing. TOOH with tubing (per pertinent data sheet). LD and replace any bad joints and record findings in Wellview. **Make note of corrosion, scale, or paraffin and save a sample to give to CIC/engineering for further analysis.**
6. PU 3-3/4" bit and watermelon mill and round trip as deep as possible above top Dakota perf at 8,116'.
7. RU wireline and PU 4-1/2" CIBP, set at 8,066'.
8. **Plug 1 (Dakota and Graneros Formation top and Dakota Perforations, 8,031'-8,066', 3 Sacks Class B Cement mixed at 15.6 ppg with a 1.18 cf/sk yield)**
Mix 3 sx Class B cement and spot a balanced plug using a dump bailer inside the casing to cover the Dakota formation top. POOH.
9. TIH with tubing using Tubing Drift Procedure (detail below).

Tubing Wt/Grade: 2-3/8", 4.7 ppf, L-80
Tubing Drift ID: 1.901"

Land Tubing At: 6,100'
KB: 15'

Tubing and BHA Description

1	2-3/8" Exp. Check
1	1.78" ID "F" Nipple
1	full jt 2-3/8" tubing
1	pup joint (2' or 4')
+/-194	jts 2-3/8" tubing
As Needed	pup joints for spacing
1	full jt 2-3/8" tubing

10. Ensure barriers are holding. ND BOPE, NU Wellhead. Pressure test tubing slowly with an air package as follows: pump 3 bbls pad, drop steel ball, pressure tubing up to 500 psi, and bypass air. Monitor pressure for 15 mins., then complete the operation by pumping off the expendable check. Note in Wellview the pressure in which the check pumped off. Purge air as necessary. Notify the MSO that the well is ready to be turned over to Production Operations. RDMO.

Tubing Drift Procedure

PROCEDURE

1. Set flow control in tubing. With air, on location, use expendable check. With no air on location, use wire line plug.
2. RU drift tool to a minimum 70' line. Drift tool will have an OD of at least the API drift specification of the drift diameter of the tubing to be drifted, and will be at least 15" long. The tool will not weigh more than 10# and will have an ID bore the length of the tool, so fluids may be pumped through the tool if it becomes stuck.
3. Drop the tool into the tubing string and retrieve it after every 2 joints of tubing ran in hole. If any resistance to the tool movement is noticed, going in or out, that joint will be replaced.

NOTE: All equipment must be kept clean and free of debris. The drift tool will be measured with calipers before each job, to ensure the OD is the correct size for the tubing being checked. The maximum allowable wear of the tool is 0.003".

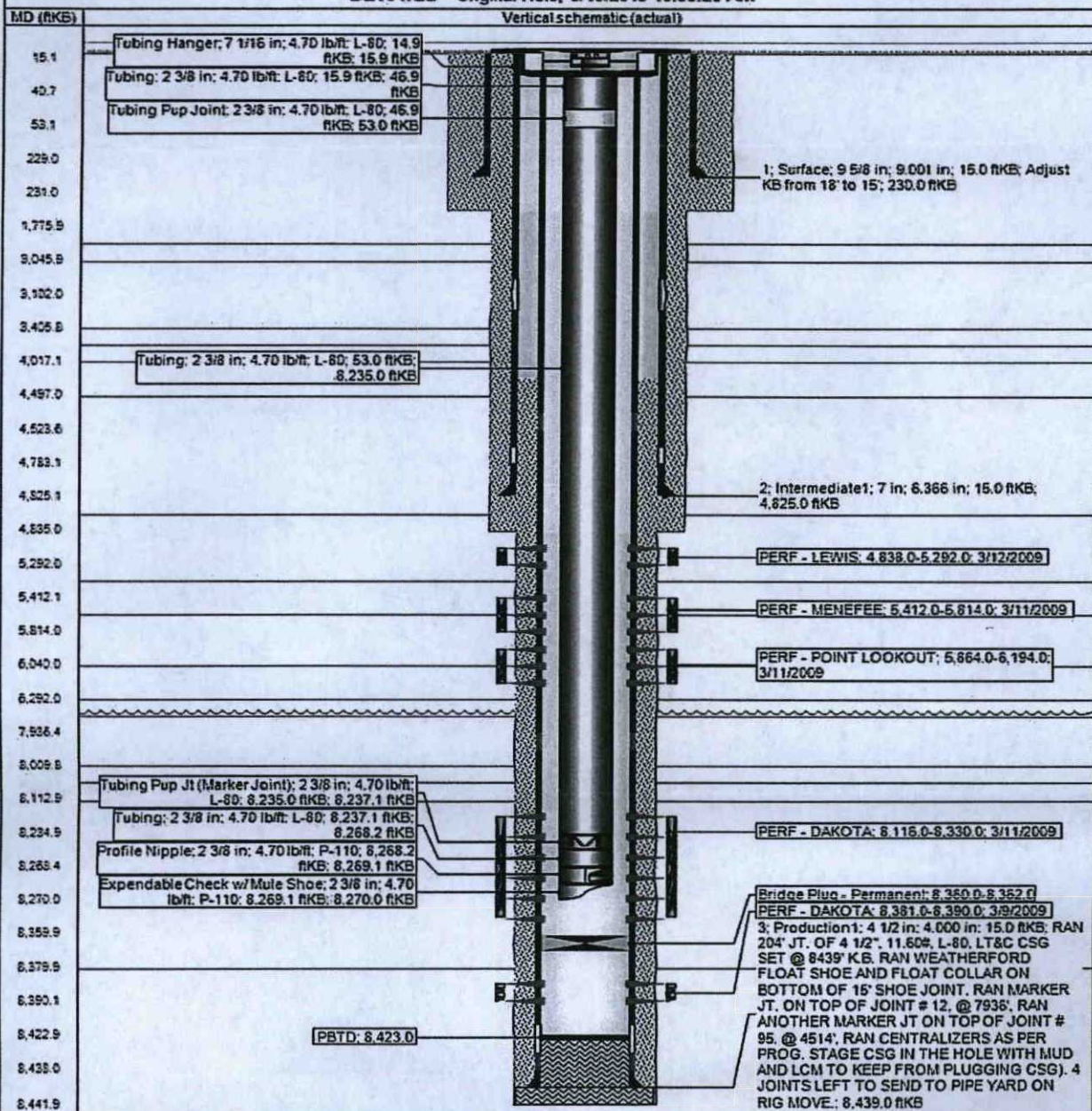


Basic- Schematic - Current

SAN JUAN 29-7 UNIT #65M

District SOUTH	Field Name MVDK.COM	API / UWI 3003930516	County RIO ARRIBA	State/Province NEW MEXICO
Original Spud Date 1/30/2009	Surface Legal Location 022-029N-007W-J	East/West Distance (ft) 1,735.00	East/West Reference FEL	North/South Distance (ft) 1,795.00
			North/South Reference FSL	

DEVIATED - Original Hole, 8/10/2015 10:59:20 AM



**Schematic - Proposed
SAN JUAN 29-7 UNIT #65M**

District SOUTH	Field Name MV/DK COM	API / UWI 3003930516	County RIO ARRIBA	State/Province NEW MEXICO
Original Spud Date 1/30/2009	Surf Loc 022-029N-007W-J	East/West Distance (ft) 1,735.00	East/West Reference FEL	N/S Dist (ft) 1,795.00
				North/South Reference FSL

DEVIATED - Original Hole, 1/1/2020

Vertical schematic (actual)		MD (ftKB)	Formation Tops
Tubing; 2 3/8 in; 4.70 lb/ft; L-80; 15.0 ftKB; 46.0 ftKB		45.9	
PUP Jnt; 2 3/8 in; 4.70 lb/ft; L-80; 46.0 ftKB; 50.0 ftKB		205.1	
1; Surface; 9 5/8 in; 9.001 in; 15.0 ftKB; 230.0 ftKB		231.0	
Tubing; 2 3/8 in; 4.70 lb/ft; L-80; 50.0 ftKB; 6,063.0 ftKB		1,266.1	NACIMIENTO OJO ALAMO KIRTLAND
		3,045.9	
		3,405.8	FRUITLAND PICTURED C...
		4,017.1	LEWS
2; Intermediate1; 7 in; 6.366 in; 15.0 ftKB; 4,825.0 ftKB		4,497.0	HUERFANIT ...
		4,834.0	CHACRA
		4,837.9	
PERF - LEWIS; 4,838.0-5,292.0; 3/12/2009		5,410.1	MESA VERDE
PERF - MENELEE; 5,412.0- 5,814.0; 3/11/2009		5,618.1	CLIFF HOUSE MENELEE
PERF - POINT LOOKOUT; 5,864.0-6,194.0; 3/11/2009		5,614.0	
PUP Jnt; 2 3/8 in; 4.70 lb/ft; L-80; 6,063.0 ftKB; 6,067.0 ftKB		6,040.0	POINT LOOK...
Tubing; 2 3/8 in; 4.70 lb/ft; L-80; 6,067.0 ftKB; 6,098.0 ftKB		6,066.9	
F Nipple; 2 3/8 in; 6,098.0 ftKB; 6,099.0 ftKB		6,099.1	
Expendable Check; 2 3/8 in; 6,099.0 ftKB; 6,100.0 ftKB		6,193.9	MANCOS GALLUP GREENHORN
		7,293.0	
		8,030.6	GRANEROS
Bridge Plug - Permanent; 8,066.0-8,069.0		8,065.9	
		8,112.9	DAKOTA
PERF - DAKOTA; 8,116.0- 8,330.0; 3/11/2009		8,330.1	
Bridge Plug - Permanent; 8,360.0-8,362.0		8,361.5	
PERF - DAKOTA; 8,381.0- 8,390.0; 3/9/2009		8,380.9	BURRO CAN...
PBTD; 8,423.0		8,422.9	
3; Production1; 4 1/2 in; 4,000 in; 15.0 ftKB; 8,439.0 ftKB		8,441.9	

BLM CONDITION OF APPROVAL

CASING REPAIR, WORKOVER AND RECOMPLETION OPERATIONS:

1. If casing repair operations are needed, obtain prior approval from this office before commencing repairs. If a CBL or other logs are run, provide this office with a copy.
2. After any casing repair operations, test cement squeeze to a minimum of 500# for 30 minutes with no more than 10 % pressure fall off in the 30 minute test period. Provide test chart with your subsequent report of operations
3. A properly functioning BOP and related equipment must be installed prior to commencing workover, casing repair, and/or recompletion operations.
4. Contact this office at (505) 564-7750 prior to conducting any cementing operations

SPECIAL STIPULATIONS:

1. Pits will be fenced during work-over operation.
2. All disturbance will be kept on existing pad.
3. All pits will be pulled and closed immediately upon completion of the recompletion and work-over activities.
4. Pits will be lined with an impervious material at least 12 mils thick.