

District I
1625 N. French Dr., Hobbs, NM 88240
District II
811 S. First St., Artesia, NM 88210
District III
1000 Rio Brazos Road, Aztec, NM 87410
District IV
1220 S. St. Francis Dr., Santa Fe, NM 87505

State of New Mexico
Energy Minerals and Natural Resources
Department
Oil Conservation Division
1220 South St. Francis Dr.
Santa Fe, NM 87505

Form C-144
Revised June 6, 2013

For temporary pits, below-grade tanks, and multi-well fluid management pits, submit to the appropriate NMOC District Office.
For permanent pits submit to the Santa Fe Environmental Bureau office and provide a copy to the appropriate NMOC District Office.

Pit, Below-Grade Tank, or

13158

Proposed Alternative Method Permit or Closure Plan Application

Type of action:

39-20458

- ☐ Below grade tank registration
☐ Permit of a pit or proposed alternative method
☒ Closure of a pit, below-grade tank, or proposed alternative method
☐ Modification to an existing permit/or registration
☐ Closure plan only submitted for an existing permitted or non-permitted pit, below-grade tank,

or proposed alternative method

OIL CONS. DIV DIST. 3

OCT 16 2015

Instructions: Please submit one application (Form C-144) per individual pit, below-grade tank or alternative request

Please be advised that approval of this request does not relieve the operator of liability should operations result in pollution of surface water, ground water or the environment. Nor does approval relieve the operator of its responsibility to comply with any other applicable governmental authority's rules, regulations or ordinances.

1.
Operator: ConocoPhillips Company OGRID #: 14538
Address: PO BOX 4289, Farmington, NM 87499
Facility or well name: San Juan 29-5 Unit 55
API Number: 30-039-20458 OCD Permit Number: _____
U/L or Qtr/Qtr M (SWSW) Section 18 Township 29N Range 05W County: Rio Arriba
Center of Proposed Design: Latitude 36.7213287°N Longitude -107.4041977°W NAD: ☒ 1927 ☐ 1983
Surface Owner: ☒ Federal ☐ State ☐ Private ☐ Tribal Trust or Indian Allotment

2.
☐ **Pit:** Subsection F, G or J of 19.15.17.11 NMAC
Temporary: ☐ Drilling ☐ Workover
☐ Permanent ☐ Emergency ☐ Cavitation ☐ P&A ☐ Multi-Well Fluid Management Low Chloride Drilling Fluid ☐ yes ☐ no
☐ Lined ☐ Unlined Liner type: Thickness _____ mil ☒ LLDPE ☐ HDPE ☐ PVC ☐ Other _____
☐ String-Reinforced
Liner Seams: ☐ Welded ☐ Factory ☐ Other _____ Volume: _____ bbl Dimensions: L _____ x W _____ x D _____

3.
☒ **Below-grade tank:** Subsection I of 19.15.17.11 NMAC
Volume: 40 bbl Type of fluid: Produced Water
Tank Construction material: Metal
☐ Secondary containment with leak detection ☒ Visible sidewalls, liner, 6-inch lift and automatic overflow shut-off
☐ Visible sidewalls and liner ☐ Visible sidewalls only ☐ Other _____
Liner type: Thickness 45 mil ☐ HDPE ☐ PVC ☒ Other LLDPE

4.
☐ **Alternative Method:**
Submittal of an exception request is required. Exceptions must be submitted to the Santa Fe Environmental Bureau office for consideration of approval.

5.
Fencing: Subsection D of 19.15.17.11 NMAC (Applies to permanent pits, temporary pits, and below-grade tanks)
☐ Chain link, six feet in height, two strands of barbed wire at top (Required if located within 1000 feet of a permanent residence, school, hospital, institution or church)
☐ Four foot height, four strands of barbed wire evenly spaced between one and four feet
☐ Alternate. Please specify _____

6. **Netting:** Subsection E of 19.15.17.11 NMAC (*Applies to permanent pits and permanent open top tanks*)

☐ Screen ☐ Netting ☐ Other _____

☐ Monthly inspections (If netting or screening is not physically feasible)

7. **Signs:** Subsection C of 19.15.17.11 NMAC

☐ 12"x 24", 2" lettering, providing Operator's name, site location, and emergency telephone numbers

☐ Signed in compliance with 19.15.16.8 NMAC

8. **Variances and Exceptions:**

Justifications and/or demonstrations of equivalency are required. Please refer to 19.15.17 NMAC for guidance.

Please check a box if one or more of the following is requested, if not leave blank:

☐ Variance(s): Requests must be submitted to the appropriate division district for consideration of approval.

☐ Exception(s): Requests must be submitted to the Santa Fe Environmental Bureau office for consideration of approval.

9. **Siting Criteria (regarding permitting):** 19.15.17.10 NMAC

Instructions: The applicant must demonstrate compliance for each siting criteria below in the application. Recommendations of acceptable source material are provided below. Siting criteria does not apply to drying pads or above-grade tanks.

General siting

Ground water is less than 25 feet below the bottom of a low chloride temporary pit or below-grade tank.

- ☐ NM Office of the State Engineer - iWATERS database search; ☐ USGS; ☐ Data obtained from nearby wells

☐ Yes ☐ No
☒ NA

Ground water is less than 50 feet below the bottom of a Temporary pit, permanent pit, or Multi-Well Fluid Management pit.

NM Office of the State Engineer - iWATERS database search; USGS; Data obtained from nearby wells

☐ Yes ☐ No
☒ NA

Within incorporated municipal boundaries or within a defined municipal fresh water well field covered under a municipal ordinance adopted pursuant to NMSA 1978, Section 3-27-3, as amended. **(Does not apply to below grade tanks)**

- Written confirmation or verification from the municipality; Written approval obtained from the municipality

☐ Yes ☐ No

Within the area overlying a subsurface mine. **(Does not apply to below grade tanks)**

- Written confirmation or verification or map from the NM EMNRD-Mining and Mineral Division

☐ Yes ☐ No

Within an unstable area. **(Does not apply to below grade tanks)**

- Engineering measures incorporated into the design; NM Bureau of Geology & Mineral Resources; USGS; NM Geological Society; Topographic map

☐ Yes ☐ No

Within a 100-year floodplain. **(Does not apply to below grade tanks)**

- FEMA map

☐ Yes ☐ No

Below Grade Tanks

Within 100 feet of a continuously flowing watercourse, significant watercourse, lake bed, sinkhole, wetland or playa lake (measured from the ordinary high-water mark).

- Topographic map; Visual inspection (certification) of the proposed site

☐ Yes ☒ No

Within 200 horizontal feet of a spring or a fresh water well used for public or livestock consumption.

- NM Office of the State Engineer - iWATERS database search; Visual inspection (certification) of the proposed site

☐ Yes ☒ No

Temporary Pit using Low Chloride Drilling Fluid (maximum chloride content 15,000 mg/liter)

Within 100 feet of a continuously flowing watercourse, or any other significant watercourse or within 200 feet of any lakebed, sinkhole, or playa lake (measured from the ordinary high-water mark). (Applies to low chloride temporary pits.)

- Topographic map; Visual inspection (certification) of the proposed site

☐ Yes ☐ No

Within 300 feet from a occupied permanent residence, school, hospital, institution, or church in existence at the time of initial application.

- Visual inspection (certification) of the proposed site; Aerial photo; Satellite image

☐ Yes ☐ No

Within 200 horizontal feet of a spring or a private, domestic fresh water well used by less than five households for domestic or stock watering purposes, or 300feet of any other fresh water well or spring, in existence at the time of the initial application.

NM Office of the State Engineer - iWATERS database search; Visual inspection (certification) of the proposed site

☐ Yes ☐ No

Within 100 feet of a wetland.

- US Fish and Wildlife Wetland Identification map; Topographic map; Visual inspection (certification) of the proposed site

☐ Yes ☐ No

Temporary Pit Non-low chloride drilling fluid

Within 300 feet of a continuously flowing watercourse, or any other significant watercourse, or within 200 feet of any lakebed, sinkhole, or playa lake (measured from the ordinary high-water mark).

- Topographic map; Visual inspection (certification) of the proposed site

☐ Yes ☐ No

Within 300 feet from a permanent residence, school, hospital, institution, or church in existence at the time of initial application.

- Visual inspection (certification) of the proposed site; Aerial photo; Satellite image

☐ Yes ☐ No

Within 500 horizontal feet of a spring or a private, domestic fresh water well used by less than five households for domestic or stock watering purposes, or 1000 feet of any other fresh water well or spring, in the existence at the time of the initial application;

- NM Office of the State Engineer - iWATERS database search; Visual inspection (certification) of the proposed site

☐ Yes ☐ No

Within 300 feet of a wetland.

- US Fish and Wildlife Wetland Identification map; Topographic map; Visual inspection (certification) of the proposed site

☐ Yes ☐ No

Permanent Pit or Multi-Well Fluid Management Pit

Within 300 feet of a continuously flowing watercourse, or 200 feet of any other significant watercourse, or lakebed, sinkhole, or playa lake (measured from the ordinary high-water mark).

- Topographic map; Visual inspection (certification) of the proposed site

☐ Yes ☐ No

Within 1000 feet from a permanent residence, school, hospital, institution, or church in existence at the time of initial application.

- Visual inspection (certification) of the proposed site; Aerial photo; Satellite image

☐ Yes ☐ No

Within 500 horizontal feet of a spring or a fresh water well used for domestic or stock watering purposes, in existence at the time of initial application.

- NM Office of the State Engineer - iWATERS database search; Visual inspection (certification) of the proposed site

☐ Yes ☐ No

Within 500 feet of a wetland.

- US Fish and Wildlife Wetland Identification map; Topographic map; Visual inspection (certification) of the proposed site

☐ Yes ☐ No

10.

Temporary Pits, Emergency Pits, and Below-grade Tanks Permit Application Attachment Checklist: Subsection B of 19.15.17.9 NMAC

Instructions: Each of the following items must be attached to the application. Please indicate, by a check mark in the box, that the documents are attached.

- ☐ Hydrogeologic Report (Below-grade Tanks) - based upon the requirements of Paragraph (4) of Subsection B of 19.15.17.9 NMAC
- ☐ Hydrogeologic Data (Temporary and Emergency Pits) - based upon the requirements of Paragraph (2) of Subsection B of 19.15.17.9 NMAC
- ☐ Siting Criteria Compliance Demonstrations - based upon the appropriate requirements of 19.15.17.10 NMAC
- ☐ Design Plan - based upon the appropriate requirements of 19.15.17.11 NMAC
- ☐ Operating and Maintenance Plan - based upon the appropriate requirements of 19.15.17.12 NMAC
- ☐ Closure Plan (Please complete Boxes 14 through 18, if applicable) - based upon the appropriate requirements of Subsection C of 19.15.17.9 NMAC and 19.15.17.13 NMAC

☐ Previously Approved Design (attach copy of design) API Number: _____ or Permit Number: _____

11.

Multi-Well Fluid Management Pit Checklist: Subsection B of 19.15.17.9 NMAC

Instructions: Each of the following items must be attached to the application. Please indicate, by a check mark in the box, that the documents are attached.

- ☐ Design Plan - based upon the appropriate requirements of 19.15.17.11 NMAC
- ☐ Operating and Maintenance Plan - based upon the appropriate requirements of 19.15.17.12 NMAC
- ☐ A List of wells with approved application for permit to drill associated with the pit.
- ☐ Closure Plan (Please complete Boxes 14 through 18, if applicable) - based upon the appropriate requirements of Subsection C of 19.15.17.9 NMAC and 19.15.17.13 NMAC

☐ Hydrogeologic Data - based upon the requirements of Paragraph (4) of Subsection B of 19.15.17.9 NMAC

☐ Siting Criteria Compliance Demonstrations - based upon the appropriate requirements of 19.15.17.10 NMAC

☐ Previously Approved Design (attach copy of design) API Number: _____ or Permit Number: _____

12. **Permanent Pits Permit Application Checklist:** Subsection B of 19.15.17.9 NMAC

Instructions: Each of the following items must be attached to the application. Please indicate, by a check mark in the box, that the documents are attached.

- ☐ Hydrogeologic Report - based upon the requirements of Paragraph (1) of Subsection B of 19.15.17.9 NMAC
- ☐ Siting Criteria Compliance Demonstrations - based upon the appropriate requirements of 19.15.17.10 NMAC
- ☐ Climatological Factors Assessment
- ☐ Certified Engineering Design Plans - based upon the appropriate requirements of 19.15.17.11 NMAC
- ☐ Dike Protection and Structural Integrity Design - based upon the appropriate requirements of 19.15.17.11 NMAC
- ☐ Leak Detection Design - based upon the appropriate requirements of 19.15.17.11 NMAC
- ☐ Liner Specifications and Compatibility Assessment - based upon the appropriate requirements of 19.15.17.11 NMAC
- ☐ Quality Control/Quality Assurance Construction and Installation Plan
- ☐ Operating and Maintenance Plan - based upon the appropriate requirements of 19.15.17.12 NMAC
- ☐ Freeboard and Overtopping Prevention Plan - based upon the appropriate requirements of 19.15.17.11 NMAC
- ☐ Nuisance or Hazardous Odors, including H₂S, Prevention Plan
- ☐ Emergency Response Plan
- ☐ Oil Field Waste Stream Characterization
- ☐ Monitoring and Inspection Plan
- ☐ Erosion Control Plan
- ☐ Closure Plan - based upon the appropriate requirements of Subsection C of 19.15.17.9 NMAC and 19.15.17.13 NMAC

13. **Proposed Closure:** 19.15.17.13 NMAC

Instructions: Please complete the applicable boxes, Boxes 14 through 18, in regards to the proposed closure plan.

- Type: ☐ Drilling ☐ Workover ☐ Emergency ☐ Cavitation ☐ P&A ☐ Permanent Pit ☐ Below-grade Tank ☐ Multi-well Fluid Management Pit
☐ Alternative
- Proposed Closure Method: ☒ Waste Excavation and Removal
☐ Waste Removal (Closed-loop systems only)
☐ On-site Closure Method (Only for temporary pits and closed-loop systems)
☐ In-place Burial ☐ On-site Trench Burial
☐ Alternative Closure Method

14. **Waste Excavation and Removal Closure Plan Checklist:** (19.15.17.13 NMAC) **Instructions:** Each of the following items must be attached to the closure plan. Please indicate, by a check mark in the box, that the documents are attached.

- ☒ Protocols and Procedures - based upon the appropriate requirements of 19.15.17.13 NMAC
- ☒ Confirmation Sampling Plan (if applicable) - based upon the appropriate requirements of Subsection C of 19.15.17.13 NMAC
- ☒ Disposal Facility Name and Permit Number (for liquids, drilling fluids and drill cuttings)
- ☒ Soil Backfill and Cover Design Specifications - based upon the appropriate requirements of Subsection H of 19.15.17.13 NMAC
- ☒ Re-vegetation Plan - based upon the appropriate requirements of Subsection H of 19.15.17.13 NMAC
- ☒ Site Reclamation Plan - based upon the appropriate requirements of Subsection H of 19.15.17.13 NMAC

15. **Siting Criteria (regarding on-site closure methods only):** 19.15.17.10 NMAC

Instructions: Each siting criteria requires a demonstration of compliance in the closure plan. Recommendations of acceptable source material are provided below. Requests regarding changes to certain siting criteria require justifications and/or demonstrations of equivalency. Please refer to 19.15.17.10 NMAC for guidance.

Ground water is less than 25 feet below the bottom of the buried waste. - NM Office of the State Engineer - iWATERS database search; USGS; Data obtained from nearby wells	<input type="checkbox"/> Yes <input type="checkbox"/> No <input type="checkbox"/> NA
Ground water is between 25-50 feet below the bottom of the buried waste - NM Office of the State Engineer - iWATERS database search; USGS; Data obtained from nearby wells	<input type="checkbox"/> Yes <input type="checkbox"/> No <input type="checkbox"/> NA
Ground water is more than 100 feet below the bottom of the buried waste. - NM Office of the State Engineer - iWATERS database search; USGS; Data obtained from nearby wells	<input type="checkbox"/> Yes <input type="checkbox"/> No <input type="checkbox"/> NA
Within 100 feet of a continuously flowing watercourse, or 200 feet of any other significant watercourse, lakebed, sinkhole, or playa lake (measured from the ordinary high-water mark). - Topographic map; Visual inspection (certification) of the proposed site	<input type="checkbox"/> Yes <input type="checkbox"/> No
Within 300 feet from a permanent residence, school, hospital, institution, or church in existence at the time of initial application. - Visual inspection (certification) of the proposed site; Aerial photo; Satellite image	<input type="checkbox"/> Yes <input type="checkbox"/> No
Within 300 horizontal feet of a private, domestic fresh water well or spring used for domestic or stock watering purposes, in existence at the time of initial application. - NM Office of the State Engineer - iWATERS database; Visual inspection (certification) of the proposed site	<input type="checkbox"/> Yes <input type="checkbox"/> No
Written confirmation or verification from the municipality; Written approval obtained from the municipality	<input type="checkbox"/> Yes <input type="checkbox"/> No
Within 300 feet of a wetland. US Fish and Wildlife Wetland Identification map; Topographic map; Visual inspection (certification) of the proposed site	<input type="checkbox"/> Yes <input type="checkbox"/> No
Within incorporated municipal boundaries or within a defined municipal fresh water well field covered under a municipal ordinance	

adopted pursuant to NMSA 1978, Section 3-27-3, as amended.

- Written confirmation or verification from the municipality; Written approval obtained from the municipality

☐ Yes ☐ No

Within the area overlying a subsurface mine.

- Written confirmation or verification or map from the NM EMNRD-Mining and Mineral Division

☐ Yes ☐ No

Within an unstable area.

- Engineering measures incorporated into the design; NM Bureau of Geology & Mineral Resources; USGS; NM Geological Society; Topographic map

☐ Yes ☐ No

Within a 100-year floodplain.

- FEMA map

☐ Yes ☐ No

16. **On-Site Closure Plan Checklist:** (19.15.17.13 NMAC) *Instructions: Each of the following items must be attached to the closure plan. Please indicate, by a check mark in the box, that the documents are attached.*

- ☐ Siting Criteria Compliance Demonstrations - based upon the appropriate requirements of 19.15.17.10 NMAC
- ☐ Proof of Surface Owner Notice - based upon the appropriate requirements of Subsection E of 19.15.17.13 NMAC
- ☐ Construction/Design Plan of Burial Trench (if applicable) based upon the appropriate requirements of Subsection K of 19.15.17.11 NMAC
- ☐ Construction/Design Plan of Temporary Pit (for in-place burial of a drying pad) - based upon the appropriate requirements of 19.15.17.11 NMAC
- ☐ Protocols and Procedures - based upon the appropriate requirements of 19.15.17.13 NMAC
- ☐ Confirmation Sampling Plan (if applicable) - based upon the appropriate requirements of 19.15.17.13 NMAC
- ☐ Waste Material Sampling Plan - based upon the appropriate requirements of 19.15.17.13 NMAC
- ☐ Disposal Facility Name and Permit Number (for liquids, drilling fluids and drill cuttings or in case on-site closure standards cannot be achieved)
- ☐ Soil Cover Design - based upon the appropriate requirements of Subsection H of 19.15.17.13 NMAC
- ☐ Re-vegetation Plan - based upon the appropriate requirements of Subsection H of 19.15.17.13 NMAC
- ☐ Site Reclamation Plan - based upon the appropriate requirements of Subsection H of 19.15.17.13 NMAC

17. **Operator Application Certification:**

I hereby certify that the information submitted with this application is true, accurate and complete to the best of my knowledge and belief.

Name (Print): _____ Title: _____

Signature: _____ Date: _____

e-mail address: _____ Telephone: _____

18. **OCD Approval:** ☐ Permit Application (including closure plan) ☒ Closure Plan (only) ☐ OCD Conditions (see attachment)

OCD Representative Signature: [Signature] Approval Date: 11/17/15

Title: Environmental Spec OCD Permit Number: _____

19. **Closure Report (required within 60 days of closure completion):** 19.15.17.13 NMAC

Instructions: Operators are required to obtain an approved closure plan prior to implementing any closure activities and submitting the closure report. The closure report is required to be submitted to the division within 60 days of the completion of the closure activities. Please do not complete this section of the form until an approved closure plan has been obtained and the closure activities have been completed.

☒ Closure Completion Date: 6/22/15

20. **Closure Method:**

- ☒ Waste Excavation and Removal ☐ On-Site Closure Method ☐ Alternative Closure Method ☐ Waste Removal (Closed-loop systems only)
- ☐ If different from approved plan, please explain.

21. **Closure Report Attachment Checklist:** *Instructions: Each of the following items must be attached to the closure report. Please indicate, by a check mark in the box, that the documents are attached.*

- ☒ Proof of Closure Notice (surface owner and division)
- ☐ Proof of Deed Notice (required for on-site closure for private land only)
- ☐ Plot Plan (for on-site closures and temporary pits)
- ☒ Confirmation Sampling Analytical Results (if applicable)
- ☐ Waste Material Sampling Analytical Results (required for on-site closure)
- ☐ Disposal Facility Name and Permit Number
- ☒ Soil Backfilling and Cover Installation
- ☒ Re-vegetation Application Rates and Seeding Technique
- ☒ Site Reclamation (Photo Documentation)

On-site Closure Location: Latitude _____°N _____ Longitude _____°W _____ NAD: ☐ 1927 ☐ 1983

Operator Closure Certification:

I hereby certify that the information and attachments submitted with this closure report is true, accurate and complete to the best of my knowledge and belief. I also certify that the closure complies with all applicable closure requirements and conditions specified in the approved closure plan.

Name (Print): Crystal Walker Title: Regulatory Coordinator

Signature:  Date: 10/14/15

e-mail address: crystal.walker@cop.com Telephone: (505) 326-9837

ConocoPhillips Company
BGT Size Clarification

ConocoPhillips requests to clarify the approved C-144 BGT permit for the San Juan 29-5 Unit 55 indicated the BGT is 120bbls. Upon closure it was discovered the actual size of the BGT is 40bbls.

**ConocoPhillips Company
San Juan Basin
Below Grade Tank Closure Report
(Without Reclamation)**

Lease Name: San Juan 29-5 Unit 55

API No.: 30-039-20458

In accordance with Rule 19.15.17.13 NMAC the following information describes the closure of the below-grade tank referenced above. All proper documentation regarding closure activities is being included with the C-144.

General Plan:

1. COPC shall close a below-grade tank within 60 days of cessation of operations per Subsection G.4 of 19.15.17.13 NMAC. This will include a) below-grade tanks that do not meet the requirements of Paragraphs (1) through (4) of Subsection I of 19.15.17.11 NMAC or is not included in Paragraph (5) of Subsection I of 19.15.17.11 NMAC within five years, if not retrofitted to comply with Paragraphs (1) through (4) of Subsection I of 19.15.17.11 NMAC; b) an earlier date that the division requires because of imminent danger to fresh water, public health or the environment. For any closure, COPC will file the C144 Closure Report as required.

The below-grade tank referenced above was permitted and closed within 60 days of cessation of the below-grade tanks operation.

2. COPC shall remove liquids and sludge from a below-grade tank prior to implementing a closure method and shall dispose of the liquids and sludge in a division-approved facility. The facilities to be used will be Basin Disposal (Permit #NM-01-005), JFJ Landfarm % Industrial Ecosystem Inc. (Permit # NM-01-0010B) and Envirotech Land Farm (Permit #NM-01-011). The liner after being cleaned well (Subsection D, Paragraph 1, Subparagraph (m) of 19.15.9.712 NMAC) will be disposed of at the San Juan County Regional Landfill located on CR 3100.

All recovered liquids were disposed of at Basin Disposal (Permit #NM-01-005) and any sludge or soil required to be removed to facilitate closure was hauled to Envirotech Land Farm (Permit #NM-01-011) and JFJ Landfarm % IEI (Permit #NM-01-0010B). The liner was cleaned per Subsection D, Paragraph 1, Subparagraph (m) of 19.15.9.712 NMAC was disposed of at the San Juan County Regional Landfill located on CR 3100.

3. COPC will receive prior approval to remove the below-grade tank and dispose of it in a division-approved facility or recycle, reuse, or reclaim it in a manner that the appropriate division district office approves.

The below-grade tank was disposed of in a division-approved manner.

4. If there is any on-site equipment associated with a below-grade tank, then COPC shall remove the equipment, unless the equipment is required for some other purpose.

All on-site equipment associated with the below-grade tank was removed.

5. COPC will test the soils beneath the below-grade tank to determine whether a release has occurred. COPC shall collect, at a minimum, a five point, composite sample; collect individual grab samples from any area that is wet, discolored or showing other evidence of a release; and analyzed for the constituents listed in Table I of 19.15.17.13 NMAC. COPC shall notify the division of its results on form C-141.

10/14/2015

A five point composite sample was taken of the below-grade tank using sampling tools and all samples tested per Subsection B of 19.15.17.1 3(B)(1)(b). (Sample results attached). Form C-141 is attached.

Components	Tests Method	Limit (mg/kg)
Benzene	EPA SW-846 8021B or 8260B	0.2
BTEX	EPA SW-846 8021B or 8260B	50
TPH	EPA SW-846 418.1	100
Chlorides	EPA 300.0	250

6. If COPC or the division determines that a release has occurred, then COPC shall comply with 19.15.3.116 NMAC and 19.15.1.19 NMAC, as appropriate.

A release was not determined for the above referenced well.

7. If the sampling program demonstrates that a release has not occurred or that any release does not exceed the concentrations specified in Table I of 19.15.17.13 NMAC, then COPC shall backfill the excavation with compacted, non-waste containing, earthen material; construct a division-prescribed soil cover; recontour and re-vegetate the site.

The below-grade tank area passed all requirements of Paragraph (4) of Subsection E of 19.15.17.13 NMAC and was backfilled with compacted, non-waste containing, earthen material.

8. Notice of Closure will be given prior to closure to the Aztec Division office between 72 hours and one week via email or verbally. The notification of closure will include the following:
- Operator's name
 - Location by Unit Letter, Section, Township, and Range. Well name and API number.

Closure notification attached.

9. The surface owner shall be notified of COPC's closing of the below-grade tank 72 hours, but not more than one week, prior to closure as per the approved closure plan via certified mail, return receipt requested.

The closure process notification to the landowner was sent via email. (See Attached) (Well located on Federal Land, certified mail is not required for Federal Land per BLM/OCD MOU.)

10. Re-contouring of location will match fit, shape, line, form and texture of the surrounding. Re-shaping will include drainage control, prevent ponding, and prevent erosion. Natural drainages will be unimpeded and water bars and/or silt traps will be place in areas where needed to prevent erosion on a large scale. Final re-contour shall have a uniform appearance with smooth surface, fitting the natural landscape.

The below-grade tank was removed due to integrity issues and replaced. No reclamation work will be done on this location.

11. COPC shall seed the disturbed areas the first favorable growing season following closure of a below-grade tank. Seeding will be accomplished via drilling on the contour whenever practical or by other division-approved methods. BLM stipulated seed mixes will used on federally regulated lands and division-approved seed mixtures (administratively approved if required) will be utilized on all State or private lands. A uniform vegetative cover has been established that reflects a life-form ratio of plus or minus fifty percent (50%) of pre-disturbance levels and a total percent plant cover of at least seventy percent (70%) of pre-disturbance levels, excluding noxious weeds. If alternate seed mix is required by the state, private owner or tribe, it will be implemented with administrative approval if needed. COPC will repeat seeding or planting will be continued until successful vegetative growth occurs.

The below-grade tank was removed. No reclamation work will be done on this location.

12. A minimum of four feet of cover shall be achieved and the cover shall include one foot of suitable material, with chloride concentrations less than 600 mg/kg as analyzed by EPA Method 300.0, to establish vegetation at the site, or the background thickness of topsoil, whichever is greater.

The below-grade tank was removed. No reclamation work will be done on this location.

13. All closure activities will include proper documentation and be available for review upon request and will be submitted to OCD within 60 days of closure of the below-grade tank. Closure report will be filed on C-144 and incorporate the following:

- Soil Backfilling and Cover Installation **(See Report)**
- Re-vegetation application rates and seeding techniques **(See Report)**
- Photo documentation of the site reclamation **(Included as an attachment)**
- Confirmation Sampling Results **(Included as an attachment)**
- Proof of closure notice **(Included as an attachment)**

Walker, Crystal

From: White, Arleen R
Sent: Friday, July 17, 2015 8:00 AM
To: Cory Smith; Brandon Powell; 'Mark Kelly'; SJBU E-Team
Cc: GRP:SJBU Regulatory; Trujillo, Fasho D; Baird, Stephen J
Subject: SAN JUAN 29-5 UNIT 55 - 72 HOUR NOTICE

Subject: BGT Clousure 72 Hr Notification

Anticipated Start Date: Wednesday, July 22, 2015 @ approximately 10:00 am

The subject well has a below-grade tank that will begin the closure process between 72 hours and one week from this notification. Please contact me at any time if you have any questions or concerns.

Well Name: San Juan 29-5 Unit 55

API#: 30-039-20458

Location: UL M, Sec. 18, T29N, R05W

Footages: 1100' FSL & 860' FWL

Operator: BR **Surface Owner:** BLM



Arleen White
Staff Regulatory Technician
San Juan Business Unit
Ph: (505)326-9517
Cell: (505) 215-3985
arleen.r.white@conocophillips.com

District I
1625 N. French Dr., Hobbs, NM 88240
District II
1301 W. Grand Avenue, Artesia, NM 88210
District III
1000 Rio Brazos Road, Aztec, NM 87410
District IV
1220 S. St. Francis Dr., Santa Fe, NM 87505

State of New Mexico
Energy Minerals and Natural Resources

Oil Conservation Division
1220 South St. Francis Dr.
Santa Fe, NM 87505

Form C-141
Revised August 8, 2011

Submit 1 Copy to appropriate District Office to
accordance with 19.15.29 NMAC.

Release Notification and Corrective Action

OPERATOR

☐ Initial Report ☒ Final Report

Name of Company ConocoPhillips Company	Contact Crystal Walker
Address 3401 East 30th St, Farmington, NM	Telephone No. (505) 326-9837
Facility Name: San Juan 29-5 Unit 55	Facility Type: Gas Well

Surface Owner BLM	Mineral Owner	API No. 30-039-20458
--------------------------	---------------	-----------------------------

LOCATION OF RELEASE

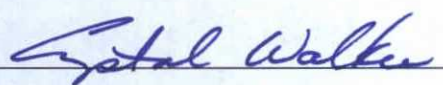
Unit Letter M	Section 18	Township 29N	Range 5W	Feet from the 1100	North/South Line South	Feet from the 860	East/West Line West	County Rio Arriba
-------------------------	----------------------	------------------------	--------------------	------------------------------	----------------------------------	-----------------------------	-------------------------------	-----------------------------

Latitude **36.7213287** Longitude **-107.4041977**

NATURE OF RELEASE

Type of Release	Volume of Release	Volume Recovered
Source of Release	Date and Hour of Occurrence	Date and Hour of Discovery
Was Immediate Notice Given? <input type="checkbox"/> Yes <input type="checkbox"/> No <input checked="" type="checkbox"/> Not Required	If YES, To Whom?	
By Whom?	Date and Hour	
Was a Watercourse Reached? <input type="checkbox"/> Yes <input checked="" type="checkbox"/> No	If YES, Volume Impacting the Watercourse.	
If a Watercourse was Impacted, Describe Fully.* N/A		
Describe Cause of Problem and Remedial Action Taken.* No release was encountered during the BGT Closure.		
Describe Area Affected and Cleanup Action Taken.* N/A		

I hereby certify that the information given above is true and complete to the best of my knowledge and understand that pursuant to NMOCD rules and regulations all operators are required to report and/or file certain release notifications and perform corrective actions for releases which may endanger public health or the environment. The acceptance of a C-141 report by the NMOCD marked as "Final Report" does not relieve the operator of liability should their operations have failed to adequately investigate and remediate contamination that pose a threat to ground water, surface water, human health or the environment. In addition, NMOCD acceptance of a C-141 report does not relieve the operator of responsibility for compliance with any other federal, state, or local laws and/or regulations.

Signature: 	OIL CONSERVATION DIVISION	
Printed Name: Crystal Walker	Approved by Environmental Specialist:	
Title: Regulatory Coordinator	Approval Date:	Expiration Date:
E-mail Address: crystal.walker@cop.com	Conditions of Approval:	Attached <input type="checkbox"/>
Date: 10/14/15 Phone: (505) 326-9837		

* Attach Additional Sheets If Necessary

Rule Engineering, LLC

Solutions to Regulations for Industry

September 22, 2015

Ms. Lisa Hunter
ConocoPhillips
San Juan Business Unit
5525 Highway 64
Farmington, New Mexico 87401

**Re: San Juan 29-5 Unit 55
Below Grade Tank Closure Sampling Report**

Dear Ms. Hunter:

This report summarizes the below grade tank (BGT) closure sampling activities conducted by Rule Engineering, LLC (Rule) at the ConocoPhillips San Juan 29-5 Unit 55, located in Unit Letter M, Section 18, Township 29N, Range 5W in Rio Arriba County, New Mexico. Activities included collection and analysis of a 5-point composite soil confirmation sample from beneath the BGT on July 22, 2015. A topographic map of the location is included as Figure 1 and an aerial site map is included as Figure 2.

BGT Summary

Site Name – San Juan 29-5 Unit 55

Location – Unit Letter M, Section 18, Township 29N, Range 5W

API Number – 30-039-20458

Wellhead Latitude/Longitude – N36.72144 and W107.40489

BGT Latitude/Longitude – N36.72131 and W107.40456

Land Jurisdiction – Bureau of Land Management

Size of BGT – 40 barrels

Date of BGT Closure Soil Sampling – June 22, 2015

BGT Closure Standards

As outlined in 19.15.17.13 New Mexico Administrative Code (NMAC), BGT closure standards for the San Juan 29-5 Unit 55 are as follows: 0.2 mg/kg benzene, 50 mg/kg total benzene, toluene, ethylbenzene, and total xylenes (BTEX), and 100 mg/kg total petroleum hydrocarbons (TPH).

Field Activities

On July 22, 2015, following removal of the BGT tank and gravel, Rule personnel conducted a visual inspection for surface/subsurface indications of a release. No evidence of a release was observed. Rule personnel then collected five soil samples (S-1 through S-5) from 0.5 feet beneath the BGT liner. Figure 2 provides the location of the soil samples collected from below the BGT. The field work summary sheet is attached.

Soil Sampling

The five soil samples (S-1 through S-5) collected from below the BGT liner were combined to create soil confirmation sample SC-1. A portion of SC-1 was field screened for volatile organic compounds (VOCs) and chlorides, and field analyzed for total petroleum hydrocarbons (TPH) per U.S. Environmental Protection Agency (USEPA) Method 418.1.

The portion of SC-1 collected for laboratory analysis was placed into laboratory supplied glassware, labeled, and maintained on ice until delivery to Hall Environmental Analysis Laboratory in Albuquerque, New Mexico. The sample was analyzed for BTEX per USEPA Method 8021B, TPH per USEPA Method 418.1, and chlorides per USEPA Method 300.0.

Field sampling results for soil confirmation sample SC-1 reported VOCs at 4.2 ppm and TPH concentrations at 21.8 mg/kg. Field chloride concentrations were reported at 80 mg/kg. Laboratory analytical results for sample SC-1 reported benzene and total BTEX concentrations as less than 0.050 mg/kg and 0.249 mg/kg, respectively. Laboratory analytical results for SC-1 reported concentrations of less than 20.0 mg/kg TPH and less than 1.5 mg/kg chloride. Field and laboratory results for SC-1 are summarized in Table 1, and the analytical laboratory report is attached.

Conclusions

On July 22, 2015, BGT closure sampling activities were conducted at the ConocoPhillips San Juan 29-5 Unit 55. Field and laboratory results for sample SC-1 were reported below the BGT closure standards for benzene, total BTEX, TPH, and chlorides as outlined in 19.15.17.13.NMAC. Based on field sampling and laboratory analytical results, no release occurred from the BGT and no further work is recommended.

Rule Engineering appreciates the opportunity to provide services to ConocoPhillips. If you have any questions, please contact me at (505) 325-1055.

Sincerely,
Rule Engineering, LLC

Heather M. Woods

Heather M. Woods, P.G.

Ms. Lisa Hunter
San Juan 29-5 Unit 55
September 22, 2015
Page 3 of 3

Attachments:

Table 1. Soil Sampling Results-VOCs, Benzene, Total BTEX, and TPH

Figure 1. Topographic Map

Figure 2. Aerial Site Map

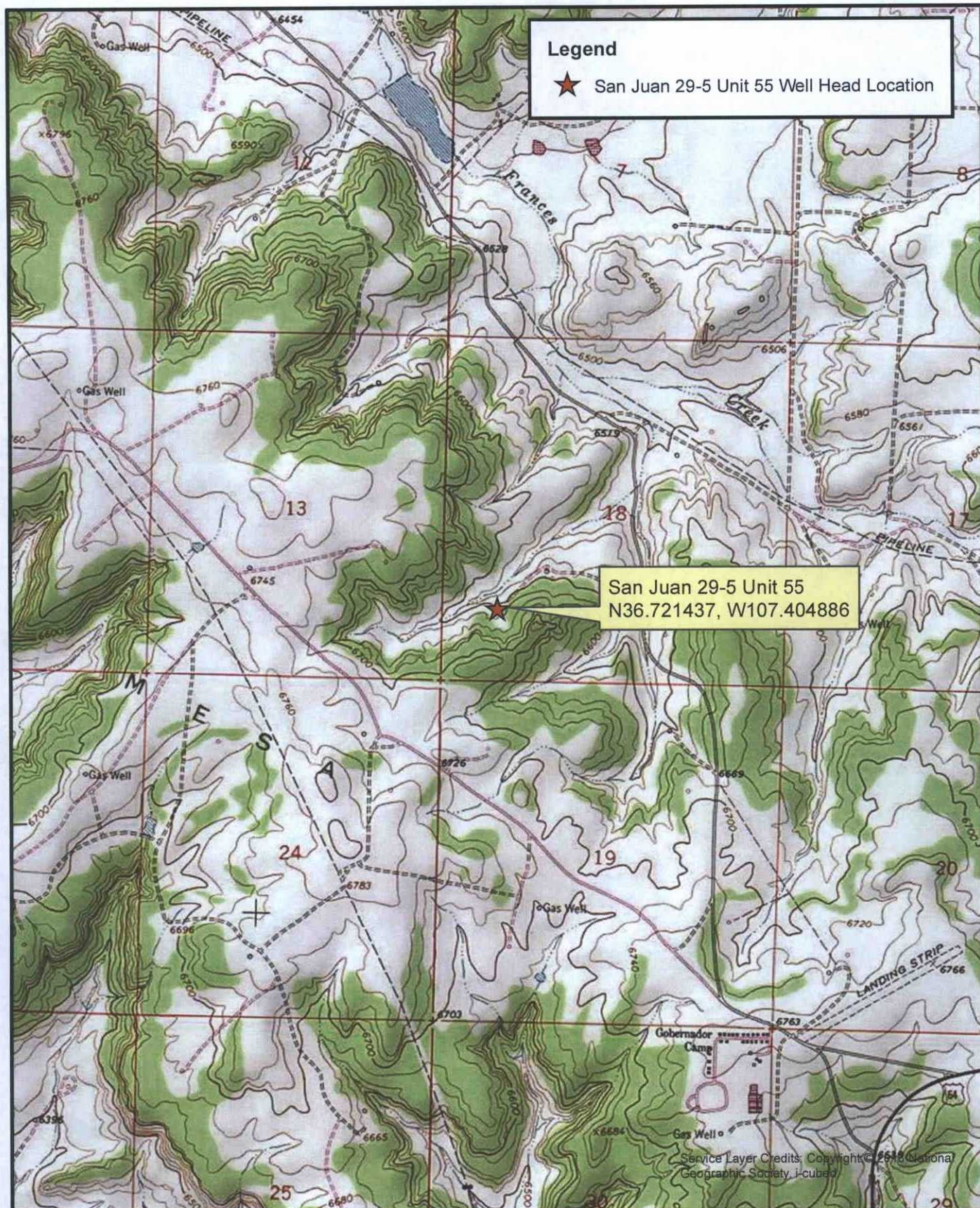
Field Work Summary Sheet

Analytical Laboratory Report

Table 1. BGT Soil Sampling Results
San Juan 29-5 Unit 55
Rio Arriba County, New Mexico
ConocoPhillips

Sample ID	Date	Sample Type	Sample Depth (ft below BGT liner)	Field Sampling Results			Laboratory Analytical Results			
				VOCs (PID) (ppm)	TPH (mg/kg)	Chloride (mg/kg)	Benzene (mg/kg)	Total BTEX (mg/kg)	TPH (mg/kg)	Chloride (mg/kg)
BGT Closure Standards*				----	100	250	0.2	50	100	250
SC-1	Jul 22, 15	composite	0.5	4.2	21.8	80	<0.050	<0.249	<20.0	<1.5

Notes: PID - photo-ionization detector
 ppm - parts per million
 mg/kg - milligrams/kilograms
 VOCs - volatile organic compounds
 TPH-total petroleum hydrocarbons per USEPA Method 418.1
 BTEX - benzene, toluene, ethylbenzene, and total xylenes
 *19.15.17.13 NMAC



Rule Engineering, LLC
Solutions to Regulations for Industry

0 1,000 2,000 3,000 4,000 Feet

Location
M-18-29N-5W
N36.721437, W107.404886
Rio Arriba County, New Mexico

Topographic Map
ConocoPhillips
San Juan 29-5 Unit 55
API: 30-039-20458

Date: 7/31/2015 File: 150731 SJ 29-5 #55 Topographic Map

Figure: 1



Rule Engineering, LLC
Solutions to Regulations for industry

0 20 40 60 80 Feet



Location
M-18-29N-5W
N36.721437, W107.404886
Rio Arriba County, New Mexico

Aerial Site Map
ConocoPhillips
San Juan 29-5 Unit 55
API: 30-039-20458

Date: 9/21/2015 File: 150731 SJ 29-5 #55 Aerial Map

Figure: 2

Rule Engineering Field Work Summary Sheet

Company: ConocoPhillips
Location: San Juan 29-5 Unit 55
API: 30-039-20458
Legals: M-18-29N-5W
County: Rio Arriba
Land Jurisdiction: BLM

Date: 22-Jul-15

Staff: Sean Norris
Debbie Watson

Wellhead GPS: 36.72131, -107.40456

BGT GPS: 36.72144, -107.40489

Siting Information based on BGT Location:

Groundwater: 70 ft-Cathodic for location

Surface Water: Unnamed wash located approximately 365 ft NW of BGT

Wellhead Protection: No wells identified within 1,000 foot radius

Site Rank **20**

Objective: Closure sampling for BGT

Tank Size: 40 bbls (removed while onsite)

Liner: Yes. 4-6 inches of gravel and mud below tank.

Observations: No staining or indication of a release.

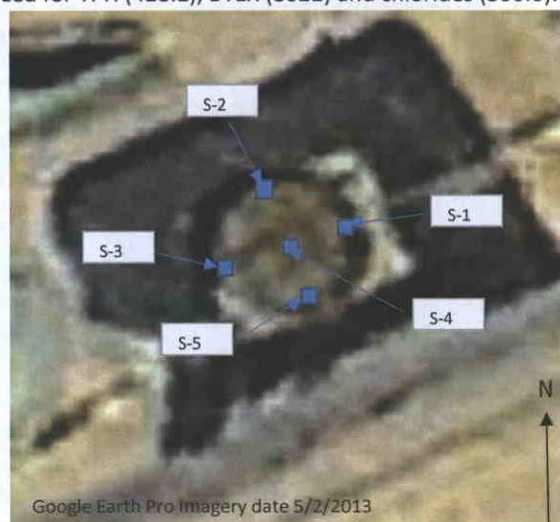
Notes: NMOCD scheduled to attend closure at 10 am. Waited until 10:40 am before proceeding w/o NMOCD representative.

Field Sampling Information

Name	Type of Sample	Collection Time	Collection Location	VOCs ¹ (ppm)	VOCs time	TPH ² mg/kg	TPH Time	Chloride ³ mg/kg	Chloride Time
SC-1	composite	11:07	see below	4.2	11:18	21.8	11:20	80	11:25

SC-1 is a 5-point composite of S-1 through S-5, collected 0.5 ft below tank liner.

Sample SC-1 was laboratory analyzed for TPH (418.1), BTEX (8021) and chlorides (300.0).



Field Sampling Notes:

¹ Field screening for volatile organic compounds (VOC) vapors was conducted with a photo-ionization detector (PID). Before beginning field screening, the PID was calibrated with 100 parts per million (ppm) isobutylene gas.

² Field analysis for TPH was conducted using a total hydrocarbon analyzer. Prior to field analysis, the machine was calibrated following the manufacturer's procedure which includes calculation of a calibration curve using known concentration standards.

³ Field screening for chlorides was conducted using the Hach chloride low range test kit. Chloride concentrations are determined by drop count titration method using silver nitrate titrant.



*Hall Environmental Analysis Laboratory
4901 Hawkins NE
Albuquerque, NM 87109
TEL: 505-345-3975 FAX: 505-345-4107
Website: www.hallenvironmental.com*

July 31, 2015

Deborah Watson
Rule Engineering LLC
501 Airport Dr., Ste 205
Farmington, NM 87401
TEL: (505) 860-2712
FAX

RE: San Juan 29-5 Unit 55

OrderNo.: 1507B27

Dear Deborah Watson:

Hall Environmental Analysis Laboratory received 1 sample(s) on 7/23/2015 for the analyses presented in the following report.

These were analyzed according to EPA procedures or equivalent. To access our accredited tests please go to www.hallenvironmental.com or the state specific web sites. In order to properly interpret your results it is imperative that you review this report in its entirety. See the sample checklist and/or the Chain of Custody for information regarding the sample receipt temperature and preservation. Data qualifiers or a narrative will be provided if the sample analysis or analytical quality control parameters require a flag. When necessary, data qualifiers are provided on both the sample analysis report and the QC summary report, both sections should be reviewed. All samples are reported, as received, unless otherwise indicated. Lab measurement of analytes considered field parameters that require analysis within 15 minutes of sampling such as pH and residual chlorine are qualified as being analyzed outside of the recommended holding time.

Please don't hesitate to contact HEAL for any additional information or clarifications.

ADHS Cert #AZ0682 -- NMED-DWB Cert #NM9425 -- NMED-Micro Cert #NM0190

Sincerely,

Andy Freeman
Laboratory Manager
4901 Hawkins NE
Albuquerque, NM 87109

Analytical Report

Lab Order 1507B27

Date Reported: 7/31/2015

Hall Environmental Analysis Laboratory, Inc.

CLIENT: Rule Engineering LLC

Client Sample ID: SC-1

Project: San Juan 29-5 Unit 55

Collection Date: 7/22/2015 11:07:00 AM

Lab ID: 1507B27-001

Matrix: SOIL

Received Date: 7/23/2015 8:05:00 AM

Analyses	Result	RL	Qual	Units	DF	Date Analyzed	Batch
EPA METHOD 418.1: TPH							Analyst: TOM
Petroleum Hydrocarbons, TR	ND	20		mg/Kg	1	7/29/2015	20488
EPA METHOD 300.0: ANIONS							Analyst: LGT
Chloride	ND	1.5		mg/Kg	1	7/29/2015 11:28:04 AM	20513
EPA METHOD 8260B: VOLATILES SHORT LIST							Analyst: DJF
Benzene	ND	0.050		mg/Kg	1	7/27/2015 5:20:57 PM	20434
Toluene	ND	0.050		mg/Kg	1	7/27/2015 5:20:57 PM	20434
Ethylbenzene	ND	0.050		mg/Kg	1	7/27/2015 5:20:57 PM	20434
Xylenes, Total	ND	0.099		mg/Kg	1	7/27/2015 5:20:57 PM	20434
Surr: 1,2-Dichloroethane-d4	106	70-130		%REC	1	7/27/2015 5:20:57 PM	20434
Surr: 4-Bromofluorobenzene	103	70-130		%REC	1	7/27/2015 5:20:57 PM	20434
Surr: Dibromofluoromethane	115	70-130		%REC	1	7/27/2015 5:20:57 PM	20434
Surr: Toluene-d8	96.3	70-130		%REC	1	7/27/2015 5:20:57 PM	20434

Refer to the QC Summary report and sample login checklist for flagged QC data and preservation information.

Qualifiers:	*	Value exceeds Maximum Contaminant Level.	B	Analyte detected in the associated Method Blank
	D	Sample Diluted Due to Matrix	E	Value above quantitation range
	H	Holding times for preparation or analysis exceeded	J	Analyte detected below quantitation limits
	ND	Not Detected at the Reporting Limit	P	Sample pH Not In Range
	R	RPD outside accepted recovery limits	RL	Reporting Detection Limit
	S	% Recovery outside of range due to dilution or matrix		

QC SUMMARY REPORT

Hall Environmental Analysis Laboratory, Inc.

WO#: 1507B27

31-Jul-15

Client: Rule Engineering LLC

Project: San Juan 29-5 Unit 55

Sample ID	MB-20513	SampType:	MBLK	TestCode:	EPA Method 300.0: Anions					
Client ID:	PBS	Batch ID:	20513	RunNo:	27852					
Prep Date:	7/29/2015	Analysis Date:	7/29/2015	SeqNo:	837706	Units:	mg/Kg			
Analyte	Result	PQL	SPK value	SPK Ref Val	%REC	LowLimit	HighLimit	%RPD	RPDLimit	Qual
Chloride	ND	1.5								

Sample ID	LCS-20513	SampType:	LCS	TestCode:	EPA Method 300.0: Anions					
Client ID:	LCSS	Batch ID:	20513	RunNo:	27852					
Prep Date:	7/29/2015	Analysis Date:	7/29/2015	SeqNo:	837707	Units:	mg/Kg			
Analyte	Result	PQL	SPK value	SPK Ref Val	%REC	LowLimit	HighLimit	%RPD	RPDLimit	Qual
Chloride	15	1.5	15.00	0	98.5	90	110			

Sample ID	1507B27-001AMS	SampType:	MS	TestCode:	EPA Method 300.0: Anions					
Client ID:	SC-1	Batch ID:	20513	RunNo:	27852					
Prep Date:	7/29/2015	Analysis Date:	7/29/2015	SeqNo:	837712	Units:	mg/Kg			
Analyte	Result	PQL	SPK value	SPK Ref Val	%REC	LowLimit	HighLimit	%RPD	RPDLimit	Qual
Chloride	15	1.5	15.00	0	99.1	64.2	131			

Sample ID	1507B27-001AMSD	SampType:	MSD	TestCode:	EPA Method 300.0: Anions					
Client ID:	SC-1	Batch ID:	20513	RunNo:	27852					
Prep Date:	7/29/2015	Analysis Date:	7/29/2015	SeqNo:	837713	Units:	mg/Kg			
Analyte	Result	PQL	SPK value	SPK Ref Val	%REC	LowLimit	HighLimit	%RPD	RPDLimit	Qual
Chloride	15	1.5	15.00	0	98.0	64.2	131	1.09	20	

Qualifiers:

- * Value exceeds Maximum Contaminant Level.
- D Sample Diluted Due to Matrix
- H Holding times for preparation or analysis exceeded
- ND Not Detected at the Reporting Limit
- R RPD outside accepted recovery limits
- S % Recovery outside of range due to dilution or matrix

- B Analyte detected in the associated Method Blank
- E Value above quantitation range
- J Analyte detected below quantitation limits
- P Sample pH Not In Range
- RL Reporting Detection Limit

QC SUMMARY REPORT

Hall Environmental Analysis Laboratory, Inc.

WO#: 1507B27

31-Jul-15

Client: Rule Engineering LLC

Project: San Juan 29-5 Unit 55

Sample ID	MB-20488	SampType:	MBLK	TestCode:	EPA Method 418.1: TPH					
Client ID:	PBS	Batch ID:	20488	RunNo:	27831					
Prep Date:	7/28/2015	Analysis Date:	7/29/2015	SeqNo:	836825	Units:	mg/Kg			
Analyte	Result	PQL	SPK value	SPK Ref Val	%REC	LowLimit	HighLimit	%RPD	RPDLimit	Qual
Petroleum Hydrocarbons, TR	ND	20								

Sample ID	LCS-20488	SampType:	LCS	TestCode:	EPA Method 418.1: TPH					
Client ID:	LCSS	Batch ID:	20488	RunNo:	27831					
Prep Date:	7/28/2015	Analysis Date:	7/29/2015	SeqNo:	836826	Units:	mg/Kg			
Analyte	Result	PQL	SPK value	SPK Ref Val	%REC	LowLimit	HighLimit	%RPD	RPDLimit	Qual
Petroleum Hydrocarbons, TR	86	20	100.0	0	85.6	83.6	116			

Sample ID	LCSD-20488	SampType:	LCSD	TestCode:	EPA Method 418.1: TPH					
Client ID:	LCSS02	Batch ID:	20488	RunNo:	27831					
Prep Date:	7/28/2015	Analysis Date:	7/29/2015	SeqNo:	836827	Units:	mg/Kg			
Analyte	Result	PQL	SPK value	SPK Ref Val	%REC	LowLimit	HighLimit	%RPD	RPDLimit	Qual
Petroleum Hydrocarbons, TR	87	20	100.0	0	87.0	83.6	116	1.55	20	

Qualifiers:

- * Value exceeds Maximum Contaminant Level.
- D Sample Diluted Due to Matrix
- H Holding times for preparation or analysis exceeded
- ND Not Detected at the Reporting Limit
- R RPD outside accepted recovery limits
- S % Recovery outside of range due to dilution or matrix

- B Analyte detected in the associated Method Blank
- E Value above quantitation range
- J Analyte detected below quantitation limits
- P Sample pH Not In Range
- RL Reporting Detection Limit

QC SUMMARY REPORT

Hall Environmental Analysis Laboratory, Inc.

WO#: 1507B27

31-Jul-15

Client: Rule Engineering LLC

Project: San Juan 29-5 Unit 55

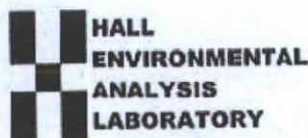
Sample ID	mb-20434		SampType:	MBLK		TestCode:	EPA Method 8260B: Volatiles Short List			
Client ID:	PBS		Batch ID:	20434		RunNo:	27785			
Prep Date:	7/24/2015		Analysis Date:	7/27/2015		SeqNo:	835422		Units: mg/Kg	
Analyte	Result	PQL	SPK value	SPK Ref Val	%REC	LowLimit	HighLimit	%RPD	RPDLimit	Qual
Benzene	ND	0.050								
Toluene	ND	0.050								
Ethylbenzene	ND	0.050								
Xylenes, Total	ND	0.10								
Surr: 1,2-Dichloroethane-d4	0.51		0.5000		103	70	130			
Surr: 4-Bromofluorobenzene	0.48		0.5000		97.0	70	130			
Surr: Dibromofluoromethane	0.54		0.5000		107	70	130			
Surr: Toluene-d8	0.47		0.5000		94.4	70	130			

Sample ID	Ics-20434		SampType:	LCS		TestCode:	EPA Method 8260B: Volatiles Short List			
Client ID:	LCSS		Batch ID:	20434		RunNo:	27785			
Prep Date:	7/24/2015		Analysis Date:	7/27/2015		SeqNo:	835423		Units: mg/Kg	
Analyte	Result	PQL	SPK value	SPK Ref Val	%REC	LowLimit	HighLimit	%RPD	RPDLimit	Qual
Benzene	0.99	0.050	1.000	0	99.2	70	130			
Toluene	0.95	0.050	1.000	0	95.3	70	130			
Surr: 1,2-Dichloroethane-d4	0.53		0.5000		106	70	130			
Surr: 4-Bromofluorobenzene	0.50		0.5000		99.5	70	130			
Surr: Dibromofluoromethane	0.52		0.5000		105	70	130			
Surr: Toluene-d8	0.46		0.5000		91.6	70	130			

Qualifiers:

- * Value exceeds Maximum Contaminant Level.
- D Sample Diluted Due to Matrix
- H Holding times for preparation or analysis exceeded
- ND Not Detected at the Reporting Limit
- R RPD outside accepted recovery limits
- S % Recovery outside of range due to dilution or matrix

- B Analyte detected in the associated Method Blank
- E Value above quantitation range
- J Analyte detected below quantitation limits
- P Sample pH Not In Range
- RL Reporting Detection Limit



Hall Environmental Analysis Laboratory
4901 Hawkins NE
Albuquerque, NM 87109
TEL: 505-345-3975 FAX: 505-345-4107
Website: www.hallenvironmental.com

Sample Log-In Check List

Client Name: **RULE ENGINEERING LL**

Work Order Number: **1507B27**

RcptNo: 1

Received by/date:

G.A.

07/23/15

Logged By: **Ashley Gallegos**

7/23/2015 8:05:00 AM

Completed By: **Ashley Gallegos**

7/23/2015 5:40:33 PM

Reviewed By:

CS

07/24/15

Ag

Ag

Chain of Custody

1. Custody seals intact on sample bottles?

Yes ☐

No ☐

Not Present ☒

2. Is Chain of Custody complete?

Yes ☒

No ☐

Not Present ☐

3. How was the sample delivered?

Courier

Log In

4. Was an attempt made to cool the samples?

Yes ☒

No ☐

NA ☐

5. Were all samples received at a temperature of $>0^{\circ}\text{C}$ to 6.0°C ?

Yes ☒

No ☐

NA ☐

6. Sample(s) in proper container(s)?

Yes ☒

No ☐

7. Sufficient sample volume for indicated test(s)?

Yes ☒

No ☐

8. Are samples (except VOA and ONG) properly preserved?

Yes ☒

No ☐

9. Was preservative added to bottles?

Yes ☐

No ☒

NA ☐

10. VOA vials have zero headspace?

Yes ☐

No ☐

No VOA Vials ☒

11. Were any sample containers received broken?

Yes ☐

No ☒

of preserved
bottles checked
for pH:

(<2 or >12 unless noted)

12. Does paperwork match bottle labels?

Yes ☒

No ☐

(Note discrepancies on chain of custody)

13. Are matrices correctly identified on Chain of Custody?

Yes ☒

No ☐

Adjusted?

14. Is it clear what analyses were requested?

Yes ☒

No ☐

15. Were all holding times able to be met?

Yes ☒

No ☐

Checked by:

(If no, notify customer for authorization.)

Special Handling (If applicable)

16. Was client notified of all discrepancies with this order?

Yes ☐

No ☐

NA ☒

Person Notified:

Date

By Whom:

Via:

☐ eMail

☐ Phone

☐ Fax

☐ In Person

Regarding:

Client Instructions:

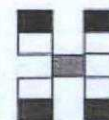
17. Additional remarks:

18. Cooler Information

Cooler No	Temp $^{\circ}\text{C}$	Condition	Seal Intact	Seal No	Seal Date	Signed By
1	1.0	Good	Yes			

Chain-of-Custody Record

Turn-Around Time:
☒ Standard ☐ Rush
 Project Name: San Juan 29-5 Unit 55
 Project #:
 Project Manager: D Watson
 Sampler: D Watson
 On Ice: ☒ Yes ☐ No
 Sample Temperature: 1.0



HALL ENVIRONMENTAL ANALYSIS LABORATORY

www.hallenvironmental.com

4901 Hawkins NE - Albuquerque, NM 87109

Tel. 505-345-3975 Fax 505-345-4107

Analysis Request

BTEX + MTBE + TPH (Gas only)	BTEX + MTBE + TPH (Gas only)	TPH 8015B (GRO / DRO / MRO)	TPH (Method 418.1)	EDB (Method 504.1)	PAH's (8310 or 8270 SIMS)	RCRA 8 Metals	Anions (F, Cl, NO ₃ , NO ₂ , PO ₄ , SO ₄)	8081 Pesticides / 8082 PCB's	8260B (VOA)	8270 (Semi-VOA)	Chlorides	Air Bubbles (Y or N)
<input checked="" type="checkbox"/>	<input type="checkbox"/>	<input type="checkbox"/>	<input checked="" type="checkbox"/>	<input type="checkbox"/>	<input type="checkbox"/>	<input type="checkbox"/>	<input type="checkbox"/>	<input type="checkbox"/>	<input type="checkbox"/>	<input type="checkbox"/>	<input checked="" type="checkbox"/>	<input type="checkbox"/>

Client: Rule Engineering LLC
 Mailing Address: 501 Airport Drive
Farmington NM 87401
 Phone #: 505 860 2712
 Email or Fax#:
 QA/QC Package:
☒ Standard ☐ Level 4 (Full Validation)
 Accreditation:
☐ NELAP ☐ Other _____
☐ EDD (Type) _____

Date	Time	Matrix	Sample Request ID	Container Type and #	Preservative Type	HEAL No.
2/2/15	1107	Soil	SC-1	1-4oz	Cold	1507827-001

Date: 2/2/15	Time: 1700	Relinquished by: <u>Christine Watson</u>	Received by: <u>Christine Watson</u>	Date: 2/2/15	Time: 1700	Remarks: <u>Ball to ConocoPhillips Area 25</u> <u>charge code: 103 81221</u> <u>approver: KG Garcia</u> <u>act code: T110</u> <u>Lead: Fasho Trujillo</u> <u>Danny Padden</u>
Date: 2/2/15	Time: 1748	Relinquished by: <u>Christine Watson</u>	Received by: <u>Christine Watson</u>	Date: 07/23/15	Time: 0805	

If necessary, samples submitted to Hall Environmental may be subcontracted to other accredited laboratories. This serves as notice of this possibility. Any sub-contracted data will be clearly noted on the analytical report.

