

District I (575) 393-6161
1625 N. French Dr., Hobbs, NM 88240
District II (575) 748-1283
811 S. First St., Artesia, NM 88210
District III (505) 334-6178
1000 Rio Brazos Road, Aztec, NM 87410
District IV (505) 827-8198
1220 S. St. Francis Dr., Santa Fe, NM 87505

State of New Mexico
Energy Minerals and Natural Resources

Oil Conservation Division
1220 South St. Francis Dr.
Santa Fe, NM 87505

OIL CONS. DIV DIST. 3

NOV 13 2015

Form C-106
Revised August 1, 2011

ACT Permit No.

3-12

NOTICE OF INTENTION TO UTILIZE AUTOMATIC CUSTODY TRANSFER EQUIPMENT

Operator WPX Energy Production, LLC

Address 721 S. Main, Aztec, NM 87410 County San Juan

Lease(s) to be served by this ACT Unit NMNM 109398

Pool(s) to be served by this ACT Unit Basin Mancos

Location of ACT System: Unit L Section 03 Township 23N Range 8W

Order No. authorizing commingling between leases if more than one lease is to be served by this system.

N/A

Date

Order No. authorizing commingling between pools if more than one pool is to be served by this system

N/A

Date

Authorized transporter of oil from this system WPXSJB Gathering, LLC

Transporter's address 3303 North 1st Street, Bloomfield, NM 87413

Maximum expected daily through-put for this system: 2,000 BBL/Day

If system fails to transfer oil due to malfunction or otherwise, waste by overflow will be averted by:

CHECK ONE: A. ☐ Automatic shut-down facilities B. ☒ Providing adequate available capacity to receive production
as required by 19.15.18.15.C(8) NMAC during maximum unattended time of lease operation
19.15.18.15.C(9) NMAC

If "A" above is checked, will flowing wells be shut-in at the header manifold or at the wellhead?

Maximum well-head shut-in pressure

If "B" above is checked, how much storage capacity is available above the normal high working level of the

surge tank 500 BBLs.

What is the normal maximum unattended time of lease operation? Sixteen (16) Hours.

What device will be used for measuring oil in this ACT unit?

CHECK ONE: ☐ Positive displacement meter ☐ Weir-type measuring vessel
☐ Positive volume metering chamber ☒ Other; describe Coriolis Meter

Remarks: This LACT will be selling to pipeline

OPERATOR:

I hereby certify above information is true and complete to best of my knowledge and subject ACT system will be installed and operated in accordance with Rule 19.15.18.15 NMAC. Approval of this Form C-106 does not eliminate necessity of an approved C-104 prior to running any oil or gas from this system.

Signature Russell Knight

Printed Name & Title Russell Knight, Operations Superintendent

E-mail Address
russell.knight@wpxenergy.com

Date 11/19/15 Telephone (505) 333-1842

OIL CONSERVATION DIVISION

Approved by: [Signature]

Title: DEPUTY OIL & GAS INSPECTOR

DISTRICT #3

Date: 11/19/15

INSTRUCTIONS: Submit one copy of Form C-106 with following attachments to appropriate district office.

- 1) Lease plat showing all wells which will be produced in ACT system.
- 2) Schematic diagram of battery and ACT equipment showing all major components and means employed to prove accuracy of measuring device.
- 3) Letter from transporter agreeing to utilization of ACT system as shown on schematic diagram.

13

**NOTICE OF INTENTION TO UTILIZE AUTOMATIC CUSTODY TRANSFER EQUIPMENT
CHACO 2308-03E #403H & CHACO 2308-03L #404H/405H PIPELINE LACT UNIT**

WELLS TO BE SERVED BY PIPELINE LACT UNIT:

- ✓ CHACO 2308 -03E #403H / API #30-045-35588 / UNIT E (SW/NW) Sec. 03, T23N, R8W, NMPM
- ✓ CHACO 2308 -03L #404H / API #30-045-35539 / UNIT L (NW/NW) Sec. 03, T23N, R8W, NMPM
- ✓ CHACO 2308 -03L #405H / API #30-045-35538 / UNIT L (NW/NW) Sec. 03, T23N, R8W, NMPM

19.15.18.15 AUTOMATIC CUSTODY TRANSFER EQUIPMENT:

A. Oil shall be received and measured in facilities of an approved design. The facilities shall permit the testing of each well at reasonable intervals and may be comprised of manually gauged, closed stock tanks for which the operator of the ACT system has prepared proper strapping tables, or of ACT equipment. The division shall permit ACT equipment's use only after the operator complies with the following. The operator shall file with the division form C-106 and receive approval for use of the ACT equipment prior to transferring oil through the ACT system. The carrier shall not accept delivery of oil through the ACT system until the division has approved form C-106.

- *Summary is attached to Form C-106 Notice of Intent to Utilize Automatic Custody Transfer Equipment*

B. The operator of the ACT system shall submit form C-106 to the appropriate division district office, which is accompanied by the following:

- (1) plat of the lease showing all wells that the any well operator will produce into the ACT system;

- *Attached as part of Form C-106 Notice of Intent*

(2) schematic diagram of the ACT equipment, showing on the diagram all major components such as surge tanks and their capacity, extra storage tanks and their capacity, transfer pumps, monitors, reroute valves, treaters, samplers, strainers, air and gas eliminators, back pressure valves and metering devices (indicating type and capacity, *i.e.* whether automatic measuring tank, positive volume metering chamber, weir-type measuring vessel or positive displacement meter); the schematic diagram shall also show means employed to prove the measuring device's accuracy; and

- *Attached as part of Form C-106 Notice of Intent*

- (3) letter from transporter agreeing to utilization of ACT system as shown on schematic diagram.

- *Attached as part of Form C-106 Notice of Intent*

C. The division shall not approve form C-106 unless the operator of the ACT system will install and operate the ACT system in compliance with the following requirements.

(1) Provision is made for accurate determination and recording of uncorrected volume and applicable temperature, or of temperature corrected volume. The system's overall accuracy shall equal or surpass manual methods.

- *The LACT system is more accurate when compared to a manual tank sale. It is proved per BLM Onshore Order #4 Measurement of Oil and API MPMS Chapter 4 Proving Systems; with a volumetric prover that meets the requirements set forth in Onshore Order #4. The LACT also has a temperature RTD which will be calibrated semi-annually, unless more frequent verification is requested by the division.*

(2) Provision is made for representative sampling of the oil transferred for determination of API gravity and BS&W content.

- *The LACT is equipped with a flow proportional sampler (sample probe and actuated valve). The sampled fluid is stored in a sealed cylinder that is used for API gravity and S&W determination.*

(3) Provision is made if required by either the oil's producer or the transporter to give adequate assurance that the ACT system runs only merchantable oil.

- *The LACT is equipped with a water cut analyzer that communicates with the flow computer. When the S&W set point is reached the divert valve will engage sending non-merchantable oil to a divert tank. The set point can be adjusted in the flow computer but only if agreed upon by both shipper and producer.*

(4) Provision is made for set-stop counters to stop the flow of oil through the ACT system at or prior to the time the allowable has been run. Counters shall provide non-reset totalizers that are visible for inspection at all times.

- *The Coriolis meter has non-resettable totalizer which is always visibly available on the LCD display.*

(5) Necessary controls and equipment are enclosed and sealed, or otherwise arranged to provide assurance against, or evidence of, accidental or purposeful mismeasurement resulting from tampering.

- *Required ports are sealed and tracked in the seal log.*

(6) The ACT system's components are properly sized to ensure operation within the range of their established ratings. All system components that require periodic calibration or inspection for proof of continued accuracy are readily accessible; the frequency and methods of the calibration or inspection shall be as set forth in Paragraph (12) of Subsection C of 19.15.18.15 NMAC.

- *The Coriolis is proved per BLM Onshore Order #4 Measurement of Oil and API MPMS Chapter 4 Proving Systems; with a volumetric prover that meets the requirements set forth in Onshore Order #4. The prover is NIST traceable and water drawn on a bi-annual basis. Proving will be consistent with Onshore Order #4, unless a variance is granted by the Division. NMOC representatives are sent the schedule to witness if desired. The temperature transmitter is verified on a semi-annual basis, unless more frequent verification is requested by the Division. The water cut analyzer is calibrated as needed.*

(7) The control and recording system includes adequate fail-safe features that provide assurance against mismeasurement in the event of power failure, or the failure of the ACT system's component parts.

- *In the event of power failure, the divert valve mechanically goes to "failed state" and no longer sales oil but only sends it to the divert tank.*
- *All of the historized volume data is stored in flow computer memory with battery backup and is also transmitted by SCADA, multiple times a day, to an office server. So even during a power failure no oil volume is lost.*
- *In the event of a malfunction, the LACT unit is programmed to shut off and divert valve is forced to close and no longer sales oil but only sends it to the divert tank. The malfunction is also logged by the flow computer.*

(8) The ACT system and allied facilities include fail-safe equipment as may be necessary, including high level switches in the surge tank or overflow storage tank that, in the event of power failure or malfunction of the ACT or other equipment, will shut down artificially lifted wells connected to the ACT system and will shut in flowing wells at the well-head or at the header manifold, in which latter case the operator of the ACT system shall pressure test all flowlines to at least 1½ times the maximum well-head shut-in pressure prior to the ACT system's initial use and every two years thereafter.

- *Hi level switches are in place and will shut the well in at the inlet to the production unit in the event of a full tank. Flow lines were tested to 1 ½ times shut in pressure at initial construction. Testing will commence every two years to ensure piping integrity.*

(9) As an alternative to the requirements of Paragraph (8) of Subsection C of 19.15.18.15 NMAC the producer shall provide and at all times maintain a minimum of available storage capacity above the normal high working level of the surge tank to receive and hold the amount of oil that may be produced during maximum unattended time of lease operation.

- *N/A*

(10) In all ACT systems employing automatic measuring tanks, weir-type measuring vessels, positive volume metering chambers or any other volume measuring container, the container and allied components shall be properly calibrated prior to initial use and shall be operated, maintained and inspected as necessary to ensure against incrustation, changes in clingage factors, valve leakage or other leakage and improper action of floats, level detectors, etc.

- *N/A – Coriolis Meter*

(11) In ACT systems employing positive displacement meters, the meter and allied components shall be properly calibrated prior to initial use and shall be operated, maintained and inspected as necessary to ensure against oil mismeasurement.

- *The Coriolis is proved per BLM Onshore Order #4 Measurement of Oil and API MPMS Chapter 4 Proving Systems; with a volumetric prover that meets the requirements set forth in Onshore Order #4. The prover is NIST traceable and water drawn on a bi-annual basis. Monthly proving will continue per the rule, unless a variance is granted by the Division. NMOCD representatives are sent the schedule to witness if desired. The temperature transmitter is verified on a semi-annual basis, unless more frequent verification is requested by the Division.*

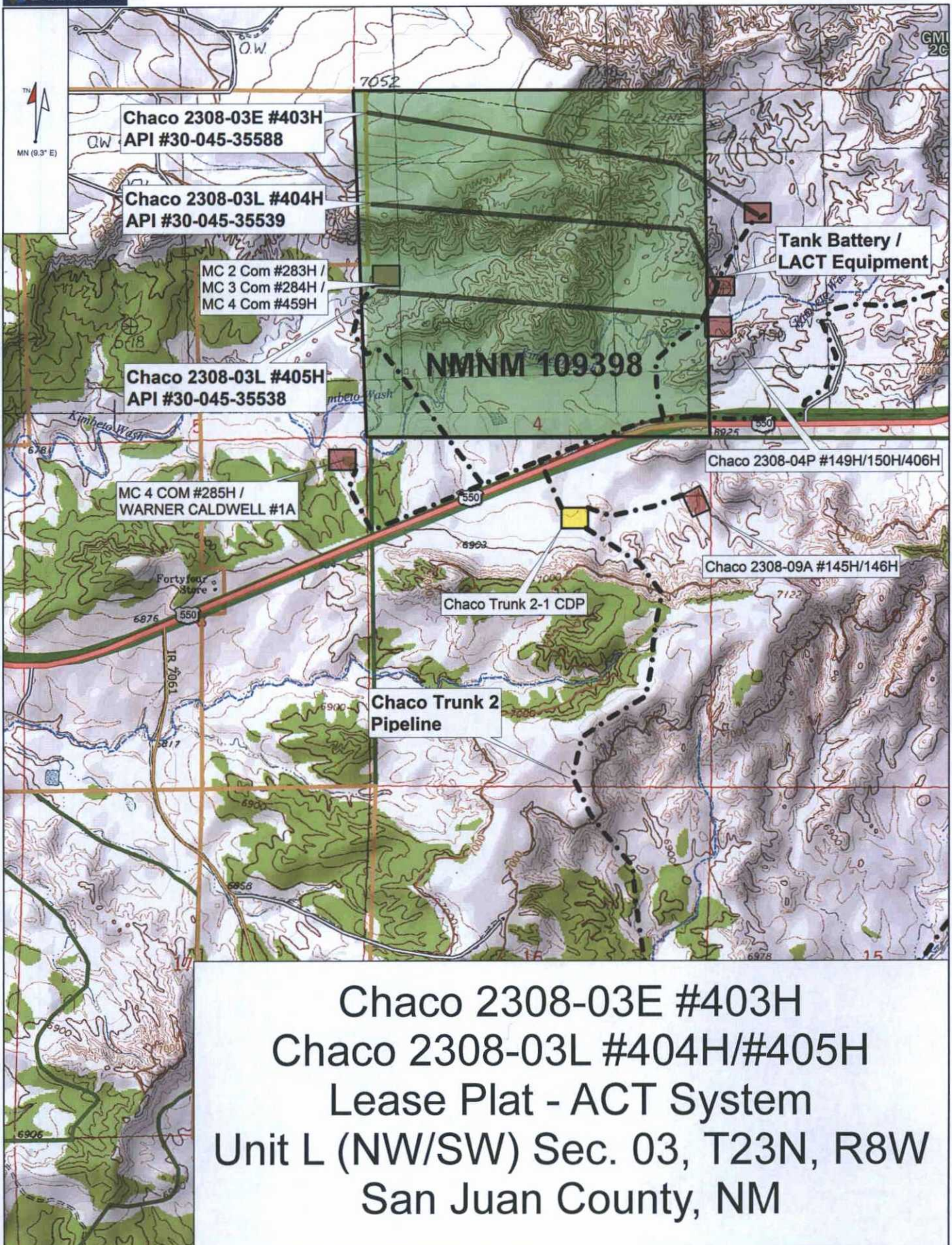
(12) The operator of the ACT system shall check the measuring and recording devices of ACT systems for accuracy at least once each month unless it has obtained an exception to such determination from the division. Where applicable, the operator of the ACT system shall use API standard 1101, Measurement of Petroleum Hydrocarbons by Positive Displacement Meter. Meters may be proved against master meters, portable prover tanks or prover tanks permanently installed on the lease. If the operator of the ACT system uses permanently installed prover tanks, the distance between the opening and closing levels and the provision for determining the opening and closing readings shall be sufficient to detect variations of 5/100 of one percent. The operator of the ACT system shall file reports of determination on the division form entitled "meter test report" or on another acceptable form in duplicate with the appropriate division district office.

- *The Coriolis is proved per BLM Onshore Order #4 Measurement of Oil and API MPMS Chapter 4 Proving Systems; with a volumetric prover that meets the requirements set forth in Onshore Order #4. The prover is NIST traceable and water drawn on a bi-annual basis. Monthly proving will continue per the rule, unless a variance is granted by the Division. NMOCD representatives are sent the schedule to witness if desired. The temperature transmitter is verified on a semi-annual basis, unless more frequent verification is requested by the Division.*

(13) To obtain an exception to the requirement in Paragraph (12) of Subsection C of 19.15.18.15 NMAC that all measuring and recording devices be checked for accuracy once each month, either the producer or transporter may file a request with the director setting forth facts pertinent to the exception. The application shall include a history of the average factors previously obtained, both tabulated and plotted on a graph of factors versus time, showing that the particular installation has experienced no erratic drift. The applicant shall also furnish evidence that the other interested party has agreed to the exception. The director may then set the frequency for determination of the system's accuracy at the interval which the director deems prudent.

- *N/A*

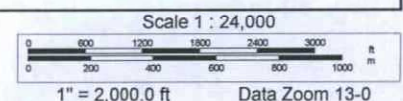
D. The division may revoke its approval of an ACT system's form C-106 if the system's operator fails to operate it in compliance with 19.15.18.15 NMAC.



Data use subject to license.

© DeLorme. Topo North America™ 9.

www.delorme.com



District I
1625 N. French Drive, Hobbs, NM 88240
Phone: (575) 393-6161 Fax: (575) 393-0720

District II
811 S. First Street, Artesia, NM 88210
Phone: (575) 748-1283 Fax: (575) 748-9720

District III
1000 Rio Brazos Road, Aztec, NM 87410
Phone: (505) 334-6178 Fax: (505) 334-6170

District IV
1220 S. St. Francis Drive, Santa Fe, NM 87505
Phone: (505) 476-3460 Fax: (505) 476-3462

State of New Mexico
Energy, Minerals & Natural Resources Department

Form C-102
Revised August 1, 2011

Submit one copy to
Appropriate District Office

OIL CONSERVATION DIVISION

1220 South St. Francis Drive
Santa Fe, NM 87505

☐ AMENDED REPORT

WELL LOCATION AND ACREAGE DEDICATION PLAT

*API Number 30-045-35588		*Pool Code 97232	*Pool Name BASIN MANCOS
*Property Code	*Property Name CHACO 2308-03E		*Well Number 403H
*GRID No. 120782	*Operator Name WPX ENERGY PRODUCTION, LLC		*Elevation 6892'

¹⁰ Surface Location

UL or lot no.	Section	Township	Range	Lot Idn	Feet from the	North/South line	Feet from the	East/West line	County
E	3	23N	8W		1906	NORTH	817	WEST	SAN JUAN

¹¹ Bottom Hole Location If Different From Surface

UL or lot no.	Section	Township	Range	Lot Idn	Feet from the	North/South line	Feet from the	East/West line	County
D	4	23N	8W	4	329	NORTH	231	WEST	SAN JUAN

¹² Dedicated Acres 159.60 Acres N/2 N/2 - Section 4	¹³ Joint or Infill	¹⁴ Consolidation Code	¹⁵ Order No.
--	-------------------------------	----------------------------------	-------------------------

NO ALLOWABLE WILL BE ASSIGNED TO THIS COMPLETION UNTIL ALL INTERESTS HAVE
BEEN CONSOLIDATED OR A NON-STANDARD UNIT HAS BEEN APPROVED BY THE DIVISION

END-OF-LATERAL
329' FNL 231' FWL
SECTION 4, T23N, R8W
LAT: 36.262674°N
LONG: 107.694801°W
DATUM: NAD1927

LAT: 36.262687°N
LONG: 107.695413°W
DATUM: NAD1983

BASE PERFORATION
346' FNL 338' FWL
SECTION 4, T23N, R8W
LAT: 36.262626°N
LONG: 107.694436°W
DATUM: NAD1927

LAT: 36.262639°N
LONG: 107.695048°W
DATUM: NAD1983

POINT-OF-ENTRY
1121' FNL 387' FEL
SECTION 4, T23N, R8W
LAT: 36.260482°N
LONG: 107.678865°W
DATUM: NAD1927

LAT: 36.260495°N
LONG: 107.679476°W
DATUM: NAD1983

SURFACE LOCATION
1906' FNL 817' FWL
SECTION 3, T23N, R8W
LAT: 36.258319°N
LONG: 107.674724°W
DATUM: NAD1927

LAT: 36.258332°N
LONG: 107.675335°W
DATUM: NAD1983

¹⁷ OPERATOR CERTIFICATION

I hereby certify that the information contained herein is true and complete to the best of my knowledge and belief, and that this organization either owns a working interest or unleased mineral interest in the land including the proposed bottom-hole location or has a right to drill this well at this location pursuant to a contract with an owner of such a mineral or working interest, or to a voluntary pooling agreement or a compulsory pooling order heretofore entered by the division.

Signature _____ Date _____

Printed Name _____

E-mail Address _____

¹⁸ SURVEYOR CERTIFICATION

I hereby certify that the well location shown on this plat was plotted from field notes of actual surveys made by me or under my supervision, and that the same is true and correct to the best of my belief.

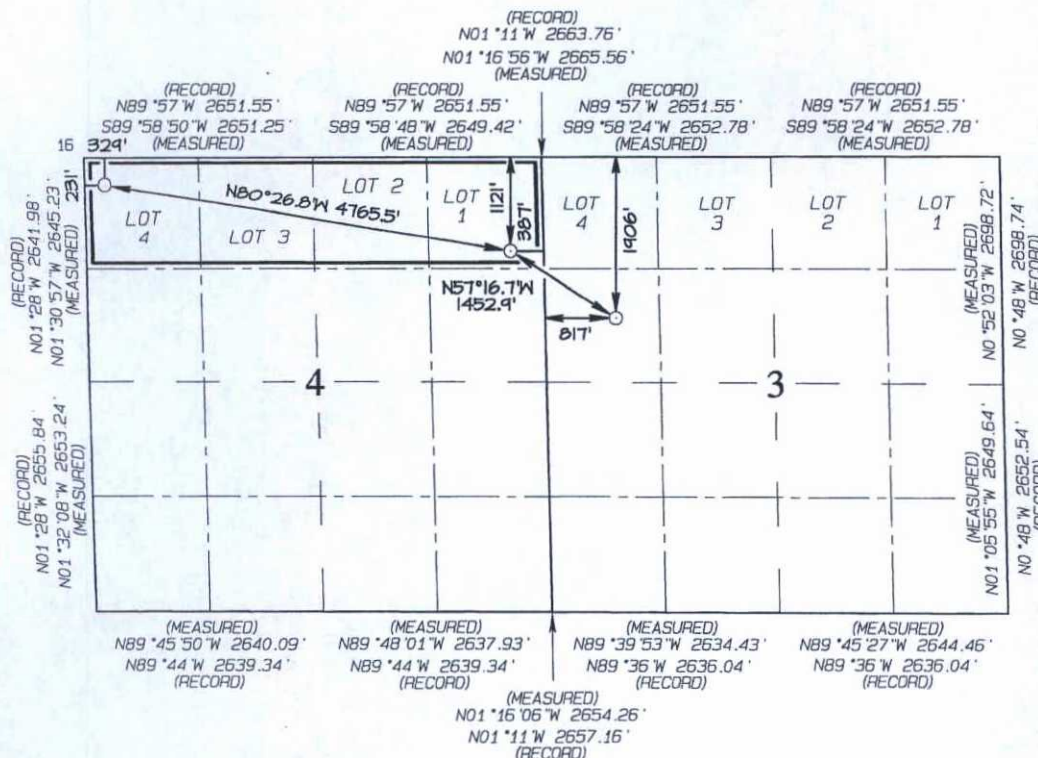
Date Revised: NOVEMBER 4, 2014
Survey Date: FEBRUARY 26, 2014

Signature and Seal of Professional Surveyor



JASON C. EDWARDS

Certificate Number 15269



DISTRICT I
1625 N. French Dr., Hobbs, N.M. 88240
Phone: (575) 393-6161 Fax: (575) 393-0720

DISTRICT II
811 S. First St., Artesia, N.M. 88210
Phone: (575) 748-1283 Fax: (575) 748-9720

DISTRICT III
1000 Rio Brazos Rd., Aztec, N.M. 87410
Phone: (505) 334-6178 Fax: (505) 334-6170

DISTRICT IV
1220 S. St. Francis Dr., Santa Fe, N.M. 87505
Phone: (505) 476-3460 Fax: (505) 476-3462

State of New Mexico
Energy, Minerals & Natural Resources Department

OIL CONSERVATION DIVISION

1220 South St. Francis Dr.
Santa Fe, N.M. 87505

Form C-102

Revised August 1, 2011

Submit one copy to appropriate
District Office

"AS DRILLED"

☒ AMENDED REPORT

WELL LOCATION AND ACREAGE DEDICATION PLAT

¹ API Number 30-045-35539	² Pool Code 97232	³ Pool Name BASIN MANCOS
⁴ Property Code 313652	⁵ Property Name HEROS	⁶ Well Number 002H
⁷ GRID No. 120782	⁸ Operator Name WPX ENERGY PRODUCTION, LLC	⁹ Elevation 6879

¹⁰ Surface Location

UL or lot no.	Section	Township	Range	Lot Idn	Feet from the	North/South line	Feet from the	East/West line	County
L	3	23 N	8 W		2268	SOUTH	70	WEST	SAN JUAN

¹¹ Bottom Hole Location If Different From Surface

UL or lot no.	Section	Township	Range	Lot Idn	Feet from the	North/South line	Feet from the	East/West line	County
E	4	23 N	8 W		1742	NORTH	260	WEST	SAN JUAN

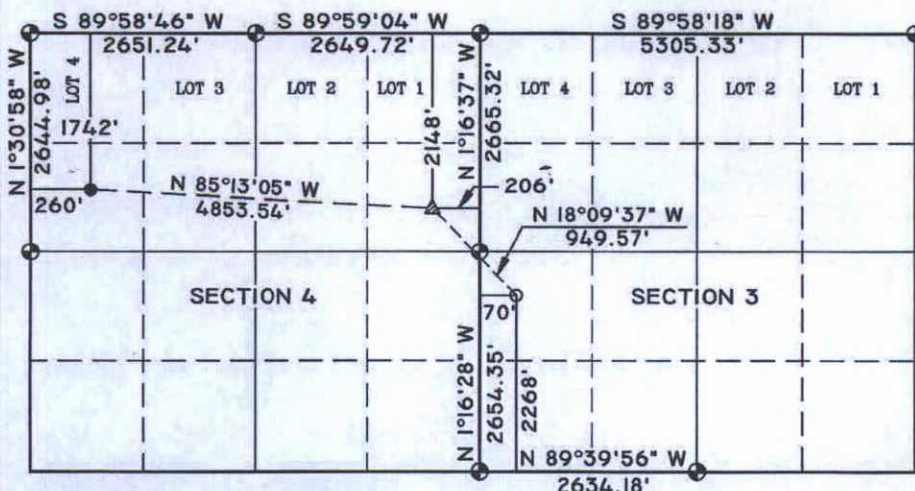
¹² Dedicated Acres 160 ACRES S2/N2	¹³ Joint or Infill	¹⁴ Consolidation Code	¹⁵ Order No.
---	-------------------------------	----------------------------------	-------------------------

NO ALLOWABLE WILL BE ASSIGNED TO THIS COMPLETION UNTIL ALL INTERESTS HAVE BEEN CONSOLIDATED
OR A NON-STANDARD UNIT HAS BEEN APPROVED BY THE DIVISION

16 BOTTOM HOLE
1742' FNL, 260' FWL
LAT: 36.2588009° N
LONG: 107.6951898° W
NAD 83
LAT: 36°15.52729' N
LONG: 107°41.67469' W
NAD 27

LANDING POINT
2148' FNL, 206' FEL
LAT: 36.2576693° N
LONG: 107.6787865° W
NAD 83
LAT: 36°15.45940' N
LONG: 107°40.69052' W
NAD 27

SURFACE
2268' FSL, 70' FWL
LAT: 36.2551894° N
LONG: 107.6777876° W
NAD 83
LAT: 36°15.31060' N
LONG: 107°40.63059' W
NAD 27



BEARINGS & DISTANCES SHOWN ARE
REFERENCED TO THE NEW MEXICO
COORDINATE SYSTEM, WEST ZONE, NAD 83,
UNLESS OTHERWISE NOTED.

NOTE: THE COORDINATES FOR THE LANDING
POINT AND THE BOTTOM HOLE LOCATION CAME
FROM THE CERTIFIED FINAL DIRECTIONAL
SURVEY CONDUCTED BY CATHEDRAL ON 07/31/14.

LEGEND:

- = SURFACE
LOCATION
- = BOTTOM HOLE
LOCATION
- ⊙ = FOUND 1947 U.S.G.L.O.
BRASS CAP
- △ = LANDING POINT

17 OPERATOR CERTIFICATION

I hereby certify that the information contained herein is
true and complete to the best of my knowledge and belief,
and that this organization either owns a working interest
or unleased mineral interest in the land including the
proposed bottom hole location or has a right to drill this
well at this location pursuant to a contract with an
owner of such a mineral or working interest, or to a
voluntary pooling agreement or a compulsory pooling order
heretofore entered by the division.

Signature _____ Date _____
Larry Higgins
Printed Name _____
larry.higgins@wpxenergy.com
E-mail Address _____

18 SURVEYOR CERTIFICATION

I hereby certify that the well location shown on this plat
was plotted from field notes of actual surveys made by me
or under my supervision, and that the same is true and
correct to the best of my belief.

03/27/14
Date of Survey
Signature and Seal of Professional Surveyor:

17078
Certificate Number
United Field Services, Inc.

UNITED STATES
DEPARTMENT OF THE INTERIOR
BUREAU OF LAND MANAGEMENT

SEP 23 2014

FORM APPROVED
OMB No. 1004-0137
Expires: March 31, 2007

SUNDRY NOTICES AND REPORTS ON WELLS

~~Do not use this form for proposals to drill or to re-enter an abandoned well. Use Form 3160-3 (APD) for such proposals.~~

SUBMIT IN TRIPLICATE - Other instructions on page 2.

1. Type of Well

☒ Oil Well ☐ Gas Well ☐ Other

2. Name of Operator

WPX Energy Production, LLC

3a. Address

PO Box 640 Aztec, NM 87410

3b. Phone No. (include area code)

505-333-1808

4. Location of Well (Footage, Sec., T., R., M., or Survey Description)

SHL: 2268' FSL & 70' FWL SEC 3 23N 8W

BHL: 1742' FNL & 260' FWL SEC 4 23N 8W

5. Lease Serial No.

NMNM 109398

6. If Indian, Allottee or Tribe Name

RCVD SEP 29 '14

7. If Unit of CA/Agreement, Name and/or No.

OIL CONS. DIV.

8. Well Name and No.

Chaco 2308-03L #404H

9. API Well No.

30-045-35539

DIST. 3

10. Field and Pool or Exploratory Area

Basin Mancos

11. Country or Parish, State

San Juan, NM

12. CHECK THE APPROPRIATE BOX(ES) TO INDICATE NATURE OF NOTICE, REPORT OR OTHER DATA

TYPE OF SUBMISSION

TYPE OF ACTION

☐ Notice of Intent☐ Acidize☐ Deepen☐ Production
(Start/Resume)☐ Water Shut-Off☒ Subsequent Report☐ Alter Casing☐ Fracture Treat☐ Reclamation☐ Well Integrity☐ Casing Repair☐ New Construction☐ Recomplete☒ Other☐ Change Plans☐ Plug and Abandon☐ Temporarily

NAME CHANGE

☐ Final Abandonment Notice☐ Convert to Injection☐ Plug Back☐ Water Disposal

13. Describe Proposed or Completed Operation: Clearly state all pertinent details, including estimated starting date of any proposed work and approximate duration thereof. If the proposal is to deepen directionally or recompleat horizontally, give subsurface locations and measured and true vertical depths of all pertinent markers and zones. Attach the Bond under which the work will be performed or provide the Bond No. on file with BLM/BIA. Required subsequent reports must be filed within 30 days following completion of the involved operations. If the operation results in a multiple completion or recompleat in a new interval, a Form 3160-4 must be filed once testing has been completed. Final Abandonment Notices must be filed only after all requirements, including reclamation, have been completed and the operator has determined that the site is ready for final inspection.)

WPX would like to change the well name from the HEROS #002H to the Chaco 2308-03L #404H.

14. I hereby certify that the foregoing is true and correct.

Name (Printed/Typed)

Larry Higgins

Title Regulatory Specialist

Signature

Date 9/23/14

THIS SPACE FOR FEDERAL OR STATE OFFICE USE

Approved by

Title

ACCEPTED FOR RECORD

Date

Conditions of approval, if any, are attached. Approval of this notice does not warrant or certify that the applicant holds legal or equitable title to those rights in the subject lease which would entitle the applicant to conduct operations thereon.

Office

SEP 24 2014

Title 18 U.S.C. Section 1001 and Title 43 U.S.C. Section 1212, make it a crime for any person knowingly and willfully to make to any department or agency of the United States any false, fictitious or fraudulent statements or representations as to any matter within its jurisdiction.

FARMINGTON FIELD OFFICE

NMOCDA

DISTRICT IV
1220 S. St. Francis Dr., Santa Fe, N.M. 87505
Phone: (505) 476-3460 Fax: (505) 476-3462

1220 South St. Francis Dr.
Santa Fe, N.M. 87505

Submit one copy to appropriate
District Office

☒ AMENDED REPORT

¹ API Number 30-045-35538		² Pool Code 97232	³ Pool Name BASIN MANCOS
⁴ Property Code 313652	⁵ Property Name HEROS		⁶ Well Number 003H
⁷ GRID No. 120782	⁸ Operator Name WFX ENERGY PRODUCTION, LLC		⁹ Elevation 6879

UL or lot no.	Section	Township	Range	Lot Idn	Feet from the	North/South line	Feet from the	East/West line	County
L	3	23 N	8 W		2216	SOUTH	74	WEST	SAN JUAN

UL or lot no.	Section	Township	Range	Lot Idn	Feet from the	North/South line	Feet from the	East/West line	County
L	4	23 N	8 W		2254	SOUTH	250	WEST	SAN JUAN

13 Dedicated Acres 160 ACRES N2/S2 SEC 4	15 Joint or Infill	14 Consolidation Code	16 Order No.
--	--------------------	-----------------------	--------------

2216' FSL, 74' FWL
LAT: 36.2550465° N
LONG: 107.6777705° W
NAD 83
LAT: 36°15.30203' N
LONG: 107°40.62957' W
NAD 27

I hereby certify that the information contained herein is true and complete to the best of my knowledge and belief, and that this organization either owns a working interest or unleased mineral interest in the land including the proposed bottom hole location or has a right to drill this well at this location pursuant to a contract with an owner of such a mineral or working interest, or to a voluntary pooling agreement or a compulsory pooling order heretofore entered by the division.

Signature	Date
Larry Higgins	
Printed Name	
larry.higgins@wpxenergy.com	
E-mail Address	

I hereby certify that the well location shown on this plat was plotted from field notes of actual surveys made by me or under my supervision, and that the same is true and correct to the best of my belief.

Date of Survey _____

Signature and Seal of Professional Supervisor:

97-17078

170/8



~~_____~~

10/10/10

17078

Certificate Number

United Field Services, Inc.

BEARINGS & DISTANCES SHOWN ARE
REFERENCED TO THE NEW MEXICO
COORDINATE SYSTEM, WEST ZONE, NAD 83,
UNLESS OTHERWISE NOTED.

NOTE: THE COORDINATES FOR THE LANDING POINT AND THE BOTTOM HOLE LOCATION CAME FROM THE CERTIFIED FINAL DIRECTIONAL SURVEY CONDUCTED BY CATHEDRAL ON 07/31/14.

LEGEND:

○ = SURFACE LOCATION

● = BOTTOM HOLE LOCATION

⊕ = FOUND 1947 U.S.G.L.O.
BRASS CAP

▲ = LANDING POINT

UNITED STATES
DEPARTMENT OF THE INTERIOR
BUREAU OF LAND MANAGEMENT

FORM APPROVED
OMB No. 1004-0137
Expires: March 31, 2007

SUNDRY NOTICES AND REPORTS ON WELLS
*Do not use this form for proposals to drill or to re-enter an
abandoned well. Use Form 3160-3 (APD) for such proposals.*

SUBMIT IN TRIPLICATE - Other instructions on page 2.

1. Type of Well <input checked="" type="checkbox"/> Oil Well <input type="checkbox"/> Gas Well <input type="checkbox"/> Other		5. Lease Serial No. NMNM 109398
2. Name of Operator WPX Energy Production, LLC		6. If Indian, Allottee or Tribe Name RCVD SEP 29 '14
3a. Address PO Box 640 Aztec, NM 87410	3b. Phone No. (include area code) 505-333-1808	7. If Unit of CA/Agreement, Name and/or No. OIL CONS. DIV.
4. Location of Well (Footage, Sec., T., R., M., or Survey Description) SHL: 2216' FSL & 74' FWL SEC 3 23N 8W BHL: 2254' FSL & 25' FWL SEC 4 23N 8W		8. Well Name and No. Chaco 2308-03L #405H
		9. API Well No. 30-045-35538
		10. Field and Pool or Exploratory Area Basin Mancos
		11. Country or Parish, State San Juan, NM

12. CHECK THE APPROPRIATE BOX(ES) TO INDICATE NATURE OF NOTICE, REPORT OR OTHER DATA

TYPE OF SUBMISSION	TYPE OF ACTION			
<input type="checkbox"/> Notice of Intent	<input type="checkbox"/> Acidize	<input type="checkbox"/> Deepen	<input type="checkbox"/> Production (Start/Resume)	<input type="checkbox"/> Water Shut-Off
<input checked="" type="checkbox"/> Subsequent Report	<input type="checkbox"/> Alter Casing	<input type="checkbox"/> Fracture Treat	<input type="checkbox"/> Reclamation	<input type="checkbox"/> Well Integrity
	<input type="checkbox"/> Casing Repair	<input type="checkbox"/> New Construction	<input type="checkbox"/> Recomplete	<input checked="" type="checkbox"/> Other NAME CHANGE
	<input type="checkbox"/> Change Plans	<input type="checkbox"/> Plug and Abandon	<input type="checkbox"/> Temporarily Abandon	
<input type="checkbox"/> Final Abandonment Notice	<input type="checkbox"/> Convert to Injection	<input type="checkbox"/> Plug Back	<input type="checkbox"/> Water Disposal	

13. Describe Proposed or Completed Operation: Clearly state all pertinent details, including estimated starting date of any proposed work and approximate duration thereof. If the proposal is to deepen directionally or recompleat horizontally, give subsurface locations and measured and true vertical depths of all pertinent markers and zones. Attach the Bond under which the work will be performed or provide the Bond No. on file with BLM/BIA. Required subsequent reports must be filed within 30 days following completion of the involved operations. If the operation results in a multiple completion or recompleat in a new interval, a Form 3160-4 must be filed once testing has been completed. Final Abandonment Notices must be filed only after all requirements, including reclamation, have been completed and the operator has determined that the site is ready for final inspection.)

WPX would like to change the well name from the HEROS #003H to the Chaco 2308-03L #405H.

14. I hereby certify that the foregoing is true and correct. Name (Printed/Typed) Larry Higgins		Title Regulatory Specialist	
Signature <i>Larry Higgins</i>		Date 9/23/14	

THIS SPACE FOR FEDERAL OR STATE OFFICE USE

Approved by	Title	Date
Conditions of approval, if any, are attached. Approval of this notice does not warrant or certify that the applicant holds legal or equitable title to those rights in the subject lease which would entitle the applicant to conduct operations thereon.	Office	

Title 18 U.S.C. Section 1001 and Title 43 U.S.C. Section 1212, make it a crime for any person knowingly and willfully to make to any department or agency of the United States any false, fictitious or fraudulent statements or representations as to any matter within its jurisdiction.

FARMINGTON FIELD OFFICE
BY *[Signature]*

P-103
SAMPLE PUMP
1/2" HP 1/2" MOTOR
1" HP 1/2" MOTOR
1" HP 1/2" MOTOR
CL. 1.00, 1.00, 1.00

V-100
VAPOR TIGHT NON-PERMEABLE WALL
15 GALLON VAPOR TIGHT
CL. 1.00, 1.00, 1.00

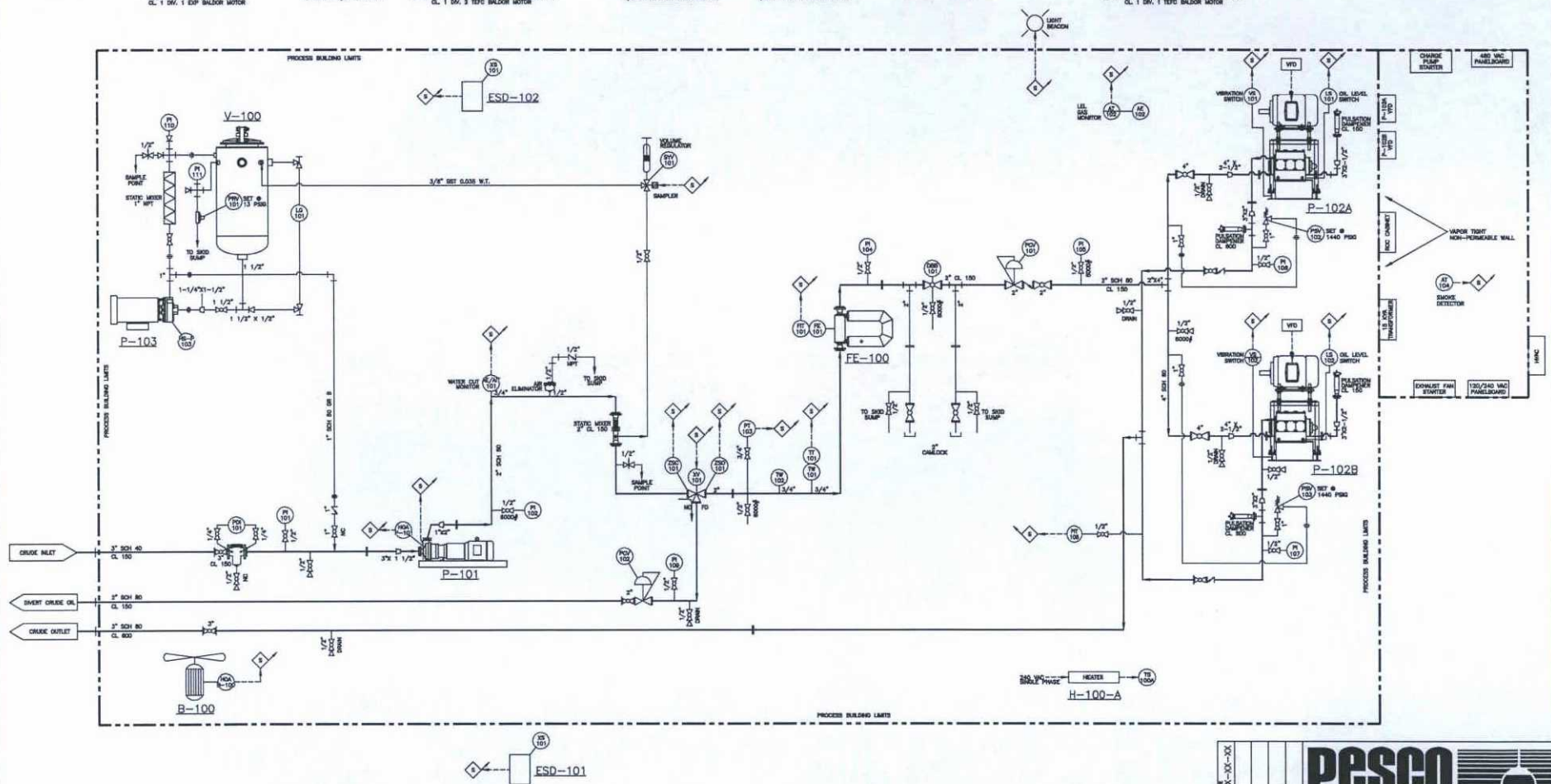
P-101
STANDARD PUMP
1/2" HP 1/2" MOTOR
1" HP 1/2" MOTOR
CL. 1.00, 1.00, 1.00

FE-100
2" MICRO MOTOR FULL COORDINATE
CL. 1.00, 1.00, 1.00

B-100
EXHAUST FAN
1/2" HP 1/2" MOTOR
CL. 1.00, 1.00, 1.00

H-100
HEATER
1/2" HP 1/2" MOTOR
CL. 1.00, 1.00, 1.00

P-102 A/B
NATURAL GAS PUMP
1/2" HP 1/2" MOTOR
1" HP 1/2" MOTOR
CL. 1.00, 1.00, 1.00



pesco process equipment & service company inc	
ALL INFORMATION CONTAINED IN THIS DRAWING, WHETHER PATENTABLE OR NON-PATENTABLE, IS OF A PROPRIETARY NATURE AND IS THE SOLE PROPERTY OF PESCO, INC. REPRODUCTION OR ANY OTHER USE WITHOUT THE EXPRESSED WRITTEN CONSENT OF PESCO, INC. IS STRICTLY PROHIBITED.	
PIPING & INSTRUMENT DIAGRAM	
WPK ENERGY	NONE
DESIGNED BY	DATE
CHECKED BY	DATE
APPROVED BY	DATE
PROJECT NUMBER	14094
DRAWING NUMBER	85-3-0
DATE	06-15-14

From: [Felix, Andrea](#)
To: [Chris Lopez](#)
Cc: [Riley, Heather](#); [VanDenBerg, Randy](#); [Knight, Russell](#); [Jordan, Robert](#); [Richardson, Jason](#); [Lepich, Mark](#)
Subject: WPX SJB Gathering: APPROVED Utilization of LACT Units project
Date: Monday, October 26, 2015 10:32:03 AM
Importance: High

WPX SJB Gathering, LLC agrees with the plan of utilizing LACT units on our pipeline system as part of a pilot project with WPX Energy Production, LLC.

We have actively participated in the LACT unit pilot project with WPX Energy Production, LLC on the below listed wells and we are in agreement on using the LACT as the sales point for these facilities as long as, these LACTS will be proved monthly to comply with regulations.

- NE Chaco Com #166H/167H
- Chaco 2308-11A #407H/408H
- Chaco 2308-24H #153H/154H
- Chaco 2308-24I #155H/156H
- MC 2 Com #283H / MC 3 Com #284H / MC 4 Com #285H / MC 4 Com #459H
- Chaco 2307-17H #163H/275H
- Chaco 2308-09A #145H/146H
- Chaco 2308-16I #147H/148H
- Chaco 2308-14E #151H/152H
- Chaco 2308-03E #403H / Chaco 2308-03L #404H/405H
- Chaco 2308-04P #149H/150H/406H
- NW Lybrook UT #131H/237H/289H
- NW Lybrook UT 132H
- NW Lybrook UT #133H/134H

If you have any questions please feel free to contact me.

Thank you,

Andrea Felix, RWA

Regulatory Specialist Sr.
WPX SJB Gathering, LLC
Office: 505-333-1849
Cell: 505-386-8205



From: Chris Lopez [mailto:chrislopez@eis-llc.com]

Sent: Monday, October 19, 2015 4:09 PM