

RECEIVED

OCT 23 2015

Form 3160-5  
(February 2005)UNITED STATES  
DEPARTMENT OF THE INTERIOR  
BUREAU OF LAND MANAGEMENTFarmington Field Office  
Bureau of Land ManagementFORM APPROVED  
OMB No. 1004-0137  
Expires: March 31, 2007**SUNDRY NOTICES AND REPORTS ON WELLS**  
**Do not use this form for proposals to drill or to re-enter an abandoned well. Use Form 3160-3 (APD) for such proposals.**

SUBMIT IN TRIPLICATE - Other instructions on page 2.

1. Type of Well

☒ Oil Well ☐ Gas Well ☐ Other

2. Name of Operator

WPX Energy Production, LLC

3a. Address

PO Box 640 Aztec, NM 87410

3b. Phone No. (include area code)

505-333-1816

4. Location of Well (Footage, Sec., T., R., M., or Survey Description)

SHL: 1935' FSL &amp; 301' FWL SEC 7 23N 6W

BHL: 2263' FSL &amp; 217' FEL SEC 11 23N 7W

Bureau of Land Management

NMSF 078359

6. If Indian, Allottee or Tribe Name

7. If Unit of CA/Agreement, Name and/or No.  
1328298. Well Name and No.  
NE Chaco Com #183H9. API Well No.  
30-039-3119110. Field and Pool or Exploratory Area  
Chaco Unit NE HZ11. Country or Parish, State  
Rio Arriba, NM

## 12. CHECK THE APPROPRIATE BOX(ES) TO INDICATE NATURE OF NOTICE, REPORT OR OTHER DATA

## TYPE OF SUBMISSION

## TYPE OF ACTION

☐ Notice of Intent☐ Acidize☐ Deepen☐ Production  
(Start/Resume)☐ Water Shut-Off☐ Alter Casing☐ Fracture Treat☐ Reclamation☐ Well Integrity☒ Subsequent Report☐ Casing Repair☐ New Construction☐ Recomplete☒ Other**Install Gas Lift**☐ Final Abandonment Notice☐ Change Plans☐ Plug and Abandon☐ Temporarily  
Abandon☐ Convert to Injection☐ Plug Back☐ Water Disposal

13. Describe Proposed or Completed Operation: Clearly state all pertinent details, including estimated starting date of any proposed work and approximate duration thereof. If the proposal is to deepen directionally or recompletable horizontally, give subsurface locations and measured and true vertical depths of all pertinent markers and zones. Attach the Bond under which the work will be performed or provide the Bond No. on file with BLM/BIA. Required subsequent reports must be filed within 30 days following completion of the involved operations. If the operation results in a multiple completion or recompletable in a new interval, a Form 3160-4 must be filed once testing has been completed. Final Abandonment Notices must be filed only after all requirements, including reclamation, have been completed and the operator has determined that the site is ready for final inspection.)

10/14/15-MIRU.

10/15/15- ND WH. Removed 4 1/2" tbg head. NU Antelope cross over and HWS BOP. RU floor & tongs. LD 2 3/8" production tbg. Completed LD of 181jts of 2 3/8", 4.7#, J-55tbg, F-nipple, 1jt of 4.7# J-55tbg and mule shoe. (Total 182jts). SDFN.

10/16/15-RU San Juan casing to prepare to LD 4 1/2" Tieback string. Pulled seal assembly from TOI-RBP. 148K max pulled (4 1/2", 11.6#, P-110, LTC, 223K-80% Jt strength). LD tool, 4 1/2" landing mandrel & 2' tbg sub. LD 1jt of 4 1/2", P-110, 11.6# csg, 1each 7.5' sub, 1each 6.5' sub and 1 each 2' sub (18.05'). LD 113jts of 4 1/2", P-110, 11.6#csg, 1 each 12.72' market jt, 37jts of 4 1/2", P-110, 11.6#csg. Total 151jts of 4 1/2"csg & 5 each 4 1/2" tbg sub (30.77' of subs). RD San Juan casing.

10/17/15-Run in hole w/ 2 3/8", 4.7#, L-80 tail pipe, 7" packer and gas lift system as follows, EOT @ 6090.19', half mule shoe, 1jt 2 3/8" tbg, 1.78" R-nipple (6055'), 4jts 2 3/8"tbg, 2 7/8" x 2 7/8" x-over, 7" AS1-X Carbide packer(5917'), on/off tool w/ 1.875XN (5915'), 2 7/8"x2 7/8" x-over, 1-4' pup jt 2 3/8", 1 jt 2 3/8" 4.7# L-80 tbg. GLV #1 (5874') 6jts 2 3/8" tbg, 1.875 X-nipple(5677'), 13jts 2 3/8" tbg, GLV #2 (5250') 16jts 2 3/8" tbg, GLV #3 (4725') 15jts 2 3/8" tbg, GLV #4 (4235') 16jts 2 3/8" tbg, GLV #5 (3710') 17jts 2 3/8" tbg, GLV #6 (3152') 16jts 2 3/8" tbg, GLV #7 (2627') 21jts 2 3/8" tbg, GLV #8 (1939') 24jts 2 3/8" tbg, GLV #9 (1154') 35jts tbg, Tubing Hanger, KB 14.5'. All tbg & subs are 2 3/8", 4.7#, L-80, EUE 8rd. RD tongs & floor. ND BOP & Antelope working spool. Set 7" packer w. 10K tension and landed on tbg mandrel in WH. NU wellhead Shut in well. RD move off.

OIL CONS. DIV DIST. 3

14. I hereby certify that the foregoing is true and correct.

Name (Printed/Typed)

Marie E. Jaramilla

Title Permit Tech

OCT 27 2015

Signature

Date 10/23/15

THIS SPACE FOR FEDERAL OR STATE OFFICE USE

Approved by

Title

Date

Conditions of approval, if any, are attached. Approval of this notice does not warrant or certify that the applicant holds legal or equitable title to those rights in the subject lease which would entitle the applicant to conduct operations thereon.

Office

ACCEPTED FOR RECORD

Title 18 U.S.C. Section 1001 and Title 43 U.S.C. Section 1212, make it a crime for any person knowingly and willfully to make to any department or agency of the United States any false, fictitious or fraudulent statements or representations as to any matter within its jurisdiction.



# NE CHACO COM #183H CHACO UNIT NE HZ (OIL)(page 1)

Spud: 7/31/14

Completed: 11/7/14

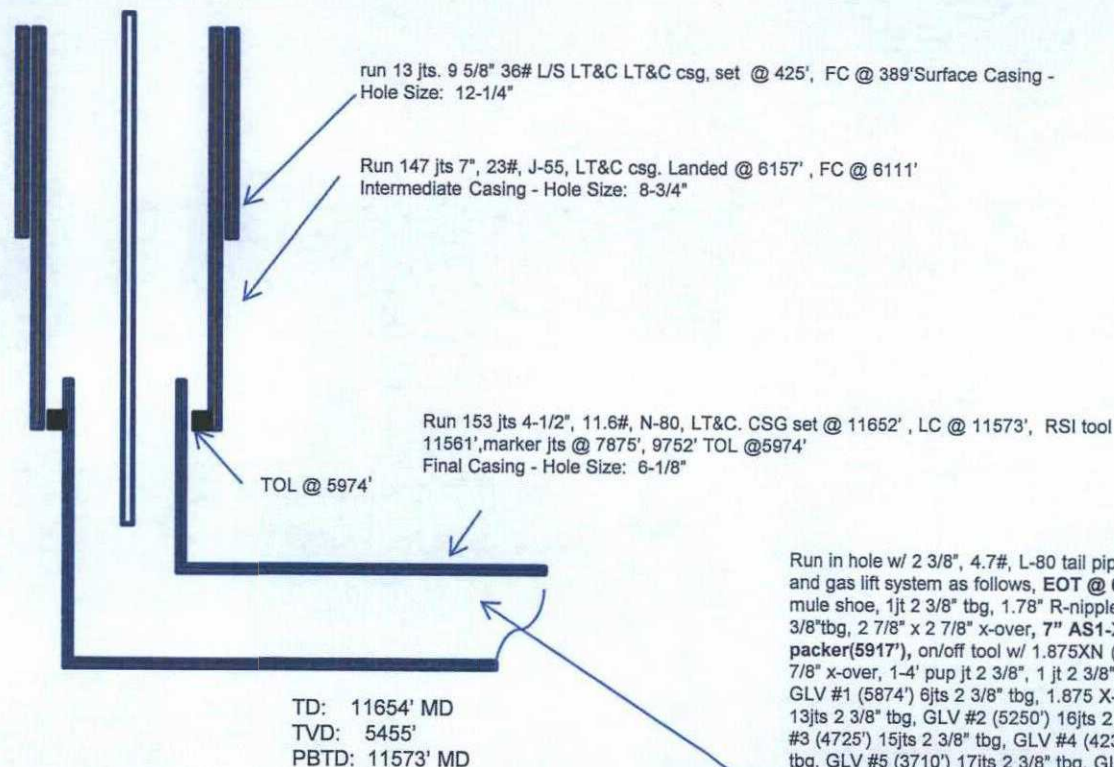
Gas Lift install: 10/17/15

SHL: 1935' FSL & 301' FWL  
NW/4 SW/4 Section 7(L), T23N, R6W

BHL: 2263' FSL & 217' FEL  
NE/4 SE/4 Section 11 (I), T23N, R 7W

RIO ARRIBA NM  
Elevation: 6950  
API: 30-039-31191

Top	MD	TVD
Ojo Alamo	1549	1525
Kirtland	1750	1713
Picture Cliffs	2054	2000
Lewis	2179	2118
Chacra	2507	2429
Cliff House	3661	3513
Menefee	3700	3550
Point Lookout	4460	4271
Mancos	4665	4473
Gallup	5064	4873



Run in hole w/ 2 3/8", 4.7#, L-80 tail pipe, 7" packer and gas lift system as follows, EOT @ 6090.19', half mule shoe, 1jt 2 3/8" tbg, 1.78" R-nipple (6055'), 4jts 2 3/8" tbg, 2 7/8" x 2 7/8" x-over, 7" AS1-X Carbide packer(5917'), on/off tool w/ 1.875XN (5915'), 2 7/8"x2 7/8" x-over, 1-4' pup jt 2 3/8", 1 jt 2 3/8" 4.7# L-80 tbg, GLV #1 (5874') 6jts 2 3/8" tbg, 1.875 X-nipple(5677'), 13jts 2 3/8" tbg, GLV #2 (5250') 16jts 2 3/8" tbg, GLV #3 (4725') 15jts 2 3/8" tbg, GLV #4 (4235') 16jts 2 3/8" tbg, GLV #5 (3710') 17jts 2 3/8" tbg, GLV #6 (3152') 16jts 2 3/8" tbg, GLV #7 (2627') 21jts 2 3/8" tbg, GLV #8 (1939') 24jts 2 3/8" tbg, GLV #9 (1154') 35jts tbg, Tubing Hanger, KB 14.5'. All tbg & subs are 2 3/8", 4.7#, L-80, EUE 8rd. RD tongs & floor. ND BOP & Antelope working spool. Set 7" packer w. 10K tension and landed on tbg mandrel in WH.

HOLE SIZE	CASING	CEMENT	VOLUME	CMT TOP
12-1/4"	9-5/8"	285 sx	222 cu.ft.	Surface
8-3/4"	7"	892 sx	1461 cu. ft.	Surface
6-1/8"	4-1/2"	430 sx	536 cu. ft.	TOL 5974'

MJ 10/23/15