

Submit 1 Copy To Appropriate District Office
District I - (575) 393-6161
1625 N. French Dr., Hobbs, NM 88240
District II - (575) 748-1283
811 S. First St., Artesia, NM 88210
District III - (505) 334-6178
1000 Rio Brazos Rd., Aztec, NM 87410
District IV - (505) 476-3460
1220 S. St. Francis Dr., Santa Fe, NM 87505

State of New Mexico
Energy, Minerals and Natural Resources

Form C-103
Revised August 1, 2011

OIL CONSERVATION DIVISION
1220 South St. Francis Dr.
Santa Fe, NM 87505

WELL API NO. 30-043-21149
5. Indicate Type of Lease STATE <input checked="" type="checkbox"/> FEE <input type="checkbox"/>
6. State Oil & Gas Lease No.
7. Lease Name or Unit Agreement Name Chaco 2206-02H
8. Well Number #225H
9. OGRID Number 120782
10. Pool name or Wildcat Lybrook Gallup

SUNDRY NOTICES AND REPORTS ON WELLS
(DO NOT USE THIS FORM FOR PROPOSALS TO DRILL OR TO DEEPEN OR PLUG BACK TO A DIFFERENT RESERVOIR. USE "APPLICATION FOR PERMIT" (FORM C-101) FOR SUCH PROPOSALS.)

1. Type of Well: Oil Well ☒ Gas Well ☐ Other

2. Name of Operator
WPX Energy Production, LLC

3. Address of Operator
P. O. Box 640, Aztec, NM 87410 (505) 333-1808

4. Well Location

Unit Letter H : 1666' feet from the N line and 278' feet from the E line
Section 2 Township 22N Range 6W NMPM County Sandoval
Unit Letter D : 392' feet from the N line and 280' feet from the W line
Section 2 Township 22N Range 6W

11. Elevation (Show whether DR, RKB, RT, GR, etc.)
6949' GR

12. Check Appropriate Box to Indicate Nature of Notice, Report or Other Data

NOTICE OF INTENTION TO:

PERFORM REMEDIAL WORK ☐ PLUG AND ABANDON ☐
TEMPORARILY ABANDON ☐ CHANGE PLANS ☐
PULL OR ALTER CASING ☐ MULTIPLE COMPL ☐
DOWNHOLE COMMINGLE ☐

OTHER: ☐

SUBSEQUENT REPORT OF:

REMEDIAL WORK ☐ ALTERING CASING ☐
COMMENCE DRILLING OPNS. ☐ P AND A ☐
CASING/CEMENT JOB ☐

OTHER: Tubing/Gas Lift Change ☒

13. Describe proposed or completed operations. (Clearly state all pertinent details, and give pertinent dates, including estimated date of starting any proposed work). SEE RULE 19.15.7.14 NMAC. For Multiple Completions: Attach wellbore diagram of proposed completion or recompletion.

10/8/15- MIRU

10/9/15-10/11/15- Prep Equip then SDFW

10/12/15- Rig Service

10/13/15- Casing psi 0 TBG psi 0 ND prod tree. unlock TBG hanger, POH and lay down. NU BOP stack. Release 4.5 PKR and lay down 7 Joints 2.375 TBG to previous slickline tag and found paraffin. Well started to vent gas, pumped 30 bbls produced water down TBG. Laid down 9 JTS 2.375, RU lubricator RIH w/ 1.89 Broach and could not get through 1st joint. LD lubricator and started out w/ 2.375 TBG, Continued POH until TBG drift would go through TBG. Laid down a total of 105 joints 2.375 TBG. PU lubricator w/ 1.89 Broach and RIH to on/off tool at approx 2500 ft. POH w/ Broach and LD lubricator. POH standing back 42 stands 2.375 TBG laying down 4.5 PKR and BHA. Bumper spring still landed in X - Nipple. Tally and prep BHA. MU production BHA and 4.5 PKR and RIH w/ 4.5 PKR, BHA and 44 stands 2.375 TBG. SDFD

10/14/15-Finish RIH w/ prod TBG

2.375 TBG hanger 44 Joints 2.375 J-55 4.7# TBG GLV #5 1413 40 Joints 2.375 J-55 4.7# TBG GLV #4 2690 36 Joints 2.375 J-55 4.7# TBG GLV #3 3837 30 Joints 2.375 J-55 4.7# TBG GLV #2 4769 25 Joints 2.375 J-55 4.7# TBG 1.875 X-Nipple 5547 6 Joints 2.375 J-55 4.7# TBG GLV #1 5738 1 Joints 2.375 J-55 4.7# TBG On/Off Tool w/ 1.81 F Profile 5771 4.5 Packer 5778 4 Joints 2.375 J-55 4.7# TBG 1.78 R-Nipple 5904 1 Joints 2.375 J-55 4.7# TBG w/ Half Mule EOT 5939

10/15/15-RDMO Test TBG hanger seals good to 3000 psi-good

Spud Date:

7/6/13

Rig Release Date:

7/21/13

OIL CONS. DIV DIST. 3

OCT 23 2015

I hereby certify that the information above is true and complete to the best of my knowledge and belief.

SIGNATURE [Signature] TITLE Permit Tech III DATE 10/22/15

Type or print name Lacey Granillo E-mail address: lacey.granillo@wpxenergy.com PHONE: (505) 333-1816
For State Use Only

APPROVED BY: [Signature] TITLE DEPUTY OIL & GAS INSPECTOR DATE 10/23/15
Conditions of Approval (if any): DISTRICT #3

RV

2

CHACO 2206-02H #225H LYBROOK GALLUP Horizontal

(page 1)

Spud: 7/6/13

Completed: 8/28/13

Install gas lift: 8/17/14

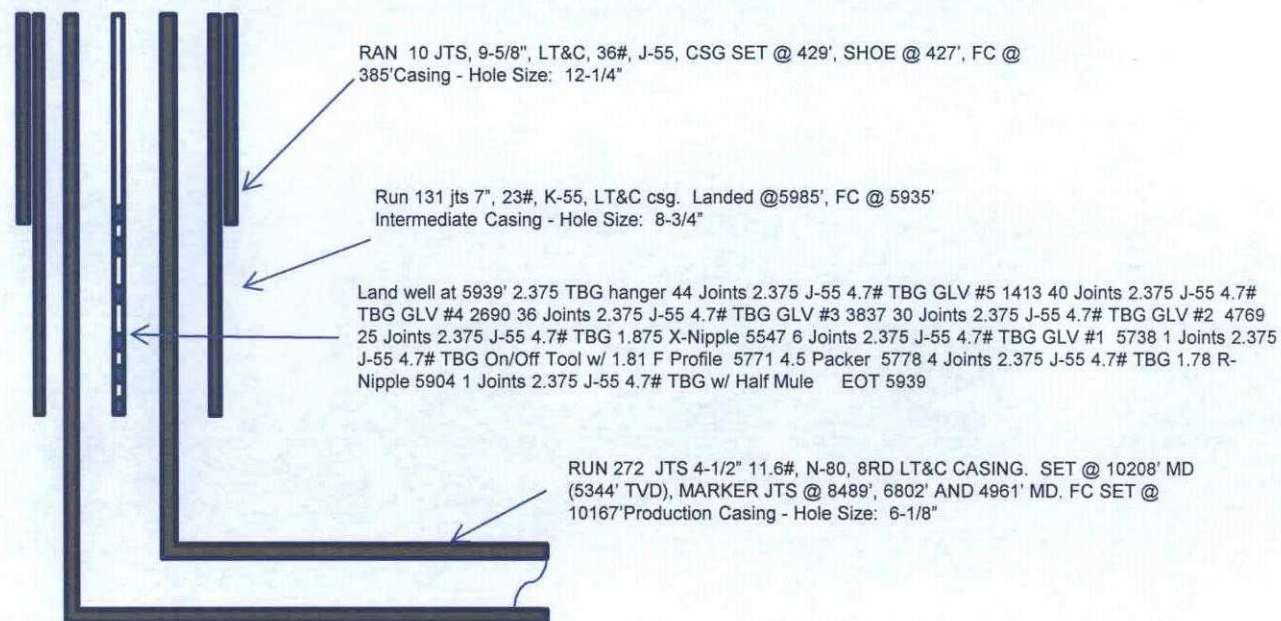
Tubing/GL Change-
10/14/15

Surface Location: 1666' FNL & 278' FEL
SE/4 NE/4 Section 2 (H), T22N, R6W

BHL: 592' FNL & 280' FWL
NW/4 NW/4 Section 2 (D), T22N, R 6W

SANDOVAL Co., NM
Elevation: 6949' GR
API: 30-043-21149

<i>Tops</i>	<i>MD</i>	<i>TVD</i>
Ojo Alamo	1325'	1316'
Kirtland	1619'	1595'
Pictured Cliffs	1892'	1849'
Lewis	2015'	1962'
Chacra	2354'	2275'
Cliff House	3553'	3385'
Menefee	3588'	3417'
Point Lookout	4332'	4114'
Mancos	4524'	4302'
Gallup	4910'	4686'



TD: 10219' MD
TVD: 5344'
PBD: 10167' MD

HOLE SIZE	CASING	CEMENT	VOLUME	CMT TOP
12-1/4"	9-5/8"	256 sx	299 cu.ft.	Surface
8-3/4"	7"	940 sx	1297 cu. ft.	Surface
6-1/8"	4-1/2"	460 sx	669 cu. ft.	1370' TOC