

# NW Lybrook UT # 132H Lybrook Unit NW HZ(OIL)

(page 1)

Spud: 5/26/15

Completed: 7/31/15

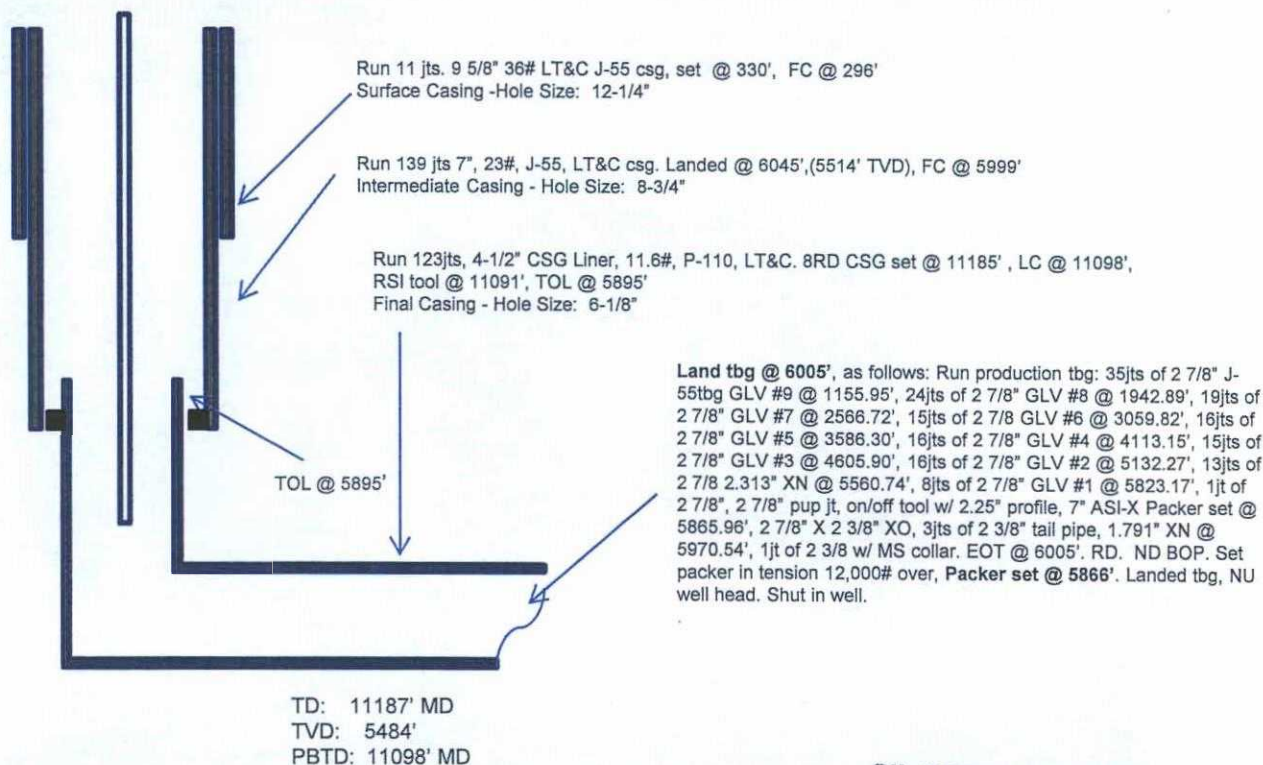
**CONFIDENTIAL**

SHL: 1910' FNL & 1569' FWL  
SE/4 NW/4 Section 36(F), T24N, R8W

BHL: 2146' FNL & 230' FWL  
SW/4 NW/4 Section 35 (E), T24N, R 8W

San Juan ,NM  
Elevation: 6871'  
API: 30-045-35625

Tops	MD	TVD
OJO_ALAMO	1213	1204
KIRTLAND	1338	1325
PICTURE_CLIFFS	1879	1847
LEWIS	2050	2012
CHACRA	2313	2266
CLIFF_HOUSE	3414	3334
MENEFEE	3467	3385
PT_LOOKOUT	4305	4196
MANCOS	4547	4430
GALLUP	4913	4787



OIL CONS. DIV DIST. 3

AUG 07 2015

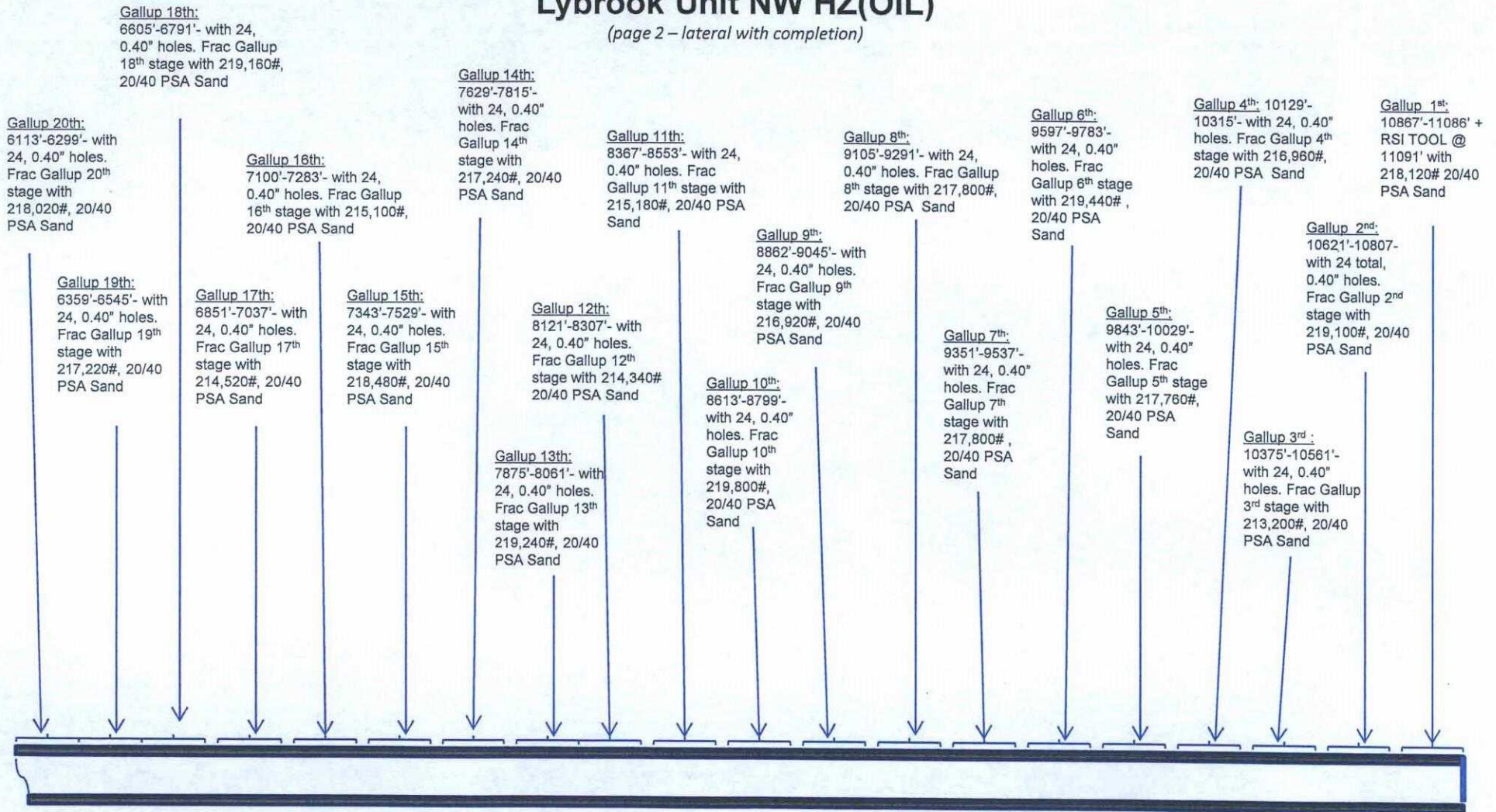
HOLE SIZE	CASING	CEMENT	VOLUME	CMT TOP
12-1/4"	9-5/8"	10lsx	163cu.ft.	Surface
8-3/4"	7"	1142sx	1636cu. ft.	Surface
6-1/8"	4-1/2"	520sx	707cu. ft.	TOL 5895'

Mj 1/29/15

PV

# NW Lybrook UT # 132H Lybrook Unit NW HZ(OIL)

(page 2 – lateral with completion)



See page 1 for upper portion of hole