

UNITED STATES
DEPARTMENT OF THE INTERIOR
BUREAU OF LAND MANAGEMENTRECEIVED
ELECTRONIC REPORT

NOV 11 2015

FORM APPROVED
OMB NO. 1004-0135
Expires: July 31, 2010**SUNDRY NOTICES AND REPORTS ON WELLS**
Do not use this form for proposals to drill or to re-enter an abandoned well. Use form 3160-3 (APD) for such proposals.**SUBMIT IN TRIPLICATE - Other instructions on reverse side.**

1. Type of Well <input checked="" type="checkbox"/> Oil Well <input type="checkbox"/> Gas Well <input type="checkbox"/> Other		5. Lease Serial No. 751141038
2. Name of Operator BRIDGECREEK RESOURCES COLO LLC Contact: CHRISTINE CAMPBELL Email: ccampbell@bridgecreekresources.com		6. If Indian, Allottee or Tribe Name UTE MOUNTAIN UTE
3a. Address 405 URBAN STREET, SUITE 400 LAKEWOOD, CO 80228	3b. Phone No. (include area code) Ph: 303-945-2642	7. If Unit or CA/Agreement, Name and/or No.
4. Location of Well (Footage, Sec., T., R., M., or Survey Description) Sec 34 T31N R15W SENW 2128FNL 2060FWL 36.858868 N Lat, 108.406705 W Lon		8. Well Name and No. KINGSNAKE 34-6
		9. API Well No. 30-045-09999-00-X4 35735
		10. Field and Pool, or Exploratory VERDE GALLUP
		11. County or Parish, and State SAN JUAN COUNTY, NM

12. CHECK APPROPRIATE BOX(ES) TO INDICATE NATURE OF NOTICE, REPORT, OR OTHER DATA

TYPE OF SUBMISSION	TYPE OF ACTION			
<input checked="" type="checkbox"/> Notice of Intent	<input type="checkbox"/> Acidize	<input type="checkbox"/> Deepen	<input type="checkbox"/> Production (Start/Resume)	<input type="checkbox"/> Water Shut-Off
<input type="checkbox"/> Subsequent Report	<input type="checkbox"/> Alter Casing	<input type="checkbox"/> Fracture Treat	<input type="checkbox"/> Reclamation	<input type="checkbox"/> Well Integrity
<input type="checkbox"/> Final Abandonment Notice	<input type="checkbox"/> Casing Repair	<input type="checkbox"/> New Construction	<input type="checkbox"/> Recomplete	<input checked="" type="checkbox"/> Other
	<input type="checkbox"/> Change Plans	<input type="checkbox"/> Plug and Abandon	<input type="checkbox"/> Temporarily Abandon	Onshore Order Variance
	<input type="checkbox"/> Convert to Injection	<input type="checkbox"/> Plug Back	<input type="checkbox"/> Water Disposal	

13. Describe Proposed or Completed Operation (clearly state all pertinent details, including estimated starting date of any proposed work and approximate duration thereof. If the proposal is to deepen directionally or recomple horizontally, give subsurface locations and measured and true vertical depths of all pertinent markers and zones. Attach the Bond under which the work will be performed or provide the Bond No. on file with BLM/BIA. Required subsequent reports shall be filed within 30 days following completion of the involved operations. If the operation results in a multiple completion or recompletion in a new interval, a Form 3160-4 shall be filed once testing has been completed. Final Abandonment Notices shall be filed only after all requirements, including reclamation, have been completed, and the operator has determined that the site is ready for final inspection.)

Bridgecreek Resources is requesting a variance to Onshore Order #2 in regards to the 3M system requiring a double ram preventer.

Due to low BHP's in the area Bridgecreek is proposing to utilize a 2M BOP with a single blind ram (diagram attached) instead of the permitted 3M double ram.

The actual BHL pressure on our two existing wells is 146#-Prairie Falcon 19-1, and 55#-Harris Hawk 20-1 and I have attached the most recent analysis.

The max calculated surface pressures are 884 psi (based off our drilling plan) but also in looking at the producing wells in and around the field the most pressure we have actually seen is ~ 130 psi (based off 300 ft fluid levels above the pump intake....300 ft x 8.33 ppg column of fluid x 0.052 =

OIL CONS. DIV DIST. 3

NOV 20 2015

14. I hereby certify that the foregoing is true and correct. Electronic Submission #323322 verified by the BLM Well Information System For BRIDGECREEK RESOURCES COLO LLC, sent to the Durango Committed to AFMSS for processing by TRACEY AYZE on 11/12/2015 (16TA0124SE)	
Name (Printed/Typed) CHRISTINE CAMPBELL	Title REGULATORY LEAD
Signature (Electronic Submission)	Date 11/11/2015

THIS SPACE FOR FEDERAL OR STATE OFFICE USE

Approved By 	Title MSC	Date 11/16/15
Conditions of approval, if any, are attached. Approval of this notice does not warrant or certify that the applicant holds legal or equitable title to those rights in the subject lease which would entitle the applicant to conduct operations thereon.		Office TRES RIOS FIELD OFFICE

Title 18 U.S.C. Section 1001 and Title 43 U.S.C. Section 1212, make it a crime for any person knowingly and willfully to make to any department or agency of the United States any false, fictitious or fraudulent statements or representations as to any matter within its jurisdiction.

** BLM REVISED ** BLM REVISED ** BLM REVISED ** BLM REVISED ** BLM REVISED **

NMOC

Additional data for EC transaction #323322 that would not fit on the form

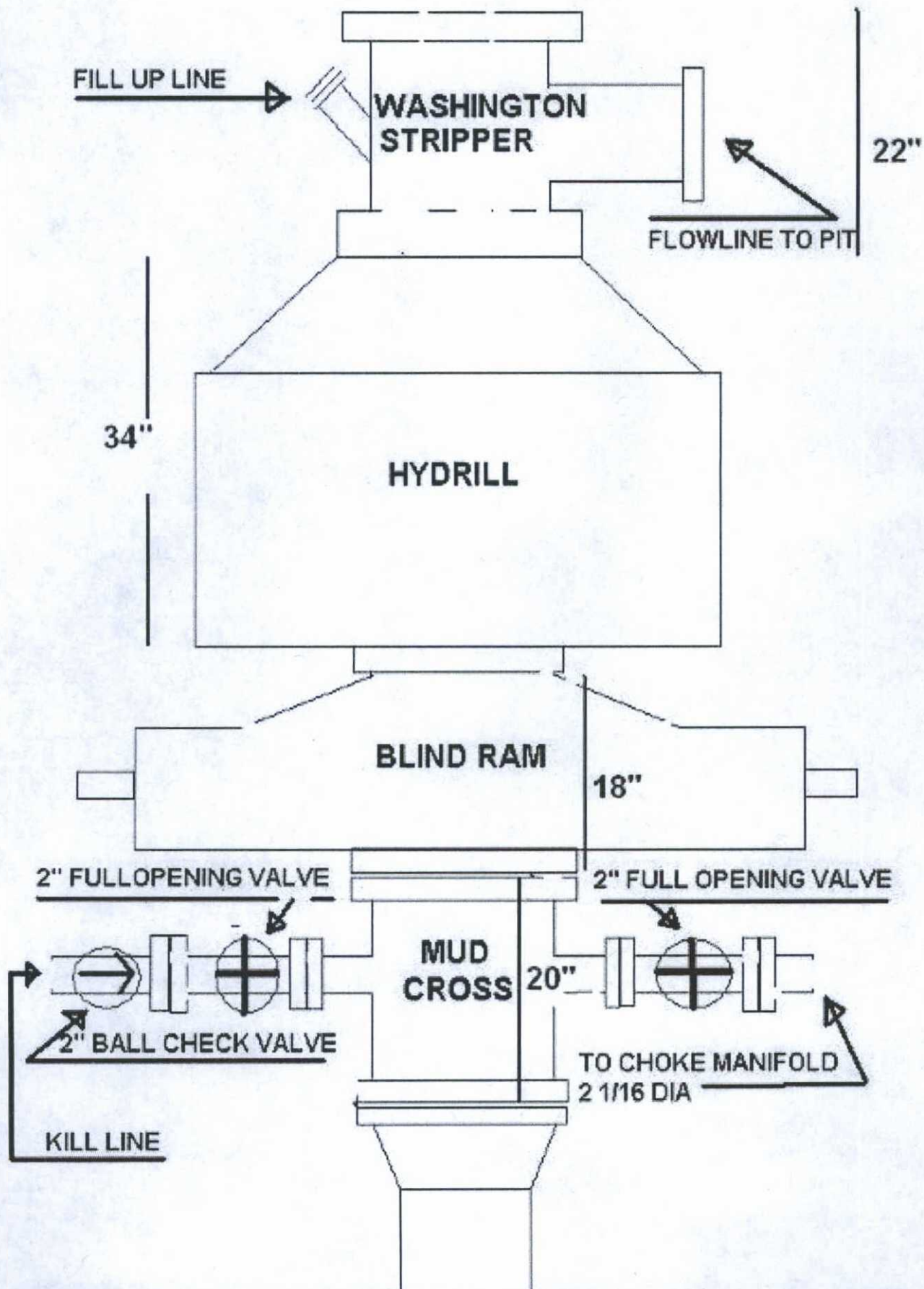
32. Additional remarks, continued

129.9 psi).

Aztec Drilling Rig #507 spud this well on 11/7/15 at 2:00am.
This well TD'd today, 11/11/15.

Received verbal approval to proceed with 3M single ram & 3M hydrill by Jon Pecor (BLM-Tres Rios).

92" overall height



WALSH ENGINEERING FLUID SHOTS

August 11, 2015

Bridgecreek

Harris Hawk 20-1

Summary:

Shot an acoustic trace (fluid level).

Determined fluid level is at 3122 ft, with the pump intake set at 3297 ft.

Estimated total gaseous liquid column above the pump intake to be 175 ft.

Thank you,
Jason Chesnut
Walsh Engineering
Fluid Shots
505-320-7087
fluidshots@walsheng.net

General

Well ID - * -
Well HARRIS HAWK 20 # 1
Company BRIDGECREEK RESOURCES LLC
Operator - * -
Lease Name - * -
Elevation 0.00 ft
Production Method Rod Pump

Comment
PERF 2151 top

Surface Unit

Manufacturer - * -
Unit Class Conventional
Unit API Number - * -
Measured Stroke Length 87.694 in
Rotation CW
Counter Balance Effect (Weights Level) - * - Klb
Weight Of Counter Weights 2000 lb

Prime Mover

Motor Type Electric
Rated HP - * - HP
Run Time 24 hr/day
MFG/Comment - * -

Electric Motor Parameters

Rated Full Load AMPS - * -
Rated Full Load RPM - * -
Synchronous RPM 1200
Voltage - * -
Hertz 60
Phase 3
Power Consumption 5
Power Demand 8 \$/KW

Tubulars

Tubing OD 2.875 in
Casing OD 5.500 in
Average Joint Length 31.700 ft
Anchor Depth - * - ft
Kelly Bushing 12.00 ft

Pump

Plunger Diameter 1.250 in
Pump Intake Depth 3297.00 ft

Polished Rod

Polished Rod Diameter 1.250 in

Rod String

	Top Taper	Taper 2	Taper 3	Taper 4	Taper 5	Taper 6
Rod Type	D	D	KD	- * -	- * -	- * -
Rod Length	1875.00	1250.00	150.00	- * -	- * -	- * - ft
Rod Diameter	0.750	0.750	1.250	- * -	- * -	- * - in
Rod Weight	3044.0	2029.3	679.1	0.0	0.0	0.0 lb

Total Rod Length 3275
Total Rod Weight 5752.43

Damp Up 0.03298
Damp Down 0.03298

Conditions

Pressure

Static BHP - * - psi (g)
Static BHP Method - * -
Static BHP Date - * -

Producing BHP 55.2 psi (g)
Producing BHP Method Acoustic
Producing BHP Date 08/11/2015
Formation Depth 3255.00 ft

Surface Producing Pressures

Tubing Pressure - * - psi (g)
Casing Pressure 27.6 psi (g)

Casing Pressure Buildup

Change in Pressure 0.7 psi
Over Change in Time 1.00 min

Production

Oil Production - * - BBL/D
Water Production - * - BBL/D
Gas Production - * - Mscf/D
Production Date - * -

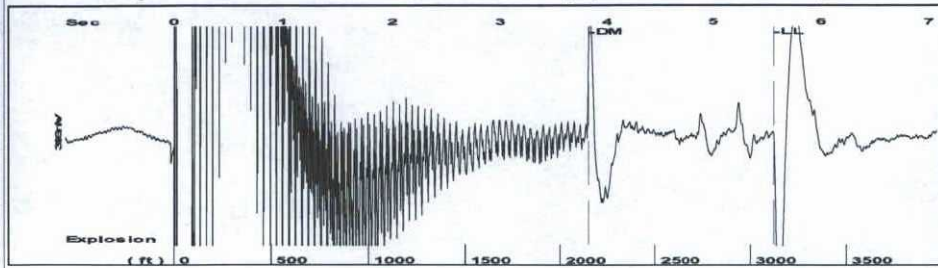
Temperatures

Surface Temperature 70 deg F
Bottomhole Temperature 150 deg F

Fluid Properties

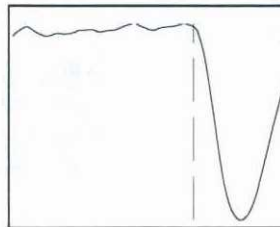
Oil API 40 deg API
Water Specific Gravity 1.05 Sp.Gr.H2O

Group: BRIDGECREEK Well: HARRIS HAWK 20 # 1 (acquired on: 08/11/15 14:16:39)



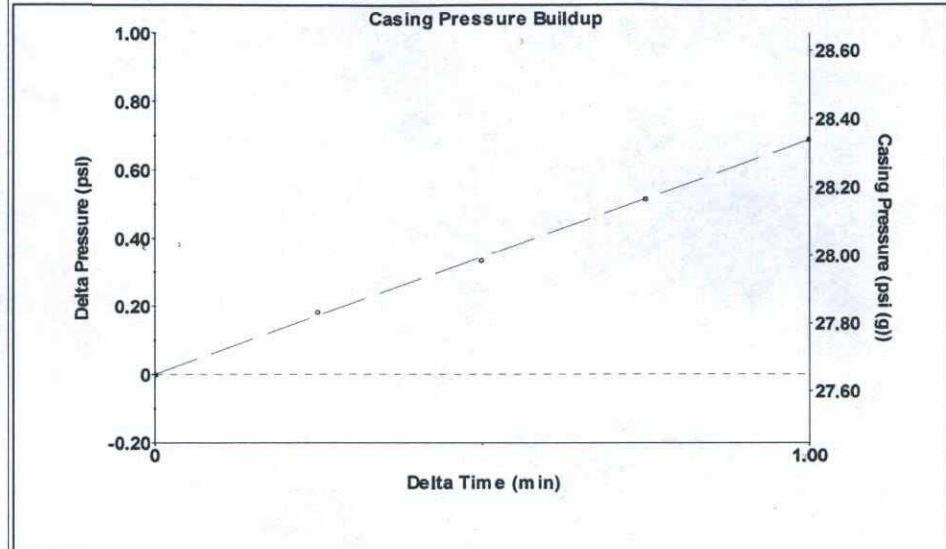
Time 5.563 sec
Joints 98.4808 Jts
Depth 3121.84 ft

Liquid Level Extrapolated from
Marker Selection of a Downhole Marker.



Analysis Method: Down Hole Marker

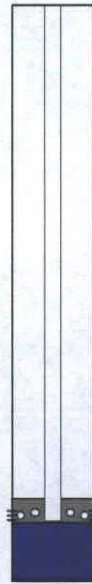
Group: BRIDGECREEK Well: HARRIS HAWK 20 # 1 (acquired on: 08/11/15 14:16:39)



Change in Pressure 0.69 psi PT 9844
Change in Time 1.00 min Range 0 - ? psi

Group: BRIDGECREEK Well: HARRIS HAWK 20 # 1 (acquired on: 08/11/15 14:16:39)

Production	Potential	Casing Pressure	Producing
Current		27.6 psi (g)	
Oil - * -	- * - BBL/D	Casing Pressure Buildup	Annular
Water - * -	- * - BBL/D	0.7 psi	Gas Flow
Gas - * -	- * - Mscf/D	1.00 min	17 Mscf/D
IPR Method	Vogel	Gas/Liquid Interface Pressure	% Liquid
PBHP/SBHP	- * -	31.7 psi (g)	52 %
Production Efficiency	0.0	Liquid Level Depth	
Oil 40 deg.API		3121.84 ft	
Water 1.05 Sp.Gr.H2O		Pump Intake Depth	
Gas 0.87 Sp.Gr.AIR		3297.00 ft	
Acoustic Velocity	1122.36 ft/s	Formation Depth	
		3255.00 ft	
Formation Submergence			Pump Intake
Total Gaseous Liquid Column HT (TVD)	175 ft		69.4 psi (g)
Equivalent Gas Free Liquid HT (TVD)	111 ft		Producing BHP
			55.2 psi (g)
Acoustic Test			Static BHP
			- * - psi (g)



WALSH ENGINEERING FLUID SHOTS

August 11, 2015

Bridgecreek

Prairie Falcon 19-1

Summary:

Shot an acoustic trace (fluid level).

Determined fluid level is at 2514 ft, with the pump intake set at 2974 ft.
Estimated total gaseous liquid column above the pump intake to be 461 ft.

Thank you,
Jason Chesnut
Walsh Engineering
Fluid Shots
505-320-7087
fluidshots@walsheng.net

General

Well ID - * -
Well PRAIRIE FALCON 19-1
Company BRIDGECREEK RESOURCES LLC
Operator - * -
Lease Name - * -
Elevation 0.00 ft
Production Method Rod Pump

Comment
TOP PERF 2445
BOT PERF 2953

Surface Unit

Manufacturer - * -
Unit Class Conventional
Unit API Number - * -
Measured Stroke Length 65.512 in
Rotation CW
Counter Balance Effect (Weights Level) - * - Klb
Weight Of Counter Weights 2000 lb

Prime Mover

Motor Type Electric
Rated HP - * - HP
Run Time 24 hr/day
MFG/Comment - * -

Electric Motor Parameters

Rated Full Load AMPS - * -
Rated Full Load RPM - * -
Synchronous RPM 1200
Voltage - * -
Hertz 60
Phase 3
Power Consumption 5
Power Demand 8 \$/KW

Tubulars

Tubing OD 2.375 in
Casing OD 4.500 in
Average Joint Length 31.700 ft
Anchor Depth - * - ft
Kelly Bushing 12.00 ft

Pump

Plunger Diameter 1.750 in
Pump Intake Depth 2974.00 ft

Polished Rod

Polished Rod Diameter 1.250 in

Rod String

	Top Taper	Taper 2	Taper 3	Taper 4	Taper 5	Taper 6
Rod Type	D	D	KD	- * -	- * -	- * -
Rod Length	14.00	2775.00	150.00	- * -	- * -	- * - ft
Rod Diameter	0.750	0.750	1.250	- * -	- * -	- * - in
Rod Weight	22.7	4505.1	679.1	0.0	0.0	0.0 lb

Total Rod Length 2939
Total Rod Weight 5206.95

Damp Up 0.02974
Damp Down 0.02974

Conditions

Pressure

Static BHP - * - psi (g)
Static BHP Method - * -
Static BHP Date - * -

Producing BHP 146.7 psi (g)
Producing BHP Method Acoustic
Producing BHP Date 08/11/2015
Formation Depth 2953.00 ft

Surface Producing Pressures

Tubing Pressure - * - psi (g)
Casing Pressure 35.4 psi (g)

Casing Pressure Buildup

Change in Pressure 0.4 psi
Over Change in Time 1.00 min

Production

Oil Production - * - BBL/D
Water Production - * - BBL/D
Gas Production - * - Mscf/D
Production Date - * -

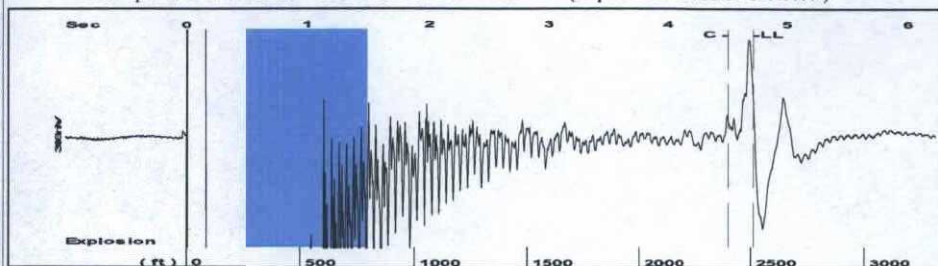
Temperatures

Surface Temperature 70 deg F
Bottomhole Temperature 150 deg F

Fluid Properties

Oil API 40 deg API
Water Specific Gravity 1.05 Sp.Gr.H2O

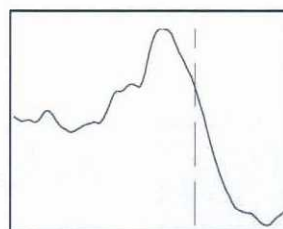
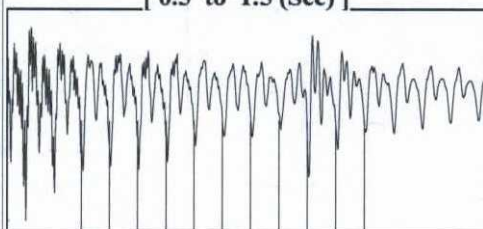
Group: BRIDGECREEK Well: PRAIRIE FALCON 19-1 (acquired on: 08/11/15 13:43:07)



Filter Type High Pass Automatic Collar Count Yes
Manual Acoustic Vel 1070.95 ft/s Manual JTS/sec 16.8919

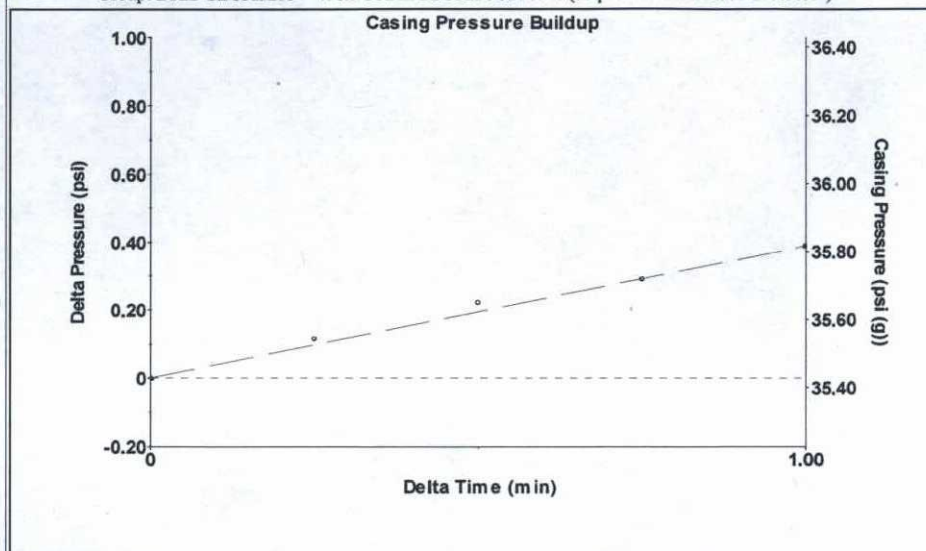
Time 4.72 sec
Joints 79.2621 Jts
Depth 2512.61 ft

[0.5 to 1.5 (Sec)]



Analysis Method: Automatic

Group: BRIDGECREEK Well: PRAIRIE FALCON 19-1 (acquired on: 08/11/15 13:43:07)



Change in Pressure 0.39 psi PT 9844
Change in Time 1.00 min Range 0 - ? psi

Group: BRIDGECREEK Well: PRAIRIE FALCON 19-1 (acquired on: 08/11/15 13:43:07)

Production
Current
Oil - * -
Water - * -
Gas - * -

IPR Method Vogel
PBHP/SBHP - * -
Production Efficiency 0.0

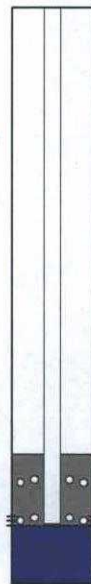
Oil 40 deg.API
Water 1.05 Sp.Gr.H2O
Gas 0.92 Sp.Gr.AIR

Acoustic Velocity 1064.66 ft/s

Formation Submergence
Total Gaseous Liquid Column HT (TVD) 461 ft
Equivalent Gas Free Liquid HT (TVD) 336 ft

Acoustic Test

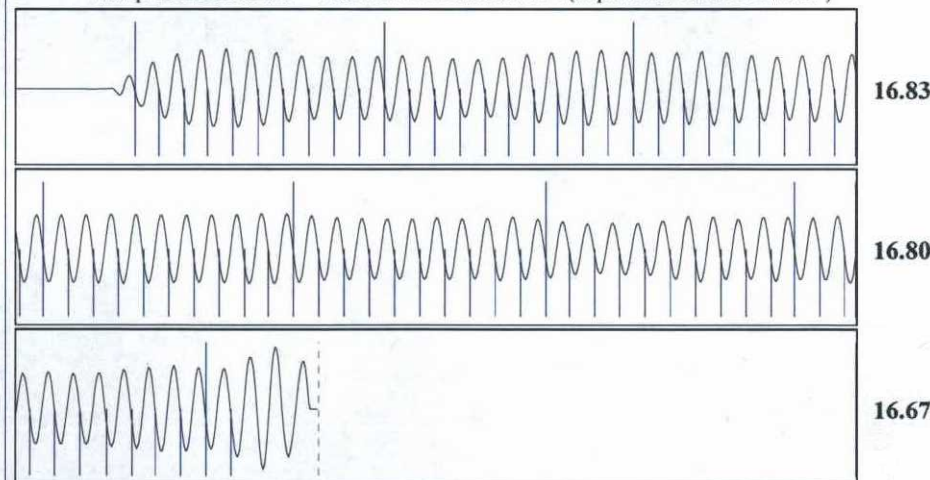
Casing Pressure 35.4 psi (g)
Casing Pressure Buildup 0.4 psi
1.00 min
Gas/Liquid Interface Pressure 39.5 psi (g)
Liquid Level Depth 2512.61 ft
Pump Intake Depth 2974.00 ft
Formation Depth 2953.00 ft



Producing
Annular Gas Flow 5 Mscf/D
% Liquid 71 %

Pump Intake 153.8 psi (g)
Producing BHP 146.7 psi (g)
Static BHP - * - psi (g)

Group: BRIDGECREEK Well: PRAIRIE FALCON 19-1 (acquired on: 08/11/15 13:43:07)



Acoustic Velocity 1064.66 ft/s Joints counted 71
Joints Per Second 16.7928 jts/sec Joints to liquid level 79.2621
Depth to liquid level 2512.61 ft Filter Width 14.8919 18.8919
Automatic Collar Count Yes Time to 1st Collar 0.284 4.512