

API 30-045-11681

OIL CONS. DIV DIST. 3

DEC 18 2015

**Gallegos Canyon Unit 241**

Pictured Cliffs
API # 30-045-11687
T-28N, R-12-W, Sec. 29
San Juan County, New Mexico

Well History:

4/9/66: Spud date
5/22/66: Dakota Completion date
9/21/92: Bradenhead repair. Tested casing. Perf'd at 700'. Squeezed.
Pressure tested at 500#. Ran CBL 1000' to surface.
Pushed and drilled bridge plug to 5998'
1/14/1998: Completed Pictured Cliffs.
8/4/98: Well Servicing: Installed pump and rods.
4/6/2000: Well Servicing
1/8/2003: Pulled pump and rods. Found bad pump. Tagged fill at 1520'.
Found rod wear on bottom 5 jts of tubing. Replaced joints.
Land tubing at 1366'. Ran pump and rods w/ guides.
1/6/2004: Bad pump, tubing okay. Replaced pump.
2" x 1.25" x 9'
5/14/04: Found hole in bottom joint of tubing. Full string was
rod cut. Ran new yellow band tubing string.

Pictured Cliffs Perforations

1312-1328'
Frac'd w/ 51,500# 16/30 Ottawa Sand

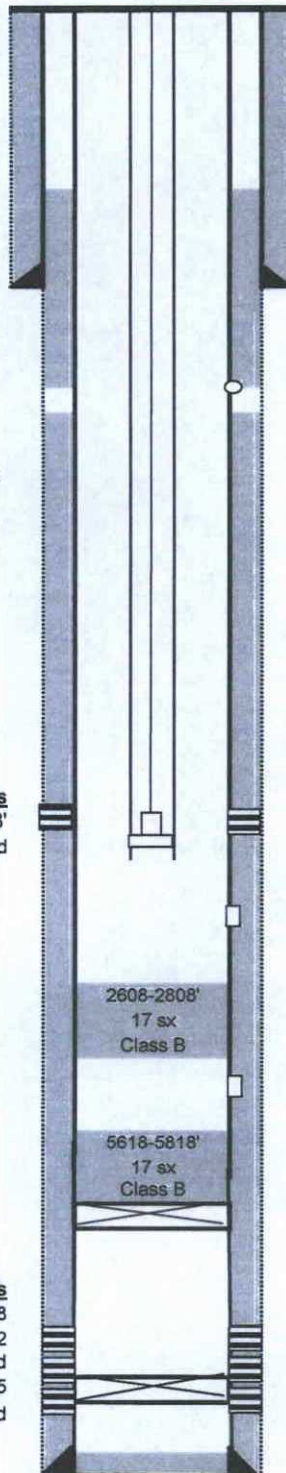
Formation Tops

Pictured Cliffs	1302
Lewis Shale	1518
Mesaverde	2835
Mancos	4065
Gallup	4941
Base Gallup	5540
Greenhorn	5755
Graneros Shale	5818
Graneros Dakota	5868
Main Dakota	5920

Dakota Perforations

	5868-5874	5892-5898
5926-5934	5951-5957	5966-5972

Frac'd w/ 50,896 gals wtr, 40,000# 20/40 sand, 10,000# 10/20 sand
6000-6015
Frac'd w/ 500 gals acid, 27,380 gals wtr, 20,000# 20/40 sand



RDB 5634'

TOC: unknown

12 1/4" Hole
8 5/8", 24# @ 330'
Cmt w/ 213 sx

TOC: 200' (CBL 1998)

Squeezed @ 700'

Tubing Detail: (2004)

Tubing hanger
43 jts 2 3/8" tubing (1341.52')
profile nipple (1.78" ID)
16' 2 3/8" Muleshoe
Landed at 1369.5'

2 3/8" tubing at 1369.5'

Rod Detail: (2004)

16' 1.25" polished rod
4', 0.75" pony rod
2', 0.75" pony rod
1325', 0.75" Grade D Guided Rods
2" x 1.25" x 9' RHAC pump

Stage Tool @ 1498'

Stage Tool @ 4094'

CIBP at 5818'

Bridge Plug at 5998'

7 7/8" hole
4 1/2" 10.5# @ 6076'
Cmt 1st stage: 500 sx Class C.
Cmt 2nd stage: 550 sx Class C
Cmt 3rd stage: 375 sx Class C

PBTD: 2608'
TD: 6076'