

District I  
1625 N. French Dr., Hobbs, NM 88240  
District II  
811 S. First St., Artesia, NM 88210  
District III  
1000 Rio Brazos Road, Aztec, NM 87410  
District IV  
1220 S. St. Francis Dr., Santa Fe, NM 87505

State of New Mexico  
Energy Minerals and Natural Resources

NOV 19 2015

Form C-141  
Revised August 8, 2011

Oil Conservation Division  
1220 South St. Francis Dr.  
Santa Fe, NM 87505

Submit 1 Copy to appropriate District Office in  
accordance with 19.15.29 NMAC.

## Release Notification and Corrective Action

## OPERATOR

☒ Initial Report ☐ Final Report

Name of Company WPX Energy Production	Contact Deborah Watson
Address PO Box 640 Aztec, NM 87410	Telephone No. 505-386-9693
Facility Name NE Chaco Com 166H CDP Pipeline	Facility Type Pipeline
Surface Owner BLM/State of NM	Mineral Owner BLM/State of NM
API No. N/A 30-039-31202	

## LOCATION OF RELEASE

Unit Letter	Section	Township	Range	Feet from the	North/South Line	Feet from the	East/West Line	County
A	17	23N	07W	223	South	498	East	Rio Arriba

Latitude 36.231448 Longitude -107.590197

## NATURE OF RELEASE

Type of Release Crude Oil	Volume of Release 22.7 bbls	Volume Recovered 0 bbls
Source of Release Produced Water Pipeline/Water Can	Date and Hour of Occurrence 11/04/15, unknown	Date and Hour of Discovery 11/04/15, approximately 13:15
Was Immediate Notice Given? <input checked="" type="checkbox"/> Yes <input type="checkbox"/> No <input type="checkbox"/> Not Required	If YES, To Whom? Katherina Diemer, BLM-FFO Cory Smith, NMOCD	
By Whom? Deborah Watson	Date and Hour 11/04/15 approximately 13:30	
Was a Watercourse Reached? <input type="checkbox"/> Yes <input checked="" type="checkbox"/> No	If YES, Volume Impacting the Watercourse.	

If a Watercourse was Impacted, Describe Fully.\*  
An unnamed drainage was impacted.

Describe Cause of Problem and Remedial Action Taken.\*

As a result of a mistake which occurred during construction of the NE Chaco Com 166H CDP facility, crude oil flowed from the NE Chaco Com 166H CDP within the produced water pipeline until it exited the pipeline at the NE Chaco Com 163H water can.

## Immediate Actions Included:

- Installation of oil absorbent pads and booms in strategic places along the release path.
- Hand shoveling of impacted soil into sand bags and disposal of impacted material at the landfarm the same day.
- Spec truck brought in to empty water can of crude oil.
- Hydrovac truck brought to remove additional free standing crude oil.

Additional actions are described in attached remediation plan.

Describe Area Affected and Cleanup Action Taken.\*

From the water can, the crude oil flowed north then east, approximately 1,070 feet.

- Cleanup in progress. See attached remediation plan.

I hereby certify that the information given above is true and complete to the best of my knowledge and understand that pursuant to NMOCD rules and regulations all operators are required to report and/or file certain release notifications and perform corrective actions for releases which may endanger public health or the environment. The acceptance of a C-141 report by the NMOCD marked as "Final Report" does not relieve the operator of liability should their operations have failed to adequately investigate and remediate contamination that pose a threat to ground water, surface water, human health or the environment. In addition, NMOCD acceptance of a C-141 report does not relieve the operator of responsibility for compliance with any other federal, state, or local laws and/or regulations.

Signature: <i>Deborah Watson</i>	OIL CONSERVATION DIVISION	
Printed Name: Deborah Watson	Approved by Environmental Specialist: <i>[Signature]</i>	
Title: Environmental Specialist	Approval Date: 12/2/15	Expiration Date:
E-mail Address: deborah.watson@wpxenergy.com	Conditions of Approval:	Attached <input type="checkbox"/>
Date: 11/18/2015	Phone: 505-386-9693	

\* Attach Additional Sheets If Necessary NCS 15 34130251

November 10, 2015

Cory Smith  
New Mexico Oil Conservation Division  
1000 Rio Brazos Road  
Aztec, New Mexico 87410

**RE: Remediation Plan  
NE Chaco Com 166H CDP Pipeline Release  
N36.231448, W107.590197**

Dear Mr. Smith,

On November 4, 2015, a release of approximately 23 barrels of crude oil occurred along the 2-5 pipeline just north of the NE Chaco Com 163H/275H well pad. As a result of a mistake which occurred during construction of the NE Chaco Com 166H CDP facility, crude oil flowed from the NE Chaco Com 166H CDP within the produced water pipeline until it exited the pipeline at the NE Chaco Com 163H water can. From the water can, the crude oil flowed north then east, approximately 1,070 feet. The release point is located in Section 17, Township 23N, Range 7W, Rio Arriba County, New Mexico. A topographic map depicting the location is included as Figure 1, and an aerial site map is included as Figure 2.

#### **Notification**

On November 4, 2015, WPX contacted Ms. Katherina Diemer, Bureau of Land Management Farmington Field Office (BLM-FFO), and Mr. Cory Smith, New Mexico Oil Conservation Division (NMOCD), at approximately 13:30 following discovery of the crude oil release. At the time of notification, WPX requested to begin cleanup immediately based on release location and impending inclement weather. WPX received verbal approval from BLM-FFO and NMOCD to proceed.

#### **Remediation**

On November 4, 2015, following notification to BLM-FFO and NMOCD, crews were dispatched to the location to install oil absorbent pads and booms in strategic locations along the release path to prevent further migration of the release. Crews then began shoveling crude oil and impacted soils into sand bags. Impacted soils from within the impacted area collected were disposed of at Envirotech landfarm later that evening. A spec truck was dispatched to the location and the water can was emptied of crude oil. A hydrovac truck was called to the location to remove crude oil from within the access road culvert and crude oil. Additional absorbent booms and pads were installed within the release path.

On November 5, 2015, while Ms. Diemer (BLM-FFO) was on location, a small catch basin was installed west of the access road to catch potential run-off from melting snow. Spent booms and pads were removed and additional booms and pads were placed within the release path.

On November 6, 2015, at the direction of NMOCD, construction fencing was installed around the impacted areas of the dry pond and absorbent booms were installed to protect the north culvert.

The following cleanup activities are scheduled at the site. Dates of activities will be based on site conditions:

- Vacuum truck/Spec truck to pull all standing fluids within dry pond, catch basin, and standing product within the unnamed drainage. This will be repeated as needed.
- Saturated absorbent booms and pads will be removed and replaced by new absorbent booms and pads as needed.
- Workers with clean shovels will hand dig any remaining impacted soils from within the unnamed drainage. The soils will be collected in sand bags. Heavy equipment will be brought into to collect sand bags and if needed, excavate soils within open areas.
- Impacted soils will be taken to the landfarm for disposal.
- Impacted sandstone will be power washed and if needed cleaned with Simple Green® All Purpose Cleaner. Liquids associated with sandstone cleaning will be removed by a hydrovac or spec truck.

#### **Disposal Location**

Impacted soils will be disposed of at Envirotech, Inc. Soil Remediation Facility, Permit #NM 01-0011 located at #43 Road 7175, south of Bloomfield, Hilltop, New Mexico.

Spent absorbent booms and pads will be also be disposed of at Envirotech, Inc. Soil Remediation Facility, Permit #NM 01-0011 located at #43 Road 7175, south of Bloomfield, Hilltop, New Mexico.

#### **Soil Testing**

The release has been assigned a NMOCD ranking of 30, cleanup goals for impacted soil within the release area include: 10 milligrams per kilogram (mg/kg) benzene, 50 mg/kg for total benzene, toluene, ethylbenzene, and total xylenes (BTEX), and 100 mg/kg for total petroleum hydrocarbons (TPH) gasoline range organics (GRO) and diesel range organics (DRO).

Confirmation sampling will consist of the collection of one 5-point composite sample approximately every 200 feet from within the impacted area. Each sample will be laboratory analyzed for the following:

- BTEX per U.S. Environmental Protection Agency (USEPA) Method 8021, and
- TPH (as DRO/GRO) per USEPA Method 8015.

*Remediation Plan  
WPX NE Chaco Com 166H CDP Pipeline Release  
November 10, 2015*

Proposed sample locations are identified in Figure 3. WPX will notify BLM and NMOCD at least 48 hours prior to confirmation soil sampling.

**Clean Soil**

If needed, clean certified weed free soil will be brought in for backfill.

**Prevention**

Post-analysis of the release will begin this week. Findings will be available in the near future.

**Completion Date**

WPX anticipates cleanup to be completed by the end of November. The completion date will depend on site conditions and potential weather delays.

If you have any questions or need additional information, please contact me at 505-386-9693 or 505-333-1880.

Sincerely,



Deborah Watson  
Environmental Specialist

**Attachments:**

- Figure 1. Topographic Map
- Figure 2. Aerial Site Map
- Figure 3. Proposed Soil Sample Location Map



Figure 1. Topographic Map  
NE Chaco Com 166H CDP Pipeline Release  
Section 17, Township 23N, Range 07W  
N36.231448, W107.590197  
Rio Arriba County, NM  
Scale 1:24,000



Figure 2. Aerial Site Map  
NE Chaco Com 166H CDP Pipeline Release  
Section 17, Township 23N, Range 07W  
N36.231448, W107.590197  
Rio Arriba County, NM

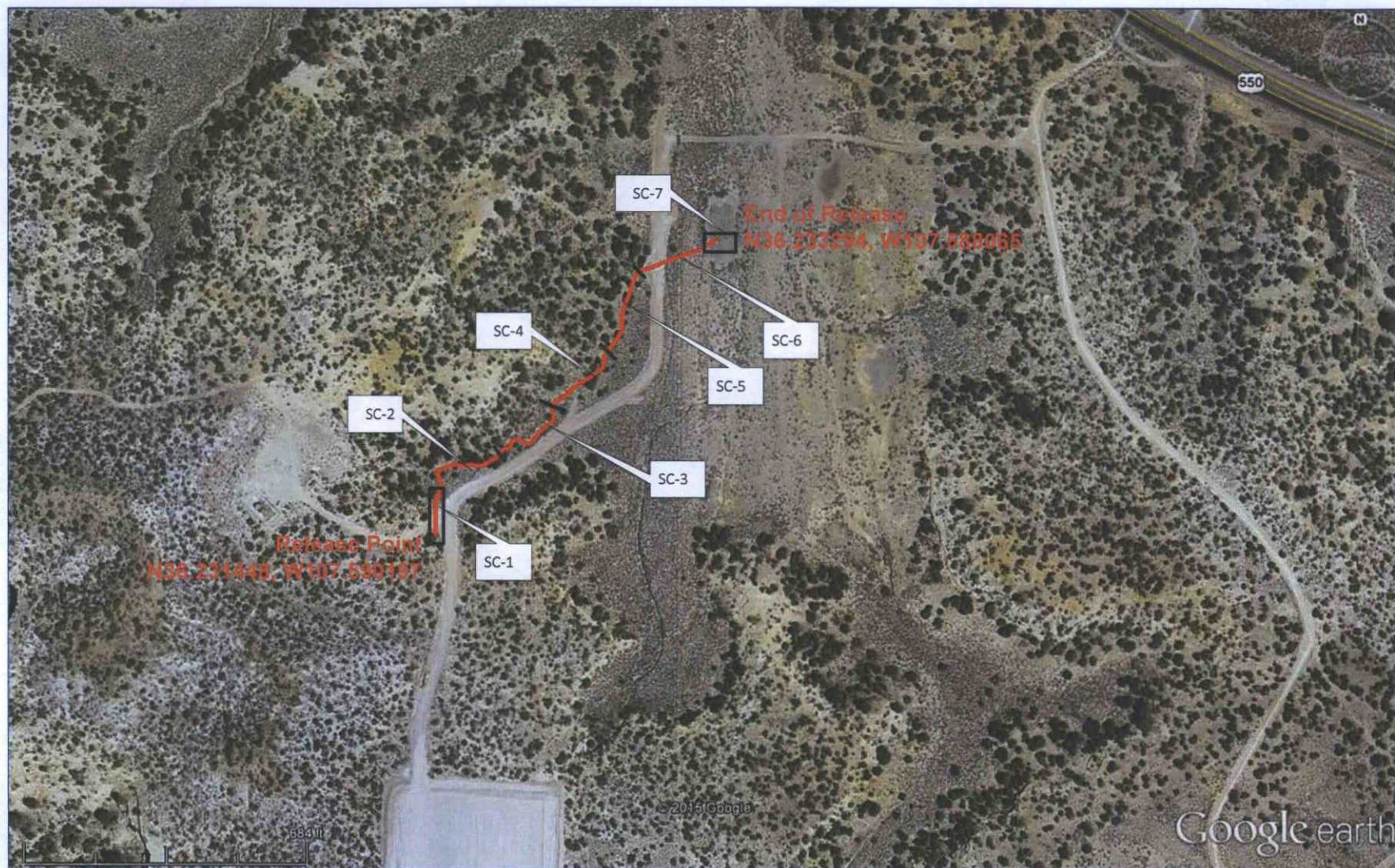


Figure 3. Proposed Soil Sample Locations  
 NE Chaco Com 166H CDP Pipeline Release  
 Section 17, Township 23N, Range 07W  
 N36.231448, W107.590197  
 Rio Arriba County, NM