

UNITED STATES  
DEPARTMENT OF THE INTERIOR  
BUREAU OF LAND MANAGEMENT

SUBMIT IN  
DUPLICATE

(See other instructions on  
reverse side)

FORM APPROVED  
OMB NO. 1004-0137  
Expires: February 28, 1995

WELL COMPLETION OR RECOMPLETION REPORT AND LOG\*

1a. TYPE OF WELL: <input type="checkbox"/> OIL WELL <input checked="" type="checkbox"/> GAS WELL <input type="checkbox"/> DRY <input type="checkbox"/> OTHER <b>AMENDED</b>				5. LEASE DESIGNATION AND LEASE NO. N0-G-0207-1610	
b. TYPE OF COMPLETION: <input checked="" type="checkbox"/> NEW WELL <input type="checkbox"/> WORKOVER <input type="checkbox"/> DEEPEN <input type="checkbox"/> PLUG BACK <input type="checkbox"/> DIFF.RESVR. <input type="checkbox"/> OTHER				6. IF INDIAN ALLOTTEE OR Navajo	
2. NAME OF OPERATOR WPX Energy Production, LLC.				7. UNIT AGREEMENT NAME NMNM 1334828	
3. ADDRESS AND TELEPHONE NO. P.O. Box 640, Aztec, NM 87410 (505) 333-1808				8. FARM OR LEASE NAME, WELL NO. NW Lybrook UT # 132H	
4. LOCATION OF WELL (Report location clearly and in accordance with any State requirements)* SHL: 1910' FNL & 1569' FWL, SEC 36, T24N, R8W BHL: 2146' FNL & 230' FWL SEC 35, T24N R8W				9. API WELL NO. 30-045-35625	
				10. FIELD AND POOL, OR WILDCAT Lybrook Unit NW HZ(oil)	
				11. SEC., T., R., M., OR BLOCK AND SURVEY OR AREA SEC 36 24N 8W	
		14. PERMIT NO.		DATE ISSUED	
15. DATE SPUDDED 05/26/26		16. DATE T.D. REACHED 06/12/15		12. COUNTY OR San Juan	
17. DATE COMPLETED (READY TO PRODUCE) 7/31/15		18. ELEVATIONS (DK, RKB, RT, GR, ETC.)* 6871' GR		13. STATE New Mexico	
20. TOTAL DEPTH, MD & TVD 11187' MD 5484' TVD		21. PLUG, BACK T.D., MD & TVD 11098' MD 5488' TVD		19. ELEVATION CASINGHEAD	
22. IF MULTICOMP., HOW MANY		23. INTERVALS DRILLED BY		ROTARY TOOLS x	
24. PRODUCING INTERVAL(S), OF THIS COMPLETION - TOP, BOTTOM, NAME (MD AND TVD)* Lybrook Unit NW HZ (oil) 6113'-11086' MD		25. WAS DIRECTIONAL SURVEY MADE YES		CABLE TOOLS	
26. TYPE ELECTRIC AND OTHER LOGS RUN		27. WAS WELL CORED No			
28. CASING REPORT (Report all strings set in well)					
CASING SIZE/GRADE		WEIGHT, LB./FT		DEPTH SET (MD)	
9-5/8"		36#, J-55		330' MD	
7"		23#, J-55		6045' MD	
4-1/2"		11.6 #, P-110		5895' - 11185'	
29. LINER RECORD		30. TUBING RECORD			
SIZE		TOP (MD)		BOTTOM (MD)	
4-1/2"		5895'			
31. PERFORATION RECORD (Interval, size, and number) Lybrook Unit NW HZ (oil): 6113'-11086' MD		32. ACID, SHOT, FRACTURE, CEMENT SQUEEZE, ETC. DEPTH INTERVAL (MD) AMOUNT AND KIND OF MATERIAL USED			
GALLUP 20th - 24, 0.40" holes		6113'-6299'		218,020#, 20/40 PSA Sand	
GALLUP 19th - 24, 0.40" holes		6359'-6545'		217,220#, 20/40 PSA Sand	
GALLUP 18th - 24, 0.40" holes		6605'-6791'		219,160#, 20/40 PSA Sand	
GALLUP 17th - 24, 0.40" holes		6851'-7037'		214,520#, 20/40 PSA Sand	
GALLUP 16th - 24, 0.40" holes		7100'-7283'		215,100#, 20/40 PSA Sand	
GALLUP 15th - 24, 0.40" holes		7343'-7529'		218,480#, 20/40 PSA Sand	
GALLUP 14th - 24, 0.40" holes		7629'-7815'		217,240#, 20/40 PSA Sand	
GALLUP 13th - 24, 0.40" holes		7875'-8061'		219,240#, 20/40 PSA Sand	

CONFIDENTIAL

OIL CONS. DIV DIST. 3

DEC 24 2015

NMOC

ACCEPTED FOR RECORD

DEC 17 2015

FARMINGTON FIELD OFFICE  
BY: [Signature]

5



GALLUP 12<sup>th</sup> - 24, 0.40" holes

GALLUP 11<sup>th</sup> - 24, 0.40" holes

GALLUP 10<sup>th</sup> - 24, 0.40" holes

GALLUP 9<sup>th</sup> - 24, 0.40" holes

GALLUP 8<sup>th</sup> - 24, 0.40" holes

GALLUP 7<sup>th</sup> - 24, 0.40" holes

GALLUP 6<sup>th</sup> - 24, 0.40" holes

GALLUP 5<sup>th</sup> - 24, 0.40" holes

GALLUP 4<sup>th</sup> - 24, 0.40" holes

GALLUP 3<sup>rd</sup> - 24, 0.40" holes

GALLUP 2<sup>nd</sup> - 24, 0.40" holes

GALLUP 1<sup>st</sup> - 18, 0.40" holes RSI TOOL @ **11086'**

8121'-8307'	214,340#, 20/40 PSA Sand
8367'-8553'	215,180#, 20/40 PSA Sand
8613'-8799'	219,800#, 20/40 PSA Sand
8862'-9045'	216,920#, 20/40 PSA Sand
9105'-9291'	217,800#, 20/40 PSA Sand
9351'-9537'	217,800#, 20/40 PSA Sand
9597'-9783'	219,440#, 20/40 PSA Sand
9843'-10029'	217,760#, 20/40 PSA Sand
10129'-10315'	216,960#, 20/40 PSA Sand
10375'-10561'	213,200#, 20/40 PSA Sand
10621'-10807'	219,100#, 20/40 PSA Sand
10867'- <b>11086'</b>	218,120# 20/40 PSA Sand

33. PRODUCTION

DATE OF FIRST PRODUCTION		PRODUCTION METHOD (Flowing, gas lift, pumping-size and type of pump)				WELL STATUS (PRODUCING OR SI)	
Will file on delivery sundry							
DATE OF TEST	TESTED	CHOKE SIZE	PROD'N FOR TEST PERIOD 24hrs	OIL - BBL.	GAS - MCF	WATER - BBL.	GAS-OIL RATIO
FLOW TBG PRESS	CASING PRESSURE	CALCULATED 24-HOUR RATE		OIL - BBL.	GAS - MCF	WATER - BBL.	OIL GRAVITY-API (CORR.)

34. DISPOSITION OF GAS (Sold, used for fuel, vented, etc.): non flaring

TEST WITNESSED BY:

35. LIST OF ATTACHMENTS: SUMMARY OF POROUS ZONES, WELLBORE DIAGRAM, Directional EOW report

36. I hereby certify that the foregoing and attached information is complete and correct as determined from all available records

PRINTED NAME LACEY GRANILLO SIGNED

TITLE Permit III

DATE 12/15/15

37. SUMMARY OF POROUS ZONES: (Show all important zones of porosity and contents thereof; cored intervals, and all drill-stem, tests, including depth interval tested, cushion used, time tool open, flowing and shut-in pressures, and recoveries):

38. GEOLOGIC MARKERS

FORMATION	TOP		BOTTOM		DESCRIPTION, CONTENTS, ETC.	NAME	
							NAME
	MD	TVD					
Ojo Alamo	1213	1204					
Kirtland	1338	1325					
Picture Cliffs	1879	1847					
Lewis	2050	2012					
Chacra	2313	2266					
Cliff House	3414	3334					
Menefee	3467	3385					
Point Lookout	4305	4196					
Mancos	4547	4430					
Gallup	4913	4787					



# NW Lybrook UT # 132H

## Lybrook Unit NW HZ(OIL)

(page 1)

Spud: 5/26/15

Completed: 7/31/15

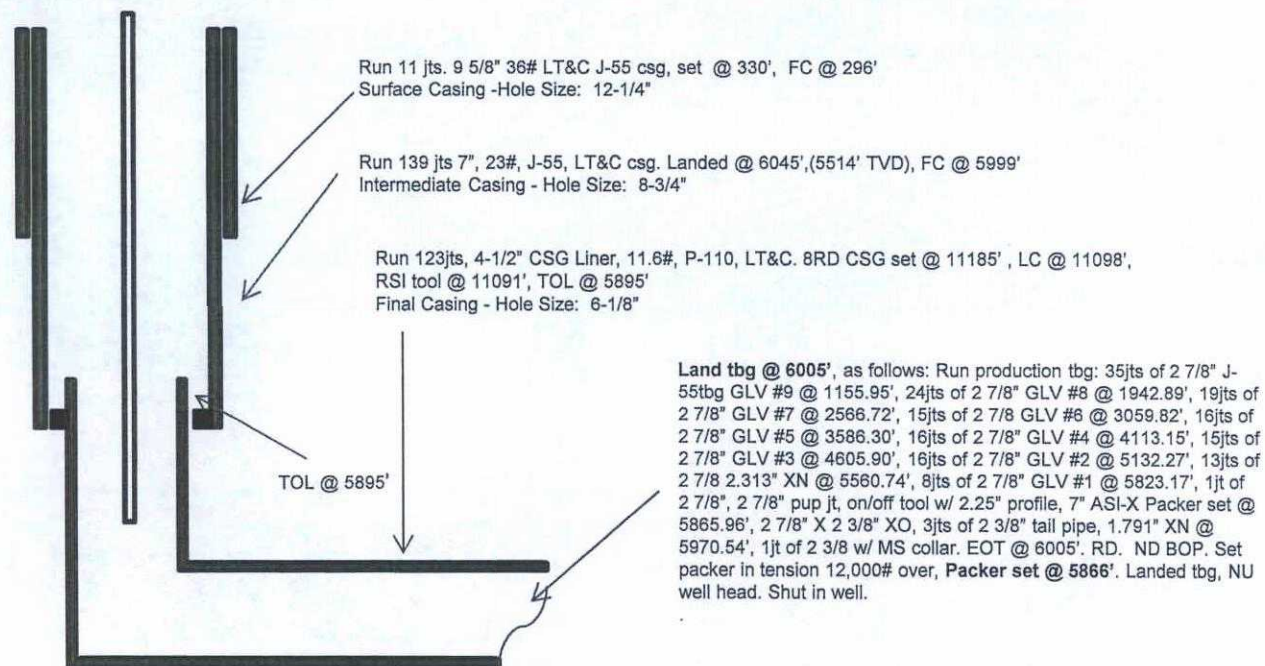
AMENDED RSI-  
12/15/15

SHL: 1910' FNL & 1569' FWL  
SE/4 NW/4 Section 36(F), T24N, R8W

BHL: 2146' FNL & 230' FWL  
SW/4 NW/4 Section 35 (E), T24N, R 8W

San Juan ,NM  
Elevation: 6871'  
API: 30-045-35625

Tops	MD	TVD
OJO_ALAMO	1213	1204
KIRTLAND	1338	1325
PICTURE_CLIFFS	1879	1847
LEWIS	2050	2012
CHACRA	2313	2266
CLIFF_HOUSE	3414	3334
MENEFEE	3467	3385
PT_LOOKOUT	4305	4196
MANCOS	4547	4430
GALLUP	4913	4787



TD: 11187' MD  
TVD: 5484'  
PBTD: 11098' MD

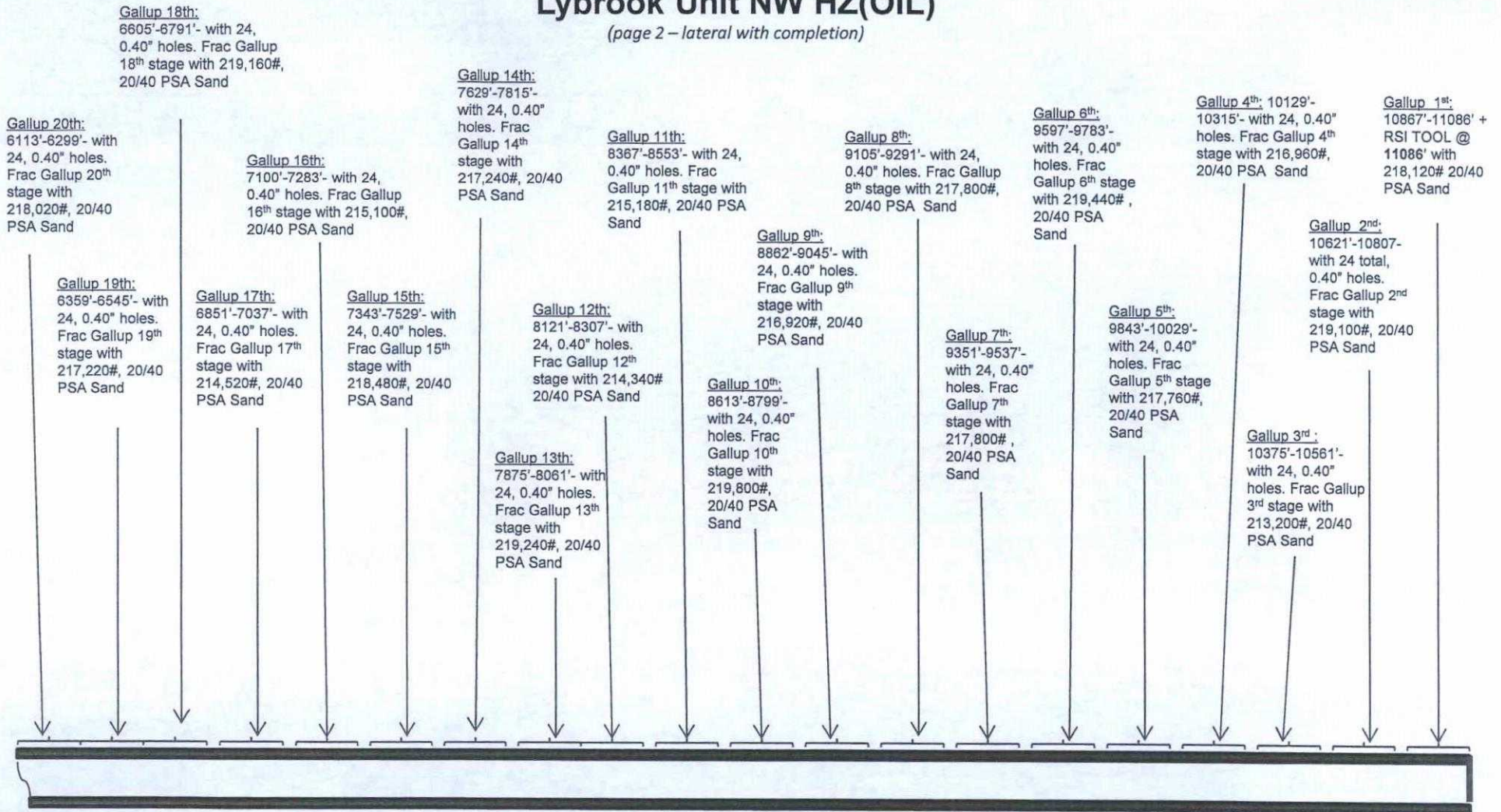
HOLE SIZE	CASING	CEMENT	VOLUME	CMT TOP
12-1/4"	9-5/8"	10lsx	163cu.ft.	Surface
8-3/4"	7"	1142sx	1636cu. ft.	Surface
6-1/8"	4-1/2"	520sx	707cu. ft.	TOL 5895'

Mj 12/15/15



# NW Lybrook UT # 132H Lybrook Unit NW HZ(OIL)

(page 2 – lateral with completion)



See page 1 for upper portion of hole