

UNITED STATES  
DEPARTMENT OF THE INTERIOR  
BUREAU OF LAND MANAGEMENTFORM APPROVED  
OMB NO. 1004-0135  
Expires: July 31, 2010**SUNDRY NOTICES AND REPORTS ON WELLS**  
*Do not use this form for proposals to drill or to re-enter an abandoned well. Use form 3160-3 (APD) for such proposals.*5. Lease Serial No.  
NMSF079365A

6. If Indian, Allottee or Tribe Name

7. If Unit or CA/Agreement, Name and/or No.  
892000916B8. Well Name and No.  
RINCON UNIT 839. API Well No.  
30-039-07005-00-S110. Field and Pool, or Exploratory  
BLANCO MESAVERDE11. County or Parish, and State  
RIO ARRIBA COUNTY, NM**SUBMIT IN TRIPLICATE - Other instructions on reverse side.**

1. Type of Well

☐ Oil Well ☒ Gas Well ☐ Other2. Name of Operator  
CHEVRON MIDCONTINENT, LPContact: APRIL E POHL  
E-Mail: april.pohl@chevron.com3a. Address  
332 ROAD 3100  
AZTEC, NM 874103b. Phone No. (include area code)  
Ph: 505.333.1941

4. Location of Well (Footage, Sec., T., R., M., or Survey Description)

Sec 23 T27N R6W NWNE 0990FNL 1650FEL  
36.564407 N Lat, 107.432785 W Lon**12. CHECK APPROPRIATE BOX(ES) TO INDICATE NATURE OF NOTICE, REPORT, OR OTHER DATA**

TYPE OF SUBMISSION	TYPE OF ACTION			
<input type="checkbox"/> Notice of Intent	<input type="checkbox"/> Acidize	<input type="checkbox"/> Deepen	<input type="checkbox"/> Production (Start/Resume)	<input type="checkbox"/> Water Shut-Off
<input checked="" type="checkbox"/> Subsequent Report	<input type="checkbox"/> Alter Casing	<input type="checkbox"/> Fracture Treat	<input type="checkbox"/> Reclamation	<input type="checkbox"/> Well Integrity
<input type="checkbox"/> Final Abandonment Notice	<input type="checkbox"/> Casing Repair	<input type="checkbox"/> New Construction	<input type="checkbox"/> Recomplete	<input checked="" type="checkbox"/> Other
	<input type="checkbox"/> Change Plans	<input type="checkbox"/> Plug and Abandon	<input type="checkbox"/> Temporarily Abandon	
	<input type="checkbox"/> Convert to Injection	<input type="checkbox"/> Plug Back	<input type="checkbox"/> Water Disposal	

13. Describe Proposed or Completed Operation (clearly state all pertinent details, including estimated starting date of any proposed work and approximate duration thereof. If the proposal is to deepen directionally or recompleat horizontally, give subsurface locations and measured and true vertical depths of all pertinent markers and zones. Attach the Bond under which the work will be performed or provide the Bond No. on file with BLM/BIA. Required subsequent reports shall be filed within 30 days following completion of the involved operations. If the operation results in a multiple completion or recompleat in a new interval, a Form 3160-4 shall be filed once testing has been completed. Final Abandonment Notices shall be filed only after all requirements, including reclamation, have been completed, and the operator has determined that the site is ready for final inspection.)

A BRADENHEAD REPAIR HAS BEEN COMPLETED ON THIS WELL:  
The CBL is on the NMOCD website.

12/14/2015

MIRU. Check well pressures: Tbg 70psi, 5-1/2" 0 psi, 7-5/8" 750 psi, 10-3/4" 0 psi. N/D wellhead,  
N/U BOP's & pressure test flange connection to 1000psi-Good.

12/15/2015

Check well pressure: Tbg 70psi, 5-1/2" 0 psi, 7-5/8" 780 psi, 10-3/4" 0 psi. Bled off initial  
pressure. Pull, release Baker R3 packer. Continue POOH, laydown production string. Found BHA to  
be: 131jts, packer, 52jts, SN, notched collar. Packer was at 4025', EOT @5606'. P/U & RIH w/  
4-3/4" bit & 5-1/2" casing scraper on 2-3/8" workstring to 4943'. SWIFN.

12/16/2015

**OIL CONS. DIV DIST. 3****JAN 25 2016**

14. I hereby certify that the foregoing is true and correct.

**Electronic Submission #328833 verified by the BLM Well Information System****For CHEVRON MIDCONTINENT, LP, sent to the Farmington****Committed to AFMSS for processing by WILLIAM TAMBEKOU on 01/21/2016 (16WMT0133SE)**

Name (Printed/Typed) APRIL E POHL

Title REGULATORY SPECIALIST

Signature (Electronic Submission)

Date 01/18/2016

**THIS SPACE FOR FEDERAL OR STATE OFFICE USE**

Approved By

**ACCEPTED**WILLIAM TAMBEKOU  
Title PETROLEUM ENGINEER

Date 01/21/2016

Conditions of approval, if any, are attached. Approval of this notice does not warrant or  
certify that the applicant holds legal or equitable title to those rights in the subject lease  
which would entitle the applicant to conduct operations thereon.

Office Farmington

Title 18 U.S.C. Section 1001 and Title 43 U.S.C. Section 1212, make it a crime for any person knowingly and willfully to make to any department or agency of the United States any false, fictitious or fraudulent statements or representations as to any matter within its jurisdiction.

**\*\* BLM REVISED \*\* BLM REVISED \*\* BLM REVISED \*\* BLM REVISED \*\* BLM REVISED \*\*****NMOCD**

6



**Additional data for EC transaction #328833 that would not fit on the form**

**32. Additional remarks, continued**

SITP 120psi, 5-1/2" 20psi, 7-5/8" 780psi, 10-3/4" 0psi. Bled off tubing pressure. POOH w/bit & scraper.

P/U & RIH w/ 5-1/2" composite bridge plug (QuickDrill) & set @4800'. Load casing w/103 bbls fresh water, pressure up to 640psi. Note: water was extremely cold & icy. Monitor pressure for 30min, pressure increased from 640psi to 840psi presumably due to heat expansion. POOH w/setting tool. SWIFN.

12/17/2015

Check well pressure: 5-1/2" 0psi, 7-5/8" 50psi, 10-3/4" 0psi. R/U Wireline unit. RIH w/CBL tool. Tag composite bridge plug @4800'. Pull up while recording cement bond. Appears to have clean top @3950'. Sent information to state representative & engineers for determination of squeeze perms.

12/18/2015

Check well pressure: 5-1/2" 0psi, 7-5/8" 450psi, 10-3/4" 0psi. Bled off initial intermed casing pressure. R/U wireline unit. RIH w/3-1/8" squeeze guns loaded @ 4spf. Correlate & perforate @3920'. POOH, R/D wireline unit.

Pumped a total of 100bbls fresh water w/ rig pump @4BPM initial pressure 400psi. After pumping 71bbls pressure started to increase with final pressure at 750psi. No circulation up the 7-5/8".

Shut down pump, well flowed back 80bbls water up the 5-1/2" while 7-5/8" continued to vent gas.

Make up Halliburton Quickdrill composite cement retainer. When installing setting tool into the retainer, the retainer fell apart on the rig floor. Tool malfunctioned. Pressure test BOP's, pipe/blind/annular to 1400/250psi high/low and all valves. Tested good.

SEE ATTACHED FOR REMAINDER OF PROCEDURE.



12/19/2015

Check well pressure: 5-1/2" vac, 7-5/8" 380psi, 10-3/4" 0psi. Bled off initial intermediate pressure. P/U & RIH w/ 5-1/2" composite cement retainer. RIH to 3896' & set retainer. Load casing, took 2bbls to fill, and pressure test to 500psi - good.

R/U cements. Pressure test lines to 5000psi. Establish injection rate of 3BPM 350psi w/ 20bbls fresh water, 10bbls "mud clean", 10bbls fresh water. Mix & pump lead cement 12.5ppg blended slurry. Caught circulation after 54bbls fluid pumped (mud-clean through perms). Maintained circulation while pumping lead cement, total 75bbls cement. Switched to tail cement (neat Type III) at 14.6ppg and circulation rate gradually declined to intermittent trickle after total of 123bbls cement pumped (50% excess). Displace w/ 12.5bbls fresh water, final shut down pressure 600psi. Sting out of retainer, reverse w/ 25bbls fresh water, saw 2.5bbl cement to tank. Left 20ft cement on top of retainer. (TOC 3875').

R/D cementers. POOH w/ setting tool. No communication with 5-1/2" or 10-3/4" throughout job. Shut well in and secured location.

1/5/2016

Check well pressure: 10-3/4" 0psi, 7-5/8" 50psi, 5-1/2" 0psi. Bled off intermediate casing pressure, bled off instantaneously. Monitored pressure throughout day - constant 5psi on gauge.

R/U BOP tester. Tested blind/pipe/annular & all valves to 1500/250 psi high/low. All good.

P/U & RIH w/ 4-3/4" bit and four 3-1/8" collars to 3740'. SWIFN.

1/6/2015

Check well pressure: 10-3/4" 0psi, 7-5/8" 5psi, 5-1/2" 0psi, 2-3/8" 0psi. Opened up well, R/U swivel & break circulation w/ 2% KCl water.

Drill out cement from 3866' to retainer @3896'. Drilled retainer in approximately 1hr. Continue drilling solid cement to 3936' and fell through. Circulate clean, R/D swivel.

Pressure test 5-1/2" to 600psi for 15min while monitoring gauge - no visible leak off detected. Good test. No communication with 7-5/8". POOH w/ 4-3/4" bit.

N/D BOP's. Remove 2k tubing head with obsolete, damaged hold down pin. Measure 5-1/2" casing stub & weld on additional stub for new tubing head. Install new 3k tubing head w/ double flanged 5k wing valves. Tested void to 1500psi - good. N/U BOP's & shut in blinds.

SWIFN.

1/7/2015

Check pressure: 10-3/4" 0psi, 7-5/8" 0psi, 5-1/2" 0psi. Spot in test trailer & fill casing w/ 1.5bbls 2% KCl. Record & chart casing pressure test to 580psi for 30min. No leak off. State representative could not make it to location due to road conditions. E-mailed image of chart &

Brandon Powell (NMOCD) verbally approved MIT. Chart will be officially filed with office.

RIH w/ 4-3/4" bit & four 3-1/8" collars to 3130', unload hole with air unit, RIH to 4800', unload remaining fluid with air unit.

Drill out composite bridge plug @4800' & continue to PBTD. Tagged fill at 5696' (24ft of fill). Cleaned out to PBTD (5720'). Circulate clean, cut air unit, R/D swivel. POOH laying down 2-3/8" workstring to 3580'. SWIFN.

1/8/2015

Well pressure: 10-3/4" 0psi, 7-5/8" 0psi, 5-1/2" 100psi, 2-3/8" 100psi. Bled off initial pressure. POOH, lay down 2-3/8" workstring.

P/U & RIH w/ SN on new 2-3/8" workstring. RIH to 5553' w/ 170jts and land tubing.

N/D BOP's, N/U wellhead. Pressure test void to 1500psi - good. RDMO.



# CEMENT JOB REPORT



CUSTOMER CHEVRON CORPORATION		DATE 19-DEC-15	F.R. # 10011188894	SERV. SUPV. Karl Culler	
LEASE & WELL NAME RINCON #83 - API 30039070050000		LOCATION 23B-27N-6W		COUNTY-PARISH-BLOCK Rio Arriba New Mexico	
DISTRICT Farmington		DRILLING CONTRACTOR RIG # ALLIANCE #8		TYPE OF JOB Squeeze-Perforation	
SIZE & TYPE OF PLUGS	LIST-CSG-HARDWARE	MECHANICAL BARRIERS	MD	TVD	HANGER TYPES MD TVD
MATERIALS FURNISHED BY BJ		LAB REPORT NO.	PHYSICAL SLURRY PROPERTIES		
			SACKS OF CEMENT	SLURRY WGT PPG	SLURRY YLD FT
Fresh Water				8.34	
Mud Clean II				8.4	
Fresh Water				8.34	
(10:90) Poz:Type III			195	12.5	2.13
Type III Neat			200	14.6	1.37
Fresh Water				8.34	
Fresh Water				8.34	
Available Mix Water	200 Bbl.	Available Displ. Fluid	200 Bbl.	TOTAL	194.5 86.29
HOLE		TBG-CSG-D.P.			COLLAR DEPTHS
SIZE	% EXCESS	DEPTH	ID	OD	WGT.
6.75	50	3920	1.995	2.375	4.7
		TBG			
		MD	TVD	GRADE	SHOE
		3896	3896	J-55	
LAST CASING		PKR-CMT RET-BR PL-LINER		PERF. DEPTH	TOP CONN
ID	OD	WGT	TYPE	MD	TVD
7.0	7.625	26	CSG	3425	3425
		BRAND & TYPE	DEPTH	TOP	BTM
		Cement Retainer	3896	3920	3920
5.0	5.5	16	CSG	3920	3920
		SIZE	THREAD	TYPE	WGT.
		2.375	EUE	FRESH WATER	8.34
DISPL. VOLUME		DISPL. FLUID		CAL. PSI	CAL. MAX PSI
VOLUME	UOM	TYPE	WGT.	BUMP PLUG	TO REV.
12.5	BBLS	Fresh Water	8.34	0	250
		Fresh Water	8.34		
		OP. MAX	MAX TBG PSI	MAX CSG PSI	MIX WATER
		SQ. PSI	RATED	Operator	RATED
		2000	7700	6160	4810
				3848	FRAC TANK

EXPLANATION: TROUBLE SETTING TOOL, RUNNING CSG, ETC. PRIOR TO CEMENTING: Running tubing & SET Cement Retainer,

PRESSURE/RATE DETAIL						EXPLANATION	
TIME HR:MIN.	PRESSURE - PSI		RATE BPM	Bbl. FLUID PUMPED	FLUID TYPE	SAFETY MEETING: BJ CREW <input checked="" type="checkbox"/> CO. REP. <input checked="" type="checkbox"/>	
	PIPE	ANNULUS				TEST LINES 6000 PSI	
						CIRCULATING WELL - RIG <input checked="" type="checkbox"/> BJ <input type="checkbox"/>	
07:00						ARRIVE ON LOCATION	
09:00						PRE-RIG UP SAFETY MEETING "FINISH RIGGING UP"	
10:10						PRE-JOB SAFETY MEETING	
10:30	6000	0	0	.2	H2O	PRESSURE TEST LINES @ 6000 PSI	
10:38	100	0	2	.3	H2O	.3 BBLS CIRCULATE WELL H2O	
10:49	0	500	0	.2	H2O	PRESSURE TEST BACKSIDE/ CEMENT RETAINER @ 550PSI	
10:54	800	0	2	20	H2O	ST 20 BBLS H2O SPACER / NO CIRCULATION THOUGH 7 5/8"	
11:02	50	0	2.5	10	MUDCLEA	ST 10 BBLS MUDCLEAN SPACER	
11:06	50	0	2.5	10	H2O	ST 10 BBLS H2O SPACER	
11:10	353	0	2.5	15	CMT	ST LEAD CEMENT @ 12.5	
11:16	420	0	2.5	59	CMT	@ 15 BBLS LEAD CEMENT AWAY GOT CIRCULATION / 74 BBLS LEAD CEMENT TOTAL	
11:38	734	0	2.4	48	CMT	ST 48 BBLS TAIL CEMENT @ 14.6	
11:59	176	0	2	0	H2O	ST 12.5 BBLS DISPLACEMENT H2O	
12:03	20	0	1	3	H2O	3 BBLS AWAY SLOWED DOWN TO 1 BBL/MIN	
12:08	615	0	1	9.5	H2O	9.5 BBLS AWAY CAUGHT PRESSURE @ 615 PSI	
12:10	375	0		12.5	H2O	SHUT DOWN / STING-OUT OF RETAINER @ 375 PSI	
12:21	0	780	2	20	H2O	ST 20 BBLS REVERSE OUT H2O / 3 BBLS CMT BACK	



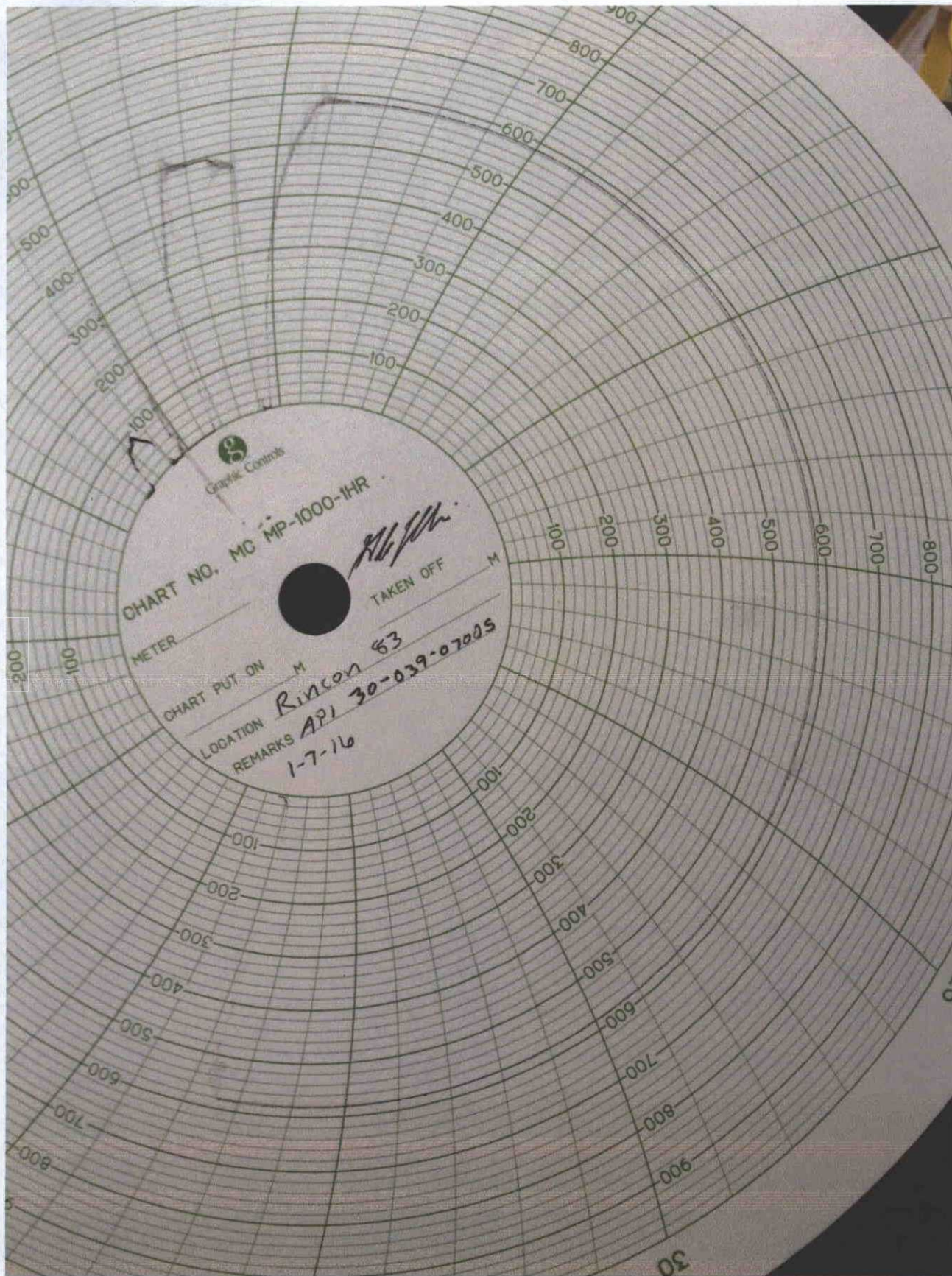


CHART NO. MC MP-1000-IHR

*[Signature]*  
TAKEN OFF

METER

CHART PUT ON M

LOCATION

REMARKS Rincon 83  
API 30-039-07005  
1-7-16





# Wellbore Schematic

