

UNITED STATES
DEPARTMENT OF THE INTERIOR
BUREAU OF LAND MANAGEMENT

FORM APPROVED
OMB No. 1004-0137
Expires: July 31, 2010

SUNDRY NOTICES AND REPORTS ON WELLS
Do not use this form for proposals to drill or to re-enter an abandoned well. Use Form 3160-3 (APD) for such proposals.

SUBMIT IN TRIPLICATE - Other instructions on page 2.

1. Type of Well

☐ Oil Well

☒ Gas Well

☐ Other

2. Name of Operator

Burlington Resources Oil & Gas Company LP

3a. Address

PO Box 4289, Farmington, NM 87499

3b. Phone No. (include area code)

(505) 326-9700

4. Location of Well (Footage, Sec., T., R., M., or Survey Description)

Unit C (NENW), 790' FNL & 1500' FWL, Sec. 15, T31N, R12W

5. Lease Serial No.

SF-077651

6. If Indian, Allottee or Tribe Name

7. If Unit of CA/Agreement, Name and/or No.

8. Well Name and No.

Richardson 9

9. API Well No.

30-045-10813

10. Field and Pool or Exploratory Area

Basin Dakota

11. Country or Parish, State

San Juan

New Mexico

12. CHECK THE APPROPRIATE BOX(ES) TO INDICATE NATURE OF NOTICE, REPORT OR OTHER DATA

TYPE OF SUBMISSION

TYPE OF ACTION

☒ Notice of Intent

☐ Subsequent Report

☐ Final Abandonment Notice

☐ Acidize

☐ Alter Casing

☐ Casing Repair

☐ Change Plans

☐ Convert to Injection

☐ Deepen

☐ Fracture Treat

☐ New Construction

☒ Plug and Abandon

☐ Plug Back

☐ Production (Start/Resume)

☐ Reclamation

☐ Recomplete

☐ Temporarily Abandon

☐ Water Disposal

☐ Water Shut-Off

☐ Well Integrity

☐ Other

13. Describe Proposed or Completed Operation: Clearly state all pertinent details, including estimated starting date of any proposed work and approximate duration thereof. If the proposal is to deepen directionally or recompleat horizontally, give subsurface locations and measured and true vertical depths of all pertinent markers and zones. Attach the bond under which the work will be performed or provide the Bond No. on file with BLM/BIA. Required subsequent reports must be filed within 30 days following completion of the involved operations. If the operation results in a multiple completion or recompleat in a new interval, a Form 3160-4 must be filed once Testing has been completed. Final Abandonment Notices must be filed only after all requirements, including reclamation, have been completed and the operator has determined that the site is ready for final inspection.)

Burlington Resources requests permission to P&A the subject well per the attached procedure, current and proposed wellbore schematic. A Pre-Disturbance Site Visit will be conducted as soon as possible. This well is being P&A'd with the remedial rig due to a casing failure. A closed loop system will be used.

**SEE ATTACHED FOR
CONDITIONS OF APPROVAL**

**BLM'S APPROVAL OR ACCEPTANCE OF THIS
ACTION DOES NOT RELIEVE THE LESSEE AND
OPERATOR FROM OBTAINING ANY OTHER
AUTHORIZATION REQUIRED FOR OPERATIONS
ON FEDERAL AND INDIAN LANDS**

***Reclamation plan has not been approved.**

14. I hereby certify that the foregoing is true and correct. Name (Printed/Typed)

Crystal Walker

Regulatory Coordinator

Title

Signature

Date

2/22/2016

THIS SPACE FOR FEDERAL OR STATE OFFICE USE

Approved by

Title

FE

Date

2/23/16

Conditions of approval, if any, are attached. Approval of this notice does not warrant or certify that the applicant holds legal or equitable title to those rights in the subject lease which would entitle the applicant to conduct operations thereon.

Office

FFO

Title 18 U.S.C. Section 1001 and Title 43 U.S.C. Section 1212, make it a crime for any person knowingly and willfully to make to any department or agency of the United States any false, fictitious or fraudulent statements or representations as to any matter within its jurisdiction.

(Instruction on page 2)

NMOCD

RECEIVED

FEB 22 2016
Farmington Field Office
Bureau of Land Management

5 116

**ConocoPhillips
RICHARDSON 9
Expense - P&A**

Lat 36° 54' 13.5" N

Long 108° 5' 11.58" W

PROCEDURE

A rig is currently on location and will be used to plug the wellbore.

This project requires the use of an A-Plus steel tank to handle waste fluids circulated from the well and cement wash up.

1. Hold pre-job safety meeting. Comply with all NMOCD, BLM, and COP safety and environmental regulations.
2. PU 4-1/2" cement retainer on tubing, and set at 2858'. Pressure test tubing to 1000 psi. Sting out of CR. Load hole, and pressure test casing to 800 psi. If casing does not test, spot or tag subsequent plugs as appropriate. POOH with tubing.
3. RU wireline and run CBL with 500 psi on casing from cement retainer to surface to identify TOC. Adjust plugs as necessary for new TOC. *Email log copy to Wells Engineer, Troy Salyers (BLM) at tsalyers@blm.gov, and Brandon Powell (NMOCD) at brandon.powell@state.nm.us upon completion of logging operations.*

All cement volumes use 100% excess outside pipe and 50' excess inside pipe. The stabilizing wellbore fluid will be 8.3 ppg, sufficient to balance all exposed formation pressures. All cement will be ASTM Class B mixed at 15.6 ppg with a 1.18 cf/sk yield.

4. Plug 1 - Casing from fish top to perforations, 2858' - 7194', 287 Sacks Class B Cement

Sting into cement retainer. Establish injection rate through retainer with water. Do not exceed 1000 psi surface pressure. Mix cement and pump under retainer until full volume is placed or until the well locks up. Sting out and reverse circulate the well clean. Pull up hole.

5. Plug 2 - Pictured Cliffs and Fruitland Formation Tops, 1910' - 2658', 61 Sacks Class B Cement

Mix cement as described above and spot a balanced plug inside casing. Pull up hole

6. Plug 3 - Kirtland and Ojo Alamo Formation Tops, 894' - 1094', 19 Sacks Class B Cement

Mix cement as described above and spot a balanced plug inside casing. Pull up hole

7. Plug 4 - Surface Plug, 0' - 379', 33 Sacks Class B Cement

Connect the pump line to the bradenhead valve and attempt to pressure test the BH annulus to 300 psi. Note the volume to load. If the BH annulus holds pressure, establish circulation out casing valve with water. Mix Class B cement and spot balanced plug inside casing from 379' to surface, circulating good cement out casing valve. TOO and LD tubing. SI well and WOC. If the BH annulus does not test, then perforate at the appropriate depth and attempt to circulate cement to surface, filling the casing and the BH annulus to surface. Shut well in and WOC.

8. Nipple down BOP and cut off casing below the casing flange. Install P&A marker with cement to comply with regulations. RDMO.

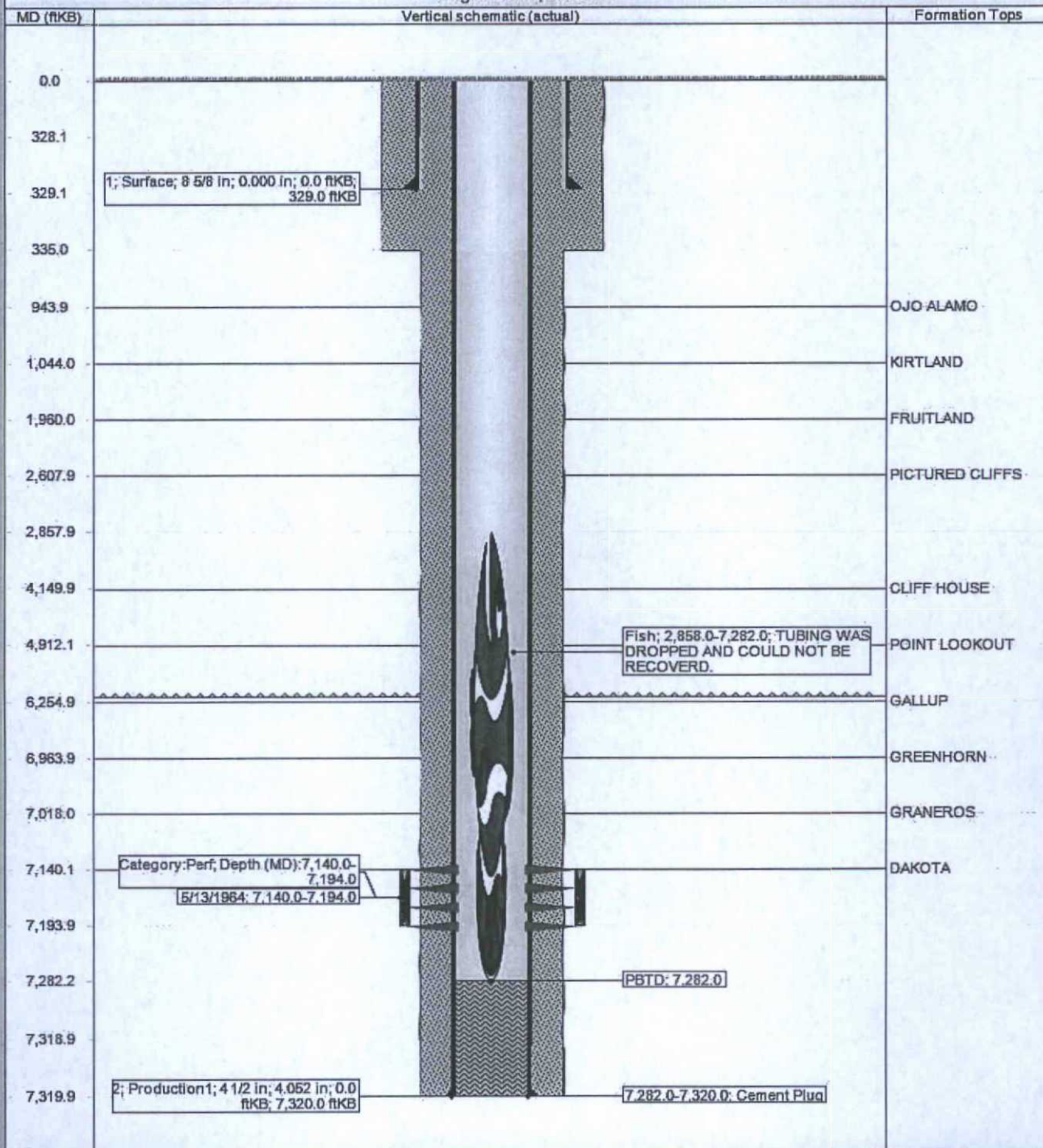


CURRENT SCHEMATIC

RICHARDSON #9

District NORTH	Field Name BASIN DAKOTA (PRORATED GAS)	API / UWI 3004510813	County SAN JUAN	State/Province NEW MEXICO
Original Spud Date 4/18/1964	Surface Legal Location 015-031N-012W-C	E/W Dist (ft) 1,500.00	E/W Ref FWL	N/S Dist (ft) 790.00
				N/S Ref FNL

Original Hole, 1/1/2020



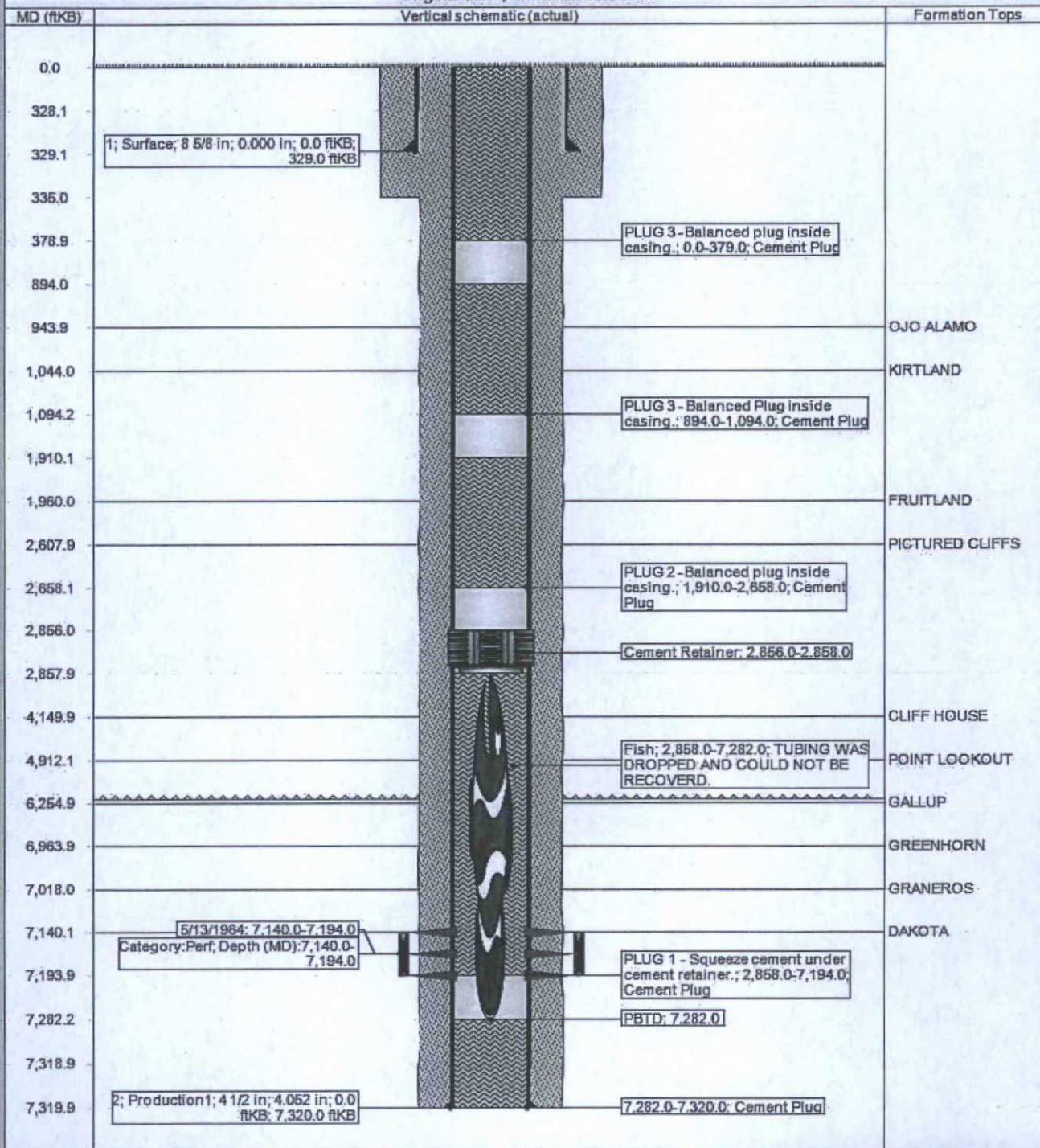


CURRENT SCHEMATIC

RICHARDSON #9

District NORTH	Field Name BASIN DAKOTA (PRORATED GAS)	API / UWI 3004510813	County SAN JUAN	State/Province NEW MEXICO
Original Spud Date 4/18/1964	Surface Legal Location 015-031N-012W-C	E/W Dist (ft) 1,500.00	E/W Ref FWL	N/S Dist (ft) 790.00 N/S Ref FNL

Original Hole, 1/1/2020 03:00:00



UNITED STATES DEPARTMENT OF THE INTERIOR
BUREAU OF LAND MANAGEMENT
FARMINGTON DISTRICT OFFICE
6251 COLLEGE BLVD.
FARMINGTON, NEW MEXICO 87402

Attachment to notice of
Intention to Abandon:

Re: Permanent Abandonment
Well: Richardson 9

CONDITIONS OF APPROVAL

1. Plugging operations authorized are subject to the attached "General Requirements for Permanent Abandonment of Wells on Federal and Indian Lease."
2. Farmington Office is to be notified at least 24 hours before the plugging operations commence (505) 564-7750.
3. The following modifications to your plugging program are to be made:
 - a) Set plug #2B (2290-2190) ft. to cover the Fruitland top. BLM picks top of Fruitland at 2240 ft.
 - b) Set plug #3 (901-801) ft. to cover the Kirtland top. BLM picks top of Kirtland at 851 ft. Ojo Alamo is not present in this area.

H₂S has not been reported in this section, however, low to **very high** concentrations of H₂S (18 ppm – **1,150 ppm** GSV) have been reported in wells within a 1 mile radius of this location. **It is imperative that H₂S monitoring and safety equipment be on location during plugging operations at this wellsite.**

CBL was run on 2/22/2016.

You are also required to place cement excesses per 4.2 and 4.4 of the attached General Requirements.

Office Hours: 7:45 a.m. to 4:30 p.m.