

NE CHACO COM #903H CHACO UNIT NE HZ(oil)

(page 1)

Spud: 7/22/15

Completed: 11/17/15

OIL CONS. DIV DIST. 3

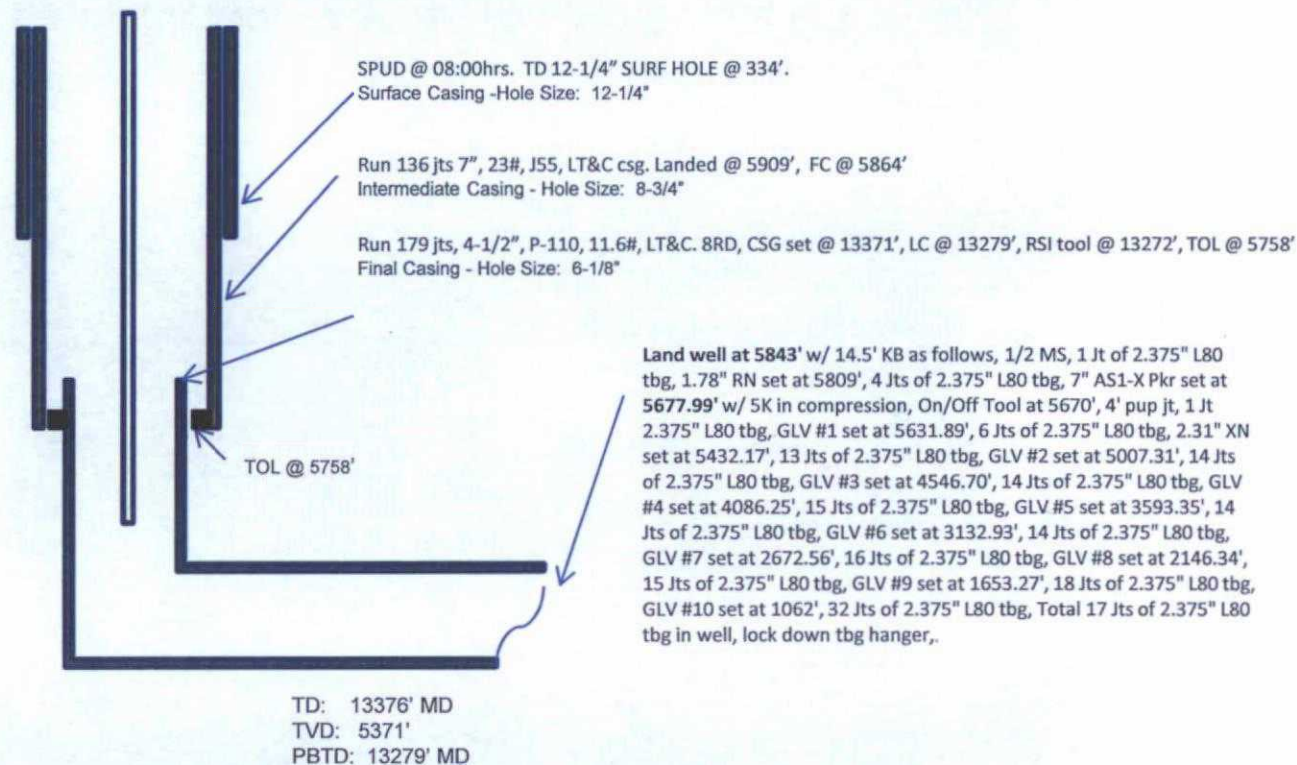
NOV 30 2015

SHL: 1186' FNL & 474' FWL
NW/4 NW/4 Section 13 (D), T23N, R7W

BHL: 988' FNL & 372' FWL
NW/4 NW/4 Section 34 (D), T23N, R7W

RIO ARRIBA
Elevation: 7014'
API: 30-039-31214

Formation Top	MD	TVD
OJO_ALAMO	1423	1409
KIRTLAND	1738	1712
PICTURE_CLIFFS	2062	2025
LEWIS	2142	2103
CHACRA	2517	2468
CLIFF_HOUSE	3614	3523
MENEFEE	3666	3573
PT_LOOKOUT	4403	4286
MANCOS	4621	4495
GALLUP	5031	4890



HOLE SIZE	CASING	CEMENT	VOLUME	CMT TOP
12-1/4"	9-5/8"	101 sx	222 cu.ft.	Surface
8-3/4"	7"	1137 sx	1642 cu.ft.	Surface
6-1/8"	4-1/2"	755 sx	1027 cu. ft.	TOL 5758'

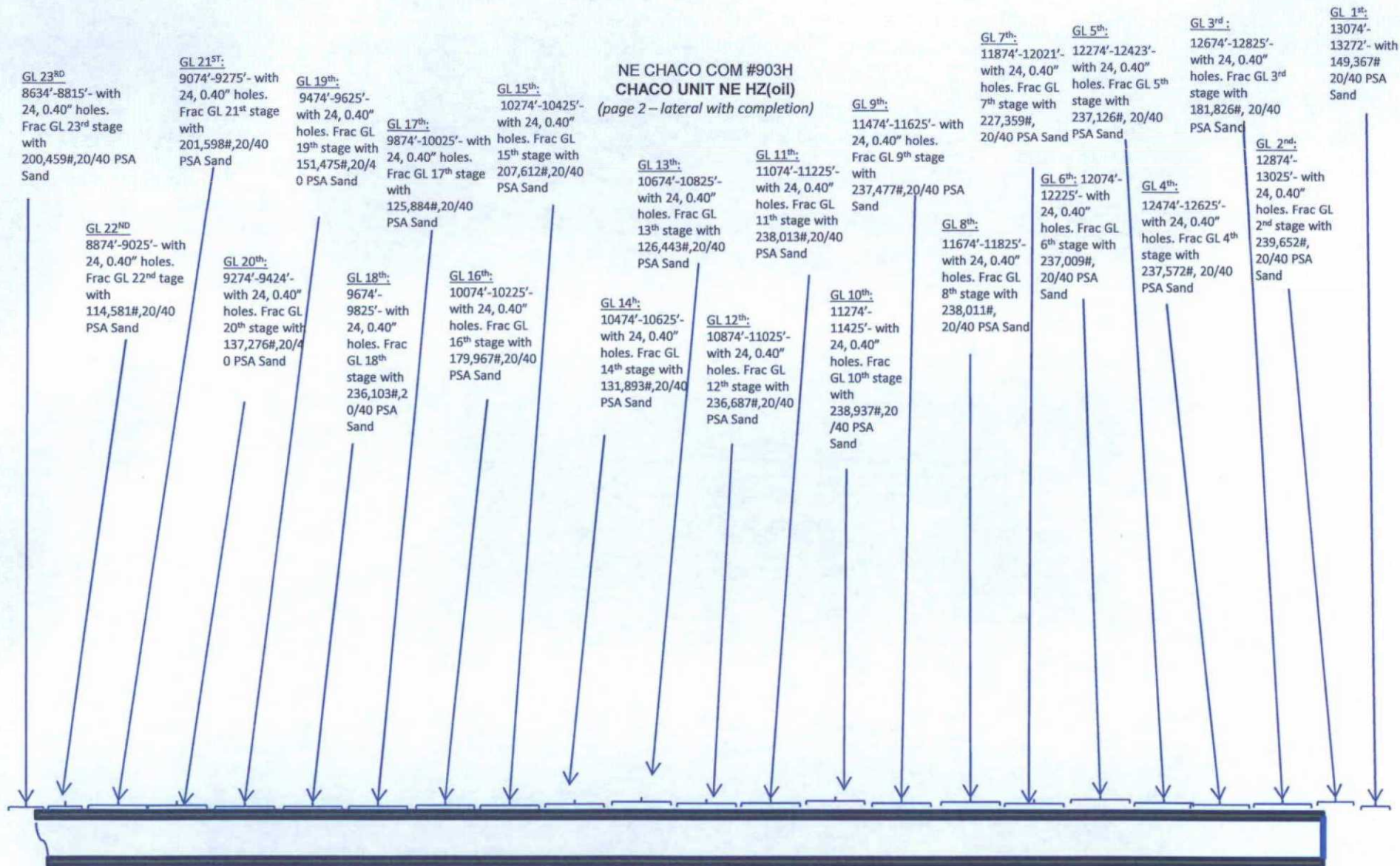
CONFIDENTIAL

Lg 11/23/15

FV

3

NE CHACO COM #903H
CHACO UNIT NE HZ(oil)
(page 2 – lateral with completion)



See page 1 for upper portion of hole

NE CHACO COM #903H CHACO UNIT NE HZ(oil)

(page 2 – lateral with completion)

GL 36TH
6004'-6105'- with 24,
0.40" holes. Frac GL
36th stage with
112,518#,20/40 PSA
Sand

GL 34TH
6354'-6505'- with 24,
0.40" holes. Frac GL
34th stage with
172,318#,20/40 PSA
Sand

GL 35TH
6154'-6301'- with
24, 0.40" holes.
Frac GL 35th
stage with
136,303#,20/40
PSA Sand

GL 33rd
6554'-6705'- with 24,
0.40" holes. Frac GL
33rd stage with
143,070#,20/40 PSA
Sand

GL 32nd
6751'-6893'- with
24, 0.40" holes.
Frac GL 32nd
stage with
125,701#,20/40
PSA Sand

GL 31st
6954'-7105'-
with 24, 0.40"
holes. Frac GL
31st stage
with
108,002#,20/
40 PSA Sand

GL 30th
7154'-7305'-
with 24, 0.40"
holes. Frac GL
30th stage
with
153,760#,20/
40 PSA Sand

GL 29th
7354'-7505'-
with 24, 0.40"
holes. Frac GL
29th stage with
133,135#,20/40
PSA Sand

GL 28th
7554'-7705'-
with 24,
0.40" holes.
Frac GL 28th
stage with
124,126#,20/
40 PSA
Sand

GL 27th
7754'-7905'-
with 24, 0.40"
holes. Frac GL
27th stage with
226,820#,20/40
PSA Sand

GL 26th
7954'-8105'-
with 24, 0.40"
holes. Frac GL
26th stage with
118,080#,20/4
0 PSA Sand

*GL 25th
8152'-8331'-
with 24,
0.40" holes.
Frac GL 25th
stage with
200,548#,20/
40 PSA
Sand

*GL 24th
8394'-
8575'- with
24, 0.40"
holes. Frac
GL 24th
stage with
199,237#,2
0/40 PSA
Sand

See page 1 for upper portion of hole