

Submit 1 Copy To Appropriate District Office  
District I - (575) 393-6161  
1625 N. French Dr., Hobbs, NM 88240  
District II - (575) 748-1283  
811 S. First St., Artesia, NM 88210  
District III - (505) 334-6178  
1000 Rio Brazos Rd., Aztec, NM 87410  
District IV - (505) 476-3460  
1220 S. St. Francis Dr., Santa Fe, NM 87505

State of New Mexico  
Energy, Minerals and Natural Resources

Form C-103  
Revised July 18, 2013

OIL CONSERVATION DIVISION  
1220 South St. Francis Dr.  
Santa Fe, NM 87505

WELL API NO.  
30-045-33474

5. Indicate Type of Lease  
STATE ☐ FEE ☐

6. State Oil & Gas Lease No.  
**Federal Lease NMSF079003**

7. Lease Name or Unit Agreement Name

Northeast Blanco Unit

8. Well Number  
68M

9. OGRID Number  
000778

10. Pool name or Wildcat  
Basin Dakota, Los Pinos; FRT SND PC,  
South

SUNDRY NOTICES AND REPORTS ON WELLS

(DO NOT USE THIS FORM FOR PROPOSALS TO DRILL OR TO DEEPEN OR PLUG BACK TO A DIFFERENT RESERVOIR. USE "APPLICATION FOR PERMIT" (FORM C-101) FOR SUCH PROPOSALS.)

1. Type of Well: Oil Well ☐ Gas Well ☒ Other

2. Name of Operator  
BP America Production Company

3. Address of Operator  
737 North Eldridge Parkway, 12.181A  
Houston, TX 77079

4. Well Location

Unit Letter A\_: 500 feet from the North line and 1205 feet from the East line  
Section 35 Township 31N Range 07W NMPM County San Juan

11. Elevation (Show whether DR, RKB, RT, GR, etc.)  
6333'

12. Check Appropriate Box to Indicate Nature of Notice, Report or Other Data

NOTICE OF INTENTION TO:

PERFORM REMEDIAL WORK ☐ PLUG AND ABANDON ☐  
TEMPORARILY ABANDON ☐ CHANGE PLANS ☐  
PULL OR ALTER CASING ☐ MULTIPLE COMPL ☐  
DOWNHOLE COMMINGLE ☒  
CLOSED-LOOP SYSTEM ☒  
OTHER: ☐

SUBSEQUENT REPORT OF:

REMEDIAL WORK ☐ ALTERING CASING ☐  
COMMENCE DRILLING OPNS. ☐ P AND A ☐  
CASING/CEMENT JOB ☐  
OTHER: ☐

13. Describe proposed or completed operations. (Clearly state all pertinent details, and give pertinent dates, including estimated date of starting any proposed work). SEE RULE 19.15.7.14 NMAC. For Multiple Completions: Attach wellbore diagram of proposed completion or recompletion.

BP America Production Company respectfully requests to downhole commingle the subject well according to the detailed operations on the attached procedure.

Please see the attached DHC procedure, including wellbore diagrams and C-102s.

OIL CONS. DIV DIST. 3

DHC 4724-A

MAR 28 2016

BLM notified via 3160-5 sundry for Federal Lease NMSF079003

Spud Date:

04/27/2006

Rig Release Date:

I hereby certify that the information above is true and complete to the best of my knowledge and belief.

SIGNATURE Toya Colvin TITLE Regulatory Analyst DATE 03/24/2016

Type or print name Toya Colvin E-mail address: Toya.Colvin@bp.com PHONE: 281-366-7148

For State Use Only

APPROVED BY: [Signature] TITLE DEPUTY OIL & GAS INSPECTOR DATE 4-1-16

Conditions of Approval (if any):

AV

## **Northeast Blanco Unit 68M**

API # 30-045-33474-00

Location: Unit A - Sec. 35 - T31N - R07W

San Juan County, New Mexico

### **Reason/Background for Job**

The NEBU 68M was drilled and completed in the PC and DK in 2006. In order to optimize production in the well, it is proposed to unset the packer, pull tubing, Cleanout to PBTD (if needed) and run tubing allowing PC and DK to be bottom hole commingled.

### **Basic Job Procedure**

1. Unset Packer
2. Pull tubing
3. Clean out to PBTD (if needed)
4. Run tubing without packet
5. Return well to production

## Current WBD



NEBU 68M  
PC/DK  
API # 30-045-33474  
Unit A - Sec. 35 - T31N - R07W  
San Juan, New Mexico

### Formation Tops

Ojo Alamo	2286
Kirtland	2398
Fruitland	2854
Pictured Cliffs	3368
Lewis	3467
Cliff House	5290
Menefee	5330
Point Lookout	5628
Mancos	5942
Gallup	6953
Greenhorn	7659
Dakota Formation	7825
Paguate Member-Dakota	7835
Cubero Member-Dakota	7871
Oak Canyon Member-Dakota	7919
Encinal Canyon Member-Dakota	7945
Burro Canyon	8002
Morrison	8043

DEPTH	DEGREE DEVIATION	DEPTH	DEGREE DEVIATION
169	1	2259	1-1/4
303	3/4	2855	3/4
820	1-3/4	3327	2-1/2
1289	1	8327	1
1759	3/4		

### LOS PINOS;FRT SND PC,SOUTH

3373-3430 0.34", 20 holes  
2500 bbls Delta 140 with 206,263 # 20/40 Brady Sand

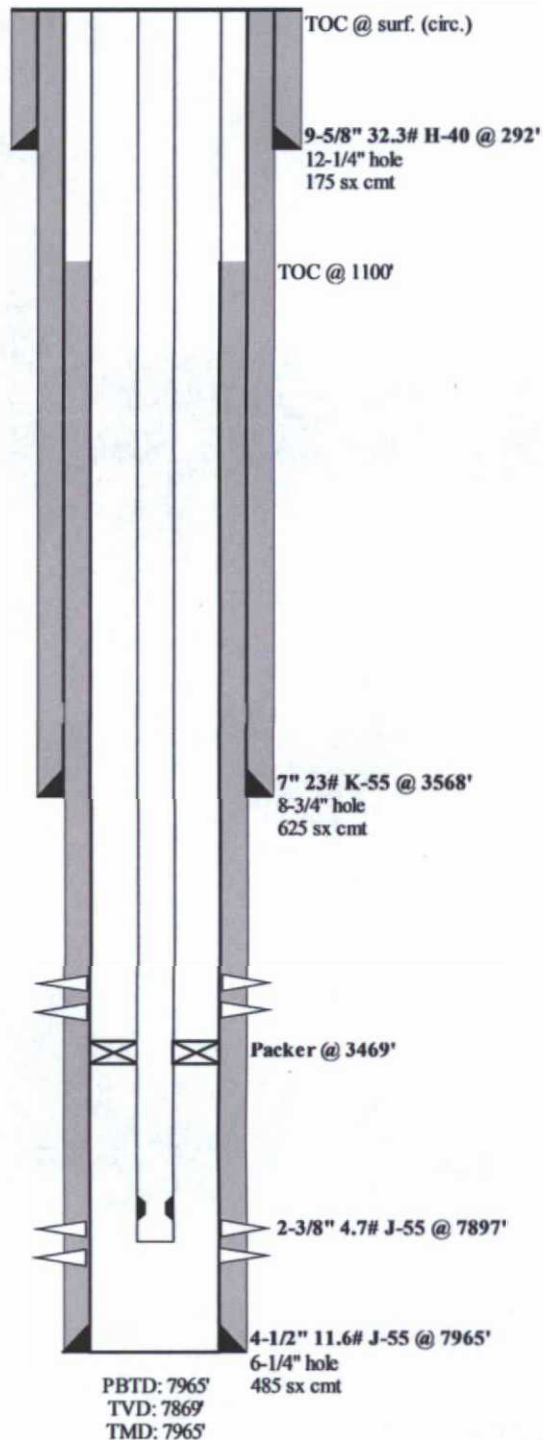
### Dakota Perforation

7844-7942 0.34" 21 holes  
1330 bbls Delta 200 with 55,685 # 20/40 Ottawa Sand

### History

4/27/2006 Spudded well.

6333' GL  
KB: ~14'





# Proposed WBD



**NEBU 68M**  
PC/DK  
API # 30-045-33474  
Unit A - Sec. 35 - T31N - R07W  
San Juan, New Mexico

## Formation Tops

Ojo Alamo	2286
Kirtland	2398
Fruitland	2854
Pictured Cliffs	3368
Lewis	3467
Cliff House	5290
Menefee	5330
Point Lookout	5628
Mancos	5942
Gallup	6953
Greenhorn	7659
Dakota Formation	7825
Paguate Member-Dakota	7835
Cubero Member-Dakota	7871
Oak Canyon Member-Dakota	7919
Encinal Canyon Member-Dakota	7945
Burro Canyon	8002
Morrison	8043

DEPTH	DEGREE DEVIATION	DEPTH	DEGREE DEVIATION
189	1	2259	1-1/4
303	3/4	2855	3/4
820	1-3/4	3327	2-1/2
1289	1	8327	1
1759	3/4		

## LOS PINOS;FRT SND PC,SOUTH

3373-3430 0.34", 20 holes  
2500 bbls Delta 140 with 206,263 # 20/40 Brady Sand

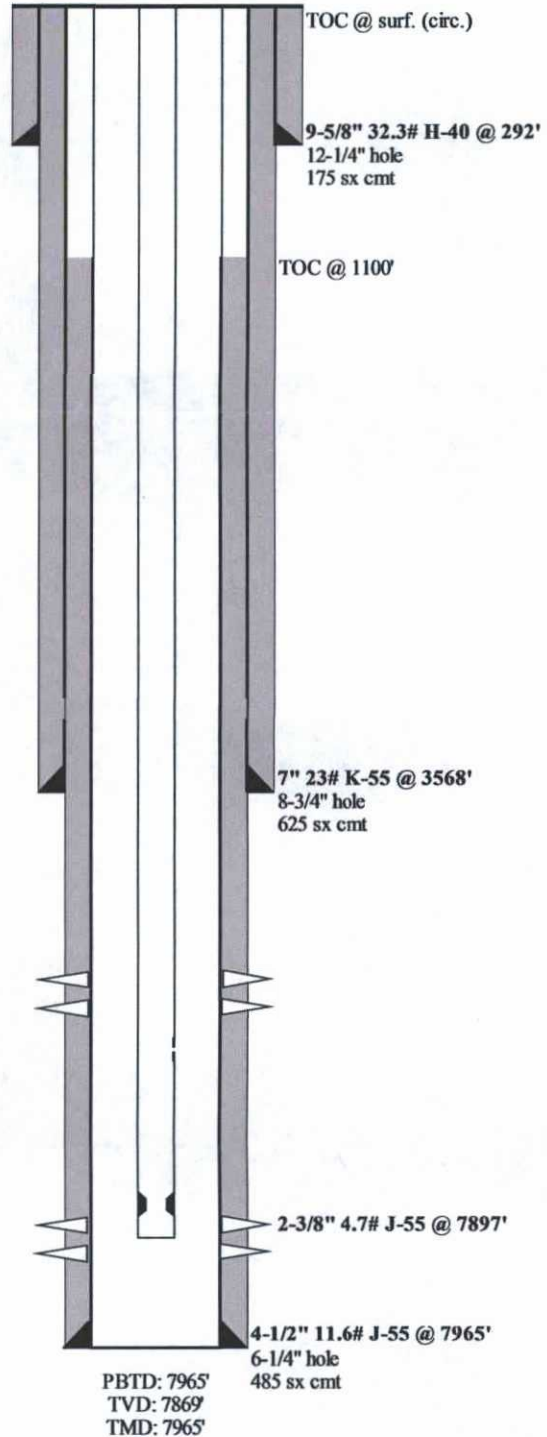
## Dakota Perforation

7844-7942 0.34" 21 holes  
1330 bbls Delta 200 with 55,685 # 20/40 Ottawa Sand

## History

4/27/2006 Spudded well.

6333' GL  
KB: ~14'



**District I**

1625 N. French Dr., Hobbs, NM 88240

**District II**

1301 W. Grand Avenue, Artesia, NM 88210

**District III**

1000 Rio Brazos Rd., Aztec, NM 87410

**District IV**

1220 S. St. Francis Dr., Santa Fe, NM 87505

State of New Mexico  
Energy, Minerals & Natural Resources Department  
**OIL CONSERVATION DIVISION**  
1220 South St. Francis Dr.  
Santa Fe, NM 87505

Form C-102

Revised July 16, 2010

Submit one copy to appropriate

District Office

☐ AMENDED REPORT**WELL LOCATION AND ACREAGE DEDICATION PLAT**

<sup>1</sup> API Number <b>30-045-33474</b>	<sup>2</sup> Pool Code <b>71599</b>	<sup>3</sup> Pool Name <b>Basin Dakota</b>
<sup>4</sup> Property Code <b>013325</b>	<sup>5</sup> Property Name <b>Northeast Blanco Unit</b>	
<sup>7</sup> OGRID No. <b>000778</b>	<sup>8</sup> Operator Name <b>BP America Production Company</b>	
		<sup>6</sup> Well Number <b>68M</b>
		<sup>9</sup> Elevation <b>6333</b>

**<sup>10</sup> Surface Location**

UL or lot no. <b>A</b>	Section <b>35</b>	Township <b>31N</b>	Range <b>07W</b>	Lot Idn	Feet from the <b>500</b>	North/South line <b>North</b>	Feet from the <b>1205</b>	East/West line <b>East</b>	County <b>San Juan</b>
---------------------------	----------------------	------------------------	---------------------	---------	-----------------------------	----------------------------------	------------------------------	-------------------------------	---------------------------

**<sup>11</sup> Bottom Hole Location If Different From Surface**

UL or lot no. <b>B</b>	Section <b>35</b>	Township <b>31N</b>	Range <b>07W</b>	Lot Idn	Feet from the <b>951</b>	North/South line <b>North</b>	Feet from the <b>1811</b>	East/West line <b>East</b>	County <b>San Juan</b>
<sup>12</sup> Dedicated Acres <b>320</b>	<sup>13</sup> Joint or Infill	<sup>14</sup> Consolidation Code		<sup>15</sup> Order No. <b>DHC 4724-A</b>					

No allowable will be assigned to this completion until all interests have been consolidated or a non-standard unit has been approved by the division.

<b>16</b>			<b><sup>17</sup> OPERATOR CERTIFICATION</b>
			<p><i>I hereby certify that the information contained herein is true and complete to the best of my knowledge and belief, and that this organization either owns a working interest or unleased mineral interest in the land including the proposed bottom hole location or has a right to drill this well at this location pursuant to a contract with an owner of such a mineral or working interest, or to a voluntary pooling agreement or a compulsory pooling order heretofore entered by the division.</i></p> <p><i>Toya Colvin</i>      3/24/14 Signature      Date</p> <p>Toya Colvin Printed Name</p> <p>Toya.Colvin@bpc.com E-mail Address</p>
			<b><sup>18</sup> SURVEYOR CERTIFICATION</b>
			<p><i>I hereby certify that the well location shown on this plat was plotted from field notes of actual surveys made by me or under my supervision, and that the same is true and correct to the best of my belief.</i></p> <p>Date of Survey _____ Signature and Seal of Professional Surveyor: _____</p> <p style="text-align: center;">Previously Filed</p> <p>Certificate Number _____</p>

District I

1625 N. French Dr., Hobbs, NM 88240

District II

1301 W. Grand Avenue, Artesia, NM 88210

District III

1000 Rio Brazos Rd., Aztec, NM 87410

District IV

1220 S. St. Francis Dr., Santa Fe, NM 87505

State of New Mexico  
Energy, Minerals & Natural Resources Department  
**OIL CONSERVATION DIVISION**  
1220 South St. Francis Dr.  
Santa Fe, NM 87505

Form C-102

Revised July 16, 2010

Submit one copy to appropriate

District Office

☐ AMENDED REPORT**WELL LOCATION AND ACREAGE DEDICATION PLAT**

<sup>1</sup> API Number 30-045-33474	<sup>2</sup> Pool Code 80690	<sup>3</sup> Pool Name Los Pinos; Frt Snd PC, South
<sup>4</sup> Property Code 013325	<sup>5</sup> Property Name Northeast Blanco Unit	<sup>6</sup> Well Number 68M
<sup>7</sup> OGRID No. 000778	<sup>8</sup> Operator Name BP America Production Company	<sup>9</sup> Elevation 6333

<sup>10</sup> Surface Location

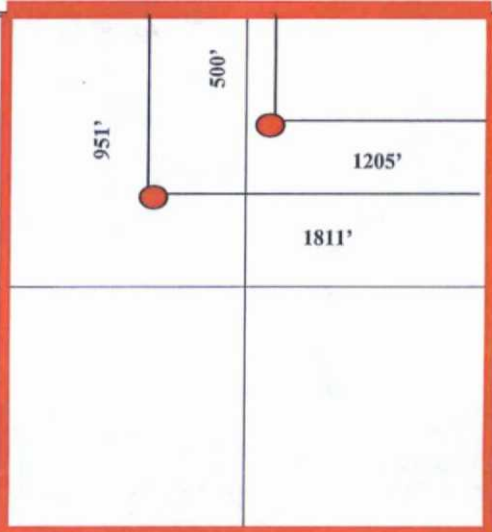
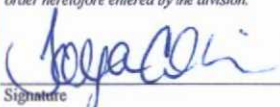
UL or lot no. A	Section 35	Township 31N	Range 07W	Lot Idn	Feet from the 500	North/South line North	Feet from the 1205	East/West line East	County San Juan
--------------------	---------------	-----------------	--------------	---------	----------------------	---------------------------	-----------------------	------------------------	--------------------

<sup>11</sup> Bottom Hole Location If Different From Surface

UL or lot no. B	Section 35	Township 31N	Range 07W	Lot Idn	Feet from the 951	North/South line North	Feet from the 1811	East/West line East	County San Juan
--------------------	---------------	-----------------	--------------	---------	----------------------	---------------------------	-----------------------	------------------------	--------------------

<sup>12</sup> Dedicated Acres 160	<sup>13</sup> Joint or Infill	<sup>14</sup> Consolidation Code	<sup>15</sup> Order No. DHC 4724-A
--------------------------------------	-------------------------------	----------------------------------	---------------------------------------

No allowable will be assigned to this completion until all interests have been consolidated or a non-standard unit has been approved by the division.

<sup>16</sup>		<sup>17</sup> <b>OPERATOR CERTIFICATION</b> <i>I hereby certify that the information contained herein is true and complete to the best of my knowledge and belief, and that this organization either owns a working interest or unleased mineral interest in the land including the proposed bottom hole location or has a right to drill this well at this location pursuant to a contract with an owner of such a mineral or working interest, or to a voluntary pooling agreement or a compulsory pooling order heretofore entered by the division.</i>  3/24/10 Signature Date Tova Colvin Printed Name Tova.Colvin@bp.com E-mail Address
		<sup>18</sup> <b>SURVEYOR CERTIFICATION</b> <i>I hereby certify that the well location shown on this plat was plotted from field notes of actual surveys made by me or under my supervision, and that the same is true and correct to the best of my belief.</i>
		Date of Survey Signature and Seal of Professional Surveyor:  Previously Filed
		Certificate Number