

UNITED STATES
DEPARTMENT OF THE INTERIOR
BUREAU OF LAND MANAGEMENTFORM APPROVED
OMB NO. 1004-0135
Expires: July 31, 2010**SUNDRY NOTICES AND REPORTS ON WELLS**
*Do not use this form for proposals to drill or to re-enter an abandoned well. Use form 3160-3 (APD) for such proposals.***SUBMIT IN TRIPLICATE - Other instructions on reverse side.**5. Lease Serial No.
NMSF078977
6. If Indian, Allottee or Tribe Name

7. If Unit or CA/Agreement, Name and/or No.

8. Well Name and No.
DEWEY 19. API Well No.
30-045-34323-00-S110. Field and Pool, or Exploratory
BASIN FRUITLAND COAL11. County or Parish, and State
SAN JUAN COUNTY, NM1. Type of Well
☐ Oil Well ☐ Gas Well ☒ Other: COAL BED METHANE2. Name of Operator
MCELVAIN ENERGY, INC
Contact: TONY G COOPER
E-Mail: tony.cooper@mcelvain.com3a. Address
1050 17TH STREET STE 2500
DENVER, CO 802653b. Phone No. (include area code)
Ph: 303-893-0933 Ext: 3314. Location of Well (Footage, Sec., T., R., M., or Survey Description)
Sec 19 T30N R13W NENE 760FNL 1095FEL

12. CHECK APPROPRIATE BOX(ES) TO INDICATE NATURE OF NOTICE, REPORT, OR OTHER DATA

TYPE OF SUBMISSION	TYPE OF ACTION			
<input checked="" type="checkbox"/> Notice of Intent	<input type="checkbox"/> Acidize	<input type="checkbox"/> Deepen	<input type="checkbox"/> Production (Start/Resume)	<input type="checkbox"/> Water Shut-Off
<input type="checkbox"/> Subsequent Report	<input type="checkbox"/> Alter Casing	<input type="checkbox"/> Fracture Treat	<input type="checkbox"/> Reclamation	<input type="checkbox"/> Well Integrity
<input type="checkbox"/> Final Abandonment Notice	<input type="checkbox"/> Casing Repair	<input type="checkbox"/> New Construction	<input type="checkbox"/> Recomplete	<input type="checkbox"/> Other
	<input type="checkbox"/> Change Plans	<input type="checkbox"/> Plug and Abandon	<input checked="" type="checkbox"/> Temporarily Abandon	
	<input type="checkbox"/> Convert to Injection	<input type="checkbox"/> Plug Back	<input type="checkbox"/> Water Disposal	

13. Describe Proposed or Completed Operation (clearly state all pertinent details, including estimated starting date of any proposed work and approximate duration thereof. If the proposal is to deepen directionally or recompleat horizontally, give subsurface locations and measured and true vertical depths of all pertinent markers and zones. Attach the Bond under which the work will be performed or provide the Bond No. on file with BLM/BIA. Required subsequent reports shall be filed within 30 days following completion of the involved operations. If the operation results in a multiple completion or recompleat in a new interval, a Form 3160-4 shall be filed once testing has been completed. Final Abandonment Notices shall be filed only after all requirements, including reclamation, have been completed, and the operator has determined that the site is ready for final inspection.)

McElvain Energy Inc. (MEI) respectfully requests the approval to conduct a MIT and seek a well status of temporarily abandoned for the Ora #8 gas well in Rio Arriba County, NM. This Federal lease continues to be held by production of active and producing wells.

As the Basin Mancos play continues in the SJB the potential for future completion activity in this wellbore exists. If granted temporary abandonment status MEI will perform the requisite MIT as soon as this NOI is approved by the FFO. See proposed MIT procedure below.

TA Procedure: Attached

Notify NMOCD

OIL CONS. DIV DIST. 3

Notify NMOCD 24 hr
prior to beginning
operations
MK

24 hours

FEB 29 2016

prior to MIT

14. I hereby certify that the foregoing is true and correct.

Electronic Submission #331050 verified by the BLM Well Information System
For MCELVAIN ENERGY, INC, sent to the Farmington
Committed to AFMSS for processing by JACK SAVAGE on 02/25/2016 (16JWS0099SE)

Name (Printed/Typed) JIM MCKINNEY

Title SR. OPERATIONNS ENGINEER

Signature (Electronic Submission)

Date 02/08/2016

THIS SPACE FOR FEDERAL OR STATE OFFICE USE

Approved By JACK SAVAGE

Title PETROLEUM ENGINEER

Date 02/25/2016

Conditions of approval, if any, are attached. Approval of this notice does not warrant or certify that the applicant holds legal or equitable title to those rights in the subject lease which would entitle the applicant to conduct operations thereon.

Office Farmington

Title 18 U.S.C. Section 1001 and Title 43 U.S.C. Section 1212, make it a crime for any person knowingly and willfully to make to any department or agency of the United States any false, fictitious or fraudulent statements or representations as to any matter within its jurisdiction.

** BLM REVISED ** BLM REVISED ** BLM REVISED ** BLM REVISED ** BLM REVISED **

NMOCD

5

McELVAIN OIL & GAS PROPERTIES, INC.

Dewey #1

Pictured Cliffs T&A Procedure

February, 2016

LOCATION:

"A" NENE Sec 19, T30N, R13W

760' FNL & 1,095' FEL San Juan, NM

API: 05-045-34323

TD: 1,565'

PBTD: 1,486'

KB: 5,610'

GL: 5,605'

PURPOSE of WORK: Temporarily Abandon the Pictured Cliffs Formation

CASING:

8 5/8", 24#, J-55 @ 504' in 12 1/4" hole

Cemented with 380 sxs (79.9 bbls) Class "A" + 3% CaCl + 1/4 #/sk Flakes

15.6 ppg Yield: 1.18 cuft/sk

Circulated ?? bbls to surface

Superior

5 1/2", 15.5#, J-55 @ 1,542' in 7 7/8" hole

Lead: 65 sxs (21.9 bbls) 65/35 Std Poz + 6% Gel + 5# gilsonite + 1/4 #/sk Flakes

12.4 ppg Yield: 1.89 cuft/sk

Tail: 180 sx (40 bbls) Std Cement + 5# Gilsonite + 1/4 #/sk Flakes

15.2 ppg Yield: 1.25 cuft/sk

Circulated 10 bbls to Surface

Superior

FORMATION TOPS:

Ojo Alamo

Kirtland

Fruitland

Pictured Cliffs

721'
1,171'
1,385'

PERFORATIONS:

Fruitland Coal 0.43" Perforated Interval

1,250'	1,252'	3'	spf	12 shots
1,290'	1,296'	7'	4 spf	28 shots

Fruitland Coal 0.43" Perforated Interval

1,370'	1,378'	9'	4 spf	36 shots
--------	--------	----	-------	----------

PROCEDURE:

1. MI & RUSU.
2. Unseat pump.
3. TOH and LD 3/4" rods, K-bars and pump.
4. NU BOPs
5. TOH standing back 2-7/8" tubing, SN, perforated sub and mud anchor.
6. MU bit, 5-1/2" casing scraper, bit sub and SN.
7. TIH with bit and scraper to PBTD at 1,486'.
8. Circulate hole clean and
9. TOH and LD 2-7/8" tubing SN, bit sub, scraper and bit.
10. MIRU Blue Jet.
11. MU and TIH with 5K CIBP, setting toll and CCL to 1,200'.
12. Set CIBP at 1,200' and TOH with WLU and RDMO.
13. Load hole with 2% KCL working air out of casing.
14. Pressure test casing and CIBP to 1,000 psi for 30 minutes.
15. ND BOPE, NU WH.
16. RDMO rig.
17. Perform MIT test with appropriate Regulatory personnel on location.

WELL HISTORY:

11/13/2007 - Drilled 12-1/4" hole to 515'. Ran 12 jts 8-5/8", 24# casing and landed at 504'. Cemented with 380 sks STD Neat w/3% CaCl & 1/4# flakes @ 15.6 lb/gal, 1.18 cuft/sk. TD'd 7-7/8" hole at 1565' and ran 37 jts 5-1/2", 15.5#, J-55 casing. Cemented with 65 sks 65/35 Poz containing 6% gel, 5# gilsonite, & 1/4# flakes followed by 180 sks STD containing 5# gilsonite & 1/4# flakes. Circulated 10 bbls to surface. RDMO rotary tools 11/19/07.

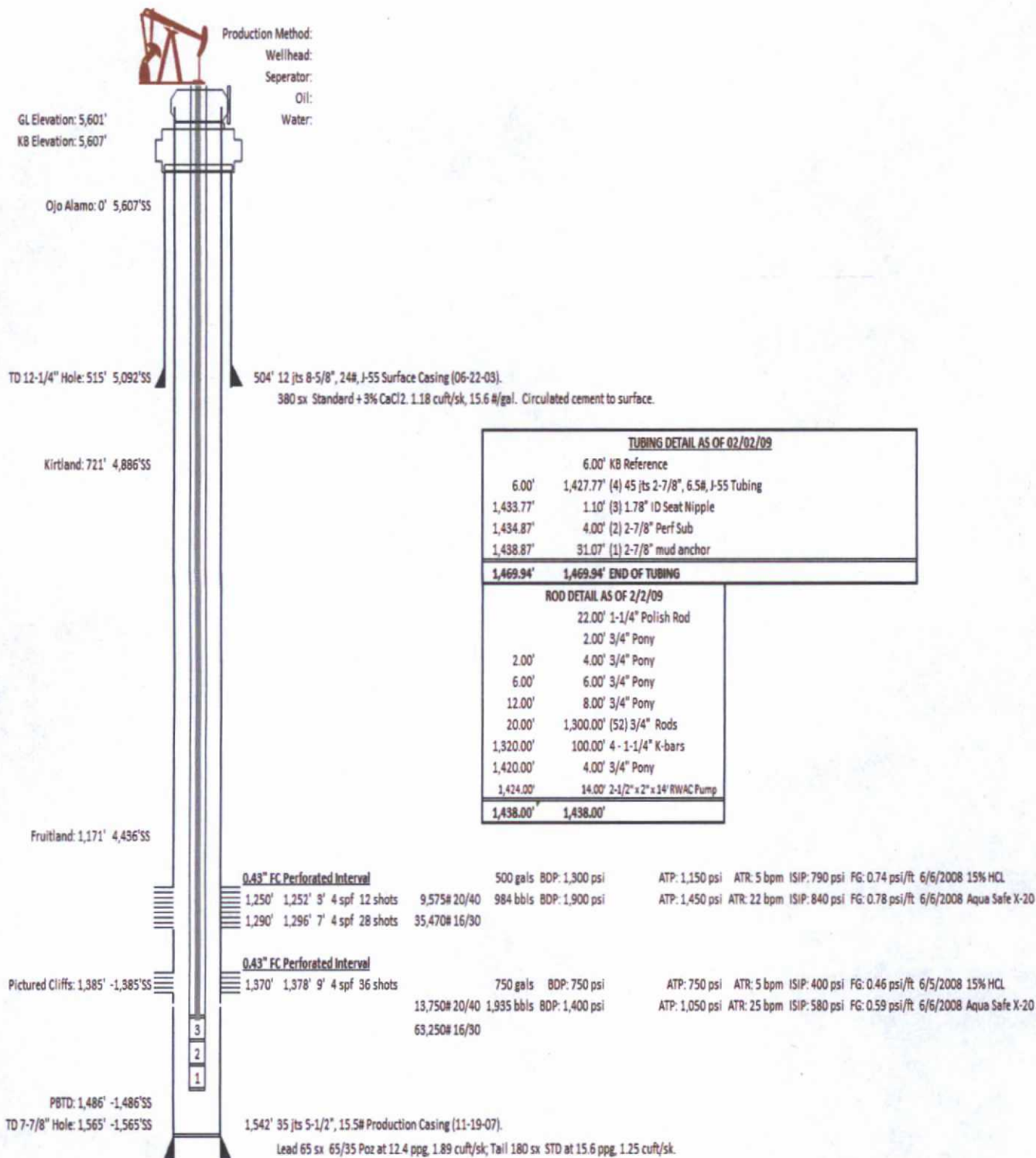
6/4/08 - MIRU Professional Well Service. Tested csg to 3000 psi. Held. Perforated 1370 - 1378' 4 JSPF 36 - 0.43" holes. Acidized with 750 gals 15% HCL + additives. Frac'd with 1932 bbls Aqua Safe X20 containing 137.5 sks 20/40, 440 sks 16/30 Brady, and 192.5 sks 16/30 SLC. Avg rate: 25 bpm @ 990 psi. ISIP: 580 psi.

Perforated 1250 - 1252' & 1290 - 1296' 4 JSPF 40 - 0.43" holes. Acidized w/500 gal 15% HCL. Frac'd with 984 bbls Aqua Safe X20 containing 95.75 sks 20/40, 242 sks 16/30 Brady, and 112.7 sks 16/30 SLC. Avg rate: 22 BPM @ 1430 PSI. ISIP: 840 psi.

Ran 2-7/8", 6.5# tubing and landed at 1460'. Swabbed 8 days and recovered 2716 bbls of 2916 bbl load. RIH with 2.5"X2"X14' RWAC pump, 4 - 1.25" K-bars, 52 - 3/4" rods, 1 - 8', 6', 4', and 2' pony rods. Installed 22'X1.25" polish rod with liner.

2/2/09 - Pulled rods and pump. Pump screen scaled up restricting flow into pump. Tagged PBTD @ 1485.7'. Pulled tubing and noted bottom 5 jts of tubing covered inside and out with heavy scale. Perforated sub almost completely plugged. Replaced SN and perf sub and landed tubing at 1470'. Repaired pump and re-ran as pulled.

WELLBORE SCHEMATIC:



BLM CONDITION OF APPROVAL

CASING REPAIR, WORKOVER AND RECOMPLETION OPERATIONS:

1. If casing repair operations are needed, obtain prior approval from this office before commencing repairs. If a CBL or other logs are run, provide this office with a copy.
2. After any casing repair operations, test cement squeeze to a minimum of 500# for 30 minutes with no more than 10 % pressure fall off in the 30 minute test period. Provide test chart with your subsequent report of operations
3. A properly functioning BOP and related equipment must be installed prior to commencing workover, casing repair, and/or recompletion operations.
4. **Contact this office at (505) 564-7750 prior to conducting any cementing operations**

SPECIAL STIPULATIONS:

1. **Pits will be fenced during work-over operation.**
2. **All disturbance will be kept on existing pad.**
3. **All pits will be pulled and closed immediately upon completion of the recompletion and work-over activities.**
4. **Pits will be lined with an impervious material at least 12 mils thick.**