

# NE CHACO COM #912H CHACO UNIT NE HZ OIL (page 1)

Spud: 7/7/15

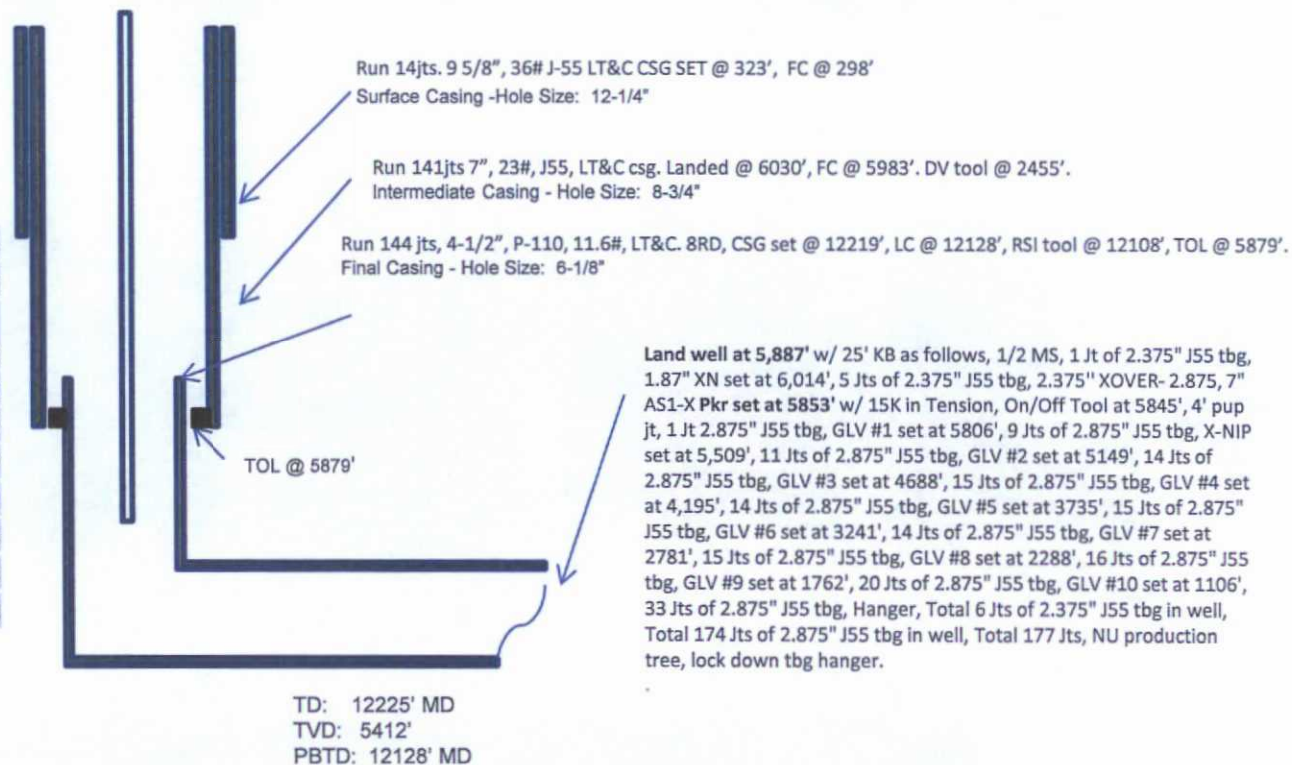
Completed: 1/26/16

SHL: 2425' FNL & 231' FWL  
SW/4 NW/4 Section 5(E), T23N, R6W

BHL: 792' FNL & 337' FEL  
NE/4 NE/4 Section 8 (A), T23N, R6W

RIO ARRIBA NM  
Elevation: 6882  
API: 30-039-31298

OJO ALAMO	1492	1483
KIRTLAND	1778	1756
PICTURE		
CLIFFS	2118	2080
LEWIS	2226	2182
CHACRA	2590	2525
CLIFF HOUSE	3744	3617
MENEFEE	3770	3642
PT LOOKOUT	4511	4346
MANCOS	5171	4988
GALLUP	5435	5208



HOLE SIZE	CASING	CEMENT	VOLUME	CMT TOP
12-1/4"	9-5/8"	101 sx	162.24 cu.ft.	Surface
8-3/4"	7"	845 sx	1404.62 cu.ft.	Surface
6-1/8"	4-1/2"	675 sx	864 cu. ft.	TOL 5789'

CONFIDENTIAL

OIL CONS. DIV DIST. 3

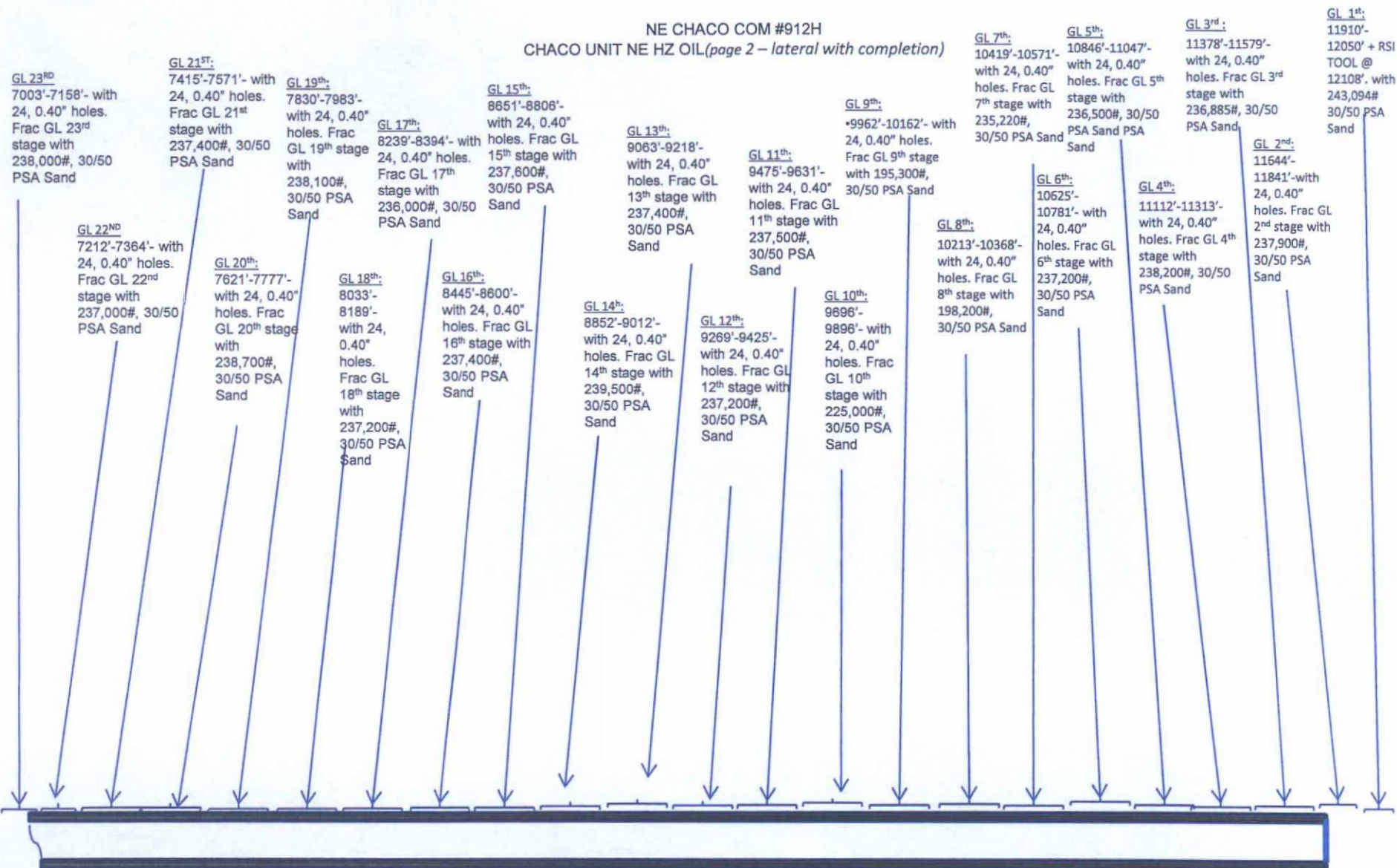
FEB 03 2016

LG 1/28/16

PV

3

NE CHACO COM #912H  
CHACO UNIT NE HZ OIL (page 2 – lateral with completion)



See page 1 for upper portion of hole

# NE CHACO COM #912H CHACO UNIT NE HZ OIL

## GL 27<sup>th</sup>:

6116'-6320'- with  
24, 0.40" holes.  
Frac GL 27<sup>th</sup> stage  
with 223,080#,  
30/50 PSA Sand

## GL 26<sup>th</sup> :

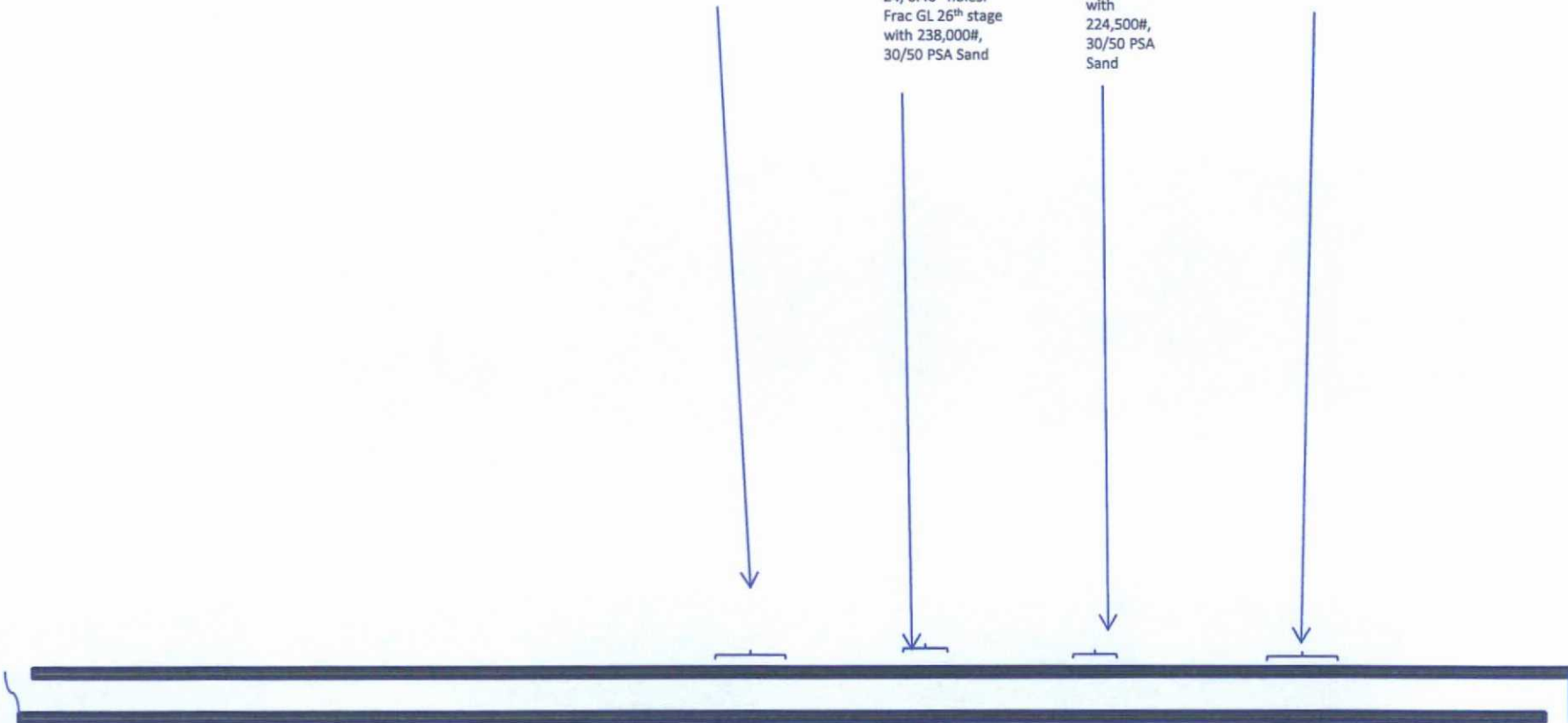
6385'-6540'- with  
24, 0.40" holes.  
Frac GL 26<sup>th</sup> stage  
with 238,000#,  
30/50 PSA Sand

## GL 25<sup>th</sup> :

6591'-6746'-  
with 24, 0.40"  
holes. Frac GL  
25<sup>th</sup> stage  
with  
224,500#,  
30/50 PSA  
Sand

## GL 24<sup>th</sup> :

6797'-6952'-  
with 24,  
0.40" holes.  
Frac GL 24<sup>th</sup>  
stage with  
237,000#,  
30/50 PSA  
Sand



See page 1 for upper portion of hole