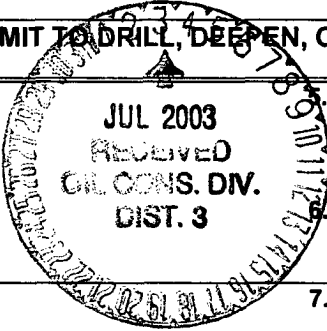


UNITED STATES  
DEPARTMENT OF THE INTERIOR  
BUREAU OF LAND MANAGEMENT

APPLICATION FOR PERMIT TO DRILL, DEEPEN, OR PLUG BACK

RECEIVED



APR 29 PM 1:54  
Farmington, NM

1a.	Type of Work DRILL	Lease Number NMNM-0558139
		Unit Reporting Number
1b.	Type of Well GAS	If Indian, All. or Tribe
2.	Operator <b>BURLINGTON</b> RESOURCES OIL & GAS COMPANY LP	7. Unit Agreement Name
3.	Address & Phone No. of Operator PO Box 4289, Farmington, NM 87499  (505) 326-9700	8. Farm or Lease Name Creek
		9. Well Number 100
4.	Location of Well 1955' FNL, 1515' FEL  Latitude 36° 45.2, Longitude 107° 21.3	10. Field, Pool, Wildcat Basin Fruitland Coal
		11. Sec., Twn, Rge, Mer. (NMPM) G Sec. 4, T-29-N, R-5-W API # 30-039-27442
14.	Distance in Miles from Nearest Town 8 miles from Gobernador	12. County Rio Arriba
		13. State NM
15.	Distance from Proposed Location to Nearest Property or Lease Line 1515'	
16.	Acres in Lease	17. Acres Assigned to Well 322.08 E/2
18.	Distance from Proposed Location to Nearest Well, Drig, Compl, or Applied for on this Lease 20'	
19.	Proposed Depth 3444'	20. Rotary or Cable Tools Rotary
	<b>Drilling operations authorized are subject to compliance with attached "General Requirements".</b>	
21.	Elevations (DF, FT, GR, Etc.) 6343' GR	22. Approx. Date Work will Start
23.	Proposed Casing and Cementing Program See Operations Plan attached	<b>This action is subject to technical and procedural review pursuant to 43 CFR 3165.8 and appeal pursuant to 43 CFR 3165.4</b>
24.	Authorized by: <u><i>Jerry Cole</i></u> Regulatory/Compliance Supervisor	<u>4-24-03</u> Date

PERMIT NO. 1a/ Jim Lovato APPROVAL DATE \_\_\_\_\_  
APPROVED BY \_\_\_\_\_ TITLE \_\_\_\_\_ DATE JUN 30 2003

Archaeological Report to be submitted  
Threatened and Endangered Species Report to be submitted  
NOTE: This format is issued in lieu of U.S. BLM Form 3160-3  
Title 18 U.S.C. Section 1001, makes it a crime for any person knowingly and willfully to make to any department or agency of the United States any false, fictitious or fraudulent statements or presentations as to any matter within its jurisdiction.

NRMOCD

District II  
PO Drawer DD, Artesia, NM 88211-0719

Instructions on back  
Submit to Appropriate District Office  
State Lease - 4 Copies  
Fee Lease - 3 Copies

OIL CONSERVATION DIVISION  
PO Box 2088  
Santa Fe, NM 87504-2088

District III  
1000 Rio Brazos Rd., Aztec, NM 87410

RECEIVED  
AMENDED REPORT

District IV  
PO Box 2088, Santa Fe, NM 87504-2088

2003 MAY 29 PM 1:54

WELL LOCATION AND ACREAGE DEDICATION PLAT

*API Number 30-039-27442		*Pool Code 71629	*Pool Name Basin Fruitland Coal
*Property Code 18504	*Property Name CREEK		*Well Number 100
*GRID No. 14538	*Operator Name BURLINGTON RESOURCES OIL & GAS COMPANY, LP		*Elevation 6343'

<sup>10</sup> Surface Location

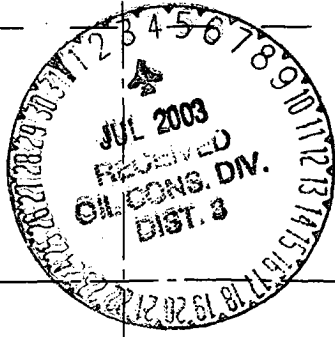
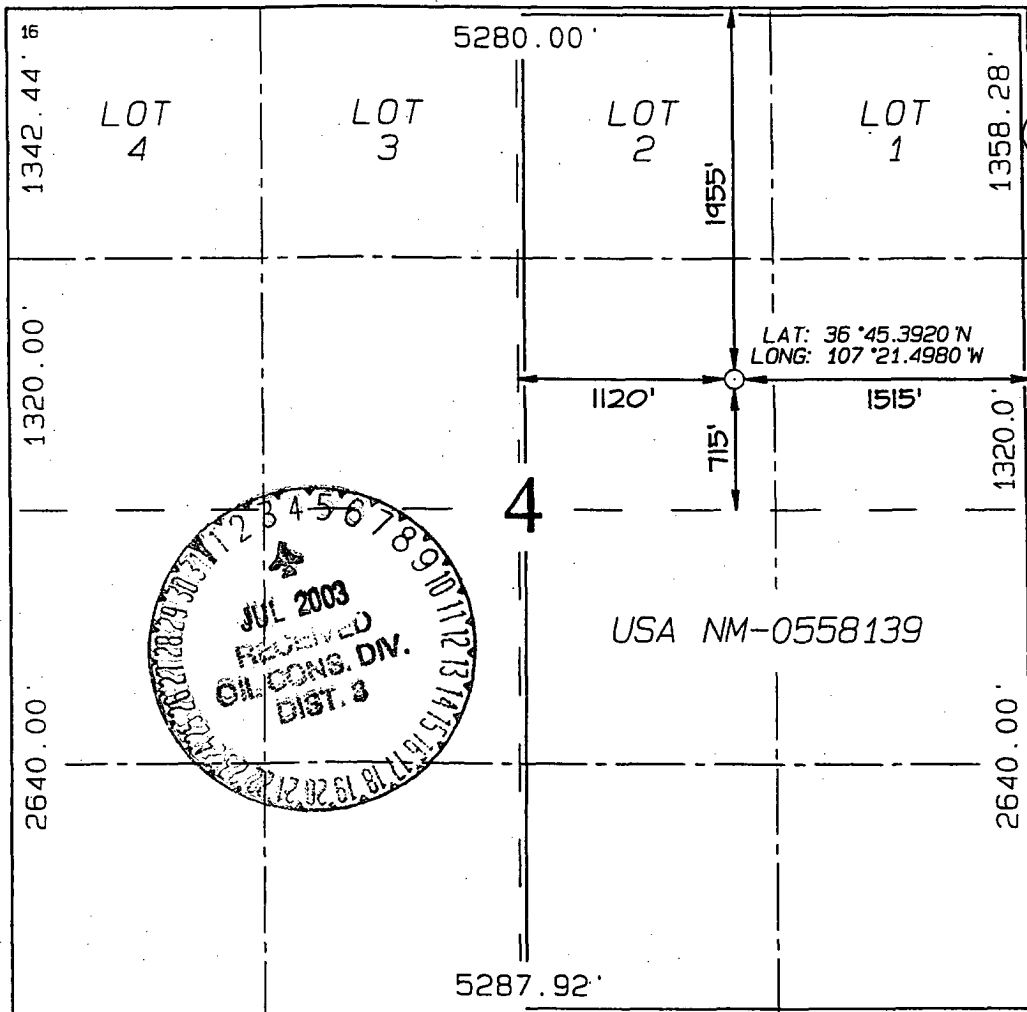
UL or lot no.	Section	Township	Range	Lot In	Feet from the	North/South line	Feet from the	East/West line	County
G	4	29N	5W		1955	NORTH	1515	EAST	RIO ARRIBA

<sup>11</sup> Bottom Hole Location If Different From Surface

UL or lot no.	Section	Township	Range	Lot In	Feet from the	North/South line	Feet from the	East/West line	County

<sup>12</sup> Dedicated Acres FTC-E/322.08	<sup>13</sup> Joint or Infill	<sup>14</sup> Consolidation Code	<sup>15</sup> Order No.
---	-------------------------------	----------------------------------	-------------------------

NO ALLOWABLE WILL BE ASSIGNED TO THIS COMPLETION UNTIL ALL INTERESTS HAVE BEEN CONSOLIDATED OR A NON-STANDARD UNIT HAS BEEN APPROVED BY THE DIVISION



<sup>17</sup> OPERATOR CERTIFICATION  
I hereby certify that the information contained herein is true and complete to the best of my knowledge and belief

*Peggy Cole*  
Signature

Peggy Cole  
Printed Name

Regulatory Supervisor  
Title

4-24-03  
Date

<sup>18</sup> SURVEYOR CERTIFICATION  
I hereby certify that the well location shown on this plat was plotted from field notes of actual surveys made by me or under my supervision, and that the same is true and correct to the best of my belief.

Survey Date: JANUARY 27, 2003

Signature and Seal of Professional Surveyor

JASON C. EDWARDS  
Certificate Number 15269

OPERATIONS PLAN

**Well Name:** Creek #100  
**Location:** 1955'FNL, 1515'FEL Section 4, T-29-N, R-5-W  
Latitude 36° 45.2, Longitude 107° 21.3  
Rio Arriba County, NM  
**Formation:** Basin Fruitland Coal  
**Elevation:** 6343'GL

<b>Formation:</b>	<b>Top</b>	<b>Bottom</b>	<b>Contents</b>
Surface	San Jose	2373'	
Ojo Alamo	2373'	2630'	aquifer
Kirtland	2630'	2985'	gas
Fruitland	2985'	3236'	gas
Base of Basal Coal	3236'	3244'	gas
Pictured Cliffs	3244'		gas
Total Depth	3444'		

**Logging Program:** CDL-GR from TD to surface.  
**Mudlog:** 2630-3236'  
**Coring Program:** none

**Mud Program:**

<u>Interval</u>	<u>Type</u>	<u>Weight</u>	<u>Vis.</u>	<u>Fluid Loss</u>
0- 120'	Spud	8.4-9.0	40-50	no control
120-3444'	Non-dispersed	8.4-9.5	30-60	no control

**Casing Program (as listed, the equivalent, or better):**

<u>Hole Size</u>	<u>Depth Interval</u>	<u>Csg. Size</u>	<u>Wt.</u>	<u>Grade</u>
8 3/4"	0' - 120'	7"	20.0#	J-55
6 1/4"	0' - 3444'	4 1/2"	10.5#	J-55

**Tubing Program:**

0' - 3444'      2 3/8"      4.7#      J-55

**Float Equipment:** 7" surface casing - saw tooth guide shoe.  
Centralizers will be run in accordance with Onshore Order #2.

4 1/2" production casing - guide shoe and self-fill float collar. Three centralizers run every fourth joint above shoe. Two turbolizing type centralizers - one below and one into the base of the Ojo Alamo @ 1076'. Standard centralizers thereafter every fourth joint up to the base of the surface pipe.

**Wellhead Equipment:** 7" x 4 1/2" x 2 3/8" x 11" 2000 psi xmas tree assembly.

**Cementing:**

7" surface casing - cement with 36 sx Class "B" Type III cement with 0.25 pps Celloflake and 3% calcium chloride (51 cu.ft. of slurry, 200% excess to circulate to surface). WOC 24 hours for pre-set holes or 8 hours for conventionally set holes before pressure testing or drilling out from under surface casing. Test casing to 600 psi/30 minutes.

4 1/2" production casing - lead w/190 sacks Premium Lite cement with 3% calcium chloride, 0.25 pps Celloflake, 5 pps LCM-1, 0.4% fluid loss, 0.4% sodium metasilicate. Tail with 90 sacks Type III cement with 1% calcium chloride, 0.25 pps Celloflake, 0.2% fluid loss (530 cu.ft., 50% excess to circulate to surface).

4 1/2" production casing alternative two stage: Stage collar 2895'. First stage: cement with w/61 sx Type III cmt w/1% calcium chloride, 0.25 pps Flocele, 0.2% fluid loss. Second stage: 209 sx Premium Lite cmt with 3% calcium chloride, 0.25 pps Flocele, 5 ps LCM-1, 0.4% fluid loss, 0.4% SMS (530 cu.ft., 50% excess to circulate to surface).

Note: If open hole logs are run, cement volumes will be based on 25% excess over caliper volumes.

**BOP and tests:**

Surface to TD - 11" 2000 psi (minimum) double gate BOP stack (Reference Figure #1). Prior to drilling out surface casing, test rams to 600#/30 min.

Completion - 7 1/6" 2000 psi (minimum) double gate BOP stack (Reference Figure #2). Prior to completion operations, test blind rams and casing to 1500 psi for 30 minutes; all pipe rams and casing to 1500 psi for 30 minutes each.

From surface to TD - choke manifold (Reference Figure #3).

Pipe rams will be actuated at least once each day and blind rams actuated once each trip to test proper functioning. An upper kelly cock valve with handle and drill string safety valves to fit each drill string will be maintained and available on the rig floor.

**Additional information:**

- \* The Fruitland Coal formation will be completed.
- \* Anticipated pore pressure for the Fruitland is 570 psi.
- \* This gas is dedicated.
- \* The east half of section 4 is dedicated to the Fruitland Coal.

Drilling Engineer:

James J. McCarthy Date: 5/29/03