

Submit 1 Copy To Appropriate District Office
District I - (575) 393-6161
1625 N. French Dr., Hobbs, NM 88240
District II - (575) 748-1283
811 S. First St., Artesia, NM 88210
District III - (505) 334-6178
1000 Rio Brazos Rd., Aztec, NM 87410
District IV - (505) 476-3460
1220 S. St. Francis Dr., Santa Fe, NM 87505

State of New Mexico
Energy, Minerals and Natural Resources

Form C-103
Revised July 18, 2013

OIL CONSERVATION DIVISION
1220 South St. Francis Dr.
Santa Fe, NM 87505

WELL API NO.
30-045-27285

5. Indicate Type of Lease
STATE ☐ FEE ☒

6. State Oil & Gas Lease No.

7. Lease Name or Unit Agreement Name

Northeast Blanco Unit

8. Well Number

469

9. OGRID Number

000778

10. Pool name or Wildcat
Basin Fruitland Coal

SUNDRY NOTICES AND REPORTS ON WELLS

(DO NOT USE THIS FORM FOR PROPOSALS TO DRILL OR TO DEEPEN OR PLUG BACK TO A DIFFERENT RESERVOIR. USE "APPLICATION FOR PERMIT" (FORM C-101) FOR SUCH PROPOSALS.)

1. Type of Well: Oil Well ☐ Gas Well ☒ Other

2. Name of Operator

BP America Production Company

3. Address of Operator

501 Westlake Park Blvd., Three Eldridge Place, 12.181A
Houston, TX 77079

4. Well Location

Unit Letter H: 1315 feet from the North line and 645 feet from the East line
Section 13 Township 30N Range 08W NMPM County San Juan

11. Elevation (Show whether DR, RKB, RT, GR, etc.)
6303'

12. Check Appropriate Box to Indicate Nature of Notice, Report or Other Data

NOTICE OF INTENTION TO:

PERFORM REMEDIAL WORK ☐ PLUG AND ABANDON ☐
TEMPORARILY ABANDON ☐ CHANGE PLANS ☐
PULL OR ALTER CASING ☐ MULTIPLE COMPL ☐
DOWNHOLE COMMINGLE ☐
CLOSED-LOOP SYSTEM ☒
OTHER: Deepen ☒

SUBSEQUENT REPORT OF:

REMEDIAL WORK ☐ ALTERING CASING ☐
COMMENCE DRILLING OPNS. ☐ P AND A ☐
CASING/CEMENT JOB ☐
OTHER: ☐

13. Describe proposed or completed operations. (Clearly state all pertinent details, and give pertinent dates, including estimated date of starting any proposed work). SEE RULE 19.15.7.14 NMAC. For Multiple Completions: Attach wellbore diagram of proposed completion or recompletion.

BP America Production Company respectfully requests to deepen the subject well

OIL CONS. DIV DIST. 3

Please see the attached procedure including wellbore diagrams and C-102 plat.

APR 29 2016

Spud Date:

03/28/1990

Rig Release Date:

I hereby certify that the information above is true and complete to the best of my knowledge and belief.

SIGNATURE Toya Colvin TITLE Regulatory Analyst DATE 04/25/2016

Type or print name Toya Colvin E-mail address: Toya.Colvin@bp.com PHONE: 281-366-7148

For State Use Only

APPROVED BY: [Signature] TITLE DEPUTY OIL & GAS INSPECTOR DATE 5/12/16
Conditions of Approval (if any): IV

*Must have mud logger present during drilling. Submit mud log for review prior to returning well to production.

If perforations are above or below existing perfs please file: c-104 and Completion Report to include new perfs before returning to production.

District I
1625 N. French Dr., Hobbs, NM 88240
District II
1301 W. Grand Avenue, Artesia, NM 88210
District III
1000 Rio Brazos Rd., Aztec, NM 87410
District IV
1220 S. St. Francis Dr., Santa Fe, NM 87505

State of New Mexico
Energy, Minerals & Natural Resources Department
OIL CONSERVATION DIVISION
1220 South St. Francis Dr.
Santa Fe, NM 87505

Form C-102
Revised July 16, 2010
Submit one copy to appropriate
District Office
☐ AMENDED REPORT

WELL LOCATION AND ACREAGE DEDICATION PLAT

| | | |
|--|--|---|
| ¹ API Number 30-045-27285 | ² Pool Code 71629 | ³ Pool Name Basin Fruitland Coal |
| ⁴ Property Code 013325 | ⁵ Property Name Northeast Blanco Unit | ⁶ Well Number 469 |
| ⁷ OGRID No. 000778 | ⁸ Operator Name BP America Production Company | ⁹ Elevation 6303 |

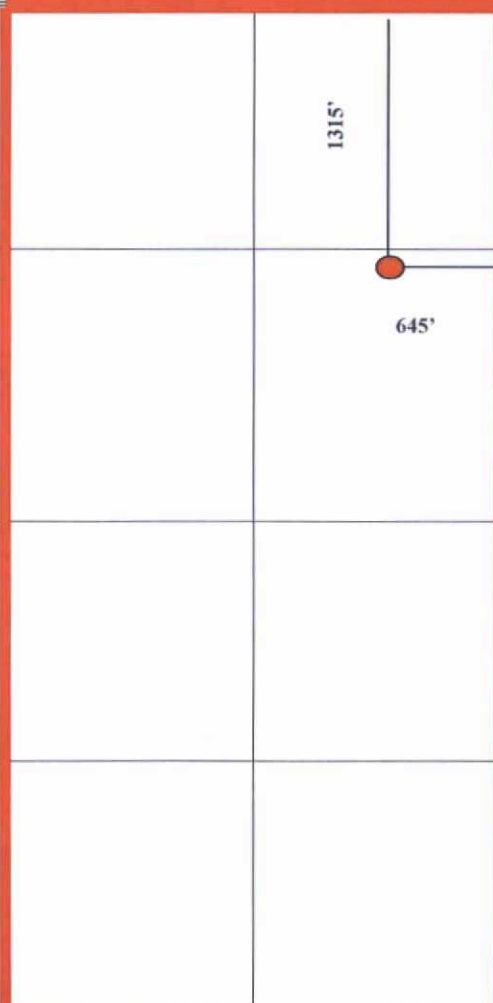
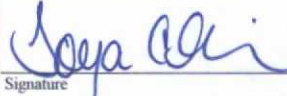
¹⁰ Surface Location

| | | | | | | | | | |
|---------------------------|----------------------|------------------------|---------------------|---------|------------------------------|----------------------------------|-----------------------------|-------------------------------|---------------------------|
| UL or lot no. H | Section 13 | Township 30N | Range 08W | Lot Idn | Feet from the 1315 | North/South line North | Feet from the 645 | East/West line East | County San Juan |
|---------------------------|----------------------|------------------------|---------------------|---------|------------------------------|----------------------------------|-----------------------------|-------------------------------|---------------------------|

¹¹ Bottom Hole Location If Different From Surface

| | | | | | | | | | |
|---|-------------------------------|----------------------------------|-------------------------|---------|---------------|------------------|---------------|----------------|--------|
| UL or lot no. | Section | Township | Range | Lot Idn | Feet from the | North/South line | Feet from the | East/West line | County |
| ¹² Dedicated Acres 320 | ¹³ Joint or Infill | ¹⁴ Consolidation Code | ¹⁵ Order No. | | | | | | |

No allowable will be assigned to this completion until all interests have been consolidated or a non-standard unit has been approved by the division.

| | | |
|---|---|--|
| ¹⁶ OIL CONS. DIV DIST. 3 APR 29 2016 |  | ¹⁷ OPERATOR CERTIFICATION <i>I hereby certify that the information contained herein is true and complete to the best of my knowledge and belief, and that this organization either owns a working interest or unleased mineral interest in the land including the proposed bottom hole location or has a right to drill this well at this location pursuant to a contract with an owner of such a mineral or working interest, or to a voluntary pooling agreement or a compulsory pooling order heretofore entered by the division.</i>  Signature Date 4/25/16 Tova Colvin Printed Name Tova.Colvin@bp.com E-mail Address |
| | | ¹⁸ SURVEYOR CERTIFICATION <i>I hereby certify that the well location shown on this plat was plotted from field notes of actual surveys made by me or under my supervision, and that the same is true and correct to the best of my belief.</i> Date of Survey Signature and Seal of Professional Surveyor: Previously Filed Certificate Number |

Northeast Blanco Unit 469

API # 30-045-27285-00

Location: H SEC. 13, T30N, R08W

San Juan County, New Mexico

Reason/Background for Job

The NEBU 469 was drilled and completed in the Fruitland coal in 1990. In order to maximize production by providing a "sump" from which to pump the liquids from the reservoir and ensuring the fluid level in the well stays below the coal seams, it is proposed to pull the existing liner, deepen the well, and run and perforate a new liner.

Basic Job Procedure

1. Pull tubing
2. Spear into and fish out liner
3. Deepen with new drill-down liner to TD of 3363'
4. Set liner hanger
5. Selectively perforate liner in the Fruitland coal
6. Run tubing
7. Run rods & pump
8. Return well to production

Current WBD



NEBU 469
Fruitland
API # 30-045-27285
Unit H - Sec. 13 - T30N - R08W
San Juan, New Mexico

Formation Tops

| | |
|-----------------|------|
| Fruitland | 3018 |
| Pictured Cliffs | 3213 |

Deviation Survey

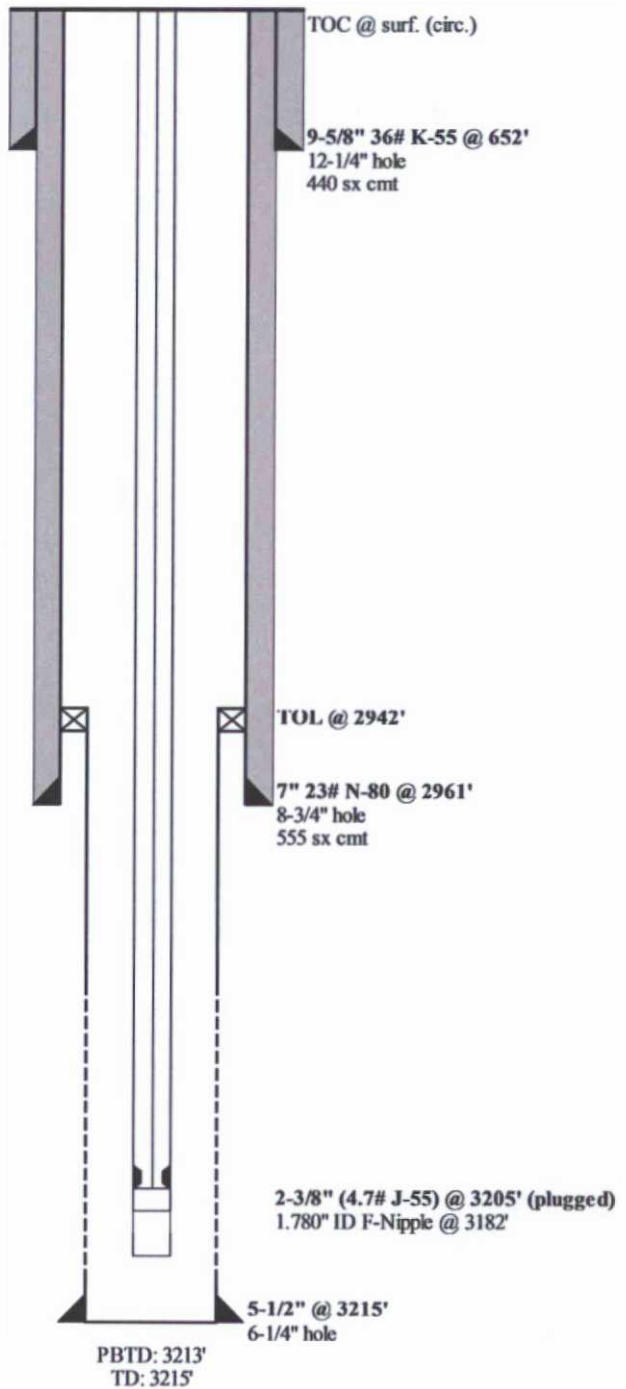
| MD | Inclination |
|------|-------------|
| 660 | 0.75 |
| 1158 | 1.00 |
| 1658 | 1.00 |
| 2157 | 1.00 |
| 2659 | 1.00 |
| 2968 | 0.75 |

Fruitland Perforations

| | |
|---------------|---------------|
| 3009' - 3133' | 8-hpf, 0.625" |
| 3154' - 3213' | 8-hpf, 0.625" |

| | |
|---------------|-------|
| 3015' - 3020' | 4 spf |
| 3040' - 3052' | 4 spf |
| 3058' - 3061' | 4 spf |
| 3064' - 3070' | 4 spf |
| 3076' - 3098' | 4 spf |
| 3110' - 3120' | 4 spf |
| 3125' - 3128' | 4 spf |
| 3150' - 3160' | 4 spf |
| 3195' - 3210' | 4 spf |

KB: 6317'
KB: 12'



Proposed WBD



NEBU 469
Fruitland
API # 30-045-27285
Unit H - Sec. 13 - T30N - R08W
San Juan, New Mexico

Formation Tops

| | |
|-----------------|------|
| Fruitland | 3018 |
| Pictured Cliffs | 3213 |

Deviation Survey

| MD | Inclination |
|------|-------------|
| 660 | 0.75 |
| 1158 | 1.00 |
| 1658 | 1.00 |
| 2157 | 1.00 |
| 2659 | 1.00 |
| 2968 | 0.75 |

Fruitland Perforations

| | |
|---------------|---------------|
| 3009' - 3133' | 8 hpf, 0.625" |
| 3154' - 3213' | 8 hpf, 0.625" |

| | |
|---------------|-------|
| 3015' - 3020' | 4-spf |
| 3040' - 3052' | 4-spf |
| 3058' - 3061' | 4-spf |
| 3064' - 3070' | 4-spf |
| 3076' - 3098' | 4-spf |
| 3110' - 3120' | 4-spf |
| 3125' - 3128' | 4-spf |
| 3150' - 3160' | 4-spf |
| 3195' - 3210' | 4-spf |

New perforations TBD

KB: 6317'
KB: 12'

