

District I (575) 393-6161
1625 N. French Dr., Hobbs, NM 88240
District II (575) 748-1283
811 S. First St., Artesia, NM 88210
District III (505) 334-6178
1000 Rio Brazos Road, Aztec, NM 87410
District IV (505) 827-8198
1220 S. St. Francis Dr., Santa Fe, NM 87505

State of New Mexico
Energy Minerals and Natural Resources

Oil Conservation Division
1220 South St. Francis Dr.
Santa Fe, NM 87505

Form C-106
Revised August 1, 2011

3-18 ACT Permit No.

NOTICE OF INTENTION TO UTILIZE AUTOMATIC CUSTODY TRANSFER EQUIPMENT

Operator WPX Energy Production, LLC

Address 721 S. Main, Aztec, NM 87410 County San Juan

Lease(s) to be served by this ACT Unit NMNM 135216X (West Lybrook Unit)

Pool(s) to be served by this ACT Unit Lybrook Mancos West (98157)

Location of ACT System: Unit O Section 8 Township 23N Range 8W

Order No. authorizing commingling between leases if more than one lease is to be served by this system.

R-14051 Date 9/8/2015

Order No. authorizing commingling between pools if more than one pool is to be served by this system

N/A Date N/A

Authorized transporter of oil from this system Whiptail Midstream, LLC

Transporter's address 15 West 6th Street, Tulsa, OK 74119

Maximum expected daily through-put for this system: 2,000 BBL/Day

If system fails to transfer oil due to malfunction or otherwise, waste by overflow will be averted by:

CHECK ONE: A. ☐ Automatic shut-down facilities B. ☒ Providing adequate available capacity to receive production
as required by 19.15.18.15.C(8) NMAC during maximum unattended time of lease operation
19.15.18.15.C(9) NMAC

If "A" above is checked, will flowing wells be shut-in at the header manifold or at the wellhead?

Maximum well-head shut-in pressure

If "B" above is checked, how much storage capacity is available above the normal high working level of the

surge tank 500 BBLs.

What is the normal maximum unattended time of lease operation? Sixteen (16) Hours.

What device will be used for measuring oil in this ACT unit?

CHECK ONE: ☐ Positive displacement meter ☐ Weir-type measuring vessel
☐ Positive volume metering chamber ☒ Other; describe Coriolis Meter

Remarks: This LACT will be selling to pipeline.

OPERATOR:

I hereby certify above information is true and complete to best of my knowledge and subject ACT system will be installed and operated in accordance with Rule 19.15.18.15 NMAC. Approval of this Form

C-106 does not eliminate necessity of an approved C-104 prior to running any oil or gas from this system.

Signature Andrea Felix

Printed Name & Title Andrea Felix, Regulatory Specialist, Sr.

E-mail Address

andrea.felix@wpxenergy.com

Date 6/7/2016

Telephone (505) 333-1849

OIL CONSERVATION DIVISION

Approved by: Branch Barrell

Title: DEPUTY OIL & GAS INSPECTOR
DISTRICT #3

Date: 6/21/16

INSTRUCTIONS: Submit one copy of Form C-106 with following attachments to appropriate district office.

- 1) Lease plat showing all wells which will be produced in ACT system.
- 2) Schematic diagram of battery and ACT equipment showing all major components and means employed to prove accuracy of measuring device.
- 3) Letter from transporter agreeing to utilization of ACT system as shown on schematic diagram.

**NOTICE OF INTENTION TO UTILIZE AUTOMATIC CUSTODY TRANSFER EQUIPMENT
WLU REMOTE #1 (REMOTE FACILITIES PAD 23-8-80)
PIPELINE LACT UNIT**

WELLS TO BE SERVED BY LACT UNIT:

- W LYBROOK UT #707H \ API #30-045-35739 / UNIT P (SE/SE) Sec. 12, T23N, R9W, NMPM ✓
- W LYBROOK UT #708H \ API #30-045-35740 / UNIT P (SE/SE) Sec. 12, T23N, R9W, NMPM ✓
- W LYBROOK UT #709H \ API #30-045-35741 / UNIT P (SE/SE) Sec. 12, T23N, R9W, NMPM ✓
- W LYBROOK UT #747H \ API #30-045-35742 / UNIT P (SE/SE) Sec. 12, T23N, R9W, NMPM ✓
- W LYBROOK UT #748H \ API #30-045-35743 / UNIT P (SE/SE) Sec. 12, T23N, R9W, NMPM ✓
- W LYBROOK UT #749H / API #30-045-35744 / UNIT P (SE/SE) Sec. 12, T23N, R9W, NMPM

19.15.18.15 AUTOMATIC CUSTODY TRANSFER EQUIPMENT:

A. Oil shall be received and measured in facilities of an approved design. The facilities shall permit the testing of each well at reasonable intervals and may be comprised of manually gauged, closed stock tanks for which the operator of the ACT system has prepared proper strapping tables, or of ACT equipment. The division shall permit ACT equipment's use only after the operator complies with the following. The operator shall file with the division form C-106 and receive approval for use of the ACT equipment prior to transferring oil through the ACT system. The carrier shall not accept delivery of oil through the ACT system until the division has approved form C-106.

- *Summary is attached to Form C-106 Notice of Intent to Utilize Automatic Custody Transfer Equipment*

B. The operator of the ACT system shall submit form C-106 to the appropriate division district office, which is accompanied by the following:

- (1) plat of the lease showing all wells that the any well operator will produce into the ACT system;

- *Attached as part of Form C-106 Notice of Intent*

(2) schematic diagram of the ACT equipment, showing on the diagram all major components such as surge tanks and their capacity, extra storage tanks and their capacity, transfer pumps, monitors, reroute valves, treaters, samplers, strainers, air and gas eliminators, back pressure valves and metering devices (indicating type and capacity, *i.e.* whether automatic measuring tank, positive volume metering chamber, weir-type measuring vessel or positive displacement meter); the schematic diagram shall also show means employed to prove the measuring device's accuracy; and

- *Attached as part of Form C-106 Notice of Intent*

- (3) letter from transporter agreeing to utilization of ACT system as shown on schematic diagram.

- *Attached as part of Form C-106 Notice of Intent*

C. The division shall not approve form C-106 unless the operator of the ACT system will install and operate the ACT system in compliance with the following requirements.

(1) Provision is made for accurate determination and recording of uncorrected volume and applicable temperature, or of temperature corrected volume. The system's overall accuracy shall equal or surpass manual methods.

- *The LACT system is more accurate when compared to a manual tank sale. It is proved per BLM Onshore Order #4 Measurement of Oil and API MPMS Chapter 4 Proving Systems; with a volumetric prover that meets the requirements set forth in Onshore Order #4. The LACT also has a temperature RTD which will be calibrated semi-annually, unless more frequent verification is requested by the division.*

(2) Provision is made for representative sampling of the oil transferred for determination of API gravity and BS&W content.

- *The LACT is equipped with a flow proportional sampler (sample probe and actuated valve). The sampled fluid is stored in a sealed cylinder that is used for API gravity and S&W determination.*

(3) Provision is made if required by either the oil's producer or the transporter to give adequate assurance that the ACT system runs only merchantable oil.

- *The LACT is equipped with a water cut analyzer that communicates with the flow computer. When the S&W set point is reached the divert valve will engage sending non-merchantable oil to a divert tank. The set point can be adjusted in the flow computer but only if agreed upon by both shipper and producer.*

(4) Provision is made for set-stop counters to stop the flow of oil through the ACT system at or prior to the time the allowable has been run. Counters shall provide non-reset totalizers that are visible for inspection at all times.

- *The Coriolis meter has non-resettable totalizer which is always visibly available on the LCD display.*

(5) Necessary controls and equipment are enclosed and sealed, or otherwise arranged to provide assurance against, or evidence of, accidental or purposeful mismeasurement resulting from tampering.

- *Required ports are sealed and tracked in the seal log.*

(6) The ACT system's components are properly sized to ensure operation within the range of their established ratings. All system components that require periodic calibration or inspection for proof of continued accuracy are readily accessible; the frequency and methods of the calibration or inspection shall be as set forth in Paragraph (12) of Subsection C of 19.15.18.15 NMAC.

- *The Coriolis is proved per BLM Onshore Order #4 Measurement of Oil and API MPMS Chapter 4 Proving Systems; with a volumetric prover that meets the requirements set forth in Onshore Order #4. The prover is NIST traceable and water drawn on a bi-annual basis. Proving will be consistent with Onshore Order #4, unless a variance is granted by the Division. NMOCD representatives are sent the schedule to witness if desired. The temperature transmitter is verified on a semi-annual basis, unless more frequent verification is requested by the Division. The water cut analyzer is calibrated as needed.*

(7) The control and recording system includes adequate fail-safe features that provide assurance against mismeasurement in the event of power failure, or the failure of the ACT system's component parts.

- *In the event of power failure, the divert valve mechanically goes to "failed state" and no longer sales oil but only sends it to the divert tank.*
- *All of the historized volume data is stored in flow computer memory with battery backup and is also transmitted by SCADA, multiple times a day, to an office server. So even during a power failure no oil volume is lost.*
- *In the event of a malfunction, the LACT unit is programmed to shut off and divert valve is forced to close and no longer sales oil but only sends it to the divert tank. The malfunction is also logged by the flow computer.*

(8) The ACT system and allied facilities include fail-safe equipment as may be necessary, including high level switches in the surge tank or overflow storage tank that, in the event of power failure or malfunction of the ACT or other equipment, will shut down artificially lifted wells connected to the ACT system and will shut in flowing wells at the well-head or at the header manifold, in which latter case the operator of the ACT system shall pressure test all flowlines to at least 1½ times the maximum well-head shut-in pressure prior to the ACT system's initial use and every two years thereafter.

- *Hi level switches are in place and will shut the well in at the inlet to the production unit in the event of a full tank. Flow lines were tested to 1 ½ times shut in pressure at initial construction. Testing will commence every two years to ensure piping integrity.*

(9) As an alternative to the requirements of Paragraph (8) of Subsection C of 19.15.18.15 NMAC the producer shall provide and at all times maintain a minimum of available storage capacity above the normal high working level of the surge tank to receive and hold the amount of oil that may be produced during maximum unattended time of lease operation.

- *N/A*

(10) In all ACT systems employing automatic measuring tanks, weir-type measuring vessels, positive volume metering chambers or any other volume measuring container, the container and allied components shall be properly calibrated prior to initial use and shall be operated, maintained and inspected as necessary to ensure against incrustation, changes in clingage factors, valve leakage or other leakage and improper action of floats, level detectors, etc.

- *N/A – Coriolis Meter*

(11) In ACT systems employing positive displacement meters, the meter and allied components shall be properly calibrated prior to initial use and shall be operated, maintained and inspected as necessary to ensure against oil mismeasurement.

- *The Coriolis is proved per BLM Onshore Order #4 Measurement of Oil and API MPMS Chapter 4 Proving Systems; with a volumetric prover that meets the requirements set forth in Onshore Order #4. The prover is NIST traceable and water drawn on a bi-annual basis. Monthly proving will continue per the rule, unless a variance is granted by the Division. NMOC representatives are sent the schedule to witness if desired. The temperature transmitter is verified on a semi-annual basis, unless more frequent verification is requested by the Division.*

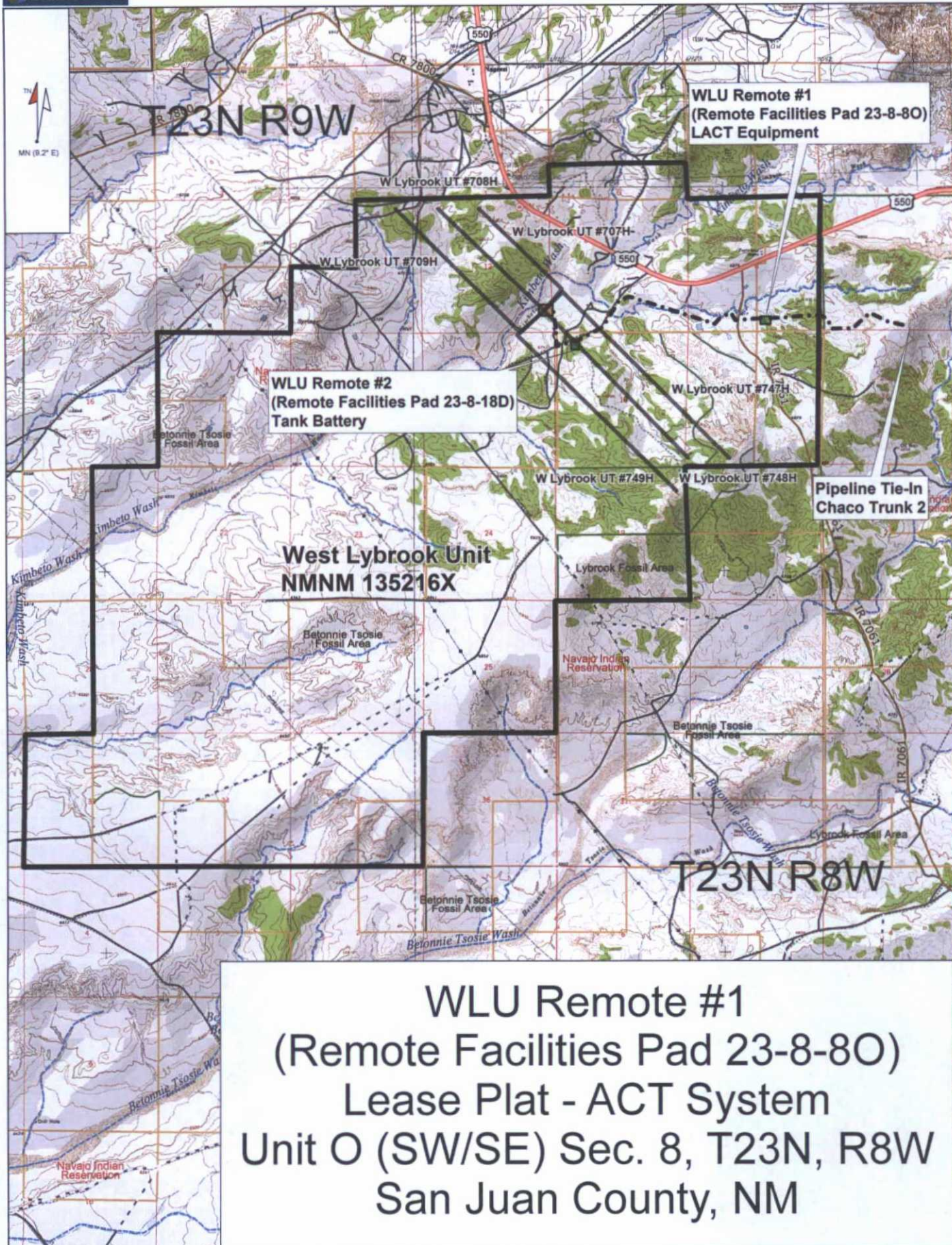
(12) The operator of the ACT system shall check the measuring and recording devices of ACT systems for accuracy at least once each month unless it has obtained an exception to such determination from the division. Where applicable, the operator of the ACT system shall use API standard 1101, Measurement of Petroleum Hydrocarbons by Positive Displacement Meter. Meters may be proved against master meters, portable prover tanks or prover tanks permanently installed on the lease. If the operator of the ACT system uses permanently installed prover tanks, the distance between the opening and closing levels and the provision for determining the opening and closing readings shall be sufficient to detect variations of 5/100 of one percent. The operator of the ACT system shall file reports of determination on the division form entitled "meter test report" or on another acceptable form in duplicate with the appropriate division district office.

- *The Coriolis is proved per BLM Onshore Order #4 Measurement of Oil and API MPMS Chapter 4 Proving Systems; with a volumetric prover that meets the requirements set forth in Onshore Order #4. The prover is NIST traceable and water drawn on a bi-annual basis. Monthly proving will continue per the rule, unless a variance is granted by the Division. NMOC representatives are sent the schedule to witness if desired. The temperature transmitter is verified on a semi-annual basis, unless more frequent verification is requested by the Division.*

(13) To obtain an exception to the requirement in Paragraph (12) of Subsection C of 19.15.18.15 NMAC that all measuring and recording devices be checked for accuracy once each month, either the producer or transporter may file a request with the director setting forth facts pertinent to the exception. The application shall include a history of the average factors previously obtained, both tabulated and plotted on a graph of factors versus time, showing that the particular installation has experienced no erratic drift. The applicant shall also furnish evidence that the other interested party has agreed to the exception. The director may then set the frequency for determination of the system's accuracy at the interval which the director deems prudent.

- *N/A*

D. The division may revoke its approval of an ACT system's form C-106 if the system's operator fails to operate it in compliance with 19.15.18.15 NMAC.



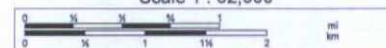
WLU Remote #1
(Remote Facilities Pad 23-8-80)
Lease Plat - ACT System
Unit O (SW/SE) Sec. 8, T23N, R8W
San Juan County, NM

Data use subject to license.

© DeLorme. Topo North America™ 9.

www.delorme.com

Scale 1 : 62,500

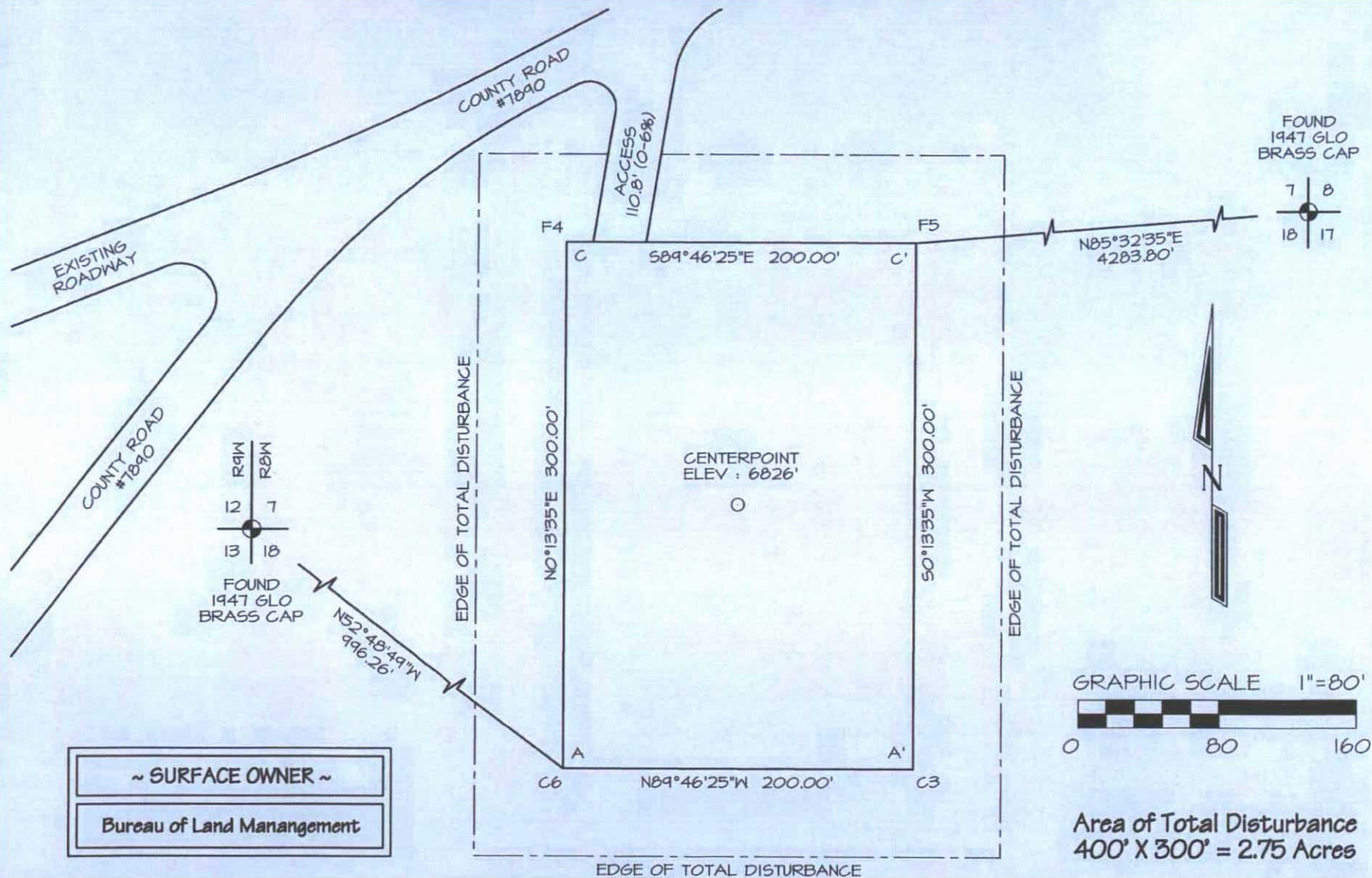


1" = 5,208.3 ft

Data Zoom 11-6

FOUND
1947 GLO
BRASS CAP

**WPX ENERGY PRODUCTION, LLC
 REMOTE FACILITIES PAD 23-8-18D
 451' FNL, 896' FWL, SECTION 18, T23N, R8W
 SAN JUAN COUNTY, NEW MEXICO ELEVATION: 6826'
 LAT: 36.232985°N LONG: 107.728379°W DATUM: NAD1983**



Steel T-Posts have been set to define Edge of Disturbance limits which are 50' offset from edge of remote facilities pad.

District I
1625 N. French Drive, Hobbs, NM 88240
Phone: (575) 393-6161 Fax: (575) 393-0720

District II
811 S. First Street, Artesia, NM 88210
Phone: (575) 748-1283 Fax: (575) 748-9720

District III
1000 Rio Brazos Road, Aztec, NM 87410
Phone: (505) 334-6178 Fax: (505) 334-6170

District IV
1220 S. St. Francis Drive, Santa Fe, NM 87505
Phone: (505) 476-3460 Fax: (505) 476-3462

State of New Mexico
Energy, Minerals & Natural Resources Department

Form C-102
Revised August 1, 2011

Submit one copy to
Appropriate District Office

OIL CONSERVATION DIVISION
1220 South St. Francis Drive
Santa Fe, NM 87505

☐ AMENDED REPORT

AS DRILLED

WELL LOCATION AND ACREAGE DEDICATION PLAT

¹ API Number 30-045-35739	² Pool Code 98157	³ Pool Name LYBROOK MANCOS W
⁴ Property Code 315250	⁵ Property Name W LYBROOK UNIT	⁶ Well Number 707H
⁷ GRID No. 120782	⁸ Operator Name WPX ENERGY PRODUCTION, LLC	⁹ Elevation 6733'

¹⁰ Surface Location

UL or lot no.	Section	Township	Range	Lot Idn	Feet from the	North/South line	Feet from the	East/West line	County
P	12	23N	9W		877	SOUTH	366	EAST	SAN JUAN

¹¹ Bottom Hole Location If Different From Surface

UL or lot no.	Section	Township	Range	Lot Idn	Feet from the	North/South line	Feet from the	East/West line	County
C	12	23N	9W		339	NORTH	2325	WEST	SAN JUAN

¹² Dedicated Acres 239.81	NW/4 SW/4 (Section 7) NE/4 NW/4, NW/4 NE/4 S/2 NE/4, NE/4 SE/4 (Section 12)	¹³ Joint or Infill	¹⁴ Consolidation Code	¹⁵ Order No. R-14051 - 12,807.24 Acres
---	---	-------------------------------	----------------------------------	--

NO ALLOWABLE WILL BE ASSIGNED TO THIS COMPLETION
UNTIL ALL INTERESTS HAVE BEEN CONSOLIDATED OR A
NON-STANDARD UNIT HAS BEEN APPROVED BY THE DIVISION

END-OF-LATERAL
339' FNL 2325' FNL
SECTION 12, T23N, R9W
LAT: 36.247879°N
LONG: 107.740856°W
DATUM: NAD1927
LAT: 36.247892°N
LONG: 107.741469°W
DATUM: NAD1983

RSI TOOL
418' FNL 2408' FNL
SECTION 12, T23N, R9W
LAT: 36.247670°N
LONG: 107.740572°W
DATUM: NAD1927
LAT: 36.247683°N
LONG: 107.741186°W
DATUM: NAD1983

SURFACE LOCATION
877' FSL 366' FEL
SECTION 12, T23N, R9W
LAT: 36.236624°N
LONG: 107.732279°W
DATUM: NAD1927
LAT: 36.236637°N
LONG: 107.732892°W
DATUM: NAD1983

POINT-OF-ENTRY
1718' FSL 404' FNL
SECTION 7, T23N, R9W
LAT: 36.238940°N
LONG: 107.729902°W
DATUM: NAD1927
LAT: 36.238952°N
LONG: 107.730515°W
DATUM: NAD1983

¹⁷ OPERATOR CERTIFICATION

I hereby certify that the information contained herein is true and complete to the best of my knowledge and belief, and that this organization either owns a working interest or unleased mineral interest in the land including the proposed bottom-hole location or has a right to drill this well at this location pursuant to a contract with an owner of such a mineral or working interest, or to a voluntary pooling agreement or a compulsory pooling order heretofore entered by the division.

Signature _____ Date 6/7/16
Lacey Granillo
Printed Name
lacey.granillo@wpxenergy.com
E-mail Address

¹⁸ SURVEYOR CERTIFICATION

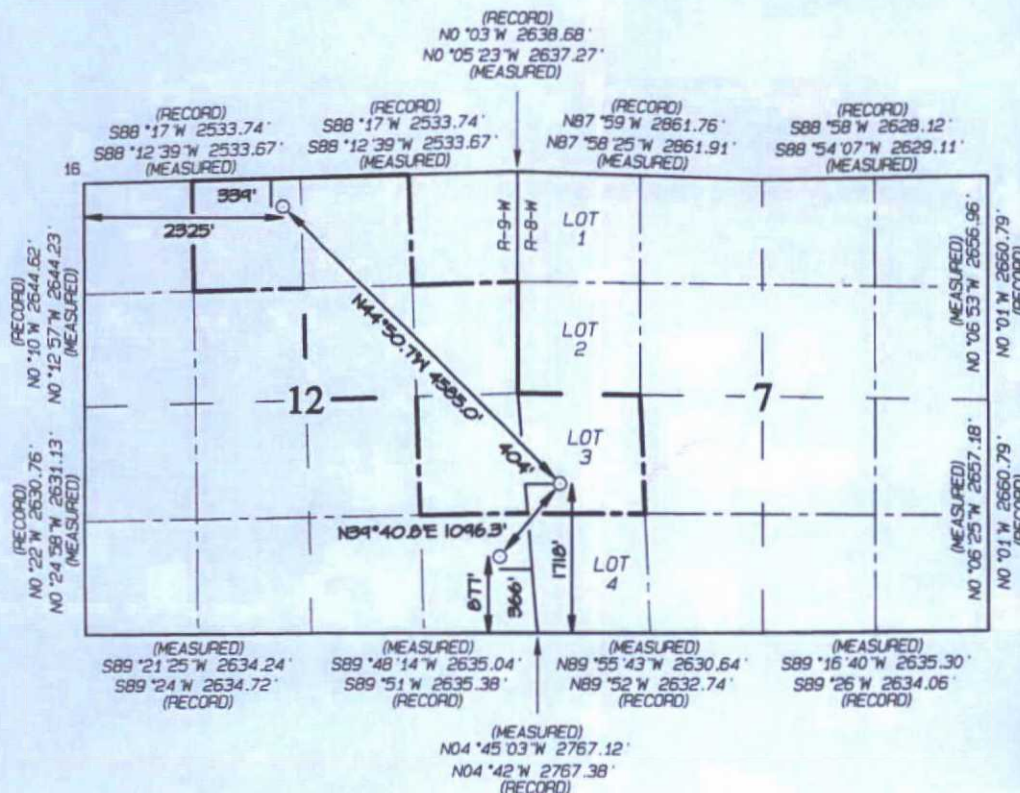
I hereby certify that the well location shown on this plat was plotted from field notes of actual surveys made by me or under my supervision, and that the same is true and correct to the best of my belief.

Date Revised: MAY 3, 2016
Date of Survey: MAY 18, 2015

Signature and Seal of Professional Surveyor



JASON C. EDWARDS
Certificate Number 15269



District I
1625 N. French Drive, Hobbs, NM 88240
Phone: (575) 393-6161 Fax: (575) 393-0720

District II
811 S First Street, Artesia, NM 88210
Phone: (575) 748-1283 Fax: (575) 748-9720

District III
1000 Rio Brazos Road, Aztec, NM 87410
Phone: (505) 334-6178 Fax: (505) 334-6170

District IV
1220 S. St. Francis Drive, Santa Fe, NM 87505
Phone: (505) 476-3460 Fax: (505) 476-3462

State of New Mexico
Energy, Minerals & Natural Resources Department

Form C-102
Revised August 1, 2011

Submit one copy to
Appropriate District Office

OIL CONSERVATION DIVISION
1220 South St. Francis Drive
Santa Fe, NM 87505

☐ AMENDED REPORT

AS DRILLED

WELL LOCATION AND ACREAGE DEDICATION PLAT

*API Number 30-045-35740	*Pool Code 98157	*Pool Name LYBROOK MANCOS W
*Property Code 315250	*Property Name W LYBROOK UNIT	*Well Number 708H
*GRID No. 120782	*Operator Name WPX ENERGY PRODUCTION, LLC	*Elevation 6733'

10 Surface Location

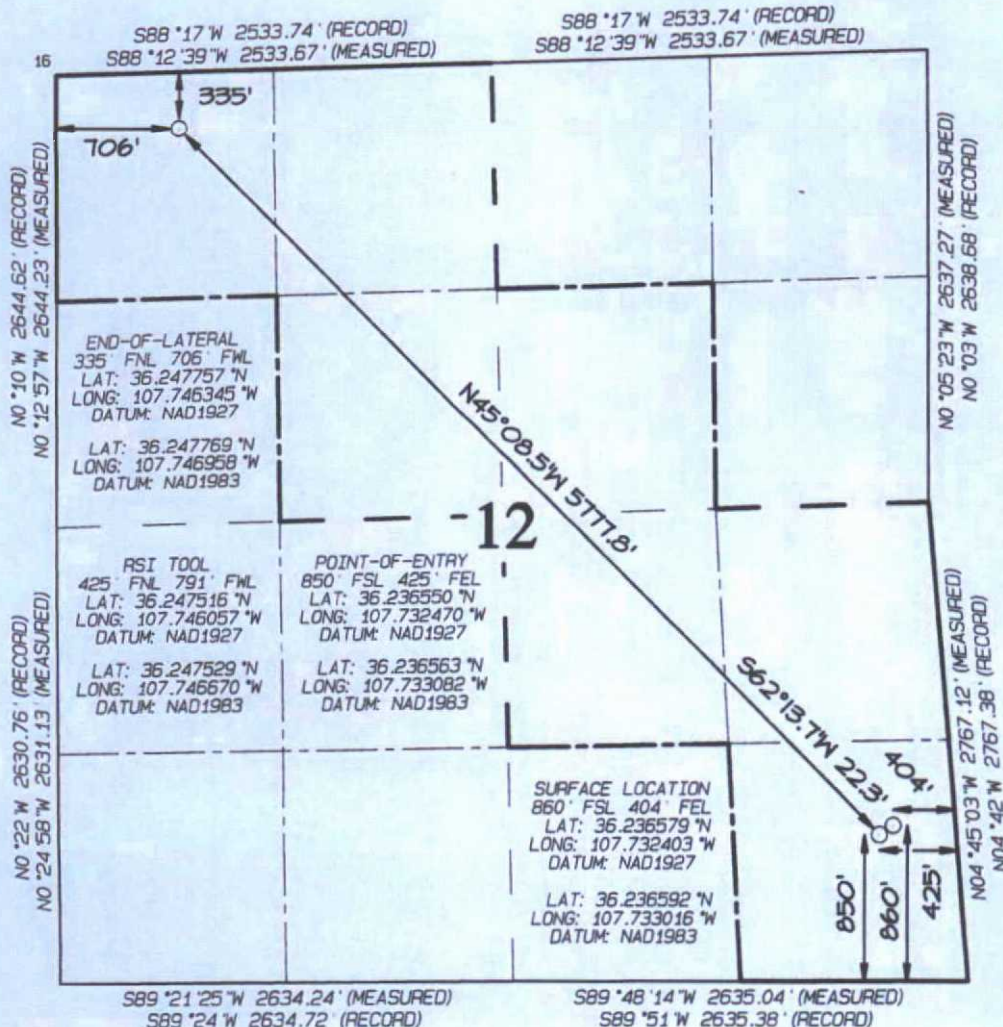
UL or lot no.	Section	Township	Range	Lot Idn	Feet from the	North/South line	Feet from the	East/West line	County
P	12	23N	9W		860	SOUTH	404	EAST	SAN JUAN

11 Bottom Hole Location If Different From Surface

UL or lot no.	Section	Township	Range	Lot Idn	Feet from the	North/South line	Feet from the	East/West line	County
D	12	23N	9W		335	NORTH	706	WEST	SAN JUAN

*Dedicated Acres 280.0	N/2 NW/4, SE/4 NW/4 SW/4 NE/4, N/2 SE/4 SE/4 SE/4 (Section 12)	*Joint or Infill	*Consolidation Code	*Order No. R-14051 - 12,807.24 Acres
---------------------------	--	------------------	---------------------	---

NO ALLOWABLE WILL BE ASSIGNED TO THIS COMPLETION
UNTIL ALL INTERESTS HAVE BEEN CONSOLIDATED OR A
NON-STANDARD UNIT HAS BEEN APPROVED BY THE DIVISION



17 OPERATOR CERTIFICATION

I hereby certify that the information contained herein is true and complete to the best of my knowledge and belief, and that this organization either owns a working interest or unless mineral interest in the land including the proposed bottom-hole location or has a right to drill this well at this location pursuant to a contract with an owner of such a mineral or working interest, or to a voluntary pooling agreement or a compulsory pooling order heretofore entered by the division.

Signature
Lacey Granillo

Printed Name
lacey.granillo@wpxenergy.com

E-mail Address

18 SURVEYOR CERTIFICATION

I hereby certify that the well location shown on this plat was plotted from field notes of actual surveys made by me or under my supervision, and that the same is true and correct to the best of my belief.

Date Revised: APRIL 6, 2016
Date of Survey: MAY 18, 2015

Signature and Seal of Professional Surveyor



District I
1625 N. French Drive, Hobbs, NM 88240
Phone: (575) 393-6161 Fax: (575) 393-0720

District II
811 S. First Street, Artesia, NM 88210
Phone: (575) 748-1283 Fax: (575) 748-9720

District III
1000 Rio Brazos Road, Aztec, NM 87410
Phone: (505) 334-6178 Fax: (505) 334-6170

District IV
1220 S. St. Francis Drive, Santa Fe, NM 87505
Phone: (505) 476-3460 Fax: (505) 476-3462

State of New Mexico
Energy, Minerals & Natural Resources Department

Form C-102
Revised August 1, 2011

Submit one copy to
Appropriate District Office

OIL CONSERVATION DIVISION
1220 South St. Francis Drive
Santa Fe, NM 87505

☐ AMENDED REPORT

AS DRILLED

WELL LOCATION AND ACREAGE DEDICATION PLAT

*API Number 30-045-35741		*Pool Code 98157		*Pool Name LYBROOK MANCOS W	
*Property Code 315250		*Property Name W LYBROOK UNIT			*Well Number 709H
*GRID No. 120782		*Operator Name WPX ENERGY PRODUCTION, LLC			*Elevation 6733'

¹⁰ Surface Location

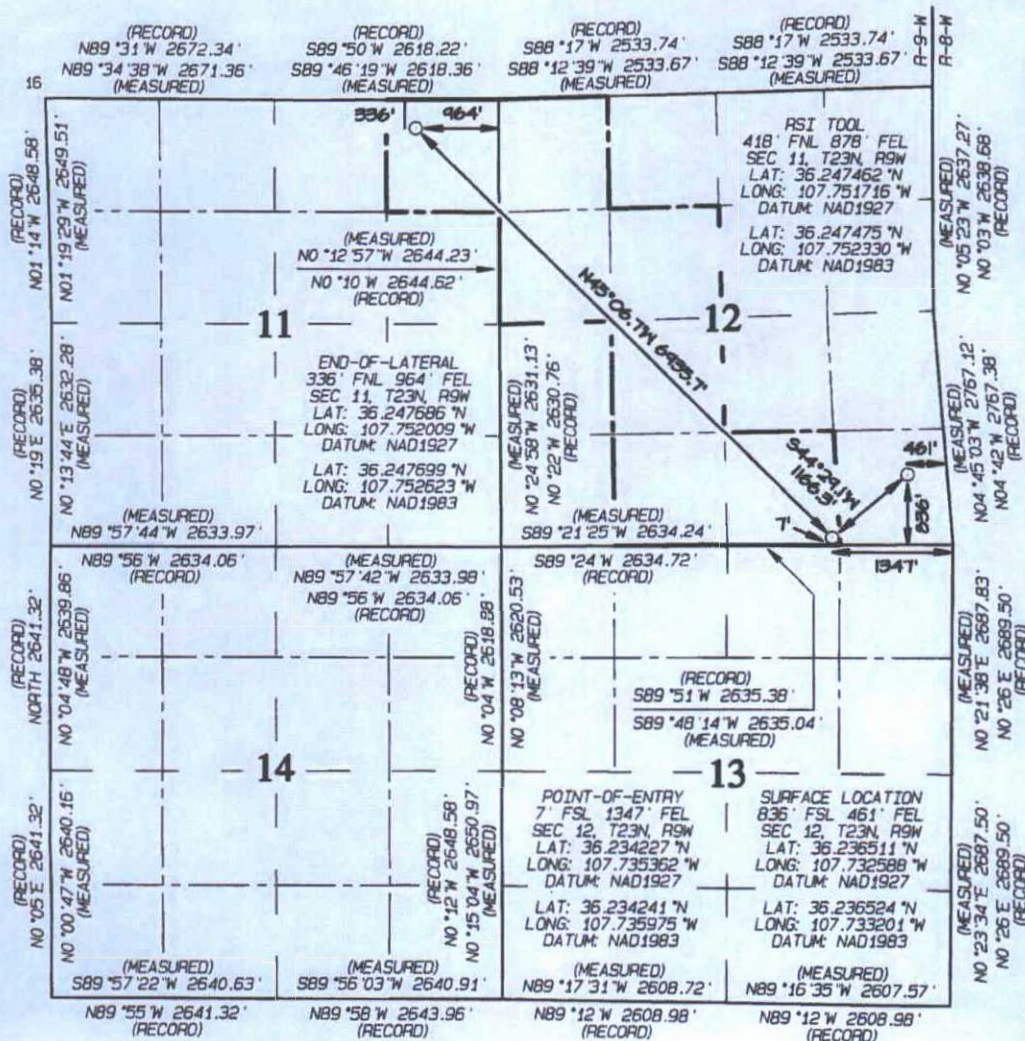
UL or lot no.	Section	Township	Range	Lot Idn	Feet from the	North/South line	Feet from the	East/West line	County
P	12	23N	9W		836	SOUTH	461	EAST	SAN JUAN

¹¹ Bottom Hole Location If Different From Surface

UL or lot no.	Section	Township	Range	Lot Idn	Feet from the	North/South line	Feet from the	East/West line	County
A	11	23N	9W		336	NORTH	964	EAST	SAN JUAN

¹² Dedicated Acres 280.0		NE/4 NE/4 (Section 11) NW/4 NW/4, S/2 NW/4 E/2 SW/4, SW/4 SE/4 (Section 12)		¹³ Joint or Infill	¹⁴ Consolidation Code	¹⁵ Order No. R-14051 - 12,807.24 Acres
--	--	---	--	-------------------------------	----------------------------------	--

NO ALLOWABLE WILL BE ASSIGNED TO THIS COMPLETION
UNTIL ALL INTERESTS HAVE BEEN CONSOLIDATED OR A
NON-STANDARD UNIT HAS BEEN APPROVED BY THE DIVISION



¹⁷ OPERATOR CERTIFICATION

I hereby certify that the information contained herein is true and complete to the best of my knowledge and belief, and that this organization either owns a working interest or unleased mineral interest in the land including the proposed bottom-hole location or has a right to drill this well at this location pursuant to a contract with an owner of such a mineral or working interest, or to a voluntary pooling agreement or a compulsory pooling order heretofore entered by the division.

Signature: Lacey Granillo
Date: 6/7/16

Printed Name: lacey.granillo@wpxenergy.com
E-mail Address:

¹⁸ SURVEYOR CERTIFICATION

I hereby certify that the well location shown on this plat was plotted from field notes of actual surveys made by me or under my supervision, and that the same is true and correct to the best of my belief.

Date Revised: MARCH 9, 2016
Date of Survey: MAY 18, 2015

Signature and Seal of Professional Surveyor



JASON C. EDWARDS
Certificate Number 15269

District I
1625 N. French Drive, Hobbs, NM 88240
Phone: (575) 393-6161 Fax: (575) 393-0720

District II
811 S. First Street, Artesia, NM 88210
Phone: (575) 748-1283 Fax: (575) 748-9720

District III
1000 Rio Brazos Road, Aztec, NM 87410
Phone: (505) 334-6178 Fax: (505) 334-6170

District IV
1220 S. St. Francis Drive, Santa Fe, NM 87505
Phone: (505) 476-3460 Fax: (505) 476-3462

State of New Mexico
Energy, Minerals & Natural Resources Department

Form C-102
Revised August 1, 2011

Submit one copy to
Appropriate District Office

OIL CONSERVATION DIVISION
1220 South St. Francis Drive
Santa Fe, NM 87505

☐ AMENDED REPORT

WELL LOCATION AND ACREAGE DEDICATION PLAT

¹ API Number 30-045-35742	² Pool Code 98157	³ Pool Name LYBROOK MANCOS W
⁴ Property Code 315250	⁵ Property Name W LYBROOK UNIT	⁶ Well Number 747H
⁷ GRID No. 120782	⁸ Operator Name WPX ENERGY PRODUCTION, LLC	⁹ Elevation 6733'

¹⁰ Surface Location

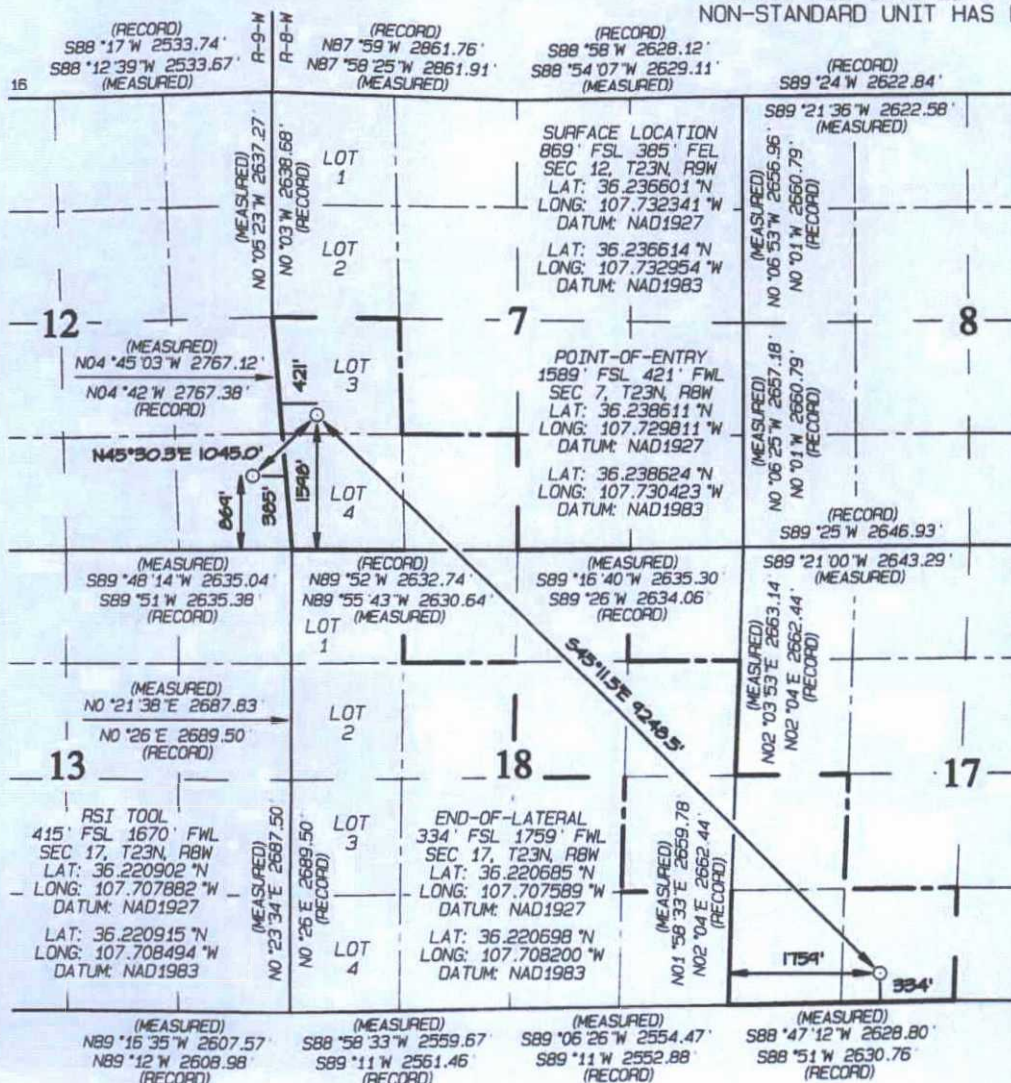
UL or lot no.	Section	Township	Range	Lot Idn	Feet from the	North/South line	Feet from the	East/West line	County
P	12	23N	9W		869	SOUTH	385	EAST	SAN JUAN

¹¹ Bottom Hole Location If Different From Surface

UL or lot no.	Section	Township	Range	Lot Idn	Feet from the	North/South line	Feet from the	East/West line	County
N	17	23N	8W		334	SOUTH	1759	WEST	SAN JUAN

¹² Dedicated Acres 439.42 NE/4 NW/4, NW/4 NE/4 S/2 NE/4, NE/4 SE/4 (Section 18) NW/4 SW/4, S/2 SW/4 (Section 17) NW/4 SW/4, S/2 SW/4 (Section 7)	¹³ Joint or Infill	¹⁴ Consolidation Code	¹⁵ Order No. R-14051 - 12807.24 Acres
---	-------------------------------	----------------------------------	---

NO ALLOWABLE WILL BE ASSIGNED TO THIS COMPLETION
UNTIL ALL INTERESTS HAVE BEEN CONSOLIDATED OR A
NON-STANDARD UNIT HAS BEEN APPROVED BY THE DIVISION



¹⁷ OPERATOR CERTIFICATION

I hereby certify that the information contained herein is true and complete to the best of my knowledge and belief, and that this organization either owns a working interest or unleased mineral interest in the land including the proposed bottom-hole location or has a right to drill this well at this location pursuant to a contract with an owner of such a mineral or working interest or to a voluntary pooling agreement or a compulsory pooling order heretofore obtained by the division.

Signature: *[Signature]* Date: 10/17/16
Printed Name: Lacey Granillo
E-mail Address: lacey.granillo@wpxenergy.com

¹⁸ SURVEYOR CERTIFICATION

I hereby certify that the well location shown on this plat was plotted from field notes of actual surveys made by me or under my supervision, and that the same is true and correct to the best of my belief.

Date Revised: APRIL 28, 2016
Date of Survey: MAY 18, 2015

Signature and Seal of Professional Surveyor



JASON C. EDWARDS

Certificate Number 15269

District I
1625 N French Drive, Hobbs, NM 88240
Phone: (575) 393-6161 Fax: (575) 393-0720

District II
811 S First Street, Artesia, NM 88210
Phone: (505) 748-1283 Fax: (505) 748-9720

District III
1000 Rio Brazos Road, Aztec, NM 87410
Phone: (505) 334-6178 Fax: (505) 334-6170

District IV
1220 S. St. Francis Drive, Santa Fe, NM 87505
Phone: (505) 476-3460 Fax: (505) 476-3462

State of New Mexico
Energy, Minerals & Natural Resources Department

Form C-102
Revised August 1, 2011

Submit one copy to
Appropriate District Office

OIL CONSERVATION DIVISION

1220 South St. Francis Drive
Santa Fe, NM 87505

☐ AMENDED REPORT

WELL LOCATION AND ACREAGE DEDICATION PLAT

*API Number 30-045-35743		*Pool Code 98157		*Pool Name LYBROOK MANCOS W	
*Property Code 315250		*Property Name W LYBROOK UNIT			*Well Number 748H
*GRID No 120782		*Operator Name WPX ENERGY PRODUCTION, LLC			*Elevation 6733

10 Surface Location

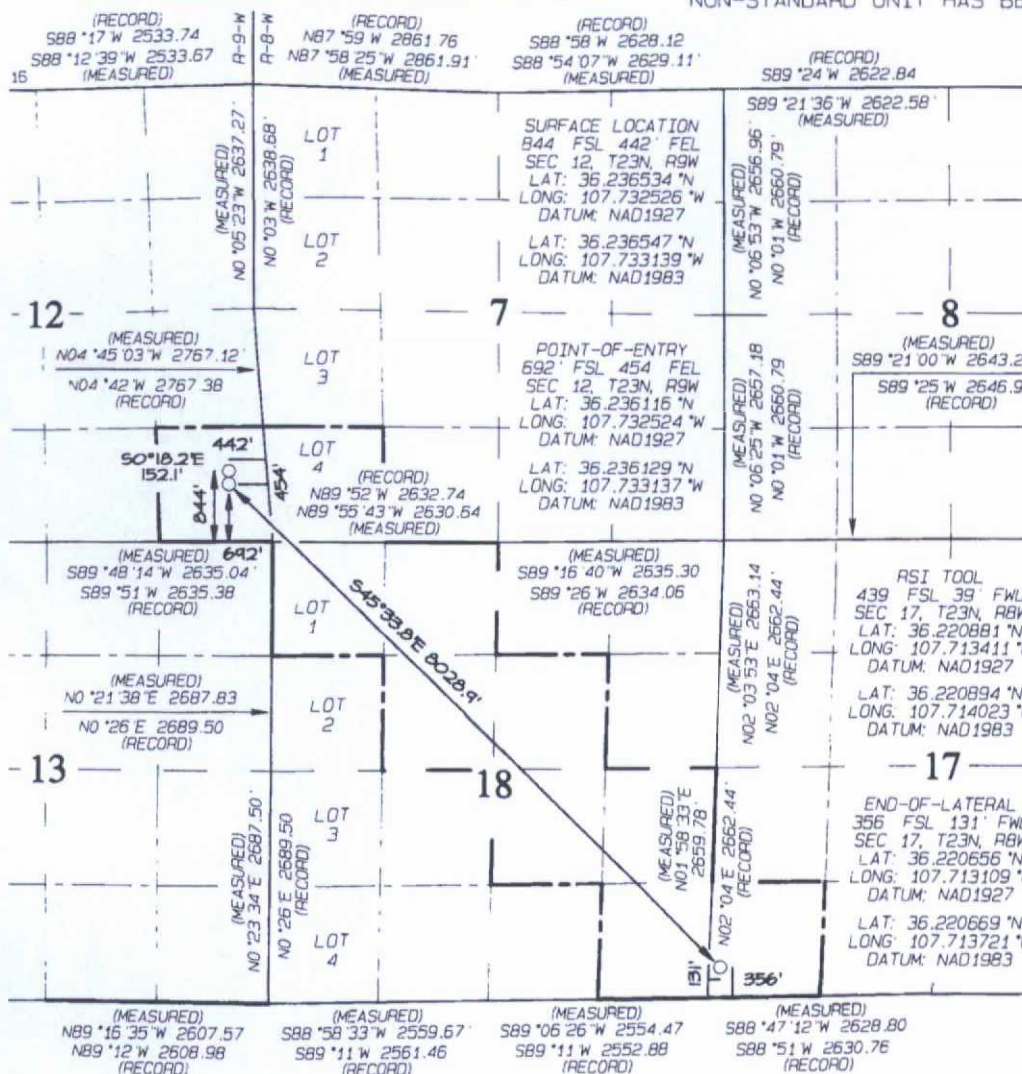
UL or lot no	Section	Township	Range	Lot Ion	Feet from the	North/South line	Feet from the	East/West line	County
P	12	23N	9W		844	SOUTH	442	EAST	SAN JUAN

11 Bottom Hole Location If Different From Surface

UL or lot no	Section	Township	Range	Lot Ion	Feet from the	North/South line	Feet from the	East/West line	County
M	17	23N	8W		356	SOUTH	131	WEST	SAN JUAN

*Dedicated Acres 399.20		SE/4 SE/4 (Section 12) SW/4 SW/4 (Section 7) SW/4 SW/4 (Section 17) N/2 NW/4, SE/4 NW/4, SW/4 NE/4 N/2, SE/4, SE/4 SE/4 (Section 18)		*Joint or Infill	*Consolidation Code	*Order No. R-14051 - 12,807.24 Acres
----------------------------	--	--	--	------------------	---------------------	---

NO ALLOWABLE WILL BE ASSIGNED TO THIS COMPLETION
UNTIL ALL INTERESTS HAVE BEEN CONSOLIDATED OR A
NON-STANDARD UNIT HAS BEEN APPROVED BY THE DIVISION



17 OPERATOR CERTIFICATION

I hereby certify that the information contained herein is true and complete to the best of my knowledge and belief, and that this organization either owns a working interest or unleased mineral interest in the land including the proposed bottom-hole location or has a right to drill this well at this location pursuant to a contract with an owner of such a mineral or working interest, or to a voluntary pooling agreement or a compulsory pooling order heretofore entered by the division.

Signature: *Lacey Granillo* Date: 6/7/16
Printed Name: Lacey Granillo
E-mail Address: lacey.granillo@wpxenergy.com

18 SURVEYOR CERTIFICATION

I hereby certify that the well location shown on this plat was plotted from field notes of actual surveys made by me or under my supervision, and that the same is true and correct to the best of my belief.

Date Revised: MARCH 31, 2016
Date of Survey: MAY 18, 2015

Signature and Seal of Professional Surveyor



JASON C. EDWARDS

Certificate Number 15269

District I
1625 N. French Drive, Hobbs, NM 88240
Phone: (575) 393-6161 Fax: (575) 393-0720

District II
811 S. First Street, Artesia, NM 88210
Phone: (575) 748-1283 Fax: (575) 748-9720

District III
1000 Rio Brazos Road, Aztec, NM 87410
Phone: (505) 334-6178 Fax: (505) 334-6170

District IV
1220 S. St. Francis Drive, Santa Fe, NM 87505
Phone: (505) 476-3460 Fax: (505) 476-3462

State of New Mexico
Energy, Minerals & Natural Resources Department

Form C-102
Revised August 1, 2011

Submit one copy to
Appropriate District Office

OIL CONSERVATION DIVISION
1220 South St. Francis Drive
Santa Fe, NM 87505

☐ AMENDED REPORT

WELL LOCATION AND ACREAGE DEDICATION PLAT

*API Number 30-045-35744		*Pool Code 98157	*Pool Name LYBROOK MANCOS W
*Property Code 315250	*Property Name W LYBROOK UNIT		*Well Number 749H
*GRID No. 120782	*Operator Name WPX ENERGY PRODUCTION, LLC		*Elevation 6733'

¹⁰ Surface Location

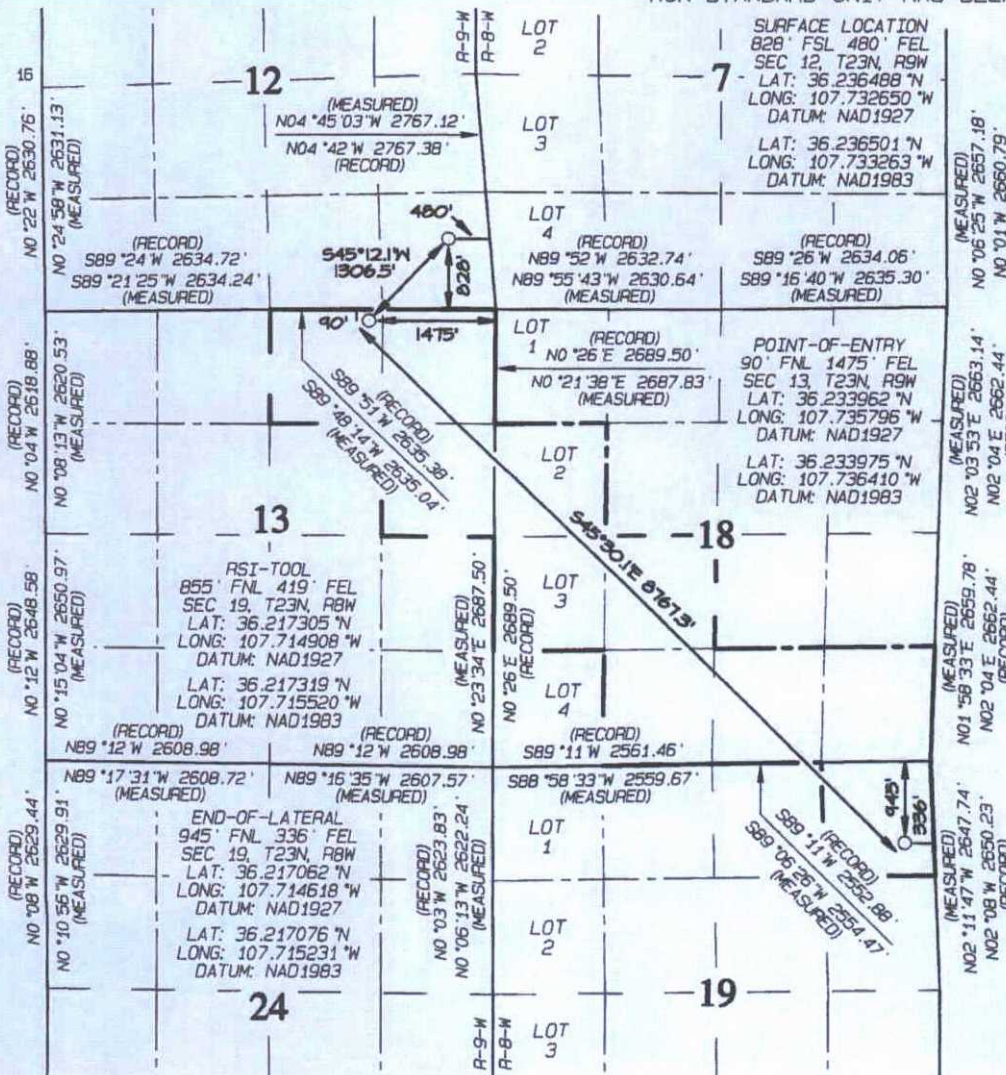
UL or lot no.	Section	Township	Range	Lot Idn	Feet from the	North/South line	Feet from the	East/West line	County
P	12	23N	9W		828	SOUTH	480	EAST	SAN JUAN

¹¹ Bottom Hole Location If Different From Surface

UL or lot no.	Section	Township	Range	Lot Idn	Feet from the	North/South line	Feet from the	East/West line	County
A	19	23N	8W		945	NORTH	336	EAST	SAN JUAN

¹² Dedicated Acres NE/4 NE/4 (Section 19) 399.76 SW/4 NW/4, N/2 SW/4 SE/4 SW/4, S/2 SE/4 (Section 18) N/2 NE/4, SE/4 NE/4 (Section 13)		¹³ Joint or Infill	¹⁴ Consolidation Code	¹⁵ Order No. R-14051 - 12,807.24 Acres
---	--	-------------------------------	----------------------------------	--

NO ALLOWABLE WILL BE ASSIGNED TO THIS COMPLETION
UNTIL ALL INTERESTS HAVE BEEN CONSOLIDATED OR A
NON-STANDARD UNIT HAS BEEN APPROVED BY THE DIVISION



¹⁷ OPERATOR CERTIFICATION

I hereby certify that the information contained herein is true and complete to the best of my knowledge and belief, and that this organization either owns a working interest or unleased mineral interest in the land including the proposed bottom-hole location or has a right to drill this well at this location pursuant to a contract with an owner of such a mineral or working interest, or to a voluntary pooling agreement or a compulsory pooling order as described and entered by the division.

Signature: *[Signature]* Date: 6/7/16
Printed Name: Lacey Granillo
E-mail Address: lacey.granillo@wpxenergy.com

¹⁸ SURVEYOR CERTIFICATION

I hereby certify that the well location shown on this plat was plotted from field notes of actual surveys made by me or under my supervision, and that the same is true and correct to the best of my belief.

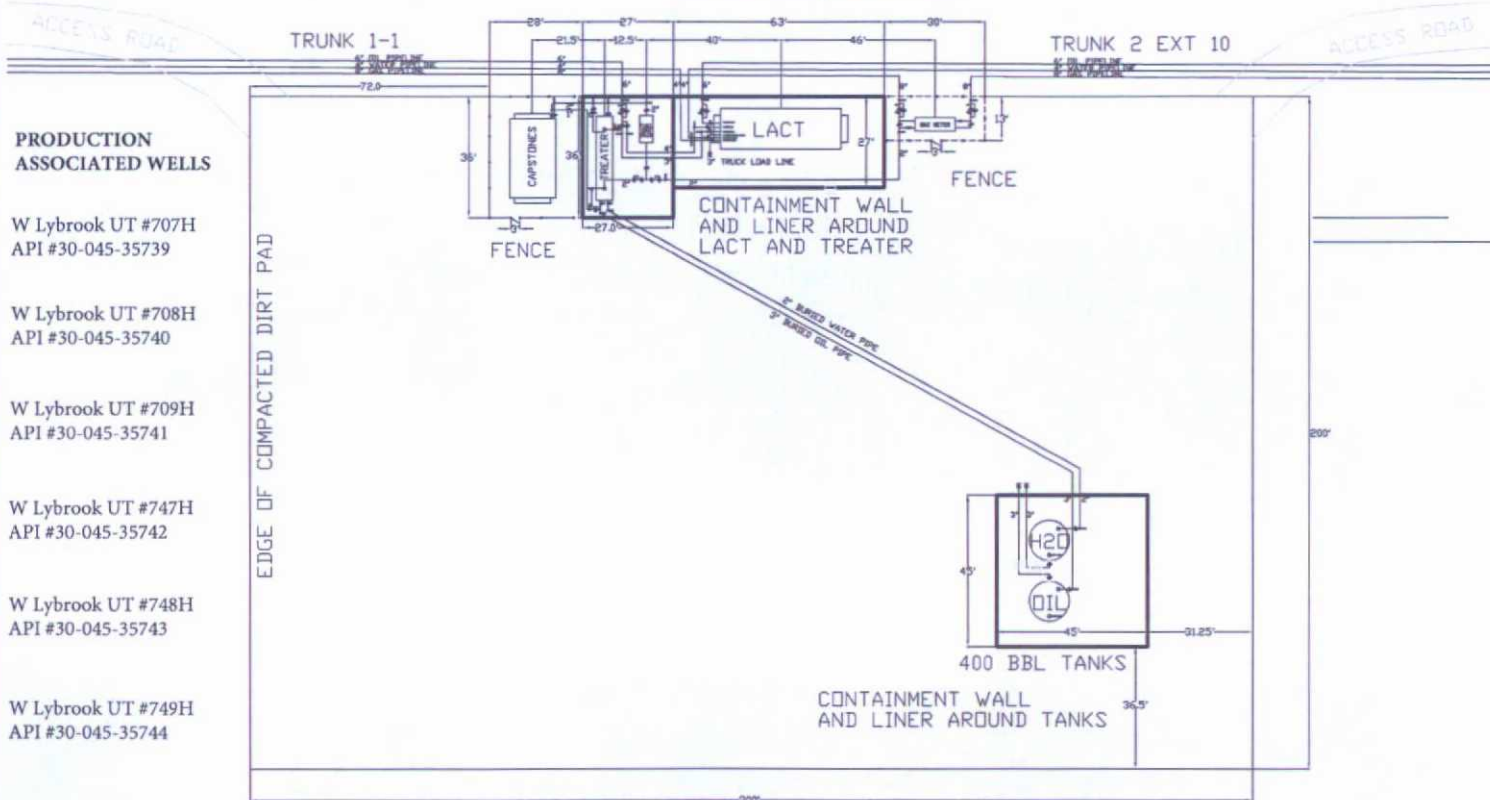
Date Revised: MARCH 24, 2016
Date of Survey: MAY 18, 2015

Signature and Seal of Professional Surveyor



JASON C. EDWARDS
Certificate Number 15269

WPX Energy Production, LLC
 WLU Remote #1
 (Remote Facilities Pad 23-8-80)
 LACT Equipment & Facilities Diagram
 NMNM 135216X
 Section 8, T23N, R8W, NMPM
 San Juan County, New Mexico



General Notes

Contractor to assemble and install secondary containment and impervious liner, furnished by others.

Contractor to assemble and install fence panels and gates as directed by company.

Contractor to assemble and install stairs and catwalks, furnished by others.

Contractor to assemble and install pipe supports, furnished by others.

LEGEND

NO - Normally open
 NC - Normally closed
 PSV - Pressure Safety Valve
 ATM Vent - Atmospheric Vent
 PV - Popping Valve
 PS - Pig Stop
 Riser - Pipe Comes Above Grade
 CV - Control Valve
 MCV - Motorized Control Valve
 PR - Pressure Regulator

APPROXIMATE EQUIPMENT WEIGHTS

38" x 20' Treater - 10,000 lbs.
 Fuel Gas Skid - 5,000 lbs.
 Capstone Skid - 12,000 lbs.
 LACT skid - 25,000 lbs.
 Gas Meter - 2,500 lbs.
 400 bbl tank - 8,500 lbs.

No.	Revision/Issue	Date

Firm Name and Address

WPX Energy
 3500 One
 Williams Center
 Tulsa, OK 74172

Project Name and Address

San Juan Basin
 Facilities Project
 LACT Facility
 pad 23-8-80

Project LACT Fac.	Sheet
Date 4-18-16	P-01
Scale NTS	

Felix, Andrea

From: Ernie Johnson <ernie.johnson@whiptailmidstream.com>
Sent: Tuesday, June 07, 2016 2:15 PM
To: Felix, Andrea
Cc: Bob O'Neal; Andy Pickle; Jude Dysart
Subject: Whiptail Midstream, LLC APPROVED Utilization of LACT Units

Andrea,

Whiptail Midstream, LLC agrees with the plan of allowing WPX Energy Production, LLC to utilize LACT units as the sales point on our pipeline system for the below listed facilities as long as, these LACT units will be proved per regulatory requirements.

- WLU Remote #1

If you have any questions please feel free to contact me.

Thank you,

Ernie Johnson

HSE Manager

Whiptail Midstream

O: (918) 289-2147

C: (918) 949-7580

ernie.johnson@whiptailmidstream.com

