

UNITED STATES  
DEPARTMENT OF THE INTERIOR  
BUREAU OF LAND MANAGEMENT

FORM APPROVED  
OMB No. 1004-0137  
Expires: July 31, 2010

RECEIVED  
MAY 18 2016  
Bureau of Land Management  
Farmington Field Office

**SUNDRY NOTICES AND REPORTS ON WELLS**  
*Do not use this form for proposals to drill or to re-enter an abandoned well. Use Form 3160-3 (APD) for such proposals.*

SUBMIT IN TRIPLICATE - Other instructions on page 2.

1. Type of Well <input type="checkbox"/> Oil Well <input checked="" type="checkbox"/> Gas Well <input type="checkbox"/> Other		7. If Unit of CA/Agreement, Name and/or No.
2. Name of Operator <b>ConocoPhillips Company</b>		8. Well Name and No. <b>Reid 1</b>
3a. Address <b>PO Box 4289, Farmington, NM 87499</b>	3b. Phone No. (include area code) <b>(505) 326-9700</b>	9. API Well No. <b>30-045-08220</b>
4. Location of Well (Footage, Sec., T., R., M., or Survey Description) <b>Surface Unit M (SWSW), 990' FSL &amp; 990' FWL, Sec. 13, T29N, R12W</b>		10. Field and Pool or Exploratory Area <b>Basin Dakota</b>
		11. Country or Parish, State <b>San Juan New Mexico</b>

12. CHECK THE APPROPRIATE BOX(ES) TO INDICATE NATURE OF NOTICE, REPORT OR OTHER DATA

TYPE OF SUBMISSION	TYPE OF ACTION			
<input checked="" type="checkbox"/> Notice of Intent	<input type="checkbox"/> Acidize	<input type="checkbox"/> Deepen	<input type="checkbox"/> Production (Start/Resume)	<input type="checkbox"/> Water Shut-Off
<input type="checkbox"/> Subsequent Report	<input type="checkbox"/> Alter Casing	<input type="checkbox"/> Fracture Treat	<input type="checkbox"/> Reclamation	<input type="checkbox"/> Well Integrity
<input type="checkbox"/> Final Abandonment Notice	<input type="checkbox"/> Casing Repair	<input type="checkbox"/> New Construction	<input type="checkbox"/> Recomplete	<input type="checkbox"/> Other
	<input type="checkbox"/> Change Plans	<input checked="" type="checkbox"/> Plug and Abandon	<input type="checkbox"/> Temporarily Abandon	
	<input type="checkbox"/> Convert to Injection	<input type="checkbox"/> Plug Back	<input type="checkbox"/> Water Disposal	

13. Describe Proposed or Completed Operation: Clearly state all pertinent details, including estimated starting date of any proposed work and approximate duration thereof. If the proposal is to deepen directionally or recomple horizontally, give subsurface locations and measured and true vertical depths of all pertinent markers and zones. Attach the bond under which the work will be performed or provide the Bond No. on file with BLM/BIA. Required subsequent reports must be filed within 30 days following completion of the involved operations. If the operation results in a multiple completion or recomple in a new interval, a Form 3160-4 must be filed once Testing has been completed. Final Abandonment Notices must be filed only after all requirements, including reclamation, have been completed and the operator has determined that the site is ready for final inspection.)

The subject well is part of the proposed Mangum SRC 1C P&A program agreed to with the NMOCD. The attached revised procedure replaces the procedure filed with the P&A NOI submitted on 3/31/2016.

Notify NMOCD 24 hrs  
prior to beginning  
operations

**BLM'S APPROVAL OR ACCEPTANCE OF THIS ACTION DOES NOT RELIEVE THE LESSEE AND OPERATOR FROM OBTAINING ANY OTHER AUTHORIZATION REQUIRED FOR OPERATIONS ON FEDERAL AND INDIAN LANDS**

**SEE ATTACHED FOR  
CONDITIONS OF APPROVAL**

OIL CONS. DIV DIST. 3

JUN 01 2016

14. I hereby certify that the foregoing is true and correct. Name (Printed/Typed) <b>Dollie L. Busse</b>		Title <b>Regulatory Technician</b>
Signature <i>Dollie L. Busse</i>	Date <i>5/16/16</i>	

THIS SPACE FOR FEDERAL OR STATE OFFICE USE

Approved by <i>Jack Lawrence</i>	Title <b>PE</b>	Date <i>5/31/16</i>
Conditions of approval, if any, are attached. Approval of this notice does not warrant or certify that the applicant holds legal or equitable title to those rights in the subject lease which would entitle the applicant to conduct operations thereon.	Office <b>FFO</b>	

Title 18 U.S.C. Section 1001 and Title 43 U.S.C. Section 1212, make it a crime for any person knowingly and willfully to make to any department or agency of the United States any false, fictitious or fraudulent statements or representations as to any matter within its jurisdiction.

XC  
di



# ConocoPhillips

## REID 1

### Expense - P&A

Lat 36° 43' 17.436" N

Long 108° 3' 18.202" W

#### PROCEDURE

This project requires the use of a steel tank to handle waste fluids circulated from the well and cement wash up.

Prior to commencing abandonment operations, ensure that the bradenhead valve is dug out and properly plumbed to the surface. Record the casing, intermediate and bradenhead pressures with an appropriately ranged gauge. Contact the Engineer if bradenhead pressure is present (per Exhibit "A-3").

1. Hold pre-job safety meeting. Comply with all NMOCD, BLM, and COP safety and environmental regulations. Test rig anchors prior to moving in rig. Before RU, run slickline to remove downhole equipment. If an obstruction is found, set a locking-3-slip-stop in the tubing.

2. MIRU workover rig. Check casing, tubing, and bradenhead pressures and record them in WellView. If there is pressure on the BH, contact the Wells Engineer (per Exhibit "A-3").

3. Remove existing piping on casing valve. RU blow lines from casing valves and begin blowing down casing pressure. Kill well as necessary. Ensure well is dead or on a vacuum.

4. ND wellhead and NU BOPE. Pressure and function test BOP to 250 psi low and 1000 psi over SICP high to a maximum of 2000 psi held and charted for 10 minutes per COP Well Control Manual. PU and remove tubing hanger.

5. TOOH with tubing (per pertinent data sheet).

**Tubing size:** 2-3/8" 4.7# J-55 EUE

**Set Depth:** 6,301'

**KB:** 12'

6. PU 3-7/8" bit and watermelon mill and round trip as deep as possible above top perforation at 6,142'.

7. PU 4-1/2" CR on tubing, and set at 6,092'. Pressure test tubing to 1000 psi. Sting out of CR. Load hole, and pressure test casing to 800 psi. If casing does not test, spot or tag subsequent plugs as appropriate. TOOH with tubing.

8. RU wireline and run CBL with 500 psi on casing from CR at 6,092' to surface to identify TOC. Adjust plugs as necessary for new TOC. Email log copy to Wells Engineer, Troy Salyers (BLM) at [tsalyers@blm.gov](mailto:tsalyers@blm.gov), and Brandon Powell (NMOCD) at [brandon.powell@state.nm.us](mailto:brandon.powell@state.nm.us) upon completion of logging operations.

All cement volumes use 100% excess outside pipe and 50' excess inside pipe. The stabilizing wellbore fluid will be 8.3 ppg, sufficient to balance all exposed formation pressures. All cement will be ASTM Class B mixed at 15.6 ppg with a 1.18 cf/sk yield.

#### **9. Plug 1 (Perforations, Dakota and Graneros formation tops, 5992-6092', 12 sacks Class B cement)**

Mix 12 sx Class B cement and spot a balanced plug inside the casing to cover the perforations, Dakota and Graneros tops. TOOH.

10. Roll the hole with water and ensure that the wellbore is in a stabilized condition with no flow of gas and/or water before spotting the next plug. If flow occurs, the fluid weight must be increased until a stabilized condition is established (per Exhibit "A-3").

#### **11. Plug 2 (Gallup formation top, 5243-5343', 51 sacks Class B cement)**

RIH and perforate 3 squeeze holes at 5,343'. Establish injection rate into squeeze holes. RIH with a 4-1/2" CR and set at 5,293'. Mix 51 sx Class B cement. Squeeze 39 sx outside the casing, leaving 12 sx inside the casing to cover the Gallup top. TOOH.

#### **12. Plug 3 (Mancos formation top, 4172-4272', 51 sacks Class B cement)**

RIH and perforate 3 squeeze holes at 4,272'. Establish injection rate into squeeze holes. RIH with a 4-1/2" CR and set at 4,222'. Mix 51 sx Class B cement. Squeeze 39 sx outside the casing, leaving 12 sx inside the casing to cover the Mancos top. TOOH.

#### **13. Plug 4 (Mesaverde formation top, 3186-3286', 51 sacks Class B cement)**

RIH and perforate 3 squeeze holes at 3,286'. Establish injection rate into squeeze holes. RIH with a 4-1/2" CR and set at 3,236'. Mix 51 sx Class B cement. Squeeze 39 sx outside the casing, leaving 12 sx inside the casing to cover the Mesaverde top. TOOH.

#### **14. Plug 5 (Pictured Cliffs formation top, 1629-1729', 12 sacks Class B cement)**

Mix 12 sx Class B cement and spot a balanced plug inside the casing to cover the Picture Cliffs top. TOOH.

*Continued on next page*

**ConocoPhillips**  
**REID 1**  
**Expense - P&A**

Lat 36° 43' 17.436" N

Long 108° 3' 18.202" W

**PROCEDURE (continued)**

**15. Plug 6 (Fruitland formation top, 853-953', 51 sacks Class B cement)**

RIH and perforate 3 squeeze holes at 953'. Establish injection rate into squeeze holes. RIH with a 4-1/2" CR and set at 903'. Mix 51 sx Class B cement. Squeeze 39 sx outside the casing, leaving 12 sx inside the casing to cover the Fruitland top. TOOH.

16. Cease operations for 30 minutes allowing the bradenhead to be observed for pressure build. Record pressures with crystal gauge for accuracy. If pressures are observed, notify Wells Engineer and Production Engineering for path-forward discussion with NMOCD (per Exhibit "A-3").

**17. Plug 7 (Kirtland formation top and surface plug, 0-572', 245 sacks Class B cement)**

RU WL and perforate 4 big hole charge (if available) squeeze holes at 572'. TOOH and RD wireline. **Observe well for 30 minutes per BLM regulations.** RU pump, close blind rams and establish circulation out bradenhead with water. Circulate BH clean. TIH with 4-1/2" CR and set at 522'. Mix 200 sx Class B cement and squeeze until good cement returns to surface out BH valve. Shut BH valve and squeeze to max 200 psi. Sting out of CR and reverse circulate cement out of tubing. TOOH and LD stinger. TIH with open ended tubing to 522'. Mix 45 sx Class B cement and pump inside plug. TOOH and LD Tubing. SI well and WOC.

18. Nipple down BOP and cut off casing below the casing flange. Install P&A marker with cement to comply with regulations. RDMO.

**Exhibit "A-3"**

To Final Agreement - Withdrawal of Notice of Violation (3-15-02)  
dated May 4, 2016 from ConocoPhillips Company to NMOCD

**Updated Abandonment Procedures**

The following procedural changes will be required for the P&A Program:

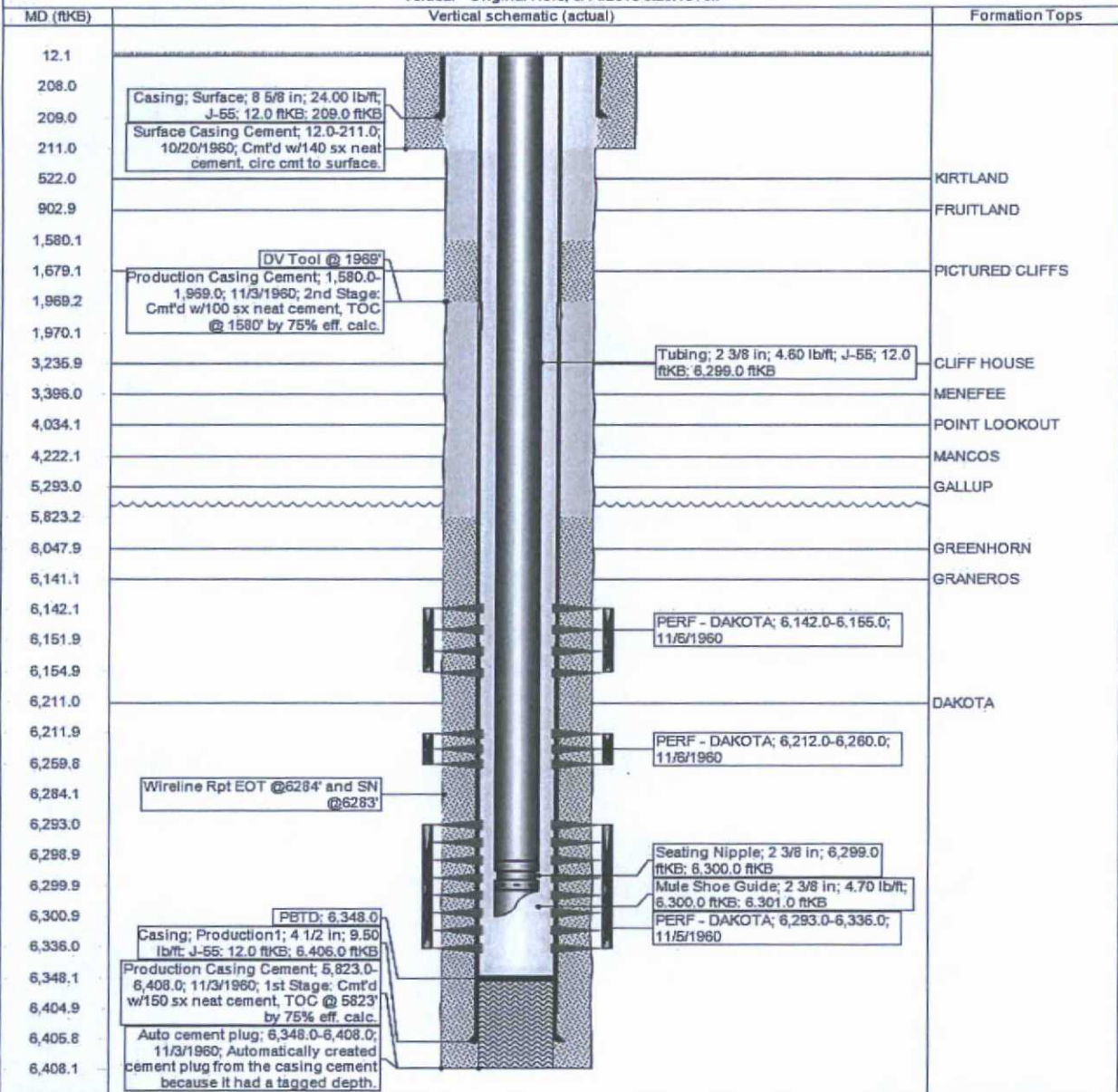
- 1) Prior to commencing abandonment operations, ensure that the bradenhead valve is dug out and properly plumbed to the surface. Record the casing, intermediate and bradenhead pressures with an appropriately ranged gauge. Contact the Engineer if bradenhead pressure is present. After the last set of completion perforations are abandoned with cement, roll the hole with water and ensure that the wellbore is in a stabilized condition with no flow of gas and/or water before spotting the next plug. If flow occurs, the fluid weight must be increased until a stabilized condition is established.
- 2) Following the plug over the Fruitland Formation Top, and prior to the plug over the Kirtland and Ojo Alamo Tops:
  - a. Operations will cease for 30 minutes allowing the Bradenhead to be observed for pressure build.
  - b. Pressures will be recorded with a crystal gauge for accuracy.
  - c. If pressures are observed, notify Wells Engineer and Production Engineering for path-forward discussion with NMOCD.
- 3) Within 24 hours of the abandonment and after two weeks, BLM will check for the presence of gas at the base of the dry hole marker and at the weep hole. Note ambient weather conditions when recording the results. If gas is detected, contact the Engineer.
- 4) If a Cathodic Protection well is on the well pad, check for the presence of gas at the vent cap. If gas is present, record results in AFMSS and contact the Engineer.

Note: when checking any sample point for the presence of gas, please be prepared for the possibility of anomalous pressure and the H<sub>2</sub>S gas.

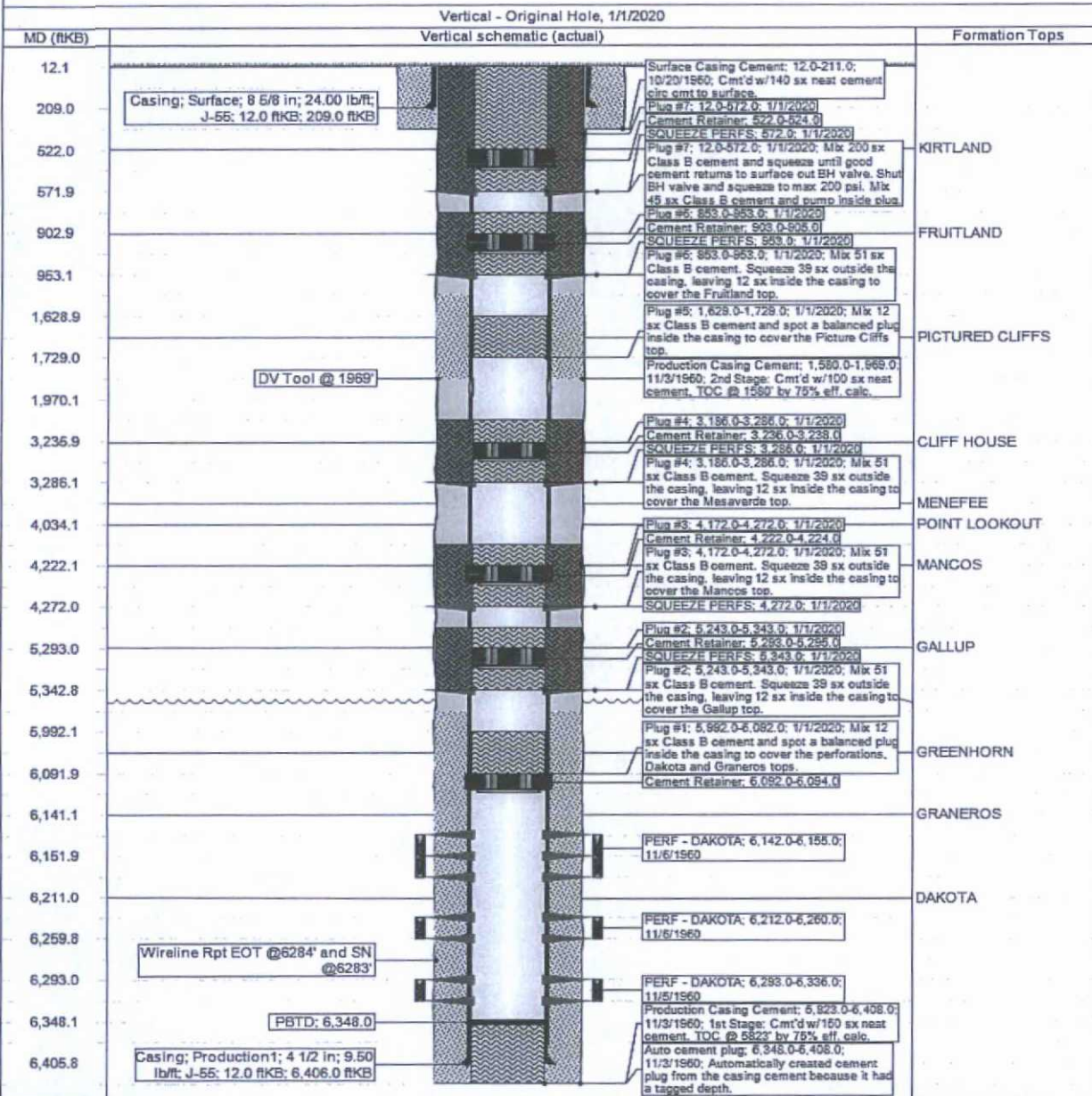


District NORTH	Field Name DK	API / UWI 3004508220	County SAN JUAN	State/Province NEW MEXICO
Original Spud Date 10/11/1960	Surface Legal Location 013-029N-012W-M	East/West Distance (ft) 990.00	East/West Reference FWL	North/South Distance (ft) 990.00
				North/South Reference FSL

Vertical - Original Hole, 3/14/2016 8:29:10 AM



District NORTH	Field Name DK	API / UWI 3004508220	County SAN JUAN	State/Province NEW MEXICO
Original Spud Date 10/11/1960	Surface Legal Location 013-029N-012W-M	East/West Distance (ft) 990.00	East/West Reference FWL	North/South Distance (ft) 990.00
			North/South Reference FSL	





UNITED STATES DEPARTMENT OF THE INTERIOR  
BUREAU OF LAND MANAGEMENT  
FARMINGTON DISTRICT OFFICE  
6251 COLLEGE BLVD.  
FARMINGTON, NEW MEXICO 87402

Attachment to notice of  
Intention to Abandon:

Re: Permanent Abandonment  
Well: Reid #1

CONDITIONS OF APPROVAL

1. Plugging operations authorized are subject to the attached "General Requirements for Permanent Abandonment of Wells on Federal and Indian Lease."
2. Farmington Office is to be notified at least 24 hours before the plugging operations commence (505) 564-7750.
3. The following modifications to your plugging program are to be made:
  - a) Set plug #2 (5365-5265) ft. inside/outside to cover the Gallup Formation top. BLM picks top of Gallup at 5315 ft.
  - b) Set plug #3 (4471-4371) ft. inside/outside to cover Mancos Formation top. BLM picks top of Mancos at 4421 ft.
  - c) Set plug #4 (3301-3201) ft. inside/outside to cover Mesa Verde Formation top. BLM picks top of Cliff House at 3251 ft.
  - d) Set plug #6 (1367-1267) ft. inside/outside to cover Fruitland Formation top. BLM picks top of Fruitland at 1317 ft.

Operator will run CBL from CR @ 6,092 ft. to surface to identify TOC.

H<sub>2</sub>S has not been reported at this location, however, very high concentrations of H<sub>2</sub>S (900 ppm GSV) have been reported in the Cliff House Ss at the Crawford GC B #1 well located in the NWSW/4 Sec. 24, 28N, 12W. It is imperative that H<sub>2</sub>S monitoring and safety equipment be on location during P&A operations at this well site.

You are also required to place cement excesses per 4.2 and 4.4 of the attached General Requirements.

Office Hours: 7:45 a.m. to 4:30 p.m.