

WELL NAME: Howard Federal 43-15 #1A

ARI #: 30-039-29700

920' FNL, 1640' FEL

LOCATION: NWNE Sec 15, T25N, R2W

FIELD: Blanco Mesaverde

GL: 7313'

KB: 7326.5'

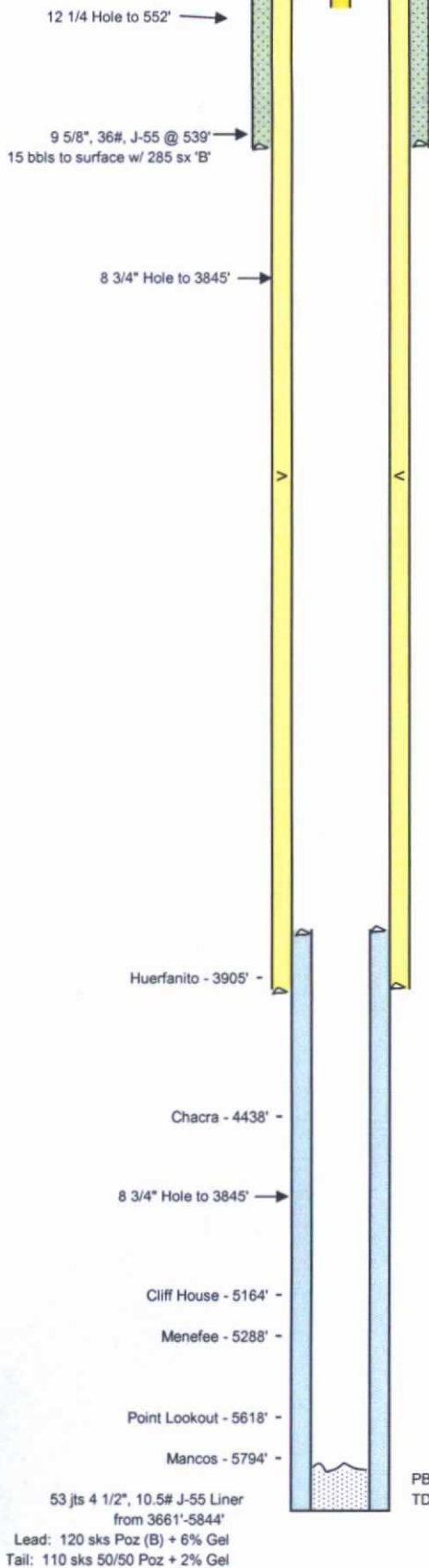
API NO: 30-039-29700

Fed Lse No.: SF079335A CA#: NMNM076430

PBTD: 5843'

TD: 5922'

Surveys:	
Degrees	Depth Ft
1 1/4	507
1	1004
1 1/4	1505
2	2005
2 1/4	2503
2	3001
3/4	3500
3/4	3813



WELL HISTORY

Spudded 1/17/2006. Drilled 12 1/4" surface hole to 552'. Ran 12 casing and landed at 539'. Cemented with 285 sks (60 bbls) CI "Flocele. 1.18 cuft/sk; 15.6 #/gal. Circulated 28 bbls of cement to hole to 3845. Strapped out and noted a few tight spots on bottom bridges at 3063' and 3437' on short trip. RIH with 87 jts of 7", 20 and landed at 33835' with a DV tool at 1923'. RU Halliburton ar 210 sks (79 bbls) 65/35 Poz (B) + 6% gel + 5 #/sk Gilsonite + 1/4 12.19 ppg; 2.12 cuft/sk followed by 100 sks (22 bbls) CI "B" + 5 #/ Flocele mixed at 15.2 ppg; 1.26 cuft/sk. Opened DV and cement sks (89 bbls) Econolite + 10 #/sk Gilsonite + 1/4 #/sk Flocele mix cuft/sk followed by 50 sks (11 bbls) CI "B" + 5 #/sk Gilsonite + 1/4 15.2 ppg; 1.26 cuft/sk. Full returns on 2nd stage with 43 bbls of c pit. Drilled out with air hammer and 6 1/4" bit to TD at 5922'. RIH 10.5#, J-55 liner and landed at 5863' with TOL at 3685'. Cement 65/35 Poz (B) + 6% gel + 5 #/sk Gilsonite + 1/4 #/sk Flocele mix cuft/sk followed by 110 sks (26 bbls) 50/50 Poz + 2% gel + 0.4% I + 1/4 #/sk Flocele mixed at 13.5 ppg; 1.32 cuft/sk. Circulated 5 b RDMORT 1/27/06.

DV tool @ 1923'
 Stage 2 Lead: 236 sks Econolite +
 10#/sk Gilsonite + 1/4 #/sk Flake
 Tail: 50 sks "B" + 5#/sk Gilsonite + 1/4 #/sk
 Flake
 (43 bbls of cement to surface on 2nd Stage)

TOL @ 3685'
 7", 20#, J-55 @ 3835'
 Stage 1 Lead: 210 sks 65/35 Poz (B) +
 6% gel + 5#/sk Gilsonite + 1/4 #/sk Flake
 Tail: 100 sks "B" + 5#/sk Gilsonite + 1/4 #/sk
 Flake

PBTD 5843' (FC)
 TD 5922'

Prepared by: RLM

Date: 8/24/2006