

MC Com 8 #410H
Basin MC/Lybrook GL
(page 1)

Spud: 1/5/16

Completed: 3/21/16

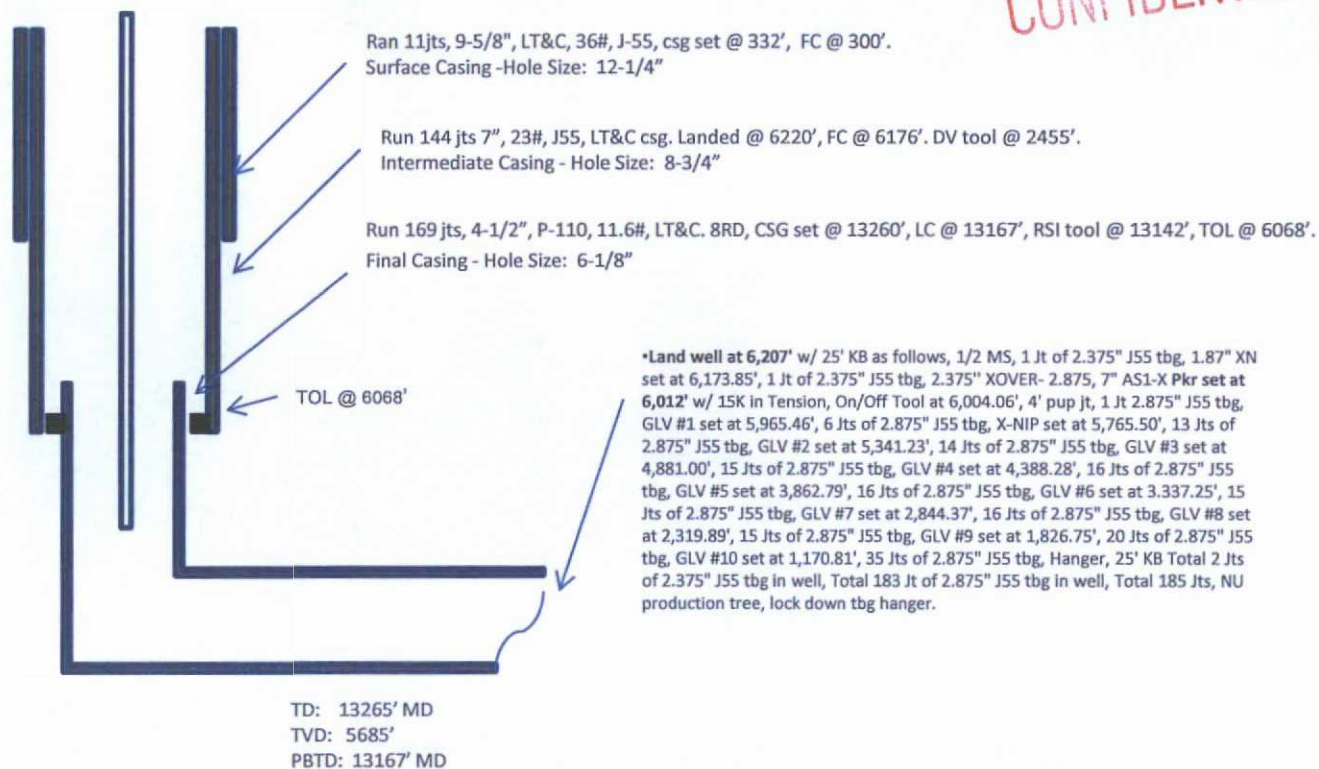
CONFIDENTIAL

SHL: 956' FSL & 2223' FWL
SE/4 SW/4 Section 7 (N), T23N, R7W

BHL: 1166' FSL & 333' FWL
SW/4 SW/4 Section 12 (M), T23N, R8W

Rio Arriba/San Juan NM
Elevation: 7307'
API: 30-039-31340

Formation	MD	TVD
OJO ALAMO	1458	1446
KIRTLAND	1811	1791
PICTURE CLIFFS	2155	2127
LEWIS	2275	2244
CHACRA	2582	2545
CLIFF HOUSE	3666	3607
MENEFEE	3719	3659
PT LOOKOUT	4547	4470
MANCOS	4784	4702
GALLUP	5132	5047

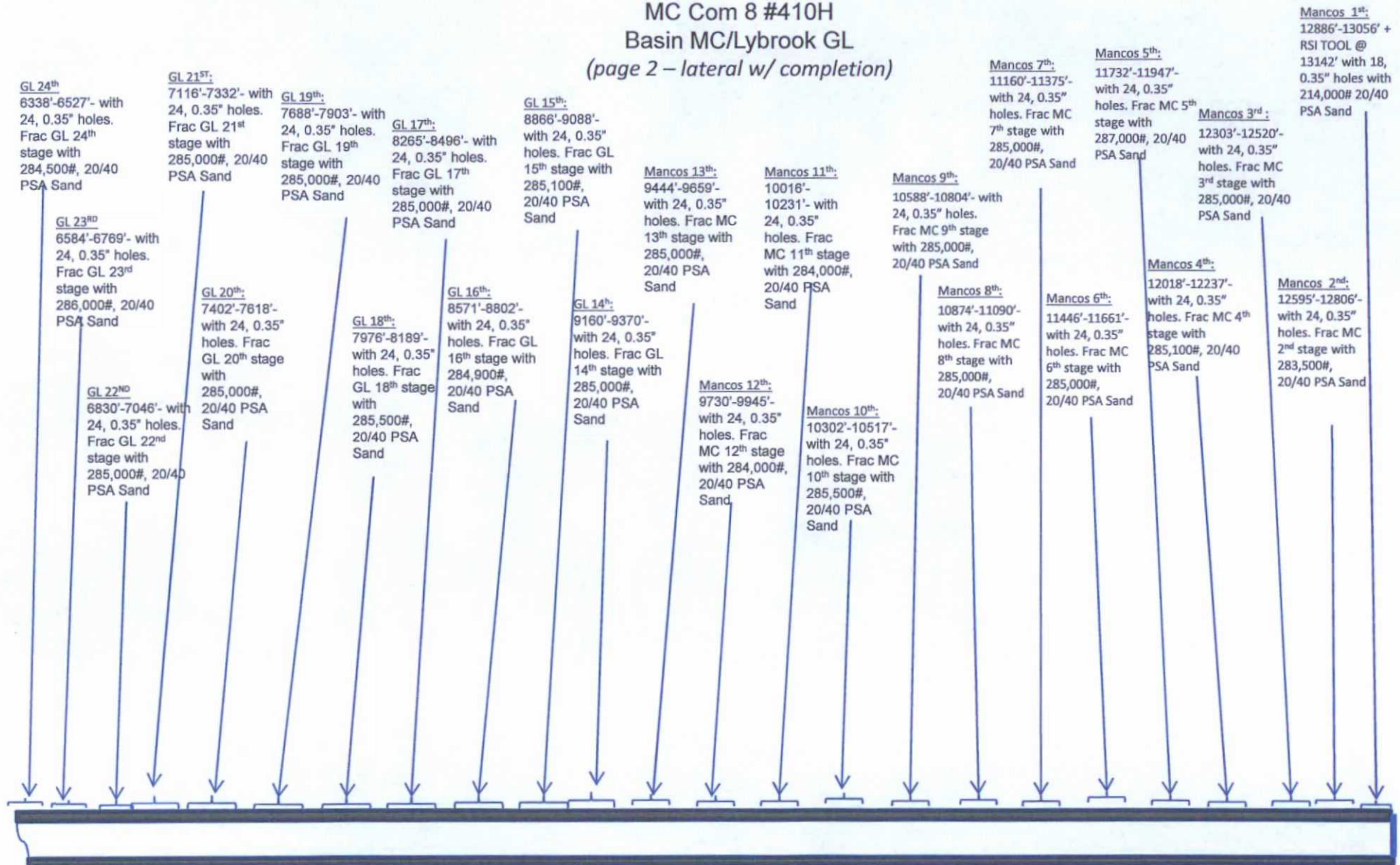


HOLE SIZE	CASING	CEMENT	VOLUME	CMT TOP
12-1/4"	9-5/8"	10 lxs	163 cu.ft.	Surface
8-3/4"	7"	885 sx	1479 cu.ft.	Surface
6-1/8"	4-1/2"	650sx	884 cu.ft.	TOL 6068'

Lg 3/21/16

N

MC Com 8 #410H
Basin MC/Lybrook GL
(page 2 – lateral w/ completion)



See page 1 for upper portion of hole