

UNITED STATES
DEPARTMENT OF THE INTERIOR
BUREAU OF LAND MANAGEMENT**Carlsbad Field Office**
OCD Artesia
FORM APPROVED
BLM Form 1004-0135
Expires: July 31, 2010
Serial No.
NMNM62589**SUNDRY NOTICES AND REPORTS ON WELLS**
*Do not use this form for proposals to drill or to re-enter an abandoned well. Use form 3160-3 (APD) for such proposals.***SUBMIT IN TRIPLICATE - Other instructions on reverse side.**

1. Type of Well <input checked="" type="checkbox"/> Oil Well <input type="checkbox"/> Gas Well <input type="checkbox"/> Other		8. Well Name and No. FEDERAL 23 1
2. Name of Operator OXY USA INCORPORATED		9. API Well No. 30-015-26377-00-S1
3a. Address 5 GREENWAY PLAZA SUITE 110 HOUSTON, TX 77046-0521		10. Field and Pool, or Exploratory LIVINGSTON RIDGE
3b. Phone No. (include area code) Ph: 713-366-5945		11. County or Parish, and State EDDY COUNTY, NM
4. Location of Well (Footage, Sec., T., R., M., or Survey Description) Sec 23 T22S R31E SESE 660FSL 660FEL		

12. CHECK APPROPRIATE BOX(ES) TO INDICATE NATURE OF NOTICE, REPORT, OR OTHER DATA

TYPE OF SUBMISSION	TYPE OF ACTION			
<input checked="" type="checkbox"/> Notice of Intent	<input type="checkbox"/> Acidize	<input type="checkbox"/> Deepen	<input type="checkbox"/> Production (Start/Resume)	<input type="checkbox"/> Water Shut-Off
<input type="checkbox"/> Subsequent Report	<input type="checkbox"/> Alter Casing	<input type="checkbox"/> Fracture Treat	<input type="checkbox"/> Reclamation	<input type="checkbox"/> Well Integrity
<input type="checkbox"/> Final Abandonment Notice	<input type="checkbox"/> Casing Repair	<input type="checkbox"/> New Construction	<input type="checkbox"/> Recomplete	<input checked="" type="checkbox"/> Other
	<input type="checkbox"/> Change Plans	<input type="checkbox"/> Plug and Abandon	<input type="checkbox"/> Temporarily Abandon	Onshore Order Variance
	<input type="checkbox"/> Convert to Injection	<input type="checkbox"/> Plug Back	<input type="checkbox"/> Water Disposal	

13. Describe Proposed or Completed Operation (clearly state all pertinent details, including estimated starting date of any proposed work and approximate duration thereof. If the proposal is to deepen directionally or recompleat horizontally, give subsurface locations and measured and true vertical depths of all pertinent markers and zones. Attach the Bond under which the work will be performed or provide the Bond No. on file with BLM/BIA. Required subsequent reports shall be filed within 30 days following completion of the involved operations. If the operation results in a multiple completion or recompleat in a new interval, a Form 3160-4 shall be filed once testing has been completed. Final Abandonment Notices shall be filed only after all requirements, including reclamation, have been completed, and the operator has determined that the site is ready for final inspection.)

In response to Written Order #16JH169W, Oxy requests approval for custody transfer point, meter serial number 14971X, to be known as Facility Measurement Point (FMP), for gas on the above-mentioned battery as per discussion with Duncan Whitlock. Meter requirements meet Onshore Order #5 and API standards. Royalty to BLM will be paid off of this meter.

Facility diagram and lease map are attached.

NM OIL CONSERVATION
ARTESIA DISTRICT**JUL 29 2016****RECEIVED**

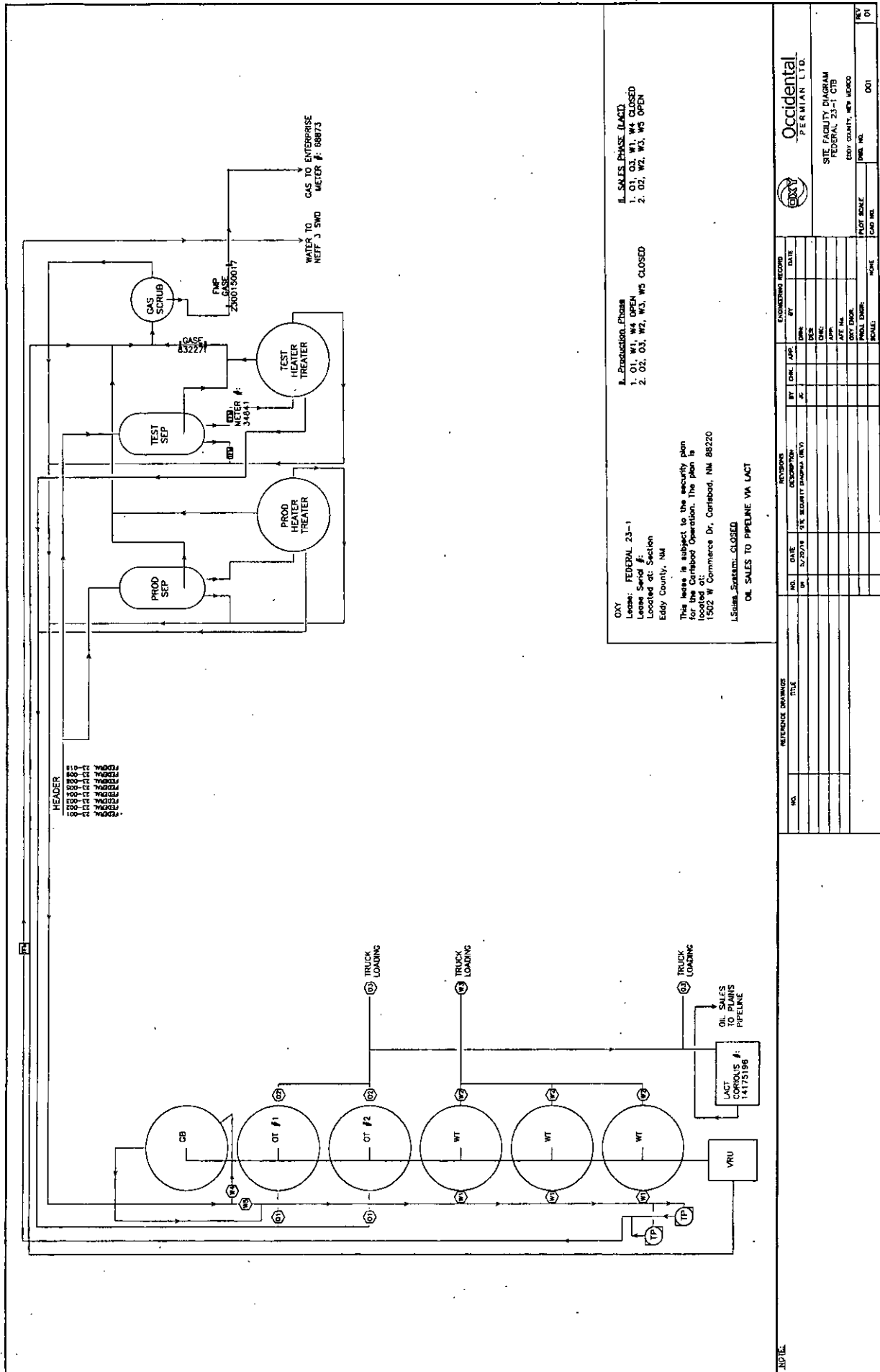
14. I hereby certify that the foregoing is true and correct. Electronic Submission #340758 verified by the BLM Well Information System For OXY USA INCORPORATED, sent to the Carlsbad Committed to AFMSS for processing by PRISCILLA PEREZ on 06/01/2016 (16PP1336SE)	
Name (Printed/Typed) TAYLOR STILLMAN	Title PRODUCTION ENGINEER
Signature (Electronic Submission)	Date 05/31/2016

THIS SPACE FOR FEDERAL OR STATE OFFICE USE

Approved By <u>DUNCAN WHITLOCK</u>	Title <u>TECHNICAL LPET</u>	Date <u>07/26/2016</u>
Conditions of approval, if any, are attached. Approval of this notice does not warrant or certify that the applicant holds legal or equitable title to those rights in the subject lease which would entitle the applicant to conduct operations thereon.		Office Carlsbad

Title 18 U.S.C. Section 1001 and Title 43 U.S.C. Section 1212, make it a crime for any person knowingly and willfully to make to any department or agency of the United States any false, fictitious or fraudulent statements or representations as to any matter within its jurisdiction.

**** BLM REVISED ** BLM REVISED ** BLM REVISED ** BLM REVISED ** BLM REVISED ****



OXY
 Lease: FEDERAL 23-1
 Lease Serial #: 1502
 Located at: Section
 Eddy County, NM

This lease is subject to the security plan
 for the Caribbood Operation. The plan is
 located at:
 1502 W Commerce Dr, Caribbood, NM 88220

L.S. Sales - Surrender - CLOSED
 OIL SALES TO PIPELINE VIA LACT

B. Production Phases
 1. OIL, WT, & GAS
 2. OIL, WT, & GAS, WGS CLOSED

II. Sales Phases (LACT)
 1. OIL, WT, & GAS
 2. OIL, WT, & GAS, WGS OPEN

REFERENCE DRAWING		REVISION		DRAWING RECORD	
NO.	TITLE	DATE	BY	CHK	DATE
1	1/2/78	1/2/78	1/2/78	1/2/78	1/2/78
2	1/2/78	1/2/78	1/2/78	1/2/78	1/2/78
3	1/2/78	1/2/78	1/2/78	1/2/78	1/2/78
4	1/2/78	1/2/78	1/2/78	1/2/78	1/2/78
5	1/2/78	1/2/78	1/2/78	1/2/78	1/2/78
6	1/2/78	1/2/78	1/2/78	1/2/78	1/2/78
7	1/2/78	1/2/78	1/2/78	1/2/78	1/2/78
8	1/2/78	1/2/78	1/2/78	1/2/78	1/2/78
9	1/2/78	1/2/78	1/2/78	1/2/78	1/2/78
10	1/2/78	1/2/78	1/2/78	1/2/78	1/2/78
11	1/2/78	1/2/78	1/2/78	1/2/78	1/2/78
12	1/2/78	1/2/78	1/2/78	1/2/78	1/2/78
13	1/2/78	1/2/78	1/2/78	1/2/78	1/2/78
14	1/2/78	1/2/78	1/2/78	1/2/78	1/2/78
15	1/2/78	1/2/78	1/2/78	1/2/78	1/2/78
16	1/2/78	1/2/78	1/2/78	1/2/78	1/2/78
17	1/2/78	1/2/78	1/2/78	1/2/78	1/2/78
18	1/2/78	1/2/78	1/2/78	1/2/78	1/2/78
19	1/2/78	1/2/78	1/2/78	1/2/78	1/2/78
20	1/2/78	1/2/78	1/2/78	1/2/78	1/2/78
21	1/2/78	1/2/78	1/2/78	1/2/78	1/2/78
22	1/2/78	1/2/78	1/2/78	1/2/78	1/2/78
23	1/2/78	1/2/78	1/2/78	1/2/78	1/2/78
24	1/2/78	1/2/78	1/2/78	1/2/78	1/2/78
25	1/2/78	1/2/78	1/2/78	1/2/78	1/2/78
26	1/2/78	1/2/78	1/2/78	1/2/78	1/2/78
27	1/2/78	1/2/78	1/2/78	1/2/78	1/2/78
28	1/2/78	1/2/78	1/2/78	1/2/78	1/2/78
29	1/2/78	1/2/78	1/2/78	1/2/78	1/2/78
30	1/2/78	1/2/78	1/2/78	1/2/78	1/2/78
31	1/2/78	1/2/78	1/2/78	1/2/78	1/2/78
32	1/2/78	1/2/78	1/2/78	1/2/78	1/2/78
33	1/2/78	1/2/78	1/2/78	1/2/78	1/2/78
34	1/2/78	1/2/78	1/2/78	1/2/78	1/2/78
35	1/2/78	1/2/78	1/2/78	1/2/78	1/2/78
36	1/2/78	1/2/78	1/2/78	1/2/78	1/2/78
37	1/2/78	1/2/78	1/2/78	1/2/78	1/2/78
38	1/2/78	1/2/78	1/2/78	1/2/78	1/2/78
39	1/2/78	1/2/78	1/2/78	1/2/78	1/2/78
40	1/2/78	1/2/78	1/2/78	1/2/78	1/2/78
41	1/2/78	1/2/78	1/2/78	1/2/78	1/2/78
42	1/2/78	1/2/78	1/2/78	1/2/78	1/2/78
43	1/2/78	1/2/78	1/2/78	1/2/78	1/2/78
44	1/2/78	1/2/78	1/2/78	1/2/78	1/2/78
45	1/2/78	1/2/78	1/2/78	1/2/78	1/2/78
46	1/2/78	1/2/78	1/2/78	1/2/78	1/2/78
47	1/2/78	1/2/78	1/2/78	1/2/78	1/2/78
48	1/2/78	1/2/78	1/2/78	1/2/78	1/2/78
49	1/2/78	1/2/78	1/2/78	1/2/78	1/2/78
50	1/2/78	1/2/78	1/2/78	1/2/78	1/2/78
51	1/2/78	1/2/78	1/2/78	1/2/78	1/2/78
52	1/2/78	1/2/78	1/2/78	1/2/78	1/2/78
53	1/2/78	1/2/78	1/2/78	1/2/78	1/2/78
54	1/2/78	1/2/78	1/2/78	1/2/78	1/2/78
55	1/2/78	1/2/78	1/2/78	1/2/78	1/2/78
56	1/2/78	1/2/78	1/2/78	1/2/78	1/2/78
57	1/2/78	1/2/78	1/2/78	1/2/78	1/2/78
58	1/2/78	1/2/78	1/2/78	1/2/78	1/2/78
59	1/2/78	1/2/78	1/2/78	1/2/78	1/2/78
60	1/2/78	1/2/78	1/2/78	1/2/78	1/2/78
61	1/2/78	1/2/78	1/2/78	1/2/78	1/2/78
62	1/2/78	1/2/78	1/2/78	1/2/78	1/2/78
63	1/2/78	1/2/78	1/2/78	1/2/78	1/2/78
64	1/2/78	1/2/78	1/2/78	1/2/78	1/2/78
65	1/2/78	1/2/78	1/2/78	1/2/78	1/2/78
66	1/2/78	1/2/78	1/2/78	1/2/78	1/2/78
67	1/2/78	1/2/78	1/2/78	1/2/78	1/2/78
68	1/2/78	1/2/78	1/2/78	1/2/78	1/2/78
69	1/2/78	1/2/78	1/2/78	1/2/78	1/2/78
70	1/2/78	1/2/78	1/2/78	1/2/78	1/2/78
71	1/2/78	1/2/78	1/2/78	1/2/78	1/2/78
72	1/2/78	1/2/78	1/2/78	1/2/78	1/2/78
73	1/2/78	1/2/78	1/2/78	1/2/78	1/2/78
74	1/2/78	1/2/78	1/2/78	1/2/78	1/2/78
75	1/2/78	1/2/78	1/2/78	1/2/78	1/2/78
76	1/2/78	1/2/78	1/2/78	1/2/78	1/2/78
77	1/2/78	1/2/78	1/2/78	1/2/78	1/2/78
78	1/2/78	1/2/78	1/2/78	1/2/78	1/2/78
79	1/2/78	1/2/78	1/2/78	1/2/78	1/2/78
80	1/2/78	1/2/78	1/2/78	1/2/78	1/2/78
81	1/2/78	1/2/78	1/2/78	1/2/78	1/2/78
82	1/2/78	1/2/78	1/2/78	1/2/78	1/2/78
83	1/2/78	1/2/78	1/2/78	1/2/78	1/2/78
84	1/2/78	1/2/78	1/2/78	1/2/78	1/2/78
85	1/2/78	1/2/78	1/2/78	1/2/78	1/2/78
86	1/2/78	1/2/78	1/2/78	1/2/78	1/2/78
87	1/2/78	1/2/78	1/2/78	1/2/78	1/2/78
88	1/2/78	1/2/78	1/2/78	1/2/78	1/2/78
89	1/2/78	1/2/78	1/2/78	1/2/78	1/2/78
90	1/2/78	1/2/78	1/2/78	1/2/78	1/2/78
91	1/2/78	1/2/78	1/2/78	1/2/78	1/2/78
92	1/2/78	1/2/78	1/2/78	1/2/78	1/2/78
93	1/2/78	1/2/78	1/2/78	1/2/78	1/2/78
94	1/2/78	1/2/78	1/2/78	1/2/78	1/2/78
95	1/2/78	1/2/78	1/2/78	1/2/78	1/2/78
96	1/2/78	1/2/78	1/2/78	1/2/78	1/2/78
97	1/2/78	1/2/78	1/2/78	1/2/78	1/2/78
98	1/2/78	1/2/78	1/2/78	1/2/78	1/2/78
99	1/2/78	1/2/78	1/2/78	1/2/78	1/2/78
100	1/2/78	1/2/78	1/2/78	1/2/78	1/2/78

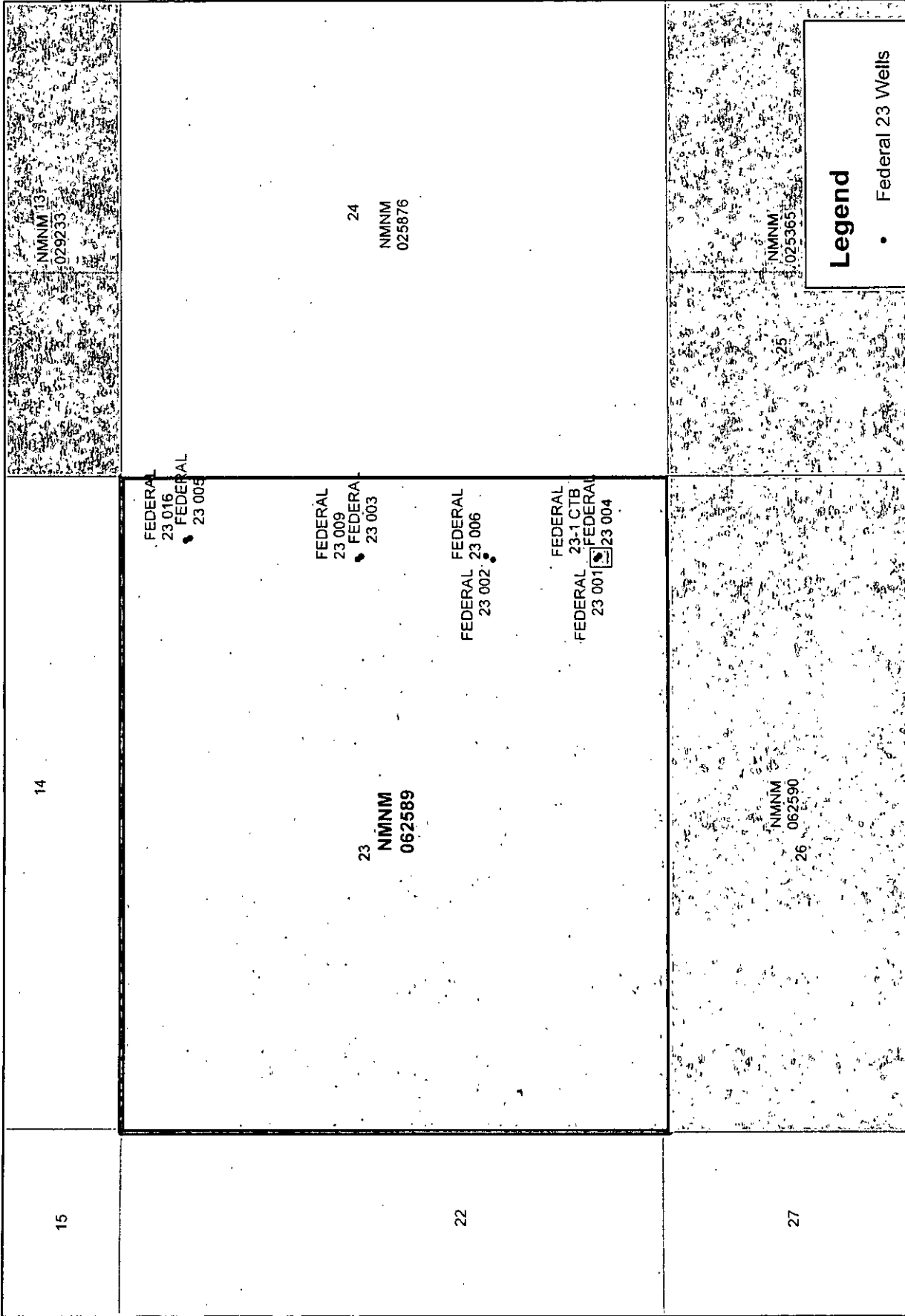
Occidental
 PERMIAN LTD.

SITE FACILITY DIAGRAM
 FEDERAL 23-1 CTB
 EDDY COUNTY, NEW MEXICO

DATE SCALE
 001

REV
 01

Federal 23-1 NIMNM 062589



Legend

- Federal 23 Wells
- ◻ Federal 23-1 CTB

