

W LYBROOK UT #707H

Lybrook Mancos W

(page 1)

Spud: 2/17/16

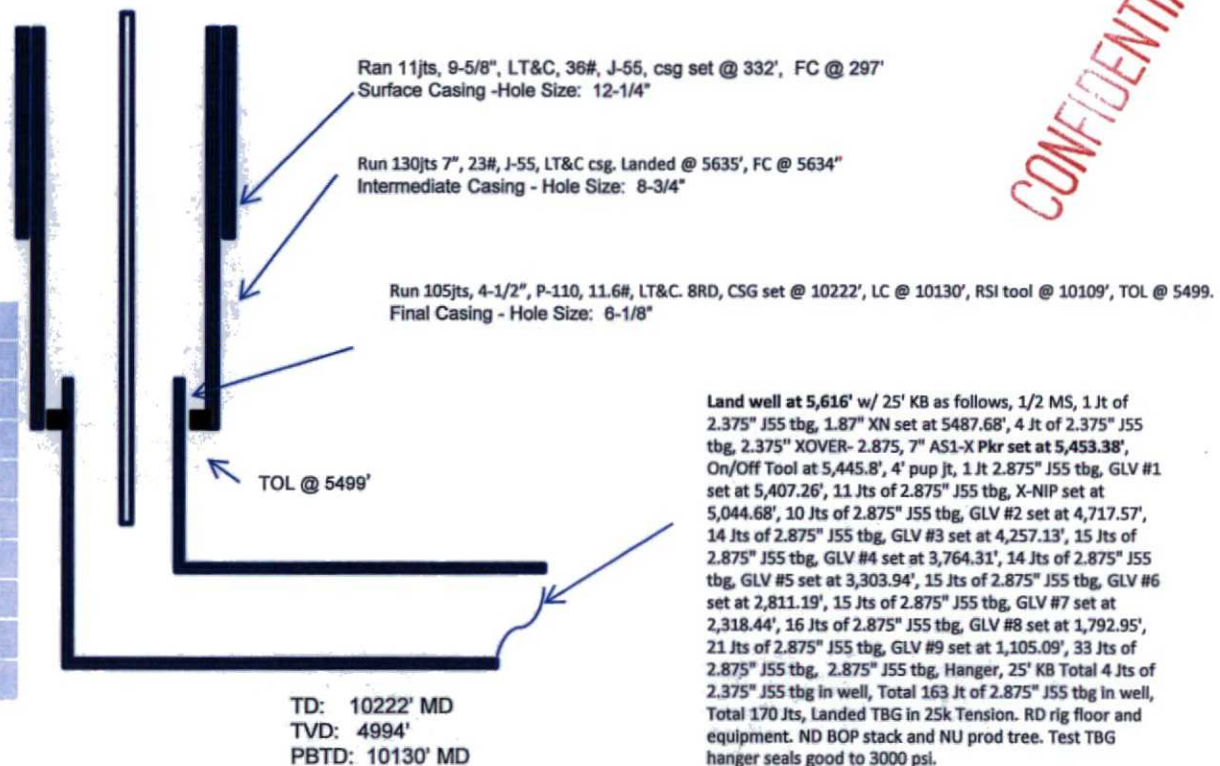
Completed: 6/27/16

SHL: 877' FSL & 366' FEL
SE/4 SE/4 Section 12(P), T23N, R9W

BHL: 339' FNL & 2325' FWL
NE/4 NW/4 Section 12 (C), T23N, R9W

San Juan, NM
Elevation: 6733'
API: 30-045-35739

Tops	MD	TVD
OJO ALIMO	622	622
KIRTLAND	774	774
PICTURE CLIFFS	1281	1271
LEWIS	1437	1420
CHACRA	1664	1633
CLIFF HOUSE	2859	2749
MENEFEE	2878	2767
POINT LOOKOUT	3874	3697
MANCOS	4059	3870
GALLUP	4428	4216



CONFIDENTIAL

HOLE SIZE	CASING	CEMENT	VOLUME	CMT TOP
12-1/4"	9-5/8"	101sx	162cu.ft.	Surface
8-3/4"	7"	815 sx	1329cu. ft.	Surface
6-1/8"	4-1/2"	430sx	584 cu. ft.	TOL 5499'

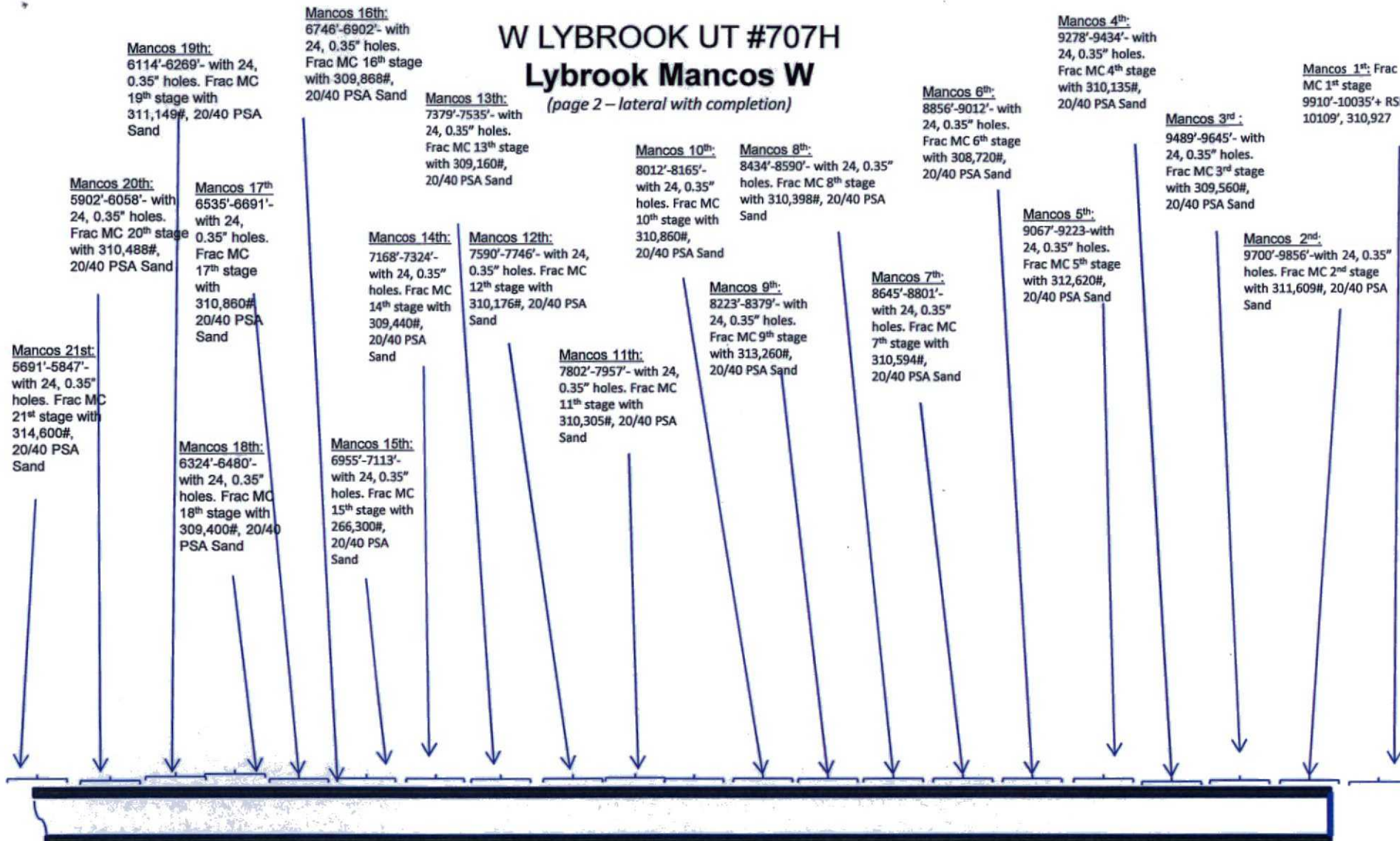
LG 6/29/16

AV

W LYBROOK UT #707H

Lybrook Mancos W

(page 2 – lateral with completion)



See page 1 for upper portion of hole