

W LYBROOK UT #709H

Lybrook Mancos W

(page 1)

Spud: 2/18/16

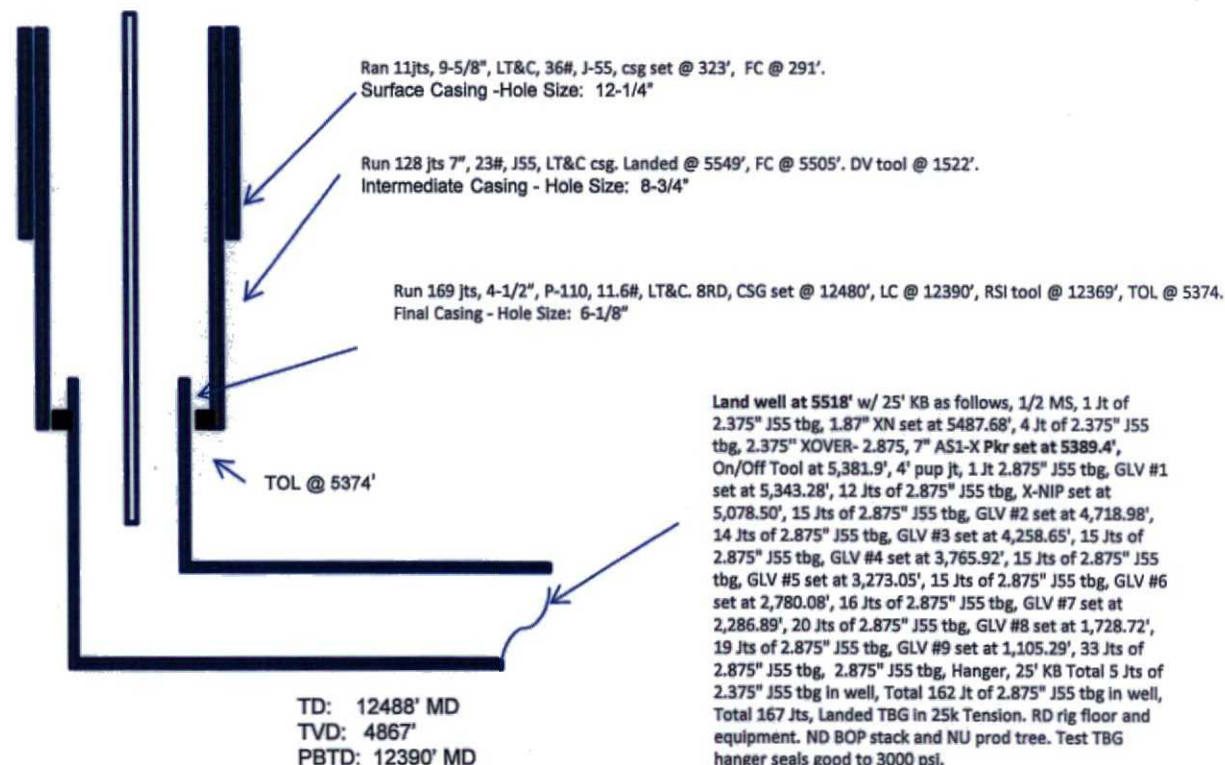
Completed: 6/23/16

SHL: 836' FSL & 461' FEL
SE/4 SE/4 Section 12(P), T23N, R9W

BHL: 336' FNL & 964' FEL
NE/4 NE/4 Section 11 (A), T23N, R9W

San Juan, NM
Elevation: 6733'
API: 30-045-35741

Tops	MD	TVD
OJO ALIMO	589	589
KIRTLAND	756	754
PICTURE CLIFFS	1278	1263
LEWIS	1437	1413
CHACRA	1660	1621
CLIFF HOUSE	2862	2727
MENEFEE	2883	2746
POINT LOOKOUT	3856	3653
MANCOS	4037	3822
MC	4400	4173



HOLE SIZE	CASING	CEMENT	VOLUME	CMT TOP
12-1/4"	9-5/8"	10 lsx	162cu.ft.	Surface
8-3/4"	7"	940 sx	1550cu. ft.	Surface
6-1/8"	4-1/2"	645 sx	876 cu. ft.	TOL 5374'

LG 6/27/16

CONFIDENTIAL

2

3

W LYBROOK UT #709H

Lybrook Mancos W

(page 2 – lateral with completion)

MC 15th:

9311'-9461'- with 24, 0.35" holes. Frac MC 15th stage with 138,113#, 20/40 PSA Sand

MC 13th:

9719'-9875'- with 24, 0.35" holes. Frac MC 13th stage with 214,750#, 20/40 PSA Sand

MC 11th:

10131'-10287'- with 24, 0.35" holes. Frac MC 11th stage with 214,777#, 20/40 PSA Sand

MC 8th:

10750'-10905'- with 24, 0.35" holes. Frac MC 8th stage with 209,840#, 20/40 PSA Sand

MC 4th:

11573'-11724'- with 24, 0.35" holes. Frac MC 4th stage with 215,960#, 20/40 PSA Sand

MC 1st:

12191'-12295' + RSI TOOL @ 12369' with 214,276# 20/40 PSA Sand

MC 9th:

10543'-10696'- with 24, 0.35" holes. Frac MC 9th stage with 215,740#, 20/40 PSA Sand

MC 6th:

11161'-11317'- with 24, 0.35" holes. Frac MC 6th stage with 214,955#, 20/40 PSA Sand

MC 3rd:

11779'-11935'- with 24, 0.35" holes. Frac MC 3rd stage with 215,040#, 20/40 PSA Sand

MC 14th:

9513'-9670'- with 24, 0.35" holes. Frac MC 14th stage with 214,926#, 20/40 PSA Sand

MC 12th:

9925'-10082'- with 24, 0.35" holes. Frac MC 12th stage with 213,600#, 20/40 PSA Sand

MC 7th:

19555'-11111'- with 24, 0.35" holes. Frac MC 7th stage with 211,600#, 20/40 PSA Sand

MC 10th:

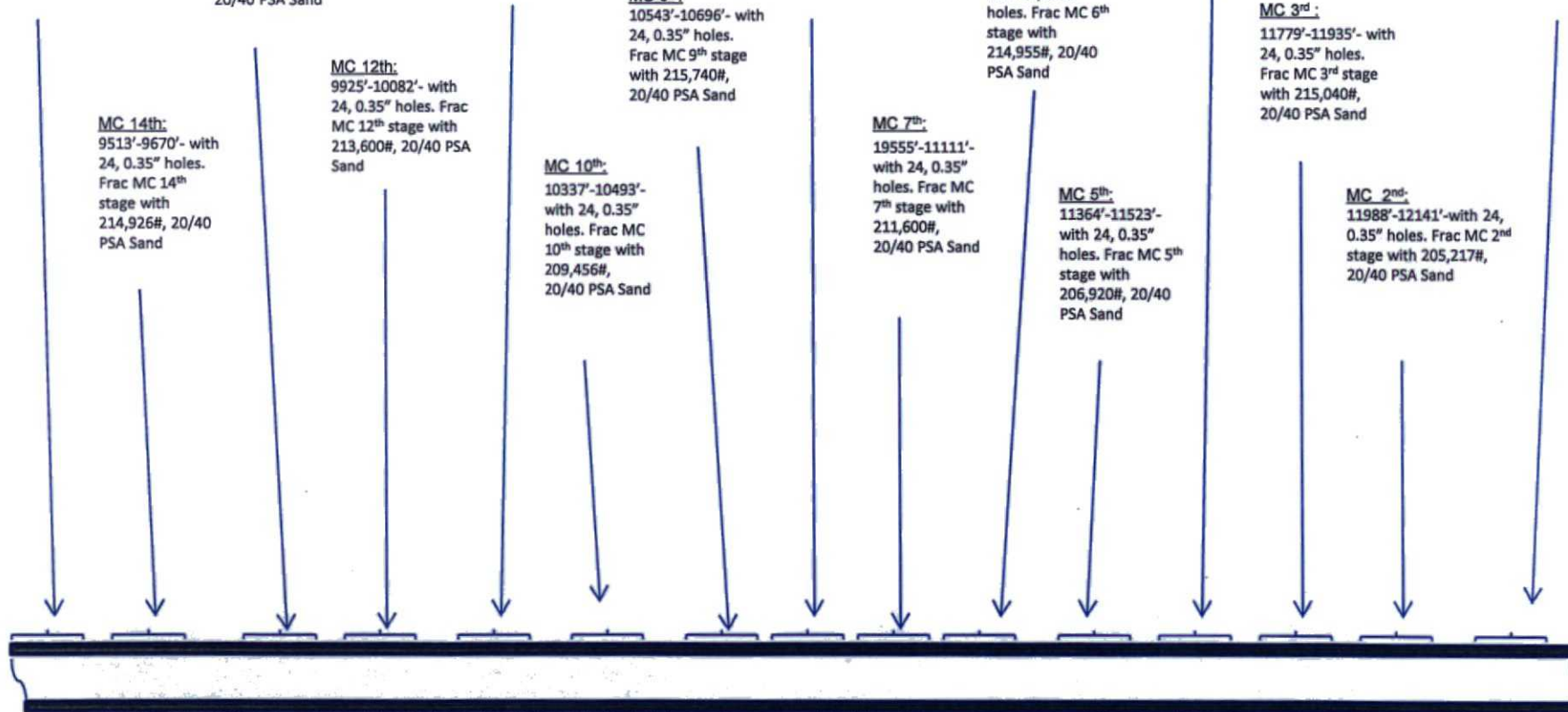
10337'-10493'- with 24, 0.35" holes. Frac MC 10th stage with 209,456#, 20/40 PSA Sand

MC 5th:

11364'-11523'- with 24, 0.35" holes. Frac MC 5th stage with 206,920#, 20/40 PSA Sand

MC 2nd:

11988'-12141'- with 24, 0.35" holes. Frac MC 2nd stage with 205,217#, 20/40 PSA Sand



See page 1 for upper portion of hole

W LYBROOK UT #709H

Lybrook Mancos W

(page 2 – lateral with completion)

MC 33rd :
5598'-5755'-
with 24,
0.35" holes.
Frac MC
33rd stage
with
215,000#,
20/40 PSA
Sand

MC 32nd :
5808'-5961'- with
24, 0.35" holes.
Frac MC 32nd
stage with
214,169#, 20/40
PSA Sand

MC 31st :
6011'-6167'-
with 24,
0.35" holes.
Frac MC
31st stage
with
214,478#,
20/40 PSA
Sand

MC 30th :
6217'-
6373'- with
24, 0.35" holes.
Frac MC 30th
stage with
210,140#,
20/40 PSA
Sand

MC 29th :
6423'-6579'-
with 24, 0.35"
holes. Frac
MC 29th stage
with 215,490#,
20/40 PSA
Sand

MC 28th :
6629'-6785'-
with 24, 0.35"
holes. Frac
MC 28th stage
with 214,577#,
20/40 PSA
Sand

MC 27th :
6840'-6991'-
with 24, 0.35"
holes. Frac MC
27th stage with
214,052#,
20/40 PSA
Sand

MC 26th :
7041'-7197'- with 24,
0.35" holes. Frac MC
26th stage with
212,720#, 20/40 PSA
Sand

MC 25th :
7247'-7402'- with
24, 0.35" holes.
Frac MC 25th
stage with
217,400#, 20/40
PSA Sand

MC 24th :
7454'-
7609'- with
24, 0.35"
holes. Frac
MC 24th
stage with
214,708#,
20/40 PSA
Sand

MC 23rd :
7653'-7808'-
with 24,
0.35" holes.
Frac MC
23rd stage
with
214,722#,
20/40 PSA
Sand

MC 22nd :
7865'-8021'- with
24, 0.35" holes.
Frac MC 22nd stage
with 215,800#,
20/40 PSA Sand

MC 21st :
8071'-8227'- with 24,
0.35" holes. Frac MC
21st stage with
211,800#, 20/40 PSA
Sand

MC 20th :
8277'-8433'- with
24, 0.35" holes.
Frac MC 20th
stage with
214,437#, 20/40
PSA Sand

MC 19th : -8483'-
8639'- with 24,
0.35" holes. Frac
MC 19th stage
with 215,080#,
20/40 PSA Sand

MC 18th :
8686'-8845'- with 24,
0.35" holes. Frac MC
18th stage with
216,140#, 20/40 PSA
Sand

MC 17th :
8895'-9051'- with 24,
0.35" holes. Frac MC
17th stage with
214,940#, 20/40 PSA
Sand

MC 16th :
9101'-9257'- with 24,
0.35" holes. Frac MC 16th
stage with 214,355#,
20/40 PSA Sand

See page 1 for upper portion of hole