

W Lybrook UT 747H

Lybrook Mancos W

(page 1)

Spud: 2/18/16

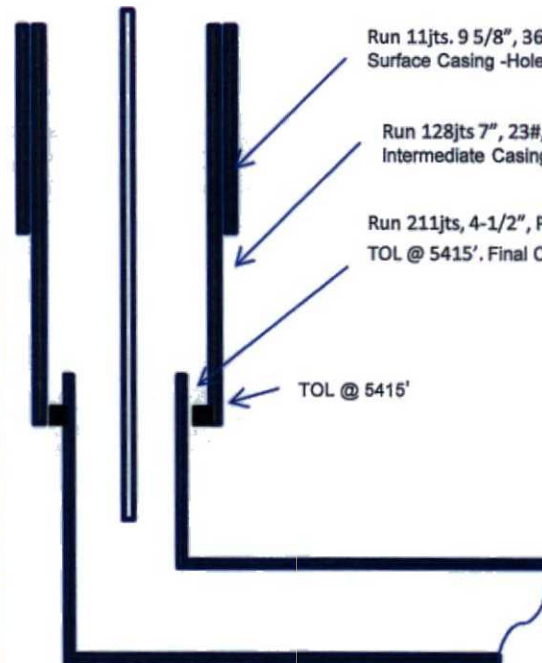
Completed: 7/1/16

SHL: 869' FSL & 385' FEL
SE/4 SE/4 Section 12 (P), T23N, R9W

BHL: 334' FSL & 1759' FWL
SW/4 SW/4 Section 17 (N), T23N, R8W

San Juan NM
Elevation: 6733'
API: 30-045-35742

Formation Top	MD	TVD
OJO ALAMO	617	616
KIRTLAND	765	763
PICTURE CLIFFS	1282	1270
LEWIS	1429	1412
CHACRA	1654	1627
CLIFF HOUSE	2854	2745
MENEFEE	2874	2764
PT LOOKOUT	3866	3695
MANCOS	4050	3869
GALLUP	4404	4213



Run 11jts. 9 5/8", 36# J-55 ST&C CSG SET @ 339', FC @ 307'
Surface Casing - Hole Size: 12-1/4"

Run 128jts 7", 23#, J55, LT&C csg. Landed @ 5564', FC @ 5519'
Intermediate Casing - Hole Size: 8-3/4"

Run 211jts, 4-1/2", P-110, 11.6#, LT&C. 8RD, CSG set @ 14816', LC @ 14725', RSI tool @ 14701',
TOL @ 5415'. Final Casing - Hole Size: 6-1/8"

TOL @ 5415'

*Land well at 5388' w/ 25' KB as follows, 1/2 MS, 1 Jt of 2.375" J55 tbg, 1.87" XN set at 5352.30', 4 Jt of 2.375" J55 tbg, 2.375" XOVER- 2.875, 7" AS1-X Pkr set at 5226.03', On/Off Tool at 5,218.53', 4' pup jt, 1 Jt 2.875" J55 tbg, GLV #1 set at 5,179.91', 9 Jts of 2.875" J55 tbg, X-NIP set at 4,882.63', 11 Jts of 2.875" J55 tbg, GLV #2 set at 4,523.04', 14 Jts of 2.875" J55 tbg, GLV #3 set at 4,062.65', 14 Jts of 2.875" J55 tbg, GLV #4 set at 3,602.25', 14 Jts of 2.875" J55 tbg, GLV #5 set at 3,141.94', 14 Jts of 2.875" J55 tbg, GLV #6 set at 2,681.73', 14 Jts of 2.875" J55 tbg, GLV #7 set at 2,221.35', 15 Jts of 2.875" J55 tbg, GLV #8 set at 1,728.49', 19 Jts of 2.875" J55 tbg, GLV #9 set at 1,105.11', 33 Jts of 2.875" J55 tbg, 2.875" J55 tbg, Hanger, 25' KB Total 4 Jts of 2.375" J55 tbg in well, Total 158 Jt of 2.875" J55 tbg in well, Total 162 Jts, Landed TBG in 25k Tension. RD rig floor and equipment. ND BOP stack and NU prod tree. Test TBG hanger seals good to 3000 psi.

TD: 14818 MD
TVD: 4906'
PBTD: 14725' MD

HOLE SIZE	CASING	CEMENT	VOLUME	CMT TOP
12-1/4"	9-5/8"	10 lxx	162 cuft	Surface
8-3/4"	7"	9 10sx	1514 cuft	Surface
6-1/8"	4-1/2"	8 55sx	1163 cuft	TOL 5415'

OIL CONS. DIV DIST. 3

JUL 13 2016

CONFIDENTIAL

MJ 7/5/16

AY

W Lybrook UT 747H
Lybrook Mancos W
(page 2 – lateral w/ completion)

Mancos 24th
9748'-9904'- w/ 24,
0.35" holes. Frac
Mancos 24th stage
w/ 210,439#, 20/40
PSA Sand

Mancos 21st
10366'-10520'- w/
24, 0.35" holes.
Frac Mancos 21st
stage w/ 212,980#,
20/40 PSA Sand

Mancos 19th
10778'-10934'- w/
24, 0.35" holes.
Frac Mancos 19th
stage w/ 214,660#,
20/40 PSA Sand

Mancos 17th
11190'-11346'- w/
24, 0.35" holes.
Frac Mancos 17th
stage w/
224,500#, 20/40
PSA Sand

Mancos 15th
11602'-11758'-
w/ 24, 0.35"
holes. Frac
Mancos 15th
stage w/
215,260#, 20/40
PSA Sand

Mancos 13th
12016'-12170'-
w/ 24, 0.35"
holes. Frac
Mancos 13th
stage w/
212,580#, 20/40
PSA Sand

Mancos 11th
12426'-12582'-
w/ 24, 0.35"
holes. Frac
Mancos 11th
stage w/
217,390#, 20/40
PSA Sand

Mancos 9th
12838'-12992'- w/
24, 0.35" holes.
Frac Mancos 9th
stage w/ 215,140#,
20/40 PSA Sand

Mancos 8th
13046'-13172'-
w/ 24, 0.35"
holes. Frac
Mancos 8th
stage w/
214,620#,
20/40 PSA Sand

Mancos 6th
13456'-13612'-
w/ 24, 0.35"
holes. Frac
Mancos 6th
stage w/
209,780#,
20/40 PSA Sand

Mancos 4th
13868'-14024'-
w/ 24, 0.35"
holes. Frac
Mancos 4th stage
w/ 211,760#,
20/40 PSA Sand

Mancos 2nd
14280'-14436'-
w/ 24, 0.35"
holes. Frac
Mancos 2nd
stage w/
214,259#,
20/40 PSA Sand

Mancos 5th
13662'-13818'-w/
24, 0.35" holes.
Frac Mancos 5th
stage w/
216,880#, 20/40
PSA Sand

Mancos 3rd
14074'-14230'-
w/ 24, 0.35"
holes. Frac
Mancos 3rd stage
w/ 214,699#,
20/40 PSA Sand

Mancos 1st
14496'-14620' +
RSI TOOL @
14701', w/ 18,
0.35" holes. Frac
Mancos 2nd stage
w/214,462#,
20/40 PSA Sand

Mancos 23rd
9954'-10110'- w/
24, 0.35" holes.
Frac Mancos 23rd
stage w/ 215,000#,
20/40 PSA Sand

Mancos 20th
10572'-10728'-
w/ 24, 0.35"
holes. Frac
Mancos 20th
stage w/
215,000#,
20/40 PSA Sand

Mancos 18th
10984'-11140'- w/
24, 0.35" holes.
Frac Mancos 18th
stage w/
217,499#, 20/40
PSA Sand

Mancos 16th
11400'-11552'-
w/ 24, 0.35"
holes. Frac
Mancos 16th
stage w/
214,647#, 20/40
PSA Sand

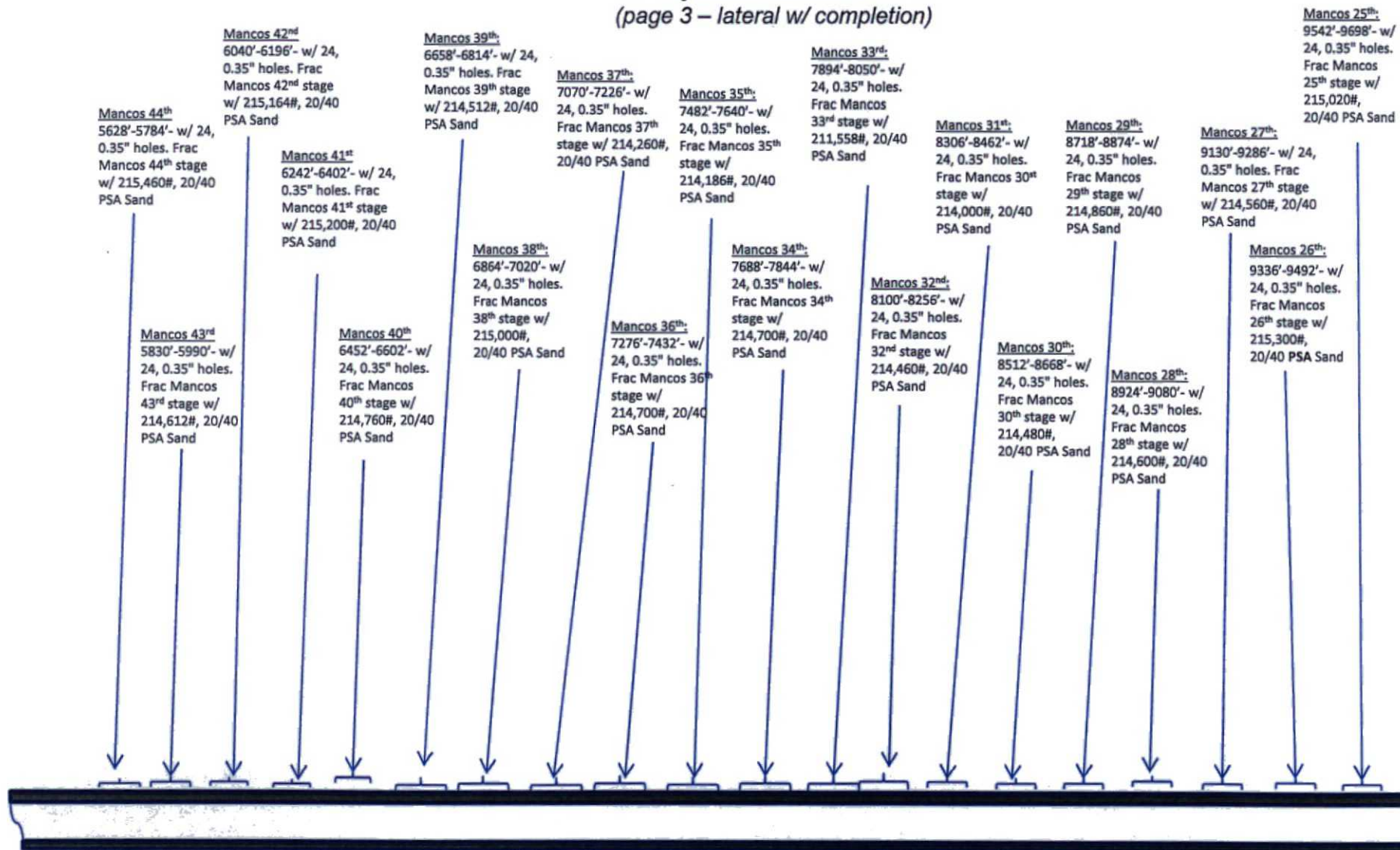
Mancos 14th
11808'-11964'-
w/ 24, 0.35"
holes. Frac
Mancos 14th
stage w/
217,476#, 20/40
PSA Sand

Mancos 12th
12220'-12376'-
w/ 24, 0.35"
holes. Frac
Mancos 12th
stage w/
214,713#,
20/40 PSA Sand

Mancos 10th
12632'-12788'-
w/ 24, 0.35"
holes. Frac
Mancos 10th
stage w/
214,975#, 20/40
PSA Sand

See page 1 for upper portion of hole

W Lybrook UT 747H
Lybrook Mancos W
(page 3 – lateral w/ completion)



See page 1 for upper portion of hole