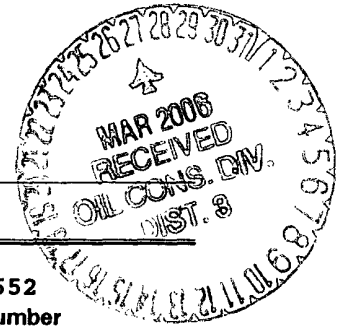


UNITED STATES  
DEPARTMENT OF THE INTERIOR  
BUREAU OF LAND MANAGEMENT



APPLICATION FOR PERMIT TO DRILL, DEEPEN, OR PLUG BACK

|  |   |                        |
|--|---|------------------------|
| 1a. Type of Work<br><b>DRILL</b>   | 5. Lease Number<br><b>NMSF-077652</b><br>Unit Reporting Number<br><b>070 FARMINGTON</b>   |                        |
| 1b. Type of Well<br><b>GAS</b>   | 6. If Indian, All. or Tribe   |                        |
| 2. Operator<br><b>BURLINGTON</b><br><b>RESOURCES</b> Oil & Gas Company   | 7. Unit Agreement Name  |                        |
| 3. Address & Phone No. of Operator<br><b>PO Box 4289, Farmington, NM 87499</b><br><br><b>(505) 326-9700</b>  | 8. Farm or Lease Name<br><b>East</b><br>9. Well Number<br><b>#13R</b>   |                        |
| 4. Location of Well <i>900</i><br><b>Unit M (SWSW), 990' FSL, 750' FWL</b><br><br><b>Latitude 36° 52.7701'N</b><br><b>Longitude 108° 03.3345'W</b> | 10. Field, Pool, Wildcat<br><b>Aztec Pictured Cliffs</b><br><br>11. Sec., Twn, Rge, Mer. (NMPM)<br><b>Sec. 24, T31N, R12W</b><br><b>API # 30-045- 33620</b> |                        |
| 14. Distance in Miles from Nearest Town<br><b>5.1 miles to Aztec, NM</b>   | 12. County<br><b>San Juan</b>   | 13. State<br><b>NM</b> |
| 15. Distance from Proposed Location to Nearest Property or Lease Line<br><b>750'</b>   | 17. Acres Assigned to Well<br><b>160 SW4</b>  |                        |
| 16. Acres in Lease   | 17. Acres Assigned to Well<br><b>160 SW4</b>  |                        |
| 18. Distance from Proposed Location to Nearest Well, Drig, Compl, or Applied for on this Lease<br><b>869' - East #5</b>                            | 20. Rotary or Cable Tools<br><b>Rotary</b>  |                        |
| 19. Proposed Depth<br><b>2780'</b>   | 22. Approx. Date Work will Start  |                        |
| 21. Elevations (DF, FT, GR, Etc.)<br><b>6108' GL</b>   | 22. Approx. Date Work will Start  |                        |
| 23. Proposed Casing and Cementing Program<br><b>See Operations Plan attached</b>   |   |                        |
| 24. Authorized by: <i>Amanda Sandoval</i><br><b>Regulatory Compliance Assistant II</b>   | <i>2-28-06</i><br>Date  |                        |

PERMIT NO.

APPROVAL DATE

APPROVED BY *D. Montecino*

TITLE *AFM*

DATE *3/22/06*

Archaeological Report attached

Threatened and Endangered Species Report attached

NOTE: This format is issued in lieu of U.S. BLM Form 3160-3

Title 18 U.S.C. Section 1001, makes it a crime for any person knowingly and willfully to make to any department or agency of the United States any false, fictitious or fraudulent statements or presentations as to any matter within its jurisdiction.

DRILLING OPERATIONS AUTHORIZED ARE  
SUBJECT TO COMPLIANCE WITH ATTACHED  
LAND MANAGEMENT PLANS

This action is subject to technical and  
approval of review pursuant to 43 CFR 3165.3  
and 43 CFR 3165.4

DISTRICT I  
1625 N. French Dr., Hobbs, N.M. 88240

State of New Mexico  
Energy, Minerals & Natural Resources Department

Form C-102  
Revised August 15, 2000

DISTRICT II  
811 South First, Artesia, N.M. 88210

DISTRICT III  
1000 Rio Brazos Rd., Aztec, N.M. 87410

DISTRICT IV  
2040 South Pacheco, Santa Fe, NM 87505

OIL CONSERVATION DIVISION

2040 South Pacheco  
Santa Fe, NM 87505

Submit to Appropriate District Office  
State Lease - 4 Copies  
Fee Lease - 3 Copies

RECEIVED

☐ AMENDED REPORT

WELL LOCATION AND ACREAGE DEDICATION PLAT

|                              |   |                     |                                     |
|------------------------------|---|---------------------|-------------------------------------|
| *API Number<br>30-045- 33620 |   | *Pool Code<br>71280 | *Pool Name<br>Aztec Pictured Cliffs |
| *Property Code<br>18517      | *Property Name<br>EAST  |                     | *Well Number<br>13R                 |
| *OGRID No.<br>14538          | *Operator Name<br>BURLINGTON RESOURCES OIL AND GAS COMPANY LP |                     | *Elevation<br>6108'                 |

<sup>10</sup> Surface Location

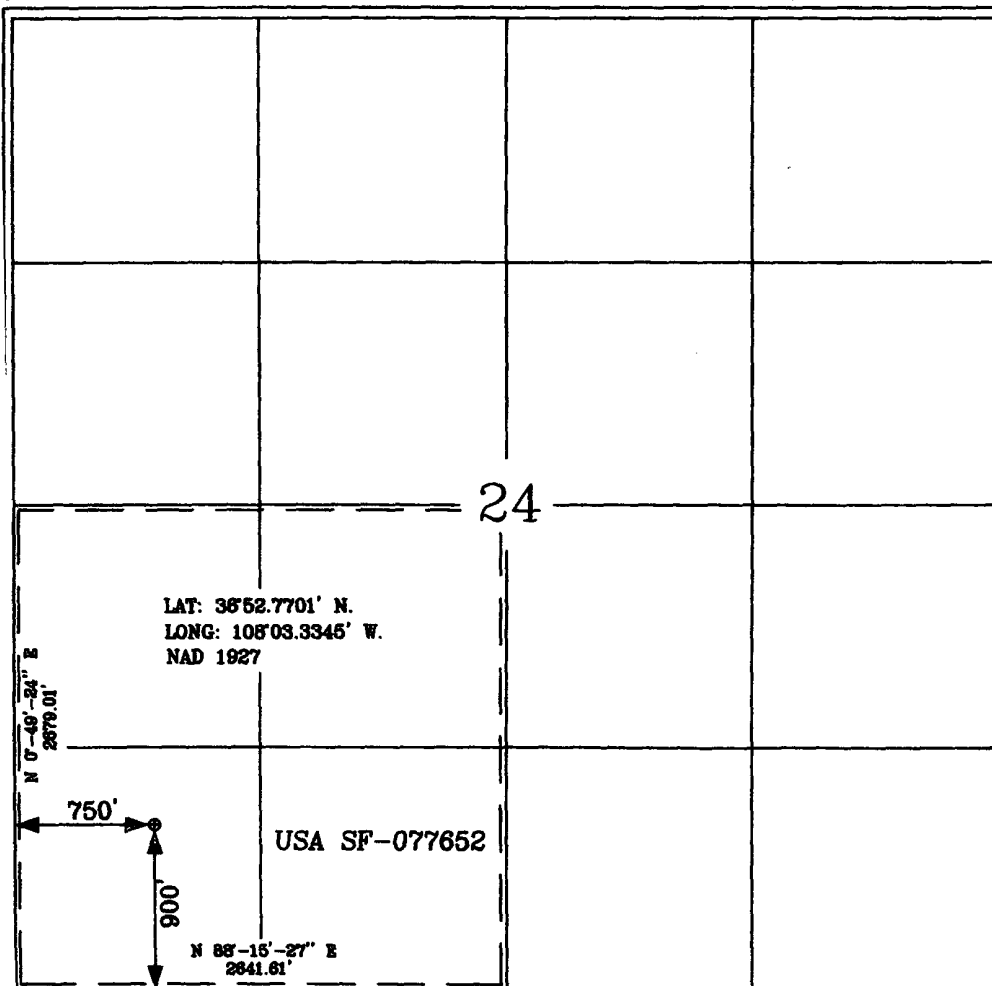
| UL or lot no. | Section | Township | Range | Lot Idn | Feet from the | North/South line | Feet from the | East/West line | County   |
|---------------|---------|----------|-------|---------|---------------|------------------|---------------|----------------|----------|
| M             | 24      | 31-N     | 12-W  |         | 900'          | SOUTH            | 750'          | WEST           | SAN JUAN |

<sup>11</sup> Bottom Hole Location If Different From Surface

| UL or lot no.               | Section | Township | Range | Lot Idn | Feet from the    | North/South line | Feet from the       | East/West line | County     |
|-----------------------------|---------|----------|-------|---------|------------------|------------------|---------------------|----------------|------------|
| *Dedicated Acres<br>160 SW4 |         |          |       |         | *Joint or Infill |                  | *Consolidation Code |                | *Order No. |

NO ALLOWABLE WILL BE ASSIGNED TO THIS COMPLETION UNTIL ALL INTERESTS HAVE BEEN CONSOLIDATED  
OR A NON-STANDARD UNIT HAS BEEN APPROVED BY THE DIVISION

16



17 OPERATOR CERTIFICATION

I hereby certify that the information contained herein is true and complete to the best of my knowledge and belief

*Amanda Sandoval*  
Signature

Amanda Sandoval  
Printed Name

Regulatory Assistant II  
Title

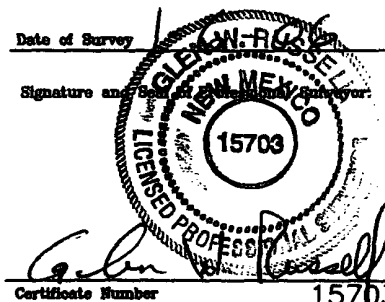
1-12-06  
Date

18 SURVEYOR CERTIFICATION

I hereby certify that the well location shown on this plat was plotted from field notes of actual surveys made by me or under my supervision, and that the same is true and correct to the best of my belief.

Date of Survey

Signature and Seal of Licensed Professional Surveyor



Certificate Number

15703

## District I

1625 N. French Dr., Hobbs, NM 88240

## District II

1301 W. Grand Ave., Artesia, NM 88210

## District III

1000 Rio Brazos Rd., Aztec, NM 87410

## District IV

1220 S. St. Francis Dr., Santa Fe, NM 87505

## Energy, Minerals and Natural Resources

## OIL CONSERVATION DIVISION

1220 South St. Francis Dr.

Santa Fe, NM 87505

May 27, 2004

WELL API NO.

30-045- 33620

5. Indicate Type of Lease

STATE ☐ FEE ☐

6. State Oil &amp; Gas Lease No.

NMSF-077652

7. Lease Name or Unit Agreement Name

East

8. Well Number

#13R

9. OGRID Number

14538

10. Pool name or Wildcat

Aztec Pictured Cliffs

## SUNDRY NOTICES AND REPORTS ON WELLS

(DO NOT USE THIS FORM FOR PROPOSALS TO DRILL OR TO DEEPEN OR PLUG BACK TO A DIFFERENT RESERVOIR. USE "APPLICATION FOR PERMIT" (FORM C-101) FOR SUCH PROPOSALS.)

1. Type of Well:

Oil Well ☐ Gas Well ☒ Other

2. Name of Operator

BURLINGTON RESOURCES OIL &amp; GAS COMPANY LP

3. Address of Operator

3401 E. 30TH STREET, FARMINGTON, NM 87402

4. Well Location

Unit Letter M : 900 feet from the South line and 750 feet from the West line  
Section 24 Township 31N Rng 12W NMPM County San Juan11. Elevation (Show whether DR, RKB, RT, GR, etc.)  
6108'

Pit or Below-grade Tank Application

☐ or Closure ☐Pit type new drill Depth to Groundwater >100' Distance from nearest fresh water well >1000' Distance from nearest surface water >1000'Pit Liner Thickness: n/a mil Below-Grade Tank: Volume          bbls; Construction Material         

## 12. Check Appropriate Box to Indicate Nature of Notice, Report or Other Data

## NOTICE OF INTENTION TO:

PERFORM REMEDIAL WORK ☐TEMPORARILY ABANDON ☐PULL OR ALTER CASING ☐PLUG AND ABANDON ☐CHANGE PLANS ☐MULTIPLE COMPL ☐

OTHER:

New Drill Pit ☒

## SUBSEQUENT REPORT OF:

REMEDIAL WORK ☐COMMENCE DRILLING OPNS. ☐CASING/CEMENT JOB ☐ALTERING CASING ☐P AND A ☐OTHER: ☐

13. Describe proposed or completed operations. (Clearly state all pertinent details, and give pertinent dates, including estimated date of starting any proposed work). SEE RULE 1103. For Multiple Completions: Attach wellbore diagram of proposed completion or recompletion.

New Drill, Unlined:

Burlington Resources proposes to construct a new drilling pit and an associated vent/flare pit. Based on Burlington's interpretation of the Ecosphere's risk ranking criteria, the new drilling pit and vent/flare pit will be an unlined pit as detailed in Burlington's Revised Drilling / Workover Pit Construction / Operation Procedures dated November 11, 2004 on file at the NMOCD office. A portion of the vent/flare pit will be designed to manage fluids, and that portion will be unlined, as per the risk ranking criteria. Burlington Resources anticipates closing these pits according to the Drilling / Workover Pit Closure Procedure dated August 2, 2004 on file at the NMOCD office.

I hereby certify that the information above is true and complete to the best of my knowledge and belief. I further certify that any pit or below-grade tank has been/will be constructed or closed according to NMOCD guidelines ☐, a general permit ☒ or an (attached) alternative OCD-approved plan ☐.SIGNATURE Amanda Sandoval TITLE Regulatory Assistant II DATE 1/18/2006Type or print name Amanda Sandoval E-mail address: asandoval@br-inc.com Telephone No. 505-326-9891  
For State Use OnlyAPPROVED BY [Signature] TITLE DEPUTY OIL & GAS INSPECTOR, DIST. 60 DATE MAR 27 2006

Conditions of Approval (if any):

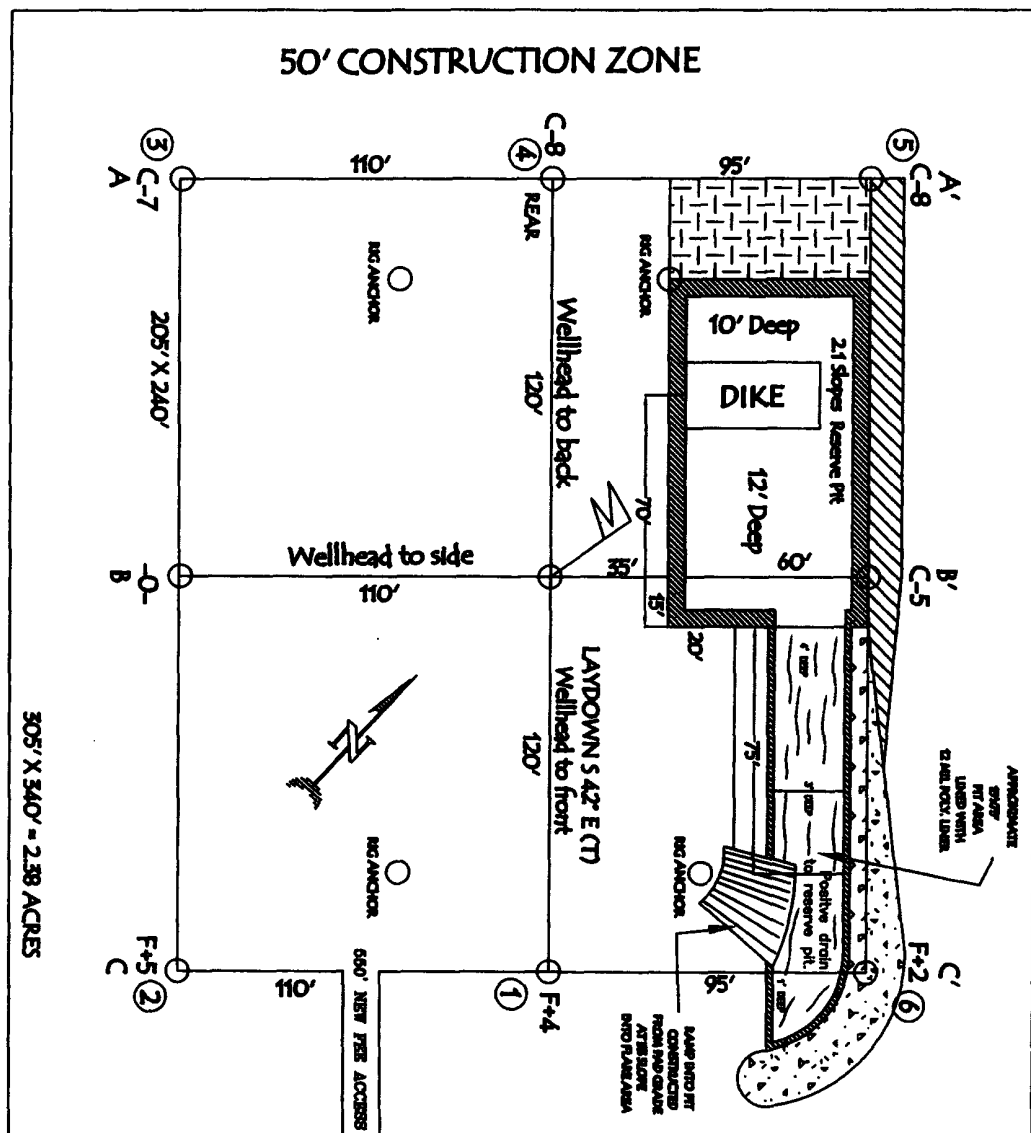
## EAST 13R, 900' FSL &amp; 750' FWL

GROUND ELEVATION: 6108', DATE: DECEMBER 16, 2005

**NOTE: VECTOR SURVEYS IS NOT LIABLE FOR UNDERGROUND UTILITIES OR PIPELINES.**

**CONTRACTOR SHOULD CALL ONE-CALL FOR LOCATION OF ANY MARKED OR UNMARKED BURIED**

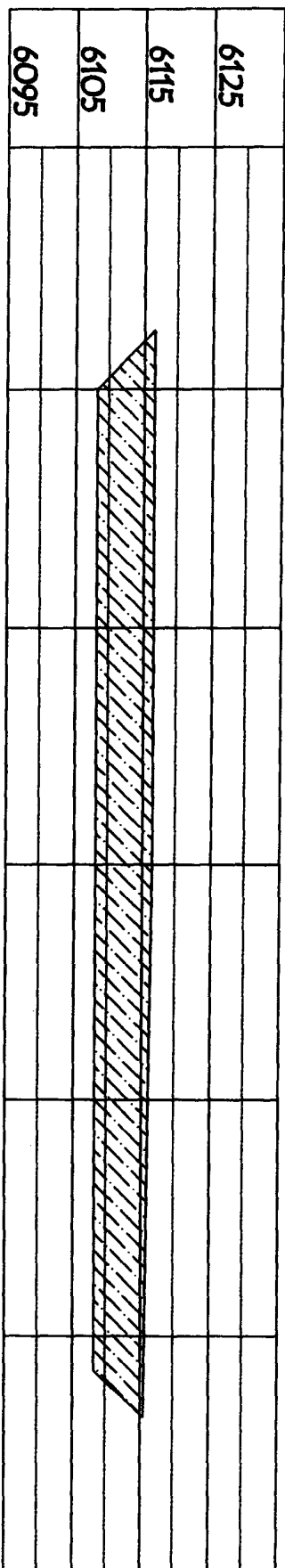
**PIPLINES OR CABLES ON WELL PAD AND OR ACCESS ROAD AT LEAST TWO (2) WORKING DAYS PRIOR TO CONSTRUCTION.**



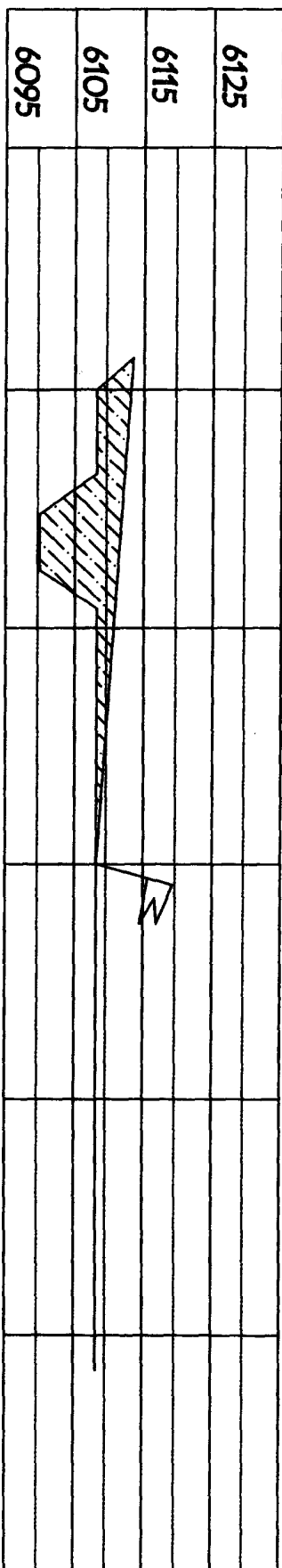
LATITUDE: 36° 52.7701' N LONGITUDE: 108° 03.3345' W NAD27

**BURLINGTON RESOURCES OIL & GAS COMPANY LP**  
 EAST 13R, 900' FSL & 750' FWL  
 SECTION 24, T-31-N, R-12-W, NMPM, SAN JUAN COUNTY, NM  
 GROUND ELEVATION: 6108', DATE: DECEMBER 16, 2005

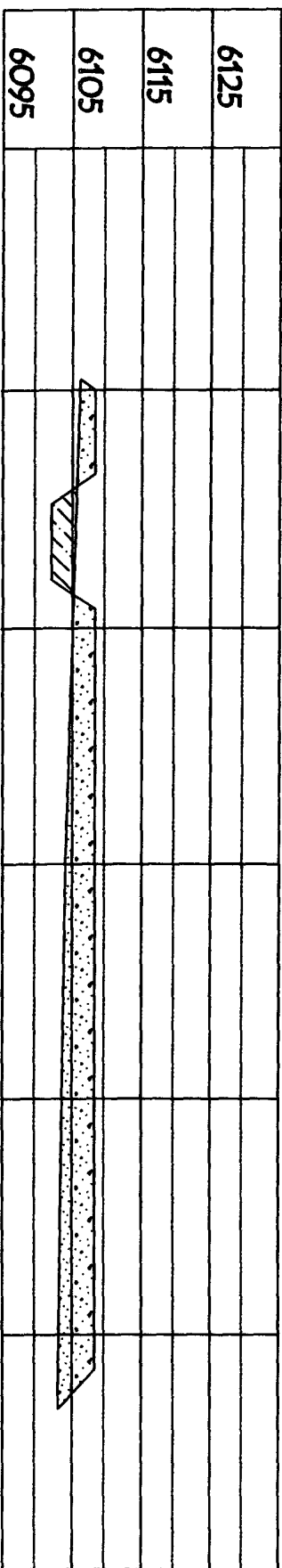
ELEV. A'-A



ELEV. B'-B



ELEV. C'-C



NOTE: VECTOR SURVEYS IS NOT LIABLE FOR UNDERGROUND UTILITIES OR PIPELINES.  
 CONTRACTOR SHOULD CALL ONE-CALL FOR LOCATION OF ANY MARKED OR UNMARKED BURIED  
 PIPELINES OR CABLES ON WELL PAD AND OR ACCESS ROAD AT LEAST TWO (2) WORKING DAYS PRIOR TO CONSTRUCTION.

OPERATIONS PLAN

**Well Name:** East #13R  
**Location:** Unit M (SWSW) 900' FSL & 750' FWL, Section 24, T31N, R12W  
 San Juan County, New Mexico  
 Latitude 36° 52.7701'N; Longitude 108° 03.3345W  
**Formation:** Aztec Pictured Cliffs  
**Elevation:** 6108' GR

| Formation:      | Top      | Bottom | Contents |
|-----------------|----------|--------|----------|
| Surface         | San Jose |        |          |
| Ojo Alamo       | 943'     |        |          |
| Kirtland        | 997'     | 2240'  | gas      |
| T/Fruitland     | 2240'    |        | gas      |
| B/Fruitland     | 2570'    |        | gas      |
| Pictured Cliffs | 2580'    |        |          |
| Total Depth     | 2780'    |        |          |

**Logging Program:** None

**Mud Program:**

| Interval  | Type              | Weight  | Vis. Fluid Loss  |
|-----------|-------------------|---------|------------------|
| 0- 120'   | Spud/Air/Air Mist | 8.4-8.9 | 40-50 no control |
| 120-2780' | Non-dispersed     | 8.4-9.5 | 30-60 no control |

**Casing Program:**

| Hole Size         | Depth Interval | Csg. Size | Wt.   | Grade  |
|-------------------|----------------|-----------|-------|--------|
| 8 $\frac{3}{4}$ " | 0 - 120'       | 7"        | 20.0# | J-55   |
| 6 $\frac{1}{4}$ " | 0 - 2780'      | 4 1/2"    | 10.5# | J/K-55 |

**Tubing Program:**

|           |        |      |      |
|-----------|--------|------|------|
| 0 - 2780' | 2 3/8" | 4.7# | J-55 |
|-----------|--------|------|------|

**Float Equipment:** 7" surface casing - guide shoe. Centralizers will be run in accordance with Onshore Order #2.

4 1/2" production casing - float shoe and float collar on bottom. Centralizers run every third joint above shoe to the base of the Ojo Alamo @ 997'. Two turbolizing type centralizers - one below and one into the base of the Ojo Alamo @ 997'. Standard centralizers thereafter every fourth joint up to the base of the surface pipe.

**Wellhead Equipment:** 7" x 4 1/2" x 2 3/8" x 11" 2000 psi xmas tree assembly.

January 18, 2006

**Cementing:**

7" surface casing Pre-Set Drilled - Cement with Type I, II cement with 20% flyash mixed at 14.5 ppg, 1.61 cu ft per sack yield. (Bring cement to surface). Wait on cement for 24 hours for pre-set holes before pressure testing or drilling out from under surface.

7" surface casing - Cement with 42 sx Type III cement with 0.25 pps Celloflake, 3% CaCl. (54cu ft of slurry @ 1.28 yield). 200% excess, bring cement to surface. Wait on cement for 8 hrs for conventionally set holes before pressure testing or drilling out from under surface. **WOC until cement establishes 250 psi compressive strength prior to NU of BOPE.**

4 1/2" production casing - Cement with 142sx (303cu ft of slurry @ 2.13 yield) Premium Lite with 3% calcium chloride, 5 pps LCM-1, and 1/4#/sack celloflake, 0.4% FL-52, & 0.4% SMS. Tail with 90sx (124cu ft of slurry @ 1.38 yield) Type III cmt with 1% calcium chloride, 1/4#/sack Celloflake and 0.2% FL-52. Total of 427 cf - 50% excess to circulate to surface.

**BOP and tests:**

Surface to TD - 11" 2000 psi (minimum double gate BOP stack (Reference Figure #1 and #2). Prior to drilling out surface casing, test ~~rams~~ <sup>BOP</sup> to 600 psi/30 min.

Completion - 6" 2000 psi (minimum) double gate BOP stack (Reference Figure #2). Prior to completion operations, test rams and casing to 1500 psi/30 min.

From surface to TD - choke manifold (Reference Figure #3).

Pipe rams will be actuated at least once each day and blind rams actuated once each trip to test proper functioning. An upper kelly cock valve with handle and drill string safety valves to fit each drill string will be maintained and available on the rig floor.

**Additional information:**

- \* The Pictured Cliffs formation will be completed.
- \* Anticipated pore pressure for the Fruitland is between 600 - 700 psi.
- \* This gas is dedicated.
- \* The southwest quarter of section 24 is dedicated to the Pictured Cliffs.
- \* New casing will be utilized.
- \* Pipe movement (either rotation or reciprocation) will be done if hole conditions permit.

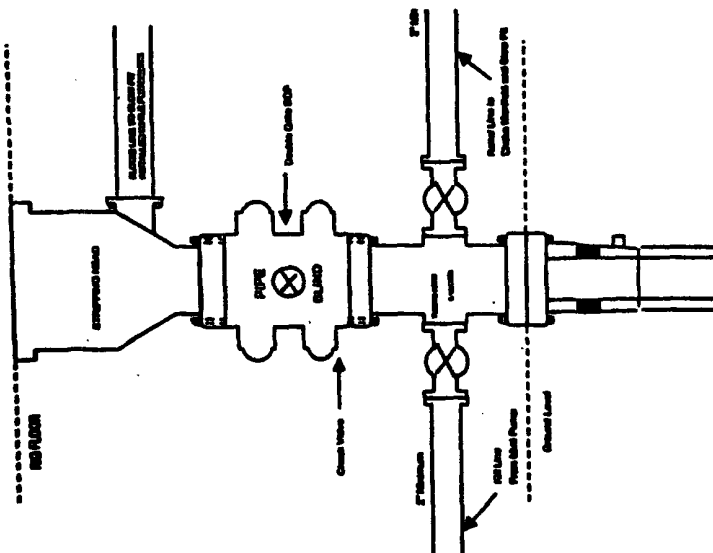
Drilling Engineer

Date

3/2/06

# BURLINGTON RESOURCES

Completion/Workover Rig  
BOP Configuration  
2,000 psi System

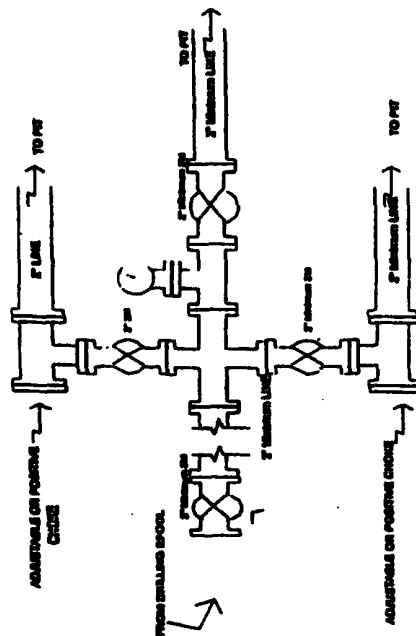


Minimum BOP installation for all Completion/Workover Operations. 7-1/16" bore, 2000 psi minimum working pressure double gate BOP to be equipped with blind and pipe rams. A stopping head to be installed on the top of the BOP. All BOP equipment is 2000 psi working pressure or greater excluding 500 psi stopping head.

Figure #2

# BURLINGTON RESOURCES

Drilling Rig  
Choke Manifold Configuration  
2000 psi System

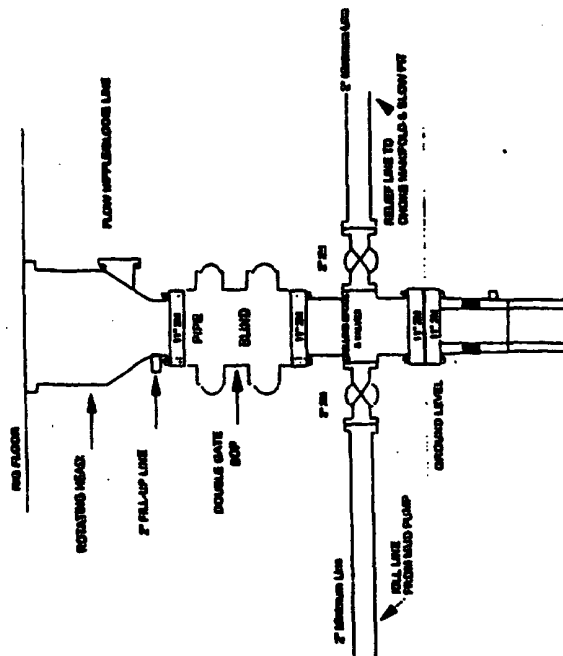


Choke manifold installation from Surface Casing Point to Total Depth. 2,000psi working pressure equipment with two chokes.

Figure #3

# Burlington Resources

Drilling Rig  
2000 psi System



BOP installation from Surface Casing Point to Total Depth. 11" Bore 10" Minimum, 2000 psi working pressure double gate BOP to be equipped with blind rams and pipe rams. A 500 psi retaining head on top of ram preventer. All BOP equipment is 2,000 psi working pressure.

Figure #1