

UNITED STATES
DEPARTMENT OF THE INTERIOR
BUREAU OF LAND MANAGEMENT

APPLICATION FOR PERMIT TO DRILL, DEEPEN, OR PLUG BACK

2006 FEB 28 AM 8 00

1a. Type of Work DRILL	5. Lease Number NMNM-6893 Unit Reporting Number 070 FARMINGTON NM	
1b. Type of Well GAS	6. If Indian, All. or Tribe	
2. Operator BURLINGTON RESOURCES Oil & Gas Company	7. Unit Agreement Name	
3. Address & Phone No. of Operator PO Box 4289, Farmington, NM 87499 (505) 326-9700	8. Farm or Lease Name Wilmer Canyon 9. Well Number #102S	
4. Location of Well Unit N (SESW), 660' FSL, 1455' FWL Latitude 36° 57.7913'N Longitude 107° 37.8315'W	10. Field, Pool, Wildcat Basin Fruitland Coal 11. Sec., Twn, Rge, Mer. (NMPM) N Sec. 24, T32N, R8W API # 30-045- 33616	
14. Distance in Miles from Nearest Town 21 miles to Navajo Dam P.O.	12. County San Juan	13. State NM
15. Distance from Proposed Location to Nearest Property or Lease Line 660'	17. Acres Assigned to Well 320 W2	
16. Acres in Lease		
18. Distance from Proposed Location to Nearest Well, Drlg, Compl, or Applied for on this Lease 800' - Wilmer Canyon #1		
19. Proposed Depth 3584'	20. Rotary or Cable Tools Rotary	
21. Elevations (DF, FT, GR, Etc.) 6647' GL	22. Approx. Date Work will Start	
23. Proposed Casing and Cementing Program See Operations Plan attached		
24. Authorized by: <u>Armando Sandoval</u> Regulatory Compliance Assistant II	2-27-06 Date	

PERMIT NO.

APPROVAL DATE

APPROVED BY

TITLE

DATE

Archaeological Report attached

Threatened and Endangered Species Report attached

NOTE: This format is issued in lieu of U.S. BLM Form 3160-3

Title 18 U.S.C. Section 1001, makes it a crime for any person knowingly and willfully to make to any department or agency of the United States any false, fictitious or fraudulent statements or presentations as to any matter within its jurisdiction.

This action is subject to technical and procedural review pursuant to 43 CFR 3165.3 and appeal pursuant to 43 CFR 3165.4

NMOC

ALL OPERATIONS AUTHORIZED ARE IN ACCORDANCE WITH ATTACHED "GENERAL REQUIREMENTS".

District I
PO Box 1980, Hobbs, NM 88241-1980

District II
PO Drawer DD, Artesia, NM 88211-0719

District III
1000 Rio Brazos Rd., Aztec, NM 87410

District IV
PO Box 2088, Santa Fe, NM 87504-2088

State of New Mexico
Energy, Minerals & Natural Resources Department

Form C-102
Revised February 21, 1994

Instructions on back
Submit to Appropriate District Office
State Lease - 4 Copies
Fee Lease - 3 Copies

OIL CONSERVATION DIVISION
PO Box 2088
Santa Fe, NM 87504-2088

2005 FEB 28 AM 8:00 AMENDED REPORT

RECEIVED

WELL LOCATION AND ACREAGE DEDICATION PLAT

*API Number 30-045- 33616		*Pool Code 71629	*Pool Name Basin Fruitland Coal
*Property Code 18641	*Property Name WILMER CANYON		*Well Number 102S
*OGRID No. 14538	*Operator Name BURLINGTON RESOURCES OIL & GAS COMPANY, LP		*Elevation 6647'

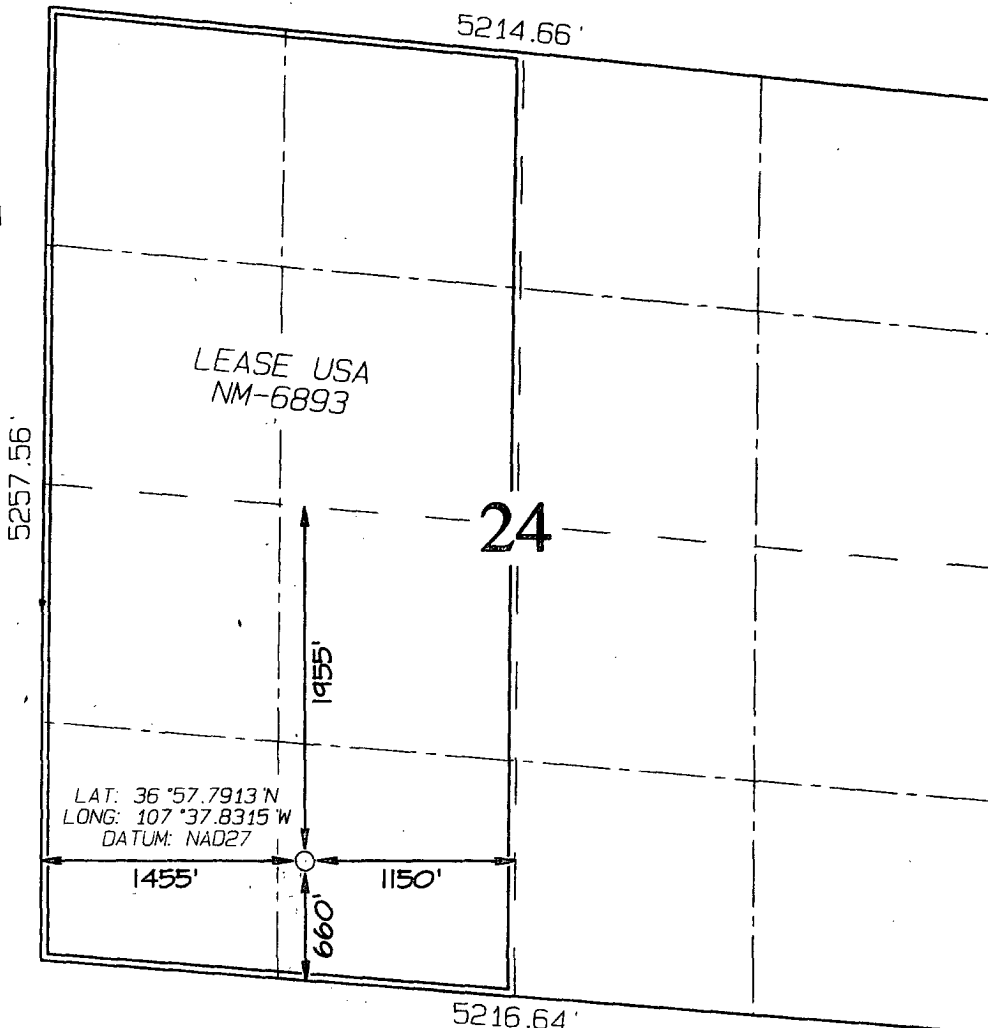
10 Surface Location

UL or lot no.	Section	Township	Range	Lot Idn	Feet from the	North/South line	Feet from the	East/West line	County
N	24	32N	8W		660	SOUTH	1455	WEST	SAN JUAN

11 Bottom Hole Location If Different From Surface

UL or lot no.	Section	Township	Range	Lot Idn	Feet from the	North/South line	Feet from the	East/West line	County
N									
12 Dedicated Acres 320 W/2 - FC					13 Joint or Infill	14 Consolidation Code	15 Order No.		

NO ALLOWABLE WILL BE ASSIGNED TO THIS COMPLETION UNTIL ALL INTERESTS HAVE BEEN CONSOLIDATED
OR A NON-STANDARD UNIT HAS BEEN APPROVED BY THE DIVISION



17 OPERATOR CERTIFICATION

I hereby certify that the information
contained herein is true and complete
to the best of my knowledge and belief

Patsy Clugston
Signature

Patsy Clugston

Printed Name

Sr. Regulatory Specialist

Title

1-6-06

Date

18 SURVEYOR CERTIFICATION

I hereby certify that the well location
shown on this plat was plotted from field
notes of actual surveys made by me or under
my supervision, and that the same is true
and correct to the best of my belief.

Survey Date: **DECEMBER 8, 2005**

Signature and Seal of Professional Surveyor



JASON C. EDWARDS

Certificate Number 15269

District I

1625 N. French Dr., Hobbs, NM 88240

District II

1301 W. Grand Ave., Artesia, NM 88210

District III

1000 Rio Brazos Rd., Aztec, NM 87410

District IV

1220 S. St. Francis Dr., Santa Fe, NM 87505

State of New Mexico

Energy, Minerals and Natural Resources

Form C-103

May 27, 2004

OIL CONSERVATION DIVISION

1220 South St. Francis Dr.

Santa Fe, NM 87505

WELL API NO.

30-045-336110

5. Indicate Type of Lease

STATE ☐

FEE ☐

6. State Oil & Gas Lease No.

NMNM-6893

7. Lease Name or Unit Agreement Name

Wilmer Canyon

8. Well Number

#102S

9. OGRID Number

14538

10. Pool name or Wildcat

Basin Fruitland Coal

SUNDRY NOTICES AND REPORTS ON WELLS
(DO NOT USE THIS FORM FOR PROPOSALS TO DRILL OR TO DEEPEN OR PLUG BACK TO A DIFFERENT RESERVOIR. USE "APPLICATION FOR PERMIT" (FORM C-101) FOR SUCH PROPOSALS.)

1. Type of Well:

Oil Well ☐

Gas Well ☒

Other

2. Name of Operator

BURLINGTON RESOURCES OIL & GAS COMPANY LP

3. Address of Operator

3401 E. 30TH STREET, FARMINGTON, NM 87402

4. Well Location

Unit Letter N : 660 feet from the South line and 1455 feet from the West line

Section 24 Township 32N Rng 8W NMPM County San Juan

11. Elevation (Show whether DR, RKB, RT, GR, etc.)

6647'

Pit or Below-grade Tank Application

☐ or Closure ☐

Pit type New Drill

Depth to Groundwater

>100'

Distance from nearest fresh water well

>1000'

Distance from nearest surface water

4200'

Pit Liner Thickness:

12

mil

Below-Grade Tank:

Volume

bbls;

Construction Material

12. Check Appropriate Box to Indicate Nature of Notice, Report or Other Data

NOTICE OF INTENTION TO:

PERFORM REMEDIAL WORK ☐

TEMPORARILY ABANDON ☐

PULL OR ALTER CASING ☐

PLUG AND ABANDON ☐

CHANGE PLANS ☐

MULTIPLE COMPL ☐

OTHER:

New Drill

☒

SUBSEQUENT REPORT OF:

REMEDIAL WORK ☐

COMMENCE DRILLING OPNS. ☐

CASING/CEMENT JOB ☐

ALTERING CASING ☐

P AND A ☐

OTHER: ☐

13. Describe proposed or completed operations. (Clearly state all pertinent details, and give pertinent dates, including estimated date of starting any proposed work). SEE RULE 1103. For Multiple Completions: Attach wellbore diagram of proposed completion or recompletion.

New Drill, Lined:

Burlington Resources proposes to construct a new drilling pit and an associated vent/flare pit. Based on Burlington's interpretation of the Ecosphere's risk ranking criteria, the new drilling pit will be a lined pit as detailed in Burlington's Revised Drilling / Workover Pit Construction / Operation Procedures dated November 11, 2004 on file at the NMOCD office. A portion of the vent/flare pit will be designed to manage fluids and that portion will be lined as per the risk ranking criteria. Burlington Resources anticipates closing these pits according to the Drilling / Workover Pit Closure Procedure dated August 2, 2004 on file at the NMOCD office.

I hereby certify that the information above is true and complete to the best of my knowledge and belief. I further certify that any pit or below-grade tank has been/will be constructed or closed according to NMOCD guidelines ☐, a general permit ☒ or an (attached) alternative OCD-approved plan ☐.

SIGNATURE

Amanda Sandoval

TITLE

Regulatory Assistant II

DATE

1/17/2006

Type or print name

Amanda Sandoval

E-mail address:

asandoval@br-inc.com

Telephone No.

505-326-9891

For State Use Only

APPROVED BY

[Signature]

TITLE

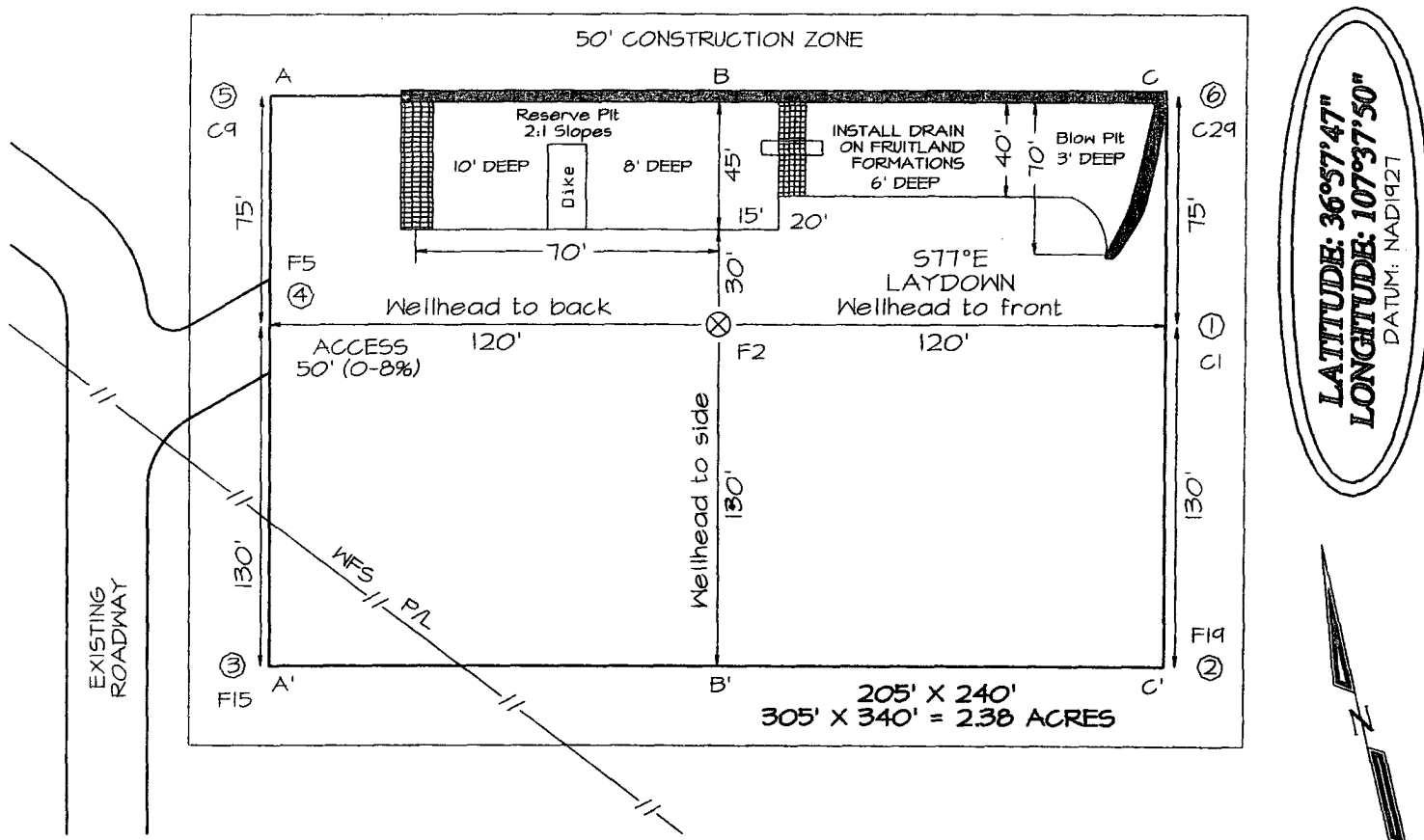
DEPUTY OIL & GAS INSPECTOR, DIST. IV

DATE

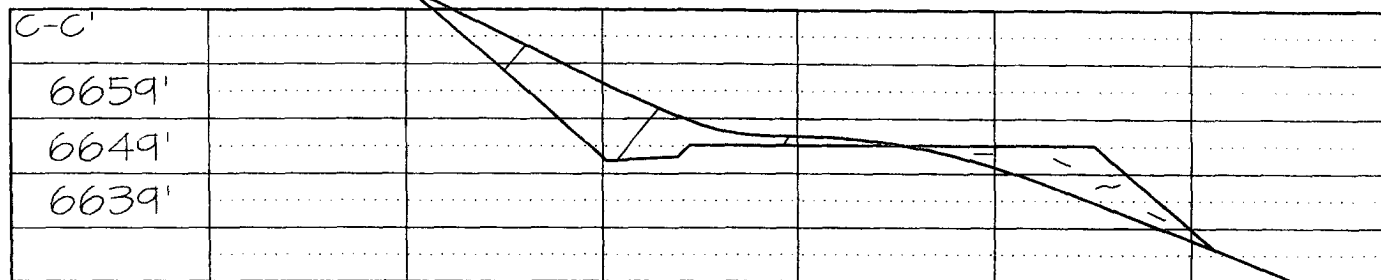
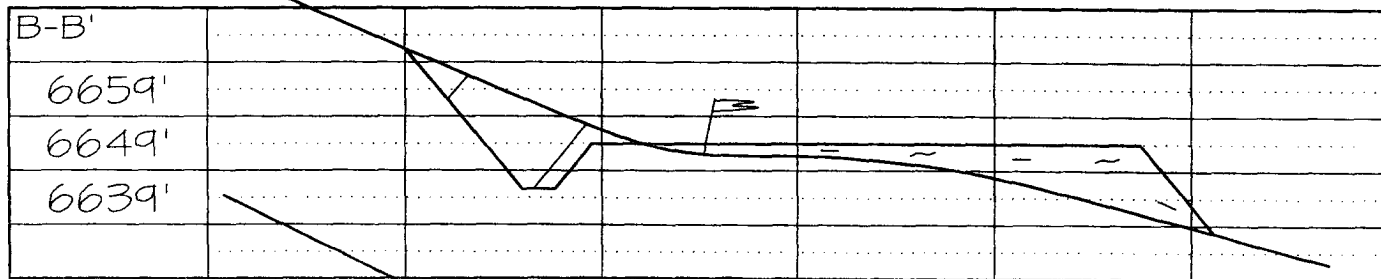
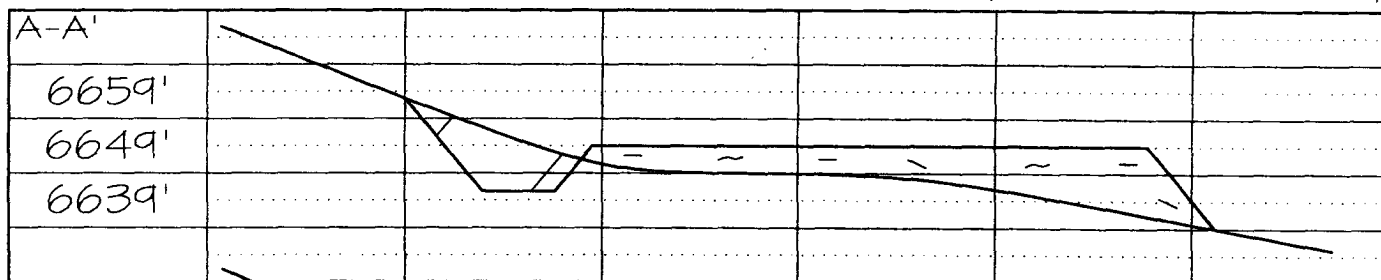
APR 03 2006

Conditions of Approval (if any):

BURLINGTON RESOURCES OIL & GAS COMPANY WILMER CANYON #102S
660' FSL & 1455' FWL, SECTION 24, T32N, R8W, NMPM, SAN JUAN COUNTY, NM
GROUND ELEVATION: 6647' DATE: DECEMBER 8, 2005



Reserve Pit DiKE: to be 8' above Deep side (overflow - 3' wide and 1' above shallow side).
 Blow Pit: overflow pipe halfway between top and bottom and to extend over plastic liner and into blow pit.



Note: Contractor should call One-Call for location of any marked or unmarked buried pipelines or cables on well pad and/or access road at least two (2) working days prior to construction

OPERATIONS PLANS FOR FRUITLAND COAL WELLS

Well Name: Wilmer Canyon #102S
Location: Unit N (SESW), 660' FSL, 1455' FWL
Sec. 24 T-32-N, R-8-W
San Juan County, NM
Latitude 36° 57.7913'N
Longitude 107° 37.8315'W

2006 MAR 24 AM 8 49

RECEIVED
070 FARMINGTON NM

Formation: Basin Fruitland Coal

<u>Formation Tops:</u>	<u>Top</u>	<u>Bottom</u>	<u>Contents</u>
Surface	San Jose	2274'	
Ojo Alamo	2274'	2336'	aquifer
Kirtland	2336'	3211'	gas
Top/Fruitland Coal	3211'		gas
Base/Fruitland Coal	3499'		
Intermediate TD	3181"		
Pictured Cliffs	3506'		gas
TD	3584'		

This will be a single producing FC well, and is not an HPA well. Burlington requests permission to use the 85' into the Pictured Cliffs interval as a sump. There will be a mudlogger on site during drilling to verify PC gas isn't reached.

Logging Program:

Mudlog from intermediate to TD
Cores - none

Mud Program:

<u>Interval</u>	<u>Type</u>	<u>Weight</u>	<u>Vis.</u>	<u>Fluid Loss</u>
0- 200'	Spud Mud/Air/Air Mist	8.4-9.0	40-50	no control
200'- 3181'	LSND/Clear Water/ Starch-Polymer	8.4-9.0	30-60	no control
3181' - 3584'	Air/Mist			

Circulating media will be contractor dependent.

Pit levels will be visually monitored to detect gain or loss of fluid control.

Casing Program (as listed, the equivalent, or better):

<u>Hole Size</u>	<u>Depth Interval</u>	<u>Csg. Size</u>	<u>Wt.</u>	<u>Grade</u>
12 1/4"	0' - 200'	9 5/8"	32.3#	H-40
8 3/4"	120' - 3181'	7"	20.0#	J-55
6 1/4"	3181'- 3584'	5 1/2"	15.5#	J-55
			or open hole	

Tubing Program:

0' - 3584' 2 3/8" 4.7# J-55

BOP and tests:

Surface to intermediate TD - 11" 2000 psi (minimum) double gate BOP stack (Reference Figure #1). Prior to drilling out surface casing, test BOPE to 600 psi for 30 min.

Intermediate TD to Total Depth - 7 1/6" 2000 psi (minimum) completion BOP stack (Reference Figure #2). Prior to drilling out intermediate casing, test BOPE and casing to 1500 psi for 30 minutes.

From surface to 7" TD - a choke manifold will be installed in accordance with Onshore Order No. 2 (Reference Figure #3). When the cavitation completion rig drills the production hole, the completion rig configuration will be used (Reference Figure #4). ~~Subsequent operations will be conducted in accordance with Onshore Order No. 2.~~

Wellhead Equipment: 9 5/8" x 7" x 2 3/8" x 11" 2000 psi xmas tree assembly.

General -

- Pipe rams will be actuated once each day and blind rams will be actuated once each trip to test proper functioning.
- An upper kelly cock valve with handle available and drill string valves to fit each drill string will be available on the rig floors at all times.
- BOP pit level drill will be conducted weekly for each drilling crew.
- All BOP tests and drills will be recorded in daily drilling reports.
- Blind and pipe rams will be equipped with extension hand wheels.

Cementing:

9 5/8" surface casing Pre-Set w/147sx (188cf) @ 2.28 yield. ²⁰⁴ 1.161 ^{14.5} 1.161
Cement with Type I, II cement with 20% flyash mixed at 15.2 ppg, 1.28 cu ft per sack yield. (Bring cement to surface). Wait on cement for 24 hours for pre-set holes before pressure testing or drilling out from under surface.

9 5/8" surface casing Conventionally w/147sx (188cf) @ 1.28 yield.
Cement with Type III cement with 0.25 pps Celloflake, 3% calcium chloride. (200% excess, bring cement to surface). Wait on cement appropriate time until cement achieves 250 psi compressive strength at 60 degrees F. prior to nipple up of BOPE. Wait on cement for 8 hrs for conventionally set holes before pressure testing or drilling out from under surface. Test casing to 600 psi for 30 minutes.

Saw tooth guide shoe on bottom. Bowspring centralizers will be run in accordance with Onshore Order #2.

7" intermediate casing w/332sx (707cf - 10bbls slurry) @ 2.13 yield. Lead with Premium Lite HS FM w/3% CaCl₂, 0.25#/sx Floccelle, 5#/sx LCM-1, 0.4% FL-52 & 0.4% SMS (50% excess to circulate to surface). WOC minimum of 8 hours before drilling out intermediate casing. If cement does not circulate to surface, a CBL or a temperature survey will be run to determine TOC. Test casing to 1500 psi for 30 minutes.

Cement nose guide shoe on bottom with float collar spaced on top of shoe joint. Bowspring centralizers spaced every other joint off bottom, to the base of the Ojo Alamo 2336'. Two turbolating centralizers at the base of the Ojo Alamo 2336'. Bowspring centralizers spaced every fourth joint from the base of the Ojo Alamo to the base of the surface casing.

Cementing cont.

5 1/2" liner - will not be cemented if run.

Note: If open hole logs are run, cement volumes will be based on 25% excess over caliper volumes.

- If hole conditions permit, an adequate water spacer will be pumped ahead of each cement job to prevent cement/mud contamination or cement hydration.

Additional information:

- * The Fruitland Coal formation will be completed.
- * No abnormal temperatures or hazards are anticipated.
- * Anticipated pore pressure for the Fruitland is less than 500 psi.
- * This gas is dedicated.


- Drilling Engineer

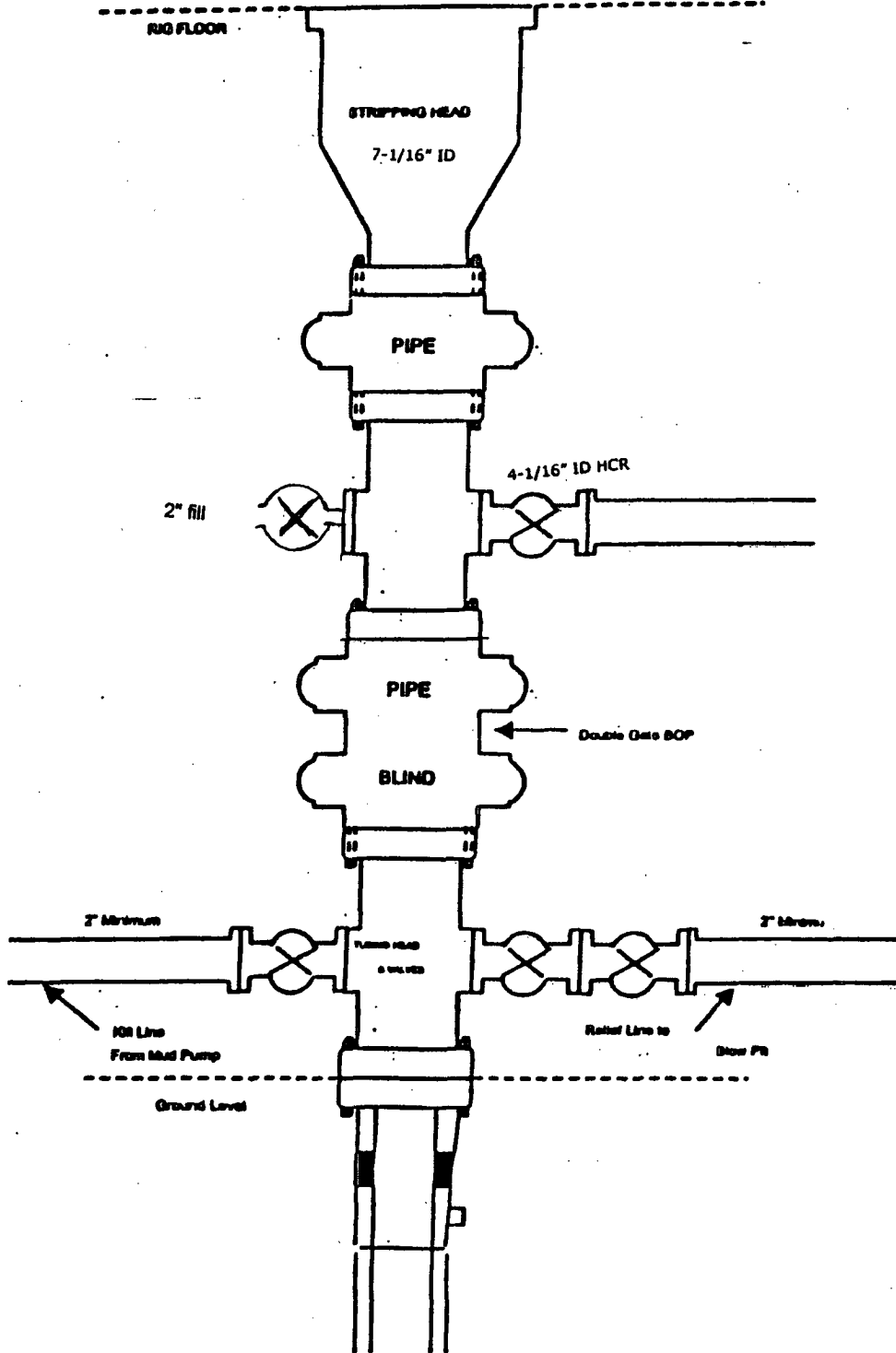

1/17/06
Date

BURLINGTON RESOURCES

Figure #4
Cavitation Rig
BOP Configuration
2,000 psi Minimum System

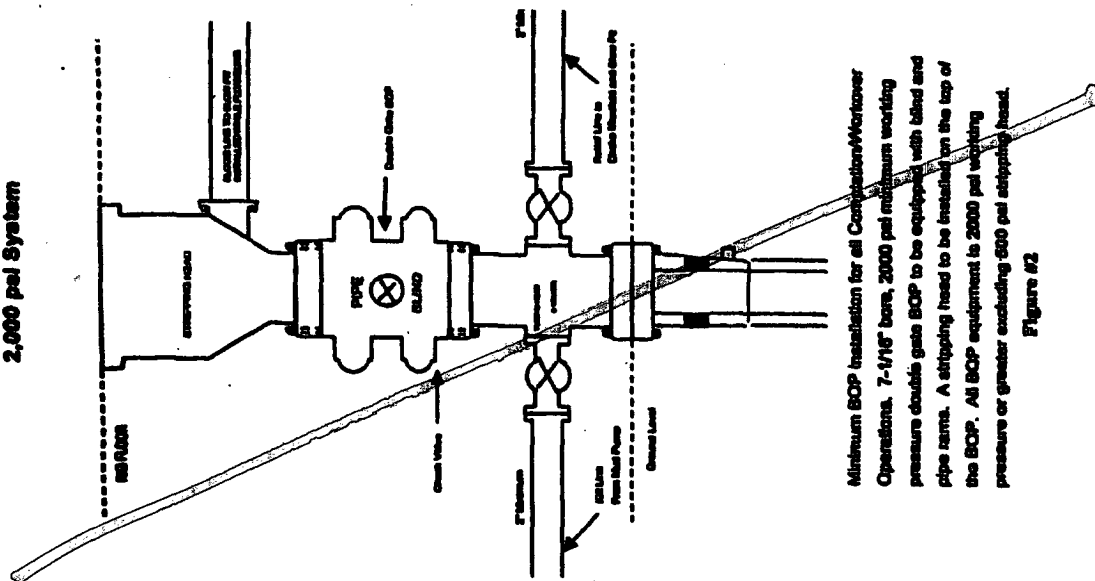
2006 MAR 22 PM 2 51

RECEIVED
070 FARMINGTON NM



BURLINGTON RESOURCES

**Completion/Workover Rig
BOP Configuration
2,000 psi System**

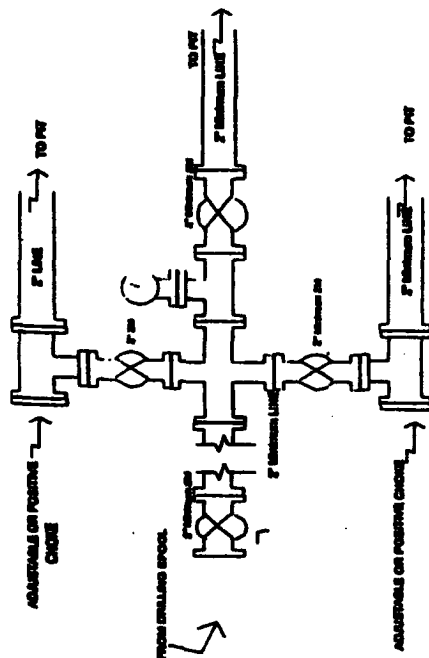


Minimum SOP installation for all Contractors/Monitors
Operations. 7-1/16" bore, 2000 psi minimum working
pressure should be equipped with blind and
pressure should be installed on the top of
pipe runs. A shipping head to be installed on the top of
the BOP. All BOP equipment is 2000 psi working
pressure or greater excluding 500 psi and shipping head.

Figure 62

BURLINGTON RESOURCES

**Drilling Rig
Choke Manifold Configuration
2000 psi System**

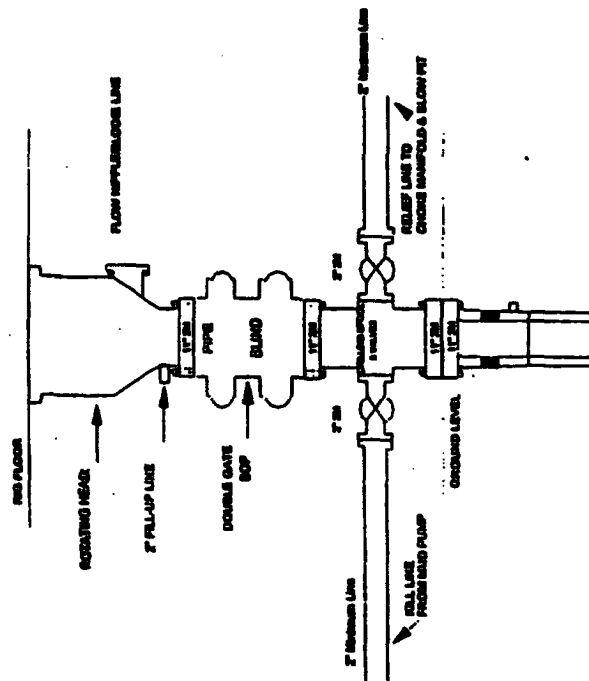


**Choke manifold installation from Surface Casing
Point to Total Depth. 2,000psi working pressure
equipment with two chokes.**

Figure 13

Burlington Resources

Drilling Rig 2000 psi System



BOP Isolation from Surface Casing Piled to Total Depth, 11" Bore 10" Nominal, 2000 psi working pressure enables gas BOP to be equipped with blind rams and pipe rams. A BOP psi rating based on top of ram preventers. At BOP equipment is 2,000 psi and working pressure

பிழைப்பு

4-20-01

4-20-01

submitted in lieu of Form 3160-5
UNITED STATES
DEPARTMENT OF THE INTERIOR
BUREAU OF LAND MANAGEMENT

Sundry Notices and Reports on Wells

2006 MAR 13 PM 4 25

1. Type of Well
GAS

2. Name of Operator
BURLINGTON
RESOURCES OIL & GAS COMPANY LP

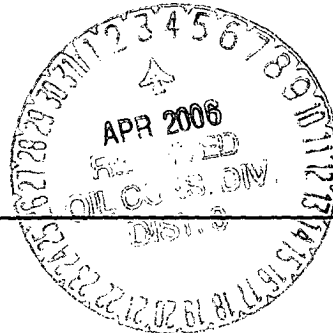
3. Address & Phone No. of Operator

PO Box 4289, Farmington, NM 87499 (505) 326-9700

4. Location of Well, Footage, Sec., T, R, M
Sec., T--N, R--W, NMPM

Unit N (SESW) 660' FSL & 1455' FWL, Sec. 24, T32N, R8W NMPM

RECEIVED
OTO FARMINGTON NM



5. Lease Number
NMNM-6893
6. If Indian, All. or
Tribe Name
7. Unit Agreement Name
8. Well Name & Number
Wilmer Canyon #102S
9. API Well No.
30-045- 33614
10. Field and Pool
Basin Fruitland Coal
11. County and State
San Juan Co., NM

12. CHECK APPROPRIATE BOX TO INDICATE NATURE OF NOTICE, REPORT, OTHER DATA

Type of Submission	Type of Action
<input checked="" type="checkbox"/> Notice of Intent	<input type="checkbox"/> Abandonment <input type="checkbox"/> Change of Plans <input checked="" type="checkbox"/> Other - Sump
<input type="checkbox"/> Subsequent Report	<input type="checkbox"/> Recompletion <input type="checkbox"/> New Construction
<input type="checkbox"/> Final Abandonment	<input type="checkbox"/> Plugging <input type="checkbox"/> Non-Routine Fracturing
	<input type="checkbox"/> Casing Repair <input type="checkbox"/> Water Shut off
	<input type="checkbox"/> Altering Casing <input type="checkbox"/> Conversion to Injection

13. Describe Proposed or Completed Operations

After receiving denial of sump for the referenced well, Burlington has reviewed the ownership status of the well (attached) and found that Burlington Resources owns 100% to all depths. We respectfully request your reconsideration allowing a sump to be drilled on this well, since there will not be a concern about producing any unowned gas. We will still employ mudloggers on this well to monitor the gas while drilling the PC section of the well and collect gas samples during the respective completions if warranted. We would anticipate about a two week cavitation period. If the PC is found to be contributing at that point, then we will review our options. *CS*

14. I hereby certify that the foregoing is true and correct.

Signed Amanda Sandoval Amanda Sandoval Title Regulatory Assistant III Date 3/9/06

(This space for Federal or State Office use)

APPROVED BY [Signature] Title AFM
CONDITION OF APPROVAL, if any:

Title 18 U.S.C. Section 1001, makes it a crime for any person knowingly and willfully to make any department or agency of the United States any false, fictitious or fraudulent statements or representations as to any matter within its jurisdiction.

NMOCD