

UNITED STATES
DEPARTMENT OF THE INTERIOR
BUREAU OF LAND MANAGEMENT

APPLICATION FOR PERMIT TO DRILL, DEEPEN, OR PLUG BACK

1a. Type of Work DRILL	5. Lease Number NMSF-078138 Unit Reporting Number NMMNM-099467	
1b. Type of Well GAS	6. If Indian, All. or Tribe	
2. Operator BURLINGTON RESOURCES Oil & Gas Company, LP	7. Unit Agreement Name	
3. Address & Phone No. of Operator PO Box 4289, Farmington, NM 87499 (505) 326-9700	8. Farm or Lease Name Morris A 9. Well Number #1S	
4. Location of Well Unit P (SESE), 660' FSL & 660' FEL, Latitude 36° 47.5347'N Longitude 108° 00.3940'W <i>Lot 9</i>	10. Field, Pool, Wildcat Basin Fruitland Coal 11. Sec., Twn, Rge, Mer. (NMPM) Sec. 20, T30N, R11W API # 30-045- 33638	
14. Distance in Miles from Nearest Town	12. County San Juan	13. State NM
15. Distance from Proposed Location to Nearest Property or Lease Line 660'	17. Acres Assigned to Well FC - 319.37 S/2	
16. Acres in Lease	20. Rotary or Cable Tools Rotary	
18. Distance from Proposed Location to Nearest Well, Drlg, Compl, or Applied for on this Lease 590' - COPC MarX Federal #1	22. Approx. Date Work will Start	
19. Proposed Depth 2350'	23. Proposed Casing and Cementing Program See Operations Plan attached	
24. Authorized by: <i>Patsy Olvera</i> Sr. Regulatory Specialist	Date <i>3/7/06</i>	

PERMIT NO. _____ APPROVAL DATE _____
APPROVED BY *D. Martinez* TITLE *AFM* DATE *3/34/06*

Archaeological Report attached

Threatened and Endangered Species Report attached

NOTE: This format is issued in lieu of U.S. BLM Form 3160-3

Title 18 U.S.C. Section 1001, makes it a crime for any person knowingly and willfully to make to any department or agency of the United States any false, fictitious or fraudulent statements or presentations as to any matter within its jurisdiction.

Not an HPA FC Well

This action is subject to technical and procedural review by the Bureau of Land Management and appeal pursuant to 43 CFR 1.101-11.

DRILLING OPERATIONS AUTHORIZED ARE SUBJECT TO COMPLIANCE WITH ATTACHED "GENERAL REQUIREMENTS".

NMOCB

District I
PO Box 1980, Hobbs, NM 88241-1980

District II
PO Drawer 00, Artesia, NM 88211-0719

District III
1000 Rio Brazos Rd., Aztec, NM 87410

District IV
PO Box 2088, Santa Fe, NM 87504-2088

State of New Mexico
Energy, Minerals & Natural Resources Department

OIL CONSERVATION DIVISION

PO Box 2088
Santa Fe, NM 87504-2088

Form C-10
Revised February 21, 199
Instructions on bac
Submit to Appropriate District Office
State Lease - 4 Copies
Fee Lease - 3 Copies

☐ AMENDED REPORT

RECEIVED
CITO FARMINGTON NM

WELL LOCATION AND ACREAGE DEDICATION PLAT

*API Number 30-045-33638		*Pool Code 71629	*Pool Name Basin Fruitland Coal
*Property Code 7325 7326	*Property Name MORRIS A		*Well Number 15
*GRID No. 14538	*Operator Name BURLINGTON RESOURCES OIL & GAS COMPANY, LP		*Elevation 5816'

10 Surface Location


UL or lot no. P	Section 20	Township 30N	Range 11W	Lot Idn 9	Feet from the 660	North/South line SOUTH	Feet from the 660	East/West line EAST	County SAN JUAN
--------------------	---------------	-----------------	--------------	--------------	----------------------	---------------------------	----------------------	------------------------	--------------------

11 Bottom Hole Location If Different From Surface

UL or lot no. P	Section	Township	Range	Lot Idn	Feet from the	North/South line	Feet from the	East/West line	County
--------------------	---------	----------	-------	---------	---------------	------------------	---------------	----------------	--------

12 Dedicated Acres FC 319.37 ac S2	13 Joint or Infill	14 Consolidation Code	15 Order No.
---------------------------------------	--------------------	-----------------------	--------------

NO ALLOWABLE WILL BE ASSIGNED TO THIS COMPLETION UNTIL ALL INTERESTS HAVE BEEN CONSOLIDATED
OR A NON-STANDARD UNIT HAS BEEN APPROVED BY THE DIVISION

2621.52'		2537.70'		17 OPERATOR CERTIFICATION I hereby certify that the information contained herein is true and complete to the best of my knowledge and belief <i>Patsy Clugston</i> Signature Patsy Clugston Printed Name Sr. Regulatory Specialist Title 2/15/2006 Date	
2639.34'	LOT 3	LOT 2	LOT 1		
	LOT 4	LOT 5			
20		5297.16'		18 SURVEYOR CERTIFICATION I hereby certify that the well location shown on this plat was plotted from field notes of actual surveys made by me or under my supervision, and that the same is true and correct to the best of my belief. Survey Date: JANUARY 11, 2006 Signature and Seal of Professional Surveyor  JASON C. EDWARDS Certificate Number 15269	
2622.18'	LEASE FEE	LEASE FEE	LEASE USA SF-078138	LOT 6	
LOT 7 LEASE USA SF-078138 LOT 8		LAT: 36°47.5347'N LONG: 108°00.3940'W DATUM: NAD27		LOT 9	
2624.16'		1985'		660'	
		2665.08'		660'	

Office

Energy, Minerals and Natural Resources

May 27, 2004

District I

1625 N. French Dr., Hobbs, NM 88240

District II

1301 W. Grand Ave., Artesia, NM 88210

District III

1000 Rio Brazos Rd., Aztec, NM 87410

District IV

1220 S. St. Francis Dr., Santa Fe, NM 87505

OIL CONSERVATION DIVISION

1220 South St. Francis Dr.

Santa Fe, NM 87505

WELL API NO.

30-045-

33638

5. Indicate Type of Lease

STATE ☐FEE ☐

6. State Oil & Gas Lease No.

Federal SF-078138

7. Lease Name or Unit Agreement Name

Morris A

8. Well Number

#1S

9. OGRID Number

14538

10. Pool name or Wildcat

Basin Fruitland Coal

SUNDRY NOTICES AND REPORTS ON WELLS
(DO NOT USE THIS FORM FOR PROPOSALS TO DRILL OR TO DEEPEN OR PLUG BACK TO A DIFFERENT RESERVOIR. USE "APPLICATION FOR PERMIT" (FORM C-101) FOR SUCH PROPOSALS.)

1. Type of Well:

Oil Well ☐Gas Well ☒

Other

2. Name of Operator

BURLINGTON RESOURCES OIL & GAS COMPANY LP

3. Address of Operator

3401 E. 30TH STREET, FARMINGTON, NM 87402

4. Well Location

Unit Letter P : 660' feet from the South line and 660 feet from the East line
 Section 20 Township 30N Range 11W NMPM County San Juan

11. Elevation (Show whether DR, RKB, RT, GR, etc.)

5816' GL

Pit or Below-grade Tank Application

☐ or Closure ☐Pit type New Drill

Depth to Groundwater

>100'

Distance from nearest fresh water well

>1000'

Distance from nearest surface water

<1000'

Pit Liner Thickness:

12

mil

Below-Grade Tank:

Volume

bbls;

Construction Material

12. Check Appropriate Box to Indicate Nature of Notice, Report or Other Data

NOTICE OF INTENTION TO:

PERFORM REMEDIAL WORK ☐TEMPORARILY ABANDON ☐PULL OR ALTER CASING ☐PLUG AND ABANDON ☐CHANGE PLANS ☐MULTIPLE COMPL ☐

OTHER:

New Drill ☒

SUBSEQUENT REPORT OF:

REMEDIAL WORK ☐COMMENCE DRILLING OPNS. ☐CASING/CEMENT JOB ☐ALTERING CASING ☐P AND A ☐OTHER: ☐

13. Describe proposed or completed operations. (Clearly state all pertinent details, and give pertinent dates, including estimated date of starting any proposed work). SEE RULE 1103. For Multiple Completions: Attach wellbore diagram of proposed completion or recompletion.

New Drill, Lined:

Burlington Resources proposes to construct a new drilling pit and an associated vent/flare pit. Based on Burlington's interpretation of the Ecosphere's risk ranking criteria, the new drilling pit will be a lined pit as detailed in Burlington's Revised Drilling / Workover Pit Construction / Operation Procedures dated November 11, 2004 on file at the NMOCD office. A portion of the vent/flare pit will be designed to manage fluids and that portion will be lined as per the risk ranking criteria. Burlington Resources anticipates closing these pits according to the Drilling / Workover Pit Closure Procedure dated August 2, 2004 on file at the NMOCD office

I hereby certify that the information above is true and complete to the best of my knowledge and belief. I further certify that any pit or below-grade tank has been/will be constructed or closed according to NMOCD guidelines ☐ a general permit ☒ or an (attached) alternative OCD-approved plan ☐.

SIGNATURE

Patsy Clugston

TITLE

Sr. Staff Specialist

DATE

2/28/2006

Type or print name

Patsy Clugston

E-mail address:

pclubgston@br-inc.com

Telephone No.

505-326-9518

For State Use Only

APPROVED BY

TITLE

DEPUTY OIL & GAS INSPECTOR, DIST. 4

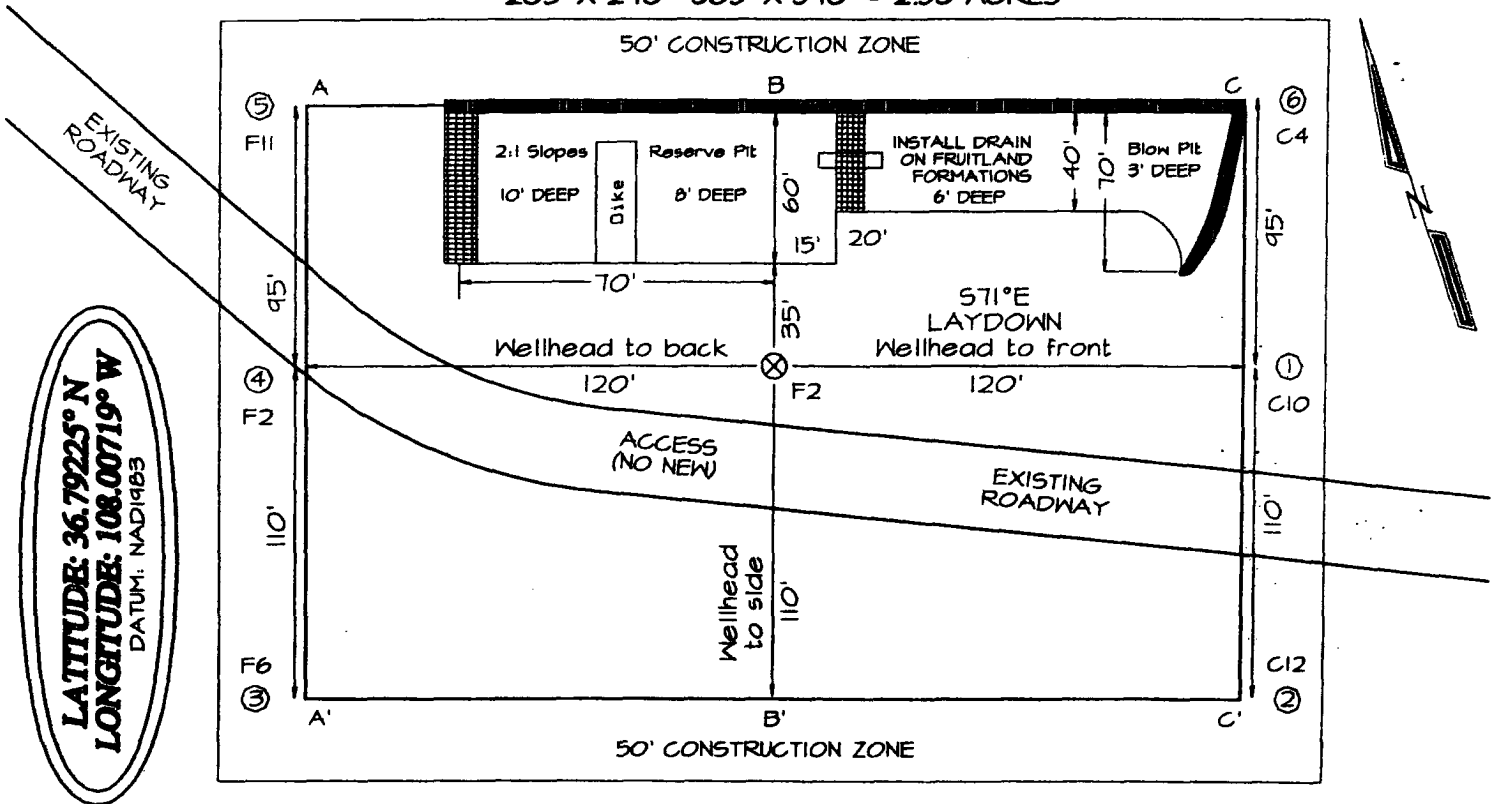
DATE

APR 03 2006

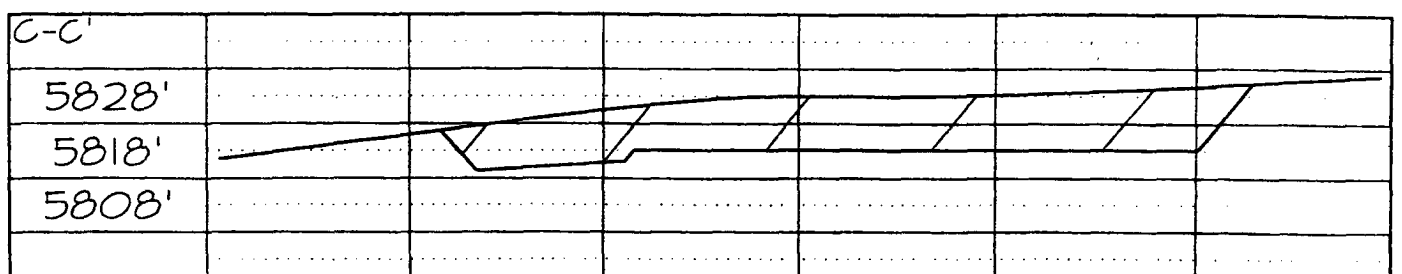
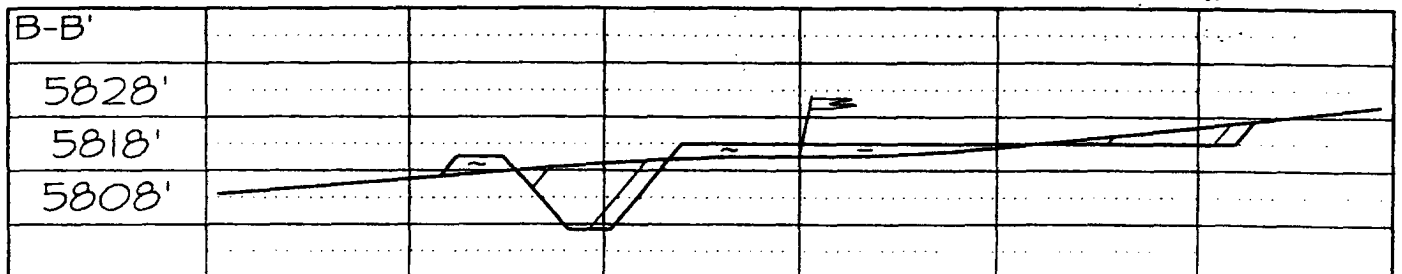
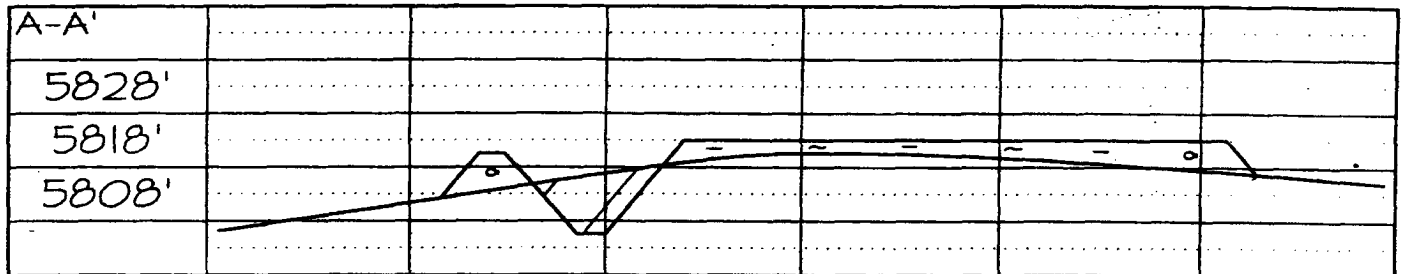
Conditions of Approval (if any):

BURLINGTON RESOURCES OIL & GAS COMPANY MORRIS A #1S
660' FSL & 660' FEL, SECTION 20, T30N, R11W, NMPM, SAN JUAN COUNTY, NM
GROUND ELEVATION: 5816' DATE: JANUARY 11, 2006

205' X 240' 305' X 340' = 2.38 ACRES



Reserve Pit Dike: to be 8' above Deep side (overflow - 3' wide and 1' above shallow side).
 Blow Pit: overflow pipe halfway between top and bottom and to extend over plastic liner and into blow pit.



Note: Contractor should call One-Call for location of any marked or unmarked buried pipelines or cables on well pad and/or access road at least two (2) working days prior to construction

OPERATIONS PLAN

Well Name: Morris A #1S
Location: Unit P (SESE), 660' FSL & 660' FEL, Section 20, T30N, R11W
 San Juan County, New Mexico
 Latitude 36° 47.5347'N; Longitude 108° 00.3940'W
Formation: Basin Fruitland Coal
Elevation: 5816' GR

Formation:	Top	Bottom	Contents
Surface	San Jose		
Ojo Alamo	720'		
Kirtland	843'	1858'	gas
T/Fruitland	1925'		gas
Pictured Cliffs	2150'		
Total Depth	2350'		

Logging Program: None

Mud Program:

<u>Interval</u>	<u>Type</u>	<u>Weight</u>	<u>Vis. Fluid Loss</u>
0- 120'	Spud Mud/Air/AirMist	8.4-8.9	40-50 no control
120-2350'	Non-dispersed	8.4-9.5	30-60 no control

Casing Program:

<u>Hole Size</u>	<u>Depth Interval</u>	<u>Csg.Size</u>	<u>Wt.</u>	<u>Grade</u>
8 $\frac{3}{4}$ "	0 - 120'	7"	20.0#	J-55
6 $\frac{1}{4}$ "	0 - 2350'	4 1/2"	10.5#	J/K-55

Tubing Program:

0 - 2350'	2 3/8"	4.7#	J-55
-----------	--------	------	------

Float Equipment: 7" surface casing - guide shoe. Centralizers will be run in accordance with Onshore Order #2.

4 1/2" production casing - float shoe and float collar on bottom. Centralizers run every third joint above shoe to the base of the Ojo Alamo @ 843'. Two turbolizing type centralizers - one below and one into the base of the Ojo Alamo @ 843'. Standard centralizers thereafter every fourth joint up to the base of the surface pipe.

Wellhead Equipment: 7" x 4 1/2" x 2 3/8" x 11" 2000 psi xmas tree assembly.

February 28, 2006

Cementing:

7" surface casing Pre-Set Drilled - Cement with Type I, II cement with 20% flyash mixed at 14.5 ppg, 1.61 cu ft per sack yield. (Bring cement to surface). Wait on cement for 24 hours for pre-set holes before pressure testing or drilling out from under surface.

7" surface casing - Cement with 42 sx Type III cement with 0.25 pps Celloflake, 3% CaCl.
(54cu ft of slurry @ 1.28 yield). 200% excess, bring cement to surface. Wait on cement for 8 hrs for conventionally set holes before pressure testing or drilling out from under surface.
WOC until cement establishes 250 psi compressive strength prior to NU of BOPE.

4 1/2" production casing - Cement with 111 sx (237 cu ft of slurry @ 2.13 yield) Premium Lite with 3% calcium chloride, 5 pps LCM-1, and 1/4#/sack celloflake, 0.4% FL-52, & 0.4% SMS. Tail with 90sx (124 cu ft of slurry @ 1.38 yield) Type III cmt with 1% calcium chloride, 1/4#/sack Celloflake and 0.2% FL-52. Total of 361 cf - 50% excess to circulate to surface.

BOP and tests:

Surface to TD - 11" 2000 psi (minimum double gate BOP stack (Reference Figure #1 and #2). Prior to drilling out surface casing, test ~~rams~~ ^{BOP} to 600 psi/30 min.

Completion - 6" 2000 psi (minimum) double gate BOP stack (Reference Figure #2). Prior to completion operations, test rams and casing to 1500 psi/30 min.

From surface to TD - choke manifold (Reference Figure #3).

Pipe rams will be actuated at least once each day and blind rams actuated once each trip to test proper functioning. An upper kelly cock valve with handle and drill string safety valves to fit each drill string will be maintained and available on the rig floor.

Additional information:

- * The Fruitland Coal formation will be completed.
- * Anticipated pore pressure for the Fruitland is between 600 - 700 psi.
- * This gas is dedicated.
- * The south half of section 20 is dedicated to Fruitland Coal.
- * New casing will be utilized.
- * Pipe movement (either rotation or reciprocation) will be done if hole conditions permit.

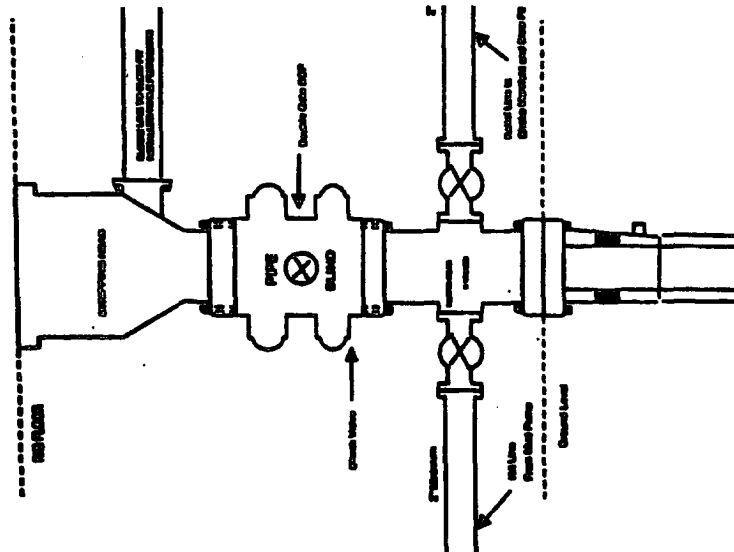
Alan Martin
Drilling Engineer

3/2/2006
Date

Blowout preventor equipment (BOPE) tests must be performed using an appropriately sized test plug. The BOPE test must be performed and recorded using a test pump, calibrated test gauges and a properly calibrated strip or chart recorder. The test must be recorded in the driller's log and will include a low pressure test requirement of 250 psig held for five minutes and a high pressure test requirement held for ten minutes as described in Onshore Order No. 2 or otherwise authorized in the Application for Permit to Drill (APD). A successful BOPE test using a test plug is considered when no pressure drop occurs over the duration of the test. Test gauges and recorders must be of the proper range and resolution commensurate with the authorized test pressure. Where intermediate casing strings are used, only one BOPE test will be necessary contingent upon the test being conducted to the highest approved test pressure to which the BOPE will be exposed. Casing pressure tests must be held for 30 minutes with no more than a 10 percent pressure drop during the duration of the test.

BURLINGTON RESOURCES

Completion/Workover Rig
BOP Configuration
2,000 psi System



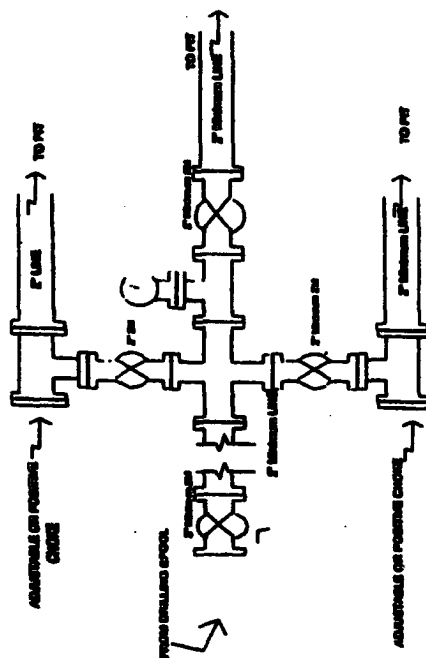
Minimum BOP Installation for all Completion/Workover Operations. 7-1/16" bore, 2000 psi minimum working pressure double gate BOP to be equipped with blind and pipe rams. A stripping head to be installed on the top of the BOP. All BOP equipment is 2000 psi working pressure or greater including 600 psi stripping head.

Figure #2

4-20-01

BURLINGTON RESOURCES

Drilling Rig
Choke Island Configuration
2000 psi System



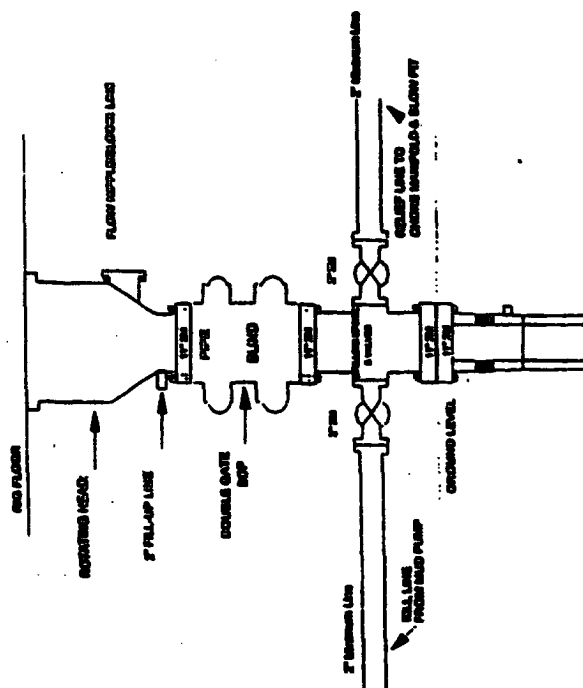
Choke Island Installation from Surface Casing Point to Total Depth. 2,000psi working pressure equipment with two chokes.

Figure #3

4-20-01

Burlington Resources

Drilling Rig
2000 psi System



BOP Installation from Surface Casing Point to Total Depth. 1 1/2" Bore 2000 psi minimum working pressure double gate BOP to be equipped with blind and pipe rams. A stripping head to be installed on top of the BOP. All BOP equipment is 2,000 psi working pressure.

Figure #1