

District I (575) 393-6161
1625 N. French Dr., Hobbs, NM 88240
District II (575) 748-1283
811 S. First St., Artesia, NM 88210
District III (505) 334-6178
1000 Rio Brazos Road, Aztec, NM 87410
District IV (505) 827-8198
1220 S. St. Francis Dr., Santa Fe, NM 87505

State of New Mexico
Energy Minerals and Natural Resources

Oil Conservation Division
1220 South St. Francis Dr.
Santa Fe, NM 87505

Form C-106
Revised August 1, 2011

ACT Permit No.

3-23

NOTICE OF INTENTION TO UTILIZE AUTOMATIC CUSTODY TRANSFER EQUIPMENT

Operator WPX Energy Production, LLC

Address 721 S. Main, Aztec, NM 87410 County San Juan

Lease(s) to be served by this ACT Unit: NMNM-135216A (W Lybrook Unit)

Pool(s) to be served by this ACT Unit Lybrook Mancos W (98157)

Location of ACT System: Unit O Section 8 Township 23N Range 8W

Order No. authorizing commingling between leases if more than one lease is to be served by this system.

R-14051

Date 09/08/2015

Order No. authorizing commingling between pools if more than one pool is to be served by this system

N/A

Date N/A

OIL CONS. DIV DIST. 3

MAR 09 2017

Authorized transporter of oil from this system Whiptail Midstream, LLC

Transporter's address 15 West 6th Street, Tulsa, OK 74119

Maximum expected daily through-put for this system: 8,000 BBL/Day

If system fails to transfer oil due to malfunction or otherwise, waste by overflow will be averted by:

CHECK ONE: A. ☐ Automatic shut-down facilities B. ☒ Providing adequate available capacity to receive production
as required by 19.15.18.15.C(8) NMAC during maximum unattended time of lease operation
19.15.18.15.C(9) NMAC

If "A" above is checked, will flowing wells be shut-in at the header manifold or at the wellhead?

Maximum well-head shut-in pressure _____

If "B" above is checked, how much storage capacity is available above the normal high working level of the

surge tank 900 BBLs.

What is the normal maximum unattended time of lease operation? Sixteen (16) Hours.

What device will be used for measuring oil in this ACT unit?

CHECK ONE: ☐ Positive displacement meter ☐ Weir-type measuring vessel
☐ Positive volume metering chamber ☒ Other; describe Coriolis Meter

Remarks: This LACT will be selling to pipeline.

OPERATOR:

I hereby certify above information is true and complete to best of my knowledge and subject ACT system will be installed and operated in accordance with Rule 19.15.18.15 NMAC. Approval of this Form

C-106 does not eliminate necessity of an approved C-104 prior to running any oil or gas from this system.

Signature

Printed Name & Title Robert Jordan, Production Superintendent

E-mail Address robert.jordan@wpxenergy.com

Date _____ Telephone (505) 333-1850

OIL CONSERVATION DIVISION

Approved by:

Title: Deputy Oil & Gas Inspector,
District #3

Date: 3/28/17

INSTRUCTIONS: Submit one copy of Form C-106 with following attachments to appropriate district office.

- 1) Lease plat showing all wells which will be produced in ACT system.
- 2) Schematic diagram of battery and ACT equipment showing all major components and means employed to prove accuracy of measuring device.
- 3) Letter from transporter agreeing to utilization of ACT system as shown on schematic diagram.

**NOTICE OF INTENTION TO UTILIZE AUTOMATIC CUSTODY TRANSFER EQUIPMENT
WLU REMOTE #1 PIPELINE LACT UNIT**

WELLS TO BE SERVED BY PIPELINE LACT UNIT:

- W Lybrook Unit 701H / API #30-045-35725 / UNIT M (SW/SW) Sec. 9, T23N, R8W, NMPM
- W Lybrook Unit 702H / API #30-045-35726 / UNIT M (SW/SW) Sec. 9, T23N, R8W, NMPM
- W Lybrook Unit 703H / API #30-045-35727 / UNIT N (SE/SW) Sec. 8, T23N, R8W, NMPM
- W Lybrook Unit 704H / API #30-045-35728 / UNIT M (SW/SW) Sec. 8, T23N, R8W, NMPM
- W Lybrook Unit 711H / API #30-045-35809 / UNIT N (SE/SW) Sec. 8, T23N, R8W, NMPM
- W Lybrook Unit 713H / API #30-045-35808 / UNIT N (SE/SW) Sec. 8, T23N, R8W, NMPM
- W Lybrook Unit 743H / API #30-045-35729 / UNIT N (SE/SW) Sec. 8, T23N, R8W, NMPM
- W Lybrook Unit 744H / API #30-045-35730 / UNIT M (SW/SW) Sec. 8, T23N, R8W, NMPM

19.15.18.15 AUTOMATIC CUSTODY TRANSFER EQUIPMENT:

A. Oil shall be received and measured in facilities of an approved design. The facilities shall permit the testing of each well at reasonable intervals and may be comprised of manually gauged, closed stock tanks for which the operator of the ACT system has prepared proper strapping tables, or of ACT equipment. The division shall permit ACT equipment's use only after the operator complies with the following. The operator shall file with the division form C-106 and receive approval for use of the ACT equipment prior to transferring oil through the ACT system. The carrier shall not accept delivery of oil through the ACT system until the division has approved form C-106.

- *Summary is attached to Form C-106 Notice of Intent to Utilize Automatic Custody Transfer Equipment*

B. The operator of the ACT system shall submit form C-106 to the appropriate division district office, which is accompanied by the following:

- (1) plat of the lease showing all wells that the any well operator will produce into the ACT system;

- *Attached as part of Form C-106 Notice of Intent*

(2) schematic diagram of the ACT equipment, showing on the diagram all major components such as surge tanks and their capacity, extra storage tanks and their capacity, transfer pumps, monitors, reroute valves, treaters, samplers, strainers, air and gas eliminators, back pressure valves and metering devices (indicating type and capacity, i.e. whether automatic measuring tank, positive volume metering chamber, weir-type measuring vessel or positive displacement meter); the schematic diagram shall also show means employed to prove the measuring device's accuracy; and

- *Attached as part of Form C-106 Notice of Intent*

- (3) letter from transporter agreeing to utilization of ACT system as shown on schematic diagram.

- *Attached as part of Form C-106 Notice of Intent*

C. The division shall not approve form C-106 unless the operator of the ACT system will install and operate the ACT system in compliance with the following requirements.

(1) Provision is made for accurate determination and recording of uncorrected volume and applicable temperature, or of temperature corrected volume. The system's overall accuracy shall equal or surpass manual methods.

- *The LACT system is more accurate when compared to a manual tank sale. It is proved per BLM Onshore Order #4 Measurement of Oil and API MPMS Chapter 4 Proving Systems; with a volumetric prover that meets the requirements set forth in Onshore Order #4. The LACT also has a temperature RTD which will be calibrated semi-annually, unless more frequent verification is requested by the division.*

(2) Provision is made for representative sampling of the oil transferred for determination of API gravity and BS&W content.

- *The LACT is equipped with a flow proportional sampler (sample probe and actuated valve). The sampled fluid is stored in a sealed cylinder that is used for API gravity and S&W determination.*

(3) Provision is made if required by either the oil's producer or the transporter to give adequate assurance that the ACT system runs only merchantable oil.

- *The LACT is equipped with a water cut analyzer that communicates with the flow computer. When the S&W set point is reached the divert valve will engage sending non-merchantable oil to*

a divert tank. The set point can be adjusted in the flow computer but only if agreed upon by both shipper and producer.

(4) Provision is made for set-stop counters to stop the flow of oil through the ACT system at or prior to the time the allowable has been run. Counters shall provide non-reset totalizers that are visible for inspection at all times.

- *The Coriolis meter has non-resettable totalizer which is always visibly available on the LCD display.*

(5) Necessary controls and equipment are enclosed and sealed, or otherwise arranged to provide assurance against, or evidence of, accidental or purposeful mismeasurement resulting from tampering.

- *Required ports are sealed and tracked in the seal log.*

(6) The ACT system's components are properly sized to ensure operation within the range of their established ratings. All system components that require periodic calibration or inspection for proof of continued accuracy are readily accessible; the frequency and methods of the calibration or inspection shall be as set forth in Paragraph (12) of Subsection C of 19.15.18.15 NMAC.

- *The Coriolis is proved per BLM Onshore Order #4 Measurement of Oil and API MPMS Chapter 4 Proving Systems; with a volumetric prover that meets the requirements set forth in Onshore Order #4. The prover is NIST traceable and water drawn on a bi-annual basis. Proving will be consistent with Onshore Order #4, unless a variance is granted by the Division. NMOCD representatives are sent the schedule to witness if desired. The temperature transmitter is verified on a semi-annual basis, unless more frequent verification is requested by the Division. The water cut analyzer is calibrated as needed.*

(7) The control and recording system includes adequate fail-safe features that provide assurance against mismeasurement in the event of power failure, or the failure of the ACT system's component parts.

- *In the event of power failure, the divert valve mechanically goes to "failed state" and no longer sales oil but only sends it to the divert tank.*
- *All of the historized volume data is stored in flow computer memory with battery backup and is also transmitted by SCADA, multiple times a day, to an office server. So even during a power failure no oil volume is lost.*
- *In the event of a malfunction, the LACT unit is programmed to shut off and divert valve is forced to close and no longer sales oil but only sends it to the divert tank. The malfunction is also logged by the flow computer.*

(8) The ACT system and allied facilities include fail-safe equipment as may be necessary, including high level switches in the surge tank or overflow storage tank that, in the event of power failure or malfunction of the ACT or other equipment, will shut down artificially lifted wells connected to the ACT system and will shut in flowing wells at the well-head or at the header manifold, in which latter case the operator of the ACT system shall pressure test all flowlines to at least 1½ times the maximum well-head shut-in pressure prior to the ACT system's initial use and every two years thereafter.

- *Hi level switches are in place and will shut the well in at the inlet to the production unit in the event of a full tank. Flow lines were tested to 1 ½ times shut in pressure at initial construction. Testing will commence every two years to ensure piping integrity.*

(9) As an alternative to the requirements of Paragraph (8) of Subsection C of 19.15.18.15 NMAC the producer shall provide and at all times maintain a minimum of available storage capacity above the normal high working level of the surge tank to receive and hold the amount of oil that may be produced during maximum unattended time of lease operation.

- *N/A*

(10) In all ACT systems employing automatic measuring tanks, weir-type measuring vessels, positive volume metering chambers or any other volume measuring container, the container and allied components shall be properly calibrated prior to initial use and shall be operated, maintained and inspected as necessary to ensure against incrustation, changes in clingage factors, valve leakage or other leakage and improper action of floats, level detectors, etc.

- *N/A – Coriolis Meter*

(11) In ACT systems employing positive displacement meters, the meter and allied components shall be properly calibrated prior to initial use and shall be operated, maintained and inspected as necessary to ensure against oil mismeasurement.

- *The Coriolis is proved per BLM Onshore Order #4 Measurement of Oil and API MPMS Chapter 4 Proving Systems; with a volumetric prover that meets the requirements set forth in Onshore Order #4. The prover is NIST traceable and water drawn on a bi-annual basis. Monthly proving will continue per the rule, unless a variance is granted by the Division. NMOCD representatives are sent the schedule to witness if desired. The temperature transmitter is verified on a semi-annual basis, unless more frequent verification is requested by the Division.*

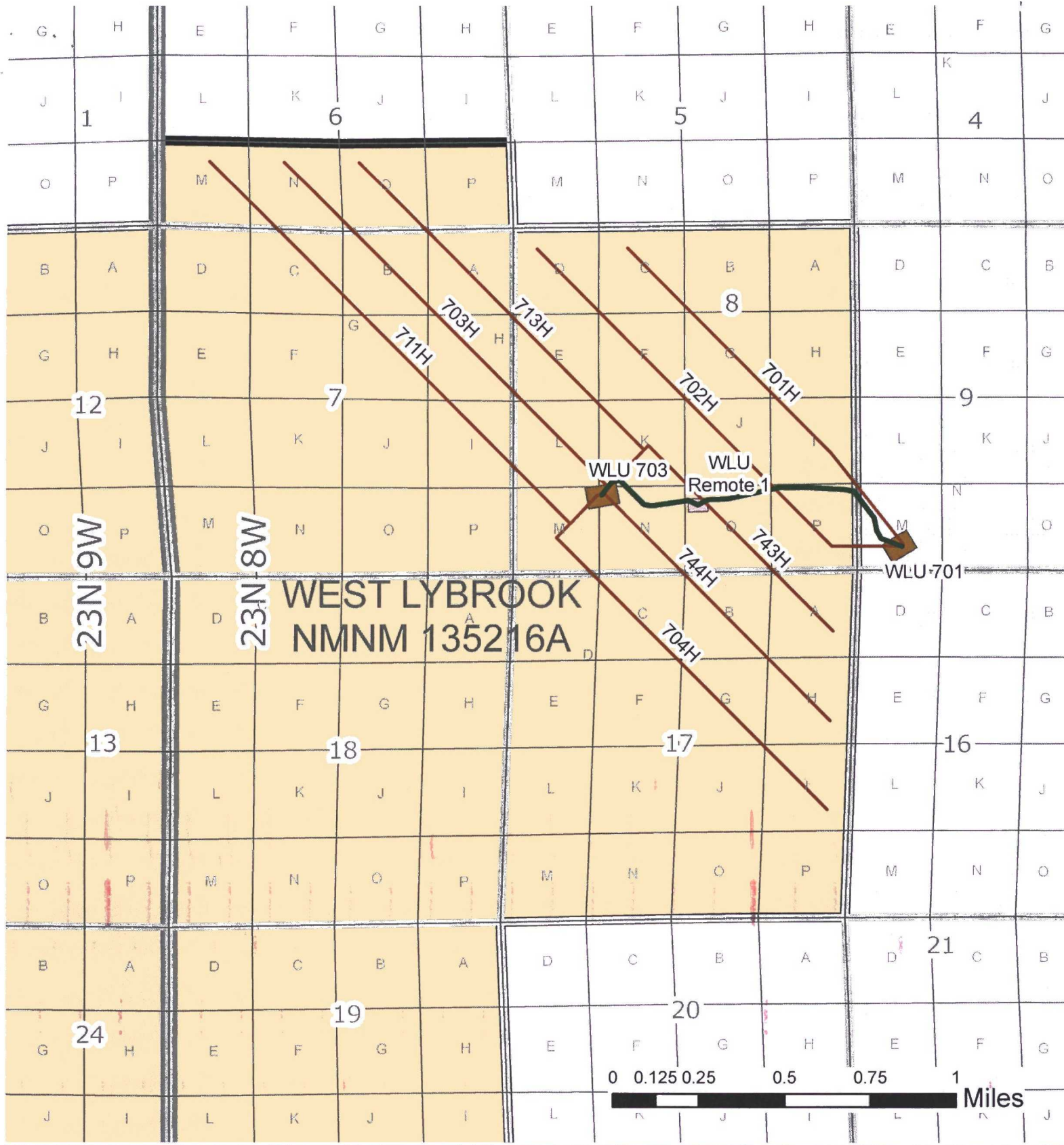
(12) The operator of the ACT system shall check the measuring and recording devices of ACT systems for accuracy at least once each month unless it has obtained an exception to such determination from the division. Where applicable, the operator of the ACT system shall use API standard 1101, Measurement of Petroleum Hydrocarbons by Positive Displacement Meter. Meters may be proved against master meters, portable prover tanks or prover tanks permanently installed on the lease. If the operator of the ACT system uses permanently installed prover tanks, the distance between the opening and closing levels and the provision for determining the opening and closing readings shall be sufficient to detect variations of 5/100 of one percent. The operator of the ACT system shall file reports of determination on the division form entitled "meter test report" or on another acceptable form in duplicate with the appropriate division district office.






- *The Coriolis is proved per BLM Onshore Order #4 Measurement of Oil and API MPMS Chapter 4 Proving Systems; with a volumetric prover that meets the requirements set forth in Onshore Order #4. The prover is NIST traceable and water drawn on a bi-annual basis. Monthly proving will continue per the rule, unless a variance is granted by the Division. NMOCD representatives are sent the schedule to witness if desired. The temperature transmitter is verified on a semi-annual basis, unless more frequent verification is requested by the Division.*

(13) To obtain an exception to the requirement in Paragraph (12) of Subsection C of 19.15.18.15 NMAC that all measuring and recording devices be checked for accuracy once each month, either the producer or transporter may file a request with the director setting forth facts pertinent to the exception. The application shall include a history of the average factors previously obtained, both tabulated and plotted on a graph of factors versus time, showing that the particular installation has experienced no erratic drift. The applicant shall also furnish evidence that the other interested party has agreed to the exception. The director may then set the frequency for determination of the system's accuracy at the interval which the director deems prudent.

- *N/A*

D. The division may revoke its approval of an ACT system's form C-106 if the system's operator fails to operate it in compliance with 19.15.18.15 NMAC.



-  Pipeline
-  Laterals
-  Remote Pad w/LACT Equip & Tank Battery
-  Well Pad
-  Approved Unit

Scale (absolute) -
1:24,000



WLU Remote 1
Lease Plat Map
San Juan County, NM

District I
1625 N. French Drive, Hobbs, NM 88240
Phone: (575) 393-6161 Fax: (575) 393-0720

District II
811 S. First Street, Artesia, NM 88210
Phone: (575) 748-1283 Fax: (575) 748-9720

District III
1000 Rio Brazos Road, Aztec, NM 87410
Phone: (505) 334-6178 Fax: (505) 334-6170

District IV
1220 S. St. Francis Drive, Santa Fe, NM 87505
Phone: (505) 476-3460 Fax: (505) 476-3462

State of New Mexico
Energy, Minerals & Natural Resources Department

Form C-102
Revised August 1, 2011

Submit one copy to
Appropriate District Office

OIL CONSERVATION DIVISION

1220 South St. Francis Drive
Santa Fe, NM 87505

☐ AMENDED REPORT

WELL LOCATION AND ACREAGE DEDICATION PLAT

*API Number 30-045-35725		*Pool Code 98157	*Pool Name LYBROOK MANCOS W
*Property Code 315250	*Property Name W LYBROOK UNIT		*Well Number 701H
*GRID, No. 120782	*Operator Name WPX ENERGY PRODUCTION, LLC		*Elevation 6930'

¹⁰ Surface Location

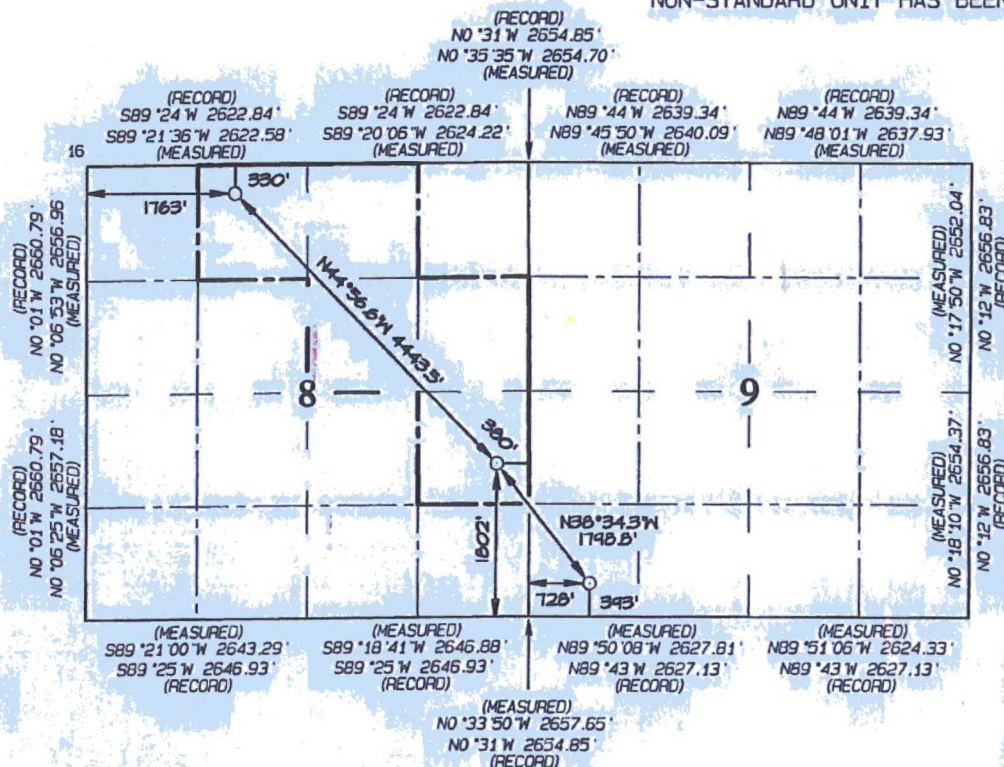
UL or lot no.	Section	Township	Range	Lot Idn	Feet from the	North/South line	Feet from the	East/West line	County
M	9	23N	8W		393	SOUTH	728	WEST	SAN JUAN

¹¹ Bottom Hole Location If Different From Surface

UL or lot no.	Section	Township	Range	Lot Idn	Feet from the	North/South line	Feet from the	East/West line	County
C	8	23N	8W		330	NORTH	1763	WEST	SAN JUAN

*Dedicated Acres 200.0	NE/4 NW/4, W/2 NE/4 SE/4 NE/4, NE/4 SE/4 Section 8	*Joint or Infill	*Consolidation Code	*Order No. R-14051 - 12,807.24 Acres
----------------------------------	--	------------------	---------------------	--

NO ALLOWABLE WILL BE ASSIGNED TO THIS COMPLETION
UNTIL ALL INTERESTS HAVE BEEN CONSOLIDATED OR A
NON-STANDARD UNIT HAS BEEN APPROVED BY THE DIVISION



¹⁷ OPERATOR CERTIFICATION

I hereby certify that the information contained herein is true and complete to the best of my knowledge and belief, and that this organization either owns a working interest or unleased mineral interest in the land including the proposed bottom-hole location or has a right to drill this well at this location pursuant to a contract with an owner of such a mineral or working interest, or to a voluntary pooling agreement or a compulsory pooling order heretofore entered by the Division.

Signature: *[Signature]* Date: **3-6-17**
Printed Name: **Walter P. Sorenson**
E-mail Address: **Walter.P.Sorenson@wpenergy.com**

¹⁸ SURVEYOR CERTIFICATION

I hereby certify that the well location shown on this plat was plotted from field notes of actual surveys made by me or under my supervision, and that the same is true and correct to the best of my belief.

Date Revised: **NOVEMBER 2, 2015**
Date of Survey: **AUGUST 25, 2015**

Signature and Seal of Professional Surveyor



JASON C. EDWARDS
Certificate Number **15269**

END-OF-LATERAL
330' FNL 1763' FNL
SECTION 8, T23N, R8W
LAT: 36.248024°N
LONG: 107.706972°W
DATUM: NAD1927
LAT: 36.248036°N
LONG: 107.707584°W
DATUM: NAD1983

POINT-OF-ENTRY
1802' FSL 380 FSL
SECTION 8, T23N, R8W
LAT: 36.239372°N
LONG: 107.696342°W
DATUM: NAD1927
LAT: 36.239385°N
LONG: 107.696954°W
DATUM: NAD1983

SURFACE LOCATION
393' FSL 728 FNL
SECTION 9, T23N, R8W
LAT: 36.235504°N
LONG: 107.692546°W
DATUM: NAD1927
LAT: 36.235517°N
LONG: 107.693157°W
DATUM: NAD1983

District IV
1220 S. St. Francis Drive, Santa Fe, NM 87505
Phone: (505) 476-3460 Fax: (505) 476-3462

1220 South St. Francis Drive
Santa Fe, NM 87505

Submit one copy to
Appropriate District Office

AMENDED REPORT

*API Number 30-045-35726		*Pool Code 98157	*Pool Name LYBROOK MANCOS W
*Property Code 315250	*Property Name W LYBROOK UNIT		*Well Number 702H
*OGRID No. 120782	*Operator Name WPX ENERGY PRODUCTION, LLC		*Elevation 6930'

UL or lot no.	Section	Township	Range	Lot Idn	Feet from the	North/South line	Feet from the	East/West line	County
M	9	23N	8W		371	SOUTH	693	WEST	SAN JUAN

UL or lot no.	Section	Township	Range	Lot Idn	Feet from the North/South line	Feet from the East/West line	County		
D	8	23N	8W		436	NORTH	330	WEST	SAN JUAN

Dedicated Acres 280.0	W/2 NW/4, SE/4 NW/4 NE/4 SW/4, W/2 SE/4 SE/4 SE/4 - Section 8	" Joint or Infill"	" Consolidation Code	" Order No. R-14051 - 12,807.24 Acres
--------------------------	---	--------------------	----------------------	--

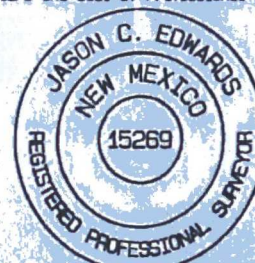
LAT: 36.247707°N
LONG: 107.712443°W
DATUM: NAD1983

LAT: 36.235063°N
LONG: 107.696907°W
DATUM: NAD1983

LAT: 36.235459°N
LONG: 107.693273°W
DATUM: NAD1983

Signature: [Signature] Date: 3-6-17
Printed Name: Deey Granillo
E-mail Address: DeeyGranillo@verizon.com

Signature and Seal of Professional Surveyor



JASON C. EDWARDS
Certificate Number 15269

District I
1625 N. French Drive, Hobbs, NM 88240
Phone: (575) 393-6161 Fax: (575) 393-0720

District II
811 S. First Street, Artesia, NM 88210
Phone: (575) 748-1283 Fax: (575) 748-9720

District III
1000 Rio Brazos Road, Aztec, NM 87410
Phone: (505) 334-6178 Fax: (505) 334-6170

District IV
1220 S. St. Francis Drive, Santa Fe, NM 87505
Phone: (505) 476-3460 Fax: (505) 476-3462

State of New Mexico
Energy, Minerals & Natural Resources Department

Form C-102
Revised August 1, 2011

Submit one copy to
Appropriate District Office

OIL CONSERVATION DIVISION

1220 South St. Francis Drive
Santa Fe, NM 87505

☐ AMENDED REPORT

As - Drilled

WELL LOCATION AND ACREAGE DEDICATION PLAT

*API Number 30-045-35727		*Pool Code 98157	*Pool Name LYBROOK MANCOS W
*Property Code 315250	*Property Name W LYBROOK UNIT		*Well Number 703H
*GRID No. 120782	*Operator Name WPX ENERGY PRODUCTION, LLC		*Elevation 6823'

¹⁰ Surface Location

UL or lot no.	Section	Township	Range	Lot Idn	Feet from the	North/South line	Feet from the	East/West line	County
N	8	23N	8W		1212	SOUTH	1366	WEST	SAN JUAN

¹¹ Bottom Hole Location If Different From Surface

UL or lot no.	Section	Township	Range	Lot Idn	Feet from the	North/South line	Feet from the	East/West line	County
N	6	23N	8W	11	1040	SOUTH	1950	WEST	SAN JUAN

¹² Dedicated Acres 323.68

SE/4 SW/4, SW/4 SE/4 (Section 6)
N/2 NE/4, SE/4 NE/4 (Section 7)
N/2 SW/4, SW/4 NW/4 (Section 8)

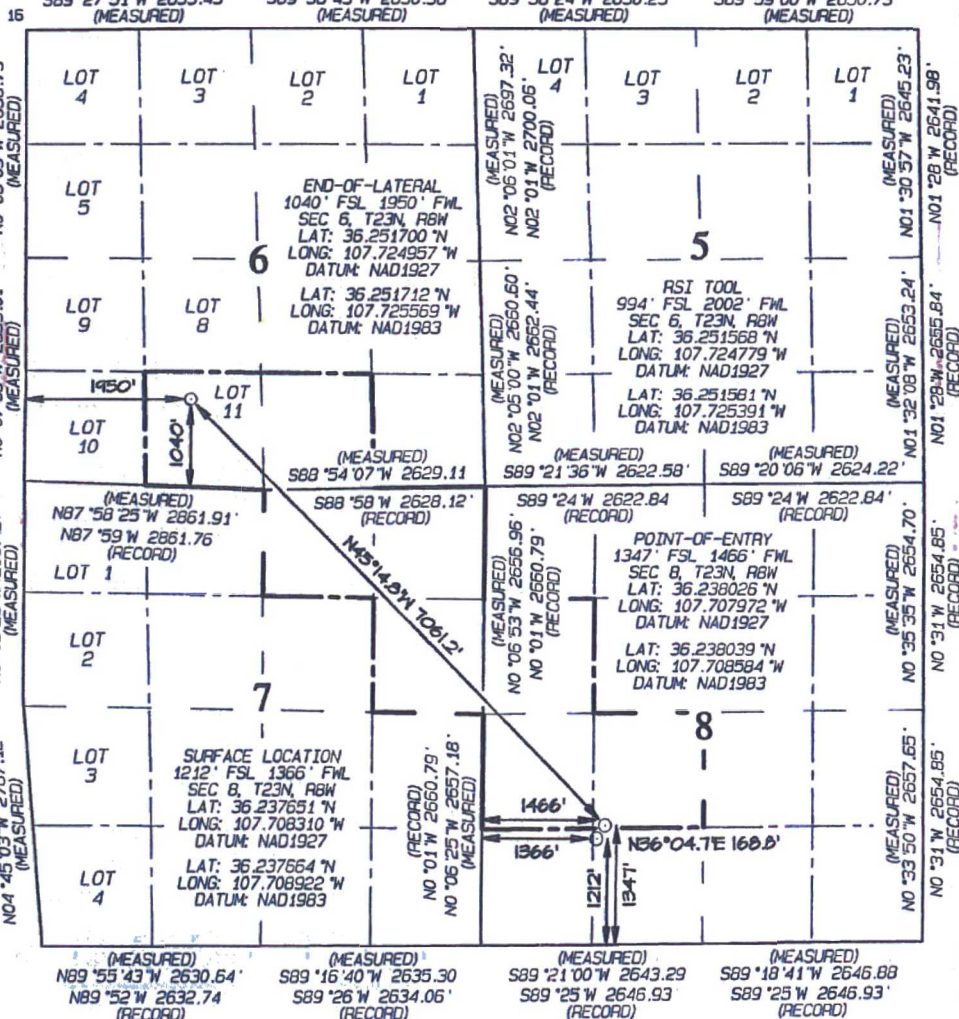
¹³ Joint or Infill

¹⁴ Consolidation Code

¹⁵ Order No.

R-14051 - 12,807.24 Acres

NO ALLOWABLE WILL BE ASSIGNED
TO THIS COMPLETION UNTIL ALL
INTERESTS HAVE BEEN CONSOLIDATED
OR A NON-STANDARD UNIT HAS
BEEN APPROVED BY THE DIVISION



¹⁷ OPERATOR CERTIFICATION
I hereby certify that the information contained herein is true and complete to the best of my knowledge and belief, and that this organization either owns a working interest or unleased mineral interest in the land including the proposed bottom-hole location or has a right to drill this well at this location pursuant to a contract with an owner of such a mineral or working interest or to a voluntary pooling agreement or a compulsory pooling order heretofore entered by the division.

Signature: *[Signature]* Date: 3/6/11
Printed Name: *[Name]*
E-mail Address: *[Email]*

¹⁸ SURVEYOR CERTIFICATION

I hereby certify that the well location shown on this plat was plotted from field notes of actual surveys made by me or under my supervision, and that the same is true and correct to the best of my belief.

Date Revised: FEBRUARY 20, 2017
Survey Date: DECEMBER 19, 2014

Signature and Seal of Professional Surveyor



JASON C. EDWARDS
Certificate Number 15269

District I
1625 N. French Drive, Hobbs, NM 88240
Phone: (575) 393-6161 Fax: (575) 393-0720

District II
811 S. First Street, Artesia, NM 88210
Phone: (575) 748-1283 Fax: (575) 748-9720

District III
1000 Rio Brazos Road, Aztec, NM 87410
Phone: (505) 334-6178 Fax: (505) 334-6170

District IV
1220 S. St. Francis Drive, Santa Fe, NM 87505
Phone: (505) 476-3460 Fax: (505) 476-3462

State of New Mexico
Energy, Minerals & Natural Resources Department

Form C-102
Revised August 1, 2011

Submit one copy to
Appropriate District Office

OIL CONSERVATION DIVISION
1220 South St. Francis Drive
Santa Fe, NM 87505

☐ AMENDED REPORT

As - Drilled

WELL LOCATION AND ACREAGE DEDICATION PLAT

*API Number 30-045-35728		*Pool Code 98157	*Pool Name LYBROOK MANCOS W
*Property Code 315250	*Property Name W LYBROOK UNIT		*Well Number 704H
*GRID No. 120782	*Operator Name WPX ENERGY PRODUCTION, LLC		*Elevation 6823'

¹⁰ Surface Location

UL or lot no.	Section	Township	Range	Lot Idn	Feet from the	North/South line	Feet from the	East/West line	County
M	8	23N	8W		1199	SOUTH	1287	WEST	SAN JUAN

¹¹ Bottom Hole Location If Different From Surface

UL or lot no.	Section	Township	Range	Lot Idn	Feet from the	North/South line	Feet from the	East/West line	County
I	17	23N	8W		1579	SOUTH	335	EAST	SAN JUAN

¹² Dedicated Acres SW/4 SW/4 (Section 8) 280.0 N/2 NW/4, SE/4 NW/4 SW/4 NE/4, N/2 SE/4 (Section 17)	¹³ Joint or Infill	¹⁴ Consolidation Code	¹⁵ Order No. R-14051 - 12,807.24 Acres
--	-------------------------------	----------------------------------	--

NO ALLOWABLE WILL BE ASSIGNED
TO THIS COMPLETION UNTIL ALL
INTERESTS HAVE BEEN CONSOLIDATED
OR A NON-STANDARD UNIT HAS
BEEN APPROVED BY THE DIVISION

SURFACE LOCATION
1199' FSL 1287' FWL
SECTION 8, T23N, R8W
LAT: 36.237612° N
LONG: 107.708576° W
DATUM: NAD1927

LAT: 36.237625° N
LONG: 107.709189° W
DATUM: NAD1983

POINT-OF-ENTRY
491' FSL 712' FWL
SECTION 8, T23N, R8W
LAT: 36.235653° N
LONG: 107.710526° W
DATUM: NAD1927

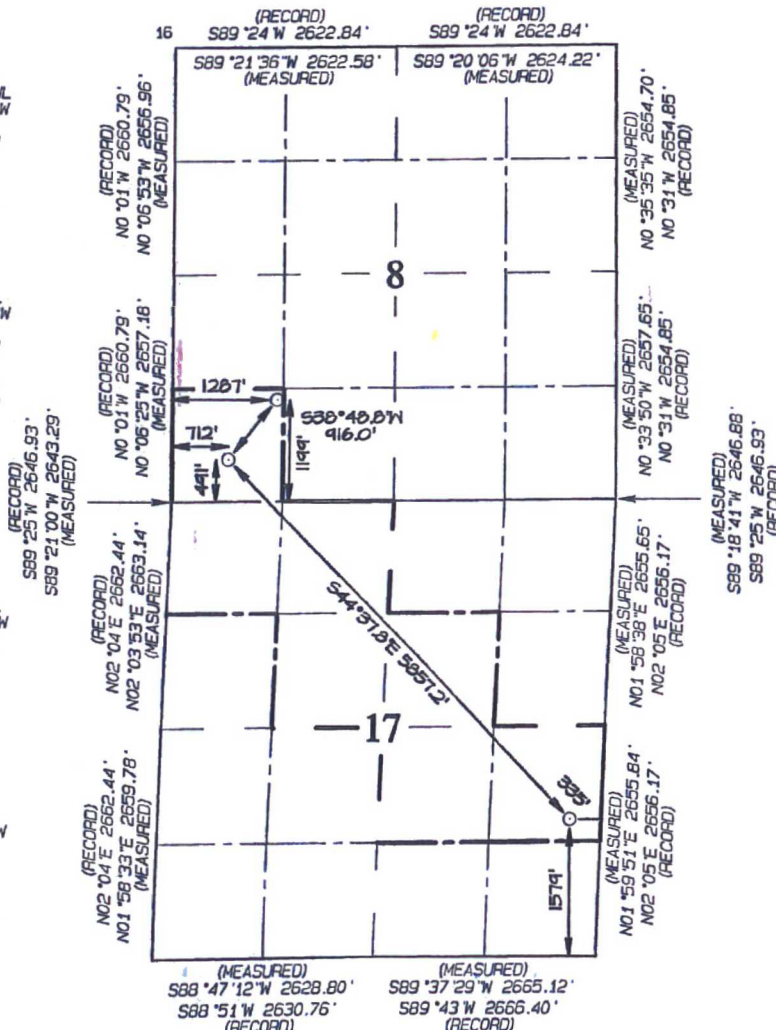
LAT: 36.235666° N
LONG: 107.711139° W
DATUM: NAD1983

RSI TOOL
1635' FSL 393' FEL
SECTION 17, T23N, R8W
LAT: 36.224340° N
LONG: 107.696784° W
DATUM: NAD1927

LAT: 36.224353° N
LONG: 107.697395° W
DATUM: NAD1983

END-OF-LATERAL
1579' FSL 335' FEL
SECTION 17, T23N, R8W
LAT: 36.224187° N
LONG: 107.696594° W
DATUM: NAD1927

LAT: 36.224201° N
LONG: 107.697205° W
DATUM: NAD1983



¹⁷ OPERATOR CERTIFICATION

I hereby certify that the information contained herein is true and complete to the best of my knowledge and belief, and that this organization either owns a working interest or unleased mineral interest in the land including the proposed bottom-hole location or has a right to drill this well at this location pursuant to a contract with an owner of such a mineral or working interest, or to a voluntary pooling agreement, or a compulsory pooling order heretofore entered by the division.

Signature: *Jason C. Edwards* Date: 3-6-17
Printed Name: Jason C. Edwards
E-mail Address: jason.edwards@wpenergy.com

¹⁸ SURVEYOR CERTIFICATION

I hereby certify that the well location shown on this plat was plotted from field notes of actual surveys made by me or under my supervision, and that the same is true and correct to the best of my belief.

Date Revised: JANUARY 17, 2017
Survey Date: DECEMBER 19, 2014

Signature and Seal of Professional Surveyor



JASON C. EDWARDS

Certificate Number 15269

District I
1625 N. French Drive, Hobbs, NM 88240
Phone: (575) 393-6161 Fax: (575) 393-0720

District II
811 S. First Street, Artesia, NM 88210
Phone: (575) 748-1283 Fax: (575) 748-9720

District III
1000 Rio Brazos Road, Aztec, NM 87410
Phone: (505) 334-6178 Fax: (505) 334-6170

District IV
1220 S. St. Francis Drive, Santa Fe, NM 87505
Phone: (505) 476-3460 Fax: (505) 476-3462

State of New Mexico
Energy, Minerals & Natural Resources Department

Form C-102
Revised August 1, 2011
Submit one copy to
Appropriate District Office

OIL CONSERVATION DIVISION
1220 South St. Francis Drive
Santa Fe, NM 87505

☐ AMENDED REPORT

As - Drilled

WELL LOCATION AND ACREAGE DEDICATION PLAT

*API Number 30-045-35809		*Pool Code 98157	*Pool Name LYBROOK MANCOS W
*Property Code 315250	*Property Name W LYBROOK UNIT		*Well Number 711H
*GRID No. 120782	*Operator Name WPX ENERGY PRODUCTION, LLC		*Elevation 6823'

¹⁰ Surface Location

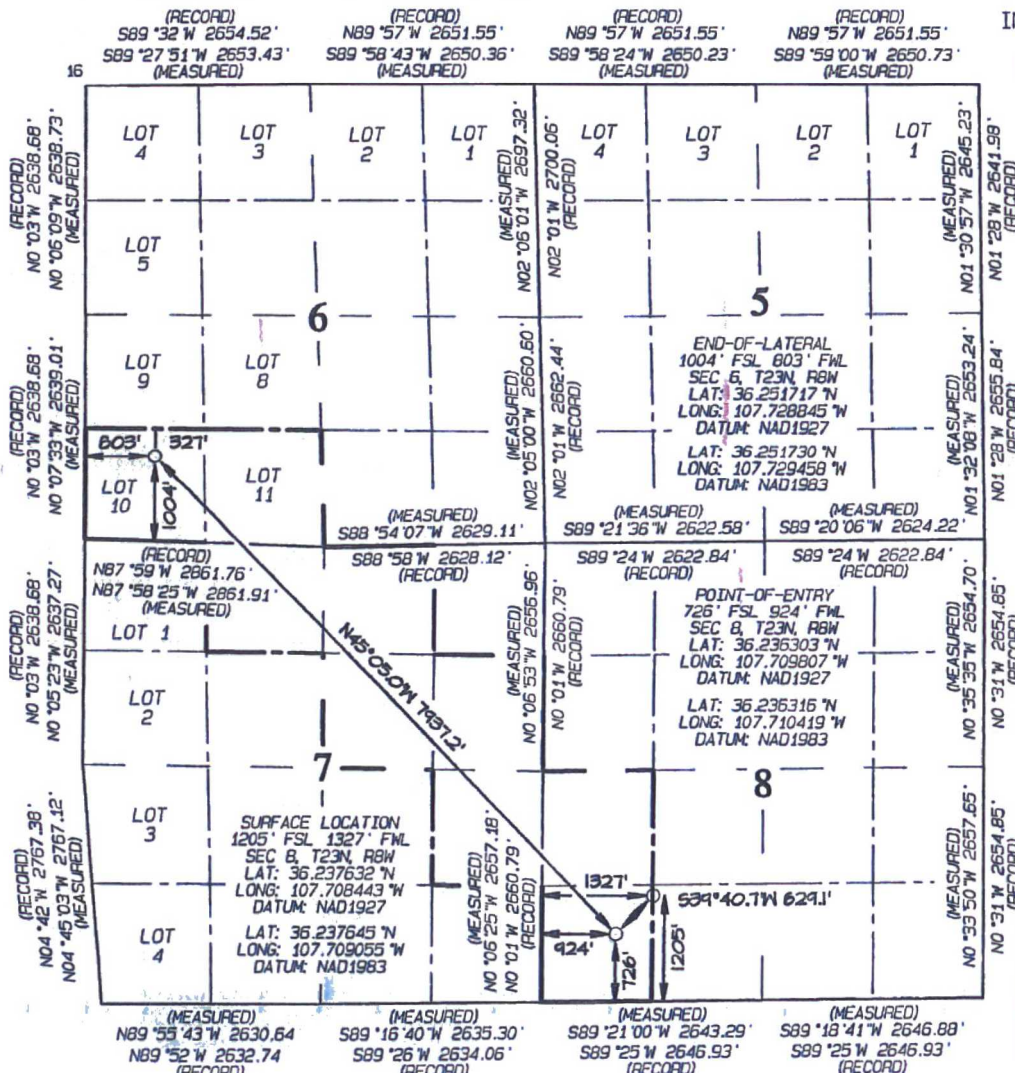
UL or lot no.	Section	Township	Range	Lot Idn	Feet from the	North/South line	Feet from the	East/West line	County
N	8	23N	8W		1205	SOUTH	1327	WEST	SAN JUAN

¹¹ Bottom Hole Location If Different From Surface

UL or lot no.	Section	Township	Range	Lot Idn	Feet from the	North/South line	Feet from the	East/West line	County
M	6	23N	8W	10	1004	SOUTH	803	WEST	SAN JUAN

¹² Dedicated Acres 367.16		S/2 SW/4 - Section 6 NE/4 NW/4, NW/4 NE/4 S/2 NE/4, NE/4 SE/4 - Section 7 W/2 SW/4 - Section 8	¹³ Joint or Infill	¹⁴ Consolidation Code	¹⁵ Order No. R-14051 - 12,807.24 Acres
---	--	---	-------------------------------	----------------------------------	--

NO ALLOWABLE WILL BE ASSIGNED
TO THIS COMPLETION UNTIL ALL
INTERESTS HAVE BEEN CONSOLIDATED
OR A NON-STANDARD UNIT HAS
BEEN APPROVED BY THE DIVISION



¹⁷ OPERATOR CERTIFICATION

I hereby certify that the information contained herein is true and complete to the best of my knowledge and belief, and that this organization either owns a working interest or unleased mineral interest in the land including the proposed bottom-hole location or has a right to drill this well at this location pursuant to a contract with an owner of such a mineral or working interest or to a voluntary pooling agreement or a compulsory pooling order hereafter approved by the division.

Signature: *[Signature]* Date: 3/6/17
Printed Name: *[Name]*
E-mail Address: *[Email]*

¹⁸ SURVEYOR CERTIFICATION

I hereby certify that the well location shown on this plat was plotted from field notes of actual surveys made by me or under my supervision, and that the same is true and correct to the best of my belief.

Date Revised: FEBRUARY 1, 2017
Survey Date: OCTOBER 24, 2016

Signature and Seal of Professional Surveyor



JASON C. EDWARDS
Certificate Number 15269

Submit one copy to
Appropriate District Office

OIL CONSERVATION DIVISION

1220 South St. Francis Drive
Santa Fe, NM 87505

☐ AMENDED REPORT

As - Drilled

WELL LOCATION AND ACREAGE DEDICATION PLAT

*API Number 30-045-35808	*Pool Code 98157	*Pool Name LYBROOK MANCOS W
*Property Code 315250	*Property Name W LYBROOK UNIT	*Well Number 713H
*OGRID No. 120782	*Operator Name WPX ENERGY PRODUCTION, LLC	*Elevation 6823'

¹⁰ Surface Location

UL or lot no.	Section	Township	Range	Lot Idn	Feet from the	North/South line	Feet from the	East/West line	County
N	8	23N	8W		1215	SOUTH	1386	WEST	SAN JUAN

11 Bottom Hole Location If Different From Surface

UL or lot no.	Section	Township	Range	Lot Id	Feet from the	North/South line	Feet from the	East/West line	County
0	6	23N	8W		1059	SOUTH	2379	EAST	SAN JUAN

280.00 SW/4 SE/4 - Section 6 N/2 NE/4, SE/4 NE/4 - Section 7 N/2 SW/4, SW/4 NW/4 - Section 8	13 Joint or Infill	14 Consolidation Code	15 Order No. R-14051 - 12,807.24 Acres
NO ALLOWABLE WILL BE ASSIGNED			

NO ALLOWABLE WILL BE ASSIGNED
TO THIS COMPLETION UNTIL ALL
INTERESTS HAVE BEEN CONSOLIDATED
OR A NON-STANDARD UNIT HAS
BEEN APPROVED BY THE DIVISION

[illegible]

17 OPERATOR CERTIFICATION

I hereby certify that the information contained herein is true and complete to the best of my knowledge and belief, and that this organization either owns a working interest or unleased mineral interest in the land including the proposed bottom-hole location or has a right to drill this well at this location pursuant to a contract with an owner of such a mineral or working interest. I hereby certify that no pooling agreement or compulsory pooling order has been entered into by this division.

Signature _____ Date 3-6-17
Printed Name _____
Email Address _____

18 SURVEYOR CERTIFICATION

I hereby certify that the well location shown on this plat was plotted from field notes of actual surveys made by me or under my supervision, and that the same is true and correct to the best of my belief.

Date Revised: FEBRUARY 24, 2017
Survey Date: OCTOBER 24, 2016

Signature and Seal of Professional Surveyor



JASON C. EDWARDS

Certificate Number 15269

District I
1625 N. French Drive, Hobbs, NM 88240
Phone: (575) 393-6161 Fax: (575) 393-0720

District II
811 S. First Street, Artesia, NM 88210
Phone: (575) 748-1283 Fax: (575) 748-9720

District III
1000 Rio Brazos Road, Aztec, NM 87410
Phone: (505) 334-6178 Fax: (505) 334-6170

District IV
1220 S. St. Francis Drive, Santa Fe, NM 87505
Phone: (505) 476-3460 Fax: (505) 476-3462

State of New Mexico
Energy, Minerals & Natural Resources Department

Form C-102
Revised August 1, 2011

Submit one copy to
Appropriate District Office

OIL CONSERVATION DIVISION

1220 South St. Francis Drive
Santa Fe, NM 87505

☐ AMENDED REPORT

As-Drilled

WELL LOCATION AND ACREAGE DEDICATION PLAT

*API Number 30-045-35729	*Pool Code 98157	*Pool Name LYBROOK MANCOS W
*Property Code 315250	*Property Name W LYBROOK UNIT	*Well Number 743H
*GRID No. 120782	*Operator Name WPX ENERGY PRODUCTION, LLC	*Elevation 6823'

¹⁰ Surface Location

UL or lot no.	Section	Township	Range	Lot Idn	Feet from the	North/South line	Feet from the	East/West line	County
N	8	23N	8W		1209	SOUTH	1346	WEST	SAN JUAN

¹¹ Bottom Hole Location If Different From Surface

UL or lot no.	Section	Township	Range	Lot Idn	Feet from the	North/South line	Feet from the	East/West line	County
A	17	23N	8W		940	NORTH	335	EAST	SAN JUAN

¹² Dedicated Acres 200.00	NE/4 SW/4, W/2 SE/4 SE/4 SE/4 - Section 8 NE/4 NE/4 - Section 17	¹³ Joint or Infill	¹⁴ Consolidation Code	¹⁵ Order No. R-14051 - 12,807.24 Acres
---	--	-------------------------------	----------------------------------	--

NO ALLOWABLE WILL BE ASSIGNED
TO THIS COMPLETION UNTIL ALL
INTERESTS HAVE BEEN CONSOLIDATED
OR A NON-STANDARD UNIT HAS
BEEN APPROVED BY THE DIVISION

POINT-OF-ENTRY
1921' FSL 2088' FNL
SECTION 8, T23N, R8W
LAT: 36.239619° N
LONG: 107.705862° W
DATUM: NAD1927

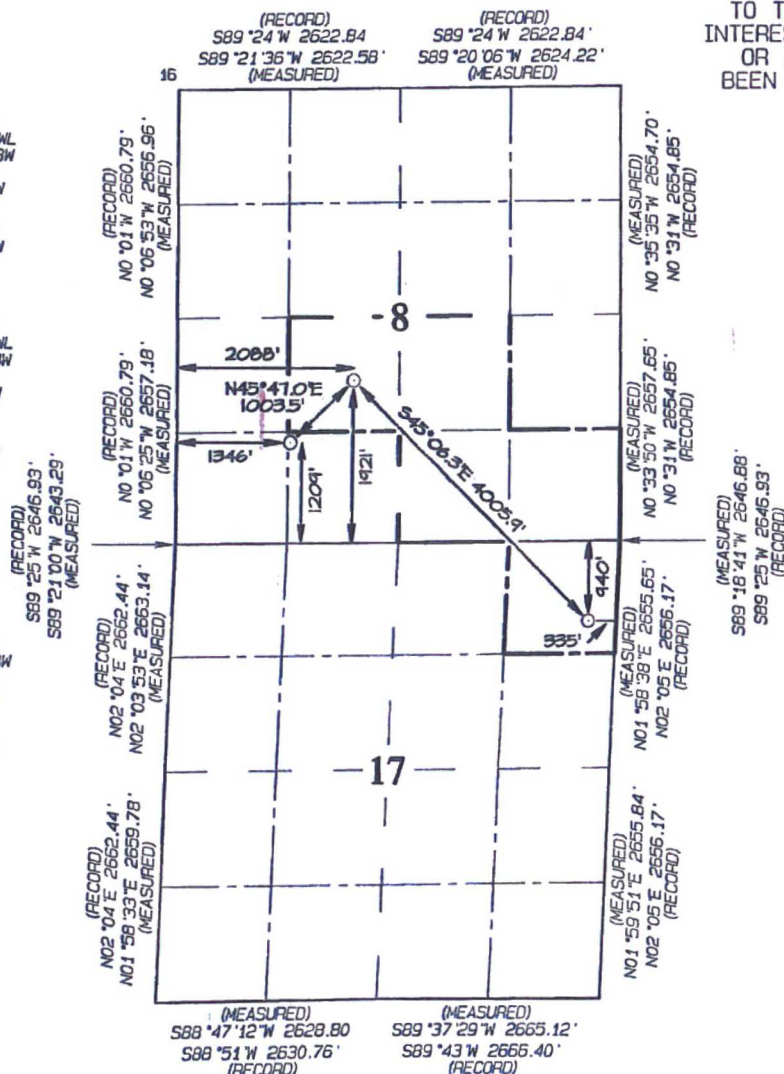
LAT: 36.239632° N
LONG: 107.706474° W
DATUM: NAD1983

SURFACE LOCATION
1209' FSL 1346' FNL
SECTION 8, T23N, R8W
LAT: 36.237641° N
LONG: 107.708376° W
DATUM: NAD1927

LAT: 36.237654° N
LONG: 107.708988° W
DATUM: NAD1983

END-OF-LATERAL
940' FNL 335' FEL
SECTION 17, T23N, R8W
LAT: 36.231841° N
LONG: 107.696252° W
DATUM: NAD1927

LAT: 36.231854° N
LONG: 107.696864° W
DATUM: NAD1983



¹⁷ OPERATOR CERTIFICATION

I hereby certify that the information contained herein is true and complete to the best of my knowledge and belief, and that this organization either owns a working interest or unleased mineral interest in the land including the proposed bottom-hole location or has a right to drill this well at this location pursuant to a contract with an owner of such a mineral or working interest or to a voluntary pooling agreement or a compulsory pooling order heretofore entered by the division.

Signature: *[Signature]* Date: 3-6-17
Printed Name: *[Name]*
E-mail Address: *[Email]*

¹⁸ SURVEYOR CERTIFICATION

I hereby certify that the well location shown on this plat was plotted from field notes of actual surveys made by me or under my supervision, and that the same is true and correct to the best of my belief.

Date Revised: FEBRUARY 8, 2017
Date of Survey: MAY 20, 2015

Signature and Seal of Professional Surveyor

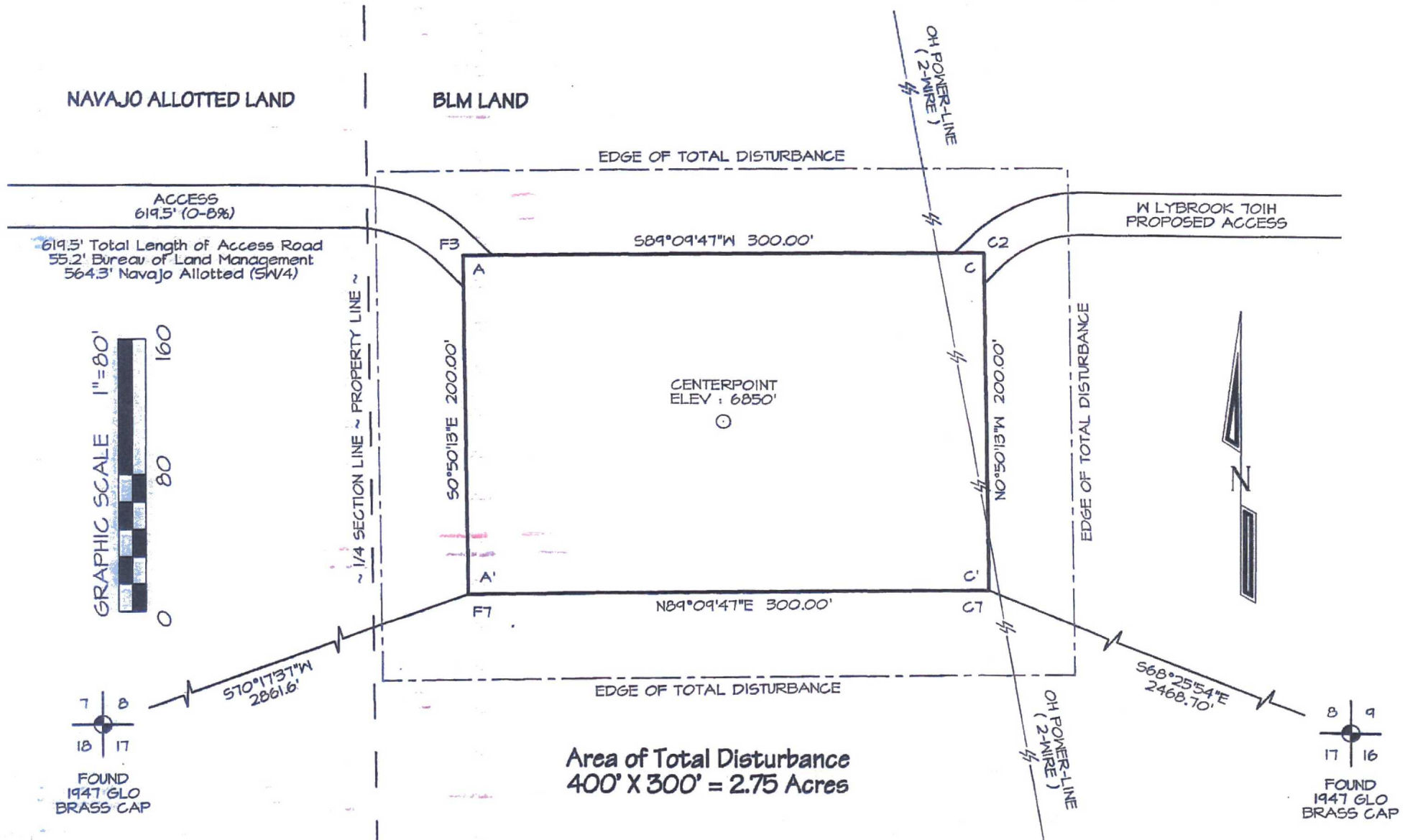


JASON C. EDWARDS

Certificate Number 15269

Certificate Number 15269

WPX ENERGY PRODUCTION, LLC WLU REMOTE #1
1035' FSL, 2440' FEL, SECTION 8, T23N, R8W
SAN JUAN COUNTY, NEW MEXICO ELEVATION: 6850'
LAT: 36.237220°N LONG: 107.703915°W DATUM: NAD1983



Steel T-Posts have been set to define the Edge of Disturbance limits which are 50' offset from the edge of the staked fracturing site.

**WPX Energy Production, LLC
WLU Remote #1
(Remote Facilities Pad 23-8-80)
Facilities/LACT Equipment Diagram
W Lybrook UT 701H, 702H, 703H, 704H, 711H, 713H, 743H & 744H
Section 8, T23N, R8W, NMPM
San Juan County, New Mexico**

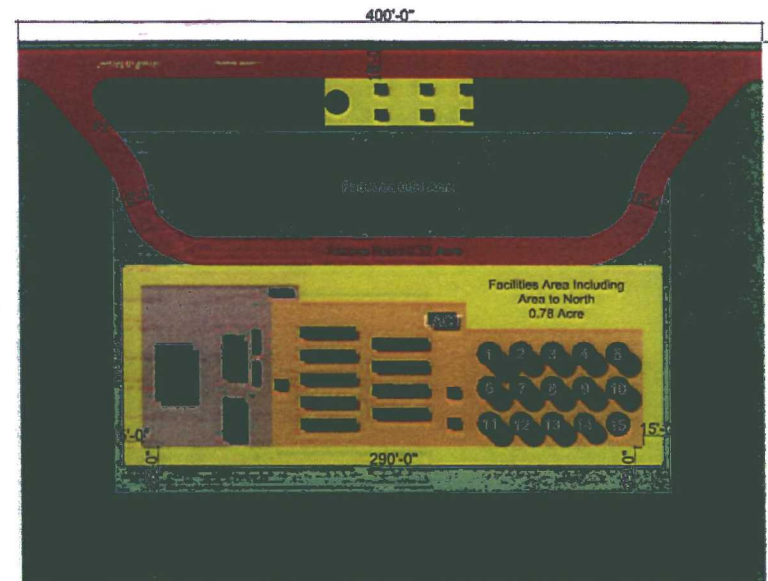
W Lybrook UT 701H
API # 30-045-35725
Lease # NMNM135216A

W Lybrook UT 702H
API # 30-045-35726
Lease # NMNM135216A

W Lybrook UT 703H
API # 30-045-35727
Lease # NMNM135216A

W Lybrook UT 704H
API # 30-045-35728
Lease # NMNM135216A

W Lybrook UT 711H
API # 30-045-35809
Lease # NMNM135216A



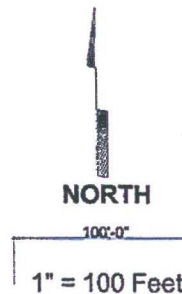
W Lybrook UT 713H
API # 30-045-35808
Lease # NMNM135216A

W Lybrook UT 743H
API # 30-045-35729
Lease # NMNM135216A

W Lybrook UT 744H
API # 30-045-35730
Lease # NMNM135216A

- 1) Long Term Disturbance = 1.1 Acres
 - a. Facilities = 0.78 Acre
 - b. Access Road = 0.32 Acre
- 3) Reseed & Recontour Area = 1.65 Acres
 - a. Pad Area = 0.51 Acre
 - b. Edge of Disturbance = 1.14 Acres

Total Disturbance Area = 2.75 Acres



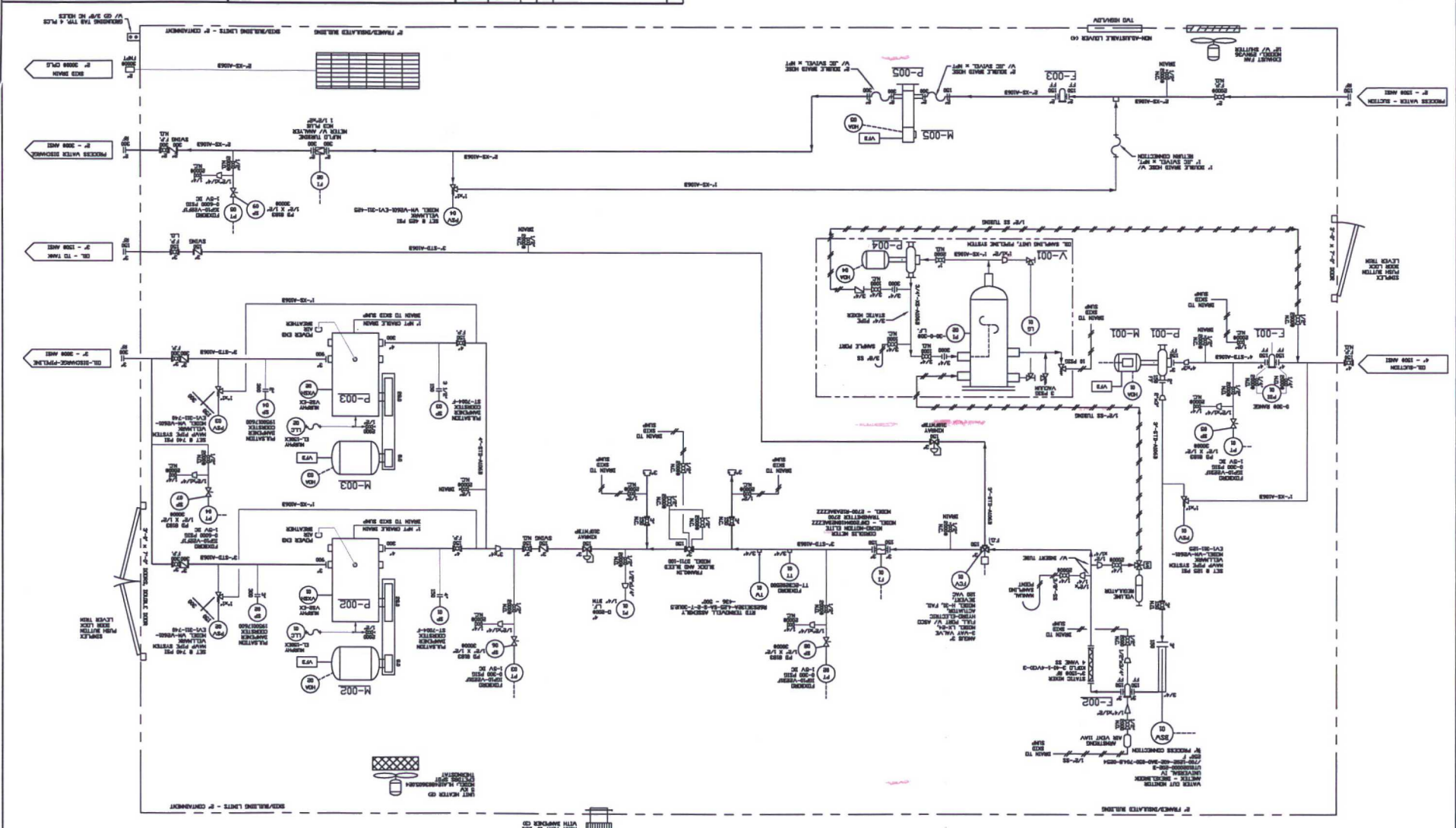
1	Flash Tank 750 Bbl
2	Oil Tank 500 Bbl
3	Oil Tank 500 Bbl
4	Oil Tank 500 Bbl
5	Oil Tank 500 Bbl
6	Flash Tank 750 Bbl
7	Oil Tank 500 Bbl
8	Oil Tank 500 Bbl
9	Oil Tank 500 Bbl
10	Oil Tank 500 Bbl
11	Oil Tank 500 Bbl
12	Oil Tank 500 Bbl
13	Water 500 Bbl
14	Water 500 Bbl
15	BGT

1. DESIGN FLOW RATE: 100 - 2000 GPM/24 HRS.
 2. DESIGN FLOW RATE: 100 - 2000 GPM/24 HRS.
 3. ALL PIPING SYSTEMS TO BE INSTALLED IN ACCORDANCE WITH THE LATEST EDITIONS OF THE A.S.T.M. AND A.S.T.M. STANDARDS.

REV.	DATE	DESCRIPTION
1	01/01/01	ISSUED FOR CONSTRUCTION

PROJECT	WFX TRANSFER LACT UNIT
DRAWING NO.	2455-01
SCALE	AS SHOWN
DATE	01/01/01
DESIGNED BY	WFX
CHECKED BY	WFX
APPROVED BY	WFX

PROJECT	WFX TRANSFER LACT UNIT
DRAWING NO.	2455-01
SCALE	AS SHOWN
DATE	01/01/01
DESIGNED BY	WFX
CHECKED BY	WFX
APPROVED BY	WFX



P-001	MODEL: 100-2000 GPM/24 HRS. FLOW RATE. 100-2000 GPM/24 HRS. FLOW RATE. 100-2000 GPM/24 HRS. FLOW RATE.
P-002	MODEL: 100-2000 GPM/24 HRS. FLOW RATE. 100-2000 GPM/24 HRS. FLOW RATE. 100-2000 GPM/24 HRS. FLOW RATE.
P-003	MODEL: 100-2000 GPM/24 HRS. FLOW RATE. 100-2000 GPM/24 HRS. FLOW RATE. 100-2000 GPM/24 HRS. FLOW RATE.
P-004	MODEL: 100-2000 GPM/24 HRS. FLOW RATE. 100-2000 GPM/24 HRS. FLOW RATE. 100-2000 GPM/24 HRS. FLOW RATE.
P-005	MODEL: 100-2000 GPM/24 HRS. FLOW RATE. 100-2000 GPM/24 HRS. FLOW RATE. 100-2000 GPM/24 HRS. FLOW RATE.
M-001	MODEL: 100-2000 GPM/24 HRS. FLOW RATE. 100-2000 GPM/24 HRS. FLOW RATE. 100-2000 GPM/24 HRS. FLOW RATE.
M-002	MODEL: 100-2000 GPM/24 HRS. FLOW RATE. 100-2000 GPM/24 HRS. FLOW RATE. 100-2000 GPM/24 HRS. FLOW RATE.
M-003	MODEL: 100-2000 GPM/24 HRS. FLOW RATE. 100-2000 GPM/24 HRS. FLOW RATE. 100-2000 GPM/24 HRS. FLOW RATE.
M-004	MODEL: 100-2000 GPM/24 HRS. FLOW RATE. 100-2000 GPM/24 HRS. FLOW RATE. 100-2000 GPM/24 HRS. FLOW RATE.
M-005	MODEL: 100-2000 GPM/24 HRS. FLOW RATE. 100-2000 GPM/24 HRS. FLOW RATE. 100-2000 GPM/24 HRS. FLOW RATE.

Felix, Andrea

From: Ernie Johnson <ernie.johnson@whiptailmidstream.com>
Sent: Tuesday, June 07, 2016 2:15 PM
To: Felix, Andrea
Cc: Bob O'Neal; Andy Pickle; Jude Dysart
Subject: Whiptail Midstream, LLC APPROVED Utilization of LACT Units

Andrea,

Whiptail Midstream, LLC agrees with the plan of allowing WPX Energy Production, LLC to utilize LACT units as the sales point on our pipeline system for the below listed facilities as long as, these LACT units will be proved per regulatory requirements.

- WLU Remote #1

If you have any questions please feel free to contact me.

Thank you,

Ernie Johnson

HSE Manager

Whiptail Midstream

O: (918) 289-2147

C: (918) 949-7580

ernie.johnson@whiptailmidstream.com

WHIPTAIL MIDSTREAM



Casey Haga

From: Ernie Johnson <ernie.johnson@whiptailmidstream.com>
Sent: Monday, March 27, 2017 1:00 PM
To: Felix, Andrea
Cc: Jude Dysart; Bob O'Neal; caseyhaga@eis-llc.com; VanDenBerg, Randy
Subject: RE: [EXTERNAL] Whiptail letter for WPX Remote 2

Andrea,

Thank you for the update. As the manager of EHS, and Regulatory & Permitting, for Whiptail Midstream, LLC, Whiptail Midstream agrees with the plan of allowing WPX Energy Production, LLC to utilize LACT units as the sales point on our pipeline system for the below listed facilities. So long as these LACT units will be proved per regulatory requirements.

WLU REMOTE #1 PIPELINE LACT UNIT

WELLS TO BE SERVED BY PIPELINE LACT UNIT:

- W Lybrook Unit 701H / API #30-045-35725 / UNIT M (SW/SW) Sec. 9, T23N, R8W, NMPPM
- W Lybrook Unit 702H / API #30-045-35726 / UNIT M (SW/SW) Sec. 9, T23N, R8W, NMPPM
- W Lybrook Unit 703H / API #30-045-35727 / UNIT N (SE/SW) Sec. 8, T23N, R8W, NMPPM
- W Lybrook Unit 704H / API #30-045-35728 / UNIT M (SW/SW) Sec. 8, T23N, R8W, NMPPM
- W Lybrook Unit 711H / API #30-045-35809 / UNIT N (SE/SW) Sec. 8, T23N, R8W, NMPPM
- W Lybrook Unit 713H / API #30-045-35808 / UNIT N (SE/SW) Sec. 8, T23N, R8W, NMPPM
- W Lybrook Unit 743H / API #30-045-35729 / UNIT N (SE/SW) Sec. 8, T23N, R8W, NMPPM
- W Lybrook Unit 744H / API #30-045-35730 / UNIT M (SW/SW) Sec. 8, T23N, R8W, NMPPM

WLU REMOTE #2 PIPELINE LACT UNIT

WELLS TO BE SERVED BY PIPELINE LACT UNIT:

- W Lybrook Unit 705H / API #30-045-35748 / UNIT O (SW/SE) Sec. 7, T23N, R8W, NMPPM
- W Lybrook Unit 706H / API #30-045-35749 / UNIT O (SW/SE) Sec. 7, T23N, R8W, NMPPM
- W Lybrook Unit 707H / API #30-045-35739 / UNIT P (SE/SE) Sec. 12, T23N, R9W, NMPPM
- W Lybrook Unit 708H / API #30-045-35740 / UNIT P (SE/SE) Sec. 12, T23N, R9W, NMPPM
- W Lybrook Unit 709H / API #30-045-35741 / UNIT P (SE/SE) Sec. 12, T23N, R9W, NMPPM
- W Lybrook Unit 745H / API #30-045-35750 / UNIT O (SW/SE) Sec. 7, T23N, R8W, NMPPM
- W Lybrook Unit 746H / API #30-045-35751 / UNIT O (SW/SE) Sec. 7, T23N, R8W, NMPPM
- W Lybrook Unit 747H / API #30-045-35742 / UNIT P (SE/SE) Sec. 12, T23N, R9W, NMPPM
- W Lybrook Unit 748H / API #30-045-35743 / UNIT P (SE/SE) Sec. 12, T23N, R9W, NMPPM
- W Lybrook Unit 749H / API #30-045-35744 / UNIT P (SE/SE) Sec. 12, T23N, R9W, NMPPM

If you have any questions please feel free to contact me.

Thank you,

Ernie Johnson
HSE Manager
Whiptail Midstream
15 W. 6th Street, Suite 2901, Tulsa, OK 74119
W: 918.289.2147
ernie.johnson@whiptailmidstream.com

OIL CONS. DIV DIST. 3

MAR 28 2017