

District I (575) 393-6161
1625 N. French Dr., Hobbs, NM 88240
District II (575) 748-1283
811 S. First St., Artesia, NM 88210
District III (505) 334-6178
1000 Rio Brazos Road, Aztec, NM 87410
District IV (505) 827-8198
1220 S. St. Francis Dr., Santa Fe, NM 87505

State of New Mexico
Energy Minerals and Natural Resources

Oil Conservation Division
1220 South St. Francis Dr.
Santa Fe, NM 87505

Form C-106
Revised August 1, 2011

ACT Permit No.

3-24

NOTICE OF INTENTION TO UTILIZE AUTOMATIC CUSTODY TRANSFER EQUIPMENT

Operator WPX Energy Production, LLC

Address 721 S. Main, Aztec, NM 87410 County San Juan

Lease(s) to be served by this ACT Unit: NMNM-135216A (W Lybrook Unit)

Pool(s) to be served by this ACT Unit Lybrook Mancos W (98157)

Location of ACT System: Unit D Section 18 Township 23N Range 8W

Order No. authorizing commingling between leases if more than one lease is to be served by this system.

R-14051

Date 09/08/2015

Order No. authorizing commingling between pools if more than one pool is to be served by this system

N/A

Date

N/A

Authorized transporter of oil from this system Whiptail Midstream, LLC

OIL CONS. DIV DIST. 3

Transporter's address 15 West 6th Street, Tulsa, OK 74119

MAR 10 2017

Maximum expected daily through-put for this system: 8,000 BBL/Day

If system fails to transfer oil due to malfunction or otherwise, waste by overflow will be averted by:

CHECK ONE: A. ☐ Automatic shut-down facilities B. ☒ Providing adequate available capacity to receive production
as required by 19.15.18.15.C(8) NMAC during maximum unattended time of lease operation
19.15.18.15.C(9) NMAC

If "A" above is checked, will flowing wells be shut-in at the header manifold or at the wellhead?

Maximum well-head shut-in pressure _____

If "B" above is checked, how much storage capacity is available above the normal high working level of the

surge tank 650 BBLs.

What is the normal maximum unattended time of lease operation? Sixteen (16) Hours.

What device will be used for measuring oil in this ACT unit?

CHECK ONE: ☐ Positive displacement meter ☐ Weir-type measuring vessel
☐ Positive volume metering chamber ☒ Other; describe Coriolis Meter

Remarks: This LACT will be selling to pipeline.

OPERATOR:

I hereby certify above information is true and complete to best of my knowledge and subject ACT system will be installed and operated in accordance with Rule 19.15.18.15 NMAC. Approval of this Form C-106 does not eliminate necessity of an approved C-104 prior to running any oil or gas from this system.

Signature [Signature]

Printed Name & Title Robert Jordan, Production Superintendent

E-mail Address robert.jordan@wpxenergy.com

Date _____ Telephone (505) 333-1850

OIL CONSERVATION DIVISION

Approved by: [Signature]

Title: Deputy Oil & Gas Inspector,
District #3

Date: 3/28/17

INSTRUCTIONS: Submit one copy of Form C-106 with following attachments to appropriate district office.

- 1) Lease plat showing all wells which will be produced in ACT system.
- 2) Schematic diagram of battery and ACT equipment showing all major components and means employed to prove accuracy of measuring device.
- 3) Letter from transporter agreeing to utilization of ACT system as shown on schematic diagram.

**NOTICE OF INTENTION TO UTILIZE AUTOMATIC CUSTODY TRANSFER EQUIPMENT
WLU REMOTE #2 PIPELINE LACT UNIT**

WELLS TO BE SERVED BY PIPELINE LACT UNIT:

- W Lybrook Unit 705H / API #30-045-35748 / UNIT O (SW/SE) Sec. 7, T23N, R8W, NMPM
- W Lybrook Unit 706H / API #30-045-35749 / UNIT O (SW/SE) Sec. 7, T23N, R8W, NMPM
- W Lybrook Unit 707H / API #30-045-35739 / UNIT P (SE/SE) Sec. 12, T23N, R9W, NMPM
- W Lybrook Unit 708H / API #30-045-35740 / UNIT P (SE/SE) Sec. 12, T23N, R9W, NMPM
- W Lybrook Unit 709H / API #30-045-35741 / UNIT P (SE/SE) Sec. 12, T23N, R9W, NMPM
- W Lybrook Unit 745H / API #30-045-35750 / UNIT O (SW/SE) Sec. 7, T23N, R8W, NMPM
- W Lybrook Unit 746H / API #30-045-35751 / UNIT O (SW/SE) Sec. 7, T23N, R8W, NMPM
- W Lybrook Unit 747H / API #30-045-35742 / UNIT P (SE/SE) Sec. 12, T23N, R9W, NMPM
- W Lybrook Unit 748H / API #30-045-35743 / UNIT P (SE/SE) Sec. 12, T23N, R9W, NMPM
- W Lybrook Unit 749H / API #30-045-35744 / UNIT P (SE/SE) Sec. 12, T23N, R9W, NMPM

19.15.18.15 AUTOMATIC CUSTODY TRANSFER EQUIPMENT:

A. Oil shall be received and measured in facilities of an approved design. The facilities shall permit the testing of each well at reasonable intervals and may be comprised of manually gauged, closed stock tanks for which the operator of the ACT system has prepared proper strapping tables, or of ACT equipment. The division shall permit ACT equipment's use only after the operator complies with the following. The operator shall file with the division form C-106 and receive approval for use of the ACT equipment prior to transferring oil through the ACT system. The carrier shall not accept delivery of oil through the ACT system until the division has approved form C-106.

- *Summary is attached to Form C-106 Notice of Intent to Utilize Automatic Custody Transfer Equipment*

B. The operator of the ACT system shall submit form C-106 to the appropriate division district office, which is accompanied by the following:

- (1) plat of the lease showing all wells that the any well operator will produce into the ACT system;
 - *Attached as part of Form C-106 Notice of Intent*
- (2) schematic diagram of the ACT equipment, showing on the diagram all major components such as surge tanks and their capacity, extra storage tanks and their capacity, transfer pumps, monitors, reroute valves, treaters, samplers, strainers, air and gas eliminators, back pressure valves and metering devices (indicating type and capacity, *i.e.* whether automatic measuring tank, positive volume metering chamber, weir-type measuring vessel or positive displacement meter); the schematic diagram shall also show means employed to prove the measuring device's accuracy; and
 - *Attached as part of Form C-106 Notice of Intent*
- (3) letter from transporter agreeing to utilization of ACT system as shown on schematic diagram.
 - *Attached as part of Form C-106 Notice of Intent*

C. The division shall not approve form C-106 unless the operator of the ACT system will install and operate the ACT system in compliance with the following requirements.

- (1) Provision is made for accurate determination and recording of uncorrected volume and applicable temperature, or of temperature corrected volume. The system's overall accuracy shall equal or surpass manual methods.
 - *The LACT system is more accurate when compared to a manual tank sale. It is proved per BLM Onshore Order #4 Measurement of Oil and API MPMS Chapter 4 Proving Systems; with a volumetric prover that meets the requirements set forth in Onshore Order #4. The LACT also has a temperature RTD which will be calibrated semi-annually, unless more frequent verification is requested by the division.*
- (2) Provision is made for representative sampling of the oil transferred for determination of API gravity and BS&W content.
 - *The LACT is equipped with a flow proportional sampler (sample probe and actuated valve). The sampled fluid is stored in a sealed cylinder that is used for API gravity and S&W determination.*
- (3) Provision is made if required by either the oil's producer or the transporter to give adequate assurance that the ACT system runs only merchantable oil.

- *The LACT is equipped with a water cut analyzer that communicates with the flow computer. When the S&W set point is reached the divert valve will engage sending non-merchantable oil to a divert tank. The set point can be adjusted in the flow computer but only if agreed upon by both shipper and producer.*

(4) Provision is made for set-stop counters to stop the flow of oil through the ACT system at or prior to the time the allowable has been run. Counters shall provide non-reset totalizers that are visible for inspection at all times.

- *The Coriolis meter has non-resettable totalizer which is always visibly available on the LCD display.*

(5) Necessary controls and equipment are enclosed and sealed, or otherwise arranged to provide assurance against, or evidence of, accidental or purposeful mismeasurement resulting from tampering.

- *Required ports are sealed and tracked in the seal log.*

(6) The ACT system's components are properly sized to ensure operation within the range of their established ratings. All system components that require periodic calibration or inspection for proof of continued accuracy are readily accessible; the frequency and methods of the calibration or inspection shall be as set forth in Paragraph (12) of Subsection C of 19.15.18.15 NMAC.

- *The Coriolis is proved per BLM Onshore Order #4 Measurement of Oil and API MPMS Chapter 4 Proving Systems; with a volumetric prover that meets the requirements set forth in Onshore Order #4. The prover is NIST traceable and water drawn on a bi-annual basis. Proving will be consistent with Onshore Order #4, unless a variance is granted by the Division. NMOC representatives are sent the schedule to witness if desired. The temperature transmitter is verified on a semi-annual basis, unless more frequent verification is requested by the Division. The water cut analyzer is calibrated as needed.*

(7) The control and recording system includes adequate fail-safe features that provide assurance against mismeasurement in the event of power failure, or the failure of the ACT system's component parts.

- *In the event of power failure, the divert valve mechanically goes to "failed state" and no longer sales oil but only sends it to the divert tank.*
- *All of the historized volume data is stored in flow computer memory with battery backup and is also transmitted by SCADA, multiple times a day, to an office server. So even during a power failure no oil volume is lost.*
- *In the event of a malfunction, the LACT unit is programmed to shut off and divert valve is forced to close and no longer sales oil but only sends it to the divert tank. The malfunction is also logged by the flow computer.*

(8) The ACT system and allied facilities include fail-safe equipment as may be necessary, including high level switches in the surge tank or overflow storage tank that, in the event of power failure or malfunction of the ACT or other equipment, will shut down artificially lifted wells connected to the ACT system and will shut in flowing wells at the well-head or at the header manifold, in which latter case the operator of the ACT system shall pressure test all flowlines to at least 1½ times the maximum well-head shut-in pressure prior to the ACT system's initial use and every two years thereafter.

- *Hi level switches are in place and will shut the well in at the inlet to the production unit in the event of a full tank. Flow lines were tested to 1 ½ times shut in pressure at initial construction. Testing will commence every two years to ensure piping integrity.*

(9) As an alternative to the requirements of Paragraph (8) of Subsection C of 19.15.18.15 NMAC the producer shall provide and at all times maintain a minimum of available storage capacity above the normal high working level of the surge tank to receive and hold the amount of oil that may be produced during maximum unattended time of lease operation.

- *N/A*

(10) In all ACT systems employing automatic measuring tanks, weir-type measuring vessels, positive volume metering chambers or any other volume measuring container, the container and allied components shall be properly calibrated prior to initial use and shall be operated, maintained and inspected as necessary to ensure against incrustation, changes in clingage factors, valve leakage or other leakage and improper action of floats, level detectors, etc.

- *N/A – Coriolis Meter*

(11) In ACT systems employing positive displacement meters, the meter and allied components shall be properly calibrated prior to initial use and shall be operated, maintained and inspected as necessary to ensure against oil mismeasurement.

- *The Coriolis is proved per BLM Onshore Order #4 Measurement of Oil and API MPMS Chapter 4 Proving Systems; with a volumetric prover that meets the requirements set forth in Onshore Order #4. The prover is NIST traceable and water drawn on a bi-annual basis. Monthly proving will continue per the rule, unless a variance is granted by the Division. NMOCD representatives are sent the schedule to witness if desired. The temperature transmitter is verified on a semi-annual basis, unless more frequent verification is requested by the Division.*

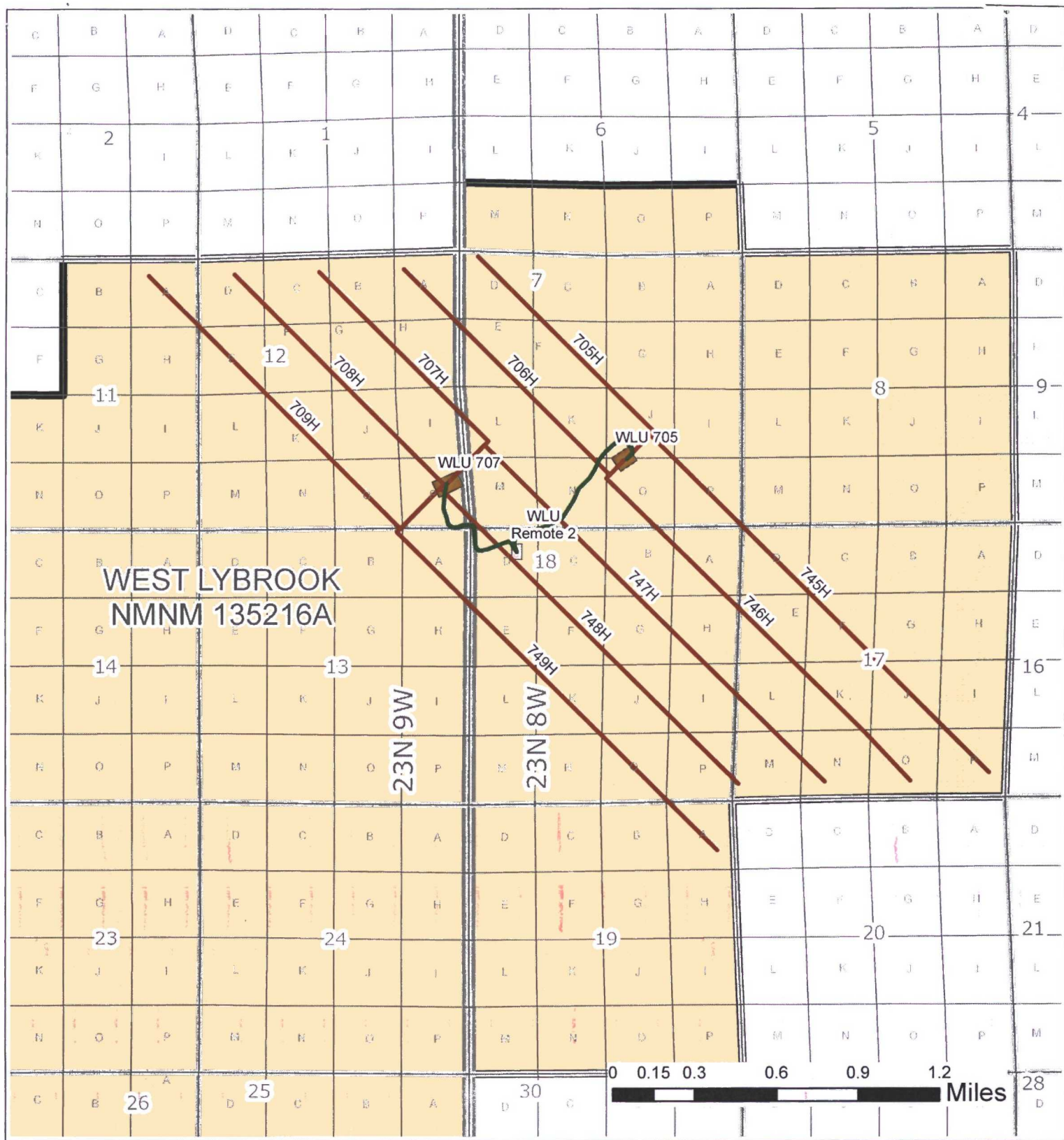
(12) The operator of the ACT system shall check the measuring and recording devices of ACT systems for accuracy at least once each month unless it has obtained an exception to such determination from the division. Where applicable, the operator of the ACT system shall use API standard 1101, Measurement of Petroleum Hydrocarbons by Positive Displacement Meter. Meters may be proved against master meters, portable prover tanks or prover tanks permanently installed on the lease. If the operator of the ACT system uses permanently installed prover tanks, the distance between the opening and closing levels and the provision for determining the opening and closing readings shall be sufficient to detect variations of 5/100 of one percent. The operator of the ACT system shall file reports of determination on the division form entitled "meter test report" or on another acceptable form in duplicate with the appropriate division district office.

- *The Coriolis is proved per BLM Onshore Order #4 Measurement of Oil and API MPMS Chapter 4 Proving Systems; with a volumetric prover that meets the requirements set forth in Onshore Order #4. The prover is NIST traceable and water drawn on a bi-annual basis. Monthly proving will continue per the rule, unless a variance is granted by the Division. NMOCD representatives are sent the schedule to witness if desired. The temperature transmitter is verified on a semi-annual basis, unless more frequent verification is requested by the Division.*

(13) To obtain an exception to the requirement in Paragraph (12) of Subsection C of 19.15.18.15 NMAC that all measuring and recording devices be checked for accuracy once each month, either the producer or transporter may file a request with the director setting forth facts pertinent to the exception. The application shall include a history of the average factors previously obtained, both tabulated and plotted on a graph of factors versus time, showing that the particular installation has experienced no erratic drift. The applicant shall also furnish evidence that the other interested party has agreed to the exception. The director may then set the frequency for determination of the system's accuracy at the interval which the director deems prudent.

- *N/A*

D. The division may revoke its approval of an ACT system's form C-106 if the system's operator fails to operate it in compliance with 19.15.18.15 NMAC.



Pipeline

Laterals

Remote Pad w/LACT Equip & Tank Battery

Well Pad

Approved Unit

Scale (absolute) -
1:30,000

Updated: 3/6/2017
By: winkler

Document Path: S:\GIS\Projects\LACTApplications_RBW_170306\LACTApps_RBW_17306.mxd



WLU Remote 2
Lease Plat Map
San Juan County, NM

District I
1625 N. French Drive, Hobbs, NM 88240
Phone: (575) 393-6161 Fax: (575) 393-0720

District II
811 S First Street, Artesia, NM 88210
Phone: (575) 748-1283 Fax: (575) 748-9720

District III
1000 Rio Brazos Road, Aztec, NM 87410
Phone: (505) 334-6178 Fax: (505) 334-6170

District IV
1220 S. St Francis Drive, Santa Fe, NM 87505
Phone: (505) 476-3460 Fax: (505) 476-3462

State of New Mexico
Energy, Minerals & Natural Resources Department

Form C-102
Revised August 1, 2011

Submit one copy to
Appropriate District Office

OIL CONSERVATION DIVISION

1220 South St. Francis Drive
Santa Fe, NM 87505

☐ AMENDED REPORT

WELL LOCATION AND ACREAGE DEDICATION PLAT

*API Number 30-045-35748		*Pool Code 98157		*Pool Name LYBROOK MANCOS W	
*Property Code 315250		*Property Name W LYBROOK UNIT			*Well Number 705H
*OGRID No. 120782		*Operator Name WPX ENERGY PRODUCTION, LLC			*Elevation 6778

¹⁰ Surface Location

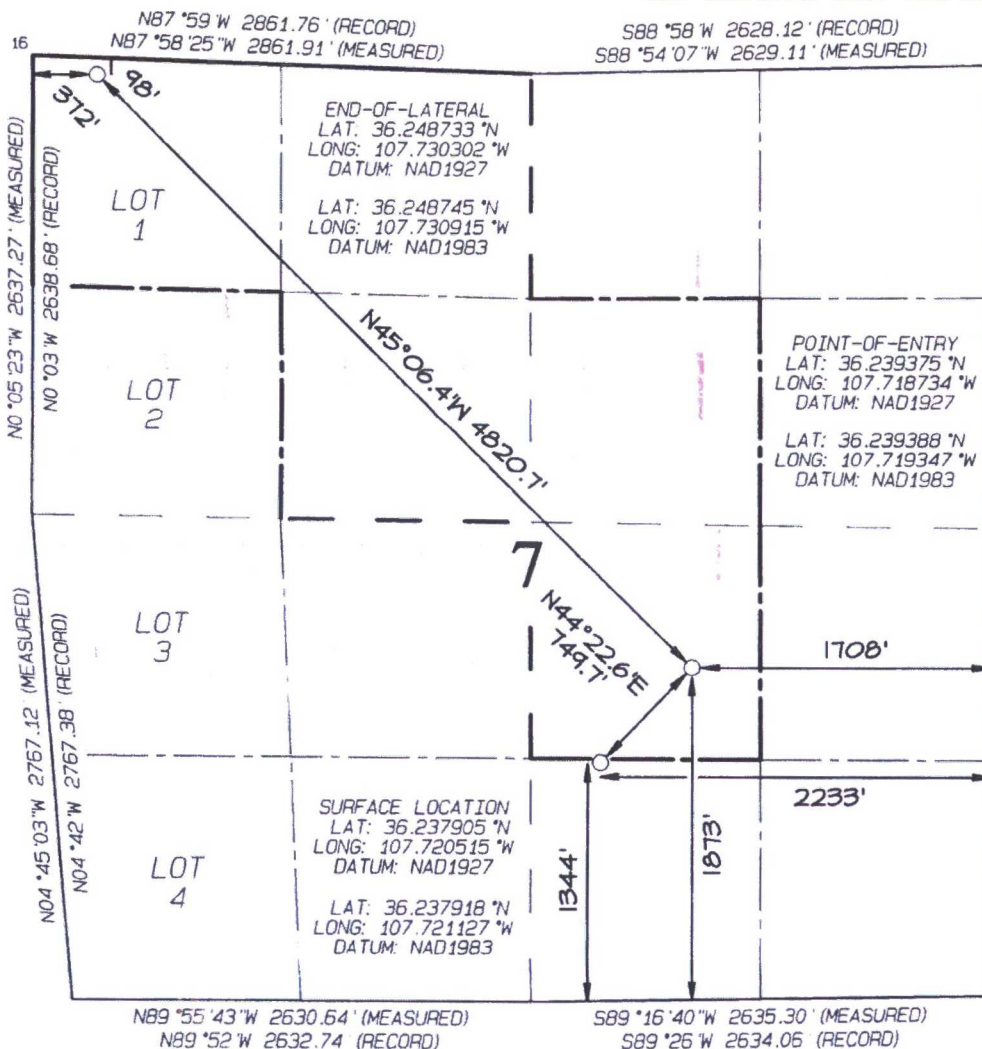
UL or lot no.	Section	Township	Range	Lot Idn	Feet from the	North/South line	Feet from the	East/West line	County
0	7	23N	8W		1344	SOUTH	2233	EAST	SAN JUAN

¹¹ Bottom Hole Location If Different From Surface

UL or lot no.	Section	Township	Range	Lot Idn	Feet from the	North/South line	Feet from the	East/West line	County
0	7	23N	8W	1	98	NORTH	372	WEST	SAN JUAN

¹² Dedicated Acres 200.21 N/2 NW/4, SE/4 NW/4 SW/4 NE/4, NW/4 SE/4 - Section 7		¹³ Joint or Infill	¹⁴ Consolidation Code	¹⁵ Order No R-14051 - 12,807.24 Acres
--	--	-------------------------------	----------------------------------	---

NO ALLOWABLE WILL BE ASSIGNED TO THIS COMPLETION
UNTIL ALL INTERESTS HAVE BEEN CONSOLIDATED OR A
NON-STANDARD UNIT HAS BEEN APPROVED BY THE DIVISION



¹⁷ OPERATOR CERTIFICATION

I hereby certify that the information contained herein is true and complete to the best of my knowledge and belief, and that this organization either owns a working interest or unleased mineral interest in the land including the proposed bottom-hole location or has a right to drill this well at this location pursuant to a contract with an owner of such a mineral or working interest, or to a voluntary pooling agreement or a compulsory pooling order heretofore entered by the division.

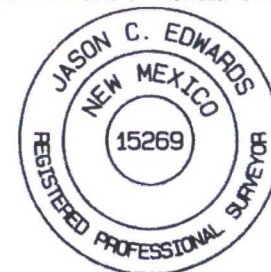
Signature: [Signature] Date: 3/8/17
Printed Name: [Name]
E-Well Address: [Address]

¹⁸ SURVEYOR CERTIFICATION

I hereby certify that the well location shown on this plat was plotted from field notes of actual surveys made by me or under my supervision, and that the same is true and correct to the best of my belief.

Date Revised: DECEMBER 15, 2015
Date of Survey: MAY 15, 2015

Signature and Seal of Professional Surveyor



JASON C. EDWARDS

Certificate Number 15269

District I
1625 N. French Drive, Hobbs, NM 88240
Phone: (575) 393-6161 Fax: (575) 393-0720

District II
811 S. First Street, Artesia, NM 88210
Phone: (575) 748-1283 Fax: (575) 748-9720

District III
1000 Rio Brazos Road, Aztec, NM 87410
Phone: (505) 334-6178 Fax: (505) 334-6170

District IV
1220 S. St. Francis Drive, Santa Fe, NM 87505
Phone: (505) 476-3460 Fax: (505) 476-3462

State of New Mexico
Energy, Minerals & Natural Resources Department

Form C-102
Revised August 1, 2011

Submit one copy to
Appropriate District Office

OIL CONSERVATION DIVISION

1220 South St. Francis Drive
Santa Fe, NM 87505

☐ AMENDED REPORT

WELL LOCATION AND ACREAGE DEDICATION PLAT

*API Number 30-045-35749		*Pool Code 98157	*Pool Name LYBROOK MANCOS W
*Property Code 315250	*Property Name W LYBROOK UNIT		*Well Number 706H
*GRID No. 120782	*Operator Name WPX ENERGY PRODUCTION, LLC		*Elevation 6778

10 Surface Location

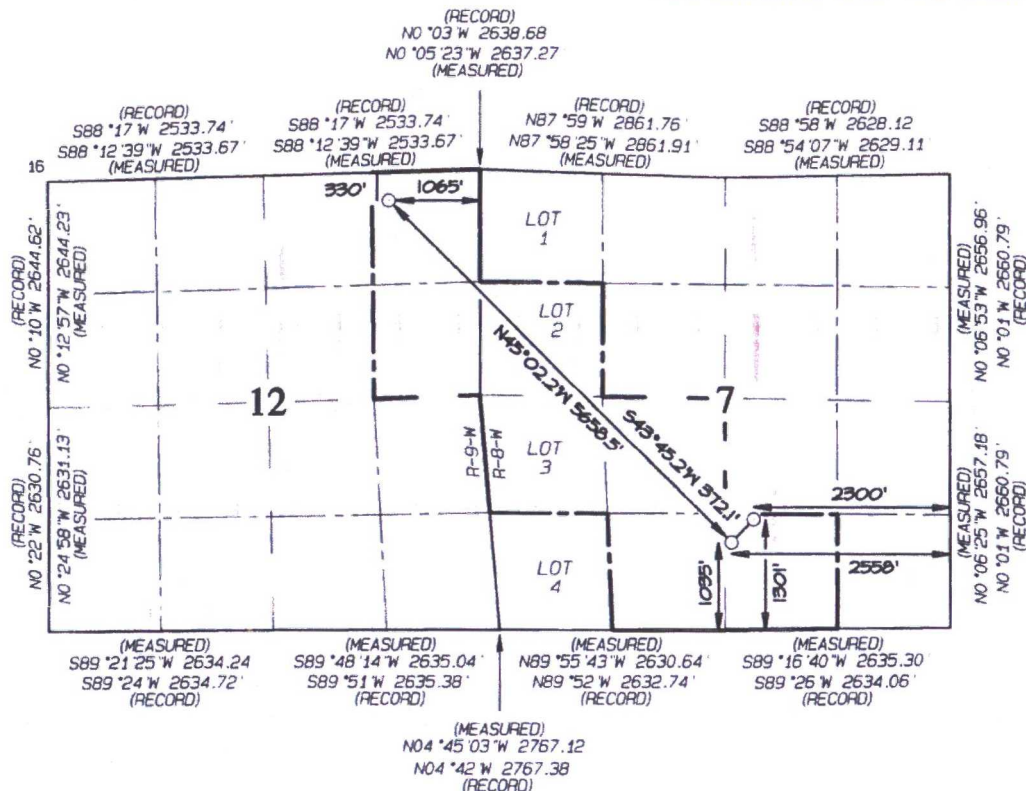
UL or lot no.	Section	Township	Range	Lot Idn	Feet from the	North/South line	Feet from the	East/West line	County
0	7	23N	8W		1301	SOUTH	2300	EAST	SAN JUAN

11 Bottom Hole Location If Different From Surface

UL or lot no.	Section	Township	Range	Lot Idn	Feet from the	North/South line	Feet from the	East/West line	County
A	12	23N	9W		330	NORTH	1065	EAST	SAN JUAN

*Dedicated Acres 279.82		*Joint or Infill	*Consolidation Code	*Order No. R-14051 - 12,807.24 Acres
E/2 NE/4 - Section 12, T23N, R9W SW/4 NW/4, N/2 SW/4, SE/4 SW/4 SW/4 SE/4 - Section 7, T23N, R8W				

NO ALLOWABLE WILL BE ASSIGNED TO THIS COMPLETION
UNTIL ALL INTERESTS HAVE BEEN CONSOLIDATED OR A
NON-STANDARD UNIT HAS BEEN APPROVED BY THE DIVISION



17 OPERATOR CERTIFICATION

I hereby certify that the information contained herein is true and complete to the best of my knowledge and belief, and that this organization either owns a working interest or unleased mineral interest in the land including the proposed bottom-hole location or has a right to drill this well at this location pursuant to a contract with an owner of such a mineral or working interest, or to a voluntary pooling agreement or a compulsory pooling order heretofore entered by the Division.

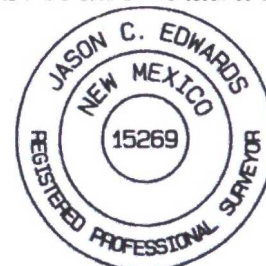
Signature: *[Signature]* Date: 3/8/17
Printed Name: *[Name]*
E-mail Address: *[Email]*

18 SURVEYOR CERTIFICATION

I hereby certify that the well location shown on this plat was plotted from field notes of actual surveys made by me or under my supervision, and that the same is true and correct to the best of my belief.

Date Revised: DECEMBER 15, 2015
Date of Survey: MAY 15, 2015

Signature and Seal of Professional Surveyor



JASON C. EDWARDS
Certificate Number 15269

END-OF-LATERAL
330' FSL 1065' FEL
SECTION 12, T23N, R9W
LAT: 36.248044°N
LONG: 107.735177°W
DATUM: NAD1927
LAT: 36.248056°N
LONG: 107.735790°W
DATUM: NAD1983

POINT-OF-ENTRY
1035' FSL 2558' FEL
SECTION 7, T23N, R8W
LAT: 36.237047°N
LONG: 107.721615°W
DATUM: NAD1927
LAT: 36.237060°N
LONG: 107.722228°W
DATUM: NAD1983

SURFACE LOCATION
1301' FSL 2300' FEL
SECTION 7, T23N, R8W
LAT: 36.237785°N
LONG: 107.720741°W
DATUM: NAD1927
LAT: 36.237798°N
LONG: 107.721354°W
DATUM: NAD1983

District I
1625 N. French Drive, Hobbs, NM 88240
Phone: (575) 393-6161 Fax: (575) 393-0720
District II
811 S. First Street, Artesia, NM 88210
Phone: (575) 748-1283 Fax: (575) 748-9720
District III
1000 Rio Brazos Road, Aztec, NM 87410
Phone: (505) 334-6178 Fax: (505) 334-6170
District IV
1220 S. St. Francis Drive, Santa Fe, NM 87505
Phone: (505) 476-3460 Fax: (505) 476-3462

State of New Mexico
Energy, Minerals & Natural Resources Department

Form C-102
Revised August 1, 2011

Submit one copy to
Appropriate District Office

OIL CONSERVATION DIVISION
1220 South St. Francis Drive
Santa Fe, NM 87505

☐ AMENDED REPORT

WELL LOCATION AND ACREAGE DEDICATION PLAT

*API Number 30-045-35750	*Pool Code 98157	*Pool Name LYBROOK MANCOS W
*Property Code 315250	*Property Name W LYBROOK UNIT	*Well Number 745H
*GRID No 120782	*Operator Name WPX ENERGY PRODUCTION, LLC	*Elevation 6778

10 Surface Location

UL or lot no.	Section	Township	Range	Lot Idn	Feet from the	North/South line	Feet from the	East/West line	County
0	7	23N	8W		1333	SOUTH	2250	EAST	SAN JUAN

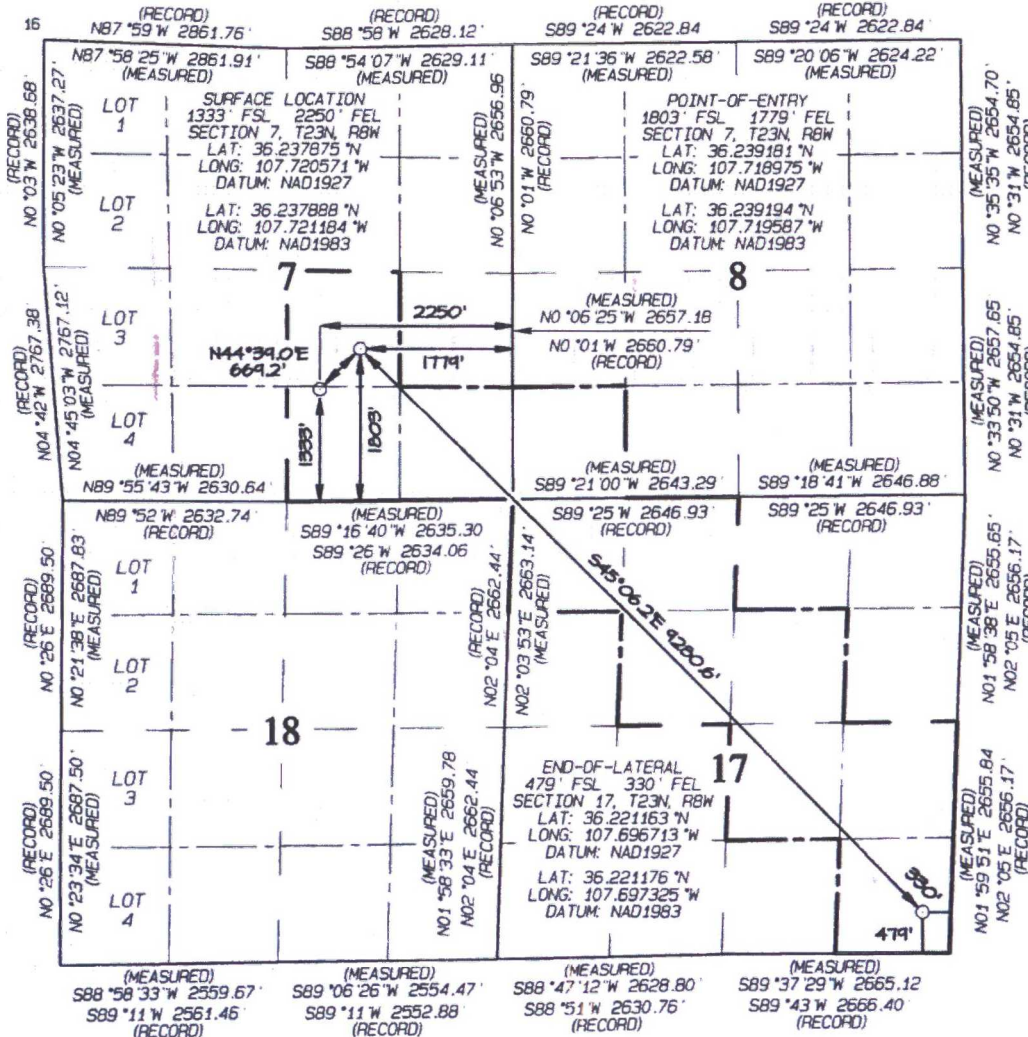
11 Bottom Hole Location If Different From Surface

UL or lot no.	Section	Township	Range	Lot Idn	Feet from the	North/South line	Feet from the	East/West line	County
P	17	23N	8W		479	SOUTH	330	EAST	SAN JUAN

12 Dedicated Acres 440.0 SW/4 SW/4 - Section 8
S/2 SE/4, NW/4 SE/4 - Section 7
N/2 NW/4, SE/4 NW/4, SW/4 NE/4
N/2 SE/4, SE/4 SE/4 - Section 17

13 Joint or Infill 14 Consolidation Code 15 Order No.
R-14051 - 12,807.24 Acres

NO ALLOWABLE WILL BE ASSIGNED TO THIS COMPLETION
UNTIL ALL INTERESTS HAVE BEEN CONSOLIDATED OR A
NON-STANDARD UNIT HAS BEEN APPROVED BY THE DIVISION



17 OPERATOR CERTIFICATION
I hereby certify that the information contained herein is true and complete to the best of my knowledge and belief, and that this organization either owns a working interest or unleased mineral interest in the land including the proposed bottom-hole location or has a right to drill this well at this location pursuant to a contract with an owner of such a mineral or working interest, or to a voluntary pooling agreement or a compulsory pooling order heretofore entered by the division.

Signature: *[Signature]* Date: 3/8/11
Printed Name: *[Name]*
E-mail Address: *[Email]*

18 SURVEYOR CERTIFICATION
I hereby certify that the well location shown on this plat was plotted from field notes of actual surveys made by me or under my supervision and that the same is true and correct to the best of my belief.

Date Revised: DECEMBER 15, 2015
Date of Survey: MAY 15, 2015
Signature and Seal of Professional Surveyor



JASON C. EDWARDS
Certificate Number 15269

District I
1625 N. French Drive, Hobbs, NM 88240
Phone: (575) 393-6161 Fax: (575) 393-0720

District II
811 S. First Street, Artesia, NM 88210
Phone: (575) 748-1283 Fax: (575) 748-9720

District III
1000 Rio Brazos Road, Aztec, NM 87410
Phone: (505) 334-6178 Fax: (505) 334-6170

District IV
1220 S. St. Francis Drive, Santa Fe, NM 87505
Phone: (505) 476-3460 Fax: (505) 476-3462

State of New Mexico
Energy, Minerals & Natural Resources Department

Form C-102
Revised August 1, 2011

Submit one copy to
Appropriate District Office

OIL CONSERVATION DIVISION
1220 South St. Francis Drive
Santa Fe, NM 87505

☐ AMENDED REPORT

WELL LOCATION AND ACREAGE DEDICATION PLAT

*API Number 30-045-35751		*Pool Code 98157	*Pool Name LYBROOK MANCOS W
*Property Code 315250	*Property Name W LYBROOK UNIT		*Well Number 746H
*GRID No 120782	*Operator Name WPX ENERGY PRODUCTION, LLC		*Elevation 6778

¹⁰ Surface Location

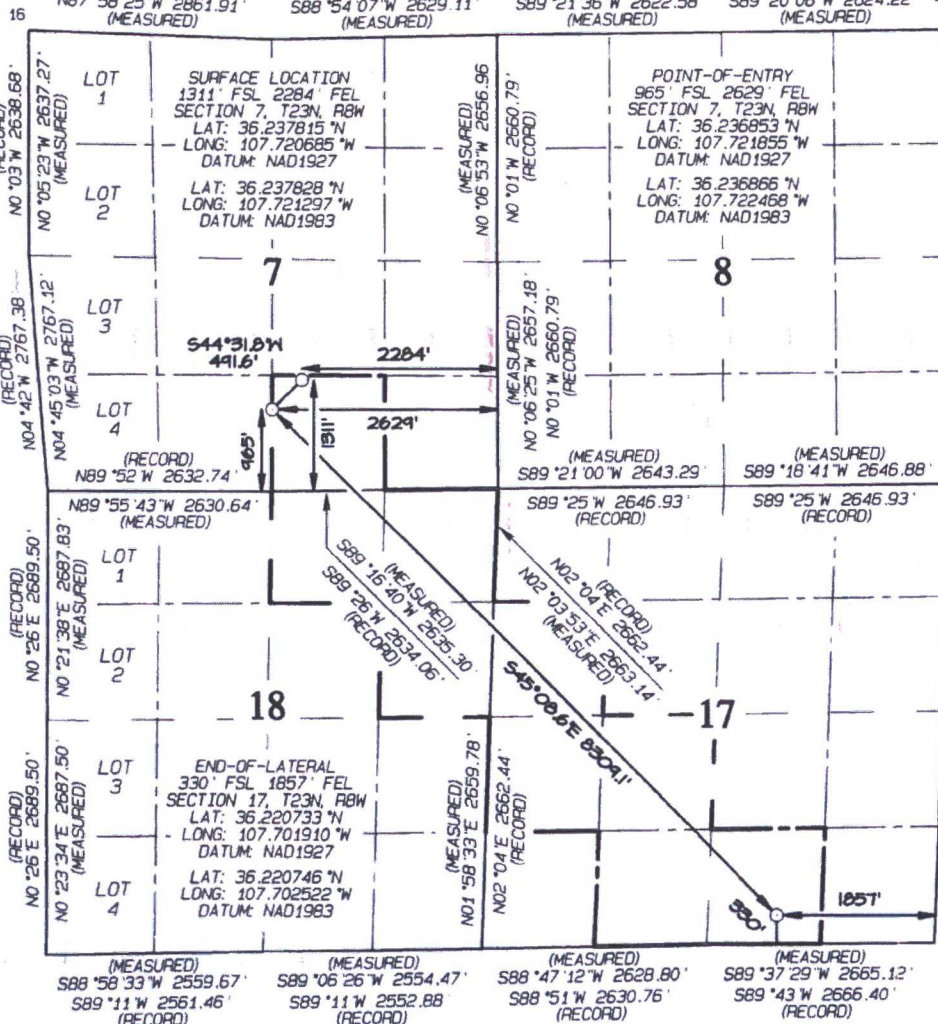
UL or lot no.	Section	Township	Range	Lot Idn	Feet from the	North/South line	Feet from the	East/West line	County
0	7	23N	8W		1311	SOUTH	2284	EAST	SAN JUAN

¹¹ Bottom Hole Location If Different From Surface

UL or lot no	Section	Township	Range	Lot Idn	Feet from the	North/South line	Feet from the	East/West line	County
0	17	23N	8W		330	SOUTH	1857	EAST	SAN JUAN

¹² Dedicated Acres 360.00 SW/4 SE/4 - Section 7 SW/4 NW/4, N/2 SW/4 SE/4 SW/4, SW/4 SE/4 - Section 17 N/2 NE/4, SE/4 NE/4 - Section 18	¹³ Joint or Infill	¹⁴ Consolidation Code	¹⁵ Order No. R-14051 - 12,807.24 Acres
--	-------------------------------	----------------------------------	--

NO ALLOWABLE WILL BE ASSIGNED TO THIS
COMPLETION UNTIL ALL INTERESTS HAVE
BEEN CONSOLIDATED OR A NON-STANDARD
UNIT HAS BEEN APPROVED BY THE DIVISION



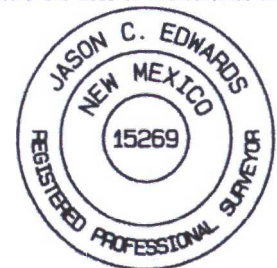
¹⁷ OPERATOR CERTIFICATION
I hereby certify that the information contained herein is true and complete to the best of my knowledge and belief, and that this organization either owns a working interest or unleased mineral interest in the land including the proposed bottom-hole location or has a right to drill this well at this location pursuant to a contract with an owner of such a mineral or working interest, or to a voluntary pooling agreement or a compulsory pooling order heretofore entered by the division.

Signature: [Signature]
Date: 3/8/17
Printed Name: [Name]
E-mail Address: [Email]

¹⁸ SURVEYOR CERTIFICATION
I hereby certify that the well location shown on this plat was plotted from field notes of actual surveys made by me or under my supervision, and that the same is true and correct to the best of my belief.

Date Revised: DECEMBER 15, 2015
Date of Survey: MAY 15, 2015

Signature and Seal of Professional Surveyor



JASON C. EDWARDS
Certificate Number 15269

District IV
1220 S. St. Francis Drive, Santa Fe, NM 87505
Phone: (505) 476-3460 Fax: (505) 476-3462

Certificate Number 15269

District I
1625 N. French Drive, Hobbs, NM 88240
Phone: (575) 393-6161 Fax: (575) 393-0720

District II
811 S First Street, Artesia, NM 88210
Phone: (575) 748-1283 Fax: (575) 748-9720

District III
1000 Rio Brazos Road, Aztec, NM 87410
Phone: (505) 334-6178 Fax: (505) 334-6170

District IV
1220 S. St. Francis Drive, Santa Fe, NM 87505
Phone: (505) 476-3460 Fax: (505) 476-3462

State of New Mexico
Energy, Minerals & Natural Resources Department

Form C-102
Revised August 1, 2011

Submit one copy to
Appropriate District Office

OIL CONSERVATION DIVISION

1220 South St. Francis Drive
Santa Fe, NM 87505

☐ AMENDED REPORT

AS DRILLED

WELL LOCATION AND ACREAGE DEDICATION PLAT

*API Number 30-045-35740		*Pool Code 98157	*Pool Name LYBROOK MANCOS W
*Property Code 315250	*Property Name W LYBROOK UNIT		*Well Number 708H
*GRID No. 120782	*Operator Name WPX ENERGY PRODUCTION, LLC		*Elevation 6733'

¹⁰ Surface Location

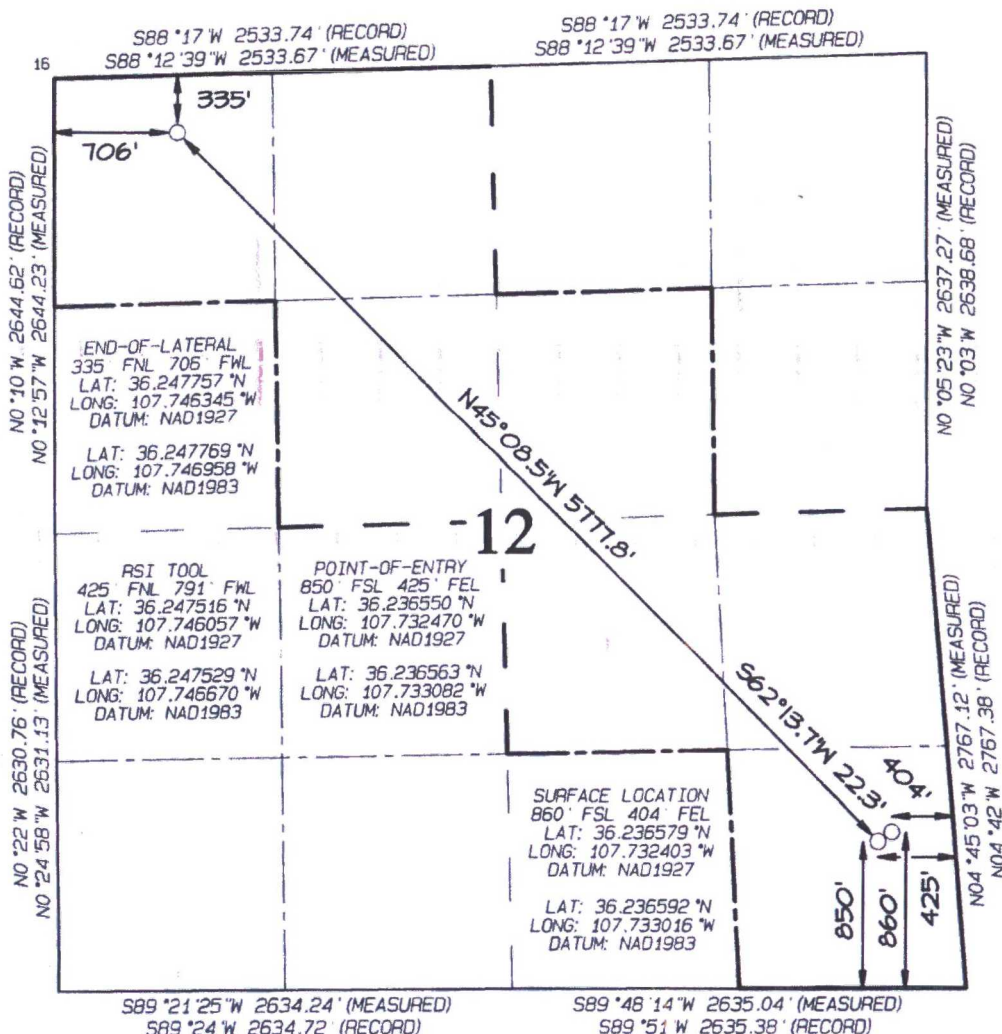
UL or lot no.	Section	Township	Range	Lot Idn	Feet from the	North/South line	Feet from the	East/West line	County
P	12	23N	9W		860	SOUTH	404	EAST	SAN JUAN

¹¹ Bottom Hole Location If Different From Surface

UL or lot no.	Section	Township	Range	Lot Idn	Feet from the	North/South line	Feet from the	East/West line	County
D	12	23N	9W		335	NORTH	706	WEST	SAN JUAN

¹² Dedicated Acres 280.0	N/2 NW/4, SE/4 NW/4 SW/4 NE/4, N/2 SE/4 SE/4 SE/4 (Section 12)	¹³ Joint or Infill	¹⁴ Consolidation Code	¹⁵ Order No. R-14051 - 12,807.24 Acres
--	--	-------------------------------	----------------------------------	--

NO ALLOWABLE WILL BE ASSIGNED TO THIS COMPLETION
UNTIL ALL INTERESTS HAVE BEEN CONSOLIDATED OR A
NON-STANDARD UNIT HAS BEEN APPROVED BY THE DIVISION



¹⁷ OPERATOR CERTIFICATION
I hereby certify that the information contained herein is true and complete to the best of my knowledge and belief, and that this organization either owns a working interest or unleased mineral interest in the land including the proposed bottom-hole location or has a right to drill this well at this location pursuant to a contract with an owner of such a mineral or working interest, or to a voluntary pooling agreement or a compulsory pooling order heretofore entered by the division.

Signature
Lacey Granillo

Date
3/8/17

Printed Name
lacey.granillo@wpxenergy.com

E-mail Address

¹⁸ SURVEYOR CERTIFICATION

I hereby certify that the well location shown on this plat was plotted from field notes of actual surveys made by me or under my supervision, and that the same is true and correct to the best of my belief.

Date Revised: APRIL 6, 2016
Date of Survey: MAY 18, 2015

Signature and Seal of Professional Surveyor



JASON C. EDWARDS
Certificate Number 15269

District I
1625 N. French Drive, Hobbs, NM 88240
Phone: (575) 393-6161 Fax: (575) 393-0720

District II
811 S. First Street, Artesia, NM 88210
Phone: (575) 748-1283 Fax: (575) 748-9720

District III
1000 Rio Brazos Road, Aztec, NM 87410
Phone: (505) 334-6178 Fax: (505) 334-6170

District IV
1220 S. St. Francis Drive, Santa Fe, NM 87505
Phone: (505) 476-3460 Fax: (505) 476-3462

State of New Mexico
Energy, Minerals & Natural Resources Department

Form C-102
Revised August 1, 2011

Submit one copy to
Appropriate District Office

OIL CONSERVATION DIVISION

1220 South St. Francis Drive
Santa Fe, NM 87505

☐ AMENDED REPORT

AS DRILLED

WELL LOCATION AND ACREAGE DEDICATION PLAT

*API Number 30-045-35741		*Pool Code 98157	*Pool Name LYBROOK MANCOS W
*Property Code 315250	*Property Name W LYBROOK UNIT		*Well Number 709H
*OGRID No. 120782	*Operator Name WPX ENERGY PRODUCTION, LLC		*Elevation 6733'

¹⁰ Surface Location

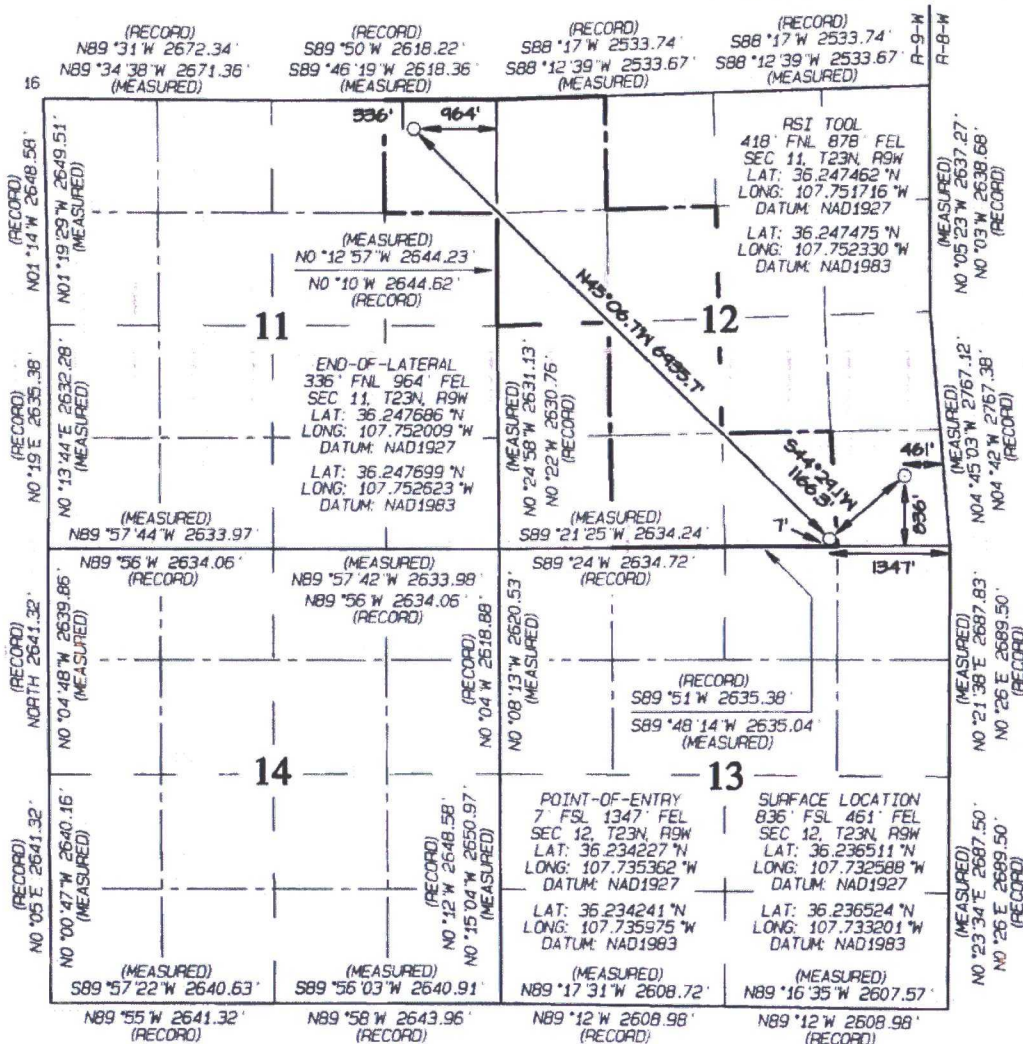
UL or lot no	Section	Township	Range	Lot Ion	Feet from the	North/South line	Feet from the	East/West line	County
P	12	23N	9W		836	SOUTH	461	EAST	SAN JUAN

¹¹ Bottom Hole Location If Different From Surface

UL or lot no.	Section	Township	Range	Lot Ion	Feet from the	North/South line	Feet from the	East/West line	County
A	11	23N	9W		336	NORTH	964	EAST	SAN JUAN

¹² Dedicated Acres 280.0 NE/4 NE/4 (Section 11) NW/4 NW/4, S/2 NW/4 E/2 SW/4, SW/4 SE/4 (Section 12)		¹³ Joint or Infill	¹⁴ Consolidation Code	¹⁵ Order No. R-14051 - 12,807.24 Acres
--	--	-------------------------------	----------------------------------	--

NO ALLOWABLE WILL BE ASSIGNED TO THIS COMPLETION
UNTIL ALL INTERESTS HAVE BEEN CONSOLIDATED OR A
NON-STANDARD UNIT HAS BEEN APPROVED BY THE DIVISION



¹⁷ OPERATOR CERTIFICATION

I hereby certify that the information contained herein is true and complete to the best of my knowledge and belief, and that this organization either owns a working interest or unleased mineral interest in the land including the proposed bottom-hole location or has a right to drill this well at this location pursuant to a contract with an owner of such a mineral or working interest, or to a voluntary pooling agreement or a compulsory pooling order heretofore entered by the division.

Signature: *Lacey Granillo* Date: 3/8/17

Printed Name: Lacey Granillo

lacey.granillo@wpxenergy.com

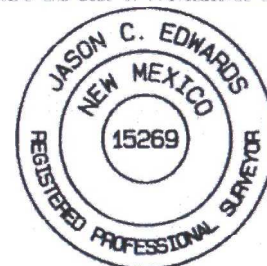
E-mail Address

¹⁸ SURVEYOR CERTIFICATION

I hereby certify that the well location shown on this plat was plotted from field notes of actual surveys made by me or under my supervision and that the same is true and correct to the best of my belief.

Date Revised: MARCH 9, 2016
Date of Survey: MAY 18, 2015

Signature and Seal of Professional Surveyor



JASON C. EDWARDS

Certificate Number 15269

JASON C. EDWARDS
Certificate Number 15269

District I
1625 N French Drive, Hobbs, NM 88240
Phone: (575) 393-6161 Fax: (575) 393-0720

District II
811 S First Street, Artesia, NM 88210
Phone: (575) 748-1283 Fax: (575) 748-9720

District III
1000 Rio Brazos Road, Aztec, NM 87410
Phone: (505) 334-6178 Fax: (505) 334-6170

District IV
1220 S. St. Francis Drive, Santa Fe, NM 87505
Phone: (505) 476-3460 Fax: (505) 476-3462

State of New Mexico
Energy, Minerals & Natural Resources Department

Form C-102
Revised August 1, 2011

Submit one copy to
Appropriate District Office

OIL CONSERVATION DIVISION

1220 South St. Francis Drive
Santa Fe, NM 87505

☐ AMENDED REPORT

WELL LOCATION AND ACREAGE DEDICATION PLAT

*API Number 30-045-35743		*Pool Code 98157	*Pool Name LYBROOK MANCOS W
*Property Code 315250	*Property Name W LYBROOK UNIT		*Well Number 748H
*GRID No. 120782	*Operator Name WPX ENERGY PRODUCTION, LLC		*Elevation 6733

¹⁰ Surface Location

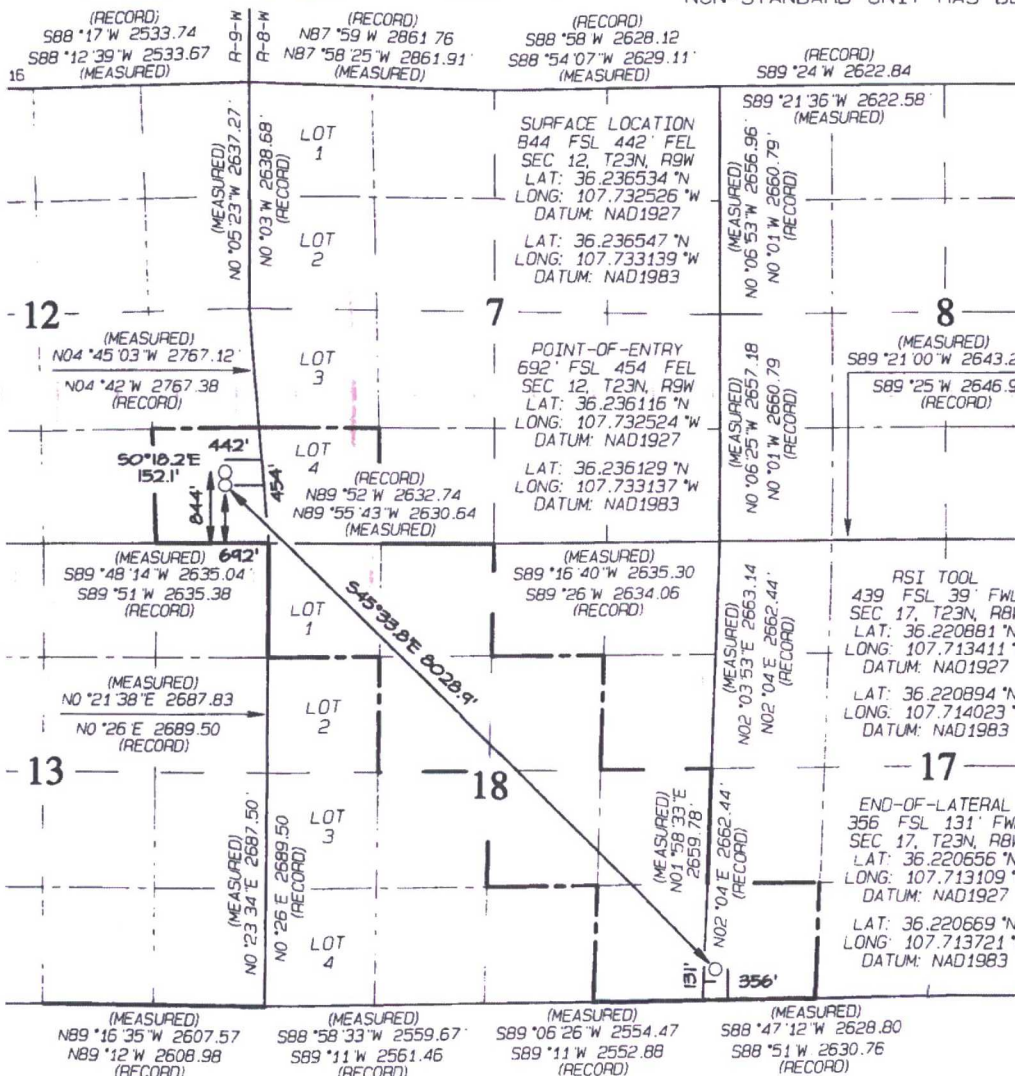
UL or Lot no	Section	Township	Range	Lot Idn	Feet from the	North/South line	Feet from the	East/West line	County
P	12	23N	9W		844	SOUTH	442	EAST	SAN JUAN

¹¹ Bottom Hole Location If Different From Surface

UL or Lot no	Section	Township	Range	Lot Idn	Feet from the	North/South line	Feet from the	East/West line	County
M	17	23N	8W		356	SOUTH	131	WEST	SAN JUAN

*Dedicated Acres 399.20	SE/4 SE/4 (Section 12) SW/4 SW/4 (Section 7) SW/4 SW/4 (Section 17) N/2 NW/4, SE/4 NW/4, SW/4 NE/4 N/2, SE/4, SE/4 SE/4 (Section 18)	*Joint or Infill	*Consolidation Code	*Order No. R-14051 - 12,807.24 Acres
-----------------------------------	--	------------------	---------------------	--

NO ALLOWABLE WILL BE ASSIGNED TO THIS COMPLETION
UNTIL ALL INTERESTS HAVE BEEN CONSOLIDATED OR A
NON-STANDARD UNIT HAS BEEN APPROVED BY THE DIVISION



¹⁷ OPERATOR CERTIFICATION

I hereby certify that the information contained herein is true and complete to the best of my knowledge and belief, and that this organization either owns a working interest or unleased mineral interest in the land including the proposed bottom-hole location or has a right to drill this well at this location pursuant to a contract with an owner of such a mineral or working interest, or to a voluntary pooling agreement or a compulsory pooling order heretofore entered by the division.

Signature: *[Signature]* Date: **38-17**
Printed Name: **Jason C. Edwards**
E-mail Address: **JasonC.Edwards@nmsurveyors.com**

¹⁸ SURVEYOR CERTIFICATION

I hereby certify that the well location shown on this plat was plotted from field notes of actual surveys made by me or under my supervision, and that the same is true and correct to the best of my belief.

Date Revised: **MARCH 31, 2016**
Date of Survey: **MAY 18, 2015**

Signature and Seal of Professional Surveyor



JASON C. EDWARDS

Certificate Number 15269

District I
1625 N. French Drive, Hobbs, NM 88240
Phone: (575) 393-6161 Fax: (575) 393-0720

District II
811 S. First Street, Artesia, NM 88210
Phone: (575) 748-1283 Fax: (575) 748-9720

District III
1000 Rio Brazos Road, Aztec, NM 87410
Phone: (505) 334-6178 Fax: (505) 334-6170

District IV
1220 S. St. Francis Drive, Santa Fe, NM 87505
Phone: (505) 476-3460 Fax: (505) 476-3462

State of New Mexico
Energy, Minerals & Natural Resources Department

Form C-102
Revised August 1, 2011

Submit one copy to
Appropriate District Office

OIL CONSERVATION DIVISION
1220 South St. Francis Drive
Santa Fe, NM 87505

☒ AMENDED REPORT

As Drilled Plat

WELL LOCATION AND ACREAGE DEDICATION PLAT

*API Number 30-045-35744	*Pool Code 98157	*Pool Name LYBROOK MANCOS W
*Property Code 315250	*Property Name W LYBROOK UNIT	*Well Number 749H
*GRID No. 120782	*Operator Name WPX ENERGY PRODUCTION, LLC	*Elevation 6733'

10 Surface Location

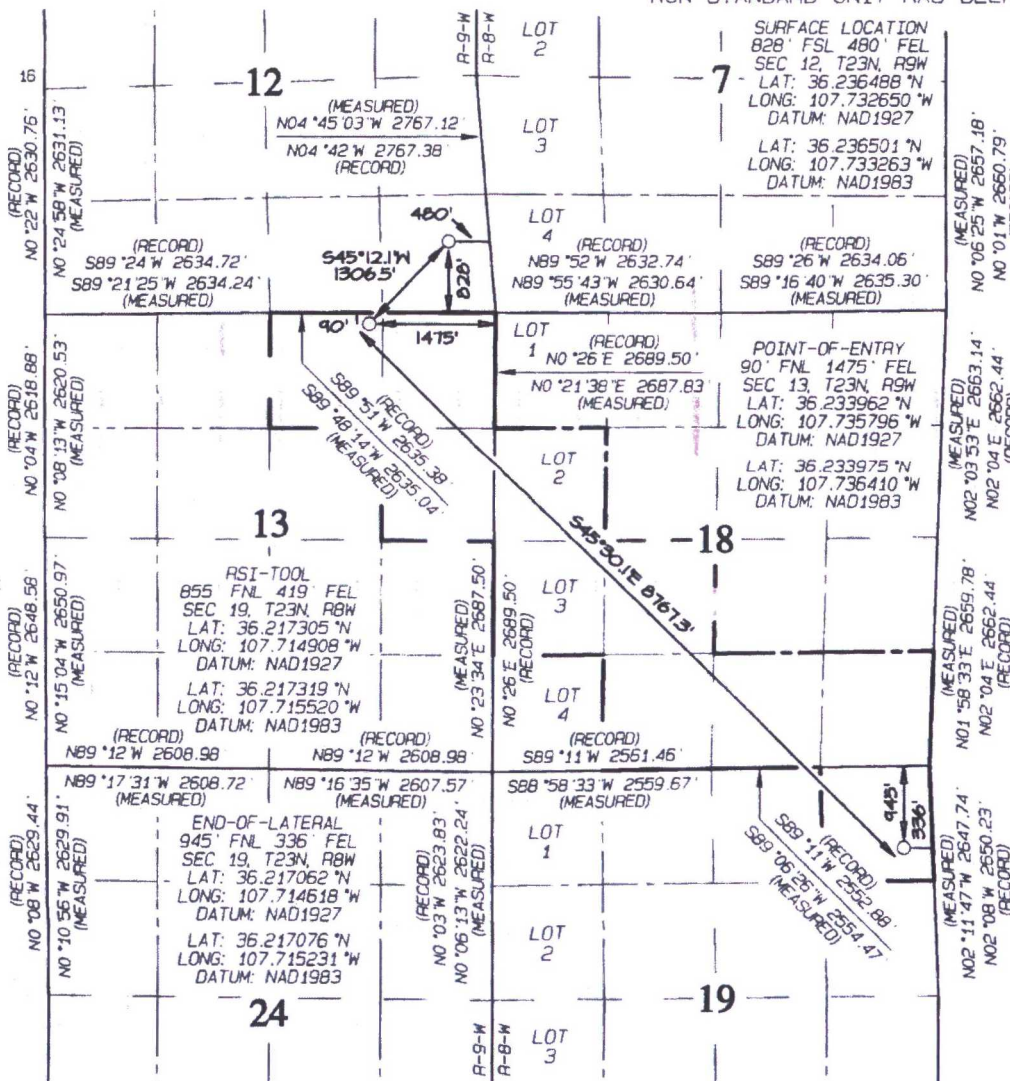
UL or lot no.	Section	Township	Range	Lot Idn	Feet from the	North/South line	Feet from the	East/West line	County
P	12	23N	9W		828	SOUTH	480	EAST	SAN JUAN

11 Bottom Hole Location If Different From Surface

UL or lot no.	Section	Township	Range	Lot Idn	Feet from the	North/South line	Feet from the	East/West line	County
A	19	23N	8W		945	NORTH	336	EAST	SAN JUAN

*Dedicated Acres 399.76	NE/4 NE/4 (Section 19) SW/4 NW/4, N/2 SW/4 SE/4 SW/4, S/2 SE/4 (Section 18) N/2 NE/4, SE/4 NE/4 (Section 13)	*Joint or Infill NO	*Consolidation Code R-14051	*Order No. 12,807.24 Acres
-----------------------------------	---	-------------------------------	---------------------------------------	--------------------------------------

NO ALLOWABLE WILL BE ASSIGNED TO THIS COMPLETION
UNTIL ALL INTERESTS HAVE BEEN CONSOLIDATED OR A
NON-STANDARD UNIT HAS BEEN APPROVED BY THE DIVISION



17 OPERATOR CERTIFICATION
I hereby certify that the information contained herein is true and complete to the best of my knowledge and belief, and that this organization either owns a working interest or unleased mineral interest in the land including the proposed bottom-hole location or has a right to drill this well at this location pursuant to a contract with an owner of such a mineral or working interest, or to a voluntary pooling agreement or a compulsory pooling order heretofore entered by the Division.

Signature Marie E. Jaramillo Date 3-8-17
Printed Name Marie E. Jaramillo
E-mail Address marie.jaramillo@wpenergy.com

18 SURVEYOR CERTIFICATION
I hereby certify that the well location shown on this plat was plotted from field notes of actual surveys made by me or under my supervision, and that the same is true and correct to the best of my belief.

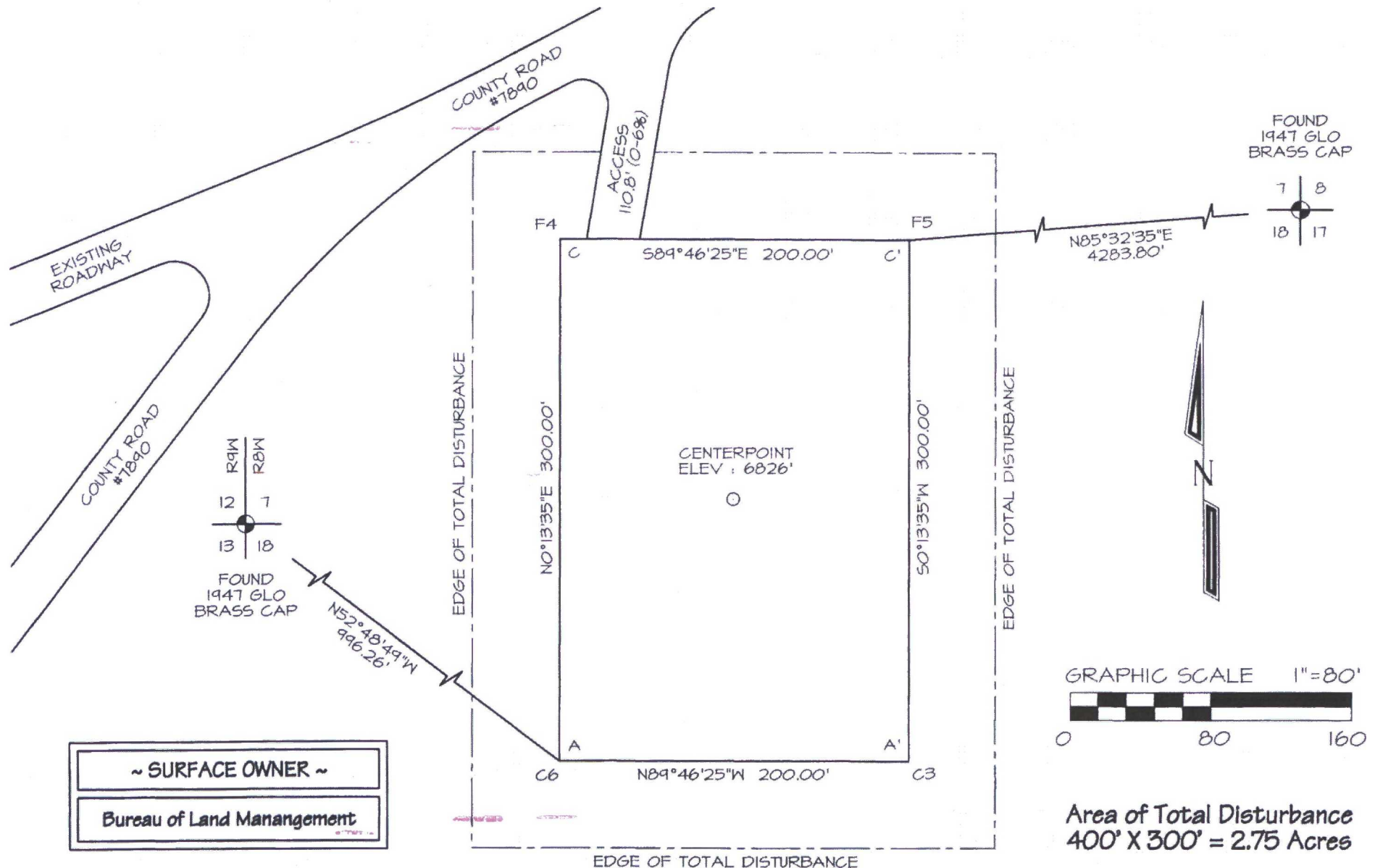
Date Revised: MARCH 24, 2016
Date of Survey: MAY 18, 2015

Signature and Seal of Professional Surveyor



JASON C. EDWARDS
Certificate Number 15269

WPX ENERGY PRODUCTION, LLC WLU REMOTE #2
 451' FNL, 896' FWL, SECTION 18, T23N, R8W
 SAN JUAN COUNTY, NEW MEXICO ELEVATION: 6826'
 LAT: 36.232985°N LONG: 107.728379°W DATUM: NAD1983



Steel T-Posts

to define Edge of Disturbance limits which are 50' offset from edge of remote facilities pad.

1	Oil – 500 Bbl
2	Oil – 500 Bbl
3	BGT
4	Oil – 500 Bbl
5	Oil – 500 Bbl
6	Condensate – 400 Bbl
7	Oil – 500 Bbl
8	Oil – 500 Bbl
9	Oil – 500 Bbl
10	Oil – 500 Bbl
11	Flash – 750 Bbl
12	Water – 500 Bbl

West Lybrook Unit NMNM-135216A

W Lybrook UT #705H
API # 30-045-35748

W Lybrook UT #706H
API # 30-045-35749

W Lybrook UT #745H
API # 30-045-35750

W Lybrook UT #746H
API # 30-045-35751

1) Long Term Disturbance = 0.79 Acres

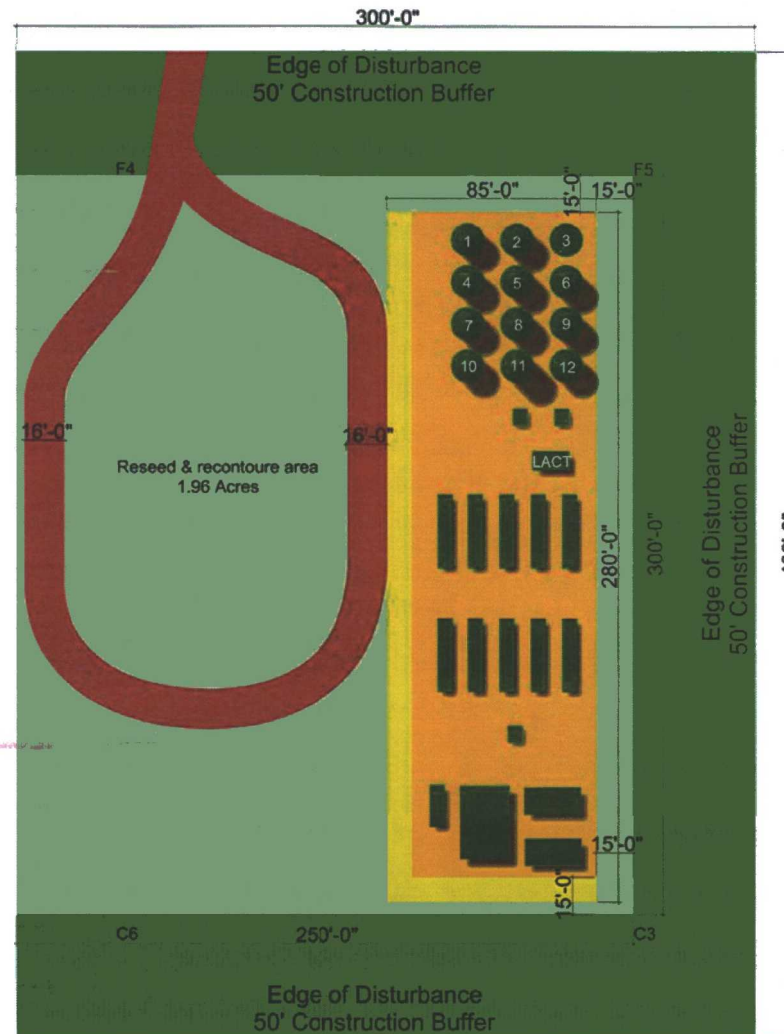
a. Facilities = 0.55 Acres

b. Access Road = 0.24 Acres

3) Reseed & Recontour Area = 1.96 Acres

Total Disturbance Area = 2.75 Acres

WPX Energy Production, LLC WLU Remote #2 Facility Diagram Section 18, T23N, R8W, NMPM San Juan County, New Mexico



West Lybrook Unit NMNM-135216A

W Lybrook UT #707H
API # 30-045-35739

W Lybrook UT #708H
API # 30-045-35740

W Lybrook UT #709H
API # 30-045-35741

W Lybrook UT #747H
API # 30-045-35742

W Lybrook UT #748H
API # 30-045-35743

W Lybrook UT #749H
API # 30-045-35744



75'-0"

1" = 75'

Casey Haga

From: Ernie Johnson <ernie.johnson@whiptailmidstream.com>
Sent: Wednesday, March 08, 2017 4:22 PM
To: Felix, Andrea
Cc: Jude Dysart; Bob O'Neal; caseyhaga@eis-llc.com; VanDenBerg, Randy
Subject: Whiptail letter for WPX Remote 2

Andrea,

Whiptail Midstream, LLC agrees with the plan of allowing WPX Energy Production, LLC to utilize LACT units as the sales point on our pipeline system for the below listed facilities as long as, these LACT units will be proved per regulatory requirements.

- WLU Remote #2

If you have any questions please feel free to contact me.

Thank you,

Ernie Johnson

HSE Manager

Whiptail Midstream

O: (918) 289-2147

C: (918) 949-7580

ernie.johnson@whiptailmidstream.com



Casey Haga

From: Ernie Johnson <ernie.johnson@whiptailmidstream.com>
Sent: Monday, March 27, 2017 1:00 PM
To: Felix, Andrea
Cc: Jude Dysart; Bob O'Neal; caseyhaga@eis-llc.com; VanDenBerg, Randy
Subject: RE: [EXTERNAL] Whiptail letter for WPX Remote 2

Andrea,

Thank you for the update. As the manager of EHS, and Regulatory & Permitting, for Whiptail Midstream, LLC, Whiptail Midstream agrees with the plan of allowing WPX Energy Production, LLC to utilize LACT units as the sales point on our pipeline system for the below listed facilities. So long as these LACT units will be proved per regulatory requirements.

WLU REMOTE #1 PIPELINE LACT UNIT

WELLS TO BE SERVED BY PIPELINE LACT UNIT:

- W Lybrook Unit 701H / API #30-045-35725 / UNIT M (SW/SW) Sec. 9, T23N, R8W, NMPPM
- W Lybrook Unit 702H / API #30-045-35726 / UNIT M (SW/SW) Sec. 9, T23N, R8W, NMPPM
- W Lybrook Unit 703H / API #30-045-35727 / UNIT N (SE/SW) Sec. 8, T23N, R8W, NMPPM
- W Lybrook Unit 704H / API #30-045-35728 / UNIT M (SW/SW) Sec. 8, T23N, R8W, NMPPM
- W Lybrook Unit 711H / API #30-045-35809 / UNIT N (SE/SW) Sec. 8, T23N, R8W, NMPPM
- W Lybrook Unit 713H / API #30-045-35808 / UNIT N (SE/SW) Sec. 8, T23N, R8W, NMPPM
- W Lybrook Unit 743H / API #30-045-35729 / UNIT N (SE/SW) Sec. 8, T23N, R8W, NMPPM
- W Lybrook Unit 744H / API #30-045-35730 / UNIT M (SW/SW) Sec. 8, T23N, R8W, NMPPM

WLU REMOTE #2 PIPELINE LACT UNIT

WELLS TO BE SERVED BY PIPELINE LACT UNIT:

- W Lybrook Unit 705H / API #30-045-35748 / UNIT O (SW/SE) Sec. 7, T23N, R8W, NMPPM
- W Lybrook Unit 706H / API #30-045-35749 / UNIT O (SW/SE) Sec. 7, T23N, R8W, NMPPM
- W Lybrook Unit 707H / API #30-045-35739 / UNIT P (SE/SE) Sec. 12, T23N, R9W, NMPPM
- W Lybrook Unit 708H / API #30-045-35740 / UNIT P (SE/SE) Sec. 12, T23N, R9W, NMPPM
- W Lybrook Unit 709H / API #30-045-35741 / UNIT P (SE/SE) Sec. 12, T23N, R9W, NMPPM
- W Lybrook Unit 745H / API #30-045-35750 / UNIT O (SW/SE) Sec. 7, T23N, R8W, NMPPM
- W Lybrook Unit 746H / API #30-045-35751 / UNIT O (SW/SE) Sec. 7, T23N, R8W, NMPPM
- W Lybrook Unit 747H / API #30-045-35742 / UNIT P (SE/SE) Sec. 12, T23N, R9W, NMPPM
- W Lybrook Unit 748H / API #30-045-35743 / UNIT P (SE/SE) Sec. 12, T23N, R9W, NMPPM
- W Lybrook Unit 749H / API #30-045-35744 / UNIT P (SE/SE) Sec. 12, T23N, R9W, NMPPM

If you have any questions please feel free to contact me.

Thank you,

Ernie Johnson
HSE Manager
Whiptail Midstream
15 W. 6th Street, Suite 2901, Tulsa, OK 74119
W: 918.289.2147
ernie.johnson@whiptailmidstream.com

OIL CONS. DIV DIST. 3

MAR 28 2017