

Submit 1 Copy To Appropriate District Office
District I - (575) 393-6161
1625 N. French Dr., Hobbs, NM 88240
District II - (575) 748-1283
811 S. First St., Artesia, NM 88210
District III - (505) 334-6178
1000 Rio Brazos Rd., Aztec, NM 87410
District IV - (505) 476-3460
1220 S. St. Francis Dr., Santa Fe, NM 87505

State of New Mexico
Energy, Minerals and Natural Resources

OIL CONSERVATION DIVISION
1220 South St. Francis Dr.
Santa Fe, NM 87505

Form C-103
Revised July 18, 2013

SUNDRY NOTICES AND REPORTS ON WELLS (DO NOT USE THIS FORM FOR PROPOSALS TO DRILL OR TO DEEPEN OR PLUG BACK TO A DIFFERENT RESERVOIR. USE "APPLICATION FOR PERMIT" (FORM C-101) FOR SUCH PROPOSALS.)		WELL API NO. 30-045-32316
1. Type of Well: Oil Well <input type="checkbox"/> Gas Well <input checked="" type="checkbox"/> Other		5. Indicate Type of Lease STATE <input type="checkbox"/> FEE <input checked="" type="checkbox"/>
2. Name of Operator BP America Production Company		6. State Oil & Gas Lease No.
3. Address of Operator 501 Westlake Park Blvd., Three Eldridge Place, 12.181A Houston, TX 77079		7. Lease Name or Unit Agreement Name Best Gas Com
4. Well Location Unit Letter P : 840 feet from the South line and 1040 feet from the East line Section 21 Township 32N Range 10W NMPM County San Juan		8. Well Number 1M
11. Elevation (Show whether DR, RKB, RT, GR, etc.) 5917'		9. OGRID Number 000778
		10. Pool name or Wildcat Basin Dakota, Blanco-Mesaverde

12. Check Appropriate Box to Indicate Nature of Notice, Report or Other Data

NOTICE OF INTENTION TO:

PERFORM REMEDIAL WORK ☐ PLUG AND ABANDON ☐
TEMPORARILY ABANDON ☐ CHANGE PLANS ☐
PULL OR ALTER CASING ☐ MULTIPLE COMPL ☐
DOWNHOLE COMMINGLE ☒
CLOSED-LOOP SYSTEM ☒
OTHER: Re-Perforate-Fracture Stimulate MV, P&A Dakota ☒

SUBSEQUENT REPORT OF:

REMEDIAL WORK ☐ ALTERING CASING ☐
COMMENCE DRILLING OPNS. ☐ P AND A ☐
CASING/CEMENT JOB ☐

OTHER: ☐

13. Describe proposed or completed operations. (Clearly state all pertinent details, and give pertinent dates, including estimated date of starting any proposed work). SEE RULE 19.15.7.14 NMAC. For Multiple Completions: Attach wellbore diagram of proposed completion or recompletion.

BP America Production Company respectfully requests to re-perforate and hydraulically fracture the existing Blanco-Mesaverde formation and P&A the Basin Dakota formation in the subject well.

Please see the attached procedure including wellbore diagrams and C-102 plats.

DHC 1513

OIL CONS. DIV DIST. 3

Spud Date:

09/14/2004

Rig Release Date:

MAY 24 2017

I hereby certify that the information above is true and complete to the best of my knowledge and belief.

SIGNATURE Toya Colvin TITLE Regulatory Analyst DATE 05/23/2017

Type or print name Toya Colvin E-mail address: Toya.Colvin@bp.com PHONE: 281-892-5369

For State Use Only

APPROVED BY: [Signature] TITLE Deputy Oil & Gas Inspector, District #3 DATE 6/2/17

Conditions of Approval (if any):

A

6

BEST GC 1M-MV/DK

API # 300453231600

Location: Unit P - Sec 21 - T32N - R10W

San Juan County, New Mexico

Reason/Background for Job

The proposed work is to pull the current completion, set a plug above DK top perf and place cement above the plug, set a plug above the current Mesaverde, recomplete to the Menefee and Cliff House formations, and return well to production only from Mesaverde formation.

Basic job procedure

1. Pull tubing
2. Set 4-1/2" CIBP @ +/- 7440' KB
3. Place 100' of cement on top of the CIBP to abandon DK
4. RIH and set a 4-1/2" CBP @ 5084'
5. Test casing @ 4270 psi for 30 min (80% of csg burst)
 - Report test to the NMOCD
6. Perforate Menefee formation (+/- 4937' – 5070' KB gross interval)
7. Fracture stimulate MV formation
8. RIH and set a 4-1/2" CBP @ 4932'
9. Perforate Cliff House formation (+/- 4840' – 4915' KB gross interval)
10. Fracture stimulate MV formation
11. Drill out CBP/Clean out to top of cement
12. Run production tubing
13. Land tubing @ +/- 4900' KB
14. Return well to production



BEST GC 001M
MV/DK
API # 30-045-32316
Unit P - Sec. 21 - T32N - R10W
San Juan, NM

Formation Tops (TVD)

Kirtland/Fruitland	2570
Pictured Cliffs	2932
Cliff House	4526
Menefee	4912
Point Lookout	5259
Mancos	5701
Dakota	7314

Current Mesa Verde Perforations

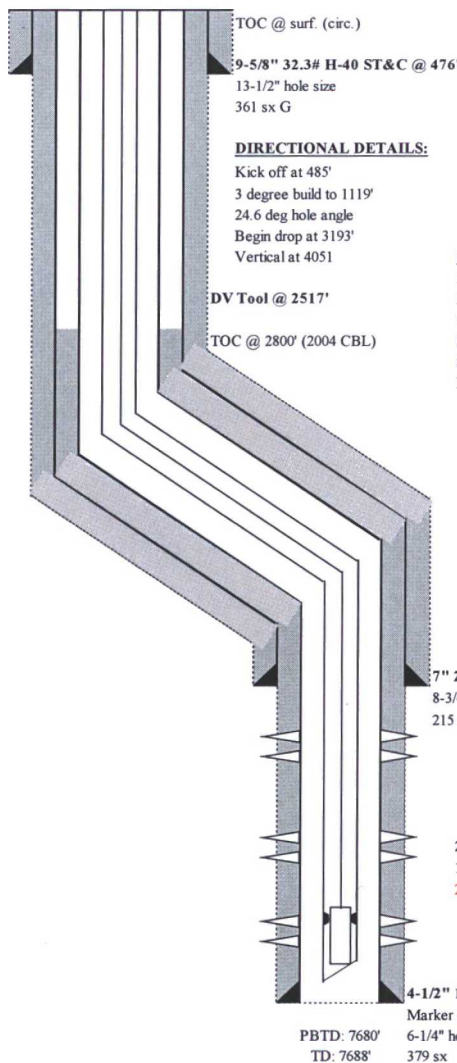
5097' - 5235' 4 jspf
5266' - 5397' 2 jspf
Frac'd w/ 500 gal 15% HCl, 70Q foam, 86.9k# 16/30 sd

Current Dakota Perforations

7453' - 7488' 2 jspf
7507' - 7677' 4 jspf
Broken down w/ 2% KCl water
Frac'd w/ 38.6k# 20/40 sd & 145k gal slickwater

Current WBD

GL: 5917
14' KB



TOC @ surf. (circ.)

9-5/8" 32.3# H-40 ST&C @ 476'
13-1/2" hole size
361 sx G

DIRECTIONAL DETAILS:

Kick off at 485'
3 degree build to 1119'
24.6 deg hole angle
Begin drop at 3193'
Vertical at 4051'

DV Tool @ 2517'

TOC @ 2800' (2004 CBL)

Rods/Pump

	Length
Rods, 0.875", gr. D	2108
Rods, 0.75", gr. D	5225
Guided rod, 0.75", gr. D	25
Sinker bars, 1.25", gr. C	250
Stabilizer pony, 0.75", gr. D	4
Pump, RHAC, 2"x1.25"x20'	20

7" 20# J-55 ST&C @ 3193'
8-3/4" hole size
215 sx G + 355 sx G/POZ

2-3/8" 4.7# J-55 @ 7664'
1.780" ID F-Nipple @ 7633'
2-7/8" 6.5# J-55 poly-lined from 501' - 4232' (114 jts)

4-1/2" 11.6# J-55 LT&C @ 7684'

Marker Jts @ 4150' and 7071'

PBTD: 7680'
TD: 7688'
6-1/4" hole size
379 sx

Well History

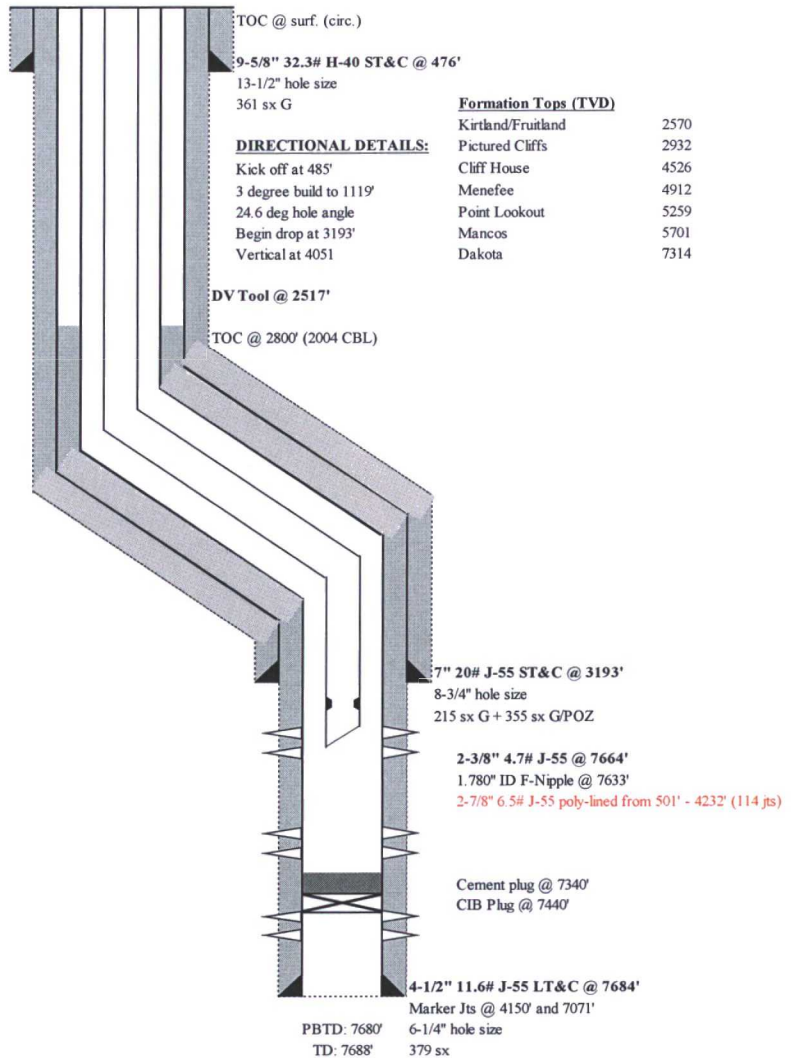
9/19/2004 Spudded well. Completed in the DK & MV.
10/28/2005 Pulled tubing--8k lbs overpull on last 20 stands. C/O w/ air to 7665'. Could not rotate above 7665'. Landed tbg @ 7614'.
11/6/2007 Temporarily abandoned the DK with CIBP set @ 5650'.
1/4/2012 Changed master valve.
5/26/2016 Pulled tubing. Tagged CIBP @ 5725'. Appeared to be pushing CIBP to bottom. C/O to 7670' and d/o to 7680'. Ran tubing, pump/rods.



BEST GC 001M
MV/DK
API # 30-045-32316
Unit P - Sec. 21 - T32N - R10W
San Juan, NM

Proposed WBD

GL: 5917
14' KB



Well History

9/19/2004 Spudded well. Completed in the DK & MV.

10/28/2005 Pulled tubing--8k lbs overpull on last 20 stands. C/O w/ air to 7665'. Could not rotate above 7665'. Landed tbg @ 7614'.

11/6/2007 Temporarily abandoned the DK with CIBP set @ 5650'.

1/4/2012 Changed master valve.

5/26/2016 Pulled tubing. Tagged CIBP @ 5725'. Appeared to be pushing CIBP to bottom. C/O to 7670' and d/o to 7680'. Ran tubing, pump/rods.

District I
1625 N. French Dr., Hobbs, NM 88240
District II
1301 W. Grand Avenue, Artesia, NM 88210
District III
1000 Rio Brazos Rd., Aztec, NM 87410
District IV
1220 S. St. Francis Dr., Santa Fe, NM 87505

State of New Mexico
Energy, Minerals & Natural Resources Department
OIL CONSERVATION DIVISION
1220 South St. Francis Dr.
Santa Fe, NM 87505

Form C-102
Revised July 16, 2010
Submit one copy to appropriate
District Office

☐ AMENDED REPORT

WELL LOCATION AND ACREAGE DEDICATION PLAT

¹ API Number 30-045-32316		² Pool Code 72319		³ Pool Name Blanco-Mesaverde	
⁴ Property Code 014113		⁵ Property Name Best Gas Com			⁶ Well Number 1M
⁷ OGRID No. 000778		⁸ Operator Name BP America Production Company			⁹ Elevation 5917

¹⁰ Surface Location

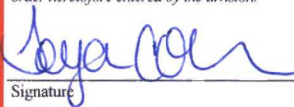
UL or lot no. P	Section 21	Township 32N	Range 10W	Lot Idn	Feet from the 840	North/South line South	Feet from the 1040	East/West line East	County San Juan
--------------------	---------------	-----------------	--------------	---------	----------------------	---------------------------	-----------------------	------------------------	--------------------

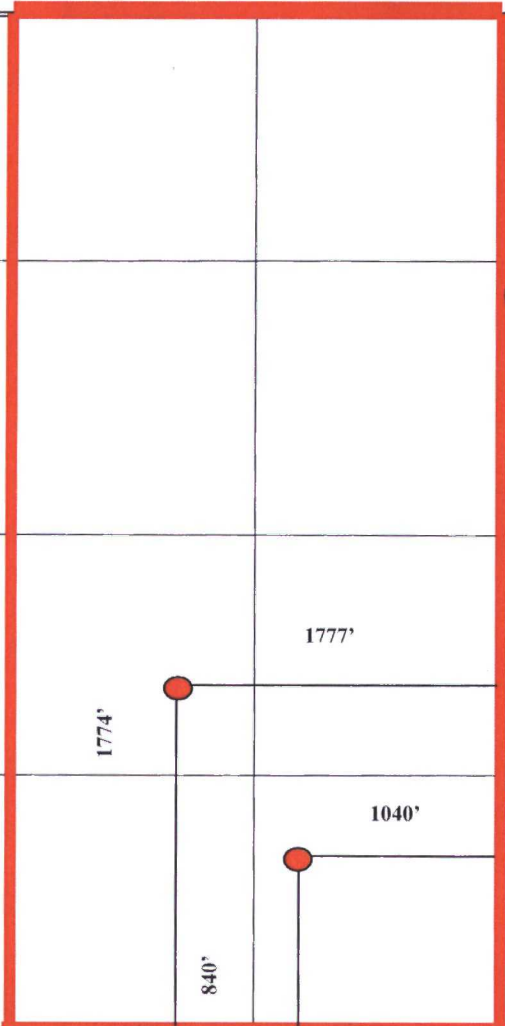
¹¹ Bottom Hole Location If Different From Surface

UL or lot no. J	Section 21	Township 32N	Range 10W	Lot Idn	Feet from the 1774	North/South line South	Feet from the 1777	East/West line East	County San Juan
--------------------	---------------	-----------------	--------------	---------	-----------------------	---------------------------	-----------------------	------------------------	--------------------

¹² Dedicated Acres 319.64	¹³ Joint or Infill	¹⁴ Consolidation Code	¹⁵ Order No. R-11363
---	-------------------------------	----------------------------------	------------------------------------

No allowable will be assigned to this completion until all interests have been consolidated or a non-standard unit has been approved by the division.

¹⁶				<div><p>¹⁷ OPERATOR CERTIFICATION</p><p><i>I hereby certify that the information contained herein is true and complete to the best of my knowledge and belief, and that this organization either owns a working interest or unleased mineral interest in the land including the proposed bottom hole location or has a right to drill this well at this location pursuant to a contract with an owner of such a mineral or working interest, or to a voluntary pooling agreement or a compulsory pooling order heretofore entered by the division.</i></p><p> 5/25/17</p><p>Signature _____ Date _____</p><p>Tova Colvin Printed Name _____</p><p>Tova.Colvin@bp.com E-mail Address _____</p></div>
				<div><p>¹⁸ SURVEYOR CERTIFICATION</p><p><i>I hereby certify that the well location shown on this plat was plotted from field notes of actual surveys made by me or under my supervision, and that the same is true and correct to the best of my belief.</i></p><p>Date of Survey _____</p><p>Signature and Seal of Professional Surveyor: _____</p><p>Previously Filed</p><p>Certificate Number _____</p></div>



District I
1625 N. French Dr., Hobbs, NM 88240
District II
1301 W. Grand Avenue, Artesia, NM 88210
District III
1000 Rio Brazos Rd., Aztec, NM 87410
District IV
1220 S. St. Francis Dr., Santa Fe, NM 87505

State of New Mexico
Energy, Minerals & Natural Resources Department
OIL CONSERVATION DIVISION
1220 South St. Francis Dr.
Santa Fe, NM 87505

Form C-102
Revised July 16, 2010
Submit one copy to appropriate
District Office

☐ AMENDED REPORT

WELL LOCATION AND ACREAGE DEDICATION PLAT

¹ API Number 30-045-32316	² Pool Code 71599	³ Pool Name Basin Dakota
⁴ Property Code 014113	⁵ Property Name Best Gas Com	⁶ Well Number 1M
⁷ OGRID No. 000778	⁸ Operator Name BP America Production Company	⁹ Elevation 5917

¹⁰ Surface Location

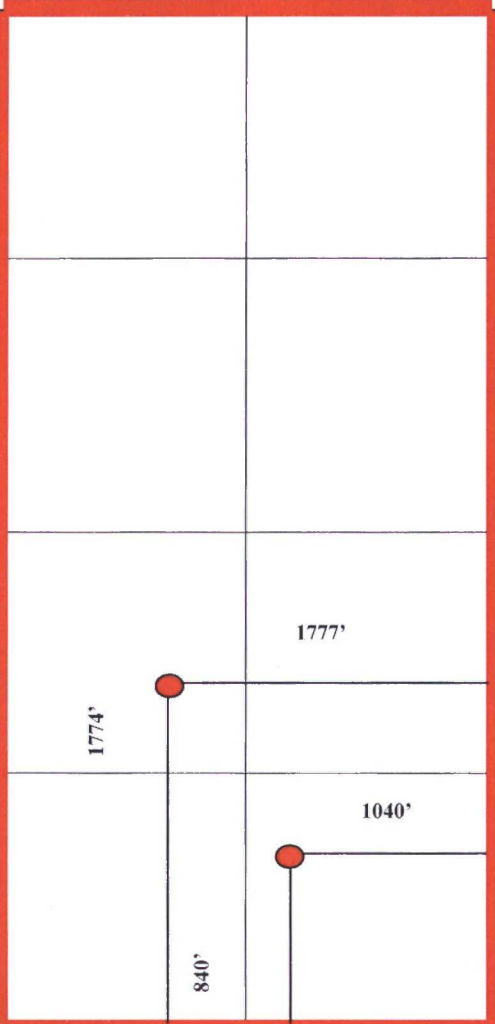
UL or lot no. P	Section 21	Township 32N	Range 10W	Lot Idn	Feet from the 840	North/South line South	Feet from the 1040	East/West line East	County San Juan
---------------------------	----------------------	------------------------	---------------------	---------	-----------------------------	----------------------------------	------------------------------	-------------------------------	---------------------------

¹¹ Bottom Hole Location If Different From Surface

UL or lot no. J	Section 21	Township 32N	Range 10W	Lot Idn	Feet from the 1774	North/South line South	Feet from the 1777	East/West line East	County San Juan
---------------------------	----------------------	------------------------	---------------------	---------	------------------------------	----------------------------------	------------------------------	-------------------------------	---------------------------

¹² Dedicated Acres 319.64	¹³ Joint or Infill	¹⁴ Consolidation Code	¹⁵ Order No. R-11363
--	-------------------------------	----------------------------------	---

No allowable will be assigned to this completion until all interests have been consolidated or a non-standard unit has been approved by the division.

¹⁶					<p>¹⁷ OPERATOR CERTIFICATION <i>I hereby certify that the information contained herein is true and complete to the best of my knowledge and belief, and that this organization either owns a working interest or unleased mineral interest in the land including the proposed bottom hole location or has a right to drill this well at this location pursuant to a contract with an owner of such a mineral or working interest, or to a voluntary pooling agreement or a compulsory pooling order heretofore entered by the division.</i></p> <p><i>Toya Colvin</i> 5/25/17 Signature Date</p> <p>Toya Colvin Printed Name</p> <p>Toya.Colvin@bp.com E-mail Address</p>
					<p>¹⁸ SURVEYOR CERTIFICATION <i>I hereby certify that the well location shown on this plat was plotted from field notes of actual surveys made by me or under my supervision, and that the same is true and correct to the best of my belief.</i></p> <p>Date of Survey Signature and Seal of Professional Surveyor:</p> <p>Previously Filed</p>
					Certificate Number