

RECEIVED

Form 3160-5
(June 2015)UNITED STATES
DEPARTMENT OF THE INTERIOR
BUREAU OF LAND MANAGEMENTFORM APPROVED
OMB No. 1004-0137
Expires: January 31, 2018

SUNDRY NOTICES AND REPORTS ON WELLS
Do not use this form for proposals to drill or to re-enter an abandoned well. Use Form 3160-3 (APD) for such proposals.

Farmington Field Office
Bureau of Land Management

5. Lease Serial No.

NMSF 078767

6. If Indian, Allottee or Tribe Name

SUBMIT IN TRIPLICATE - Other instructions on page 2

7. If Unit of CA/Agreement, Name and/or No.
NMNM 78407E

1. Type of Well

☐ Oil Well☒ Gas Well☐ Other

OIL CONS. DIV DIST. 3

8. Well Name and No.

Rosa Unit 116

2. Name of Operator

WPX Energy Production, LLC

9. API Well No.

30-039-23484

3a. Address

PO Box 640 Aztec, NM 87410

3b. Phone No. (include area code)

505-333-1816

10. Field and Pool or Exploratory Area
Basin Mancos

4. Location of Well (Footage, Sec., T., R., M., or Survey Description)

1050' FNL & 790' FEL Sec 24, T 31N, R6W

11. Country or Parish, State
Rio Arriba, NM

12. CHECK THE APPROPRIATE BOX(ES) TO INDICATE NATURE OF NOTICE, REPORT OR OTHER DATA

TYPE OF SUBMISSION	TYPE OF ACTION			
<input type="checkbox"/> Notice of Intent	<input type="checkbox"/> Acidize	<input type="checkbox"/> Deepen	<input type="checkbox"/> Production (Start/Resume)	<input type="checkbox"/> Water Shut Off
<input checked="" type="checkbox"/> Subsequent Report	<input type="checkbox"/> Alter Casing	<input type="checkbox"/> Hydraulic Fracturing	<input type="checkbox"/> Reclamation	<input type="checkbox"/> Well Integrity
<input type="checkbox"/> Final Abandonment Notice	<input type="checkbox"/> Casing Repair	<input type="checkbox"/> New Construction	<input type="checkbox"/> Recomplete	<input type="checkbox"/> Other <u>Plug &</u>
	<input type="checkbox"/> Change Plans	<input type="checkbox"/> Plug and Abandon	<input type="checkbox"/> Temporarily Abandon	<u>Abandoned</u>
	<input type="checkbox"/> Convert to Injection	<input type="checkbox"/> Plug Back	<input type="checkbox"/> Water Disposal	

13. Describe Proposed or Completed Operation: Clearly state all pertinent details, including estimated starting date of any proposed work and approximate duration thereof. If the proposal is to deepen directionally or recompleat horizontally, give subsurface locations and measured and true vertical depths of all pertinent markers and zones. Attach the Bond under which the work will be performed or provide the Bond No. on file with BLM/BIA. Required subsequent reports must be filed within 30 days following completion of the involved operations. If the operation results in a multiple completion or recompleat in a new interval, a Form 3160-4 must be filed once testing has been completed. Final Abandonment Notices must be filed only after all requirements, including reclamation, have been completed and the operator has detennined that the site is ready for final inspection.)

This well was plug and abandoned on 5/22/17

5/17/17- MIRU. Test BOP 1600# 15 min w/ no lk off, bleed off pressure- good, Pull tbg hanger, tally 2-3/8' 4.7# tbg on TOO, TIH & retrieve RBP @ 6590', TOO w/ RBP, SIW, SDFN

5/18/17- PSI check: SCIP=0 BH=0. Load hole w/ 38 bbls fresh water, RU Basin WL, run CBL in 4.5" 11.6# f/ 6680' to surface. TIH w/ 2-3/8' 4.7# work string
 Plug #1: balanced plug 6680' - 6519' (161' cmt plug inside 4.5" csg), 12 sxs class b cmt w/ 2% CaCl₂, 1.18 yield, 1.5bbls mix water, pump 2.5 bbls cmt, displ w/ 25.2 bbls fresh water, 2 bpm @ 500 psi, SD, RD cementers. TOO, LD 3 jts, pulled 4th jt up. Continue TOO LD tbg to 6372', RU cementers, est rev circ, 8 bbls to load hole, pump 47 bbls & circ out .25 bbls cmt, SD, RD cementers. SDFN

5/19/17- Current depth 6372'. PSI check: SCIP=0 BH=0.

TIH & tag top of cmt plug #1, TOC @ 6566', TOO LD 2-3/8" tbg to 6165', est circ w/ fresh water, 34 bbls to load hole

Plug #2: balanced plug 6165' - 6004' (161' cmt plug inside 4.5" csg), 12 sxs class B neat cmt w/ 2% CaCl₂, 1.18 yield, 1.5 bbls mix water, pump 2.5 bbls cmt @ 15.6 ppg, displ w/ 23.2 bbls fresh water, 2 bpm @ 460 psi, SD, RD cementers WOC, LD 10 jts to 5839' WOC, rev circ out tbg 2 bpm @ 500#, tbg capacity 22.6 bbls, pumped 40 bbls, SD.

TIH & tag cmt plug #2, TOC @ 6004', TOO LD tbg to 4171', load hole w/ 31 bbls fresh

Plug #3: balanced plug 4170' - 4009' (161' cmt plug inside 4.5" csg), 12 sxs class B neat cmt w/ 2% CaCl₂, 1.18 yield, 1.5 bbls mix water, pump 2.5 bbls cmt @ 15.6 ppg, displ w/ 15.4 bbls fresh water, 2 bpm @ 400 psi, SD, RD cementers. WOC, TOO LD tbg to 3850', rev circ out tbg 2.5 bpm @ 400#, pump 25 bbls, .25 bbls cmt circ out.

TIH & tag plug #3, TOC @ 3998', TOO LD tbg to 2950', SIW, SDFW

ACCEPTED FOR RECORD

14. I hereby certify that the foregoing is true and correct. Name (Printed/Typed)

Lacey Granillo

Title Permit Tech III

Signature

Date 6/1/17

THE SPACE FOR FEDERAL OR STATE OFFICE USE

Approved by

Title

Date

Conditions of approval, if any, are attached. Approval of this notice does not warrant or certify that the applicant holds legal or equitable title to those rights in the subject lease which would entitle the applicant to conduct operations thereon.

Office

Title 18 U.S.C Section 1001 and Title 43 U.S.C Section 1212, make it a crime for any person knowingly and willfully to make to any department or agency of the United States any false, fictitious or fraudulent statements or representations as to any matter within its jurisdiction.

NMOCD

Rosa Unit 116

5/20/17-5/21/17- SD for weekend

5/22/17- PSI check: SCIP=0 BH=0. Continue to TOO H w/ 2-3/8" tbg TIH w/ cmt ret for 4.5" 11.6# csg, set ret @ 2950', pressure tst tbg 800# w/ no lk off, bleed off pressure, sting out of retainer, circ & load hole w/ 35 bbls fresh water. Pressure test 4.5" 11.6# csg 2950 to surface, 650# 20 min w/ no lk off, bleed off pressure, witnessed & approved by BLM rep Bill Diers. Sting into retainer @ 2950', est inj rate below retainer into holes in csg @ 3001' to 3129' 1.3 bpm @ 550#, pumped 7 bbls, SD

Plug #4: below retainer @ 2950', 33 sxs B neat cmt, 1.18 yield, 4 bbls mix water, pump 5.3 bbls cmt @ 15.6 ppg below retainer (25 sxs) 2 bpm @ 300#, sting out of retainer & spot cmt plug on top of retainer 2950' - 2840' (8 sxs) 1.7 bbls cmt @ 15.6 ppg, displ w/ 11 bbls frsh water, SD, RD cementers

TOOH LD 2-3/8" tbg to 2565', rev circ tbg w/ 12 bbls, circ ot .25 bbls cmt. TOO H w/ stinger. TIH w/ 2-3/8" tbg open ended

Plug #5: balanced plug 2565' - 2335' (230' cmt plug inside 4.5" csg), 17 sxs class B neat cmt, 1.18 yield, 2.1 bbls mix water, pump 3.6 bbls cmt @ 15.6 ppg, displ w/ 9 bbls fresh water, 2.5 bpm @ 300 psi, SD, RD cementers

TOOH LD 2-3/8" tbg to 1130'

Plug #6: balanced plug 1130' - 969' (161' cmt plug inside 4.5" csg), 12 sxs class B neat cmt, 1.18 yield, 1.5 bbls mix water, pump 2.5 bbls cmt @ 15.6 ppg, displ w/ 3.75 bbls fresh water, 3 bpm @ 100 psi, SD, RD cementers. TOO H LD 2-3/8" tbg to 460'

Plug #7: balanced plug 460' - surface' (460' cmt plug inside 4.5" csg), 36 sxs class B neat cmt, 1.18 yield, 4.5 bbls mix water, pump 7 bbls cmt @ 15.6 ppg, 1.5 bpm @ 50 psi, circ good cmt to pit, RD cementers. TOO H LD 2-3/8" tbg, top off 4.5" 11.6# csg w/ .5 bbls cmt @ 15.6 ppg. RD floor, NDBOP

Plug #8: fill 11-3/4" x 4.5" annulus w/ 72 sxs B neat cmt, 1.18 yield, 9 bbls mix water, pump 15.2 bbls cmt @ 15.6 ppg, to fill inside 11-3/4" csg & out side 4.5" csg 153' to surface
Jack hammer out sand stone around WH & dig out for cut off, welder cut off WH, RD WOR, no cmt between 11-3/4" csg & 4.5" csg, welder install P&A marker & cut 2 - 2" holes in top plate per BLM rep Bill Diers. SDFN

5/23/17- AWS cementers top off 11-3/4" x 4.5" annulus w/ 2 sxs cement, 1.18 yield, .2 bbls mix water, .5 bbls cmt per BLM rep instructions, cementers wash pump truck, off loc

ROSA UNIT #116 MV **P&A'd**

Location: 1050' FNL, 790' FEL
NE/4 NE/4 Section 24(A), T31N, R6W
Rio Arriba Co., NM

Elevation: 6280' GR

API # 30-039-23484

Spud Date 07-24-84
Completed 09-19-84
ID'd 11-11-86
DK Plug Back: 5/6/16

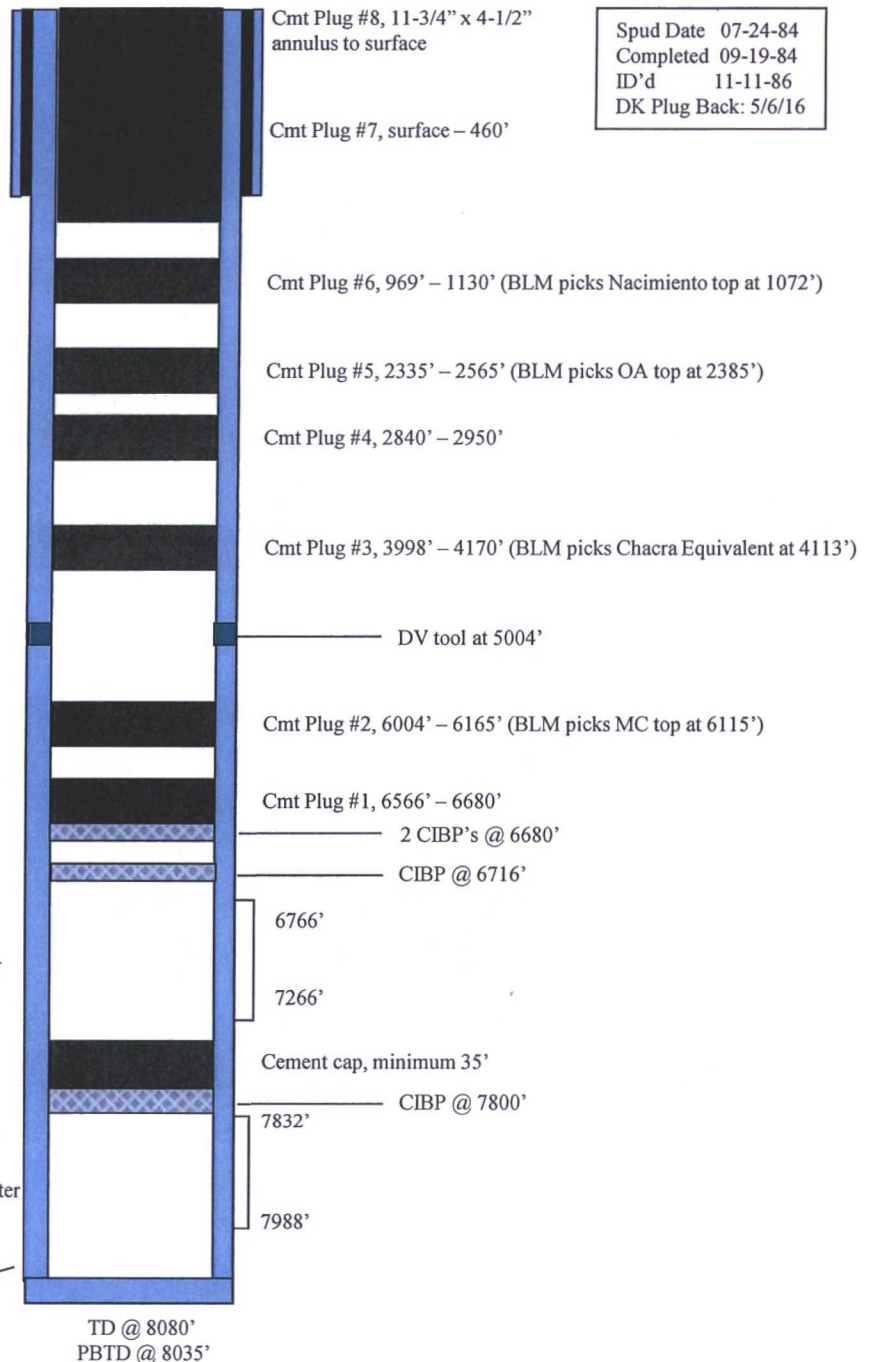
11 jts of 11-3/4", 42#, H-40 ST&C csg.
Set @ 402'

<i>Tops</i>	<i>Depth</i>
Ojo Alamo	2243'
Fruitland	2800'
Pictured Cliffs	3140'
Lewis	3376'
Cliff House	4980'
Menefee	5380'
Point Lookout	5616'
Mancos	5850'
Gallup	6360'
Santosee	7299'
Greenhorn	7646'
Graneros	7703'
Dakota	7821'

Gallup 6766' - 7266'
(450, 0.39" holes)
130,000 gal 50# linear
gel and 160,000#
20/40 sand

Dakota 7832' - 7988'
(328, 0.41" holes)
112,896 gal gelled water
and 147,000# 20/40
sand.

198 jts of 4-1/2", 11.6# N-80 LT&C csg.
Set @ 8080'



<i>HOLE SIZE</i>	<i>CASING</i>	<i>CEMENT</i>	<i>CMT TOP</i>
15"	11-3/4"	350 sx	Surface
7-7/8"	4-1/2"	1855 sx	Surface