

RECEIVED

JUN 21 2017

Form 3160-5  
(June 2015)

UNITED STATES  
DEPARTMENT OF THE INTERIOR  
BUREAU OF LAND MANAGEMENT  
Palmington Field Office  
Bureau of Land Management

FORM APPROVED  
OMB No. 1004-0137  
Expires: January 31, 2018

**SUNDRY NOTICES AND REPORTS ON WELLS**  
*Do not use this form for proposals to drill or to re-enter an abandoned well. Use Form 3160-3 (APD) for such proposals.*

5. Lease Serial No.  
**NMNM109398**  
6. If Indian, Allottee or Tribe Name

**SUBMIT IN TRIPLICATE** - Other instructions on page 2

1. Type of Well  
☒ Oil Well ☐ Gas Well ☐ Other

7. If Unit of CA/Agreement, Name and/or No.

2. Name of Operator  
**WPX Energy Production, LLC**

8. Well Name and No.  
**Logos #5**

3a. Address  
**PO Box 640 Aztec, NM 87410**

3b. Phone No. (include area code)  
**505-333-1816**

9. API Well No.  
**30-045-35423**

4. Location of Well (Footage, Sec., T., R., M., or Survey Description)  
**SHL: 671° FSL & 973° FEL SEC 4 23N 8W**

10. Field and Pool or Exploratory Area  
**Basin Mancos / Basin Dakota**

11. Country or Parish, State  
**San Juan, NM**

12. CHECK THE APPROPRIATE BOX(ES) TO INDICATE NATURE OF NOTICE, REPORT OR OTHER DATA

TYPE OF SUBMISSION	TYPE OF ACTION			
<input checked="" type="checkbox"/> Notice of Intent	<input type="checkbox"/> Acidize	<input type="checkbox"/> Deepen	<input type="checkbox"/> Production (Start/Resume)	<input type="checkbox"/> Water Shut Off
<input type="checkbox"/> Subsequent Report	<input type="checkbox"/> Alter Casing	<input type="checkbox"/> Hydraulic Fracturing	<input type="checkbox"/> Reclamation	<input type="checkbox"/> Well Integrity
<input type="checkbox"/> Final Abandonment Notice	<input type="checkbox"/> Casing Repair	<input type="checkbox"/> New Construction	<input type="checkbox"/> Recomplete	<input type="checkbox"/> Other <u>Plug and Abandon</u>
	<input type="checkbox"/> Change Plans	<input type="checkbox"/> Plug and Abandon	<input type="checkbox"/> Temporarily Abandon	
	<input type="checkbox"/> Convert to Injection	<input type="checkbox"/> Plug Back	<input type="checkbox"/> Water Disposal	

13. Describe Proposed or Completed Operation: Clearly state all pertinent details, including estimated starting date of any proposed work and approximate duration thereof. If the proposal is to deepen directionally or recompleat horizontally, give subsurface locations and measured and true vertical depths of all pertinent markers and zones. Attach the Bond under which the work will be performed or provide the Bond No. on file with BLM/BIA. Required subsequent reports must be filed within 30 days following completion of the involved operations. If the operation results in a multiple completion or recompleat in a new interval, a Form 3160-4 must be filed once testing has been completed. Final Abandonment Notices must be filed only after all requirements, including reclamation, have been completed and the operator has detennined that the site is ready for final inspection.)

WPX Energy requests to plug and abandon the above well per attached procedure and wellbore diagrams.

OIL CONS. DIV DIST. 3

Reclamation inspection/onsite was conducted on 6/15/17 with Randy McKee. Attached is the reclamation report.

JUN 27 2017

SEE ATTACHED FOR  
CONDITIONS OF APPROVAL

BLM'S APPROVAL OR ACCEPTANCE OF THIS ACTION DOES NOT RELIEVE THE LESSEE AND OPERATOR FROM OBTAINING ANY OTHER AUTHORIZATION REQUIRED FOR OPERATIONS ON FEDERAL AND INDIAN LANDS

Notify NMOCD 24 hrs prior to beginning operations

14. I hereby certify that the foregoing is true and correct. Name (Printed/Typed)  
**Lacey Granillo**

Title **Permit Tech III**

Signature

Date **6/22/17**

THE SPACE FOR FEDERAL OR STATE OFFICE USE

Approved by **AG Emadani**

Title **PE**

Date **6/26/17**

Conditions of approval, if any, are attached. Approval of this notice does not warrant or certify that the applicant holds legal or equitable title to those rights in the subject lease which would entitle the applicant to conduct operations thereon.

Office **FFO**

Title 18 U.S.C Section 1001 and Title 43 U.S.C Section 1212, make it a crime for any person knowingly and willfully to make to any department or agency of the United States any false, fictitious or fraudulent statements or representations as to any matter within its jurisdiction.

NMOCD AV

7

JUN 27 2017

## Wellbore Diagram

Logos #5

API #: 3004535423

San Juan, New Mexico

### Surface Casing

9-5/8" 36# @ 343 ft

### Plug 7

343 ft - Surface  
130 sks of Class G

### Plug 6

1214 ft - 850 ft  
364 ft plug  
42 sks of Class G

### Plug 5

1740 ft - 1585 ft  
155 ft plug  
18 sks of Class G

### Plug 4

2050 ft - 1900 ft  
150 ft plug  
18 sks of Class G

### Plug 3

3200 ft - 3000 ft  
200 ft plug  
23 sks of Class G

### Plug 2

4200 ft - 3940 ft  
260 ft plug  
30 sks of Class G

### Plug 1

4765 ft - 4715 ft  
50 ft plug  
6 sks of Class G

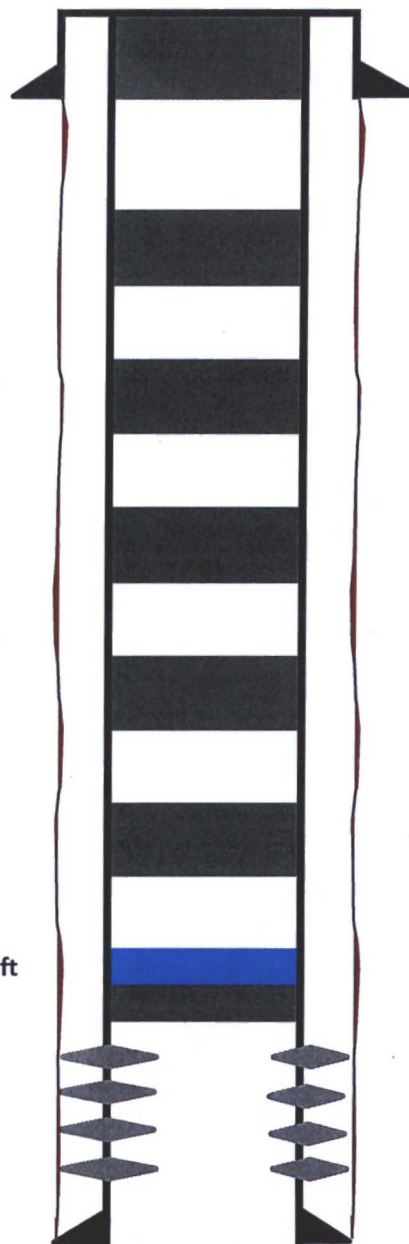
### Formation

Ojo Alamo - 950 feet  
Kirtland - 1164 feet  
Fruitland Coal - 1685 feet  
Pictured Cliffs - 1690 feet  
Cliffhouse - 3100 feet  
Menefee - 3150 feet  
Point Look Out - 4040 feet  
Mancos - 4150 feet  
Gallup - 5040 feet  
Greenhorn - 5972 feet  
Dakota - 6100 feet

Retainer Set at 4765 ft

### Production Casing

5.5" 17# K-55 @ 6435 ft



Location: P-04-23N-08W 671 FSL 973 FEL

County: San Juan

### Logos #5

API: 30-045-35423

Elevation: 6867'

Spud Date: 1/30/2013

Completed: 3/12/2013

Last updated: 1/31/17 BS

RIH With Tubing as Follows

Purge Valve @ 5,070'

4 Jnts 2 3/8s Tubing

8' Sand Screen

Seat Nipple @ 4,940'

4 Jnts Of 2 3/8s Tubing

Tubing Anchor @ 4,810'

148 Jnts Of 2 3/8s Tubing

Landed in 12K Tension

5,070' EOT

RIH With Rods As Follows

192 2-3/8s Rods

1 K Bar

1 Stabilizer

1 K Bar

1 Stabilizer

1 K Bar

1 Stabilizer

1 K Bar

2 8' Pup

1 4' Pup

1 2- 3/8s Pump Landed @

4,940'

Surface Casing:

9-5/8" 36# J-55

Set at 343'

162 cu.ft.

Circ to surf

Production Casing:

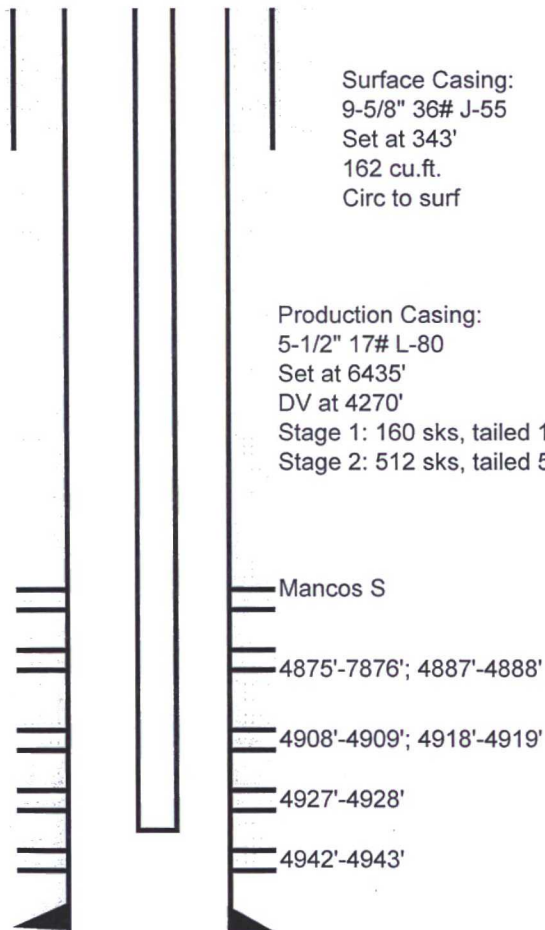
5-1/2" 17# L-80

Set at 6435'

DV at 4270'

Stage 1: 160 sks, tailed 168 sks

Stage 2: 512 sks, tailed 50 sks



PBTD: 6390'

TD: 6443'

OIL CONS. DIV DIST. 3  
JUN 27 2017



# **WPX Energy LLC**

## **Plug And Abandonment Procedure**

### **Logos #5**

671' FSL & 973' FEL, Section 4(P), T23N, R8W

San Juan County, NM / API 30-045-35423

1. Hold pre-job safety meeting. Comply with all NMOCD, BLM safety and environmental regulations. Test rig anchors prior to moving in rig if not rigged to base beam. Call in notification 24 hours prior to moving rig onto location to NMOCD and BLM.
2. Check casing, tubing, and bradenhead pressures.
3. Remove existing piping on casing valve. RU blow lines from casing valves and begin blowing down casing pressure. Kill well as necessary. Ensure well is dead or on a vacuum.
4. ND wellhead and NU BOP. Function test BOP.
5. P/U 5 ½" bit or casing scraper on 2-3/8" workstring and round trip as deep as possible above top perforation at 4815'.
6. P/U 5 ½" CR, TIH and set CR at +/- 4765'. Pressure test tubing to 1000 psi. Sting out of CR. Load hole, and pressure test casing to 800 psi. If casing does not test, then spot or tag subsequent plugs as appropriate. POOH w/ tubing.
7. Rig up to pump cement down tubing. Pump water to establish rate down tubing.

**NOTE: All Plugs Include 100% excess outside casing and 50% Excess inside casing**

**8. Plug 1 (Mancos Perforations, 4765'-4715', 6 Sacks Class G Cement)**

Mix 6 sx Class G cement and spot a balanced plug inside casing to cover Mancos perforations and formation top.

**9. Plug 2 (Mancos and Point Lookout Formation Tops 4200'-3940', 30 Sacks Class G Cement)**

Mix 30 sx Class G cement and spot a balanced plug inside casing to cover Mancos and Point Lookout formation tops.

**10. Plug 3 (Mesa Verde(Menefee, Cliffhouse) Formation Top 3200'-3000', 23 Sacks Class G Cement)**

Mix 23 sx Class G cement and spot a balanced plug inside casing to cover Mesa Verde(Menefee, Cliffhouse) formation top.

**11. Plug 4 (Chacra Formation Top 2050'-1900', 18 Sacks Class G Cement)**

Mix 18 sx Class G cement and spot a balanced plug inside casing to cover Chacra formation top.

**12. Plug 5 (Pictured Cliffs and Fruitland Formation Tops 1740'-1585', 18 Sacks Class G Cement)**

Mix 18 sx Class G cement and spot a balanced plug inside casing to cover Pictured Cliffs and Fruitland formation tops.

**13. Plug 6 (Kirtland and Ojo Alamo Formation Tops 1214'-850', 42 Sacks Class G Cement)**

Mix 42 sx Class G cement and spot a balanced plug inside casing to cover Kirtland and Ojo Alamo formation tops.

14. Plug 7 (**Surface Shoe and Surface 343'-surface, 130 Sacks Class G Cement**)

Attempt to pressure test the bradenhead annulus to 300 psi; note the volume to load. If BH annulus holds pressure, then establish circulation out casing valve with water. Mix approximately 130 sx cement and spot a balanced plug from 343' to surface, circulate good cement out of casing valve. TOH and LD tubing. Shut well in and WOC. If BH annulus does not test, then perforate at the appropriate depth and attempt to circulate cement to surface filling the casing from 343' and the annulus from the squeeze holes to surface. Shut in well and WOC.

15. ND cementing valves and cut off wellhead. Fill annuli with cement as necessary. Install P&A marker to comply with regulations. Record GPS coordinate for P&A marker on tower report. Photograph P&A marker in place. RD, MOL and restore location per BLM stipulations.

UNITED STATES DEPARTMENT OF THE INTERIOR  
BUREAU OF LAND MANAGEMENT  
FARMINGTON DISTRICT OFFICE  
6251 COLLEGE BLVD.  
FARMINGTON, NEW MEXICO 87402

Attachment to notice of  
Intention to Abandon:

Re: Permanent Abandonment  
Well: Logos #5

CONDITIONS OF APPROVAL

1. Plugging operations authorized are subject to the attached "General Requirements for Permanent Abandonment of Wells on Federal and Indian Lease."

2. Farmington Office is to be notified at least 24 hours before the plugging operations commence (505) 564-7750.

- a) Set Plug #2 (4257'-3960') ft. to cover the top of the Mancos and Point Lookout top. BLM picks top of the Mancos at 4207 ft.
- b) Split Plug #3 TO TWO PLUGS Menefee Plug from (3191'-3091') ft. to cover the Menefee top. BLM picks top of the Menefee top at 3141ft.
  - a. Set the Cliffhouse Plug from (2485'-2385') ft. BLM picks top of the Cliffhouse at 2435' ft.
- c) Split Plug #5 TO TWO PLUGS. Set Pictured Cliff plug from (1690'-1590') ft. To cover the Pictured cliff top. BLM picks top of the Pictured Cliff at 1640' ft.
  - a. Set Fruitland plug from (1411'-1311') ft. BLM picks the top of the Fruitland at 1361' ft.
- d) Set Plug #6 from (1214'-832') ft. to cover Ojo Alamo top. BLM picks the top of the Ojo Alamo top at 882' ft.

You are also required to place cement excesses per 4.2 and 4.4 of the attached General Requirements.

Office Hours: 7:45 a.m. to 4:30 p.m.

OIL CONS. DIV DIST. 3  
JUL 05 2017