

UNITED STATES
DEPARTMENT OF THE INTERIOR
BUREAU OF LAND MANAGEMENTFORM APPROVED
OMB NO. 1004-0137
Expires: January 31, 2018**SUNDRY NOTICES AND REPORTS ON WELLS**
*Do not use this form for proposals to drill or to re-enter an abandoned well. Use form 3160-3 (APD) for such proposals.*5. Lease Serial No.
NMSF080597

6. If Indian, Allottee or Tribe Name

7. If Unit or CA/Agreement, Name and/or No.

SUBMIT IN TRIPLICATE - Other instructions on page 2

1. Type of Well

☐ Oil Well ☐ Gas Well ☒ Other: COAL BED METHANE8. Well Name and No.
GARTNER A 16

2. Name of Operator

BP AMERICA PRODUCTION COMPANY

Contact: TOYA COLVIN

Email: Toya.Colvin@bp.com

9. API Well No.
30-045-28493-00-S1

3a. Address

501 WESTLAKE PARK BLVD. THREE ELDRIDGE PLACE
HOUSTON, TX 77079

3b. Phone No. (include area code)

Ph: 281.892.5369

10. Field and Pool or Exploratory Area
BASIN FRUITLAND COAL

4. Location of Well (Footage, Sec., T., R., M., or Survey Description)

Sec 33 T30N R8W SESW 0940FSL 1650FWL
36.763840 N Lat, 107.683240 W Lon

11. County or Parish, State

SAN JUAN COUNTY, NM

12. CHECK THE APPROPRIATE BOX(ES) TO INDICATE NATURE OF NOTICE, REPORT, OR OTHER DATA

TYPE OF SUBMISSION

TYPE OF ACTION

☐ Notice of Intent☒ Subsequent Report☐ Final Abandonment Notice☐ Acidize☐ Alter Casing☐ Casing Repair☐ Change Plans☐ Convert to Injection☐ Deepen☐ Hydraulic Fracturing☐ New Construction☒ Plug and Abandon☐ Plug Back☐ Production (Start/Resume)☐ Reclamation☐ Recomplete☐ Temporarily Abandon☐ Water Disposal☐ Water Shut-Off☐ Well Integrity☐ Other

13. Describe Proposed or Completed Operation: Clearly state all pertinent details, including estimated starting date of any proposed work and approximate duration thereof. If the proposal is to deepen directionally or recompleat horizontally, give subsurface locations and measured and true vertical depths of all pertinent markers and zones. Attach the Bond under which the work will be performed or provide the Bond No. on file with BLM/BIA. Required subsequent reports must be filed within 30 days following completion of the involved operations. If the operation results in a multiple completion or recompleat in a new interval, a Form 3160-4 must be filed once testing has been completed. Final Abandonment Notices must be filed only after all requirements, including reclamation, have been completed and the operator has determined that the site is ready for final inspection.

Please see the attached P&A operations performed on the subject well July 2017.

OIL CONS. DIV DIST. 3

JUL 24 2017

14. I hereby certify that the foregoing is true and correct.

Electronic Submission #381755 verified by the BLM Well Information System
For BP AMERICA PRODUCTION COMPANY, sent to the Farmington
Committed to AFMSS for processing by ABDELGADIR ELMADANI on 07/21/2017 (17JWS0087SE)

Name (Printed/Typed) TOYA COLVIN

Title REGULATORY ANALYST

Signature (Electronic Submission)

Date 07/19/2017

THIS SPACE FOR FEDERAL OR STATE OFFICE USE

Approved By

ACCEPTED

ABDELGADIR ELMANDANI
Title PETROLEUM ENGINEER

Date 07/21/2017

Conditions of approval, if any, are attached. Approval of this notice does not warrant or certify that the applicant holds legal or equitable title to those rights in the subject lease which would entitle the applicant to conduct operations thereon.

Office Farmington

Title 18 U.S.C. Section 1001 and Title 43 U.S.C. Section 1212, make it a crime for any person knowingly and willfully to make to any department or agency of the United States any false, fictitious or fraudulent statements or representations as to any matter within its jurisdiction.

(Instructions on page 2)

** BLM REVISED ** BLM REVISED ** BLM REVISED ** BLM REVISED ** BLM REVISED **

NMOCD

BP AMERICA
PRODUCTION
COMPANY

Gartner "A" #16
API:30-045-28493

Well Plugging Report

Notified BLM AT 1:00 PM. NMOCD AT 1:05 PM ON 7-6-2017

Activity

07/11/2017

Blow down csg to 0#. Pump 15 bbls. down tbq to kill well. ND wellhead. NU BOP. Shell test BOP, test OK. RU floor and tongs.
PU on tbq. LD tbq hanger. Pooh and tally 46 stands, LD 5 jts. 1- profile nipple and 1-18' tail jt.(97 jts.2 3/8 EUE TBG 3026').
PU 1 5.5" A-Plus string mill. Round trip to 2869'.
PU 1-5.5" WD cement retainer; TIH and set at 2812'. Pressure test tbq to 1000#, held ok. Sting out; load and circulate 5.5" csg clean w/ 70 bbls. Pressure test 5.5" csg to 800# for 30 mins per BLM rep; held ok. Pooh and laydown setting tool.
JSEA. RU A Plus wireline. Run CBL from 2812' to surface; found good cement up to 2110'. Send CBL to appropriate agencies. SIW and secure loc. Wait on orders as per BLM rep.
Travel back to yard.

07/12/2017

Travel to loc.
Service and start equipment. JSEA.
Check PSI on well; 0# on well. PT BH TO 300#; held OK. OK'D by B. Powell w/NMOCD proceed on all inside plugs. OK'D By BLM rep Ron Chavez to proceed on Plug #1 and #2 as inside plugs. Waiting on BLM engineer to review CBL.
Spot **Plug #1** Fruitland top; inside 17 sxs Class B (15.6 ppg, 20.06 cf.) from 2812' to 2710' **Plug#2** Kirtland top; 34 sxs of Class B (15.6 ppg, 40.1 cf.) from 1944' to 2198'.
PUH. Approved by BLM Representative on location to combine Plugs #3 & #4 (surface).
Load csg w/3.5 bbls. Spot **Plug #3** Nacimiento, Casing Shoe, Surface top: inside 105 sxs of Class B (15.6 ppg, 123.9 cf) from 684' to 0' (combined Plug #3 & Plug #4).
Lay down all tbq and wash up equipment. RD tongs and floor
Dig out wellhead; had to break up old cement.
JSEA. Write Hot Work Permit. RU and cut off wellhead w/air saw. TOC at surface in 5.5" csg. Found cement down 7' in annulus. Top off w/2sxs (15-6#) Class B cement. Weld on plate and P&A Marker. LAT. 36.7640 LONG.-107.6838.
RD cementing equip. and rig. Clean up loc.

Gartner A 16
PxA Final Wellbore (as of 7/12/2017)
API: 30-045-28493
 940' FSL, 1650' FWL, Section 33, T-30-N, R-8-W

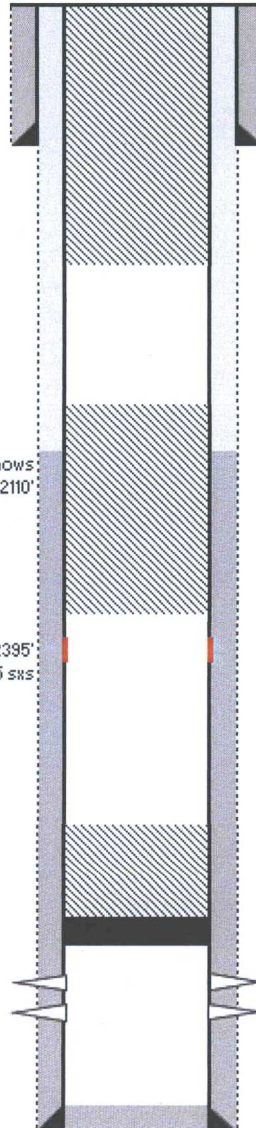
Spud: 12/27/90
 Completed: 2/2/91
 Elevation: 6399' GL

12.25" hole

CBL run 7/11/17 shows
 TOC at 2110'

DV tool @ 2395'
 Stage 2: Cmt w/ 545 sxs

7-7/8" hole



Plug #3: 684-0'
 Class B cmt, 105 sxs

8-5/8", 24# csg set @ 265'
 Cmt w/ 250 sxs, circulated

Plug #2: 2198-1944'
 Class B cmt, 34 sxs

Plug #1: 2812-2710'
 Class B cmt, 17 sxs

Cement Retainer set @ 2812'

Fruitland Coal Perforations:
 2823-3052'

5.5" 17# Csg set @ 3355'
 Stage 1: Cmt w/ 225 sxs

PBD 3318'
 TD 3360'