



August 1, 2017

NMOCD- Aztec District  
Attn: Amy Vermersch  
1000 Rio Brazos Rd  
Aztec, NM 87410

**OIL CONS. DIV DIST. 3**  
**AUG 04 2017**

**Re: Good Times L10 2410 01H Revised C-102**

Dear Amy,

Enclosed you will find two copies of the referenced C-102. The revised C-102 is being submitted to reflect the referenced wellbore's new name (Pinon Unit 307H) and pool allocation (Pinon Unit HZ Oil). This wellbore was previously excluded by the Pinon Unit Agreement (NMNM13381X). The BLM has approved the annexation of the wellbore into the Pinon Unit effective August 1, 2017.

This action a "prospective forward" action. Therefore, royalty revenue and production allocation to the Pinon Unit HZ Oil Pool will commence on the August 1, 2017 effective date and not be allocated retroactively.

Please let me know if you have any questions related to this submission, or if there are any additional documents required from us.

Sincerely,

Matt Strickler  
Vice President of Land  
Juniper Resources, LLC

Enclosure: Pinon Unit 307H as drilled C-102 (formerly Good Times L10 2410 01H)

AV

Submit one copy to  
Appropriate District Office

## OIL CONSERVATION DIVISION

☐ AMENDED REPORT

☒ AS DRILLED

## WELL LOCATION AND ACREAGE DEDICATION PLAT

*API Number 30-045-35442		*Pool Code 98102	*Pool Name PINON UNIT HZ ( OIL )
*Property Code 317565	*Property Name PINON UNIT		*Well Number 307H
*OGRID No. 371654	*Operator Name JUNIPER RESOURCES EXPLORATION CO., LLC		*Elevation 6896'

<sup>10</sup> Surface Location

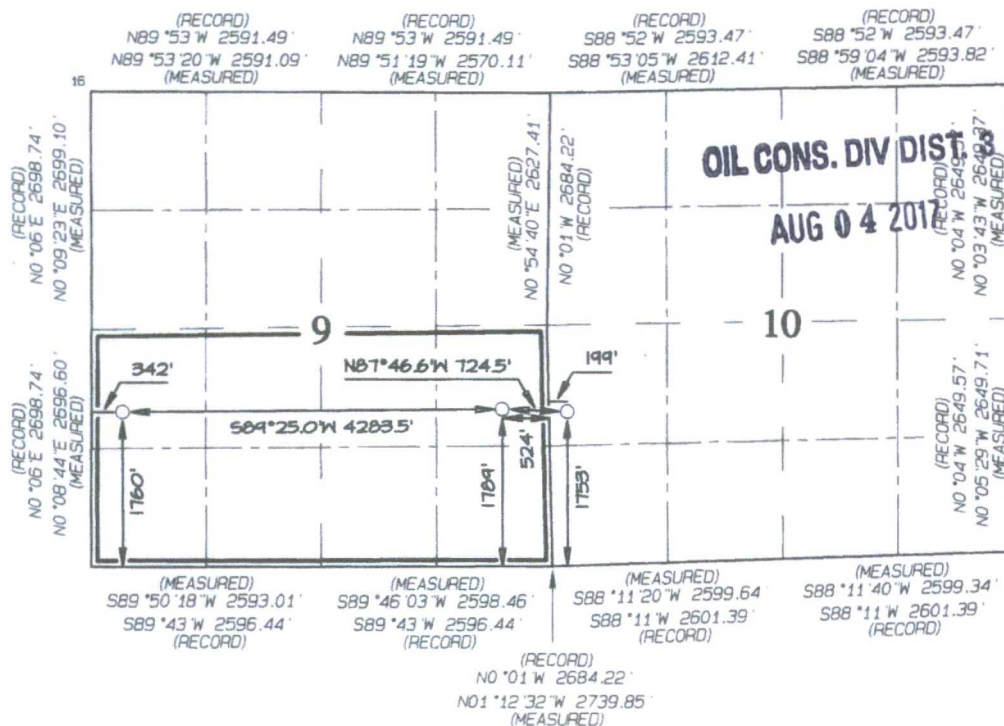
U. or lot no.	Section	Township	Range	Lot Idn	Feet from the	North/South line	Feet from the	East/West line	County
L	10	24N	10W		1753	SOUTH	199	WEST	SAN JUAN

<sup>11</sup> Bottom Hole Location If Different From Surface

UL or lot no.	Section	Township	Range	Lot Idn	Feet from the	North/South line	Feet from the	East/West line	County
L	9	24N	10W		1760	SOUTH	342	WEST	SAN JUAN

<sup>12</sup> Dedicated Acres Penetrated Spacing Unit: S/2 Sec 9 T24N-R10W ( 320.0 Acres )	<sup>13</sup> Joint or Infill	<sup>14</sup> Consolidation Code	<sup>15</sup> Order No. R-13857A ( 8005.44 Acres )
Pinon Unit - Undivided Unit: W/2 Sec 4, All Sec 5-10, 15-18 & 21 N/2 Sec 22 & 28 T24N-R10W ( 8005.44 Acres )	NO ALLOWABLE WILL BE ASSIGNED TO THIS COMPLETION UNTIL ALL INTERESTS HAVE BEEN CONSOLIDATED OR A NON-STANDARD UNIT HAS BEEN APPROVED BY THE DIVISION		

NO ALLOWABLE WILL BE ASSIGNED TO THIS COMPLETION  
UNTIL ALL INTERESTS HAVE BEEN CONSOLIDATED OR A  
NON-STANDARD UNIT HAS BEEN APPROVED BY THE DIVISION



END-OF-LATERAL  
1760' FSL 342' FWL  
SECTION 9, T24N, R10W  
LAT: 36.32556°N  
LONG: 107.90803°W  
DATUM: NAD1927

LAT: 36.32557 \*N  
LONG: 107.90865 \*W  
DATUM: NAD1983

POINT-OF-ENTRY  
1789' FSL 524' FEL  
SECTION 9, T24N, R10W  
LAT: 36.32569°N  
LONG: 107.89349°W  
DATUM: NAD1927

LAT: 36.32570°N  
LONG: 107.89411°W  
DATUM: NAD1983

SURFACE LOCATION  
1753' FSL 199' FWL  
SECTION 10, T24N, R10W  
LAT: 36.32561°N  
LONG: 107.89103°W  
DATUM: NAD1927

LAT: 36.32563 °N  
LONG: 107.89165 °W  
DATUM: NAD1983

## 17 OPERATOR CERTIFICATION

I hereby certify that the information contained herein is true and complete to the best of my knowledge and belief, and that this organization either owns a working interest or unleased mineral interest in the land including the proposed bottom-hole location or has a right to drill this well at this location pursuant to a contract with an owner of such a mineral or working interest, or to a voluntary pooling agreement or a compulsory pooling order heretofore entered by the division.

Signature [Signature] Date 8/1/2017

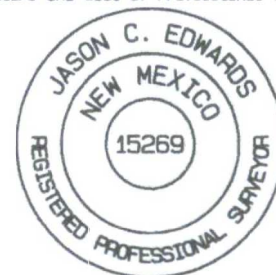
Printed Name  
Matt.Strickler@jnpresources.com

## 18 SURVEYOR CERTIFICATION

I hereby certify that the well location shown on this plat was plotted from field notes of actual surveys made by me or under my supervision, and that the same is true and correct to the best of my belief.

Date Revised: JULY 31, 2017  
Survey Date: OCTOBER 10, 2012

Signature and Seal of Professional Surveyor



JASON C. EDWARDS  
Certificate Number 15269