

District I
1625 N. French Dr., Hobbs, NM 88240
District II
1301 W. Grand Avenue, Artesia, NM 88210
District III
1000 Rio Brazos Road, Aztec, NM 87410
District IV
1220 S. St. Francis Dr., Santa Fe, NM 87505

State of New Mexico
Energy Minerals and Natural Resources
Oil Conservation Division
1220 South St. Francis Dr.
Santa Fe, NM 87505

Form C-141
Revised August 8, 2011
OIL CONS. DIV. DIST. 3
Submit 1 Copy to appropriate District Office to
accordance with 19.15.29 NMAC.
AUG 21 2017

Release Notification and Corrective Action

OPERATOR

☐ Initial Report ☒ Final Report

Name of Company Hilcorp Energy Company	Contact Jennifer Deal	
Address 9a CR 5793, Farmington, NM 87401	Telephone No. (505) 599-3400	
Facility Name: Scott 9	Facility Type: Gas well	
Surface Owner BLM	Mineral Owner Fed	API No. 3004521818

LOCATION OF RELEASE

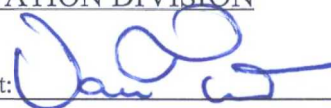
Unit Letter C	Section 17	Township 31	Range 10	Feet from the 830	North/South Line North	Feet from the 1500	East/West Line West	County San Juan
-------------------------	----------------------	-----------------------	--------------------	-----------------------------	----------------------------------	------------------------------	-------------------------------	---------------------------

Latitude **36.90331** Longitude **-107.90937**

NATURE OF RELEASE

Type of Release Hydrocarbon	Volume of Release Unknown	Volume Recovered 1801 cubic yards
Source of Release BGT	Date and Hour of Occurrence	Date and Hour of Discovery
Was Immediate Notice Given? <input type="checkbox"/> Yes <input type="checkbox"/> No <input checked="" type="checkbox"/> Not Required	If YES, To Whom?	
By Whom?	Date and Hour	
Was a Watercourse Reached? <input type="checkbox"/> Yes <input type="checkbox"/> No	If YES, Volume Impacting the Watercourse.	
If a Watercourse was Impacted, Describe Fully.*		
Describe Cause of Problem and Remedial Action Taken.* Historic contamination was encountered after soil sample was taken on 11-10-16		
Describe Area Affected and Cleanup Action Taken.* Delineation of the BGT area on 12-13-16 indicates a 22'x 22' x 9' area that will be excavated to at or below action levels. Excavation was 32' x 40' x 38' Deep. Release assessment was completed by third-party environmental and analytical results were below the NMOCD regulatory standards – no further action required. The soil sampling report is attached for review.		

I hereby certify that the information given above is true and complete to the best of my knowledge and understand that pursuant to NMOCD rules and regulations all operators are required to report and/or file certain release notifications and perform corrective actions for releases which may endanger public health or the environment. The acceptance of a C-141 report by the NMOCD marked as "Final Report" does not relieve the operator of liability should their operations have failed to adequately investigate and remediate contamination that pose a threat to ground water, surface water, human health or the environment. In addition, NMOCD acceptance of a C-141 report does not relieve the operator of responsibility for compliance with any other federal, state, or local laws and/or regulations.

Signature: 	OIL CONSERVATION DIVISION	
Printed Name: Jennifer Deal	Approved by Environmental Specialist: 	
Title: Environmental Specialist	Approval Date: 9/12/2017	Expiration Date:
E-mail Address: jdeal@hilcorp.com	Conditions of Approval:	Attached <input type="checkbox"/>
Date: 8/14/2017 Phone: 505-324-5128		

* Attach Additional Sheets If Necessary

NF1702337427

57



July 25, 2017

Robert Spearman
ConocoPhillips
San Juan Business Unit
(505) 320-3045

OIL CONS. DIV DIST. 3

AUG 21 2017

Via electronic mail to:
SJBUE-Team@ConocoPhillips.com

**RE: Below Grade Tank Closure, Release Assessment, and Final Excavation Report
Scott 9
San Juan County, New Mexico**

Dear Mr. Spearman:

On November 10 and December 13, 2016, and April 26 through July 17, 2017, Animas Environmental Services, LLC (AES) completed below grade tank (BGT) closure sampling, a release assessment, and environmental clearance of the final excavation limits at the ConocoPhillips (COP) Scott 9 located in San Juan County, New Mexico.

At the request of the New Mexico Oil Conservation Division (NMOCD), resampling of the location below the former BGT was required to meet all required closure criteria listed in New Mexico Administrative Code (NMAC) 19.15.17.13E. After the below grade tank sampling, an initial release assessment was completed on December 13, 2016, and the final excavation was completed by COP contractors prior to AES' arrival on location on July 17, 2017.

1.0 Site Information

1.1 Location

Site Name – Scott 9
Legal Description – NE¼ NW¼, Sect. 17, T31N, R10W
San Juan County, New Mexico
Well Latitude/Longitude – N36.90331 and W107.90937
BGT Latitude/Longitude – N36.90335 and W107.90961
Land Jurisdiction – Bureau of Land Management (BLM)
Figure 1. Topographic Site Location Map
Figure 2. Aerial Site Map, 2016 and 2017

604 W. Piñon St.
Farmington, NM 87401
505-564-2281

1911 Main, Ste 206
Durango, CO 81301
970-403-3084

1.2 NMOCD Ranking

Prior to site work, NMOCD and New Mexico Office of the State Engineer (NMOSE) databases were reviewed, and a cathodic protection report dated May 1991 for the location, reported the depth to groundwater at 310 feet below ground surface (bgs). Additional review of site criteria was conducted, and the risk ranking for the site is **10**. However, at the request of the NMOCD, the most stringent sample result criteria were applied to this BGT. Note these criteria normally apply to sites with a depth to groundwater of 0 to 50 feet.

1.3 Assessment

AES was initially contacted by Robert Spearman, COP representative, on November 2, 2016, and on November 10, 2016, Corwin Lameman and Sam Glasses of AES traveled to the location. Soil sampling consisted of collection of one soil sample (BGT S-1) from the center of the former BGT footprint at a depth of eight feet. Soil sample results were above the action levels, and a release was confirmed.

On December 13, 2016, AES personnel returned to the location to complete the release assessment field work. The assessment included collection and field sampling of 14 soil samples from 11 soil borings (SB-1 through SB-11). Based on field sampling results, AES recommended excavation of the release area. Sample locations are shown on Figure 3.

On April 26, May 10, and July 17, 2017, AES returned to the location to collect confirmation soil samples of the excavation extents. The field sampling activities included collection of nine confirmation soil samples (SC-1 through SC-9) from the walls and base of the excavation. The area of the final excavation measured approximately 32 feet by 40 feet by 38 feet in depth. Note that the depth of the excavation was limited due to the reach of the excavator. Sample locations and final excavation extents are presented on Figure 4.

2.0 Soil Sampling

A total of 14 soil samples (SB-1 through SB-11) and 9 composite samples (SC-1 through SC-9) were collected during the assessment and excavation clearance. All samples were field screened for volatile organic compounds (VOCs), and selected samples were analyzed for total petroleum hydrocarbons (TPH). Composite samples collected during the excavation clearance were submitted for confirmation laboratory analysis.

2.1 Field Sampling

2.1.1 Volatile Organic Compounds

Field screening for VOC vapors was conducted with a photo-ionization detector (PID) organic vapor meter (OVM). Before beginning field screening, the PID-OVM was first calibrated with 100 parts per million (ppm) isobutylene gas.

2.1.2 Total Petroleum Hydrocarbons

Soil samples were also analyzed in the field for TPH per U.S. Environmental Protection Agency (USEPA) Method 418.1 using a Buck Scientific Model HC-404 Total Hydrocarbon Analyzer Infrared Spectrometer (Buck). A 3-point calibration was completed prior to conducting soil analyses. Field analytical protocol followed AES's *Standard Operating Procedure: Field Analysis Total Petroleum Hydrocarbons per EPA Method 418.1*.

2.2 Laboratory Analyses

The soil samples collected for laboratory analysis were placed into new, clean, laboratory-supplied containers, which were then labeled, placed on ice, and logged onto sample chain of custody records. Samples were maintained on ice until delivery to the analytical laboratory, Hall Environmental Analysis Laboratory (Hall) in Albuquerque, New Mexico. All soil samples were laboratory analyzed for:

- Benzene, toluene, ethylbenzene and xylene (BTEX) per USEPA Method 8021B; and
- TPH as gasoline range, diesel range and motor oil range organics (GRO/DRO/MRO) per USEPA Method 8015.

In addition, soil sample BGT S-1 was laboratory analyzed for:

- TPH per USEPA Method 418.1; and
- Chlorides per USEPA Method 300.0.

2.3 Field and Laboratory Analytical Results

Field sampling results and laboratory analytical results are summarized in Tables 1 and 2, respectively, and on Figures 3 and 4. The AES Field Sampling Reports and laboratory analytical reports are attached.

Table 1. Soil Field VOCs and TPH Results
 Scott 9 Release Assessment and Final Excavation
 December 2016 through July 2017

<i>Sample ID</i>	<i>Date Sampled</i>	<i>Sample Depth (ft bgs)</i>	<i>VOCs via OVM (ppm)</i>	<i>Field TPH (mg/kg)</i>
<i>NMOCD Action Level (Strictest)</i>			<i>--*</i>	<i>100*</i>
SB-1	12/13/16	6.5	4,515	8,660
		8.5	4,618	11,400
SB-2	12/13/16	8.5	3.9	<20.0
SB-3	12/13/16	9	6.8	25.9
SB-4	12/13/16	7	3,158	2,770
		9	4,231	47,800
SB-5	12/13/16	8	4,116	22,300
SB-6	12/13/16	8.75	8.1	<20.0
SB-7	12/13/16	7.5	3,166	NA
		8.5	3,901	7,640
SB-8	12/13/16	8	5.2	<20.0
SB-9	12/13/16	8.5	0.5	<20.0
SB-10	12/13/16	8.5	0.4	<20.0
SB-11	12/13/16	8	0.3	<20.0
SC-1	4/26/17	0 to 15	12.2	41.3
SC-2	4/26/17	0 to 15	21.9	23.5
SC-3	4/26/17	0 to 15	17.5	<20.0
SC-4	4/26/17	0 to 15	2,373	1,440
SC-5	7/17/17	38	5.0	69.1
SC-6	5/10/17	15 to 35	1,314	128
SC-7	5/10/17	15 to 30	107	31.4
SC-8	7/17/17	30 to 38	1.7	40.4
SC-9	7/17/17	30 to 38	1,045	60.8

NA – not analyzed

*Action level determined by NMAC 19.15.17.13 Table 1.

Table 2. Soil Laboratory Analytical Results – Benzene, Total BTEX, TPH, and Chlorides
 Scott 9 BGT Closure and Final Excavation
 November 2016 and July 2017

Sample ID	Date Sampled	Sample Depth (ft bgs)	Benzene (mg/kg)	Total BTEX (mg/kg)	TPH (418.1) (mg/kg)	TPH GRO (8015) (mg/kg)	TPH DRO (8015) (mg/kg)	TPH MRO (8015) (mg/kg)	Chlorides (mg/kg)
NMOCD Action Level (Strictest)*			10*	50*	100*		100*		600*
BGT S-1	11/10/16	8	<1.2	113	10,000	4,300	2,500	<460	120
SC-1	4/26/17	0 to 15	<0.016	<0.147	NA	4.9	23	<47	NA
SC-2	4/26/17	0 to 15	<0.016	<0.144	NA	<3.2	<9.3	<46	NA
SC-3	4/26/17	0 to 15	<0.014	<0.125	NA	<2.8	13	<48	NA
SC-5	7/17/17	38	<0.019	<0.171	NA	<3.8	<9.9	<49	NA
SC-6	5/10/17	15 to 35	<0.078	1.72	NA	140	120	<47	NA
SC-7	5/10/17	15 to 30	<0.014	0.246	NA	18	<9.7	<49	NA
SC-8	7/17/17	30 to 38	<0.082	<0.732	NA	<16	<9.6	<48	NA
SC-9	7/17/17	30 to 38	<0.092	1.98	NA	67	25	<49	NA

NA – not analyzed

*Action level determined by *NMAC 19.15.17.13 Table 1*.

3.0 Conclusions and Recommendations

3.1 BGT Closure

On November 10, 2016, AES conducted BGT closure sampling at the location. NMOCD action levels for BGT closures are specified in New Mexico Administrative Code (NMAC) 19.15.17.13 Table 1, and for this location the most stringent action levels were utilized per a request from NMOCD. BGT closure sampling results were above the NMOCD action levels of 50 mg/kg for total BTEX and 100 mg/kg for TPH, with BGT S-1 reporting laboratory concentrations of 113 mg/kg total BTEX, 10,000 mg/kg TPH (418.1), and 6,800 mg/kg TPH (as GRO/DRO/MRO), respectively. Chloride concentrations in BGT S-1 were reported below the NMOCD action level of 600 mg/kg, with 120 mg/kg. Based on laboratory concentrations, a release was confirmed at the Scott 9.

3.2 Release Assessment

On December 13, 2016, AES completed a release assessment at the location. Release assessment field sampling results above the NMOCD action level of 100 mg/kg TPH were reported in SB-1, SB-4, SB-5, and SB-7. The highest field TPH concentration was

reported in SB-4, with a concentration of 47,800 mg/kg TPH. Excavation of the release area was recommended.

3.3 Excavation Clearance

On April 26, May 10 and July 17, 2017, clearances of various portions of the excavation were completed. Field sampling results of the excavation extents showed field TPH concentrations were below the strictest NMOCD action level of 100 mg/kg for all samples, except SC-4 and SC-6. Note that SC-4 (which was sampled at 0 to 15 ft and was located in close proximity to the wellhead) had field TPH concentrations of 1,440 mg/kg; the excavation was subsequently extended and deepened in this area, with SC-7 below the NMOCD threshold for field TPH at 31.4 mg/kg. SC-6 slightly exceeded the strictest NMOCD threshold for field TPH, with 128 mg/kg. Laboratory analytical results showed TPH concentrations (as GRO/DRO/MRO) also exceeded the strictest NMOCD action levels in SC-6, with concentrations of GRO (140 mg/kg) and DRO (120 mg/kg), while MRO, which is less mobile in the subsurface, was reported at <47 mg/kg. Laboratory analytical results from all samples reported benzene and total BTEX concentrations as below NMOCD action levels.

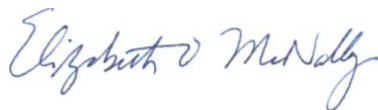
Based on the final field sampling and laboratory analytical results of the excavation of petroleum contaminated soils at the Scott 9, benzene, total BTEX, and TPH concentrations were below the strictest NMOCD action levels for the final sidewalls and base of the excavation, except for TPH at SC-6 (east wall) with 140 mg/kg GRO and 120 mg/kg DRO. However, if the risk ranking of 10 is applied, the action level for TPH is 1,000 mg/kg, and SC-6 TPH concentrations are well below risk-based action levels. If a variance is granted by NMOCD for SC-6, then no further work is recommended.

If you have any questions about this report or site conditions, please do not hesitate to contact Elizabeth McNally at (505) 564-2281.

Sincerely,



David J. Reese
Environmental Scientist



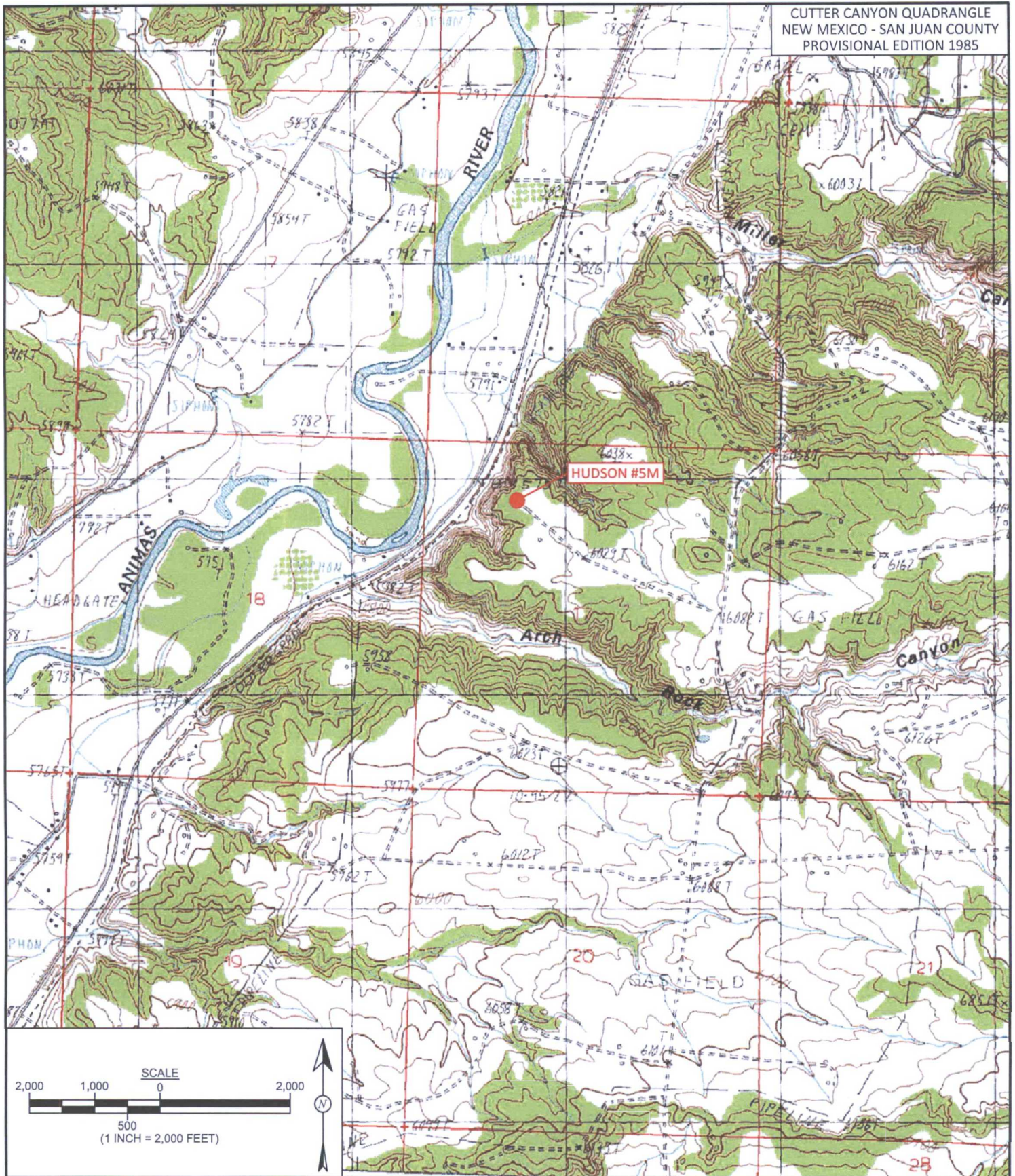
Elizabeth McNally, P.E.

Attachments:

- Figure 1. Topographic Site Location Map
- Figure 2. Aerial Site Map, 2016 and 2017
- Figure 3. BGT Closure and Release Assessment Sample Locations and Results,
November and December 2016
- Figure 4. Excavation Sample Locations and Results, April through July 2017
- AES Field Sampling Reports 121316, 042617, 051017, 071717
- Hall Laboratory Analytical Reports 1611633, 1704C07, 1705588, 1707842

\\SVRMAIN2\Shared\Animas 2000\Dropbox (Animas Environmental)\0000 AES Server Client Projects
Dropbox\2017 Client Projects\ConocoPhillips\Scott 9 (Hudson 5M)\Scott 9 BGT Release Assessment and
Excavation Report 072517.docx

Figures



**animas
environmental
services**

Farmington, NM • Durango, CO
animasenvironmental.com

DRAWN BY:

C. Lameman

DATE DRAWN:

December 19, 2016

REVISIONS BY:

C. Lameman

DATE REVISED:

December 19, 2016

CHECKED BY:

E. McNally

DATE CHECKED:

December 19, 2016

APPROVED BY:

E. McNally

DATE APPROVED:

December 19, 2016

FIGURE 1

TOPOGRAPHIC SITE LOCATION MAP

ConocoPhillips
HUDSON #5M
NE¼ NW¼, SECTION 17, T31N, R10W
SAN JUAN COUNTY, NEW MEXICO
N36.90331, W107.90937

NOTE:
 NMOCD RISK RANK IS "10". HOWEVER, AT REQUEST OF NMOCD,
 STRICTEST CLOSURE REQUIREMENTS SPECIFIED IN NMAC 19.15.17.13E
 TABLE 1 ARE TO BE UTILIZED. ACTION LEVELS ARE: 100 mg/kg TPH, 10
 mg/kg BENZENE, 50 mg/kg TOTAL BTEX, AND 600 mg/kg CHLORIDE.

LEGEND

=====

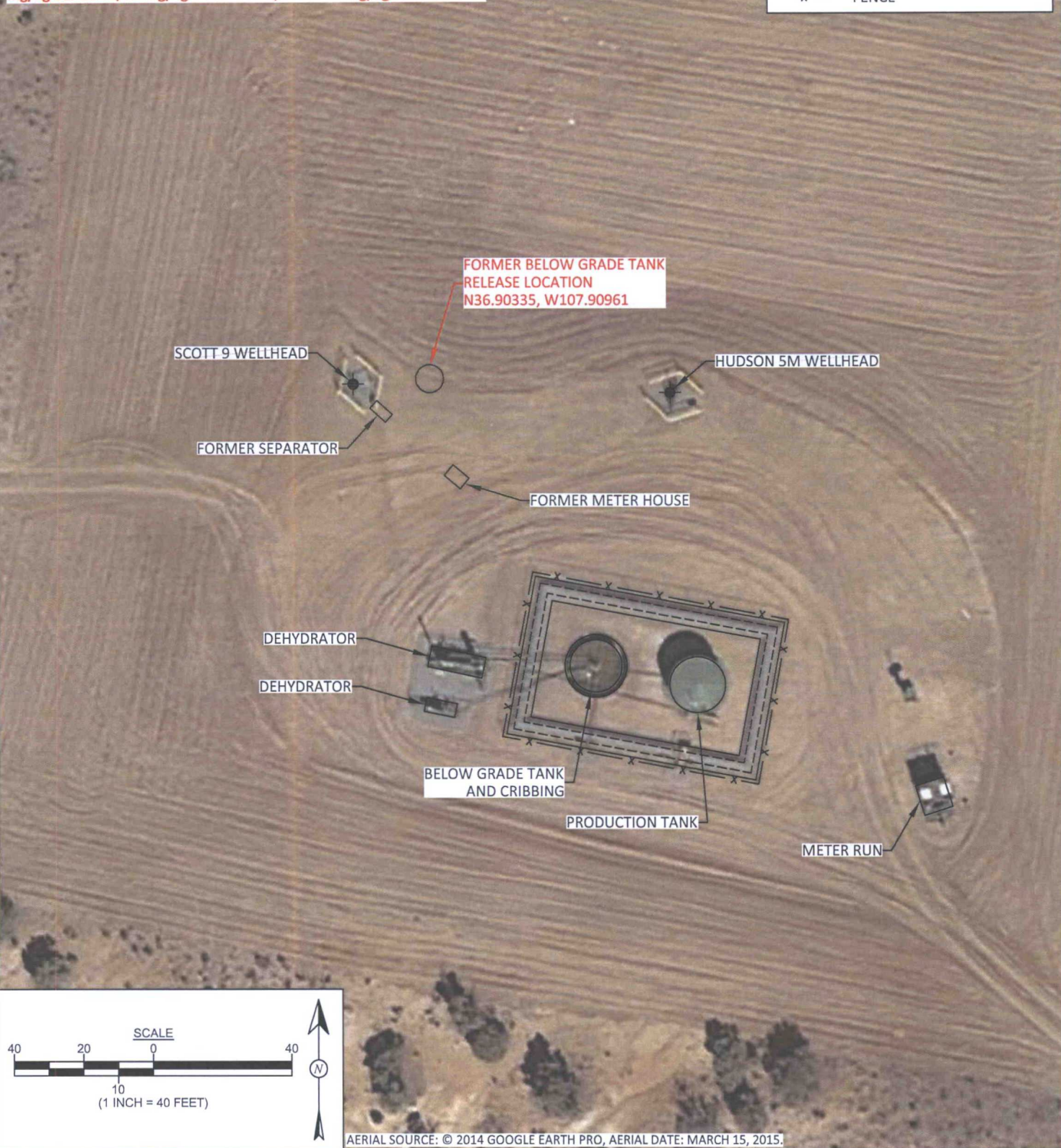
SECONDARY CONTAINMENT

=====

BERM

— x —

FENCE



<div> <div> <div>AES</div> <div> <div>animas environmental services</div> <div>Farmington, NM • Durango, CO</div> <div>animasenvironmental.com</div> </div> </div> </div>	DRAWN BY: C. Lameman	DATE DRAWN: December 19, 2016	<div> <div>FIGURE 2</div> <div>AERIAL SITE MAP 2016 AND 2017</div> <div>ConocoPhillips</div> <div>SCOTT 9</div> <div>NE¼ NW¼, SECTION 17, T31N, R10W</div> <div>SAN JUAN COUNTY, NEW MEXICO</div> <div>N36.90331, W107.90937</div> </div>
	REVISIONS BY: C. Lameman	DATE REVISED: July 19, 2017	
	CHECKED BY: E. McNally	DATE CHECKED: July 19, 2017	
	APPROVED BY: E. McNally	DATE APPROVED: July 19, 2017	

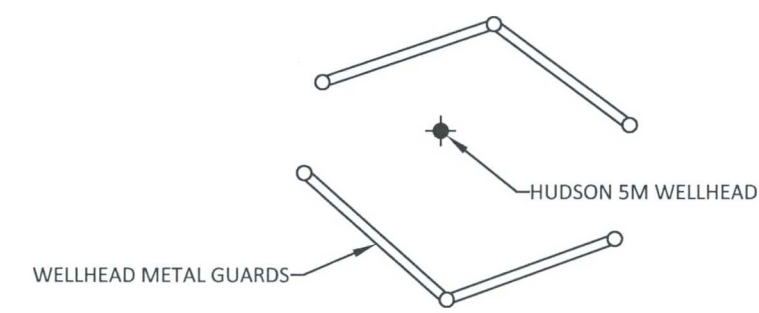
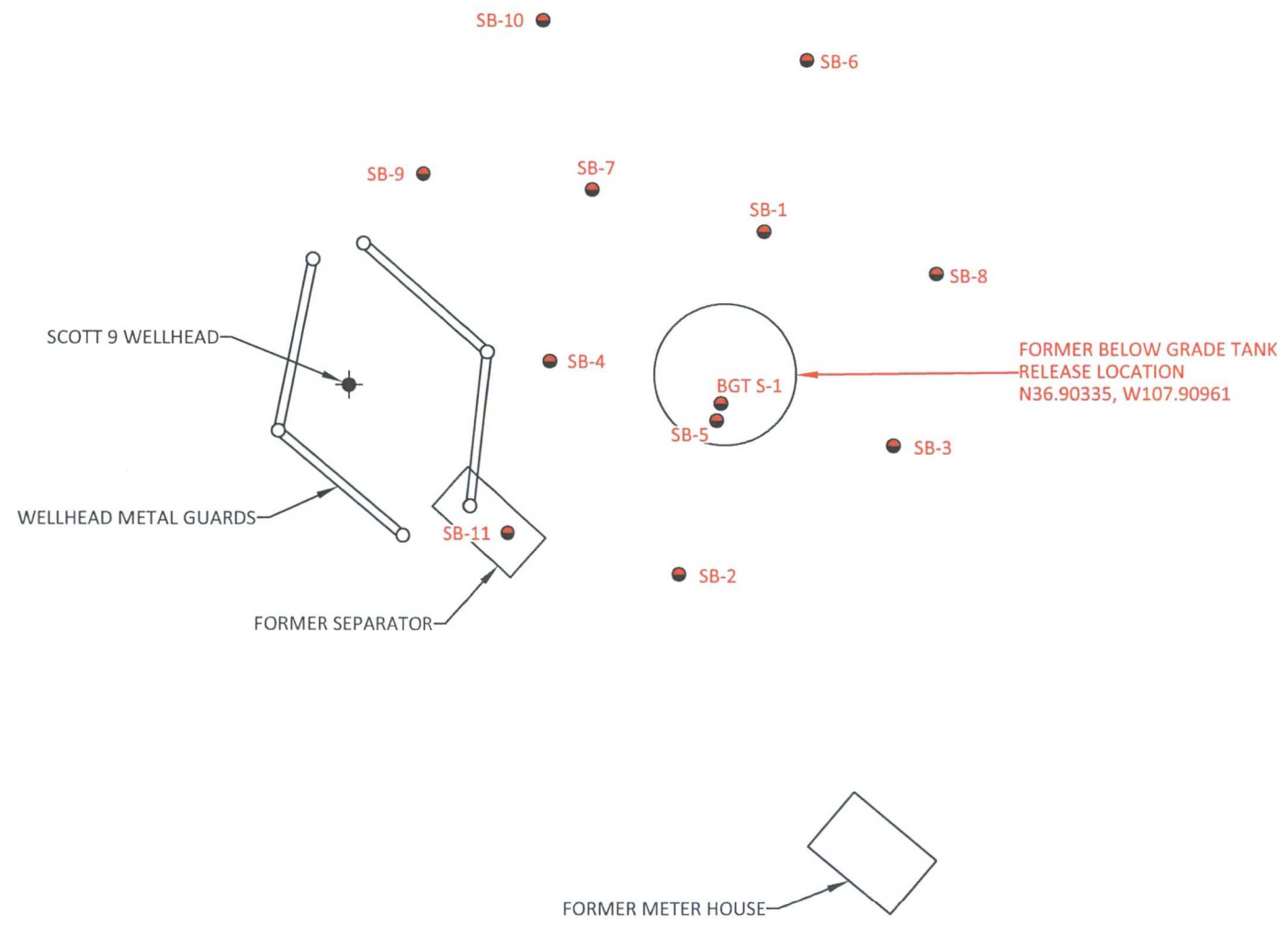
SB-1	12/13/16	6.5	4,515	8,660
		8.5	4,618	11,400
SB-2	12/13/16	8.5	3.9	<20.0
SB-3	12/13/16	9	6.8	25.9
SB-4	12/13/16	7	3,158	2,770
		9	4,231	47,800
SB-5	12/13/16	8	4,116	22,300
SB-6	12/13/16	8.75	8.1	<20.0
SB-7	12/13/16	7.5	3,166	NA
		8.5	3,901	7,640
SB-8	12/13/16	8	5.2	<20.0
SB-9	12/13/16	8.5	0.5	<20.0
SB-10	12/13/16	8.5	0.4	<20.0
SB-11	12/13/16	8	0.3	<20.0
NA - NOT ANALYZED				

NOVEMBER AND DECEMBER 2016
ConocoPhillips
SCOTT #9
NE¼ NW¼, SECTION 17, T31N, R10W
SAN JUAN COUNTY, NEW MEXICO
N36.90331, W107.90937



DRAWN BY: C. Lameman	DATE DRAWN: December 19, 2016
REVISIONS BY: C. Lameman	DATE REVISED: July 25, 2017
CHECKED BY: D. Reese	DATE CHECKED: July 25, 2017
APPROVED BY: E. McNally	DATE APPROVED: July 25, 2017

Laboratory Analytical Results									
Sample ID	Date	Depth (ft)	Benzene (mg/kg)	Total BTEX (mg/kg)	TPH 418.1 (mg/kg)	TPH - GRO (mg/kg)	TPH - DRO (mg/kg)	TPH - MRO (mg/kg)	Chlorides (mg/kg)
NMOCD ACTION LEVEL			10	50	100	100			600
BGT S-1	11/10/16	8	<1.2	113	10,000	4,300	2,500	<460	120
SAMPLE WAS ANALYZED PER USEPA METHOD 8021B, 418.1, 8015D AND 300.0									



- LEGEND**
- SOIL BORING LOCATIONS
 - ===== SECONDARY CONTAINMENT BERM
 - x — FENCE



NOTE THAT THE PRESENCE OF THE WELL HEAD AND THE DEPTH OF THE EXCAVATION WERE MITIGATING FACTORS IN SCHEDULING FURTHER WORK ON THE EXCAVATION AND SAMPLING SC-4 FOR LAB CONFIRMATION .

INITIAL EXCAVATION AREA (APRIL 26, 2017)
30 FT x 37 FT x 18 FT DEEP

EXCAVATION AREA
32 FT x 40 FT x 38 FT DEEP

EXCAVATION EXTENDED BASED ON FIELD RESULTS

NOTE THAT SC-3 (APRIL 2017) WAS COLLECTED AT 0 TO 15 FEET AND WAS BELOW THE ACTION LEVEL. EXCAVATION WAS LATER DEEPEMED AND WIDENED. SC-6 (MAY 2017) WAS COLLECTED BETWEEN 15 TO 35 FEET. RESULTS WERE SLIGHTLY ABOVE STRICTEST ACTION LEVEL OF 100 mg/kg.

SC-2	4/26/17	0 to 15	21.5	23.5
SC-3	4/26/17	0 to 15	17.5	<20.0
SC-4	4/26/17	0 to 15	2,373	1,440
SC-5	7/17/17	38	5.0	69.1
SC-6	5/10/17	15 to 35	1,314	128
SC-7	5/10/17	15 to 30	107	31.4
SC-8	7/17/17	30 to 38	1.7	40.4
SC-9	7/17/17	30 to 38	1,045	60.8



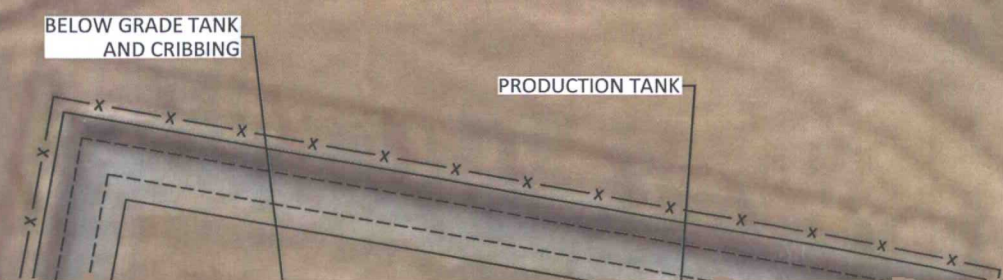
animas
environmental
services
Farmington, NM • Durango, CO
animasenvironmental.com

DRAWN BY: C. Lameman	DATE DRAWN: May 10, 2017
REVISIONS BY: C. Lameman	DATE REVISED: July 25, 2017
CHECKED BY: D. Reese	DATE CHECKED: July 25, 2017
APPROVED BY: E. McNally	DATE APPROVED: July 25, 2017

LEGEND

- SAMPLE LOCATIONS
- SECONDARY CONTAINMENT BERM
- FENCE

Laboratory Analytical Results							
Sample ID	Date	Depth (ft)	Benzene (mg/kg)	Total BTEX (mg/kg)	TPH - GRO (mg/kg)	TPH - DRO (mg/kg)	TPH - MRO (mg/kg)
NMOCD ACTION LEVEL			10	50	100		
SC-1	4/26/17	0 to 15	<0.016	<0.147	4.9	23	<47
SC-2	4/26/17	0 to 15	<0.016	<0.144	<3.2	<9.3	<46
SC-3	4/26/17	0 to 15	<0.014	<0.125	<2.8	13	<48
SC-5	7/17/17	38	<0.019	<0.171	<3.8	<9.9	<49



FORMER BELOW GRADE TANK
RELEASE LOCATION
N36.90335, W107.90961

NOTE:
NMOCD RISK RANK IS "10". HOWEVER, AT REQUEST OF NMOCD, STRICTEST CLOSURE REQUIREMENTS SPECIFIED IN NMAC 19.15.17.13E TABLE 1 ARE TO BE UTILIZED. ACTION LEVELS ARE: 100 mg/kg TPH, 10 mg/kg BENZENE, 50 mg/kg TOTAL BTEX, AND 600 mg/kg CHLORIDE.

SCOTT 9 WELLHEAD

FORMER WELLHEAD
METAL GUARDS

FORMER SEPARATOR

FORMER METER HOUSE

WELLHEAD METAL GUARDS

HUDSON 5M WELLHEAD

Field Notes

AES Field Sampling Report

Animas Environmental Services, LLC



Client: ConocoPhillips

Project Location: Scott 9

Date: 12/13/2016

Matrix: Soil

Sample ID	Collection Date	Collection Time	OVM (ppm)	Field TPH* (mg/kg)	Field TPH Analysis Time	TPH PQL (mg/kg)	DF	TPH Analysts Initials
SB-1 @ 6.5'	12/13/2016	11:58	4,515	8,660	12:30	200	10	CL
SB-1 @ 8.5'	12/13/2016	12:11	4,618	11,400	12:41	200	10	CL
SB-2 @ 8.5'	12/13/2016	12:48	3.9	<20.0	13:25	20.0	1	CL
SB-3 @ 9'	12/13/2016	11:26	6.8	25.9	11:52	20.0	1	CL
SB-4 @ 7'	12/13/2016	13:45	3,158	2,770	14:02	20.0	1	CL
SB-4 @ 9'	12/13/2016	13:50	4,231	47,800	14:24	2000	100	CL
SB-5 @ 8'	12/13/2016	10:38	4,116	22,300	11:10	200	10	CL
SB-6 @ 8.75'	12/13/2016	14:25	8.1	<20.0	14:43	20.0	1	CL
SB-7 @ 7.5'	12/13/2016	14:50	3,166	Not Analyzed for TPH				
SB-7 @ 8.5'	12/13/2016	14:54	3,901	7,640	15:13	200	10	CL
SB-8 @ 8'	12/13/2016	15:20	5.2	<20.0	15:32	20.0	1	CL
SB-9 @ 8.5'	12/13/2016	15:52	0.5	<20.0	16:06	20.0	1	CL
SB-10 @ 8.5'	12/13/2016	16:11	0.4	<20.0	16:27	20.0	1	CL
SB-11 @ 8'	12/13/2016	16:31	0.3	<20.0	16:44	20.0	1	CL

Sample ID	Collection Date	Collection Time	OVM (ppm)	Field TPH* (mg/kg)	Field TPH Analysis Time	TPH PQL (mg/kg)	DF	TPH Analysts Initials
-----------	-----------------	-----------------	-----------	--------------------	-------------------------	-----------------	----	-----------------------

DF Dilution Factor

NA Not Analyzed

PQL Practical Quantitation Limit

**Field TPH concentrations recorded may be below PQL.*

Total Petroleum Hydrocarbons - USEPA 418.1

Analyst:



AES Field Sampling Report

Animas Environmental Services, LLC



Client: ConocoPhillips

Project Location: Scott 9

Date: 4/26/2017

Matrix: Soil

Sample ID	Collection Date	Collection Time	Sample Location	OVN (ppm)	Field TPH* (mg/kg)	Field TPH Analysis Time	TPH PQL (mg/kg)	DF	TPH Analysts Initials
SC-1	4/26/2017	9:20	North Wall	12.2	41.3	10:41	20.0	1	CL
SC-2	4/26/2017	9:30	South Wall	21.9	23.5	10:44	20.0	1	CL
SC-3	4/26/2017	9:40	East Wall	17.5	<20.0	10:47	20.0	1	CL
SC-4	4/26/2017	9:50	West Wall	2,373	1,420	10:49	20.0	1	CL

DF Dilution Factor

NA Not Analyzed

PQL Practical Quantitation Limit

*TPH concentrations recorded may be below PQL.

Total Petroleum Hydrocarbons - USEPA 418.1

Analyst:

AES Field Sampling Report

Animas Environmental Services, LLC



Client: ConocoPhillips

Project Location: Scott 9

Date: 5/10/2017

Matrix: Soil

Sample ID	Collection Date	Collection Time	Sample Location	OVN (ppm)	Field TPH* (mg/kg)	Field TPH Analysis Time	TPH PQL (mg/kg)	DF	TPH Analysts Initials
SC-6	5/10/2017	9:40	East Wall	1,314	128	9:44	20.0	1	CL
SC-7	5/10/2017	9:55	West Wall	107	31.4	9:47	20.0	1	CL

DF Dilution Factor

NA Not Analyzed

PQL Practical Quantitation Limit

*TPH concentrations recorded may be below PQL.

Total Petroleum Hydrocarbons - USEPA 418.1

Analyst:

AES Field Sampling Report

Animas Environmental Services, LLC



Client: ConocoPhillips

Project Location: Scott 9

Date: 7/17/2017

Matrix: Soil

Sample ID	Collection Date	Collection Time	Sample Location	OVM (ppm)	Field TPH* (mg/kg)	Field TPH Analysis Time	TPH PQL (mg/kg)	DF	TPH Analysts Initials
SC-5	7/17/2017	10:25	Base	5.0	69.1	11:02	20.0	1	CL
SC-8	7/17/2017	10:30	North Wall	1.7	40.4	10:57	20.0	1	CL
SC-9	7/17/2017	10:35	South Wall	1,045	60.8	11:58	20.0	1	CL

DF Dilution Factor

NA Not Analyzed

PQL Practical Quantitation Limit

*TPH concentrations recorded may be below PQL.

Total Petroleum Hydrocarbons - USEPA 418.1

Analyst:

Analytical Reports



Hall Environmental Analysis Laboratory
4901 Hawkins NE
Albuquerque, NM 87109
TEL: 505-345-3975 FAX: 505-345-4107
Website: www.hallenvironmental.com

November 17, 2016

Emilee Skyles

Animas Environmental

604 Pinon Street

Farmington, NM 87401

TEL: (505) 564-2281

FAX

RE: COPC Hudson 5M

OrderNo.: 1611633

Dear Emilee Skyles:

Hall Environmental Analysis Laboratory received 1 sample(s) on 11/11/2016 for the analyses presented in the following report.

These were analyzed according to EPA procedures or equivalent. To access our accredited tests please go to www.hallenvironmental.com or the state specific web sites. In order to properly interpret your results it is imperative that you review this report in its entirety. See the sample checklist and/or the Chain of Custody for information regarding the sample receipt temperature and preservation. Data qualifiers or a narrative will be provided if the sample analysis or analytical quality control parameters require a flag. When necessary, data qualifiers are provided on both the sample analysis report and the QC summary report, both sections should be reviewed. All samples are reported, as received, unless otherwise indicated. Lab measurement of analytes considered field parameters that require analysis within 15 minutes of sampling such as pH and residual chlorine are qualified as being analyzed outside of the recommended holding time.

Please don't hesitate to contact HEAL for any additional information or clarifications.

ADHS Cert #AZ0682 -- NMED-DWB Cert #NM9425 -- NMED-Micro Cert #NM0190

Sincerely,

A handwritten signature in black ink, appearing to read "Andy Freeman", is written over a horizontal line.

Andy Freeman

Laboratory Manager

4901 Hawkins NE

Albuquerque, NM 87109

Analytical Report

Lab Order 1611633

Date Reported: 11/17/2016

Hall Environmental Analysis Laboratory, Inc.

CLIENT: Animas Environmental

Client Sample ID: BGT S-1

Project: COPC Hudson 5M

Collection Date: 11/10/2016 10:00:00 AM

Lab ID: 1611633-001

Matrix: SOIL

Received Date: 11/11/2016 8:00:00 AM

Analyses	Result	PQL	Qual	Units	DF	Date Analyzed	Batch
EPA METHOD 418.1: TPH							Analyst: MAB
Petroleum Hydrocarbons, TR	10000	1900		mg/Kg	100	11/16/2016 12:00:00 PM	28668
EPA METHOD 300.0: ANIONS							Analyst: MRA
Chloride	120	30		mg/Kg	20	11/16/2016 2:34:58 PM	28702
EPA METHOD 8015M/D: DIESEL RANGE ORGANICS							Analyst: JME
Diesel Range Organics (DRO)	2500	92		mg/Kg	10	11/16/2016 9:02:42 AM	28641
Motor Oil Range Organics (MRO)	ND	460		mg/Kg	10	11/16/2016 9:02:42 AM	28641
Surr: DNOP	0	70-130	S	%Rec	10	11/16/2016 9:02:42 AM	28641
EPA METHOD 8015D: GASOLINE RANGE							Analyst: NSB
Gasoline Range Organics (GRO)	4300	250		mg/Kg	50	11/15/2016 1:32:05 AM	28620
Surr: BFB	637	68.3-144	S	%Rec	50	11/15/2016 1:32:05 AM	28620
EPA METHOD 8021B: VOLATILES							Analyst: NSB
Benzene	ND	1.2		mg/Kg	50	11/15/2016 1:32:05 AM	28620
Toluene	3.0	2.5		mg/Kg	50	11/15/2016 1:32:05 AM	28620
Ethylbenzene	ND	2.5		mg/Kg	50	11/15/2016 1:32:05 AM	28620
Xylenes, Total	110	4.9		mg/Kg	50	11/15/2016 1:32:05 AM	28620
Surr: 4-Bromofluorobenzene	150	80-120	S	%Rec	50	11/15/2016 1:32:05 AM	28620

Refer to the QC Summary report and sample login checklist for flagged QC data and preservation information.

Qualifiers:	*	Value exceeds Maximum Contaminant Level.	B	Analyte detected in the associated Method Blank
	D	Sample Diluted Due to Matrix	E	Value above quantitation range
	H	Holding times for preparation or analysis exceeded	J	Analyte detected below quantitation limits
	ND	Not Detected at the Reporting Limit	P	Sample pH Not In Range
	R	RPD outside accepted recovery limits	RL	Reporting Detection Limit
	S	% Recovery outside of range due to dilution or matrix	W	Sample container temperature is out of limit as specified

QC SUMMARY REPORT

Hall Environmental Analysis Laboratory, Inc.

WO#: 1611633

17-Nov-16

Client: Animas Environmental

Project: COPC Hudson 5M

Sample ID	MB-28702	SampType:	mblk	TestCode:	EPA Method 300.0: Anions					
Client ID:	PBS	Batch ID:	28702	RunNo:	38771					
Prep Date:	11/16/2016	Analysis Date:	11/16/2016	SeqNo:	1211314	Units:	mg/Kg			
Analyte	Result	PQL	SPK value	SPK Ref Val	%REC	LowLimit	HighLimit	%RPD	RPDLimit	Qual
Chloride	ND	1.5								

Sample ID	LCS-28702	SampType:	lcs	TestCode:	EPA Method 300.0: Anions					
Client ID:	LCSS	Batch ID:	28702	RunNo:	38771					
Prep Date:	11/16/2016	Analysis Date:	11/16/2016	SeqNo:	1211315	Units:	mg/Kg			
Analyte	Result	PQL	SPK value	SPK Ref Val	%REC	LowLimit	HighLimit	%RPD	RPDLimit	Qual
Chloride	14	1.5	15.00	0	94.0	90	110			

Qualifiers:

* Value exceeds Maximum Contaminant Level.	B Analyte detected in the associated Method Blank
D Sample Diluted Due to Matrix	E Value above quantitation range
H Holding times for preparation or analysis exceeded	J Analyte detected below quantitation limits
ND Not Detected at the Reporting Limit	P Sample pH Not In Range
R RPD outside accepted recovery limits	RL Reporting Detection Limit
S % Recovery outside of range due to dilution or matrix	W Sample container temperature is out of limit as specified

QC SUMMARY REPORT

Hall Environmental Analysis Laboratory, Inc.

WO#: 1611633

17-Nov-16

Client: Animas Environmental

Project: COPC Hudson 5M

Sample ID	MB-28668	SampType:	MBLK	TestCode:	EPA Method 418.1: TPH					
Client ID:	PBS	Batch ID:	28668	RunNo:	38752					
Prep Date:	11/15/2016	Analysis Date:	11/16/2016	SeqNo:	1210600	Units:	mg/Kg			
Analyte	Result	PQL	SPK value	SPK Ref Val	%REC	LowLimit	HighLimit	%RPD	RPDLimit	Qual

Petroleum Hydrocarbons, TR ND 20

Sample ID	LCS-28668	SampType:	LCS	TestCode:	EPA Method 418.1: TPH					
Client ID:	LCSS	Batch ID:	28668	RunNo:	38752					
Prep Date:	11/15/2016	Analysis Date:	11/16/2016	SeqNo:	1210601	Units:	mg/Kg			
Analyte	Result	PQL	SPK value	SPK Ref Val	%REC	LowLimit	HighLimit	%RPD	RPDLimit	Qual

Petroleum Hydrocarbons, TR 110 20 100.0 0 113 80.7 121

Sample ID	LCSD-28668	SampType:	LCSD	TestCode:	EPA Method 418.1: TPH					
Client ID:	LCSS02	Batch ID:	28668	RunNo:	38752					
Prep Date:	11/15/2016	Analysis Date:	11/16/2016	SeqNo:	1210602	Units:	mg/Kg			
Analyte	Result	PQL	SPK value	SPK Ref Val	%REC	LowLimit	HighLimit	%RPD	RPDLimit	Qual

Petroleum Hydrocarbons, TR 110 20 100.0 0 111 80.7 121 1.18 20

Qualifiers:

* Value exceeds Maximum Contaminant Level.
D Sample Diluted Due to Matrix
H Holding times for preparation or analysis exceeded
ND Not Detected at the Reporting Limit
R RPD outside accepted recovery limits
S % Recovery outside of range due to dilution or matrix

B Analyte detected in the associated Method Blank
E Value above quantitation range
J Analyte detected below quantitation limits
P Sample pH Not In Range
RL Reporting Detection Limit
W Sample container temperature is out of limit as specified

QC SUMMARY REPORT

Hall Environmental Analysis Laboratory, Inc.

WO#: 1611633

17-Nov-16

Client: Animas Environmental

Project: COPC Hudson 5M

Sample ID	MB-28641	SampType:	MBLK	TestCode:	EPA Method 8015M/D: Diesel Range Organics					
Client ID:	PBS	Batch ID:	28641	RunNo:	38704					
Prep Date:	11/14/2016	Analysis Date:	11/15/2016	SeqNo:	1209527	Units:	mg/Kg			
Analyte	Result	PQL	SPK value	SPK Ref Val	%REC	LowLimit	HighLimit	%RPD	RPDLimit	Qual
Diesel Range Organics (DRO)	ND	10								
Motor Oil Range Organics (MRO)	ND	50								
Surr: DNOP	7.8		10.00		78.4	70	130			

Sample ID	LCS-28641	SampType:	LCS	TestCode:	EPA Method 8015M/D: Diesel Range Organics					
Client ID:	LCSS	Batch ID:	28641	RunNo:	38704					
Prep Date:	11/14/2016	Analysis Date:	11/15/2016	SeqNo:	1209529	Units:	mg/Kg			
Analyte	Result	PQL	SPK value	SPK Ref Val	%REC	LowLimit	HighLimit	%RPD	RPDLimit	Qual
Diesel Range Organics (DRO)	41	10	50.00	0	82.4	62.6	124			
Surr: DNOP	4.1		5.000		81.2	70	130			

Qualifiers:

* Value exceeds Maximum Contaminant Level.
D Sample Diluted Due to Matrix
H Holding times for preparation or analysis exceeded
ND Not Detected at the Reporting Limit
R RPD outside accepted recovery limits
S % Recovery outside of range due to dilution or matrix

B Analyte detected in the associated Method Blank
E Value above quantitation range
J Analyte detected below quantitation limits
P Sample pH Not In Range
RL Reporting Detection Limit
W Sample container temperature is out of limit as specified

QC SUMMARY REPORT

Hall Environmental Analysis Laboratory, Inc.

WO#: 1611633

17-Nov-16

Client: Animas Environmental

Project: COPC Hudson 5M

Sample ID	MB-28620	SampType:	MBLK	TestCode:	EPA Method 8015D: Gasoline Range					
Client ID:	PBS	Batch ID:	28620	RunNo:	38684					
Prep Date:	11/11/2016	Analysis Date:	11/14/2016	SeqNo:	1208386	Units:	mg/Kg			
Analyte	Result	PQL	SPK value	SPK Ref Val	%REC	LowLimit	HighLimit	%RPD	RPDLimit	Qual
Gasoline Range Organics (GRO)	ND	5.0								
Surr: BFB	860		1000		86.3	68.3	144			

Sample ID	LCS-28620	SampType:	LCS	TestCode:	EPA Method 8015D: Gasoline Range					
Client ID:	LCSS	Batch ID:	28620	RunNo:	38684					
Prep Date:	11/11/2016	Analysis Date:	11/14/2016	SeqNo:	1208395	Units:	mg/Kg			
Analyte	Result	PQL	SPK value	SPK Ref Val	%REC	LowLimit	HighLimit	%RPD	RPDLimit	Qual
Gasoline Range Organics (GRO)	24	5.0	25.00	0	95.5	74.6	123			
Surr: BFB	930		1000		93.3	68.3	144			

Qualifiers:

* Value exceeds Maximum Contaminant Level.	B Analyte detected in the associated Method Blank
D Sample Diluted Due to Matrix	E Value above quantitation range
H Holding times for preparation or analysis exceeded	J Analyte detected below quantitation limits
ND Not Detected at the Reporting Limit	P Sample pH Not In Range
R RPD outside accepted recovery limits	RL Reporting Detection Limit
S % Recovery outside of range due to dilution or matrix	W Sample container temperature is out of limit as specified

QC SUMMARY REPORT

Hall Environmental Analysis Laboratory, Inc.

WO#: 1611633

17-Nov-16

Client: Animas Environmental

Project: COPC Hudson 5M

Sample ID	MB-28620	SampType:	MBLK	TestCode:	EPA Method 8021B: Volatiles					
Client ID:	PBS	Batch ID:	28620	RunNo:	38684					
Prep Date:	11/11/2016	Analysis Date:	11/14/2016	SeqNo:	1208454	Units:	mg/Kg			
Analyte	Result	PQL	SPK value	SPK Ref Val	%REC	LowLimit	HighLimit	%RPD	RPDLimit	Qual
Benzene	ND	0.025								
Toluene	ND	0.050								
Ethylbenzene	ND	0.050								
Xylenes, Total	ND	0.10								
Surr: 4-Bromofluorobenzene	0.99		1.000		99.4	80	120			

Sample ID	LCS-28620	SampType:	LCS	TestCode:	EPA Method 8021B: Volatiles					
Client ID:	LCSS	Batch ID:	28620	RunNo:	38684					
Prep Date:	11/11/2016	Analysis Date:	11/14/2016	SeqNo:	1208455	Units:	mg/Kg			
Analyte	Result	PQL	SPK value	SPK Ref Val	%REC	LowLimit	HighLimit	%RPD	RPDLimit	Qual
Benzene	0.94	0.025	1.000	0	93.7	75.2	115			
Toluene	1.0	0.050	1.000	0	100	80.7	112			
Ethylbenzene	1.0	0.050	1.000	0	102	78.9	117			
Xylenes, Total	3.1	0.10	3.000	0	102	79.2	115			
Surr: 4-Bromofluorobenzene	1.1		1.000		111	80	120			

Qualifiers:

* Value exceeds Maximum Contaminant Level.
D Sample Diluted Due to Matrix
H Holding times for preparation or analysis exceeded
ND Not Detected at the Reporting Limit
R RPD outside accepted recovery limits
S % Recovery outside of range due to dilution or matrix

B Analyte detected in the associated Method Blank
E Value above quantitation range
J Analyte detected below quantitation limits
P Sample pH Not In Range
RL Reporting Detection Limit
W Sample container temperature is out of limit as specified



Hall Environmental Analysis Laboratory
4901 Hawkins NE
Albuquerque, NM 87109
TEL: 505-345-3975 FAX: 505-345-4107
Website: www.hallenvironmental.com

Sample Log-In Check List

Client Name: Animas Environmental

Work Order Number: 1611633

RcptNo: 1

Received by/date:	AS	11/11/16
Logged By:	Lindsay Mangin	11/11/2016 8:00:00 AM
Completed By:	Lindsay Mangin	11/11/2016 10:17:25 AM
Reviewed By:	JC	11/11/16

Chain of Custody

1. Custody seals intact on sample bottles? Yes ☐ No ☐ Not Present ☒
2. Is Chain of Custody complete? Yes ☒ No ☐ Not Present ☐
3. How was the sample delivered? Courier

Log In

4. Was an attempt made to cool the samples? Yes ☒ No ☐ NA ☐
5. Were all samples received at a temperature of $>0^{\circ}\text{C}$ to 6.0°C ? Yes ☒ No ☐ NA ☐
6. Sample(s) in proper container(s)? Yes ☒ No ☐
7. Sufficient sample volume for indicated test(s)? Yes ☒ No ☐
8. Are samples (except VOA and ONG) properly preserved? Yes ☒ No ☐
9. Was preservative added to bottles? Yes ☐ No ☒ NA ☐
10. VOA vials have zero headspace? Yes ☐ No ☐ No VOA Vials ☒
11. Were any sample containers received broken? Yes ☐ No ☒
12. Does paperwork match bottle labels?
(Note discrepancies on chain of custody) Yes ☒ No ☐
13. Are matrices correctly identified on Chain of Custody? Yes ☒ No ☐
14. Is it clear what analyses were requested? Yes ☒ No ☐
15. Were all holding times able to be met?
(If no, notify customer for authorization.) Yes ☒ No ☐

of preserved bottles checked for pH: _____
(<2 or >12 unless noted)
Adjusted? _____
Checked by: _____

Special Handling (if applicable)

16. Was client notified of all discrepancies with this order? Yes ☐ No ☐ NA ☒

Person Notified:	_____	Date:	_____
By Whom:	_____	Via:	<input type="checkbox"/> eMail <input type="checkbox"/> Phone <input type="checkbox"/> Fax <input type="checkbox"/> In Person
Regarding:	_____		
Client Instructions:	_____		

17. Additional remarks:

18. Cooler Information

Cooler No	Temp $^{\circ}\text{C}$	Condition	Seal Intact	Seal No	Seal Date	Signed By
1	1.8	Good	Yes			

<h2 style="margin: 0;">Chain-of-Custody Record</h2>				Turn-Around Time:		
Client: Animas Environmental Services, LLC				<input checked="" type="checkbox"/> Standard <input type="checkbox"/> Rush		
Mailing Address: 604 W Pinon St. Farmington, NM 87401				Project Name: COPC HUDSON 5M		
Phone #: 505-564-2281				Project #:		
Email or Fax#: clameman@animasenvironmental.com				Project Manager: C. Lameman/E. Skyles		
QA/QC Package: <input checked="" type="checkbox"/> Standard <input type="checkbox"/> Level 4 (Full Validation)				Sampler: CL/SG		
Accreditation: <input type="checkbox"/> NELAP <input type="checkbox"/> Other _____				On Ice: <input checked="" type="checkbox"/> Yes <input type="checkbox"/> No		
<input type="checkbox"/> EDD (Type) _____				Sample Temperature: 1.3°C		
Date	Time	Matrix	Sample Request ID	Container Type and #	Preservative Type	HEAL No.
11/10/16	10:00	SOIL	BGT S-1	1 - 4 oz.	cool	1611633 -001
Date:	Time:	Relinquished by:		Received by:		Date Time
11/10/16	1950	<i>[Signature]</i>		<i>[Signature]</i>		11/10/16 1950
Date:	Time:	Relinquished by:		Received by:		Date Time
11/10/16	2050	<i>[Signature]</i>		<i>[Signature]</i>		11/10/16 0800







www.hallenvironmental.com

4901 Hawkins NE - Albuquerque, NM 87109

Tel. 505-345-3975 Fax 505-345-4107

Analysis Request

[illegible]

Date:	Time:	Relinquished by:	Received by:	Date	Time
11/10/16	1950			11/10/16	1950
Date:	Time:	Relinquished by:	Received by:	Date	Time
11/10/16	2050			11/11/16	0800

Remarks: Bill to Conoco Phillips
WO # 21773140
Supervisor: Chris Neuenschwander
USERID: BRADLR
Area: 3
Ordered by: Bobby Spearman

If necessary, samples submitted to Hall Environmental may be subcontracted to other accredited laboratories. This serves as notice of this possibility. Any sub-contracted data will be clearly noted on the analytical report.



Hall Environmental Analysis Laboratory
4901 Hawkins NE
Albuquerque, NM 87109
TEL: 505-345-3975 FAX: 505-345-4107
Website: www.hallenvironmental.com

May 01, 2017

Corwin Lameman
Animas Environmental
604 Pinon Street
Farmington, NM 87401
TEL: (505) 564-2281
FAX

RE: COPC Scott 9

OrderNo.: 1704C07

Dear Corwin Lameman:

Hall Environmental Analysis Laboratory received 3 sample(s) on 4/27/2017 for the analyses presented in the following report.

These were analyzed according to EPA procedures or equivalent. To access our accredited tests please go to www.hallenvironmental.com or the state specific web sites. In order to properly interpret your results, it is imperative that you review this report in its entirety. See the sample checklist and/or the Chain of Custody for information regarding the sample receipt temperature and preservation. Data qualifiers or a narrative will be provided if the sample analysis or analytical quality control parameters require a flag. When necessary, data qualifiers are provided on both the sample analysis report and the QC summary report, both sections should be reviewed. All samples are reported, as received, unless otherwise indicated. Lab measurement of analytes considered field parameters that require analysis within 15 minutes of sampling such as pH and residual chlorine are qualified as being analyzed outside of the recommended holding time.

Please don't hesitate to contact HEAL for any additional information or clarifications.

ADHS Cert #AZ0682 -- NMED-DWB Cert #NM9425 -- NMED-Micro Cert #NM0190

Sincerely,

A handwritten signature in black ink, appearing to read "Andy Freeman", is written over a horizontal line.

Andy Freeman
Laboratory Manager
4901 Hawkins NE
Albuquerque, NM 87109

Analytical Report

Lab Order 1704C07

Date Reported: 5/1/2017

Hall Environmental Analysis Laboratory, Inc.

CLIENT: Animas Environmental

Client Sample ID: SC-1

Project: COPC Scott 9

Collection Date: 4/26/2017 9:20:00 AM

Lab ID: 1704C07-001

Matrix: MEOH (SOIL)

Received Date: 4/27/2017 7:00:00 AM

Analyses	Result	PQL	Qual	Units	DF	Date Analyzed	Batch
EPA METHOD 8015M/D: DIESEL RANGE ORGANICS							Analyst: JME
Diesel Range Organics (DRO)	23	9.4		mg/Kg	1	4/28/2017 6:05:43 PM	31473
Motor Oil Range Organics (MRO)	ND	47		mg/Kg	1	4/28/2017 6:05:43 PM	31473
Surr: DNOP	86.4	70-130		%Rec	1	4/28/2017 6:05:43 PM	31473
EPA METHOD 8015D: GASOLINE RANGE							Analyst: NSB
Gasoline Range Organics (GRO)	4.9	3.3		mg/Kg	1	4/27/2017 11:42:59 PM	G42416
Surr: BFB	153	54-150	S	%Rec	1	4/27/2017 11:42:59 PM	G42416
EPA METHOD 8021B: VOLATILES							Analyst: NSB
Benzene	ND	0.016		mg/Kg	1	4/27/2017 11:42:59 PM	B42416
Toluene	ND	0.033		mg/Kg	1	4/27/2017 11:42:59 PM	B42416
Ethylbenzene	ND	0.033		mg/Kg	1	4/27/2017 11:42:59 PM	B42416
Xylenes, Total	ND	0.065		mg/Kg	1	4/27/2017 11:42:59 PM	B42416
Surr: 4-Bromofluorobenzene	114	66.6-132		%Rec	1	4/27/2017 11:42:59 PM	B42416

Refer to the QC Summary report and sample login checklist for flagged QC data and preservation information.

Qualifiers:	*	Value exceeds Maximum Contaminant Level.	B	Analyte detected in the associated Method Blank
	D	Sample Diluted Due to Matrix	E	Value above quantitation range
	H	Holding times for preparation or analysis exceeded	J	Analyte detected below quantitation limits
	ND	Not Detected at the Reporting Limit	P	Sample pH Not In Range
	R	RPD outside accepted recovery limits	RL	Reporting Detection Limit
	S	% Recovery outside of range due to dilution or matrix	W	Sample container temperature is out of limit as specified

Hall Environmental Analysis Laboratory, Inc.

CLIENT: Animas Environmental

Client Sample ID: SC-2

Project: COPC Scott 9

Collection Date: 4/26/2017 9:30:00 AM

Lab ID: 1704C07-002

Matrix: MEOH (SOIL)

Received Date: 4/27/2017 7:00:00 AM

Analyses	Result	PQL	Qual	Units	DF	Date Analyzed	Batch
EPA METHOD 8015M/D: DIESEL RANGE ORGANICS							Analyst: JME
Diesel Range Organics (DRO)	ND	9.3		mg/Kg	1	4/28/2017 7:27:03 PM	31473
Motor Oil Range Organics (MRO)	ND	46		mg/Kg	1	4/28/2017 7:27:03 PM	31473
Surr: DNOP	88.1	70-130		%Rec	1	4/28/2017 7:27:03 PM	31473
EPA METHOD 8015D: GASOLINE RANGE							Analyst: NSB
Gasoline Range Organics (GRO)	ND	3.2		mg/Kg	1	4/28/2017 12:31:13 AM	G42416
Surr: BFB	100	54-150		%Rec	1	4/28/2017 12:31:13 AM	G42416
EPA METHOD 8021B: VOLATILES							Analyst: NSB
Benzene	ND	0.016		mg/Kg	1	4/28/2017 12:31:13 AM	B42416
Toluene	ND	0.032		mg/Kg	1	4/28/2017 12:31:13 AM	B42416
Ethylbenzene	ND	0.032		mg/Kg	1	4/28/2017 12:31:13 AM	B42416
Xylenes, Total	ND	0.064		mg/Kg	1	4/28/2017 12:31:13 AM	B42416
Surr: 4-Bromofluorobenzene	106	66.6-132		%Rec	1	4/28/2017 12:31:13 AM	B42416

Refer to the QC Summary report and sample login checklist for flagged QC data and preservation information.

Qualifiers:	*	Value exceeds Maximum Contaminant Level.	B	Analyte detected in the associated Method Blank	Page 2 of 6
	D	Sample Diluted Due to Matrix	E	Value above quantitation range	
	H	Holding times for preparation or analysis exceeded	J	Analyte detected below quantitation limits	
	ND	Not Detected at the Reporting Limit	P	Sample pH Not In Range	
	R	RPD outside accepted recovery limits	RL	Reporting Detection Limit	
	S	% Recovery outside of range due to dilution or matrix	W	Sample container temperature is out of limit as specified	

Hall Environmental Analysis Laboratory, Inc.

CLIENT: Animas Environmental

Client Sample ID: SC-3

Project: COPC Scott 9

Collection Date: 4/26/2017 9:40:00 AM

Lab ID: 1704C07-003

Matrix: MEOH (SOIL)

Received Date: 4/27/2017 7:00:00 AM

Analyses	Result	PQL	Qual	Units	DF	Date Analyzed	Batch
EPA METHOD 8015M/D: DIESEL RANGE ORGANICS							Analyst: JME
Diesel Range Organics (DRO)	13	9.7		mg/Kg	1	4/28/2017 7:54:05 PM	31473
Motor Oil Range Organics (MRO)	ND	48		mg/Kg	1	4/28/2017 7:54:05 PM	31473
Surr: DNOP	86.7	70-130		%Rec	1	4/28/2017 7:54:05 PM	31473
EPA METHOD 8015D: GASOLINE RANGE							Analyst: NSB
Gasoline Range Organics (GRO)	ND	2.8		mg/Kg	1	4/28/2017 12:55:15 AM	G42416
Surr: BFB	110	54-150		%Rec	1	4/28/2017 12:55:15 AM	G42416
EPA METHOD 8021B: VOLATILES							Analyst: NSB
Benzene	ND	0.014		mg/Kg	1	4/28/2017 12:55:15 AM	B42416
Toluene	ND	0.028		mg/Kg	1	4/28/2017 12:55:15 AM	B42416
Ethylbenzene	ND	0.028		mg/Kg	1	4/28/2017 12:55:15 AM	B42416
Xylenes, Total	ND	0.055		mg/Kg	1	4/28/2017 12:55:15 AM	B42416
Surr: 4-Bromofluorobenzene	107	66.6-132		%Rec	1	4/28/2017 12:55:15 AM	B42416

Refer to the QC Summary report and sample login checklist for flagged QC data and preservation information.

Qualifiers:	*	Value exceeds Maximum Contaminant Level.	B	Analyte detected in the associated Method Blank
	D	Sample Diluted Due to Matrix	E	Value above quantitation range
	H	Holding times for preparation or analysis exceeded	J	Analyte detected below quantitation limits
	ND	Not Detected at the Reporting Limit	P	Sample pH Not In Range
	R	RPD outside accepted recovery limits	RL	Reporting Detection Limit
	S	% Recovery outside of range due to dilution or matrix	W	Sample container temperature is out of limit as specified

QC SUMMARY REPORT

Hall Environmental Analysis Laboratory, Inc.

WO#: 1704C07

01-May-17

Client: Animas Environmental

Project: COPC Scott 9

Sample ID	MB-31481	SampType:	MBLK	TestCode:	EPA Method 8015M/D: Diesel Range Organics					
Client ID:	PBS	Batch ID:	31481	RunNo:	42424					
Prep Date:	4/28/2017	Analysis Date:	4/28/2017	SeqNo:	1333940	Units:	%Rec			
Analyte	Result	PQL	SPK value	SPK Ref Val	%REC	LowLimit	HighLimit	%RPD	RPDLimit	Qual
Surr: DNOP	8.8		10.00		88.3	70	130			

Sample ID	LCS-31481	SampType:	LCS	TestCode:	EPA Method 8015M/D: Diesel Range Organics					
Client ID:	LCSS	Batch ID:	31481	RunNo:	42424					
Prep Date:	4/28/2017	Analysis Date:	4/28/2017	SeqNo:	1333970	Units:	%Rec			
Analyte	Result	PQL	SPK value	SPK Ref Val	%REC	LowLimit	HighLimit	%RPD	RPDLimit	Qual
Surr: DNOP	4.5		5.000		89.8	70	130			

Sample ID	1704C07-001AMS	SampType:	MS	TestCode:	EPA Method 8015M/D: Diesel Range Organics					
Client ID:	SC-1	Batch ID:	31473	RunNo:	42424					
Prep Date:	4/27/2017	Analysis Date:	4/28/2017	SeqNo:	1334727	Units:	mg/Kg			
Analyte	Result	PQL	SPK value	SPK Ref Val	%REC	LowLimit	HighLimit	%RPD	RPDLimit	Qual
Diesel Range Organics (DRO)	73	10	50.30	23.19	99.1	51.6	130			
Surr: DNOP	4.7		5.030		93.0	70	130			

Sample ID	1704C07-001AMSD	SampType:	MSD	TestCode:	EPA Method 8015M/D: Diesel Range Organics					
Client ID:	SC-1	Batch ID:	31473	RunNo:	42424					
Prep Date:	4/27/2017	Analysis Date:	4/28/2017	SeqNo:	1334729	Units:	mg/Kg			
Analyte	Result	PQL	SPK value	SPK Ref Val	%REC	LowLimit	HighLimit	%RPD	RPDLimit	Qual
Diesel Range Organics (DRO)	68	9.8	48.92	23.19	92.0	51.6	130	6.87	20	
Surr: DNOP	4.6		4.892		93.5	70	130	0	0	

Qualifiers:

- * Value exceeds Maximum Contaminant Level.
- D Sample Diluted Due to Matrix
- H Holding times for preparation or analysis exceeded
- ND Not Detected at the Reporting Limit
- R RPD outside accepted recovery limits
- S % Recovery outside of range due to dilution or matrix

- B Analyte detected in the associated Method Blank
- E Value above quantitation range
- J Analyte detected below quantitation limits
- P Sample pH Not In Range
- RL Reporting Detection Limit
- W Sample container temperature is out of limit as specified

QC SUMMARY REPORT

Hall Environmental Analysis Laboratory, Inc.

WO#: 1704C07

01-May-17

Client: Animas Environmental

Project: COPC Scott 9

Sample ID	RB	SampType:	MBLK	TestCode:	EPA Method 8015D: Gasoline Range					
Client ID:	PBS	Batch ID:	G42416	RunNo:	42416					
Prep Date:		Analysis Date:	4/27/2017	SeqNo:	1333745	Units:	mg/Kg			
Analyte	Result	PQL	SPK value	SPK Ref Val	%REC	LowLimit	HighLimit	%RPD	RPDLimit	Qual
Gasoline Range Organics (GRO)	ND	5.0								
Surr: BFB	1200		1000		116	54	150			

Sample ID	2.5UG GRO LCS	SampType:	LCS	TestCode:	EPA Method 8015D: Gasoline Range					
Client ID:	LCSS	Batch ID:	G42416	RunNo:	42416					
Prep Date:		Analysis Date:	4/27/2017	SeqNo:	1333746	Units:	mg/Kg			
Analyte	Result	PQL	SPK value	SPK Ref Val	%REC	LowLimit	HighLimit	%RPD	RPDLimit	Qual
Gasoline Range Organics (GRO)	26	5.0	25.00	0	103	76.4	125			
Surr: BFB	1200		1000		115	54	150			

Qualifiers:

* Value exceeds Maximum Contaminant Level.	B Analyte detected in the associated Method Blank
D Sample Diluted Due to Matrix	E Value above quantitation range
H Holding times for preparation or analysis exceeded	J Analyte detected below quantitation limits
ND Not Detected at the Reporting Limit	P Sample pH Not In Range
R RPD outside accepted recovery limits	RL Reporting Detection Limit
S % Recovery outside of range due to dilution or matrix	W Sample container temperature is out of limit as specified

QC SUMMARY REPORT

Hall Environmental Analysis Laboratory, Inc.

WO#: 1704C07

01-May-17

Client: Animas Environmental

Project: COPC Scott 9

Sample ID	RB	SampType:	MBLK	TestCode:	EPA Method 8021B: Volatiles					
Client ID:	PBS	Batch ID:	B42416	RunNo:	42416					
Prep Date:		Analysis Date:	4/27/2017	SeqNo:	1333768	Units:	mg/Kg			
Analyte	Result	PQL	SPK value	SPK Ref Val	%REC	LowLimit	HighLimit	%RPD	RPDLimit	Qual
Benzene	ND	0.025								
Toluene	ND	0.050								
Ethylbenzene	ND	0.050								
Xylenes, Total	ND	0.10								
Surr: 4-Bromofluorobenzene	1.3		1.000		128	66.6	132			

Sample ID	100NG BTEX LCS	SampType:	LCS	TestCode:	EPA Method 8021B: Volatiles					
Client ID:	LCSS	Batch ID:	B42416	RunNo:	42416					
Prep Date:		Analysis Date:	4/27/2017	SeqNo:	1333819	Units:	mg/Kg			
Analyte	Result	PQL	SPK value	SPK Ref Val	%REC	LowLimit	HighLimit	%RPD	RPDLimit	Qual
Benzene	0.94	0.025	1.000	0	93.7	80	120			
Toluene	0.95	0.050	1.000	0	94.9	80	120			
Ethylbenzene	0.95	0.050	1.000	0	95.4	80	120			
Xylenes, Total	2.9	0.10	3.000	0	96.7	80	120			
Surr: 4-Bromofluorobenzene	1.2		1.000		119	66.6	132			

Qualifiers:

* Value exceeds Maximum Contaminant Level.
D Sample Diluted Due to Matrix
H Holding times for preparation or analysis exceeded
ND Not Detected at the Reporting Limit
R RPD outside accepted recovery limits
S % Recovery outside of range due to dilution or matrix

B Analyte detected in the associated Method Blank
E Value above quantitation range
J Analyte detected below quantitation limits
P Sample pH Not In Range
RL Reporting Detection Limit
W Sample container temperature is out of limit as specified

Sample Log-In Check List

Client Name: Animas Environmental

Work Order Number: 1704C07

RcptNo: 1

Received By: Sophia Campuzano 4/27/2017 7:00:00 AM

Completed By: Lindsay Mangin 4/27/2017 8:05:18 AM

Reviewed By: *see* 04/27/17

Sophia Campuzano

Lindsay Mangin

Chain of Custody

- | | | | |
|--|---|----|---|
| 1. Custody seals intact on sample bottles? | Yes | No | Not Present <input checked="" type="checkbox"/> |
| 2. Is Chain of Custody complete? | Yes <input checked="" type="checkbox"/> | No | Not Present |
| 3. How was the sample delivered? | Courier | | |

Log In

- | | | | |
|---|---|--|--|
| 4. Was an attempt made to cool the samples? | Yes <input checked="" type="checkbox"/> | No | NA |
| 5. Were all samples received at a temperature of >0° C to 6.0°C | Yes <input checked="" type="checkbox"/> | No | NA |
| 6. Sample(s) in proper container(s)? | Yes <input checked="" type="checkbox"/> | No | |
| 7. Sufficient sample volume for indicated test(s)? | Yes <input checked="" type="checkbox"/> | No | |
| 8. Are samples (except VOA and ONG) properly preserved? | Yes <input checked="" type="checkbox"/> | No | |
| 9. Was preservative added to bottles? | Yes | No <input checked="" type="checkbox"/> | NA |
| 10. VOA vials have zero headspace? | Yes | No | No VOA Vials <input checked="" type="checkbox"/> |
| 11. Were any sample containers received broken? | Yes | No <input checked="" type="checkbox"/> | # of preserved bottles checked for pH: |
| 12. Does paperwork match bottle labels?
(Note discrepancies on chain of custody) | Yes <input checked="" type="checkbox"/> | No | (<2 or >12 unless noted) |
| 13. Are matrices correctly identified on Chain of Custody? | Yes <input checked="" type="checkbox"/> | No | Adjusted? |
| 14. Is it clear what analyses were requested? | Yes <input checked="" type="checkbox"/> | No | |
| 15. Were all holding times able to be met?
(If no, notify customer for authorization.) | Yes <input checked="" type="checkbox"/> | No | Checked by: |

Special Handling (if applicable)

- | | | | |
|---|-----|----|--|
| 16. Was client notified of all discrepancies with this order? | Yes | No | NA <input checked="" type="checkbox"/> |
|---|-----|----|--|

Person Notified:

Date:

By Whom:

Via:

eMail

Phone

Fax

In Person

Regarding:

Client Instructions:

17. Additional remarks:

18. Cooler Information

Cooler No	Temp °C	Condition	Seal Intact	Seal No	Seal Date	Signed By
1	4.6	Good	Yes			

If necessary, samples submitted to Wall Environmental may be substituted for other certified laboratories. This covers an action of this responsibility. As a its substituted date will be stated, substituted as the ...



Hall Environmental Analysis Laboratory
4901 Hawkins NE
Albuquerque, NM 87109
TEL: 505-345-3975 FAX: 505-345-4107
Website: www.hallenvironmental.com

May 16, 2017

Corwin Lameman
Animas Environmental
604 Pinon Street
Farmington, NM 87401
TEL: (505) 564-2281
FAX

RE: COPC Scott 9

OrderNo.: 1705588

Dear Corwin Lameman:

Hall Environmental Analysis Laboratory received 2 sample(s) on 5/11/2017 for the analyses presented in the following report.

These were analyzed according to EPA procedures or equivalent. To access our accredited tests please go to www.hallenvironmental.com or the state specific web sites. In order to properly interpret your results, it is imperative that you review this report in its entirety. See the sample checklist and/or the Chain of Custody for information regarding the sample receipt temperature and preservation. Data qualifiers or a narrative will be provided if the sample analysis or analytical quality control parameters require a flag. When necessary, data qualifiers are provided on both the sample analysis report and the QC summary report, both sections should be reviewed. All samples are reported, as received, unless otherwise indicated. Lab measurement of analytes considered field parameters that require analysis within 15 minutes of sampling such as pH and residual chlorine are qualified as being analyzed outside of the recommended holding time.

Please don't hesitate to contact HEAL for any additional information or clarifications.

ADHS Cert #AZ0682 -- NMED-DWB Cert #NM9425 -- NMED-Micro Cert #NM0190

Sincerely,

A handwritten signature in black ink, appearing to read "Andy Freeman".

Andy Freeman
Laboratory Manager
4901 Hawkins NE
Albuquerque, NM 87109

Analytical Report

Lab Order 1705588

Date Reported: 5/16/2017

Hall Environmental Analysis Laboratory, Inc.

CLIENT: Animas Environmental

Client Sample ID: SC-6

Project: COPC Scott 9

Collection Date: 5/10/2017 9:40:00 AM

Lab ID: 1705588-001

Matrix: SOIL

Received Date: 5/11/2017 7:20:00 AM

Analyses	Result	PQL	Qual	Units	DF	Date Analyzed	Batch
EPA METHOD 8015M/D: DIESEL RANGE ORGANICS							Analyst: TOM
Diesel Range Organics (DRO)	120	9.4		mg/Kg	1	5/15/2017 11:06:04 AM	31684
Motor Oil Range Organics (MRO)	ND	47		mg/Kg	1	5/15/2017 11:06:04 AM	31684
Surr: DNOP	84.6	70-130		%Rec	1	5/15/2017 11:06:04 AM	31684
EPA METHOD 8015D: GASOLINE RANGE							Analyst: NSB
Gasoline Range Organics (GRO)	140	16		mg/Kg	5	5/11/2017 8:57:04 PM	31671
Surr: BFB	460	54-150	S	%Rec	5	5/11/2017 8:57:04 PM	31671
EPA METHOD 8021B: VOLATILES							Analyst: NSB
Benzene	ND	0.078		mg/Kg	5	5/11/2017 8:57:04 PM	31671
Toluene	0.32	0.16		mg/Kg	5	5/11/2017 8:57:04 PM	31671
Ethylbenzene	ND	0.16		mg/Kg	5	5/11/2017 8:57:04 PM	31671
Xylenes, Total	1.4	0.31		mg/Kg	5	5/11/2017 8:57:04 PM	31671
Surr: 4-Bromofluorobenzene	127	66.6-132		%Rec	5	5/11/2017 8:57:04 PM	31671

Refer to the QC Summary report and sample login checklist for flagged QC data and preservation information.

Qualifiers:	*	Value exceeds Maximum Contaminant Level.	B	Analyte detected in the associated Method Blank
	D	Sample Diluted Due to Matrix	E	Value above quantitation range
	H	Holding times for preparation or analysis exceeded	J	Analyte detected below quantitation limits
	ND	Not Detected at the Reporting Limit	P	Sample pH Not In Range
	R	RPD outside accepted recovery limits	RL	Reporting Detection Limit
	S	% Recovery outside of range due to dilution or matrix	W	Sample container temperature is out of limit as specified

Hall Environmental Analysis Laboratory, Inc.

Analytical Report

Lab Order 1705588

Date Reported: 5/16/2017

CLIENT: Animas Environmental

Client Sample ID: SC-7

Project: COPC Scott 9

Collection Date: 5/10/2017 9:55:00 AM

Lab ID: 1705588-002

Matrix: SOIL

Received Date: 5/11/2017 7:20:00 AM

Analyses	Result	PQL	Qual	Units	DF	Date Analyzed	Batch
EPA METHOD 8015M/D: DIESEL RANGE ORGANICS							Analyst: TOM
Diesel Range Organics (DRO)	ND	9.7		mg/Kg	1	5/15/2017 11:30:41 AM	31684
Motor Oil Range Organics (MRO)	ND	49		mg/Kg	1	5/15/2017 11:30:41 AM	31684
Surr: DNOP	83.6	70-130		%Rec	1	5/15/2017 11:30:41 AM	31684
EPA METHOD 8015D: GASOLINE RANGE							Analyst: NSB
Gasoline Range Organics (GRO)	18	2.8		mg/Kg	1	5/11/2017 9:44:36 PM	31671
Surr: BFB	338	54-150	S	%Rec	1	5/11/2017 9:44:36 PM	31671
EPA METHOD 8021B: VOLATILES							Analyst: NSB
Benzene	ND	0.014		mg/Kg	1	5/11/2017 9:44:36 PM	31671
Toluene	0.046	0.028		mg/Kg	1	5/11/2017 9:44:36 PM	31671
Ethylbenzene	ND	0.028		mg/Kg	1	5/11/2017 9:44:36 PM	31671
Xylenes, Total	0.20	0.056		mg/Kg	1	5/11/2017 9:44:36 PM	31671
Surr: 4-Bromofluorobenzene	119	66.6-132		%Rec	1	5/11/2017 9:44:36 PM	31671

Refer to the QC Summary report and sample login checklist for flagged QC data and preservation information.

Qualifiers:	*	Value exceeds Maximum Contaminant Level.	B	Analyte detected in the associated Method Blank
	D	Sample Diluted Due to Matrix	E	Value above quantitation range
	H	Holding times for preparation or analysis exceeded	J	Analyte detected below quantitation limits
	ND	Not Detected at the Reporting Limit	P	Sample pH Not In Range
	R	RPD outside accepted recovery limits	RL	Reporting Detection Limit
	S	% Recovery outside of range due to dilution or matrix	W	Sample container temperature is out of limit as specified

QC SUMMARY REPORT

Hall Environmental Analysis Laboratory, Inc.

WO#: 1705588

16-May-17

Client: Animas Environmental

Project: COPC Scott 9

Sample ID	LCS-31684	SampType:	LCS	TestCode:	EPA Method 8015M/D: Diesel Range Organics					
Client ID:	LCSS	Batch ID:	31684	RunNo:	42745					
Prep Date:	5/11/2017	Analysis Date:	5/12/2017	SeqNo:	1345195	Units:	mg/Kg			
Analyte	Result	PQL	SPK value	SPK Ref Val	%REC	LowLimit	HighLimit	%RPD	RPDLimit	Qual
Diesel Range Organics (DRO)	49	10	50.00	0	97.3	63.8	116			
Surr: DNOP	4.9		5.000		97.9	70	130			

Sample ID	MB-31684	SampType:	MBLK	TestCode:	EPA Method 8015M/D: Diesel Range Organics					
Client ID:	PBS	Batch ID:	31684	RunNo:	42745					
Prep Date:	5/11/2017	Analysis Date:	5/12/2017	SeqNo:	1345196	Units:	mg/Kg			
Analyte	Result	PQL	SPK value	SPK Ref Val	%REC	LowLimit	HighLimit	%RPD	RPDLimit	Qual
Diesel Range Organics (DRO)	ND	10								
Motor Oil Range Organics (MRO)	ND	50								
Surr: DNOP	10		10.00		103	70	130			

Qualifiers:

* Value exceeds Maximum Contaminant Level.	B Analyte detected in the associated Method Blank
D Sample Diluted Due to Matrix	E Value above quantitation range
H Holding times for preparation or analysis exceeded	J Analyte detected below quantitation limits
ND Not Detected at the Reporting Limit	P Sample pH Not In Range
R RPD outside accepted recovery limits	RL Reporting Detection Limit
S % Recovery outside of range due to dilution or matrix	W Sample container temperature is out of limit as specified

QC SUMMARY REPORT

Hall Environmental Analysis Laboratory, Inc.

WO#: 1705588

16-May-17

Client: Animas Environmental

Project: COPC Scott 9

Sample ID	MB-31671	SampType:	MBLK	TestCode:	EPA Method 8015D: Gasoline Range					
Client ID:	PBS	Batch ID:	31671	RunNo:	42718					
Prep Date:	5/10/2017	Analysis Date:	5/11/2017	SeqNo:	1344416	Units:	mg/Kg			
Analyte	Result	PQL	SPK value	SPK Ref Val	%REC	LowLimit	HighLimit	%RPD	RPDLimit	Qual
Gasoline Range Organics (GRO)	ND	5.0								
Surr: BFB	1000		1000		100	54	150			

Sample ID	LCS-31671	SampType:	LCS	TestCode:	EPA Method 8015D: Gasoline Range					
Client ID:	LCSS	Batch ID:	31671	RunNo:	42718					
Prep Date:	5/10/2017	Analysis Date:	5/11/2017	SeqNo:	1344417	Units:	mg/Kg			
Analyte	Result	PQL	SPK value	SPK Ref Val	%REC	LowLimit	HighLimit	%RPD	RPDLimit	Qual
Gasoline Range Organics (GRO)	24	5.0	25.00	0	97.1	76.4	125			
Surr: BFB	1100		1000		106	54	150			

Qualifiers:

* Value exceeds Maximum Contaminant Level.	B Analyte detected in the associated Method Blank
D Sample Diluted Due to Matrix	E Value above quantitation range
H Holding times for preparation or analysis exceeded	J Analyte detected below quantitation limits
ND Not Detected at the Reporting Limit	P Sample pH Not In Range
R RPD outside accepted recovery limits	RL Reporting Detection Limit
S % Recovery outside of range due to dilution or matrix	W Sample container temperature is out of limit as specified

QC SUMMARY REPORT

Hall Environmental Analysis Laboratory, Inc.

WO#: 1705588

16-May-17

Client: Animas Environmental

Project: COPC Scott 9

Sample ID	MB-31671	SampType:	MBLK	TestCode:	EPA Method 8021B: Volatiles					
Client ID:	PBS	Batch ID:	31671	RunNo:	42718					
Prep Date:	5/10/2017	Analysis Date:	5/11/2017	SeqNo:	1344435	Units:	mg/Kg			
Analyte	Result	PQL	SPK value	SPK Ref Val	%REC	LowLimit	HighLimit	%RPD	RPDLimit	Qual
Benzene	ND	0.025								
Toluene	ND	0.050								
Ethylbenzene	ND	0.050								
Xylenes, Total	ND	0.10								
Surr: 4-Bromofluorobenzene	1.1		1.000		114	66.6	132			

Sample ID	LCS-31671	SampType:	LCS	TestCode:	EPA Method 8021B: Volatiles					
Client ID:	LCSS	Batch ID:	31671	RunNo:	42718					
Prep Date:	5/10/2017	Analysis Date:	5/11/2017	SeqNo:	1344436	Units:	mg/Kg			
Analyte	Result	PQL	SPK value	SPK Ref Val	%REC	LowLimit	HighLimit	%RPD	RPDLimit	Qual
Benzene	1.0	0.025	1.000	0	99.8	80	120			
Toluene	1.0	0.050	1.000	0	99.6	80	120			
Ethylbenzene	1.0	0.050	1.000	0	101	80	120			
Xylenes, Total	3.1	0.10	3.000	0	103	80	120			
Surr: 4-Bromofluorobenzene	1.1		1.000		112	66.6	132			

Qualifiers:

* Value exceeds Maximum Contaminant Level.	B Analyte detected in the associated Method Blank
D Sample Diluted Due to Matrix	E Value above quantitation range
H Holding times for preparation or analysis exceeded	J Analyte detected below quantitation limits
ND Not Detected at the Reporting Limit	P Sample pH Not In Range
R RPD outside accepted recovery limits	RL Reporting Detection Limit
S % Recovery outside of range due to dilution or matrix	W Sample container temperature is out of limit as specified



Hall Environmental Analysis Laboratory
4901 Hawkins NE
Albuquerque, NM 87109
TEL: 505-345-3975 FAX: 505-345-4107
Website: www.hallenvironmental.com

Sample Log-In Check List

Client Name: Animas Environmental

Work Order Number: 1705588

RcptNo: 1

Received By: Anne Thorne

5/11/2017 7:20:00 AM

Anne Thorne

Completed By: Anne Thorne

5/11/2017 7:48:17 AM

Anne Thorne

Reviewed By: ENM

05/11/17

Chain of Custody

1. Custody seals intact on sample bottles? Yes ☐ No ☐ Not Present ☒
2. Is Chain of Custody complete? Yes ☒ No ☐ Not Present ☐
3. How was the sample delivered? Courier

Log In

4. Was an attempt made to cool the samples? Yes ☒ No ☐ NA ☐
5. Were all samples received at a temperature of $>0^{\circ}\text{C}$ to 6.0°C ? Yes ☒ No ☐ NA ☐
6. Sample(s) in proper container(s)? Yes ☒ No ☐
7. Sufficient sample volume for indicated test(s)? Yes ☒ No ☐
8. Are samples (except VOA and ONG) properly preserved? Yes ☒ No ☐
9. Was preservative added to bottles? Yes ☐ No ☒ NA ☐
10. VOA vials have zero headspace? Yes ☐ No ☐ No VOA Vials ☒
11. Were any sample containers received broken? Yes ☐ No ☒
12. Does paperwork match bottle labels?
(Note discrepancies on chain of custody) Yes ☒ No ☐
13. Are matrices correctly identified on Chain of Custody? Yes ☒ No ☐
14. Is it clear what analyses were requested? Yes ☒ No ☐
15. Were all holding times able to be met?
(If no, notify customer for authorization.) Yes ☒ No ☐
- # of preserved bottles checked for pH: _____
(<2 or >12 unless noted)

Adjusted? _____

Checked by: _____

Special Handling (if applicable)

16. Was client notified of all discrepancies with this order? Yes ☐ No ☐ NA ☒

Person Notified:		Date:	
By Whom:		Via:	<input type="checkbox"/> eMail <input type="checkbox"/> Phone <input type="checkbox"/> Fax <input type="checkbox"/> In Person
Regarding:			
Client Instructions:			

17. Additional remarks:

18. Cooler Information

Cooler No	Temp °C	Condition	Seal Intact	Seal No	Seal Date	Signed By
1	1.0	Good	Yes			



Hall Environmental Analysis Laboratory
4901 Hawkins NE
Albuquerque, NM 87109
TEL: 505-345-3975 FAX: 505-345-4107
Website: www.hallenvironmental.com

July 19, 2017

Elizabeth McNally

Animas Environmental Services

604 Pinon Street

Farmington, NM 87401

TEL:

FAX

RE: COPC Scott 9

OrderNo.: 1707842

Dear Elizabeth McNally:

Hall Environmental Analysis Laboratory received 3 sample(s) on 7/18/2017 for the analyses presented in the following report.

These were analyzed according to EPA procedures or equivalent. To access our accredited tests please go to www.hallenvironmental.com or the state specific web sites. In order to properly interpret your results, it is imperative that you review this report in its entirety. See the sample checklist and/or the Chain of Custody for information regarding the sample receipt temperature and preservation. Data qualifiers or a narrative will be provided if the sample analysis or analytical quality control parameters require a flag. When necessary, data qualifiers are provided on both the sample analysis report and the QC summary report, both sections should be reviewed. All samples are reported, as received, unless otherwise indicated. Lab measurement of analytes considered field parameters that require analysis within 15 minutes of sampling such as pH and residual chlorine are qualified as being analyzed outside of the recommended holding time.

Please don't hesitate to contact HEAL for any additional information or clarifications.

ADHS Cert #AZ0682 -- NMED-DWB Cert #NM9425 -- NMED-Micro Cert #NM0190

Sincerely,

A handwritten signature in black ink, appearing to read "Andy Freeman", is written over a horizontal line.

Andy Freeman

Laboratory Manager

4901 Hawkins NE

Albuquerque, NM 87109

Hall Environmental Analysis Laboratory, Inc.**CLIENT:** Animas Environmental Services**Client Sample ID:** SC-5**Project:** COPC Scott 9**Collection Date:** 7/17/2017 10:25:00 AM**Lab ID:** 1707842-001**Matrix:** SOIL**Received Date:** 7/18/2017 7:00:00 AM

Analyses	Result	PQL	Qual	Units	DF	Date Analyzed	Batch
EPA METHOD 8015M/D: DIESEL RANGE ORGANICS							Analyst: TOM
Diesel Range Organics (DRO)	ND	9.9		mg/Kg	1	7/18/2017 11:20:04 AM	32851
Motor Oil Range Organics (MRO)	ND	49		mg/Kg	1	7/18/2017 11:20:04 AM	32851
Surr: DNOP	88.8	70-130		%Rec	1	7/18/2017 11:20:04 AM	32851
EPA METHOD 8015D: GASOLINE RANGE							Analyst: NSB
Gasoline Range Organics (GRO)	ND	3.8		mg/Kg	1	7/18/2017 10:57:54 AM	32828
Surr: BFB	100	54-150		%Rec	1	7/18/2017 10:57:54 AM	32828
EPA METHOD 8021B: VOLATILES							Analyst: NSB
Benzene	ND	0.019		mg/Kg	1	7/18/2017 10:57:54 AM	32828
Toluene	ND	0.038		mg/Kg	1	7/18/2017 10:57:54 AM	32828
Ethylbenzene	ND	0.038		mg/Kg	1	7/18/2017 10:57:54 AM	32828
Xylenes, Total	ND	0.076		mg/Kg	1	7/18/2017 10:57:54 AM	32828
Surr: 4-Bromofluorobenzene	111	66.6-132		%Rec	1	7/18/2017 10:57:54 AM	32828

Refer to the QC Summary report and sample login checklist for flagged QC data and preservation information.

Qualifiers:	*	Value exceeds Maximum Contaminant Level.	B	Analyte detected in the associated Method Blank
	D	Sample Diluted Due to Matrix	E	Value above quantitation range
	H	Holding times for preparation or analysis exceeded	J	Analyte detected below quantitation limits
	ND	Not Detected at the Reporting Limit	P	Sample pH Not In Range
	PQL	Practical Quantitative Limit	RL	Reporting Detection Limit
	S	% Recovery outside of range due to dilution or matrix	W	Sample container temperature is out of limit as specified

Analytical Report

Lab Order 1707842

Date Reported: 7/19/2017

Hall Environmental Analysis Laboratory, Inc.

CLIENT: Animas Environmental Services

Client Sample ID: SC-8

Project: COPC Scott 9

Collection Date: 7/17/2017 10:30:00 AM

Lab ID: 1707842-002

Matrix: SOIL

Received Date: 7/18/2017 7:00:00 AM

Analyses	Result	PQL	Qual	Units	DF	Date Analyzed	Batch
EPA METHOD 8015M/D: DIESEL RANGE ORGANICS							Analyst: TOM
Diesel Range Organics (DRO)	ND	9.6		mg/Kg	1	7/18/2017 11:48:14 AM	32851
Motor Oil Range Organics (MRO)	ND	48		mg/Kg	1	7/18/2017 11:48:14 AM	32851
Surr: DNOP	87.7	70-130		%Rec	1	7/18/2017 11:48:14 AM	32851
EPA METHOD 8015D: GASOLINE RANGE							Analyst: NSB
Gasoline Range Organics (GRO)	ND	16		mg/Kg	5	7/18/2017 11:21:34 AM	32828
Surr: BFB	102	54-150		%Rec	5	7/18/2017 11:21:34 AM	32828
EPA METHOD 8021B: VOLATILES							Analyst: NSB
Benzene	ND	0.082		mg/Kg	5	7/18/2017 11:21:34 AM	32828
Toluene	ND	0.16		mg/Kg	5	7/18/2017 11:21:34 AM	32828
Ethylbenzene	ND	0.16		mg/Kg	5	7/18/2017 11:21:34 AM	32828
Xylenes, Total	ND	0.33		mg/Kg	5	7/18/2017 11:21:34 AM	32828
Surr: 4-Bromofluorobenzene	112	66.6-132		%Rec	5	7/18/2017 11:21:34 AM	32828

Refer to the QC Summary report and sample login checklist for flagged QC data and preservation information.

Qualifiers:	*	Value exceeds Maximum Contaminant Level.	B	Analyte detected in the associated Method Blank
	D	Sample Diluted Due to Matrix	E	Value above quantitation range
	H	Holding times for preparation or analysis exceeded	J	Analyte detected below quantitation limits
	ND	Not Detected at the Reporting Limit	P	Sample pH Not In Range
	PQL	Practical Quantitative Limit	RL	Reporting Detection Limit
	S	% Recovery outside of range due to dilution or matrix	W	Sample container temperature is out of limit as specified

Analytical Report

Lab Order 1707842

Date Reported: 7/19/2017

Hall Environmental Analysis Laboratory, Inc.

CLIENT: Animas Environmental Services

Client Sample ID: SC-9

Project: COPC Scott 9

Collection Date: 7/17/2017 11:35:00 AM

Lab ID: 1707842-003

Matrix: SOIL

Received Date: 7/18/2017 7:00:00 AM

Analyses	Result	PQL	Qual	Units	DF	Date Analyzed	Batch
EPA METHOD 8015M/D: DIESEL RANGE ORGANICS							Analyst: TOM
Diesel Range Organics (DRO)	25	9.7		mg/Kg	1	7/18/2017 12:16:18 PM	32851
Motor Oil Range Organics (MRO)	ND	49		mg/Kg	1	7/18/2017 12:16:18 PM	32851
Surr: DNOP	88.9	70-130		%Rec	1	7/18/2017 12:16:18 PM	32851
EPA METHOD 8015D: GASOLINE RANGE							Analyst: NSB
Gasoline Range Organics (GRO)	67	18		mg/Kg	5	7/18/2017 11:45:13 AM	32828
Surr: BFB	187	54-150	S	%Rec	5	7/18/2017 11:45:13 AM	32828
EPA METHOD 8021B: VOLATILES							Analyst: NSB
Benzene	ND	0.092		mg/Kg	5	7/18/2017 11:45:13 AM	32828
Toluene	0.28	0.18		mg/Kg	5	7/18/2017 11:45:13 AM	32828
Ethylbenzene	ND	0.18		mg/Kg	5	7/18/2017 11:45:13 AM	32828
Xylenes, Total	1.7	0.37		mg/Kg	5	7/18/2017 11:45:13 AM	32828
Surr: 4-Bromofluorobenzene	120	66.6-132		%Rec	5	7/18/2017 11:45:13 AM	32828

Refer to the QC Summary report and sample login checklist for flagged QC data and preservation information.

Qualifiers:	* Value exceeds Maximum Contaminant Level.	B Analyte detected in the associated Method Blank
	D Sample Diluted Due to Matrix	E Value above quantitation range
	H Holding times for preparation or analysis exceeded	J Analyte detected below quantitation limits
	ND Not Detected at the Reporting Limit	P Sample pH Not In Range
	PQL Practical Quantitative Limit	RL Reporting Detection Limit
	S % Recovery outside of range due to dilution or matrix	W Sample container temperature is out of limit as specified

QC SUMMARY REPORT

Hall Environmental Analysis Laboratory, Inc.

WO#: 1707842

19-Jul-17

Client: Animas Environmental Services

Project: COPC Scott 9

Sample ID	MB-32851	SampType:	MBLK	TestCode:	EPA Method 8015M/D: Diesel Range Organics					
Client ID:	PBS	Batch ID:	32851	RunNo:	44282					
Prep Date:	7/18/2017	Analysis Date:	7/18/2017	SeqNo:	1398387	Units:	mg/Kg			
Analyte	Result	PQL	SPK value	SPK Ref Val	%REC	LowLimit	HighLimit	%RPD	RPDLimit	Qual
Diesel Range Organics (DRO)	ND	10								
Motor Oil Range Organics (MRO)	ND	50								
Surr: DNOP	9.8		10.00		97.7	70	130			

Sample ID	LCS-32851	SampType:	LCS	TestCode:	EPA Method 8015M/D: Diesel Range Organics					
Client ID:	LCSS	Batch ID:	32851	RunNo:	44282					
Prep Date:	7/18/2017	Analysis Date:	7/18/2017	SeqNo:	1398621	Units:	mg/Kg			
Analyte	Result	PQL	SPK value	SPK Ref Val	%REC	LowLimit	HighLimit	%RPD	RPDLimit	Qual
Diesel Range Organics (DRO)	56	10	50.00	0	112	73.2	114			
Surr: DNOP	4.6		5.000		91.9	70	130			

Sample ID	1707842-001AMS	SampType:	MS	TestCode:	EPA Method 8015M/D: Diesel Range Organics					
Client ID:	SC-5	Batch ID:	32851	RunNo:	44282					
Prep Date:	7/18/2017	Analysis Date:	7/18/2017	SeqNo:	1398839	Units:	mg/Kg			
Analyte	Result	PQL	SPK value	SPK Ref Val	%REC	LowLimit	HighLimit	%RPD	RPDLimit	Qual
Diesel Range Organics (DRO)	56	9.4	46.90	3.250	112	55.8	122			
Surr: DNOP	4.4		4.690		94.4	70	130			

Sample ID	1707842-001AMSD	SampType:	MSD	TestCode:	EPA Method 8015M/D: Diesel Range Organics					
Client ID:	SC-5	Batch ID:	32851	RunNo:	44282					
Prep Date:	7/18/2017	Analysis Date:	7/18/2017	SeqNo:	1398963	Units:	mg/Kg			
Analyte	Result	PQL	SPK value	SPK Ref Val	%REC	LowLimit	HighLimit	%RPD	RPDLimit	Qual
Diesel Range Organics (DRO)	58	9.9	49.26	3.250	111	55.8	122	3.77	20	
Surr: DNOP	4.7		4.926		94.6	70	130	0	0	

Sample ID	LCS-32836	SampType:	LCS	TestCode:	EPA Method 8015M/D: Diesel Range Organics					
Client ID:	LCSS	Batch ID:	32836	RunNo:	44282					
Prep Date:	7/17/2017	Analysis Date:	7/18/2017	SeqNo:	1399678	Units:	%Rec			
Analyte	Result	PQL	SPK value	SPK Ref Val	%REC	LowLimit	HighLimit	%RPD	RPDLimit	Qual
Surr: DNOP	4.4		5.000		88.8	70	130			

Sample ID	MB-32836	SampType:	MBLK	TestCode:	EPA Method 8015M/D: Diesel Range Organics					
Client ID:	PBS	Batch ID:	32836	RunNo:	44282					
Prep Date:	7/17/2017	Analysis Date:	7/18/2017	SeqNo:	1399679	Units:	%Rec			
Analyte	Result	PQL	SPK value	SPK Ref Val	%REC	LowLimit	HighLimit	%RPD	RPDLimit	Qual

Qualifiers:

- * Value exceeds Maximum Contaminant Level.
- D Sample Diluted Due to Matrix
- H Holding times for preparation or analysis exceeded
- ND Not Detected at the Reporting Limit
- PQL Practical Quantitative Limit
- S % Recovery outside of range due to dilution or matrix

- B Analyte detected in the associated Method Blank
- E Value above quantitation range
- J Analyte detected below quantitation limits
- P Sample pH Not In Range
- RL Reporting Detection Limit
- W Sample container temperature is out of limit as specified

QC SUMMARY REPORT

Hall Environmental Analysis Laboratory, Inc.

WO#: 1707842

19-Jul-17

Client: Animas Environmental Services

Project: COPC Scott 9

Sample ID MB-32836 SampType: MBLK TestCode: EPA Method 8015M/D: Diesel Range Organics

Client ID: PBS Batch ID: 32836 RunNo: 44282

Prep Date: 7/17/2017 Analysis Date: 7/18/2017 SeqNo: 1399679 Units: %Rec

Analyte	Result	PQL	SPK value	SPK Ref Val	%REC	LowLimit	HighLimit	%RPD	RPDLimit	Qual
Surr: DNOP	8.4		10.00		84.4	70	130			

Qualifiers:

* Value exceeds Maximum Contaminant Level.
D Sample Diluted Due to Matrix
H Holding times for preparation or analysis exceeded
ND Not Detected at the Reporting Limit
PQL Practical Quantitative Limit
S % Recovery outside of range due to dilution or matrix

B Analyte detected in the associated Method Blank
E Value above quantitation range
J Analyte detected below quantitation limits
P Sample pH Not In Range
RL Reporting Detection Limit
W Sample container temperature is out of limit as specified

QC SUMMARY REPORT

Hall Environmental Analysis Laboratory, Inc.

WO#: 1707842

19-Jul-17

Client: Animas Environmental Services

Project: COPC Scott 9

Sample ID	MB-32828	SampType:	MBLK	TestCode:	EPA Method 8015D: Gasoline Range					
Client ID:	PBS	Batch ID:	32828	RunNo:	44294					
Prep Date:	7/17/2017	Analysis Date:	7/18/2017	SeqNo:	1399599	Units:	mg/Kg			
Analyte	Result	PQL	SPK value	SPK Ref Val	%REC	LowLimit	HighLimit	%RPD	RPDLimit	Qual
Gasoline Range Organics (GRO)	ND	5.0								
Surr: BFB	960		1000		95.8	54	150			

Sample ID	LCS-32828	SampType:	LCS	TestCode:	EPA Method 8015D: Gasoline Range					
Client ID:	LCSS	Batch ID:	32828	RunNo:	44294					
Prep Date:	7/17/2017	Analysis Date:	7/18/2017	SeqNo:	1399600	Units:	mg/Kg			
Analyte	Result	PQL	SPK value	SPK Ref Val	%REC	LowLimit	HighLimit	%RPD	RPDLimit	Qual
Gasoline Range Organics (GRO)	26	5.0	25.00	0	105	76.4	125			
Surr: BFB	1100		1000		105	54	150			

Sample ID	LCSD-32828	SampType:	LCSD	TestCode:	EPA Method 8015D: Gasoline Range					
Client ID:	LCSS02	Batch ID:	32828	RunNo:	44294					
Prep Date:	7/17/2017	Analysis Date:	7/18/2017	SeqNo:	1399601	Units:	%Rec			
Analyte	Result	PQL	SPK value	SPK Ref Val	%REC	LowLimit	HighLimit	%RPD	RPDLimit	Qual
Surr: BFB	1000							0	0	

Sample ID	MB-32814	SampType:	MBLK	TestCode:	EPA Method 8015D: Gasoline Range					
Client ID:	PBS	Batch ID:	32814	RunNo:	44294					
Prep Date:	7/14/2017	Analysis Date:	7/18/2017	SeqNo:	1399613	Units:	%Rec			
Analyte	Result	PQL	SPK value	SPK Ref Val	%REC	LowLimit	HighLimit	%RPD	RPDLimit	Qual
Surr: BFB	980		1000		98.2	54	150			

Sample ID	LCS-32814	SampType:	LCS	TestCode:	EPA Method 8015D: Gasoline Range					
Client ID:	LCSS	Batch ID:	32814	RunNo:	44294					
Prep Date:	7/14/2017	Analysis Date:	7/18/2017	SeqNo:	1399614	Units:	%Rec			
Analyte	Result	PQL	SPK value	SPK Ref Val	%REC	LowLimit	HighLimit	%RPD	RPDLimit	Qual
Surr: BFB	1100		1000		107	54	150			

Qualifiers:

* Value exceeds Maximum Contaminant Level.	B Analyte detected in the associated Method Blank
D Sample Diluted Due to Matrix	E Value above quantitation range
H Holding times for preparation or analysis exceeded	J Analyte detected below quantitation limits
ND Not Detected at the Reporting Limit	P Sample pH Not In Range
PQL Practical Quantitative Limit	RL Reporting Detection Limit
S % Recovery outside of range due to dilution or matrix	W Sample container temperature is out of limit as specified

QC SUMMARY REPORT

Hall Environmental Analysis Laboratory, Inc.

WO#: 1707842

19-Jul-17

Client: Animas Environmental Services

Project: COPC Scott 9

Sample ID	MB-32828	SampType: MBLK		TestCode: EPA Method 8021B: Volatiles						
Client ID:	PBS	Batch ID: 32828		RunNo: 44294						
Prep Date:	7/17/2017	Analysis Date: 7/18/2017		SeqNo: 1399633		Units: mg/Kg				
Analyte	Result	PQL	SPK value	SPK Ref Val	%REC	LowLimit	HighLimit	%RPD	RPDLimit	Qual
Benzene	ND	0.025								
Toluene	ND	0.050								
Ethylbenzene	ND	0.050								
Xylenes, Total	ND	0.10								
Surr: 4-Bromofluorobenzene	1.1		1.000		108	66.6	132			

Sample ID	LCS-32828		SampType: LCS		TestCode: EPA Method 8021B: Volatiles					
Client ID:	LCSS		Batch ID: 32828		RunNo: 44294					
Prep Date:	7/17/2017		Analysis Date: 7/18/2017		SeqNo: 1399634		Units: mg/Kg			
Analyte	Result	PQL	SPK value	SPK Ref Val	%REC	LowLimit	HighLimit	%RPD	RPDLimit	Qual
Benzene	1.0	0.025	1.000	0	100	80	120			
Toluene	0.99	0.050	1.000	0	98.7	80	120			
Ethylbenzene	1.0	0.050	1.000	0	100	80	120			
Xylenes, Total	3.0	0.10	3.000	0	101	80	120			
Surr: 4-Bromofluorobenzene	1.1		1.000		111	66.6	132			

Sample ID	LCSD-32828	SampType: LCSD			TestCode: EPA Method 8021B: Volatiles					
Client ID:	LCSS02	Batch ID: 32828			RunNo: 44294					
Prep Date:	7/17/2017	Analysis Date: 7/18/2017			SeqNo: 1399635		Units: mg/Kg			
Analyte	Result	PQL	SPK value	SPK Ref Val	%REC	LowLimit	HighLimit	%RPD	RPDLimit	Qual
Benzene	1.0	0.025	1.000	0	103	80	120	3.01	20	
Toluene	1.0	0.050	1.000	0	102	80	120	2.92	20	
Ethylbenzene	1.0	0.050	1.000	0	103	80	120	2.89	20	
Xylenes, Total	3.1	0.10	3.000	0	104	80	120	3.23	20	
Surr: 4-Bromofluorobenzene	1.1		1.000		111	66.6	132	0		

Sample ID	MB-32814	SampType:	MBLK		TestCode:	EPA Method 8021B: Volatiles				
Client ID:	PBS	Batch ID:	32814		RunNo:	44294				
Prep Date:	7/14/2017	Analysis Date:	7/18/2017		SeqNo:	1399647	Units:	%Rec		
Analyte	Result	PQL	SPK value	SPK Ref Val	%REC	LowLimit	HighLimit	%RPD	RPDLimit	Qual
Surr: 4-Bromofluorobenzene	1.1		1.000		113	66.6	132			

Sample ID	LCS-32814	SampType:	LCS	TestCode:	EPA Method 8021B: Volatiles					
Client ID:	LCSS	Batch ID:	32814	RunNo:	44294					
Prep Date:	7/14/2017	Analysis Date:	7/18/2017	SeqNo:	1399648	Units:	%Rec			
Analyte	Result	PQL	SPK value	SPK Ref Val	%REC	LowLimit	HighLimit	%RPD	RPDLimit	Qual

Qualifiers:

- | | |
|---|---|
| * Value exceeds Maximum Contaminant Level. | B Analyte detected in the associated Method Blank |
| D Sample Diluted Due to Matrix | E Value above quantitation range |
| H Holding times for preparation or analysis exceeded | J Analyte detected below quantitation limits |
| ND Not Detected at the Reporting Limit | P Sample pH Not In Range |
| PQL Practical Quantitative Limit | RL Reporting Detection Limit |
| S % Recovery outside of range due to dilution or matrix | W Sample container temperature is out of limit as specified |

QC SUMMARY REPORT

Hall Environmental Analysis Laboratory, Inc.

WO#: 1707842

19-Jul-17

Client: Animas Environmental Services

Project: COPC Scott 9

Sample ID	LCS-32814	SampType: LCS			TestCode: EPA Method 8021B: Volatiles					
Client ID:	LCSS	Batch ID: 32814			RunNo: 44294					
Prep Date:	7/14/2017	Analysis Date: 7/18/2017			SeqNo: 1399648		Units: %Rec			
Analyte	Result	PQL	SPK value	SPK Ref Val	%REC	LowLimit	HighLimit	%RPD	RPDLimit	Qual
Surr: 4-Bromofluorobenzene	1.1		1.000		113	66.6	132			

Qualifiers:

* Value exceeds Maximum Contaminant Level.	B Analyte detected in the associated Method Blank
D Sample Diluted Due to Matrix	E Value above quantitation range
H Holding times for preparation or analysis exceeded	J Analyte detected below quantitation limits
ND Not Detected at the Reporting Limit	P Sample pH Not In Range
PQL Practical Quantitative Limit	RL Reporting Detection Limit
S % Recovery outside of range due to dilution or matrix	W Sample container temperature is out of limit as specified



Hall Environmental Analysis Laboratory
4901 Hawkins NE
Albuquerque, NM 87109
TEL: 505-345-3975 FAX: 505-345-4107
Website: www.hallenvironmental.com

Sample Log-In Check List

Client Name: Animas Environmental

Work Order Number: 1707842

RcptNo: 1

Received By: Anne Thorne

7/18/2017 7:00:00 AM

Anne Thorne

Completed By: Anne Thorne

7/18/2017 7:23:56 AM

Anne Thorne

Reviewed By:

[Signature]

7/18/17

Chain of Custody

1. Custody seals intact on sample bottles? Yes ☐ No ☐ Not Present ☒
2. Is Chain of Custody complete? Yes ☒ No ☐ Not Present ☐
3. How was the sample delivered? Courier

Log In

4. Was an attempt made to cool the samples? Yes ☒ No ☐ NA ☐
5. Were all samples received at a temperature of $>0^{\circ}\text{C}$ to 6.0°C ? Yes ☒ No ☐ NA ☐
6. Sample(s) in proper container(s)? Yes ☒ No ☐
7. Sufficient sample volume for indicated test(s)? Yes ☒ No ☐
8. Are samples (except VOA and ONG) properly preserved? Yes ☒ No ☐
9. Was preservative added to bottles? Yes ☐ No ☒ NA ☐
10. VOA vials have zero headspace? Yes ☐ No ☐ No VOA Vials ☒
11. Were any sample containers received broken? Yes ☐ No ☒
12. Does paperwork match bottle labels?
(Note discrepancies on chain of custody) Yes ☒ No ☐
13. Are matrices correctly identified on Chain of Custody? Yes ☒ No ☐
14. Is it clear what analyses were requested? Yes ☒ No ☐
15. Were all holding times able to be met?
(If no, notify customer for authorization.) Yes ☒ No ☐

of preserved
bottles checked
for pH: _____
(<2 or >12 unless noted)
Adjusted? _____
Checked by: _____

Special Handling (if applicable)

16. Was client notified of all discrepancies with this order? Yes ☐ No ☐ NA ☒

Person Notified:	_____	Date:	_____
By Whom:	_____	Via:	<input type="checkbox"/> eMail <input type="checkbox"/> Phone <input type="checkbox"/> Fax <input type="checkbox"/> In Person
Regarding:	_____		
Client Instructions:	_____		

17. Additional remarks: *per CL SC-9 collection Date is 1135/A 07/18/12*

18. Cooler Information

Cooler No	Temp $^{\circ}\text{C}$	Condition	Seal Intact	Seal No	Seal Date	Signed By
1	1.6	Good	Yes			

