

District I  
1625 N. French Dr., Hobbs, NM 88240  
District II  
811 S. First St., Artesia, NM 88210  
District III  
1000 Rio Brazos Road, Aztec, NM 87410  
District IV  
1220 S. St. Francis Dr., Santa Fe, NM 87505

State of New Mexico  
Energy Minerals and Natural Resources  
Department  
Oil Conservation Division  
1220 South St. Francis Dr.  
Santa Fe, NM 87505

Form C-144  
Revised April 3, 2017

For temporary pits, below-grade tanks, and multi-well fluid management pits, submit to the appropriate NMOCD District Office.  
For permanent pits submit to the Santa Fe Environmental Bureau office and provide a copy to the appropriate NMOCD District Office.

16043

Pit, Below-Grade Tank, or  
Proposed Alternative Method Permit or Closure Plan Application

- Type of action: ☒ Below grade tank registration  
☐ Permit of a pit or proposed alternative method  
☐ Closure of a pit, below-grade tank, or proposed alternative method  
☐ Modification to an existing permit/or registration  
☐ Closure plan only submitted for an existing permitted or non-permitted pit, below-grade tank, or proposed alternative method

**Instructions: Please submit one application (Form C-144) per individual pit, below-grade tank or alternative request**

Please be advised that approval of this request does not relieve the operator of liability should operations result in pollution of surface water, ground water or the environment. Nor does approval relieve the operator of its responsibility to comply with any other applicable governmental authority's rules, regulations or ordinances.

1.  
Operator: LOGOS Operating, LLC OGRID #: 289408  
Address: 2010 Afton Place, Farmington, NM 87401  
Facility or well name: LOGOS 2508 20D 15  
API Number: 30-045-35828 OCD Permit Number: \_\_\_\_\_  
U/L or Qtr/Qtr D Section 20 Township 25N Range 8W County: San Juan  
Center of Proposed Design: Latitude 36.392474°N Longitude 107.712321°W NAD83  
Surface Owner: ☒ Federal ☐ State ☐ Private ☐ Tribal Trust or Indian Allotment

2.  
☐ **Pit:** Subsection F, G or J of 19.15.17.11 NMAC  
Temporary: ☐ Drilling ☐ Workover  
☐ Permanent ☐ Emergency ☐ Cavitation ☐ P&A ☐ Multi-Well Fluid Management Low Chloride Drilling Fluid ☐ yes ☐ no  
☐ Lined ☐ Unlined Liner type: Thickness \_\_\_\_\_ mil ☐ LLDPE ☐ HDPE ☐ PVC ☐ Other \_\_\_\_\_  
☐ String-Reinforced  
Liner Seams: ☐ Welded ☐ Factory ☐ Other \_\_\_\_\_ Volume: \_\_\_\_\_ bbl Dimensions: L \_\_\_\_\_ x W \_\_\_\_\_ x D \_\_\_\_\_

3.  
☒ **Below-grade tank:** Subsection I of 19.15.17.11 NMAC  
Volume: 95 bbl Type of fluid: Produced Water  
Tank Construction material: Metal  
☐ Secondary containment with leak detection ☒ Visible sidewalls, liner, 6-inch lift and automatic overflow shut-off  
☐ Visible sidewalls and liner ☐ Visible sidewalls only ☐ Other \_\_\_\_\_  
Liner type: Thickness 45 mil ☐ HDPE ☐ PVC ☒ Other LLDPE

4.  
☐ **Alternative Method:**  
Submittal of an exception request is required. Exceptions must be submitted to the Santa Fe Environmental Bureau office for consideration of approval.

5.  
**Fencing:** Subsection D of 19.15.17.11 NMAC (Applies to permanent pits, temporary pits, and below-grade tanks)  
☐ Chain link, six feet in height, two strands of barbed wire at top (Required if located within 1000 feet of a permanent residence, school, hospital, institution or church)  
☐ Four foot height, four strands of barbed wire evenly spaced between one and four feet  
☒ Alternate. Please specify 4' hog wire with one strand of barbed wire on top

20

6.

**Netting:** Subsection E of 19.15.17.11 NMAC (*Applies to permanent pits and permanent open top tanks*)

- ☒ Screen ☐ Netting ☐ Other \_\_\_\_\_
- ☐ Monthly inspections (If netting or screening is not physically feasible)

7.

**Signs:** Subsection C of 19.15.17.11 NMAC

- ☐ 12"x 24", 2" lettering, providing Operator's name, site location, and emergency telephone numbers
- ☒ Signed in compliance with 19.15.16.8 NMAC

8.

**Variances and Exceptions:**

Justifications and/or demonstrations of equivalency are required. Please refer to 19.15.17 NMAC for guidance.

***Please check a box if one or more of the following is requested, if not leave blank:***

- ☒ Variance(s): Requests must be submitted to the appropriate division district for consideration of approval.
- ☐ Exception(s): Requests must be submitted to the Santa Fe Environmental Bureau office for consideration of approval.

9.

**Siting Criteria (regarding permitting):** 19.15.17.10 NMAC

***Instructions: The applicant must demonstrate compliance for each siting criteria below in the application. Recommendations of acceptable source material are provided below. Siting criteria does not apply to drying pads or above-grade tanks.***

**General siting**

**Ground water is less than 25 feet below the bottom of a low chloride temporary pit or below-grade tank.**

- ☒ NM Office of the State Engineer - iWATERS database search; ☐ USGS; ☒ Data obtained from nearby wells

☐ Yes ☒ No  
☐ NA

**Ground water is less than 50 feet below the bottom of a Temporary pit, permanent pit, or Multi-Well Fluid Management pit.**

NM Office of the State Engineer - iWATERS database search; USGS; Data obtained from nearby wells

☐ Yes ☐ No  
☐ NA

Within incorporated municipal boundaries or within a defined municipal fresh water well field covered under a municipal ordinance adopted pursuant to NMSA 1978, Section 3-27-3, as amended. (**Does not apply to below grade tanks**)

- Written confirmation or verification from the municipality; Written approval obtained from the municipality

☐ Yes ☐ No

Within the area overlying a subsurface mine. (**Does not apply to below grade tanks**)

- Written confirmation or verification or map from the NM EMNRD-Mining and Mineral Division

☐ Yes ☐ No

Within an unstable area. (**Does not apply to below grade tanks**)

- Engineering measures incorporated into the design; NM Bureau of Geology & Mineral Resources; USGS; NM Geological Society; Topographic map

☐ Yes ☐ No

Within a 100-year floodplain. (**Does not apply to below grade tanks**)

- FEMA map

☐ Yes ☐ No

**Below Grade Tanks**

Within 100 feet of a continuously flowing watercourse, significant watercourse, lake bed, sinkhole, wetland or playa lake (measured from the ordinary high-water mark).

- Topographic map; Visual inspection (certification) of the proposed site

☐ Yes ☒ No

Within 200 horizontal feet of a spring or a fresh water well used for public or livestock consumption;

- NM Office of the State Engineer - iWATERS database search; Visual inspection (certification) of the proposed site

☐ Yes ☒ No

**Temporary Pit using Low Chloride Drilling Fluid** (maximum chloride content 15,000 mg/liter)

Within 100 feet of a continuously flowing watercourse, or any other significant watercourse or within 200 feet of any lakebed, sinkhole, or playa lake (measured from the ordinary high-water mark). (Applies to low chloride temporary pits.)

- Topographic map; Visual inspection (certification) of the proposed site

☐ Yes ☐ No

Within 300 feet from a occupied permanent residence, school, hospital, institution, or church in existence at the time of initial application.

- Visual inspection (certification) of the proposed site; Aerial photo; Satellite image

☐ Yes ☐ No

Within 200 horizontal feet of a spring or a private, domestic fresh water well used by less than five households for domestic or stock watering purposes, or 300feet of any other fresh water well or spring, in existence at the time of the initial application.

NM Office of the State Engineer - iWATERS database search; Visual inspection (certification) of the proposed site

☐ Yes ☐ No



Within 100 feet of a wetland.

- US Fish and Wildlife Wetland Identification map; Topographic map; Visual inspection (certification) of the proposed site

☐ Yes ☐ No

### **Temporary Pit Non-low chloride drilling fluid**

Within 300 feet of a continuously flowing watercourse, or any other significant watercourse, or within 200 feet of any lakebed, sinkhole, or playa lake (measured from the ordinary high-water mark).

- Topographic map; Visual inspection (certification) of the proposed site

☐ Yes ☐ No

Within 300 feet from a permanent residence, school, hospital, institution, or church in existence at the time of initial application.

- Visual inspection (certification) of the proposed site; Aerial photo; Satellite image

☐ Yes ☐ No

Within 500 horizontal feet of a spring or a private, domestic fresh water well used by less than five households for domestic or stock watering purposes, or 1000 feet of any other fresh water well or spring, in the existence at the time of the initial application;

- NM Office of the State Engineer - iWATERS database search; Visual inspection (certification) of the proposed site

☐ Yes ☐ No

Within 300 feet of a wetland.

- US Fish and Wildlife Wetland Identification map; Topographic map; Visual inspection (certification) of the proposed site

☐ Yes ☐ No

### **Permanent Pit or Multi-Well Fluid Management Pit**

Within 300 feet of a continuously flowing watercourse, or 200 feet of any other significant watercourse, or lakebed, sinkhole, or playa lake (measured from the ordinary high-water mark).

- Topographic map; Visual inspection (certification) of the proposed site

☐ Yes ☐ No

Within 1000 feet from a permanent residence, school, hospital, institution, or church in existence at the time of initial application.

- Visual inspection (certification) of the proposed site; Aerial photo; Satellite image

☐ Yes ☐ No

Within 500 horizontal feet of a spring or a fresh water well used for domestic or stock watering purposes, in existence at the time of initial application.

- NM Office of the State Engineer - iWATERS database search; Visual inspection (certification) of the proposed site

☐ Yes ☐ No

Within 500 feet of a wetland.

- US Fish and Wildlife Wetland Identification map; Topographic map; Visual inspection (certification) of the proposed site

☐ Yes ☐ No

10.

### **Temporary Pits, Emergency Pits, and Below-grade Tanks Permit Application Attachment Checklist:** Subsection B of 19.15.17.9 NMAC

**Instructions:** Each of the following items must be attached to the application. Please indicate, by a check mark in the box, that the documents are attached.

- ☒ Hydrogeologic Report (Below-grade Tanks) - based upon the requirements of Paragraph (4) of Subsection B of 19.15.17.9 NMAC
- ☐ Hydrogeologic Data (Temporary and Emergency Pits) - based upon the requirements of Paragraph (2) of Subsection B of 19.15.17.9 NMAC
- ☒ Siting Criteria Compliance Demonstrations - based upon the appropriate requirements of 19.15.17.10 NMAC
- ☒ Design Plan - based upon the appropriate requirements of 19.15.17.11 NMAC
- ☒ Operating and Maintenance Plan - based upon the appropriate requirements of 19.15.17.12 NMAC
- ☒ Closure Plan (Please complete Boxes 14 through 18, if applicable) - based upon the appropriate requirements of Subsection C of 19.15.17.9 NMAC and 19.15.17.13 NMAC

☐ Previously Approved Design (attach copy of design) API Number: \_\_\_\_\_ or Permit Number: \_\_\_\_\_

11.

### **Multi-Well Fluid Management Pit Checklist:** Subsection B of 19.15.17.9 NMAC

**Instructions:** Each of the following items must be attached to the application. Please indicate, by a check mark in the box, that the documents are attached.

- ☐ Design Plan - based upon the appropriate requirements of 19.15.17.11 NMAC
- ☐ Operating and Maintenance Plan - based upon the appropriate requirements of 19.15.17.12 NMAC
- ☐ A List of wells with approved application for permit to drill associated with the pit.
- ☐ Closure Plan (Please complete Boxes 14 through 18, if applicable) - based upon the appropriate requirements of Subsection C of 19.15.17.9 NMAC and 19.15.17.13 NMAC
- ☐ Hydrogeologic Data - based upon the requirements of Paragraph (4) of Subsection B of 19.15.17.9 NMAC
- ☐ Siting Criteria Compliance Demonstrations - based upon the appropriate requirements of 19.15.17.10 NMAC

☐ Previously Approved Design (attach copy of design) API Number: \_\_\_\_\_ or Permit Number: \_\_\_\_\_



12.

**Permanent Pits Permit Application Checklist:** Subsection B of 19.15.17.9 NMAC

**Instructions:** Each of the following items must be attached to the application. Please indicate, by a check mark in the box, that the documents are attached.

- ☐ Hydrogeologic Report - based upon the requirements of Paragraph (1) of Subsection B of 19.15.17.9 NMAC  
☐ Siting Criteria Compliance Demonstrations - based upon the appropriate requirements of 19.15.17.10 NMAC  
☐ Climatological Factors Assessment  
☐ Certified Engineering Design Plans - based upon the appropriate requirements of 19.15.17.11 NMAC  
☐ Dike Protection and Structural Integrity Design - based upon the appropriate requirements of 19.15.17.11 NMAC  
☐ Leak Detection Design - based upon the appropriate requirements of 19.15.17.11 NMAC  
☐ Liner Specifications and Compatibility Assessment - based upon the appropriate requirements of 19.15.17.11 NMAC  
☐ Quality Control/Quality Assurance Construction and Installation Plan  
☐ Operating and Maintenance Plan - based upon the appropriate requirements of 19.15.17.12 NMAC  
☐ Freeboard and Overtopping Prevention Plan - based upon the appropriate requirements of 19.15.17.11 NMAC  
☐ Nuisance or Hazardous Odors, including H<sub>2</sub>S, Prevention Plan  
☐ Emergency Response Plan  
☐ Oil Field Waste Stream Characterization  
☐ Monitoring and Inspection Plan  
☐ Erosion Control Plan  
☐ Closure Plan - based upon the appropriate requirements of Subsection C of 19.15.17.9 NMAC and 19.15.17.13 NMAC

13.

**Proposed Closure:** 19.15.17.13 NMAC

**Instructions:** Please complete the applicable boxes, Boxes 14 through 18, in regards to the proposed closure plan.

Type: ☐ Drilling ☐ Workover ☐ Emergency ☐ Cavitation ☐ P&A ☐ Permanent Pit ☒ Below-grade Tank ☐ Multi-well Fluid Management Pit  
☐ Alternative

Proposed Closure Method: ☒ Waste Excavation and Removal  
☐ Waste Removal (Closed-loop systems only)  
☐ On-site Closure Method (Only for temporary pits and closed-loop systems)  
☐ In-place Burial ☐ On-site Trench Burial  
☐ Alternative Closure Method

14.

**Waste Excavation and Removal Closure Plan Checklist:** (19.15.17.13 NMAC) **Instructions:** Each of the following items must be attached to the closure plan. Please indicate, by a check mark in the box, that the documents are attached.

- ☒ Protocols and Procedures - based upon the appropriate requirements of 19.15.17.13 NMAC  
☒ Confirmation Sampling Plan (if applicable) - based upon the appropriate requirements of Subsection C of 19.15.17.13 NMAC  
☒ Disposal Facility Name and Permit Number (for liquids, drilling fluids and drill cuttings)  
☒ Soil Backfill and Cover Design Specifications - based upon the appropriate requirements of Subsection H of 19.15.17.13 NMAC  
☒ Re-vegetation Plan - based upon the appropriate requirements of Subsection H of 19.15.17.13 NMAC  
☒ Site Reclamation Plan - based upon the appropriate requirements of Subsection H of 19.15.17.13 NMAC

15.

**Siting Criteria (regarding on-site closure methods only):** 19.15.17.10 NMAC

**Instructions:** Each siting criteria requires a demonstration of compliance in the closure plan. Recommendations of acceptable source material are provided below. Requests regarding changes to certain siting criteria require justifications and/or demonstrations of equivalency. Please refer to 19.15.17.10 NMAC for guidance.

Ground water is less than 25 feet below the bottom of the buried waste. - NM Office of the State Engineer - iWATERS database search; USGS; Data obtained from nearby wells	<input type="checkbox"/> Yes <input type="checkbox"/> No <input type="checkbox"/> NA
Ground water is between 25-50 feet below the bottom of the buried waste - NM Office of the State Engineer - iWATERS database search; USGS; Data obtained from nearby wells	<input type="checkbox"/> Yes <input type="checkbox"/> No <input type="checkbox"/> NA
Ground water is more than 100 feet below the bottom of the buried waste. - NM Office of the State Engineer - iWATERS database search; USGS; Data obtained from nearby wells	<input type="checkbox"/> Yes <input type="checkbox"/> No <input type="checkbox"/> NA
Within 100 feet of a continuously flowing watercourse, or 200 feet of any other significant watercourse, lakebed, sinkhole, or playa lake (measured from the ordinary high-water mark). - Topographic map; Visual inspection (certification) of the proposed site	<input type="checkbox"/> Yes <input type="checkbox"/> No
Within 300 feet from a permanent residence, school, hospital, institution, or church in existence at the time of initial application. - Visual inspection (certification) of the proposed site; Aerial photo; Satellite image	<input type="checkbox"/> Yes <input type="checkbox"/> No
Within 300 horizontal feet of a private, domestic fresh water well or spring used for domestic or stock watering purposes, in existence at the time of initial application. - NM Office of the State Engineer - iWATERS database; Visual inspection (certification) of the proposed site	<input type="checkbox"/> Yes <input type="checkbox"/> No
Written confirmation or verification from the municipality; Written approval obtained from the municipality	<input type="checkbox"/> Yes <input type="checkbox"/> No
Within 300 feet of a wetland. US Fish and Wildlife Wetland Identification map; Topographic map; Visual inspection (certification) of the proposed site	<input type="checkbox"/> Yes <input type="checkbox"/> No
Within incorporated municipal boundaries or within a defined municipal fresh water well field covered under a municipal ordinance	<input type="checkbox"/> Yes <input type="checkbox"/> No

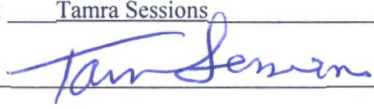


adopted pursuant to NMSA 1978, Section 3-27-3, as amended. - Written confirmation or verification from the municipality; Written approval obtained from the municipality	<input type="checkbox"/> Yes <input type="checkbox"/> No
Within the area overlying a subsurface mine. - Written confirmation or verification or map from the NM EMNRD-Mining and Mineral Division	<input type="checkbox"/> Yes <input type="checkbox"/> No
Within an unstable area. - Engineering measures incorporated into the design; NM Bureau of Geology & Mineral Resources; USGS; NM Geological Society; Topographic map	<input type="checkbox"/> Yes <input type="checkbox"/> No
Within a 100-year floodplain. - FEMA map	<input type="checkbox"/> Yes <input type="checkbox"/> No

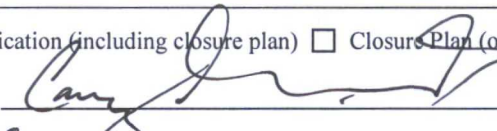
16.  
**On-Site Closure Plan Checklist:** (19.15.17.13 NMAC) *Instructions: Each of the following items must be attached to the closure plan. Please indicate, by a check mark in the box, that the documents are attached.*

☐ Siting Criteria Compliance Demonstrations - based upon the appropriate requirements of 19.15.17.10 NMAC  
☐ Proof of Surface Owner Notice - based upon the appropriate requirements of Subsection E of 19.15.17.13 NMAC  
☐ Construction/Design Plan of Burial Trench (if applicable) based upon the appropriate requirements of Subsection K of 19.15.17.11 NMAC  
☐ Construction/Design Plan of Temporary Pit (for in-place burial of a drying pad) - based upon the appropriate requirements of 19.15.17.11 NMAC  
☐ Protocols and Procedures - based upon the appropriate requirements of 19.15.17.13 NMAC  
☐ Confirmation Sampling Plan (if applicable) - based upon the appropriate requirements of 19.15.17.13 NMAC  
☐ Waste Material Sampling Plan - based upon the appropriate requirements of 19.15.17.13 NMAC  
☐ Disposal Facility Name and Permit Number (for liquids, drilling fluids and drill cuttings or in case on-site closure standards cannot be achieved)  
☐ Soil Cover Design - based upon the appropriate requirements of Subsection H of 19.15.17.13 NMAC  
☐ Re-vegetation Plan - based upon the appropriate requirements of Subsection H of 19.15.17.13 NMAC  
☐ Site Reclamation Plan - based upon the appropriate requirements of Subsection H of 19.15.17.13 NMAC

17.  
**Operator Application Certification:**  
 I hereby certify that the information submitted with this application is true, accurate and complete to the best of my knowledge and belief.

Name (Print): Tamra Sessions Title: Regulatory Specialist  
 Signature:  Date: 9/5/17  
 e-mail address: tsessions@logosresourcesllc.com Telephone: 505-324-4145

18.  
**OCD Approval:** ☒ Permit Application (including closure plan) ☐ Closure Plan (only) ☐ OCD Conditions (see attachment)

OCD Representative Signature:  Approval Date: 9/12/17  
 Title: Environmental Spec OCD Permit Number: \_\_\_\_\_

19.  
**Closure Report (required within 60 days of closure completion):** 19.15.17.13 NMAC  
*Instructions: Operators are required to obtain an approved closure plan prior to implementing any closure activities and submitting the closure report. The closure report is required to be submitted to the division within 60 days of the completion of the closure activities. Please do not complete this section of the form until an approved closure plan has been obtained and the closure activities have been completed.*

☐ Closure Completion Date: \_\_\_\_\_

20.  
**Closure Method:**  
☐ Waste Excavation and Removal ☐ On-Site Closure Method ☐ Alternative Closure Method ☐ Waste Removal (Closed-loop systems only)  
☐ If different from approved plan, please explain.

21.  
**Closure Report Attachment Checklist:** *Instructions: Each of the following items must be attached to the closure report. Please indicate, by a check mark in the box, that the documents are attached.*

☐ Proof of Closure Notice (surface owner and division)  
☐ Proof of Deed Notice (required for on-site closure for private land only)  
☐ Plot Plan (for on-site closures and temporary pits)  
☐ Confirmation Sampling Analytical Results (if applicable)  
☐ Waste Material Sampling Analytical Results (required for on-site closure)  
☐ Disposal Facility Name and Permit Number  
☐ Soil Backfilling and Cover Installation  
☐ Re-vegetation Application Rates and Seeding Technique  
☐ Site Reclamation (Photo Documentation)  
 On-site Closure Location: Latitude \_\_\_\_\_ Longitude \_\_\_\_\_ NAD: ☐ 1927 ☐ 1983



**Operator Closure Certification:**

I hereby certify that the information and attachments submitted with this closure report is true, accurate and complete to the best of my knowledge and belief. I also certify that the closure complies with all applicable closure requirements and conditions specified in the approved closure plan.

Name (Print): \_\_\_\_\_ Title: \_\_\_\_\_

Signature: \_\_\_\_\_ Date: \_\_\_\_\_

e-mail address: \_\_\_\_\_ Telephone: \_\_\_\_\_



**Logos Operating, LLC  
San Juan Basin  
Variance Explanation for BGT**

All requested variances provide equal or better protection of fresh water, public health and the environment.

**C-144 Item #5 Fencing**

Rule 19.15.17.11 D (3) The BGT will be contained within the operating berm and Logos will build a fence with 4' hog wire fencing with one strand of barbed wire on top to deter unauthorized access.

**BGT Design - Liner**

Rule 19.15.17.11 I. An impermeable liner will be installed below the BGT so that any leak in the BGT will flow to a visible point on top of the impermeable liner. The geomembrane liner consists of a 45-mil flexible LLDPE material manufactured by Raven Industries as K45B. This product is four layer reinforced laminated containing no adhesives. The outer layers consist of a high strength polyethylene film manufactured using virgin grade resins and stabilizers for UV resistance in exposed applications. K45B is reinforced with 1300 denier polyester bi-directional scrim reinforcement. It exceeds ASTM D3083 standard by 10%. It is typically used in Brine Pond, Oilfield Pit liner and other industrial applications.

**BGT Closure Notification**

Rule 19.15.17.13 E. If the surface owner is a public entity (BLM/State/Tribal) then an email notification will be sent, of plans to close the BGT at least 72 hours, but no more than 1 week, prior to any closure operation. The notice will include the well name, API number, and location.





# New Mexico Office of the State Engineer

## Water Column/Average Depth to Water

(A CLW##### in the POD suffix indicates the POD has been replaced & no longer serves a water right file.)

(R=POD has been replaced, O=orphaned, C=the file is closed)

(quarters are 1=NW 2=NE 3=SW 4=SE)

(quarters are smallest to largest)

(NAD83 UTM in meters)

(In feet)

POD Number	POD Sub-Code	basin	County	Q 64	Q 16	Q 4	Sec	Tws	Rng	X	Y	Distance	Depth Well	Depth Water	Water Column
<a href="#">SJ 04149 POD1</a>			SJ	2	3	2	34	25N	09W	251224	4027500	6486	1000		
<a href="#">SJ 03275</a>			SJ	4	2	2	25	25N	08W	264502	4028868*	7963	57	18	39
<a href="#">SJ 00063</a>			SJ	3	2	4	26	26N	09W	253268	4038101*	8070	479	234	245
<a href="#">SJ 00064</a>			SJ	1	2	4	26	26N	09W	253268	4038301*	8250	490	215	275
<a href="#">SJ 00214</a>			SJ	2	4	2	26	26N	09W	253479	4038702*	8531	946	230	716
<a href="#">SJ 01979</a>			SJ		3	2	32	25N	09W	247838	4027524	9541	1180	628	552

Average Depth to Water: **265 feet**

Minimum Depth: **18 feet**

Maximum Depth: **628 feet**

**Record Count: 6**

**UTMNAD83 Radius Search (in meters):**

**Easting (X):** 256786

**Northing (Y):** 4030838

**Radius:** 10000

\*UTM location was derived from PLSS - see Help

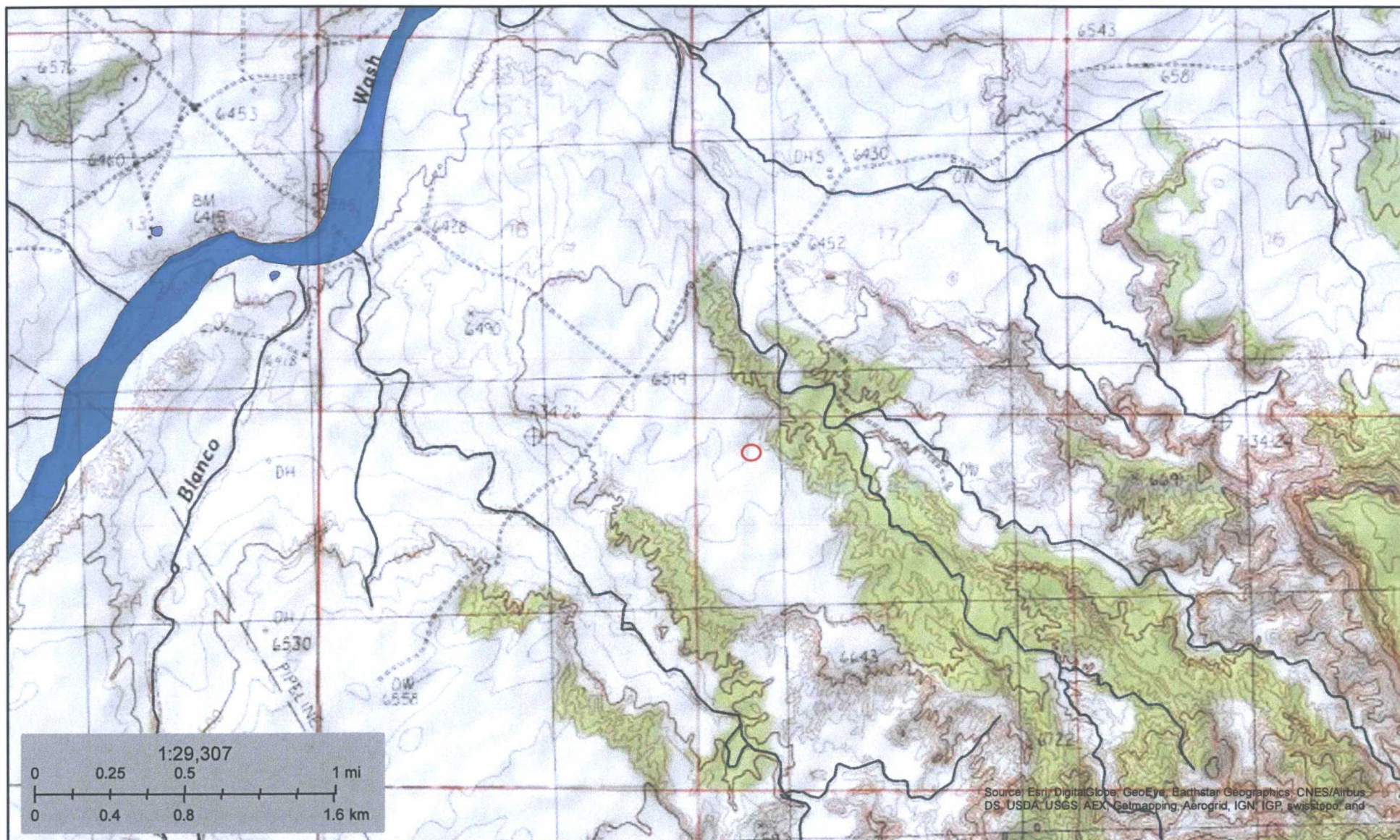
The data is furnished by the NMOSE/ISC and is accepted by the recipient with the expressed understanding that the OSE/ISC make no warranties, expressed or implied, concerning the accuracy, completeness, reliability, usability, or suitability for any particular purpose of the data.





U.S. Fish and Wildlife Service  
National Wetlands Inventory

LOGOS 2508 20D 15



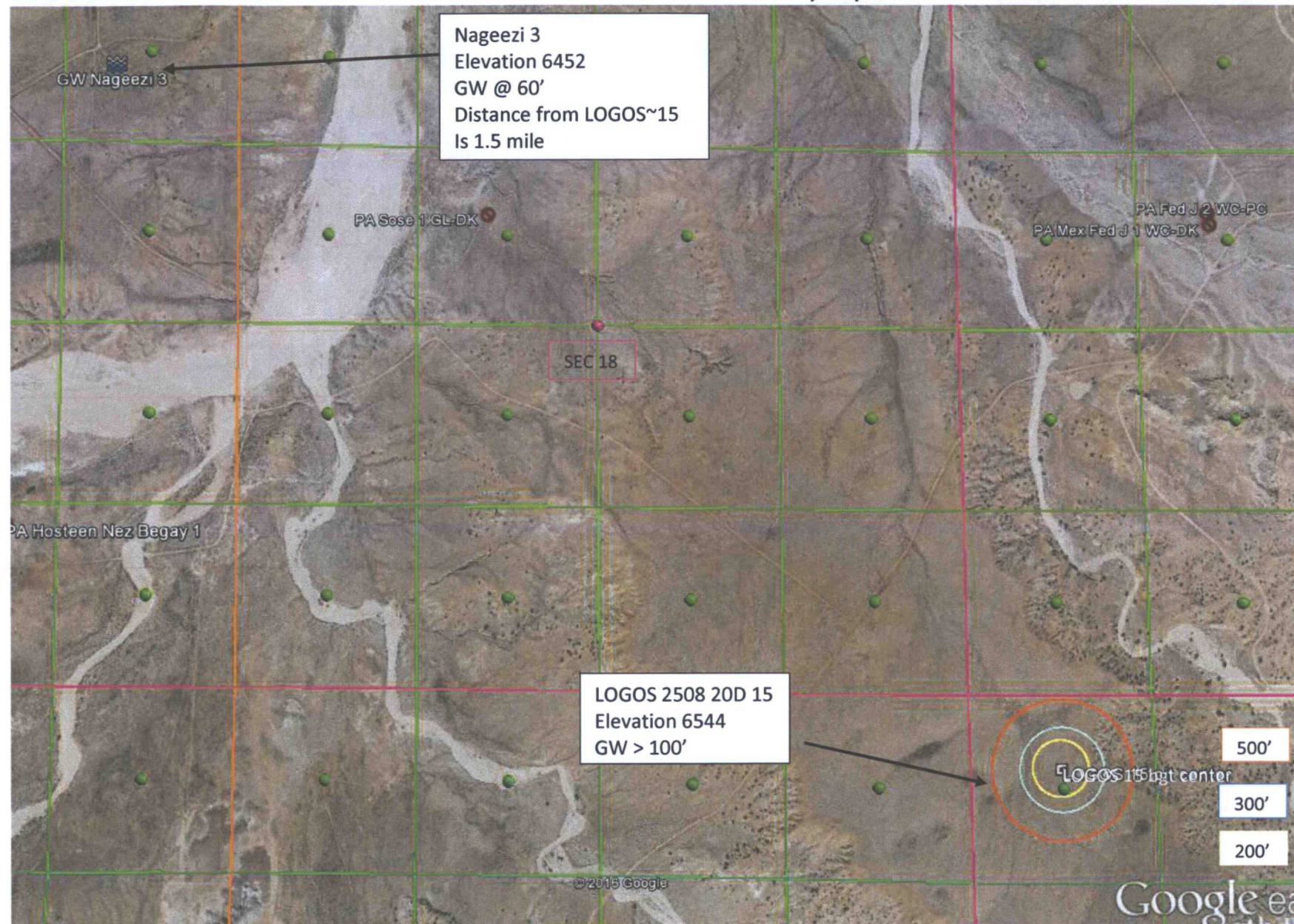
September 13, 2016

- |                                |                                   |          |
|--------------------------------|-----------------------------------|----------|
| Estuarine and Marine Deepwater | Freshwater Forested/Shrub Wetland | Other    |
| Estuarine and Marine Wetland   | Freshwater Pond                   | Riverine |
| Freshwater Emergent Wetland    | Lake                              |          |

This map is for general reference only. The US Fish and Wildlife Service is not responsible for the accuracy or currentness of the base data shown on this map. All wetlands related data should be used in accordance with the layer metadata found on the Wetlands Mapper web site.



LOGOS 2508 20D 15 – AERIAL MAP T25N R08W Sec 20 9/14/2016





1147

NAGEEZI 3: 30-045-21308

E

30-045-21308 (PRE-ONGARD)

DATA SHEET FOR DEEP GROUND BED CATHODIC PROTECTION WELLS  
NORTHWESTERN NEW MEXICO  
(Submit 3 copies to OCD Aztec Office)Operator MERIDIAN OIL Location: Unit NE Sec. 13 Twp 25 Rng 9Name of Well/Wells or Pipeline Serviced NAGEEZI #3

cps 1767w

Elevation 6452' Completion Date 11/16/84 Total Depth 260' Land Type\* N/ACasing, Sizes, Types & Depths 60' OF 8" PVC CASINGIf Casing is cemented, show amounts & types used N/AIf Cement or Bentonite Plugs have been placed, show depths & amounts used  
N/ADepths & thickness of water zones with description of water when possible:  
Fresh, Clear, Salty, Sulphur, Etc. 100' SAMPLE TAKENDepths gas encountered: N/AType & amount of coke breeze used: 2600 lbs.Depths anodes placed: 240', 230', 220', 200', 190'Depths vent pipes placed: 265'Vent pipe perforations: 160'Remarks: 1 gb #1**RECEIVED**  
MAY 31 1991  
OIL CON. DIV.  
DIST. 3

If any of the above data is unavailable, please indicate so. Copies of all logs, including Drillers Log, Water Analyses &amp; Well Bore Schematics should be submitted when available. Unplugged abandoned wells are to be included.

\*Land Type may be shown: F-Federal; I-Indian; S-State; P-Fee.  
If Federal or Indian, add Lease Number.

WELL CASING,  
CATHODIC PROTECTION CONSTRUCTION REPORT  
DAILY LOG

Drilling Log (Attach Hereto) ☒

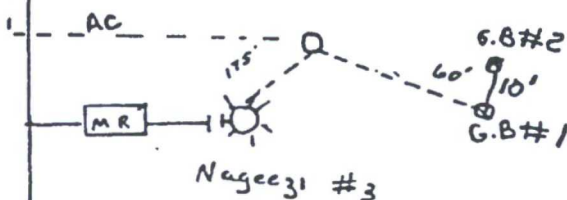
Completion Date 11-16-84

PS #	Well Name, Line or Plant	Work Order #	Static	Ins Union Check
1767 W	<u>NAGEEZI #3</u>	55320-21-50-20	68V 600' SE.	<input checked="" type="checkbox"/> Good <input type="checkbox"/> Bad
Location	Anode Size	Anode Type	Size Bit	
NE 13-25-9	2" X 60"	Durion	6 3/4" button bit.	
Depth Drilled	Depth Logged	Drilling Rig Time	Total Lbs. Coke Used	No. Sacks Mud Used
260'	260'	Hole #1	2600 lbs	Hole #2
Anode Depth				
Hole #1				
1 240	#2 230	#3 220	#4 200	#5 190
#6 165	#7 155	#8 130	#9 145	#10 135
Anode Output (Amps)				
1 3.45	#2 5.00	#3 3.80	#4 2.98	#5 4.60
#6 3.50	#7 4.48	#8 4.15	#9 5.40	#10 5.60
1 3.01	#2 4.20	#3 3.46	#4 2.70	#5 4.0
#6 3.15	#7 4.00	#8 3.80	#9	#10
Anode Depth				
11	#12	#13	#14	#15
#16	#17	#18	#19	#20
Anode Output (Amps)				
11	#12	#13	#14	#15
#16	#17	#18	#19	#20
Total Circuit Resistance			No. 8 C.P. Cable Used	No. 2 C.P. Cable Used
Volts 18.34	Amps 14.3	Ohms .86		
12.10	20.30	.60		

Remarks: 11-9-84 J. Statts - Set 60' of 8" PVC. casing due to sand & gravel. Started setting casing at 12:09, casing set at 1:00 p.m. 11-12-84 - Some water at 60'. Good water at 100' running 8 gals. per minute (per driller). Found shell and sandy shell at 100' & 140'. mostly sand and gravel to 260' which was bottom of hole. Installed 265' c PVC vent pipe with 160' of perforations. Slurried 2600 lbs. of coke down hole. It bridged off at #7 anode after it had been coked. Put #8 anode at 130; A  
rectifier Size: 40 V 16 A room up hole for anode #9 & 10.  
Anode Depth: NONE  
Depth Credit: 240  
Casing Cable: 200'  
Casing & 1 Cable: 245'  
Meter Pole: NONE  
Meter Pole: NONE  
Stub Pole: 1  
11-16-84 Drilled Hole #2 All Construction Completed  
Set casing 10:00 AM to 12: AM - 60' of casing  
Total casing setting TIME 3 hrs  
Signed off 12-4-84

O.V. Time Hours = 6  
Regular Hours = 32

Carley Pipeline Co



6452





## ***Hydro geological report for LOGOS 2508 20D 15***

The LOGOS 2508 20D 15 is located on federal lands managed by the Bureau of Land Management in Rio Arriba County, New Mexico. The general region surrounding the proposed project area is characterized by badlands, mesas, and relatively flat lowland valleys. The proposed project area is situated on the top of an unnamed mesa. With vegetation consisting of pinyon, juniper, sagebrush and grass terrain. Ground elevation at the proposed well head is 6544 feet.

### **General Regional Groundwater Description:**

As a portion of the San Juan Basin, the FFO region is underlain by sandstone aquifers of the Colorado Plateau. The primary aquifer of potential concern at this location is the Uinta-Animas Aquifer, composed primarily of Lower Tertiary rocks in the San Juan Basin. The aquifer consists of the San Jose Formation; the underlying Animas formation and its lateral equivalent, the Nacimiento formation; and the Ojo Alamo Sandstone. The thickness of the Uinta-Animas aquifer generally increases toward the central part of the basin. In this region, the maximum thickness of the aquifer is approximately 3500 feet (USGS, 2001). This aquifer contains fresh to moderately saline water. Groundwater generally flows toward the San Juan River and its tributaries, where it becomes alluvial groundwater or is discharged to stream flow.

### **Site Specific Information:**

Surface Hydrology: The BGT area is flat and situated on top of a mesa. A continuously flowing watercourse as noted by National Wetlands map is approximately 850' to the northeast of bgt center and drains to the northwest. The Blanco Wash is approximately 1 mile west of the project area.

1st Water Bearing Formation: San Jose, Tertiary; Formation Thickness: Approximately 200 - 700 ft.

Underlying Formation: Nacimiento, Tertiary

### **Depth to Groundwater:**

Depth to groundwater is estimated at greater than 100' below bottom of the BGT. Approximately one and a half mile to the northwest, a cathodic well was drilled on the Nageezi 3 at 6452' elevation. The well was drilled to 260' and water was encountered at 60'. The new proposed site is located at a higher elevation of 6544', which would put the groundwater depth at approximately 152'.

## ***Siting Criteria***

1. According to the iWaters Database from the State Engineers Office the closest known water well (SJ04149) is 6486 meters (4 miles) away in Section 34 of T25N R9W. The depth of the well is 1000 with no water depth noted.
2. As shown on the attached topographic map and aerial photos, there are no continuously flowing watercourses within 100' of the BGT, or any significant watercourses, lakebeds, sinkholes or playa lakes within 100' of the BGT.
3. There are no domestic water wells or springs within 200' of the BGT. See iWaters Database printout.



---

## Logos Operating Below Grade Tank Design and Construction Plan

---

In accordance with NMAC 19.15.17, the following information describes the design and construction plan for below grade tanks (BGT) for Logos Operating, LLC (Logos). This is a standard design and construction plan for Logos.

### **General Plan in Accordance with 19.15.17.11**

1. Logos will design and construct a BGT to contain liquids and solids that is designed to prevent contamination of fresh water and protect public health and the environment.
2. The location of the BGT will be at a battery or well location which contains proper upright signs (in compliance with 19.15.17.11C).
3. The BGT will be contained within the operating berm and will be protected with 4' hog wire fencing with one strand of barbed wire on top to deter unauthorized access. A six foot chain link fence topped with two strands of barbed wire will be used if the BGT is within 1000 feet of permanent residence, school, hospital, institution or church. Logos ensures that all gates associated with the fence are closed and locked when responsible personnel are not onsite.
4. The BGT will have an expanded metal cover.
5. The BGT will be constructed out of steel which is resistant to the particular contents and resistant to damage from sunlight. The pit will be painted to minimize rust and corrosion.
6. The foundation will be level, free of rocks, debris, sharp edges or irregularities to prevent punctures, cracks, indentations of the liner or tank bottom.
7. The BGT will be designed and constructed to prevent surface water run-on from entering the tank. The corrugated steel wall surrounding the pit will be above grade and will prevent water from running into the BGT.
8. The BGT will have a single wall that is capable of being inspected. The BGT will have a corrugated steel wall barrier that prevents the ground from collapsing around the BGT and allows for the BGT to be thoroughly inspected by providing a direct sight line to the BGT bottom and to the BGT impermeable liner.
9. The BGT will be set on beams, six inches or greater, on the liner in a way that will protect the bottom of the BGT from sharp objects.
10. The BGT system is equipped with an ESD (Emergency Shut Down) with the ability to detect a high level in the tank which will provide alarm notification and initiate the shutdown process. This design is based on 19.15.17.11.I.4.a.
11. An impermeable liner will be installed below the BGT so that any leak in the BGT will flow to a visible point on top of the impermeable liner. The geomembrane liner consists of a 45-mil flexible LLDPE material manufactured by Raven Industries as K45B. This product is four layer reinforced laminated containing no adhesives. The outer layers consist of a high strength polyethylene film manufactured using virgin grade resins and stabilizers for UV resistance in exposed applications. K45B is reinforced with 1300 denier polyester bi-directional scrim reinforcement. It exceeds ASTM D3083 standard by 10%. It is typically used in Brine Pond, Oilfield Pit liner and other industrial applications. The manufacture spec sheet is attached.

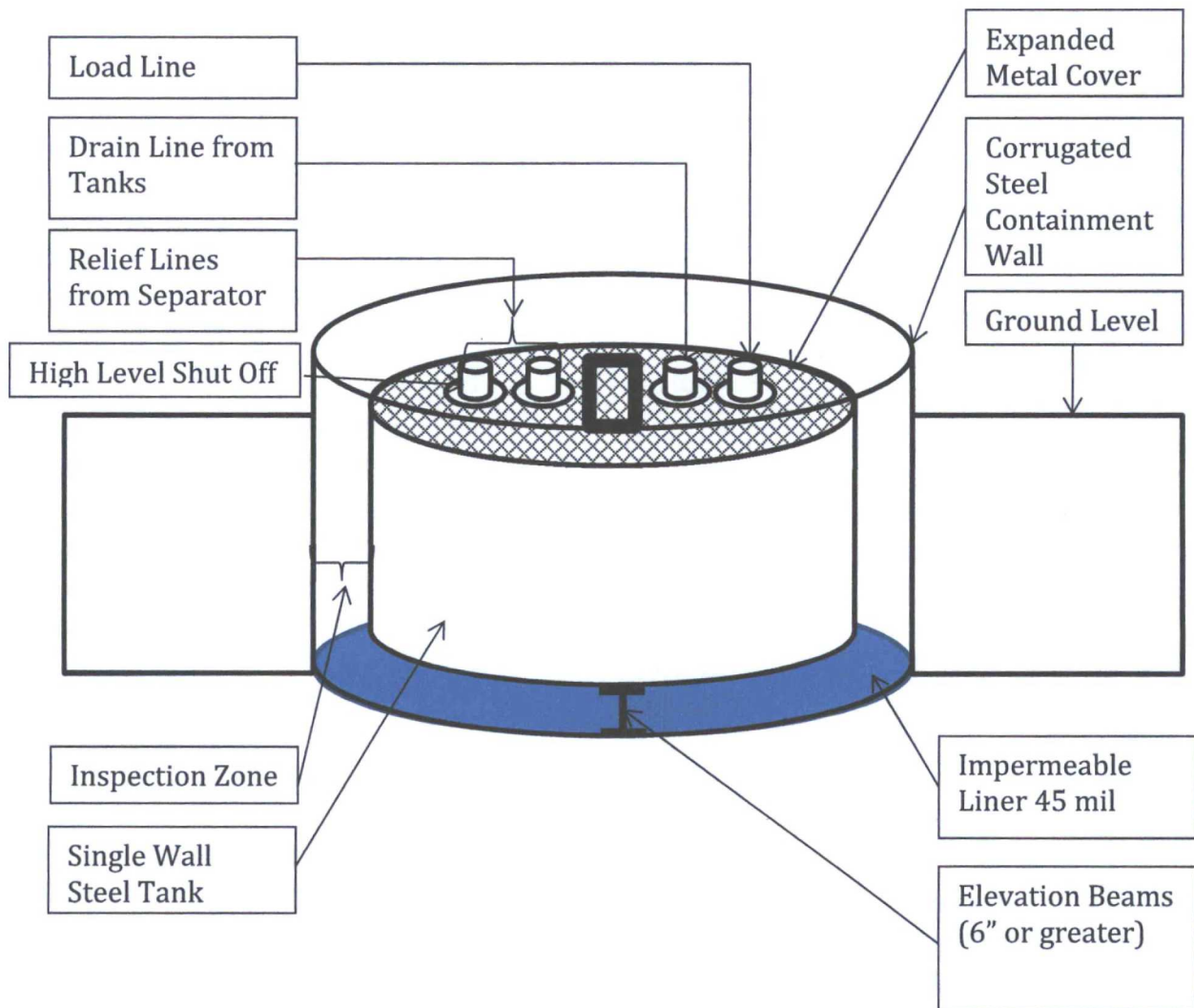




---

**Logos Operating  
Below Grade Tank Design**

---





---

## **Logos Operating Below Grade Tank Operation and Maintenance Plan**

---

In accordance with NMAC 19.15.17, the following information describes the operation and maintenance plan for below grade tanks (BGT) for Logos Operating, LLC (Logos). This is a standard procedure for Logos.

### **General Plan in Accordance with 19.15.17.12**

1. Logos will operate and maintain the BGT to contain liquids and solids while maintaining the integrity of the liner, BGT, and corrugated steel wall. The operation and maintenance are plan are designed to prevent contamination of fresh water and protect public health and safety.
2. Logos will not store or discharge hazardous waste into the BGT.
3. If the BGT develops a leak, Logos will remove all of the fluids from the BGT within 48 hours and notify the appropriate division office pursuant to 19.15.29 NMAC. Logos will immediately take the BGT out of service until it is properly repaired or replaced.
4. The BGT will be operated and designed to prevent the collection of surface water run-on.
5. The BGT will be bounded by a corrugated steel wall which will contain an unanticipated release. The BGT and corrugated steel wall are also located inside of the berm which will act as a secondary containment barrier in the event of an unanticipated release.
6. Logos will not allow the BGT to overflow or collect surface water run on. Discharges to the pit will be shutoff automatically if the high level alarm is triggered from the ESD or manually if the ESD is not functional. Surface water run-on is prevented by having a corrugated steel ring that is above ground level which will prevent water run-on from entering the BGT as well as a radial space that keeps the BGT walls away from the ground level which will also prevent water-run on from entering and overfilling the BGT.
7. Logos will remove any measurable layer of oil from the BGT.
8. The BGT will be inspected for leak and damage at least monthly and the integrity will be documented annually with records maintained for at least 5 years.
9. The BGT will be operated with adequate freeboard to prevent overflow of the BGT.
10. The BGT sidewalls will be kept free of anything that could not allow for inspection of liner and sidewalls.





---

## **Logos Operating Below Grade Tank Closure Plan**

---

In accordance with NMAC 19.15.17.13, the following information describes the closure plan for below grade tanks (BGT) for Logos Operating, LLC (Logos).

### **General Plan in Accordance with 19.15.17.13**

1. Logos will obtain approval of a closure plan prior to commencing closure operations.
2. Logos will notify the surface owner by certified mail, return receipt requested, unless surface owner is a public entity (BLM/State/Tribal) then an email notification will be sent, of plans to close the BGT at least 72 hours, but no more than 1 week, prior to any closure operation. The notice will include the well name, API number, and location.
3. Logos will notify the appropriate district office verbally and in writing with at least 72 hours of notice but no more than 1 week. The notice will include well name and API number as well as the location containing unit letter, section, township, and range.
4. Logos will remove liquids and sludge from the BGT within 60 days of cessation of operations and dispose of those at a division approved facility.
5. Within 6 months of cessation of operations, Logos will dispose, reuse/recycle or reclaim in a division approved manner the BGT, and all unused equipment associated with the BGT.
6. The soils beneath the BGT will be tested as follows:
  - a. A five point composite sample including any obvious staining or wet soils shall be taken under BGT and will be analyzed for constituents listed in Table I (see page 2) of 19.15.17.13 NMAC.
  - b. Based on the results of the soil test, Logos will obtain NMOCD District approval prior to completing any necessary additional delineation for closure. If the soil tests are at or below the standards of closure, Logos will proceed with closure.
7. Upon closing of the BGT, Logos will reclaim the unused BGT location to a safe and stable condition that blends with the surrounding undisturbed area as provided in Paragraph 2 of subsection H of 19.15.17.13 as well as recontouring the area in accordance with paragraph 5 in subsection H of 19.15.17.13 NMAC. The soil cover will be constructed to prevent ponding of water and erosion of the cover material.
8. The reclamation of the BGT area will contain a uniform vegetative cover that reflects a life-form ratio of plus or minus fifty (50%) of pre-disturbance levels and a total percent plant cover of at least seventy (70%) of pre-disturbance levels, excluding noxious weeds. The re-vegetation and reclamation obligations imposed by other applicable federal or tribal agencies that manage the lands will supersede these provisions and govern the obligations.

9. Logos will notify the division when reclamation and re-vegetation is complete.
10. Logos will submit a closure report on form C-144 within 60 days of closure completion. The closure report will contain back filling details, capping and covering where applicable, all necessary attachments, certification that all information contained in the report is correct and that the operator has complied with all applicable closure requirements to the best of its knowledge.

Components	Tests Method	Limit (mg/Kg)
		<b>≤50' bottom of BGT to GW</b>
Benzene	EPA SW-846 8021B or 8015M	10
BTEX	EPA SW-846 8021B or 8260B	50
TPH	EPA SW-846 418.1	100
Chlorides	EPA 300.0	600
GRO/DRO	EPA SW-846 80165M	n/a
		<b>51'-100' bottom of BGT to GW</b>
Benzene	EPA SW-846 8021B or 8015M	10
BTEX	EPA SW-846 8021B or 8260B	50
TPH	EPA SW-846 418.1	2500
Chlorides	EPA 300.0	10,000
GRO/DRO	EPA SW-846 80165M	1000
		<b>&gt;100' bottom of BGT to GW</b>
Benzene	EPA SW-846 8021B or 8015M	10
BTEX	EPA SW-846 8021B or 8260B	50
TPH	EPA SW-846 418.1	2500
Chlorides	EPA 300.0	20,000
GRO/DRO	EPA SW-846 80165M	1000



# DURA•SKRIM® K30B, K36B & K45B

Scrim Reinforced Polyethylene

**RAVEN**  
INDUSTRIES

## Product Description

DURA•SKRIM® K30B, K36B and K45B are linear low density polyethylene geomembranes reinforced with a heavy dense scrim reinforcement. In addition to excellent dimensional stability the K-Series reinforcement provides unmatched tear and tensile strength. DURA•SKRIM® K-Series membranes are formulated with thermal and UV stabilizers to assure a long service life.

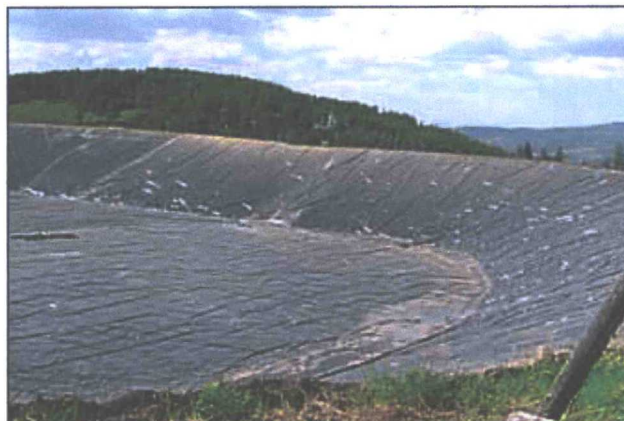
## Product Use

DURA•SKRIM® K30B, K36B and K45B are used in applications that require exceptional outdoor life and demand high tear strength and resistance to thermal expansion.

DURA•SKRIM® K30B, K36B and K45B are manufactured from a very chemical-resistant, Linear Low Density Polyethylene with excellent cold crack performance.

## Size & Packaging

DURA•SKRIM® K30B, K36B and K45B are available in a variety of widths and lengths to meet the project requirements. Large diameter mill rolls are available to assure an efficient seaming process. Factory welded panels are accordion folded and tightly rolled on a heavy-duty core for ease of handling and time saving installation.



Containment Liner

Product	Part #
DURA•SKRIM .....	K30B
DURA•SKRIM .....	K36B
DURA•SKRIM .....	K45B

## APPLICATIONS

Waste Lagoon Liners	Remediation Covers
Floating Covers	Landfill Caps
Daily Landfill Covers	Erosion Control Covers
Modular Tank Liners	Canal Liners
Tunnel Liners	Disposal Pit Liner
Remediation Liners	Water Containment Ponds
Earthen Liners	Heap Leach Liner
Interim Landfill Covers	



# DURA-SKRIM® K30B, K36B & K45B



Scrim Reinforced Polyethylene

## PRO-FORMA DATA SHEET

PROPERTIES	TEST METHOD	DURA-SKRIM K30B		DURA-SKRIM K36B		DURA-SKRIM K45B	
		Minimum Roll Averages	Typical Roll Averages	Minimum Roll Averages	Typical Roll Averages	Minimum Roll Averages	Typical Roll Averages
APPEARANCE		Black	Black	Black	Black	Black	Black
THICKNESS		27 mil	30 mil	32 mil	36 mil	40 mil	45 mil
WEIGHT LBS/MSF, (OZ/YD <sup>2</sup> )		116 (16.7)	125 (18.0)	136 (19.6)	155 (22.3)	175 (25.2)	200 (28.8)
CONSTRUCTION		Dense scrim reinforced polyethylene					
*PLY ADHESION - LBF/IN	ASTM D 6636	17 or FTB	20 or FTB	21 or FTB	28 or FTB	24 or FTB	32 or FTB
TENSILE STRENGTH - LBF/IN	ASTM D 7003	165 MD 159 TD	182 MD 170 TD	170 MD 166 TD	186 MD 175 TD	178 MD 170 TD	195 MD 180 TD
TENSILE ELONGATION AT BREAK % (FILM BREAK)	ASTM D 7003	480 MD 430 TD	540 MD 500 TD	500 MD 450 TD	575 MD 520 TD	520 MD 470 TD	590 MD 550 TD
TENSILE ELONGATION AT BREAK % (SCRIM BREAK)	ASTM D 7003	32 MD 32 TD	35 MD 35 TD	32 MD 32 TD	35 MD 35 TD	32 MD 32 TD	35 MD 35 TD
TONGUE TEAR STRENGTH - LBF	ASTM D 5884	185 MD 160 TD	195 MD 185 TD	160 MD 120 TD	180 MD 140 TD	140 MD 120 TD	175 MD 145 TD
GRAB TENSILE - LBF (SCRIM BREAK)	ASTM D 7004	260 MD 245 TD	270 MD 255 TD	280 MD 270 TD	300 MD 290 TD	260 MD 245 TD	270 MD 255 TD
GRAB TENSILE ELONGATION AT BREAK % (SCRIM BREAK)	ASTM D 7004	25	32	25	32	25	32
HIGH PRESSURE OIT (HPOIT)	ASTM D 5885	1000 min	2400 min	1000 min	2400 min	1000 min	2400 min
PUNCTURE RESISTANCE - LBF	ASTM D 4833	85	100	110	120	120	133
MAXIMUM USE TEMPERATURE		180° F		180° F		180° F	
MINIMUM USE TEMPERATURE		-70° F		-70° F		-70° F	

\*Raven modified QC procedure

### PRO-FORMA Sheet Contents:

The data listed in this Pro-Forma data sheet is representative of initial production runs. These values may be revised at anytime without notice as additional test data becomes available.



DURA-SKRIM® K30B, K36B and K45B are linear low density polyethylene geomembranes reinforced with a heavy dense scrim reinforcement. In addition to excellent dimensional stability the K-Series reinforcement provides unmatched tear and tensile strength. DURA-SKRIM® K-Series membranes are formulated with thermal and UV stabilizers to assure a long service life.

Note: To the best of our knowledge, unless otherwise stated, these are typical property values and are intended as guides only, not as specification limits. Chemical resistance, odor transmission, longevity as well as other performance criteria is not implied or given and actual testing must be performed for applicability in specific applications and/or conditions. RAVEN INDUSTRIES MAKES NO WARRANTIES AS TO THE FITNESS FOR A SPECIFIC USE OR MERCHANTABILITY OF PRODUCTS REFERRED TO, no guarantee of satisfactory results from reliance upon contained information or recommendations and disclaims all liability for resulting loss or damage.



### Engineered Films Division

P.O. Box 5107  
Sioux Falls, SD 57117-5107  
Ph: (605) 335-0174 • Fx: (605) 331-0333

Toll Free: 800-635-3456  
Email: [efdsales@ravenind.com](mailto:efdsales@ravenind.com)  
[www.ravenefd.com](http://www.ravenefd.com)

Limited Warranty available at [www.RavenEFD.com](http://www.RavenEFD.com)

9/11 EFD 1251