

District I
1625 N. French Dr., Hobbs, NM 88240
Phone: (575) 393-6161 Fax: (575) 393-0720
District II
811 S. First St., Artesia, NM 88210
Phone: (575) 748-1283 Fax: (575) 748-9720
District III
1000 Rio Brazos Road, Aztec, NM 87410
Phone: (505) 334-6178 Fax: (505) 334-6170
District IV
1220 S. St. Francis Dr., Santa Fe, NM 87505
Phone: (505) 476-3460 Fax: (505) 476-3462

State of New Mexico
Energy Minerals and Natural Resources
Oil Conservation Division
1220 South St. Francis Dr.
Santa Fe, NM 87505

Form C-101
Revised July 18, 2013

☐ AMENDED REPORT

APPLICATION FOR PERMIT TO DRILL, RE-ENTER, DEEPEN, PLUGBACK, OR ADD A ZONE

¹ Operator Name and Address Dugan Production Corp. 709 East Murray Drive Farmington, New Mexico 87401		² OGRID Number 006515
³ Property Code 317435		³ API Number 30-045-35852
³ Property Name PGA 2 Unit 2		⁶ Well No. 4R

7. Surface Location

UL - Lot	Section	Township	Range	Lot Idn	Feet from	N/S Line	Feet From	E/W Line	County
I	2	23N	11W		1903	South	664	East	San Juan

8. Proposed Bottom Hole Location

UL - Lot	Section	Township	Range	Lot Idn	Feet from	N/S Line	Feet From	E/W Line	County

9. Pool Information

Pool Name Basin Fruitland Coal	Pool Code 71629
-----------------------------------	--------------------

Additional Well Information

¹¹ Work Type N	¹² Well Type G	¹³ Cable/Rotary R	¹⁴ Lease Type S	¹⁵ Ground Level Elevation 6,609'
¹⁶ Multiple N	¹⁷ Proposed Depth 1,150-ft.	¹⁸ Formation Pictured Cliffs	¹⁹ Contractor TBD	²⁰ Spud Date ASAP
Depth to Ground water >100'		Distance from nearest fresh water well >500'		Distance to nearest surface water >1-mile

☒ We will be using a closed-loop system in lieu of lined pits

21. Proposed Casing and Cement Program

Type	Hole Size	Casing Size	Casing Weight/ft	Setting Depth	Sacks of Cement	Estimated TOC
Surface Csg	12-1/4"	8-5/8"	24# J-55 STC	120-ft.	99-cf	Surface
Production Csg	7-7/8"	5-1/2"	14# J-55 STC	1,150-ft.	360-cf	Surface

Casing/Cement Program: Additional Comments

--

22. Proposed Blowout Prevention Program

Type	Working Pressure	Test Pressure	Manufacturer
Double Ram	2,000 psi	Low Press. 250 psig High Press. 2,000 psig	Schafer 9" 2000 Series

²³ I hereby certify that the information given above is true and complete to the best of my knowledge and belief. I further certify that I have complied with 19.15.14.9 (A) NMAC <input type="checkbox"/> and/or 19.15.14.9 (B) NMAC <input type="checkbox"/> if applicable. Signature: <i>Kurt Fagrelius</i>		OIL CONSERVATION DIVISION	
Printed name: Kurt Fagrelius		Approved By: <i>Charles...</i>	
Title: Vice President Land & Exploration		Title:	
E-mail Address: kfagrelius@duganproduction.com		Approved Date: 9.28.17	
Date: September 18, 2017		Expiration Date: 9.28.19	
Phone: 505-325-1821		Conditions of Approval Attached	

SEE ATTACHED NMOCD
CONDITIONS OF APPROVAL

District I
1625 N. French Drive, Hobbs, NM 88240
Phone: (575) 393-6161 Fax: (575) 393-0720

District II
811 S. First Street, Artesia, NM 88210
Phone: (575) 748-1283 Fax: (575) 748-9720

District III
1000 Rio Brazos Road, Aztec, NM 87410
Phone: (505) 334-6178 Fax: (505) 334-6170

District IV
1220 S. St. Francis Drive, Santa Fe, NM 87505
Phone: (505) 476-3460 Fax: (505) 476-3462

State of New Mexico
Energy, Minerals & Natural Resources Department

Form C-102
Revised August 1, 2011

Submit one copy to
Appropriate District Office

OIL CONSERVATION DIVISION
1220 South St. Francis Drive
Santa Fe, NM 87505

☐ AMENDED REPORT

WELL LOCATION AND ACREAGE DEDICATION PLAT

*API Number 30.045-35852		*Pool Code 71629	*Pool Name BASIN FRUITLAND COAL
*Property Code 317435	*Property Name PGA UNIT 2		*Well Number 4R
*GRID No. 006515	*Operator Name DUGAN PRODUCTION CORPORATION		*Elevation 6609'

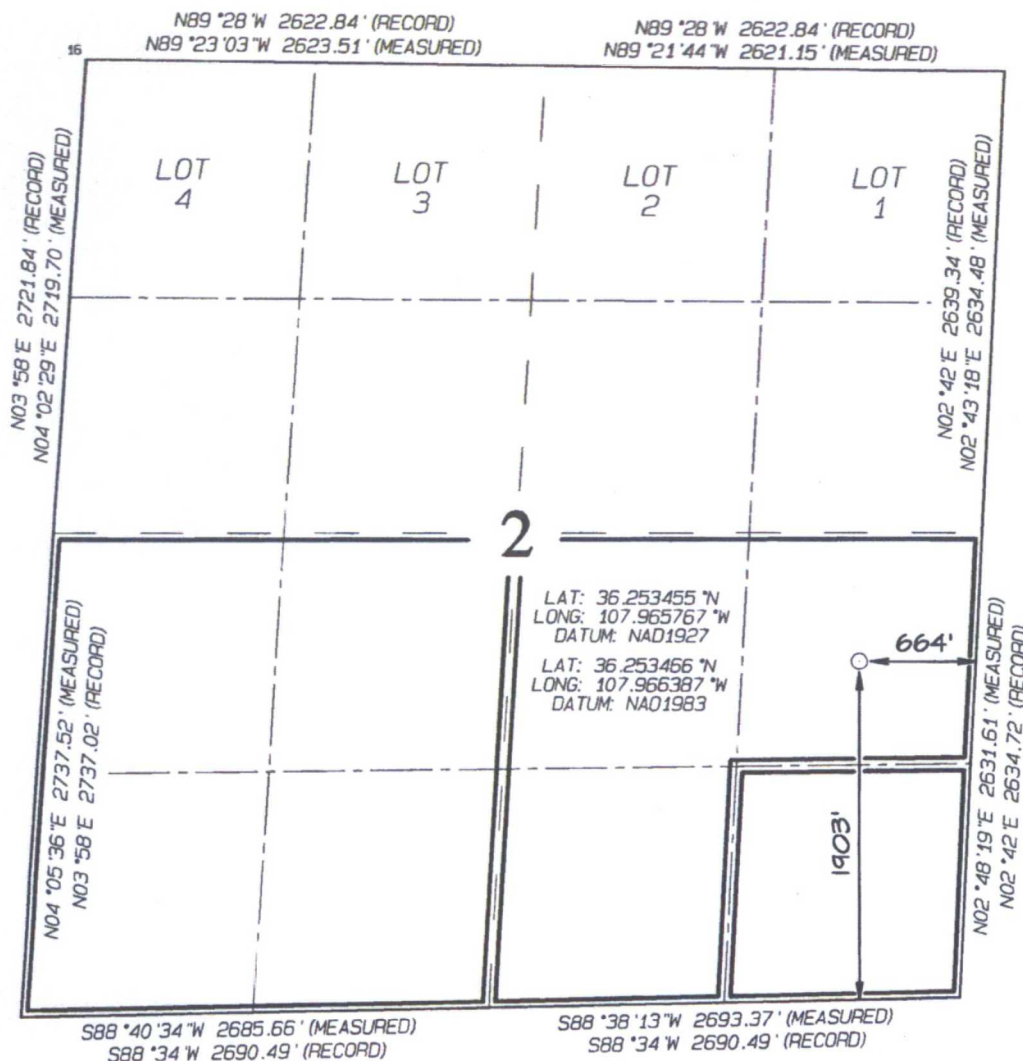
¹⁰ Surface Location

UL or lot no. I	Section 2	Township 23N	Range 11W	Lot Idn	Feet from the 1903	North/South line SOUTH	1669	East/West line EAST	County SAN JUAN
--------------------	--------------	-----------------	--------------	---------	-----------------------	---------------------------	------	------------------------	--------------------

¹¹ Bottom Hole Location If Different From Surface

UL or lot no.	Section	Township	Range	Lot Idn	Feet from the	North/South line	Feet from the	East/West line	County
*Dedicated Acres 320.0 Acres - S/2					*Joint or Infill	*Consolidation Code	*Order No.		

NO ALLOWABLE WILL BE ASSIGNED TO THIS COMPLETION UNTIL ALL INTERESTS HAVE
BEEN CONSOLIDATED OR A NON-STANDARD UNIT HAS BEEN APPROVED BY THE DIVISION



¹⁷ OPERATOR CERTIFICATION

I hereby certify that the information contained herein is true and complete to the best of my knowledge and belief, and that this organization either owns a working interest or unleased mineral interest in the land including the proposed bottom-hole location or has a right to drill this well at this location pursuant to a contract with an owner of such a mineral or working interest, or to a voluntary pooling agreement or a compulsory pooling order heretofore entered by the division.

Signature *Kurt Fagrelus* Date 9/18/2017
Printed Name Kurt Fagrelus
E-mail Address kfagrelus@duganproduction.com

¹⁸ SURVEYOR CERTIFICATION

I hereby certify that the well location shown on this plat was plotted from field notes of actual surveys made by me or under my supervision, and that the same is true and correct to the best of my belief.

Date Revised: SEPTEMBER 12, 2017
Survey Date: SEPTEMBER 2, 2017

Signature and Seal of Professional Surveyor



JASON C. EDWARDS
Certificate Number 15269

Federal Survey

Directions from the Intersection of US Hwy 550 & US Hwy 64
in Bloomfield, NM to Dugan Production Corporation PGA Unit 2 #4R
1903' FSL & 664' FEL, Section 2, T23N, R11W, N.M.P.M., San Juan County, NM
Latitude: 36.253466°N Longitude: 107.966387°W Datum: NAD1983

From the intersection of US Hwy 550 & US Hwy 64 in Bloomfield, NM, travel Southerly on US Hwy 550 for 27.9 miles to State Hwy #57 @ Mile Marker 123.4;

Go Right (South-westerly) on State Hwy #57 for 3.2 miles to fork in roadway;

Go Left (South-westerly) remaining on State Hwy #57 for 2.6 miles to fork in roadway;

Go Right (Westerly) exiting State Hwy #57 onto County Road #7635 for 0.9 miles to fork in roadway;

Go Left (Southerly) remaining on County Road #7635 for 1.4 miles to fork in roadway;

Go Right (Westerly) exiting County Road #7635 onto County Road #7515 for 0.7 miles to fork in roadway;

Go Left (South-westerly) exiting County Road #7515 onto existing roadway for 1.4 miles to fork in roadway;

Go Right (Westerly) for 2.0 miles to fork in roadway;

Go Left (Westerly) which is straight for 0.2 miles to fork in roadway;

Go Right (Westerly) which is straight for 0.5 miles to fork in roadway;

Go Left (Southerly) for 0.7 miles to existing Dugan PGA Unit 2 #4 location, on which is also staked Dugan PGA Unit 2 #4R location.

Pickford, Katherine, EMNRD

From: Kurt Fagrelus <kfagrelus@duganproduction.com>
Sent: Friday, September 22, 2017 11:43 AM
To: Pickford, Katherine, EMNRD
Subject: RE: PGA Unit 2@ #4R

Hello Kate, Dugan Production intends to plug and abandon the PGA 2 #4 well. The PGA 2 #4R well is a replacement well for the PGA 2 #4 and is located on the same pad. The PGA 2 #4 was acidized and will not be fracture stimulated. Our intent is to P&A the PGA 2 #4 prior to drilling and fracture stimulating the PGA 2 #4R.

Thank you,

Kurt Fagrelus
Dugan Production Corp.
505-325-1821 Office
505-320-8248 Cell

From: Pickford, Katherine, EMNRD [mailto:Katherine.Pickford@state.nm.us]
Sent: Friday, September 22, 2017 11:35 AM
To: Kurt Fagrelus
Subject: PGA Unit 2@ #4R

Hi Kurt,

In reading the special pool rules for the Basin Fruitland Coal, it appears to me that an infill well in a spacing unit must be located in the quarter section not occupied by the initial well.

The PGA Unit 2 #004 is located in the same quarter section as that proposed for the PGA Unit 2 #4R.

Additionally, the #004 still shows up in our system as "new" even though it has been drilled.

I am not clear as to Dugan's intention for the #004 and under the special pools rules for the BFC, the proposal for the #4R does not appear to comply with the rules.

Please let me know if you have more information for these wells.

Thanks,

Kate Pickford
Geoscientist
OCD District III
1000 Rio Brazos Rd
Aztec, NM 87410
505-334-6178 Ext 114
505-334-6170 (fax)



State of New Mexico
Energy, Minerals and Natural Resources Department

Susana Martinez
Governor

Ken McQueen
Cabinet Secretary

Matthias Sayer
Deputy Cabinet Secretary

David R. Catanach, Division Director
Oil Conservation Division



New Mexico Oil Conservation Division Conditions of Approval
C-101 Application for Permit to Drill

Operator Signature Date: 9-18-17

Well information:

Operator Dugan, Well Name and Number PGA Unit 2 #4R

API# 30-045-35852, Section 2, Township 23 N/S, Range 11 E/W

Conditions of Approval: (See the below checked and handwritten conditions)

- ☒ Notify Aztec OCD 24hrs prior to casing & cement.
- ☐ Hold C-104 for directional survey & "As Drilled" Plat
- ☒ Hold C-104 for NSL, NSP, DHC status change on well 30-045-35468
PGA Unit 2 #4
- ☐ Spacing rule violation. Operator must follow up with change of status notification on other well to be shut in or abandoned
- ☐ Regarding the use of a pit, closed loop system or below grade tank, the operator must comply with the following as applicable:
 - A pit requires a complete C-144 be submitted and approved prior to the construction or use of the pit, pursuant to 19.15.17.8.A
 - A closed loop system requires notification prior to use, pursuant to 19.15.17.9.A
 - A below grade tank requires a registration be filed prior to the construction or use of the below grade tank, pursuant to 19.15.17.8.C
- ☒ Once the well is spud, to prevent ground water contamination through whole or partial conduits from the surface, the operator shall drill without interruption through the fresh water zone or zones and shall immediately set in cement the water protection string
- ☐ Submit Gas Capture Plan form prior to spudding or initiating recompletion operations
- ☒ Regarding Hydraulic Fracturing, review EPA Underground Injection Control Guidance 84
- ☒ Oil base muds are not to be used until fresh water zones are cased and cemented providing isolation from the oil or diesel. This includes synthetic oils. Oil based mud, drilling fluids and solids must be contained in a steel closed loop system.
- ☒ Well-bore communication is regulated under 19.15.29 NMAC. This requires well-bore Communication to be reported in accordance with 19.15.29.8.

Charles Hernandez
NMOCD Approved by Signature

9-28-2017
Date