

RECEIVED

Amended

Form 3160-5  
(June 2015)

UNITED STATES  
DEPARTMENT OF THE INTERIOR  
BUREAU OF LAND MANAGEMENT  
Farmington Field Office  
Bureau of Land Management

FORM APPROVED  
OMB No. 1004-0137  
Expires: January 31, 2018

**SUNDRY NOTICES AND REPORTS ON WELLS**  
**Do not use this form for proposals to drill or to re-enter an abandoned well. Use Form 3160-3 (APD) for such proposals.**

5. Lease Serial No.

NO-G-1310-1841

6. If Indian, Allottee or Tribe Name

SUBMIT IN TRIPLICATE - Other instructions on page 2

1. Type of Well

☒ Oil Well    ☐ Gas Well    ☐ Other

2. Name of Operator

WPX Energy Production, LLC

3a. Address

PO Box 640    Aztec, NM 87410

3b. Phone No. (include area code)  
505-333-1816

7. If Unit of CA/Agreement, Name and/or No.

NMNM-135216A

8. Well Name and No.

W Lybrook Unit 750H

9. API Well No.

30-045-35804

10. Field and Pool or Exploratory Area

Lybrook Mancos W

4. Location of Well (Footage, Sec., T., R., M., or Survey Description)

SHL: 1942 FNL &amp; 2457' FWL, Sec 13, T23N, R9W

BHL: 2524' FSL &amp; 335' FEL, Sec 19 T23N, R8W

11. Country or Parish, State

San Juan, NM

12. CHECK THE APPROPRIATE BOX(ES) TO INDICATE NATURE OF NOTICE, REPORT OR OTHER DATA

TYPE OF SUBMISSION	TYPE OF ACTION			
<input type="checkbox"/> Notice of Intent	<input type="checkbox"/> Acidize	<input type="checkbox"/> Deepen	<input type="checkbox"/> Production (Start/Resume)	<input type="checkbox"/> Water Shut Off
<input checked="" type="checkbox"/> Subsequent Report	<input type="checkbox"/> Alter Casing	<input type="checkbox"/> Hydraulic Fracturing	<input type="checkbox"/> Reclamation	<input type="checkbox"/> Well Integrity
<input type="checkbox"/> Final Abandonment Notice	<input type="checkbox"/> Casing Repair	<input type="checkbox"/> New Construction	<input type="checkbox"/> Recomplete	<input type="checkbox"/> Other
	<input type="checkbox"/> Change Plans	<input type="checkbox"/> Plug and Abandon	<input type="checkbox"/> Temporarily Abandon	<b>COMPLETION</b>
	<input type="checkbox"/> Convert to Injection	<input type="checkbox"/> Plug Back	<input type="checkbox"/> Water Disposal	

13. Describe Proposed or Completed Operation: Clearly state all pertinent details, including estimated starting date of any proposed work and approximate duration thereof. If the proposal is to deepen directionally or recompleat horizontally, give subsurface locations and measured and true vertical depths of all pertinent markers and zones. Attach the Bond under which the work will be performed or provide the Bond No. on file with BLM/BIA. Required subsequent reports must be filed within 30 days following completion of the involved operations. If the operation results in a multiple completion or recompleat in a new interval, a Form 3160-4 must be filed once testing has been completed. Final Abandonment Notices must be filed only after all requirements, including reclamation, have been completed and the operator has determined that the site is ready for final inspection.)

5/17/17- MIRU. PSI Test Casing @ 6,500#s for 30 Min GOOD TEST

5/18/17- MIRU Halliburton / Basin Wireline. RU PT Wireline and Surface Lines to 5500#. Pressure test lines to 8,500psi, Bleed off pressure and open well, Pressure up to 6,000psi Held for 3 min, walked up to 6,500psi held for 3 min, continually bumping up to 7,000psi Rsi opened @ 7,966 psi dropped to 3,255 psi. RDMO

Perf MC 1<sup>st</sup> stage, 15123'-15127' RSI TOOL with 8, 0.32" holes.

5/19/17-6/18/17- Wait on frac

OIL CONS. DIV DIST. 3

AUG 08 2017

CONFIDENTIAL

14. I hereby certify that the foregoing is true and correct. Name (Printed/Typed)

Marie E. Jaramillo

ACCEPTED FOR RECORD

Title: Permitting Tech III

Signature

Date 7/31/17

AUG 03 2017

FARMINGTON FIELD OFFICE

BY:

THE SPACE FOR FEDERAL OR STATE OFFICE USE

Approved by

Title

Date

Conditions of approval, if any, are attached. Approval of this notice does not warrant or certify that the applicant holds legal or equitable title to those rights in the subject lease which would entitle the applicant to conduct operations thereon.

Office

Title 18 U.S.C Section 1001 and Title 43 U.S.C Section 1212, make it a crime for any person knowingly and willfully to make to any department or agency of the United States any false, fictitious or fraudulent statements or representations as to any matter within its jurisdiction.

5, page 2)

NMCCD

5



## W Lybrook Unit 750H

6/19/17- PSI Test All Lines Up To 9,500Lbs, Test Good

Frac MC 1<sup>st</sup> stage 15123'-15127' - with 20, .32" holes, 1<sup>st</sup> stage with 52,280 # 20/40 PSA Sand  
Perf 2<sup>nd</sup> stage 14917'-15073'- with 20, .32" holes. Frac MC 2<sup>nd</sup> stage with 216400#, 20/40 PSA Sand  
Perf 3<sup>rd</sup> stage 14711'-14867'- with 20, .32" holes. Frac MC 3<sup>rd</sup> stage with 203000#, 20/40 PSA Sand  
Perf 4<sup>th</sup> stage 14505'-14661'- with 20, .32" holes. Frac MC 4<sup>th</sup> stage with 204500#, 20/40 PSA Sand  
Perf 5<sup>th</sup> stage 14304'-14455'- with 20, .32" holes. Frac MC 5<sup>th</sup> stage with 205160#, 20/40 PSA Sand  
Perf 6<sup>th</sup> stage 14093'-14249'- with 20, .32" holes. Frac MC 6<sup>th</sup> stage with 205200#, 20/40 PSA Sand

6/20/17-Perf 7<sup>th</sup> stage 13887'-14043'- with 20, .32" holes. Frac MC 7<sup>th</sup> stage with 205000#, 20/40 PSA Sand

Perf 8<sup>th</sup> stage 13681'-13837'- with 20, .32" holes. Frac MC 8<sup>th</sup> stage with 205600#, 20/40 PSA Sand  
Perf 9<sup>th</sup> stage 13475'-13626'- with 20, .32" holes. Frac MC 9<sup>th</sup> stage with 205300#, 20/40 PSA Sand  
Perf 10<sup>th</sup> stage 13274'-13425'- with 20, .32" holes. Frac MC 10<sup>th</sup> stage with 205800#, 20/40 PSA Sand  
Perf 11<sup>th</sup> stage 13063'-13219'- with 20, .32" holes. Frac MC 11<sup>th</sup> stage with 208460#, 20/40 PSA Sand  
Perf 12<sup>th</sup> stage 12857'-13013'- with 20, .32" holes. Frac MC 12<sup>th</sup> stage with 204800#, 20/40 PSA Sand

6/21/17-Perf 13<sup>th</sup> stage 12651'-12807'- with 20, .32" holes. Frac MC 13<sup>th</sup> stage with 202000#, 20/40 PSA Sand

Perf 14<sup>th</sup> stage 12445'-12596'- with 20, .32" holes. Frac MC 14<sup>th</sup> stage with 206000#, 20/40 PSA Sand  
Perf 15<sup>th</sup> stage 12244'-12395'- with 20, .32" holes. Frac MC 15<sup>th</sup> stage with 204300#, 20/40 PSA Sand  
Perf 16<sup>th</sup> stage 12033'-12189'- with 20, .32" holes. Frac MC 16<sup>th</sup> stage with 203567#, 20/40 PSA Sand  
Perf 17<sup>th</sup> stage 11827'-11983'- with 20, .32" holes. Frac MC 17<sup>th</sup> stage with 203500#, 20/40 PSA Sand  
Perf 18<sup>th</sup> stage 11620'-11777'- with 20, .32" holes. Frac MC 18<sup>th</sup> stage with 207000#, 20/40 PSA Sand

6/22/17-Perf 19<sup>th</sup> stage 11415'-11571'- with 20, .32" holes. Frac MC 19<sup>th</sup> stage with 205000#, 20/40 PSA Sand

Perf 20<sup>th</sup> stage 1209'-11365'- with 20, .32" holes. Frac MC 20<sup>th</sup> stage with 205100#, 20/40 PSA Sand  
Perf 21<sup>st</sup> stage 11003'-11159'- with 20, .32" holes. Frac MC 21<sup>st</sup> stage with 207500#, 20/40 PSA Sand

6/23/17-Perf 22<sup>nd</sup> stage 10797'-10953'- with 20, .32" holes. Frac MC 22<sup>nd</sup> stage with 205000#, 20/40 PSA Sand

Perf 23<sup>rd</sup> stage 10591'-10747'- with 20, .32" holes. Frac MC 23<sup>rd</sup> stage with 205100#, 20/40 PSA Sand  
Perf 24<sup>th</sup> stage 10385'-10541'- with 20, .32" holes. Frac MC 24<sup>th</sup> stage with 205500#, 20/40 PSA Sand  
Perf 25<sup>th</sup> stage 10179'-10335'- with 20, .32" holes. Frac MC 25<sup>th</sup> stage with 205500#, 20/40 PSA Sand

6/24/17-Perf 26<sup>th</sup> stage 9973'-10129'- with 20, .32" holes. Frac MC 26<sup>th</sup> stage with 205600#, 20/40 PSA Sand

Perf 27<sup>th</sup> stage 9767'-9920'- with 20, .32" holes. Frac MC 27<sup>th</sup> stage with 206000#, 20/40 PSA Sand  
Perf 28<sup>th</sup> stage 9561'-9717'- with 20, .32" holes. Frac MC 28<sup>th</sup> stage with 205300#, 20/40 PSA Sand

6/25/17-Perf 29<sup>th</sup> stage 9355'-9511'- with 20, .32" holes. Frac MC 29<sup>th</sup> stage with 206500#, 20/40 PSA Sand

Perf 30<sup>th</sup> stage 9149'-9305'- with 20, .32" holes. Frac MC 30<sup>th</sup> stage with 207500#, 20/40 PSA Sand  
Perf 31<sup>st</sup> stage 8943'-9099'- with 20, .32" holes. Frac MC 31<sup>st</sup> stage with 205000#, 20/40 PSA Sand

Perf 32<sup>nd</sup> stage 8737'-8893'- with 20, .32" holes. Frac MC 32<sup>nd</sup> stage with 208000#, 20/40 PSA Sand

6/26/17-Perf 33<sup>rd</sup> stage 8531'-8687'- with 20, .32" holes. Frac MC 33<sup>rd</sup> stage with 206000#, 20/40 PSA Sand

Perf 34<sup>th</sup> stage 8325'-8481'- with 20, .32" holes. Frac MC 34<sup>th</sup> stage with 206500#, 20/40 PSA Sand  
Perf 35<sup>th</sup> stage 8119'-8275'- with 20, .32" holes. Frac MC 35<sup>th</sup> stage with 208000#, 20/40 PSA Sand

6/27/17-Perf 36<sup>th</sup> stage 7915'-8069'- with 20, .32" holes. Frac MC 36<sup>th</sup> stage with 205500#, 20/40 PSA Sand

Perf 37<sup>th</sup> stage 7707'-7863'- with 20, .32" holes. Frac MC 37<sup>th</sup> stage with 207000#, 20/40 PSA Sand  
Perf 38<sup>th</sup> stage 7501'-7658'- with 20, .32" holes. Frac MC 38<sup>th</sup> stage with 205600#, 20/40 PSA Sand

Perf 39<sup>th</sup> stage 7295'-7451'- with 20, .32" holes. Frac MC 39<sup>th</sup> stage with 203000#, 20/40 PSA Sand

6/28/17-Perf 40<sup>th</sup> stage 7089'-7245'- with 20, .32" holes. Frac MC 40<sup>th</sup> stage with 203900#, 20/40 PSA Sand

Perf 41<sup>st</sup> stage 6883'-7039'- with 20, .32" holes. Frac MC 41<sup>st</sup> stage with 203000#, 20/40 PSA Sand  
Perf 42<sup>nd</sup> stage 6677'-6833'- with 20, .32" holes. Frac MC 42<sup>nd</sup> stage with 206800#, 20/40 PSA Sand

Perf 43<sup>rd</sup> stage 6471'-6627'- with 20, .32" holes. Frac MC 43<sup>rd</sup> stage with 208000#, 20/40 PSA Sand

6/29/17-Perf 44<sup>th</sup> stage 6265'-6421'- with 20, .32" holes. Frac MC 44<sup>th</sup> stage with 204100#, 20/40 PSA Sand

Perf 45<sup>th</sup> stage 6059'-6215'- with 20, .32" holes. Frac MC 45<sup>th</sup> stage with 207200#, 20/40 PSA Sand  
Perf 46<sup>th</sup> stage 5856'-6009'- with 20, .32" holes. Frac MC 46<sup>th</sup> stage with 206500#, 20/40 PSA Sand

Perf 47<sup>th</sup> stage 5647'-5803'- with 20, .32" holes. Frac MC 47<sup>th</sup> stage with 205800#, 20/40 PSA Sand

Set Kill plug @ 5597'

RDMO Halliburton and Basin Wireline

6/30/17-7/1/17- wait on DO

7/2/17-7/9/17MIRU- DO Frac plugs. RIH CO to RSI

7/10/17- Pull tie back. Land Production string /Gas lift system. Landed @ 5,601'. 7 Jnts of 2 3/8" 4.7# j-55, 160 Jnts of 2 7/8" 6.5# J-55. Packer set @ 5,346', 8 Gas Lift Valves

7/11/17- Gas & Oil Delivery

Choke Size= 96/64", Tbg Prsr=255, Csg Prsr= 640 psi, Sep Prsr= 78 psi, Sep Temp= 93 degrees F, Flow Line Temp= 83 degrees F, Flow Rate= 264 mcf/d, 24hr Fluid Avg= 8.67 bph, 24hr Wtr= 169 bbls, 24hr Wtr Avg= 7.04 ph, Total Wtr Accum= 169 bbls, 24hr Oil= 39 bbls, 24hr Oil Avg= 1.63 bph, 24hr Fluid= 208bbls

# W LYBROOK UNIT #750H

## Lybrook Mancos W

(page 1)

Amended

Spud: 3/1/17

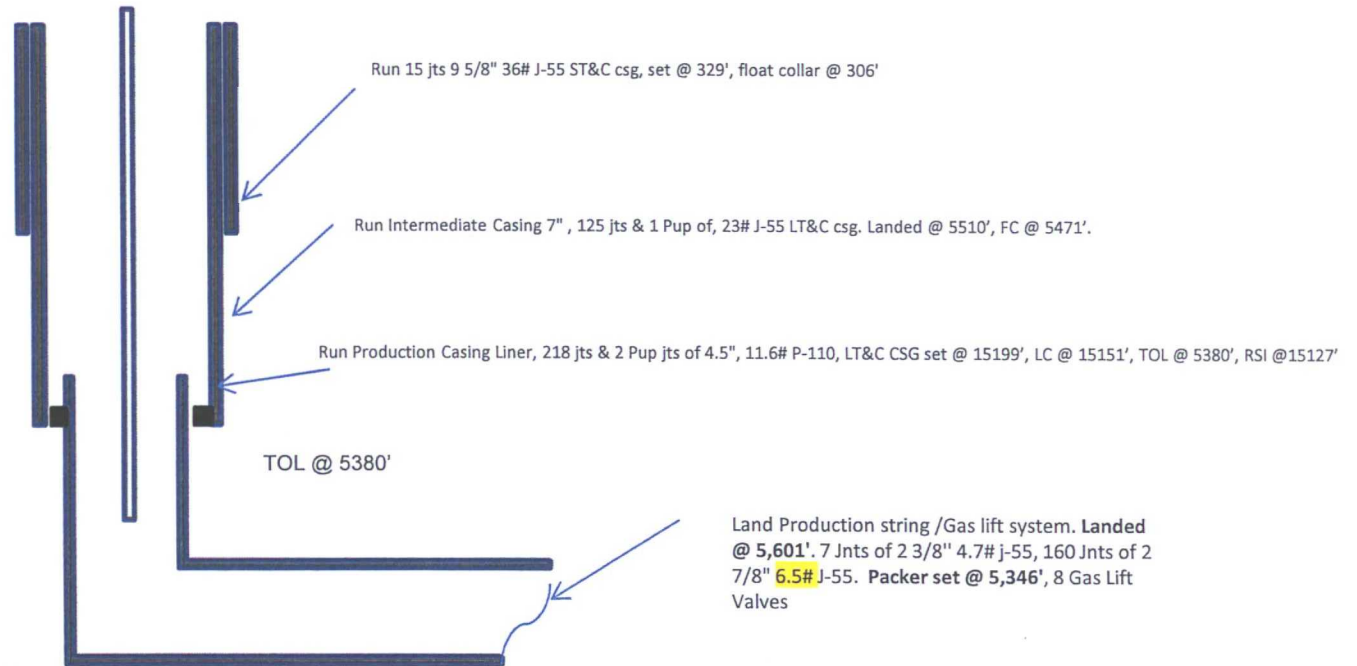
Completed: 7/10/17

SHL: 1942 FNL & 2457' FWL  
SE/4 NW/4 Section 13 (F), T23N, R9W

BHL: 2524' FSL & 335' FEL  
NE/4 SE/4 Section 19 (I), T23N, R8W

San Juan, NM  
Elevation: 6700'  
API: 30-045-35804

	MD	TVD
OJO ALAMO	476	476
KIRTLAND	638	638
PICTURED CLIFFS	1095	1091
LEWIS	1307	1299
CHACRA	1517	1501
CLIFF HOUSE	2714	2603
MENEFEE	2725	2613
POINT LOOKOUT	3730	3541
MANCOS	3928	3723
GALLUP	4299	4068



TD: 15205'MD  
TVD: 4817'  
PBTD: 15151' MD

### Mancos Frac-

5647'-15127' 'w .32" diameter- 4spf total

of 928 holes. w/ 47 stages 20/40 sand

total of 9,517,367#

LG 7/27/17

HOLE SIZE	CASING	CEMENT	VOLUME	CMT TOP
12-1/4"	9-5/8"	101 sx	162 cu.ft.	Surface
8-3/4"	7"	940 sx	1505 cu. ft.	Surface
6-1/8"	4-1/2"	920 sx	1246 cu. ft.	5380' TOL



RECEIVED

JUL 28 2017

Form 3160-5  
(June 2015)

UNITED STATES  
DEPARTMENT OF THE INTERIOR  
BUREAU OF LAND MANAGEMENT

FORM APPROVED  
OMB No. 1004-0137  
Expires: January 31, 2018

**SUNDRY NOTICES AND REPORTS ON WELLS**  
**Do not use this form for proposals to drill or to re-enter an abandoned well. Use Form 3160-3 (APD) for such proposals.**

5. Lease Serial No.

**N0-G-1310-1841**

6. If Indian, Allottee or Tribe Name

SUBMIT IN TRIPLICATE - Other instructions on page 2

7. If Unit of CA/Agreement, Name and/or No.

**NMNM-135216A**

1. Type of Well

☒ Oil Well☐ Gas Well☐ Other

8. Well Name and No.

**W Lybrook Unit 750H**

2. Name of Operator

**WPX Energy Production, LLC**

9. API Well No.

**30-045-35804**

3a. Address

**PO Box 640 Aztec, NM 87410**

3b. Phone No. (include area code)

505-333-1816

10. Field and Pool or Exploratory Area

**Lybrook Mancos W**

11. Country or Parish, State

**San Juan, NM**

4. Location of Well (Footage, Sec., T., R., M., or Survey Description)

**SHL: 1942 FNL & 2457' FWL, Sec 13, T23N, R9W****BHL: 2524' FSL & 335' FEL, Sec 19 T23N, R8W**

12. CHECK THE APPROPRIATE BOX(ES) TO INDICATE NATURE OF NOTICE, REPORT OR OTHER DATA

TYPE OF SUBMISSION	TYPE OF ACTION			
<input type="checkbox"/> Notice of Intent	<input type="checkbox"/> Acidize	<input type="checkbox"/> Deepen	<input type="checkbox"/> Production (Start/Resume)	<input type="checkbox"/> Water ShutOff
<input checked="" type="checkbox"/> Subsequent Report	<input type="checkbox"/> Alter Casing	<input type="checkbox"/> Hydraulic Fracturing	<input type="checkbox"/> Reclamation	<input type="checkbox"/> Well Integrity
<input type="checkbox"/> Final Abandonment Notice	<input type="checkbox"/> Casing Repair	<input type="checkbox"/> New Construction	<input type="checkbox"/> Recomplete	<input type="checkbox"/> Other
	<input type="checkbox"/> Change Plans	<input type="checkbox"/> Plug and Abandon	<input type="checkbox"/> Temporarily Abandon	<b>COMPLETION</b>
	<input type="checkbox"/> Convert to Injection	<input type="checkbox"/> Plug Back	<input type="checkbox"/> Water Disposal	

13. Describe Proposed or Completed Operation: Clearly state all pertinent details, including estimated starting date of any proposed work and approximate duration thereof. If the proposal is to deepen directionally or recomple horizontally, give subsurface locations and measured and true vertical depths of all pertinent markers and zones. Attach the Bond under which the work will be performed or provide the Bond No. on file with BLM/BIA. Required subsequent reports must be filed within 30 days following completion of the involved operations. If the operation results in a multiple completion or recompletion in a new interval, a Form 3160-4 must be filed once testing has been completed. Final Abandonment Notices must be filed only after all requirements, including reclamation, have been completed and the operator has determined that the site is ready for final inspection.)

5/17/17- MIRU. PSI Test Casing @ 6,500#s for 30 Min GOOD TEST

5/18/17- MIRU Halliburton / Basin Wireline. RU PT Wireline and Surface Lines to 5500#. Pressure test lines to 8,500psi, Bleed off pressure and open well, Pressure up to 6,000psi Held for 3 min, walked up to 6,500psi held for 3 min. ACCEPTED FOR RECORD 7,000psi Rsi opened @ 7,966 psi dropped to 3,255 psi. RDMO

Perf MC 1<sup>st</sup> stage, 15123'-15127' RSI TOOL with 8, 0.32" holes.

5/19/17-6/18/17- Wait on frac

AUG 10 2017

AUG 01 2017

FARMINGTON FIELD OFFICE

CONFIDENTIAL

14. I hereby certify that the foregoing is true and correct. Name (Printed/Typed)

Lacey Granillo

BY:

Title: Permitting Tech III

Signature

Date 7/27/17

THE SPACE FOR FEDERAL OR STATE OFFICE USE

Approved by

Title

Date

Conditions of approval, if any, are attached. Approval of this notice does not warrant or certify that the applicant holds legal or equitable title to those rights in the subject lease which would entitle the applicant to conduct operations thereon.

Office

Title 18 U.S.C Section 1001 and Title 43 U.S.C Section 1212, make it a crime for any person knowingly and willfully to make to any department or agency of the United States any false, fictitious or fraudulent statements or representations as to any matter within its jurisdiction.

5, page 2)

NMOCD

## W Lybrook Unit 750H

**6/19/17-** PSI Test\*All Lines Up To 9,500Lbs, Test Good

Frac MC 1<sup>st</sup> stage 15123'-15127' - with 20, .32" holes, 1<sup>st</sup> stage with 52,280 # 20/40 PSA Sand

Perf 2<sup>nd</sup> stage 14917'-15073'- with 20, .32" holes. Frac MC 2<sup>nd</sup> stage with 216400#, 20/40 PSA Sand

Perf 3<sup>rd</sup> stage 14711'-14867'- with 20, .32" holes. Frac MC 3<sup>rd</sup> stage with 203000#, 20/40 PSA Sand

Perf 4<sup>th</sup> stage 14505'-14661'- with 20, .32" holes. Frac MC 4<sup>th</sup> stage with 204500#, 20/40 PSA Sand

Perf 5<sup>th</sup> stage 14304'-14455'- with 20, .32" holes. Frac MC 5<sup>th</sup> stage with 205160#, 20/40 PSA Sand

Perf 6<sup>th</sup> stage 14093'-14249'- with 20, .32" holes. Frac MC 6<sup>th</sup> stage with 205200#, 20/40 PSA Sand

**6/20/17-** Perf 7<sup>th</sup> stage 13887'-14043'- with 20, .32" holes. Frac MC 7<sup>th</sup> stage with 205000#, 20/40 PSA Sand

Perf 8<sup>th</sup> stage 13681'-13837'- with 20, .32" holes. Frac MC 8<sup>th</sup> stage with 205600#, 20/40 PSA Sand

Perf 9<sup>th</sup> stage 13475'-13626'- with 20, .32" holes. Frac MC 9<sup>th</sup> stage with 205300#, 20/40 PSA Sand

Perf 10<sup>th</sup> stage 13274'-13425'- with 20, .32" holes. Frac MC 10<sup>th</sup> stage with 205800#, 20/40 PSA Sand

Perf 11<sup>th</sup> stage 13063'-13219'- with 20, .32" holes. Frac MC 11<sup>th</sup> stage with 208460#, 20/40 PSA Sand

Perf 12<sup>th</sup> stage 12857'-13013'- with 20, .32" holes. Frac MC 12<sup>th</sup> stage with 204800#, 20/40 PSA Sand

**6/21/17-** Perf 13<sup>th</sup> stage 12651'-12807'- with 20, .32" holes. Frac MC 13<sup>th</sup> stage with 202000#, 20/40 PSA Sand

Perf 14<sup>th</sup> stage 12445'-12596'- with 20, .32" holes. Frac MC 14<sup>th</sup> stage with 206000#, 20/40 PSA Sand

Perf 15<sup>th</sup> stage 12244'-12395'- with 20, .32" holes. Frac MC 15<sup>th</sup> stage with 204300#, 20/40 PSA Sand

Perf 16<sup>th</sup> stage 2033'-12189'- with 20, .32" holes. Frac MC 16<sup>th</sup> stage with 203567#, 20/40 PSA Sand

Perf 17<sup>th</sup> stage 11827'-11983'- with 20, .32" holes. Frac MC 17<sup>th</sup> stage with 203500#, 20/40 PSA Sand

Perf 18<sup>th</sup> stage 11620'-11777'- with 20, .32" holes. Frac MC 18<sup>th</sup> stage with 207000#, 20/40 PSA Sand

**6/22/17-** Perf 19<sup>th</sup> stage 11415'-11571'- with 20, .32" holes. Frac MC 19<sup>th</sup> stage with 205000#, 20/40 PSA Sand

Perf 20<sup>th</sup> stage 1209'-11365'- with 20, .32" holes. Frac MC 20<sup>th</sup> stage with 205100#, 20/40 PSA Sand

Perf 21<sup>st</sup> stage 11003'-11159'- with 20, .32" holes. Frac MC 21<sup>st</sup> stage with 207500#, 20/40 PSA Sand

**6/23/17-** Perf 22<sup>nd</sup> stage 10797'-10953'- with 20, .32" holes. Frac MC 22<sup>nd</sup> stage with 205000#, 20/40 PSA Sand

Perf 23<sup>rd</sup> stage 10591'-10747'- with 20, .32" holes. Frac MC 23<sup>rd</sup> stage with 205100#, 20/40 PSA Sand

Perf 24<sup>th</sup> stage 10385'-10541'- with 20, .32" holes. Frac MC 24<sup>th</sup> stage with 205500#, 20/40 PSA Sand

Perf 25<sup>th</sup> stage 10179'-10335'- with 20, .32" holes. Frac MC 25<sup>th</sup> stage with 205500#, 20/40 PSA Sand

**6/24/17-** Perf 26<sup>th</sup> stage 9973'-10129'- with 20, .32" holes. Frac MC 26<sup>th</sup> stage with 205600#, 20/40 PSA Sand

Perf 27<sup>th</sup> stage 9767'-9920'- with 20, .32" holes. Frac MC 27<sup>th</sup> stage with 206000#, 20/40 PSA Sand

Perf 28<sup>th</sup> stage 9561'-9717'- with 20, .32" holes. Frac MC 28<sup>th</sup> stage with 205300#, 20/40 PSA Sand

**6/25/17-** Perf 29<sup>th</sup> stage 9355'-9511'- with 20, .32" holes. Frac MC 29<sup>th</sup> stage with 206500#, 20/40 PSA Sand

Perf 30<sup>th</sup> stage 9149'-9305'- with 20, .32" holes. Frac MC 30<sup>th</sup> stage with 207500#, 20/40 PSA Sand

Perf 31<sup>st</sup> stage 8943'-9099'- with 20, .32" holes. Frac MC 31<sup>st</sup> stage with 205000#, 20/40 PSA Sand

Perf 32<sup>nd</sup> stage 8737'-8893'- with 20, .32" holes. Frac MC 32<sup>nd</sup> stage with 208000#, 20/40 PSA Sand

**6/26/17-** Perf 33<sup>rd</sup> stage 8531'-8687'- with 20, .32" holes. Frac MC 33<sup>rd</sup> stage with 206000#, 20/40 PSA Sand

Perf 34<sup>th</sup> stage 8325'-8481'- with 20, .32" holes. Frac MC 34<sup>th</sup> stage with 206500#, 20/40 PSA Sand

Perf 35<sup>th</sup> stage 8119'-8275'- with 20, .32" holes. Frac MC 35<sup>th</sup> stage with 208000#, 20/40 PSA Sand

**6/27/17-** Perf 36<sup>th</sup> stage 7915'-8069'- with 20, .32" holes. Frac MC 36<sup>th</sup> stage with 205500#, 20/40 PSA Sand

Perf 37<sup>th</sup> stage 7707'-7863'- with 20, .32" holes. Frac MC 37<sup>th</sup> stage with 207000#, 20/40 PSA Sand

Perf 38<sup>th</sup> stage 7501'-7658'- with 20, .32" holes. Frac MC 38<sup>th</sup> stage with 205600#, 20/40 PSA Sand

Perf 39<sup>th</sup> stage 7295'-7451'- with 20, .32" holes. Frac MC 39<sup>th</sup> stage with 203000#, 20/40 PSA Sand

**6/28/17-** Perf 40<sup>th</sup> stage 7089'-7245'- with 20, .32" holes. Frac MC 40<sup>th</sup> stage with 203900#, 20/40 PSA Sand

Perf 41<sup>st</sup> stage 6883'-7039'- with 20, .32" holes. Frac MC 41<sup>st</sup> stage with 203000#, 20/40 PSA Sand

Perf 42<sup>nd</sup> stage 6677'-6833'- with 20, .32" holes. Frac MC 42<sup>nd</sup> stage with 206800#, 20/40 PSA Sand

Perf 43<sup>rd</sup> stage 6471'-6627'- with 20, .32" holes. Frac MC 43<sup>rd</sup> stage with 208000#, 20/40 PSA Sand

**6/29/17-** Perf 44<sup>th</sup> stage 6265'-6421'- with 20, .32" holes. Frac MC 44<sup>th</sup> stage with 204100#, 20/40 PSA Sand

Perf 45<sup>th</sup> stage 6059'-6215'- with 20, .32" holes. Frac MC 45<sup>th</sup> stage with 207200#, 20/40 PSA Sand

Perf 46<sup>th</sup> stage 5856'-6009'- with 20, .32" holes. Frac MC 46<sup>th</sup> stage with 206500#, 20/40 PSA Sand

Perf 47<sup>th</sup> stage 5647'-5803'- with 20, .32" holes. Frac MC 47<sup>th</sup> stage with 205800#, 20/40 PSA Sand

Set Kill plug @ 5597'

RDMO Halliburton and Basin Wireline

**6/30/17-7/1/17-** wait on DO

**7/2/17-7/9/17** MIRU- DO Frac plugs. RIH CO to RSI

**7/10/17-** Pull tie back. RIH with Production string /Gas lift system. Landed @ 5,601'. 7 Jnts of 2 3/8" 4.7# j-55, 160 Jnts of 2 7/8" 4.7# J-55. Packer set @ 5,346', 8 Gas Lift Valves

**7/11/17-** Gas & Oil Delivery

Choke Size= 96/64", Tbg Prsr=255, Csg Prsr= 640 psi, Sep Prsr= 78 psi, Sep Temp= 93 degrees F, Flow Line Temp= 83 degrees F, Flow Rate= 264 mcf/d, 24hr Fluid Avg= 8.67 bph, 24hr Wtr= 169 bbbls, 24hr Wtr Avg= 7.04 ph, Total Wtr Accum= 169 bbbls, 24hr Oil= 39 bbbls, 24hr Oil Avg= 1.63 bph, 24hr Fluid= 208bbbls