

Submit 1 Copy To Appropriate District Office
District I - (575) 393-6161
1625 N. French Dr., Hobbs, NM 88240
District II - (575) 748-1283
811 S. First St., Artesia, NM 88210
District III - (505) 334-6178
1000 Rio Brazos Rd., Aztec, NM 87410
District IV - (505) 476-3460
1220 S. St. Francis Dr., Santa Fe, NM 87505

State of New Mexico
Energy, Minerals and Natural Resources

Form C-103
Revised July 18, 2013

OIL CONSERVATION DIVISION
1220 South St. Francis Dr.
Santa Fe, NM 87505

| |
|---|
| WELL API NO. 30-045-25719 |
| 5. Indicate Type of Lease STATE <input checked="" type="checkbox"/> FEE <input type="checkbox"/> |
| 6. State Oil & Gas Lease No. E-7122 |
| 7. Lease Name or Unit Agreement Name Arco State |
| 8. Well Number 102 |
| 9. OGRID Number 018973 |
| 10. Pool name or Wildcat Armenta Gallup |

SUNDRY NOTICES AND REPORTS ON WELLS
(DO NOT USE THIS FORM FOR PROPOSALS TO DRILL OR TO DEEPEN OR PLUG BACK TO A DIFFERENT RESERVOIR. USE "APPLICATION FOR PERMIT" (FORM C-101) FOR SUCH PROPOSALS.)

1. Type of Well: Oil Well ☒ Gas Well ☐ Other ☐

2. Name of Operator
Redwolf Production, Inc.

3. Address of Operator
P. O. Box 5382 Farmington, NM 87499

4. Well Location
Unit Letter **D** : **820** feet from the **North** line and **656** feet from the **West** line
Section **36** Township **29N** Range **11W** NMPM **San Juan** County

11. Elevation (Show whether DR, RKB, RT, GR, etc.)
5676' GR

12. Check Appropriate Box to Indicate Nature of Notice, Report or Other Data

NOTICE OF INTENTION TO:

PERFORM REMEDIAL WORK ☐ PLUG AND ABANDON ☒
TEMPORARILY ABANDON ☐ CHANGE PLANS ☐
PULL OR ALTER CASING ☐ MULTIPLE COMPL ☐
DOWNHOLE COMMINGLE ☐
CLOSED-LOOP SYSTEM ☐
OTHER: ☐

SUBSEQUENT REPORT OF:

REMEDIAL WORK ☐ ALTERING CASING ☐
COMMENCE DRILLING OPNS. ☐ P AND A ☐
CASING/CEMENT JOB ☐
OTHER: ☐

13. Describe proposed or completed operations. (Clearly state all pertinent details, and give pertinent dates, including estimated date of starting any proposed work). SEE RULE 19.15.7.14 NMAC. For Multiple Completions: Attach wellbore diagram of proposed completion or recompletion.

Redwolf Production, Inc. proposes to plug and abandon the subject well according to the attached procedure.

OIL CONS. DIV DIST. 3

Notify NMOCD 24 hrs
prior to beginning
operations

JAN 08 2018

Plug #1 OK
Plug #2 4590-4490 Marcos top = 4540
Plug #3 3445-3345 mesaverde top = 3395
Plug #4 2870-2770 Chacra top = 2820
Plug #5 1880-1780 P.C. top = 1830
Plug #6 1540-1440 Fruitland top = 1490
Plug #7 818-493' Kirtland top = 768 / Ojo top = 676
Plug #8 100-0 Surface

Spud Date:

Rig Release Date:

File a Copy of the Prior CBL or run a current CBL prior to cementing
I hereby certify that the information above is true and complete to the best of my knowledge and belief.

SIGNATURE Dana S. Delventhal TITLE Vice President DATE 1/4/18

Type or print name Dana L. Delventhal E-mail address: ddelventhal@centurylink.net PHONE: (505) 326-4125

For State Use Only

APPROVED BY: Bob Bell TITLE Deputy Oil & Gas Inspector, District #3 DATE 1/10/18

Conditions of Approval (if any): # See above AV

JAN 08 2018

Arco State No. 102

Proposed Plugging Procedure

1. Set cast iron bridge plug at 5340' and cap with an 8 sx plug from 5340' to 5240'.

All cement plugs will consist of Class B cement mixed at 15.6 ppg, with a yield of 1.18 cf/sx.

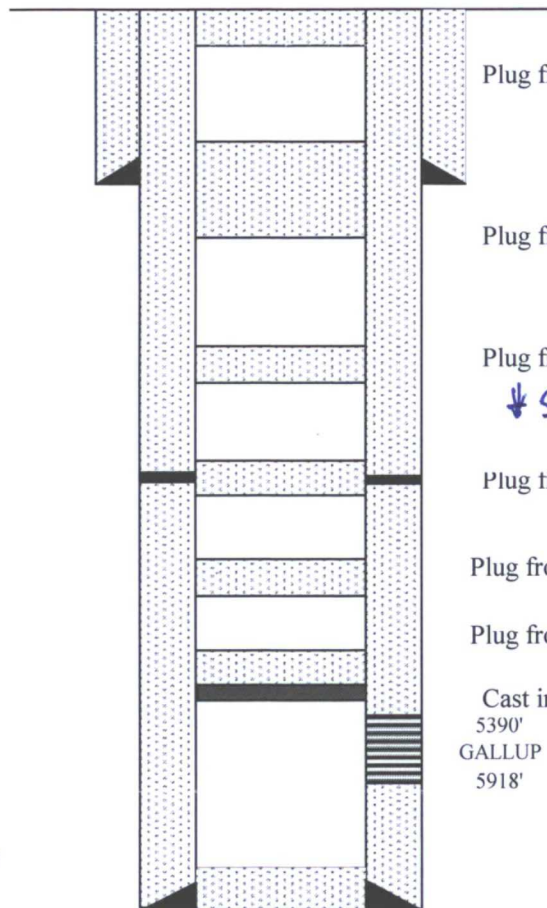
2. Place 8 sx plug from ~~4198'~~ to ~~4098'~~. 4590' - 4490'
3. Place 8 sx plug from ~~3243'~~ to ~~3143'~~. 3445' - 3345'
- ✓ 4. Place 8 sx plug from ~~1878'~~ to ~~1778'~~. 2870' - 2770'
5. Place 18 sx plug from ~~726'~~ to ~~493'~~. 1880' - 1780'
6. Place 8 sx plug from 100' to Surface. 818' - 493'
7. Cut off wellhead and erect dry hole marker.
8. Reclaim location.

JAN 08 2018

Arco State No. 102 (Proposed)

820' FNL, 656' FWL
Sec. 36, T29N, R11W8 5/8", 24# CSA 543'
CMT W/ 365 SX CMT

DV TOOL AT 3193'

4 1/2", 11.6#
CASING SET AT 6003'
W/ 540 SX CMT
PBD 5962'

Plug from 100' to Surface

Plug from 493' to ⁸¹⁸~~726'~~Plug from ~~1778'~~ to 1878'

* See revised plug depths

Plug from ~~3143'~~ to ~~3243'~~Plug from ~~4098'~~ to 4198'Plug from ~~5240'~~ to 5340'Cast iron bridge plug at 5340'
5390'
GALLUP
5918'