

RECEIVED

Form 3160-5
(August 2007)

UNITED STATES
DEPARTMENT OF THE INTERIOR
BUREAU OF LAND MANAGEMENT

JAN 24 2018

FORM APPROVED
OMB No. 1004-0137
Expires: July 31, 2010

Farmington Field Office
Bureau of Land Management

NMSF-078277

SUNDRY NOTICES AND REPORTS ON WELLS
Do not use this form for proposals to drill or to re-enter an abandoned well. Use Form 3160-3 (APD) for such proposals.

SUBMIT IN TRIPLICATE - Other instructions on page 2.

1. Type of Well

☐ Oil Well

☒ Gas Well

☐ Other

2. Name of Operator

Hilcorp Energy Company

3a. Address

PO Box 4700, Farmington, NM 87499

3b. Phone No. (include area code)

505-599-3400

5. Lease Serial No.

6. If Indian Allottee or Tribe Name

7. If Unit of CA/Agreement, Name and/or No.

8. Well Name and No.

San Juan 29-5 Unit 20C

9. API Well No.

30-039-29334

4. Location of Well (Footage, Sec., T., R., M., or Survey Description)

Surface Unit C (NENW) 295'FNL & 2120' FWL, Sec. 7, T29N, R05W

10. Field and Pool or Exploratory Area

Gobenador PC/Blanco Mesaverde

11. Country or Parish, State

Rio Arriba, New Mexico

12. CHECK THE APPROPRIATE BOX(ES) TO INDICATE NATURE OF NOTICE, REPORT OR OTHER DATA

TYPE OF SUBMISSION

TYPE OF ACTION

☒ Notice of Intent

☐ Acidize

☐ Deepen

☐ Production (Start/Resume)

☐ Water Shut-Off

☐ Subsequent Report

☐ Alter Casing

☐ Fracture Treat

☐ Reclamation

☐ Well Integrity

☐ Casing Repair

☐ New Construction

☒ Recomplete

☐ Other

☐ Change Plans

☐ Plug and Abandon

☐ Temporarily Abandon

☐ Final Abandonment Notice

☐ Convert to Injection

☐ Plug Back

☐ Water Disposal

13. Describe Proposed or Completed Operation: Clearly state all pertinent details, including estimated starting date of any proposed work and approximate duration thereof.

If the proposal is to deepen directionally or recomplete horizontally, give subsurface locations and measured and true vertical depths of all pertinent markers and zones. Attach the bond under which the work will be performed or provide the Bond No. on file with BLM/BIA. Required subsequent reports must be filed within 30 days following completion of the involved operations. If the operation results in a multiple completion or recompletion in a new interval, a Form 3160-4 must be filed once Testing has been completed. Final Abandonment Notices must be filed only after all requirements, including reclamation, have been completed and the operator has determined that the site is ready for final inspection.)

Hilcorp Energy Company plans to recomplete the subject well in the Pictured Cliffs formation and downhole commingle the existing Mesaverde with the Pictured Cliffs. Attached is the PC C102, recomplete procedure & wellbore schematic. The DHC application will be submitted and approved before the work proceeds.

OIL CONS. DIV DIST. 3

JAN 30 2018

Notify NMOCD 24 hrs
prior to beginning
operations

BLM'S APPROVAL OR ACCEPTANCE OF THIS
ACTION DOES NOT RELIEVE THE LESSEE AND
OPERATOR FROM OBTAINING ANY OTHER
AUTHORIZATION REQUIRED FOR OPERATIONS
ON FEDERAL AND INDIAN LANDS

14. I hereby certify that the foregoing is true and correct. Name (Printed/Typed)

Etta Trujillo

Title Operations/Regulatory Technician - Sr.

Signature

Date

1-24-18

THIS SPACE FOR FEDERAL OR STATE OFFICE USE

Approved by

William Tambekou

Title

Petroleum Engineer

Date

1/25/2018

Conditions of approval, if any, are attached. Approval of this notice does not warrant or certify that the applicant holds legal or equitable title to those rights in the subject lease which would entitle the applicant to conduct operations thereon.

Office

FFO

Title 18 U.S.C. Section 1001 and Title 43 U.S.C. Section 1212, make it a crime for any person knowingly and willfully to make to any department or agency of the United States any false, fictitious or fraudulent statements or representations as to any matter within its jurisdiction.

(Instruction on page 2)

NMOCD

4

District I

1625 N. French Dr., Hobbs, NM 88240
Phone:(575) 393-6161 Fax:(575) 393-0720

District II

811 S. First St., Artesia, NM 88210
Phone:(575) 748-1283 Fax:(575) 748-9720

District III

1000 Rio Brazos Rd., Aztec, NM 87410
Phone:(505) 334-6178 Fax:(505) 334-6170

District IV

1220 S. St Francis Dr., Santa Fe, NM 87505
Phone:(505) 476-3470 Fax:(505) 476-3462

State of New Mexico
Energy, Minerals and Natural
Resources
Oil Conservation Division
1220 S. St Francis Dr.
Santa Fe, NM 87505

Form C-102
August 1, 2011

Permit 247319

WELL LOCATION AND ACREAGE DEDICATION PLAT

1. API Number 30-039-29334	2. Pool Code 77440	3. Pool Name GOBERNADOR PICTURED CLIFFS (GAS)
4. Property Code 318837	5. Property Name SAN JUAN 29 5 UNIT	6. Well No. 020C
7. OGRID No. 372171	8. Operator Name HILCORP ENERGY COMPANY	9. Elevation 6544

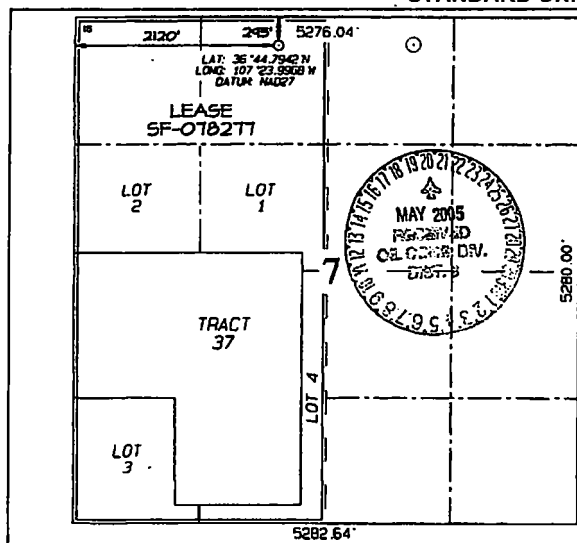
10. Surface Location

UL - Lot C	Section 7	Township 29N	Range 05W	Lot Idn	Feet From 295	N/S Line N	Feet From 2120	E/W Line W	County RIO ARRIBA
---------------	--------------	-----------------	--------------	---------	------------------	---------------	-------------------	---------------	----------------------

11. Bottom Hole Location If Different From Surface

UL - Lot	Section	Township	Range	Lot Idn	Feet From	N/S Line	Feet From	E/W Line	County
12. Dedicated Acres 208.90 328.00 W/2	13. Joint or Infill	14. Consolidation Code	15. Order No.						

NO ALLOWABLE WILL BE ASSIGNED TO THIS COMPLETION UNTIL ALL INTERESTS HAVE BEEN CONSOLIDATED OR A NON-STANDARD UNIT HAS BEEN APPROVED BY THE DIVISION

**OPERATOR CERTIFICATION**

I hereby certify that the information contained herein is true and complete to the best of my knowledge and belief, and that this organization either owns a working interest or unleased mineral interest in the land including the proposed bottom hole location(s) or has a right to drill this well at this location pursuant to a contract with an owner of such a mineral or working interest, or to a voluntary pooling agreement or a compulsory pooling order heretofore entered by the division.

E-Signed By: *Etta Trujillo*

Title: Operations / Regulatory Tech Sr

Date: 1/24/2018

SURVEYOR CERTIFICATION

I hereby certify that the well location shown on this plat was plotted from field notes of actual surveys made by me or under my supervision, and that the same is true and correct to the best of my belief.

Surveyed By: Jason C. Edwards

Date of Survey: 8/3/2004

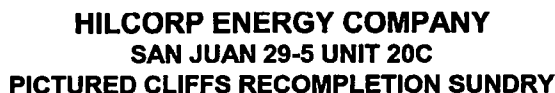
Certificate Number: 15269



HILCORP ENERGY COMPANY
SAN JUAN 29-5 UNIT 20C
PICTURED CLIFFS RECOMPLETION SUNDRY

JOB PROCEDURES

1. MIRU service rig and associated equipment; test BOP.
2. TOOH with 2 3/8" tubing set at 5,696'.
3. Set a 4-1/2" cast iron bridge plug at +/- 3,650' to isolate the ~~Dakota~~ ^{Mesa Verde}. Note: TOC at 2,900' by CBL.
4. Load the hole and pressure test the casing to frac pressure.
5. N/D BOP, N/U frac stack and test frac stack to frac pressure.
6. Perforate and frac the Pictured Cliffs in a single stage (Top Perforation @ 3,480'; Bottom Perforation @ 3,542').
7. Isolate frac stage with a composite bridge plug.
8. Nipple down frac stack, nipple up BOP and test.
9. TIH with a mill and drill out top Pictured Cliffs isolation plug.
10. Clean out to Mesa Verde isolation plug and, when water and sand rates are acceptable, flow test the Pictured Cliffs.
11. Drill out Mesa Verde isolation plug and cleanout to PBTD of 6,018'. TOOH.
12. TIH and land production tubing. Get a commingled Mesa Verde/Pictured Cliffs flow rate.



Current Schematic - Version 3

API / UWI 3003929334	Surface Legal Location 007-029N-005W-C	Field Name MV	License No.	State/Province NEW MEXICO	Well Configuration Type Vertical
Ground Elevation (ft) 6,544.00	Original XRT Elevation (ft) 6,557.00	X3-Ground Distance (ft) 13.00	X3-Casing Flange Distance (ft)	X3-Tubing Hanger Distance (ft)	

MD (ftKB)	TVD (ftKB)	Vertical schematic (actual)
12.1	12.1	
15.1	15.1	
154.4	154.4	
227.7	227.7	
228.7	228.7	
231.0	231.0	
2,629.0	2,624.8	OJO ALAMO (final)
2,629.9	2,629.5	Tubing: 2 3/8 in; 4.70 lb/ft; J-55; 13.0 ftKB; 5,681.0 ftKB
2,699.9	2,699.2	
3,248.1	3,245.6	FRUITLAND (final)
3,422.0	3,431.4	PICTURED CLIFFS (final)
3,744.1	3,743.5	
3,743.7	3,745.2	
3,789.4	3,788.6	
3,790.7	3,790.1	
3,799.9	3,799.3	
4,231.0	4,230.3	LEWIS (final)
4,252.0	4,251.3	
4,499.2	4,498.4	CHACRA MESA (final)
4,784.1	4,782.4	
4,950.1	4,943.4	
4,952.1	4,951.4	
5,032.2	5,031.4	MESA VERDE GROUP (final)
5,035.1	5,079.3	
5,202.5	5,199.7	
5,210.0	5,209.2	
5,322.9	5,321.1	MENEFEE (final)
5,534.2	5,533.3	
5,539.9	5,539.1	
5,511.5	5,511.0	
5,529.1	5,528.3	
5,561.1	5,562.2	Tubing Pup Joint; 2 3/8 in; 5,561.0 ftKB; 5,663.0 ftKB
5,563.1	5,562.2	Tubing; 2 3/8 in; 4.70 lb/ft; J-55; 5,663.0 ftKB; 5,693.7 ftKB
5,574.9	5,574.0	
5,532.6	5,532.7	Profile Nipple; 2 3/8 in; 5,532.7 ftKB; 5,694.5 ftKB
5,534.5	5,534.7	Pump Off Mill; 2 3/8 in; 5,534.5 ftKB; 5,696.1 ftKB
5,596.2	5,596.3	
5,624.1	5,623.3	
5,967.9	5,967.0	
6,015.4	6,014.5	
6,016.7	6,015.8	
6,018.7	6,017.8	
6,022.0	6,021.1	
6,024.0	6,024.0	
6,542.0	6,543.0	