

District I – (575) 393-6161
1625 N. French Dr., Hobbs, NM 88240
District II – (575) 748-1283
811 S. First St., Artesia, NM 88210
District III – (505) 334-6178
1000 Rio Brazos Rd., Aztec, NM 87410
District IV – (505) 476-3460
1220 S. St. Francis Dr., Santa Fe, NM 87505

State of New Mexico
Energy, Minerals and Natural Resources

OIL CONSERVATION DIVISION
1220 South St. Francis Dr.
Santa Fe, NM 87505

<p>SUNDRY NOTICES AND REPORTS ON WELLS (DO NOT USE THIS FORM FOR PROPOSALS TO DRILL OR TO DEEPEN OR PLUG BACK TO A DIFFERENT RESERVOIR. USE "APPLICATION FOR PERMIT" (FORM C-101) FOR SUCH PROPOSALS.)</p> <p>1. Type of Well: Oil Well <input type="checkbox"/> Gas Well <input type="checkbox"/> Other Salt Water Disposal</p>		<p>WELL API NO. 30-045-27340</p> <p>5. Indicate Type of Lease STATE <input checked="" type="checkbox"/> FEE <input type="checkbox"/></p> <p>6. State Oil & Gas Lease No.</p>
<p>2. Name of Operator BP America Production Company- Lower 48</p>		<p>7. Lease Name or Unit Agreement Name NORTHEAST BLANCO UNIT PUMP MESA SWD</p>
<p>3. Address of Operator 737 N Eldridge Pkwy Houston, TX 77079</p>		<p>8. Well Number 1</p>
<p>4. Well Location Unit Letter <u>N</u> : <u>990</u> feet from the <u>South</u> line and <u>1600</u> feet from the <u>West</u> line Section <u>36</u> Township <u>31N</u> Range <u>08W</u> NMPM County <u>San Juan</u></p>		<p>9. OGRID Number 000778</p>
<p>11. Elevation (Show whether DR, RKB, RT, GR, etc.) 6430'</p>		<p>10. Pool name or Wildcat SWD;MORRISON BLUFF ENTRADA</p>

12. Check Appropriate Box to Indicate Nature of Notice, Report or Other Data

<p>NOTICE OF INTENTION TO:</p> <p>PERFORM REMEDIAL WORK <input type="checkbox"/> PLUG AND ABANDON <input type="checkbox"/> TEMPORARILY ABANDON <input type="checkbox"/> CHANGE PLANS <input type="checkbox"/> PULL OR ALTER CASING <input type="checkbox"/> MULTIPLE COMPL <input type="checkbox"/> DOWNHOLE COMMINGLE <input type="checkbox"/> CLOSED-LOOP SYSTEM <input type="checkbox"/> OTHER: <input type="checkbox"/></p>		<p>SUBSEQUENT REPORT OF:</p> <p>REMEDIAL WORK <input type="checkbox"/> ALTERING CASING <input type="checkbox"/> COMMENCE DRILLING OPNS. <input type="checkbox"/> P AND A <input type="checkbox"/> CASING/CEMENT JOB <input type="checkbox"/> OTHER: <u>SWD Repair/Slickline Job</u> <input checked="" type="checkbox"/></p>	
---	--	---	--

13. Describe proposed or completed operations. (Clearly state all pertinent details, and give pertinent dates, including estimated date of starting any proposed work). SEE RULE 19.15.7.14 NMAC. For Multiple Completions: Attach wellbore diagram of proposed completion or recompletion.

Please see the attached Slickline/SWD Repair operations performed on the subject well October-November 2017.

Should you have further questions/concerns regarding this repair please contact Getulio Acosta Vasquez at Getulio.AcostaVasquez@bp.com

OIL CONS. DIV DIST. 3
JAN 2-3 2018

Spud Date: 06/07/1990 Rig Release Date:

I hereby certify that the information above is true and complete to the best of my knowledge and belief.

SIGNATURE Toya Colvin TITLE Regulatory Analyst DATE 12/04/2017

Type or print name Toya Colvin E-mail address: Toya.Colvin@bp.com PHONE: 281-892-5369

For State Use Only

APPROVED BY: Monica Trevino TITLE DATE
Conditions of Approval (if any):

10

NEBU Pump Mesa SWD 1 Slickline/SWD Repair Operations

October- November 2017

10/19/2017- TEST LUBRICATOR & BOP WITH WELL BORE PRESSURE HELD GOOD ON 5 MIN TEST-PASSED, RIH W/ 2.867" GR TAG AT 802', JAR THRU TAG 1269' POH RIH W/ 2.806" GR 8040' SLIGHT SET DOWN AT 7910' 7980' 8034'. RIH W/ 2.813" X-P PLUG FLOATING IN PLUG TO X - NIPPLE AT 8010' WLM GET DOWN TO SETTING DEPTH WORK SPANG JARS TO BREAK PINS TO ENGAGE DOGS INTO PROFILE WORKED JARS FOR 30 MIN UNABLE TO FEEL OVER PULL PRIOR TO BREAKING PIN TO RELEASE FROM PLUG POH WITH SETTING TOOL, PLUG DID RELEASE FROM SETTING TOOL, RIH WITH PRONG INSTALL SEALING ELEMENT INSIDE X PLUG, BLED TBG DOWN TO ZERO CASING BUILT UP TO 820 PSI FROM 675 PSI 5.5 HRS PRESSURE TEST TBG 500 PSI HELD GOOD 5 MIN, BRING UP TO 1540 PSI HELD GOOD 10 MIN TEST RELEASE PRESSURE, RIG UP SL RIH RETREIVED PRONG AT 8010' RIH W/ GS PULLING TOOL LATCH ONTO PLUG WORKED JARS SHEAR OFF PLUG POH WITH RETREIVEING TOOL REDRESS GS PULLING TOOL, RIH RETRIEVED PLUG SHUT WELL IN ENDING CASING PRESSURE 920.

10/26/2017- SITP 1900 SICP 420 SLICKLINE SET PLUG IN R NIPPLE AT 8103' GROUND LEVEL
2.75" RZE PLUG SET WITH C-1 RUNNING TOOL

10:50 AM BLED CASING DOWN TO ZERO SOLID FLUID
RETURNS LESS THAN 15 GALLONS RECOVERED

11:05 AM CASING AT ZERO SITP 1808

11:15 CASING ZERO SITP 1840

11:18 SHUT IN CASING SITP 1852

11:30 SICP 34 SITP 1910

11:40 SICP 36 SITP 1915

11:50 SICP 46 SITP 1933

OPEN TBG BLED TO ZERO LESS THAN 20 GALLONS
RECOVERED

12:05 SICP 16 TBG AT ZERO

12:20 SICP 34 TBG AT ZERO

12:30 SICP 43 TBG AT ZERO

10/30/2017-10/31/2017- MIRU, RELEASE TBG OFF HORNET PKR RETRIEVE 2 WAY CHECK, PRESSURE TEST PUMP & LINE 1500 PSI HELD GOOD, PUMPED 220 BBLs #10.5 BRINE, LATCH BACK ONTO PKR & RELEASE POH LAY DOWN 3.5" TBG

11/01/2017-11/02/2017- TEST 2.875" RAMS-PASSED, PU & RIH W/ 7" RBP AND PKR HANG AT 8100', SET RBP AT 8065' PKR SET AT 8025' TEST RBP DOWN TBG 1020 PSI LOST 10 PSI IN 15 MINUTES
PRESSURE TEST CASING 520 PSI LOST 20 PSI WITHIN 20 MINUTES
INSTALL 3K RECORDER TEST 30 MIN LOST 20 PSI
INSTALLED DIGITAL GAUGE TEST 500 PSI LOST 11 PSI IN 30 MINTUES, CALLED RESULTS TO OCD THEY WANT TO TEST WITH 1K RECORDER PRIOR TO PULLING TOOLS
SAFETY MEETING WITH PERSONNEL & OCD REP
CHECK BH ZERO CHECK INTERMEDIATE ZERO
500 PSI ON CHART RECORDER HELD FOR 30 MINUTES
LESS THAN 20 PSI DROP OFF FOR LAST 10 MIN FAILED TEST
RETEST TO 520 PSI MONITOR FOR 30 MINUTES DROP
OFF 1 PSI PER MIN LAST 10 MIN FAILED TEST
RELEASE PACKER AT 8025' PUMPED 30 BBLs 10.5 KWF DOWN TBG UP ANNULUS
RETEST FROM RBP 8065' TO SURFACE START AT 520 PSI
RAN FOR 38 MINUTES LAST 10 MIN ZERO GAIN OR LOSS- PASSED

11/03/2017-11/04/2017- RELEASE RBP POH & LAY DOWN 2.875" WORK STRING START BACK WITH 3.5" STRING, SET IN 3.5" HANGAR AND LOCK DOWN PRESSURE TEST PIPE RAMS LOW 400 PSI HIGH 3000 PSI BOTH HELD GOOD ON 5 MIN TEST-PASSED UNLOCK HANGAR PULLED HANGAR TO SURFACE, PU REST OF 3.5" TBG. SET PKR AT 8105', PUMP PKR FLUID PUMPED 240 BBLs PAKCER FLUIDS RATE BELOW 2 BPM NOT TO DAMAGE SEALS ON/OFF TOOL, RECOVERED 10 BBLs PACKER FLUID BACK TO RIG PIT
SHUT DOWN

11/05/2017- RUN SUBS ENGAGE ON/OFF TOOL ND BOPE NUWH TEST ADAPTOR FLANGE 2000 PSI HELD GOOD ON 5 MIN TEST

11/06/2017- OPEN CASING TO CHART RECORDER MONITOR FOR 30 MINUTES NO PRESSURE GAIN
PERFROM FINAL MIT START AT 520 PSI DROP TO 500 IN 30 MIN LAST 10 MIN STRAIGHT LINE
PERFROM BH TEST ZERO PSI STAY AT ZERO DURING MIT- PASSED

11/07/2017- SPOT IN RIG UP COIL UNIT MAKE UP BHA, PULLED TEST CONNECTOR 14K COIL CONNECTOR DUAL FLAPPER HYDRAULIC DISCONNECT 1" MT X 3/4" SUCKER ROD SUB 3/4" BOX X 5/8" ROD SPEAR STAB

INJECTOR ONTO WELLHEAD PRESSURE RAMS AND CONNECTIONS TO 2650 PSI HELD GOOD ON 10 MIN TEST BOTTOM CENTRALIZER WOULD START INTO HANGAR, TRIED NUMEROUS TIMES WOULD NOT START IN PULLED BHA BACK OUT REMOVE BOP & INJECTOR MODIFIED CENTRALIZER PUT MORE OF BEVEL END THAN THE FLAT BOTTOM STAB BOP BACK ON MASTER VALVE SHELL TEST 2600 PSI, RIH GOT PAST TBG HANGAR MADE IT 6' BELOW HANGAR START TO PUSH PRONG AGAINST PIC TBG PULLED PRONG BACK OUT, SENT CENTRALIZER BACK, SLICKLINE SERVICES TO GET OD TURN DOWN ON CENTRALIZER PRONG, MAKE UP BHA COIL CONNECTOR DUAL FLAPPER HYDRAULIC DISCONNECT 1" MT X 3/4" SUCKER ROD SUB 3/4" BOX X 5/8" ROD SPEAR STAB INJECTOR ONTO WELLHEAD PRESSURE RAMS AND CONNECTIONS TO 2650 PSI HELD GOOD ON 5 MIN, REEL IN HOLE WITH SPEAR STOP SEVERAL TIMES FOR WEIGHT CHECK TAG FIRMLY AT 8103' CIRCULATE 5 BBLs TAG HARD TAKEN 6K OVER PULL TO WORK UP HOLE, REEL OUT BHA REMOVE TOP CENTRALIZER GAUGE AND CHECK WITH X-NIPPLE GRIND DOWN MADE SURE IT WOULD PASS THRU 3.5" X-NIPPLE

11/08/2017- R/U SERVICE RIG AND START UP, RIH BHA COIL CONNECTOR DUAL FLAPPER HYDRAULIC DISCONNECT 1" MT X 3/4" SUCKER ROD SUB 3/4" BOX X 5/8" ROD SPEAR STAB INJECTOR ONTO WELLHEAD, RIH AT 79 FT TAKE FINAL READING AT 8060' 7100 LBS UP 4200 LBS DOWN WEIGHT 4500 LBS SPOOLING, RIH TAG AT 8092' PICK UP KICK PUMP IN CIRCULATING AT 2500 PSI 1 BPM, SET DOWN 2K WHILE CIRCULATING SEVERAL TIMES CLEAN OUT 2' TAGGING AT 8095', SET DOWN 2K DIDN'T SEE ANY PRESSURE INCREASE ON TUBING ANNULUS TAKE PUMP OFF LINE, POH WITH COIL 79 FT TAKE INJECTOR OFF MASTER VALVE INSPECT TOOLS NO BRASS ON PRONG, RIH W/ HELIX CLEAN OUT NOZZLE TAG AT 8098', PULL UP KICK IN PUMP AT 1.5 BBL PER MIN, MOVED UP & DOWN DIDN'T MAKE ANY HOLE BEYOND TAG DEPTH 8098', PUMPED 20 BBLs START PULLING OUT OF HOLE, CIRCULATE ALL THE WAY BACK OUT, RIG DOWN COIL UNIT BREAK DOWN TOOLS, SET BACK INJECTOR ONTO MASTER VALVE, SPOT IN R/U SL UNIT PRESSURE TEST LUBRICATOR 3000 PSI HELD GOOD ON 5 MIN TEST-PASSED, RIH WITH PRONG STOP AT 8060' PRESSURE UP ON TUBING 2100 PSI RUN DOWN TO 8103' HIT DOWN SEVERAL TIMES TO BREAK DISC WORKED JARS TO PULL AWAY FROM PLUG, POH WITH PRONG SL OPERATOR WANTED TO CUT DOWN BTM CENTRALIZER RIH WITH PRESSURE UP TO 2000 PSI STILL UNABLE TO BREAK DISC, CALLED SL MANAGER HE MENTIONED THAT WE WERE NOT CENTERED ENOUGH TO HIT THE DISC, POH WITH PRONG

11/09/2017- BACK UP COIL UNIT TO WELL HEAD RIG UP, CHANGE OUT COIL CONNECTOR PULL TEST 10 K MAKE UP BHA STAB INJECTOR ONTO WELL HEAD, PRESSURE TEST BLIND 3000 PSI HELD GOOD TEST RAMS 3000 PSI TEST STRIPPER 500 PSI SHELL TEST CONNECTION 3000 PSI HELD GOOD ON 5 MIN TEST—ALL PASSED, RIH W/ PULLING STOP AT 8058', PRESSURE UP WELL BORE 2800 PSI DROP DOWN AND TAG AT 8094' WORK COIL DOWN TO RZE WORK DOWN COIL NUMEROUS TIMES TO LATCH PLUG, PULL UP HOLE NO CHANGE IN PRESSURE, POH WITH COIL, CHANGE OUT BHA INSTALLED SPRING CENTRALIZER ABOVE JDC PULLING TOOL, RIH TO 8060' PRESSURE UP WELL HEAD TO 2800 PSI DROP DOWN TAG AT 8094' SET DOWN NUMEROUS TIMES TO ENGAGE PLUG, DROP DOWN ANOTHER 7' DID THE SAME THING SET DOWN STRING WEIGHT 7K PULLED UP TOOK 13K TO BREAK FREE, POH WITH PULLING TOOL, TAKE OFF PULLING TOOL AT SURFACE, BLOW COIL CLEAR WITH N2 REMOVED INJECTOR OFF WELL HEAD, SPOT IN RIG UP PHX SL SERVICES, MAKE UP 2.45" OD IMPRESSION BLOCK, RIH AND SET DOWN AT 8114' POH WITH BLOCK AND INSPECT OD ON BLOCK SHOWING HITTING ON TOP OF RZE PLUG IN R-NIPPLE, RIH W/ PRONG TO BREAK DISC STOP AT 8090' PRESSURE UP LUBRICATOR TO 2300 PSI, BODY LUBE FITTING ON MASTR VALVE STARTING LEAKING FLUID RELEASE PRESSURE IN ORDER TO RESEAT, CHECK VALVE PRESSURE UP TO 500 PSI STILL LEAKING RELEASE PSI POH WITH PRONG

11/10/2017- RIG UP SL RIH WITH PRONG CENTRALIZER 2.71" OD TAG AT 8103', HIT DOWN HARD SEVERAL TIMES UNABLE TO PASS TIGHT SPOT, POH WITH TOOLS RIH WITH 2.75" GR TAG AT 8103' UNABLE TO PASS THRU, POH WITH TOOLS, DECISION MADE TO RUN STRING MILL, SHUT DOWN

11/11/2017- INSTALL STRING MILL 2.77" & MOTOR FUNCTION TEST WORKING GOOD AT SURFACE STAB INJECTOR ONTO WELL HEAD PRESSURE TEST 1000 PSI HELD GOOD ON 5 MIN TEST-PASSED, REEL IN COIL STRING MADE SEVERAL STOPS FOR PULL CHECK TAG AT 8092', KICK IN PUMP 8/10 BPM PRESSURE AT 3560 START MILLING LIGHT TAG PRESSURE WOULD COME UP AND STALL OUT MOTOR WORK UP AND DOWN, AFTER 2 HOURS PROGRESS WAS STILL THE SAME BARELY TOUCHING TIGHT SPOT MOTOR WOULD STALL OUT, TAKE PUMP OFF LINE POH WITH MILL, INSTALL CONCAVE MILL 2.77" & MOTOR FUNCTION TEST WORKING GOOD AT SURFACE, STAB INJECTOR ONTO WELL HEAD PRESSURE TEST 1200 PSI HELD GOOD ON 5 MIN TEST-PASSED, REEL IN COIL STRING, MADE SEVERAL STOPS FOR PULL CHECK TAG AT 8092' KICK IN PUMP 1 BPM PRESSURE AT 2880 START MILLING LIGHT TAG PRESSURE WOULD COME UP AND STALL OUT, MOTOR WORK UP AND DOWN AFTER 2 HOURS PROGRESS WAS STILL THE SAME BARELY TOUCHING TIGHT SPOT MOTOR WOULD STALL OUT, TAKE PUMP OFF LINE POH WITH MILL, REMOVE INJECTOR BREAK DOWN TOOLS, SHUT WELL IN REVIEW PLANS FOR MONDAY

11/13/2017- REQUESTED AND RECEIVED NMOCD APPROVAL TO CHANGE PROCEDURE, NIPPLE DOWN WELL HEAD, NIPPLE UP BOPE & RIG FLOOR SHELL TEST 2000 PSI HELD GOOD ON 5 MIN TEST-PASSED, UNSET HORNET PACKER, POH WITH INJECTION STRING LAY DOWN PKR AND 2 JOINTS BELOW ALONG WITH 6' STABILIZER SUB GAUGE BHA 2.77" DRIFT PIPE AND SUBS 2.867", WL RE ENTRY GUIDE HAD MARKINGS OF STRING MILL (EOT LANDED TOO CLOSE TO PERMANENT PACKER) TO RETRIEVE PLUG SET IN R-NIPPLE SHUT WELL IN

**11/14/2017-11/15/2017- RIH WITH INJECTION STRING TOP TO BOTTOM TUBING HANGAR, LAND 3.5" J-55 9.3#
TUBING AT 8167':**

1 JT 3.5" TBG

3 SUBS 10' 8' 8"

139 JTS REG COUPLINGS 3.5" TBG

113 JTS SLIM COUPLINGS 3.5" TBG

9 CHROME X-NIPPLE 2.813L 10 ON/OFF

TOOL

9 CHROME X-NIPPLE 2.813"

7" 3.5" HORNET PACKER (600-350)

9 CHROME X-NIPPLE 2.813"

2 JTS REG COUPLINGS 3.5" TBG

3.5" CENTRALIZER SUB 2' (6 1/8" OD)

WLRG

PACKER TOP AT 8031.9' ELEMENT AT 8034'

BTM AT 8039' 35K COMPRESSION

STRING WEIGHT 68K

NIPPLE DOWN RIG FLOOR AND BOPE

NIPPLE UP WELL HEAD TEST ADAPTOR FLANGE 2000 PSI HELD GOOD-PASSED

**PRESSURE TEST CASING SEVERAL TIMES TO 500 PSI LOST 9 PSI OVER 15 MIN TIME PERIOD, SMALL AMOUNT
OF TRAP AIR STILL IN CASING VENT TO ATMOSPHERE, SHUT WELL IN**

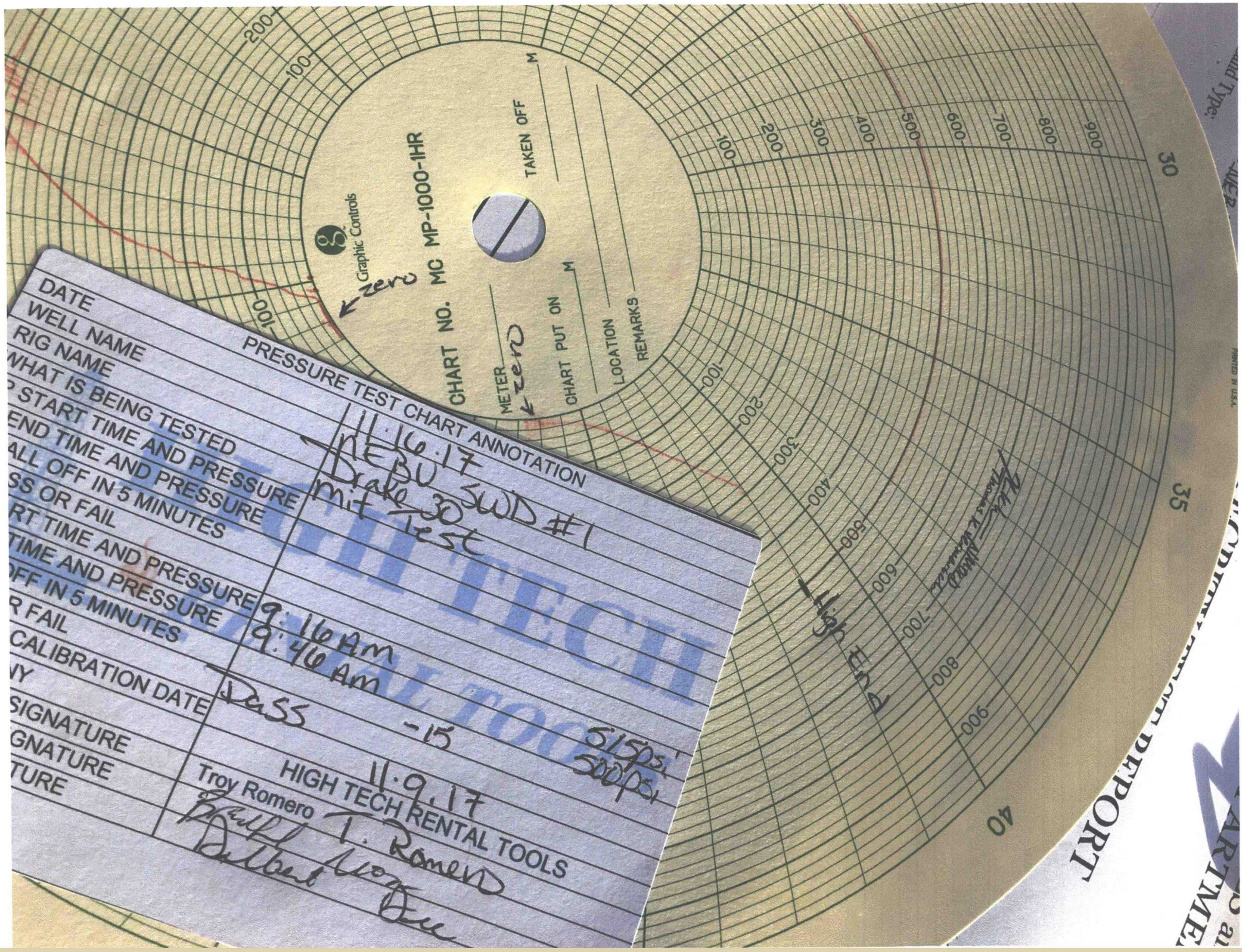
11/16/2017- MIT WITH STATE REP INSTALL RECORDER MONITOR CASING FOR 30 MIN ZERO PSI

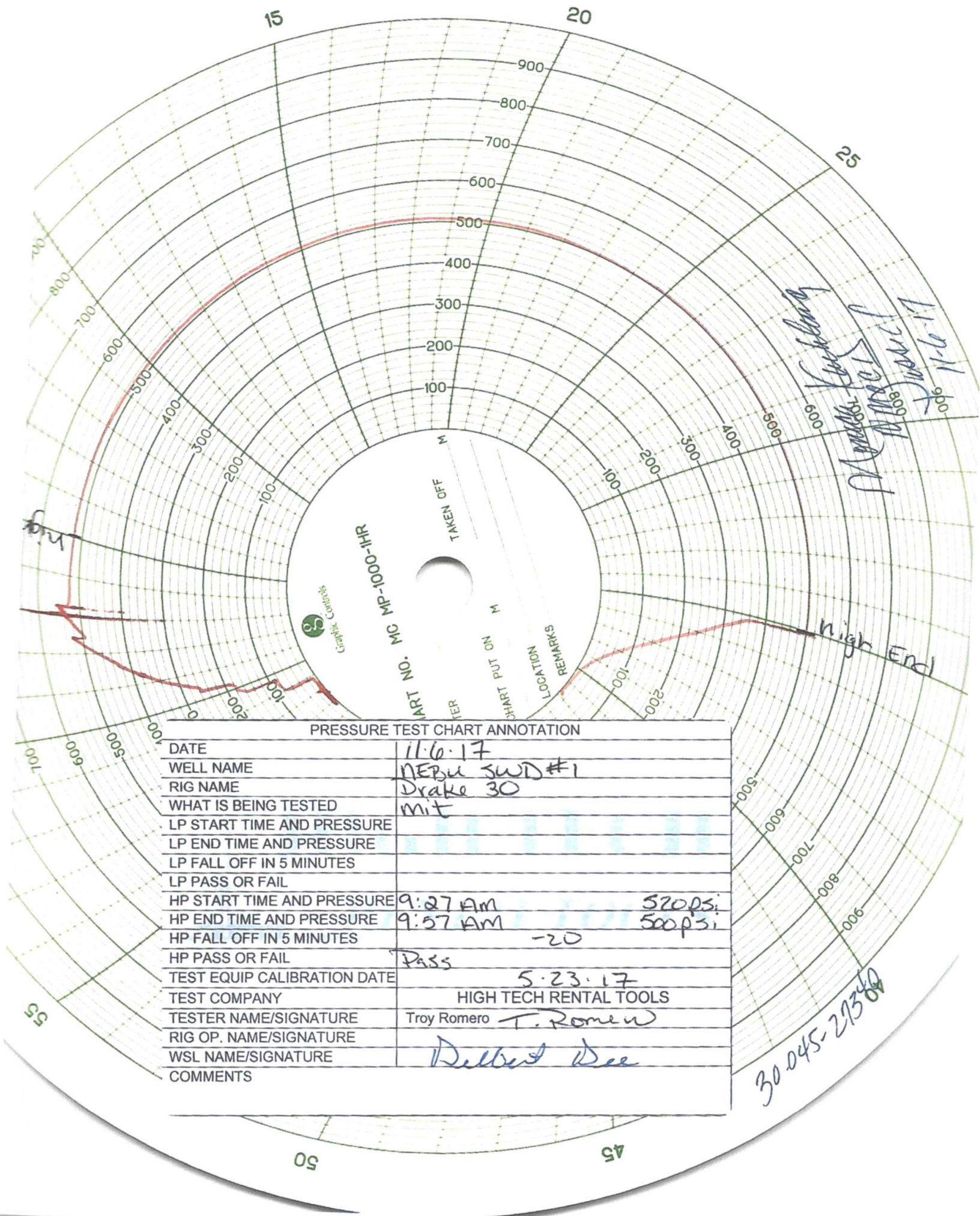
PRESSURE UP TO 515 PSI DROP 15 PSI AT END OF 50 MIN TEST

LAST 10 MIN FINALLY DREW STRAIGHT LINE ZERO DECREASE OR INCREASE

11/27/2017- 11/30/2017- TAG PLUG @ 8121.5', CUT TUBING AT 8121'

MONICA FROM NMOC D GAVE APPROVAL TO INJECT 12/01/2017





PRESSURE TEST CHART ANNOTATION

DATE	11-6-17	
WELL NAME	NEBU SWD #1	
RIG NAME	Drake 30	
WHAT IS BEING TESTED	mit	
LP START TIME AND PRESSURE		
LP END TIME AND PRESSURE		
LP FALL OFF IN 5 MINUTES		
LP PASS OR FAIL		
HP START TIME AND PRESSURE	9:27 AM	520 psi
HP END TIME AND PRESSURE	9:57 AM	500 psi
HP FALL OFF IN 5 MINUTES	-20	
HP PASS OR FAIL	Pass	
TEST EQUIP CALIBRATION DATE	5-23-17	
TEST COMPANY	HIGH TECH RENTAL TOOLS	
TESTER NAME/SIGNATURE	Troy Romero T. Romero	
RIG OP. NAME/SIGNATURE		
WSL NAME/SIGNATURE	Dulbert Dee	
COMMENTS		

30045-27340