

Submit 1<sup>st</sup> Copy To Appropriate District  
Office  
District I – (575) 393-6161  
1625 N. French Dr., Hobbs, NM 88240  
District II – (575) 748-1283  
811 S. First St., Artesia, NM 88210  
District III – (505) 334-6178  
1000 Rio Brazos Rd., Aztec, NM 87410  
District IV – (505) 476-3460  
1220 S. St. Francis Dr., Santa Fe, NM  
87505

State of New Mexico  
Energy, Minerals and Natural Resources

Form C-103  
Revised July 18, 2013

OIL CONSERVATION DIVISION  
1220 South St. Francis Dr.  
Santa Fe, NM 87505

WELL API NO. 30-039-29273
5. Indicate Type of Lease STATE <input type="checkbox"/> FEE <input checked="" type="checkbox"/>
6. State Oil & Gas Lease No.
7. Lease Name or Unit Agreement Name San Juan 29-5 Unit
8. Well Number 62F
9. OGRID Number 372171
10. Pool name or Wildcat Gobernador PC/Blanco MV/Basin DK

SUNDRY NOTICES AND REPORTS ON WELLS  
(DO NOT USE THIS FORM FOR PROPOSALS TO DRILL OR TO DEEPEN OR PLUG BACK TO A  
DIFFERENT RESERVOIR. USE "APPLICATION FOR PERMIT" (FORM C-101) FOR SUCH  
PROPOSALS.)

1. Type of Well: Oil Well ☐ Gas Well ☒ Other

2. Name of Operator  
HILCORP ENERGY COMPANY

3. Address of Operator  
PO BOX 4700, FARMINGTON NM 87499

4. Well Location

Unit Letter K 1755 feet from the South line and 2475 feet from the West line  
Section 7 Township 29N Range 5W NMPM Rio Arriba County

11. Elevation (Show whether DR, RKB, RT, GR, etc.)  
6498' GR

12. Check Appropriate Box to Indicate Nature of Notice, Report or Other Data

NOTICE OF INTENTION TO:

PERFORM REMEDIAL WORK ☐ PLUG AND ABANDON ☐  
TEMPORARILY ABANDON ☐ CHANGE PLANS ☐  
PULL OR ALTER CASING ☐ MULTIPLE COMPL ☐  
DOWNHOLE COMMINGLE ☐  
CLOSED-LOOP SYSTEM ☐  
OTHER: ☒ Recomplete

SUBSEQUENT REPORT OF:

REMEDIAL WORK ☐ ALTERING CASING ☐  
COMMENCE DRILLING OPNS. ☐ P AND A ☐  
CASING/CEMENT JOB ☐  
OTHER: ☐

13. Describe proposed or completed operations. (Clearly state all pertinent details, and give pertinent dates, including estimated date of starting any proposed work). SEE RULE 19.15.7.14 NMAC. For Multiple Completions: Attach wellbore diagram of proposed completion or recompletion.

Hilcorp Energy Company plans to recomplete the subject well in the Pictured Cliffs formation and downhole commingle with the existing Mesaverde and Dakota. Attached is the PC C102, recompleting procedure & wellbore schematic. The DHC application will be submitted and approved before the work proceeds.

OIL CONS. DIV DIST. 3

COA: DHC needs to be approved prior to commingling the PC with the MV+DK.

FEB 07 2018

Spud Date:

Rig Release Date:

I hereby certify that the information above is true and complete to the best of my knowledge and belief.

SIGNATURE Tammy Jones TITLE Operations / Regulatory Technician – Sr. DATE 2/7/2018

Type or print name Tammy Jones E-mail address: tajones@hilcorp.com PHONE: 505-324-5185

For State Use Only

APPROVED BY: Branch Roll TITLE Deputy Oil & Gas Inspector, DATE 2/7/18  
District #3

Conditions of Approval (if any):

AV

4

**District I**

1625 N. French Dr., Hobbs, NM 88240  
Phone:(575) 393-6161 Fax:(575) 393-0720

**District II**

811 S. First St., Artesia, NM 88210  
Phone:(575) 748-1283 Fax:(575) 748-9720

**District III**

1000 Rio Brazos Rd., Aztec, NM 87410  
Phone:(505) 334-6178 Fax:(505) 334-6170

**District IV**

1220 S. St Francis Dr., Santa Fe, NM 87505  
Phone:(505) 476-3470 Fax:(505) 476-3462

**State of New Mexico**  
**Energy, Minerals and Natural**  
**Resources**  
**Oil Conservation Division**  
**1220 S. St Francis Dr.**  
**Santa Fe, NM 87505**

Form C-102

August 1, 2011

Permit 248061

**WELL LOCATION AND ACREAGE DEDICATION PLAT**

1. API Number 30-039-29273	2. Pool Code 77440	3. Pool Name GOVERNADOR PICTURED CLIFFS (GAS)
4. Property Code 318837	5. Property Name SAN JUAN 29 5 UNIT	6. Well No. 062F
7. OGRID No. 372171	8. Operator Name HILCORP ENERGY COMPANY	9. Elevation 6498

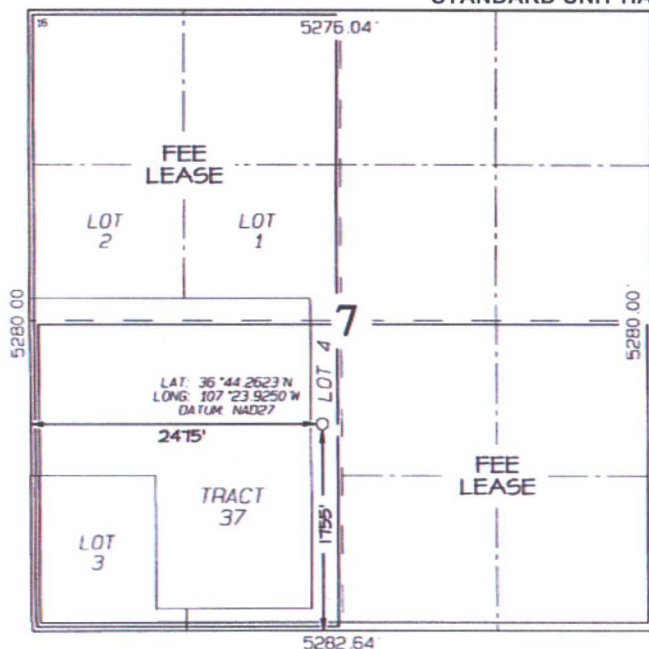
**10. Surface Location**

UL - Lot K	Section 7	Township 29N	Range 05W	Lot Idn	Feet From 1755	N/S Line S	Feet From 2475	E/W Line W	County RIO ARRIBA
---------------	--------------	-----------------	--------------	---------	-------------------	---------------	-------------------	---------------	----------------------

**11. Bottom Hole Location If Different From Surface**

UL - Lot	Section	Township	Range	Lot Idn	Feet From	N/S Line	Feet From	E/W Line	County
12. Dedicated Acres 320.00	W/2			13. Joint or Infill		14. Consolidation Code		15. Order No.	

**NO ALLOWABLE WILL BE ASSIGNED TO THIS COMPLETION UNTIL ALL INTERESTS HAVE BEEN CONSOLIDATED OR A NON-STANDARD UNIT HAS BEEN APPROVED BY THE DIVISION**

**OPERATOR CERTIFICATION**

*I hereby certify that the information contained herein is true and complete to the best of my knowledge and belief, and that this organization either owns a working interest or unleased mineral interest in the land including the proposed bottom hole location(s) or has a right to drill this well at this location pursuant to a contract with an owner of such a mineral or working interest, or to a voluntary pooling agreement or a compulsory pooling order heretofore entered by the division.*

E-Signed By: *Tammy Jones*  
Title: Operations/Regulatory Technician - Sr.  
Date: 2/6/2018

**SURVEYOR CERTIFICATION**

*I hereby certify that the well location shown on this plat was plotted from field notes of actual surveys made by me or under my supervision, and that the same is true and correct to the best of my belief.*

Surveyed By: JASON C. EDWARDS  
Date of Survey: 8/9/2004  
Certificate Number: 15269



HILCORP ENERGY COMPANY  
SAN JUAN 29-5 UNIT 62F  
PICTURED CLIFFS RECOMPLETION SUNDRY

JOB PROCEDURES

1. MIRU service rig and associated equipment; test BOP.
2. TOOH with 2 3/8" tubing set at XXXX'.
3. Set a 4-1/2" cast iron bridge plug at +/- 5,250' to isolate the DK/Mesa Verde. Note: TOC at 2,730' by CBL.
4. Load the hole and pressure test the casing to frac pressure.
5. N/D BOP, N/U frac stack and test frac stack to frac pressure.
6. Perforate and frac the Pictured Cliffs in a single stage (Top Perforation @ 3,434'; Bottom Perforation @ 3,497').
7. Isolate frac stage with a composite bridge plug.
8. Nipple down frac stack, nipple up BOP and test.
9. TIH with a mill and drill out top Pictured Cliffs isolation plug.
10. Clean out to DK/Mesa Verde isolation plug and, when water and sand rates are acceptable, flow test the Pictured Cliffs.
11. Drill out DK/Mesa Verde isolation plug and cleanout to PBTD of 7,935'. TOOH.
12. TIH and land production tubing. Get a commingled DK/Mesa Verde/Pictured Cliffs flow rate.





HILCORP ENERGY COMPANY  
SAN JUAN 29-5 UNIT 62F  
PICTURED CLIFFS RECOMPLETION SUNDRY

SAN JUAN 29-5 UNIT 62F - CURRENT WELLBORE SCHEMATIC

