

frmWellFilterSub																				
API WELL #	Well Name	Well #	Operator Name	Type	Stat	County	Surf_Owner	UL	Sec	Twp	N/S	Rng	W/E	Feet	NS	Ft	EW	Last Insp	Order_No	StDist
30-045-24735-00-00	GALLEGOS CANYON UNIT	328	BP AMERICA PRODUCTION COMPANY	S	A	San Juan	N	N	33	29	N	12	W	1070	S	1520	W	9/25/2017	SWD-236	03

Packer test on the Gallegos Canyon Unit #328

At this time the test will be ran every 5 years

Bradenhead test performed prior to shut in for stabilization on Friday September 22, 2017

Attempted test on Monday September 25, 2017. Pump went down due to filters being clogged from water hauler placing 80 barrels water in back water tank which stirred up sediment on bottom of tank

Wellbore schematic attached (received from Adam Smouse 9-26-2017)

Fruitland Sand Perfs for production 1033-1052

Packer set at 2805'

MV perfs for injection are 2852' – 3797'

Three chart recorders used

One 1000 lb spring for production High Tech equipment calibrated 6-15-2017

One 2000 lb spring for injection High Tech equipment calibrated 3-10-2017

One 1500 lb spring owned by bp calibrated 7-2017(Adam getting infor)

Official test started with injection on September 26, 2017 –

11.74 feet water in water tank to start injection and shut off at 5 feet.

One hour test ran with Navajo EPA – Jean Bia - casing went from 120 to 130 in 1 hour

Injection went from 540 to 820 in 1 hour

Once NEPA test finished charts were changed and clocks were changed to 12 hours

Injection ran for 5 + hours

Casing held at 120 during test on 1500 lb chart

122 on 1000 lb chart

Injection rose from 820 at end of 1 hour test to 882+ 5.5+ hours later on 2000 lb chart

880 on 1500 lb chart

Injection went down at 2:50 due to lack of water

Will stabilize until 10 a.m. on Thursday, September 28, 2017.

Thursday, September 28, 2017

On site:

BP/Adam Smouse, NEPA/Jean Bia, NMOCD/Monica Kuehling

Second half of two part packer leakage test -production side

Production started at 10:13 a.m.

Line pressure 81 – started at 0.0 flow

Producing at 200+ mcf per day

Pressures at 11:00 a.m. are as follows:

1000 lb spring - production chart 105 psi

2000 lb spring - injection chart 580

1500 lb combination chart production 100/injection 580

A packer leakage form has been started with Flow Test 1 for injection side and will continue through Flow Test 2 - 7- day production test.

Packer test ended at 10 a.m. on October 5, 2017. Production side setting at 20 psi injection side 560 psi. Injection did not move while production side was producing. Kill check was performed and worked.

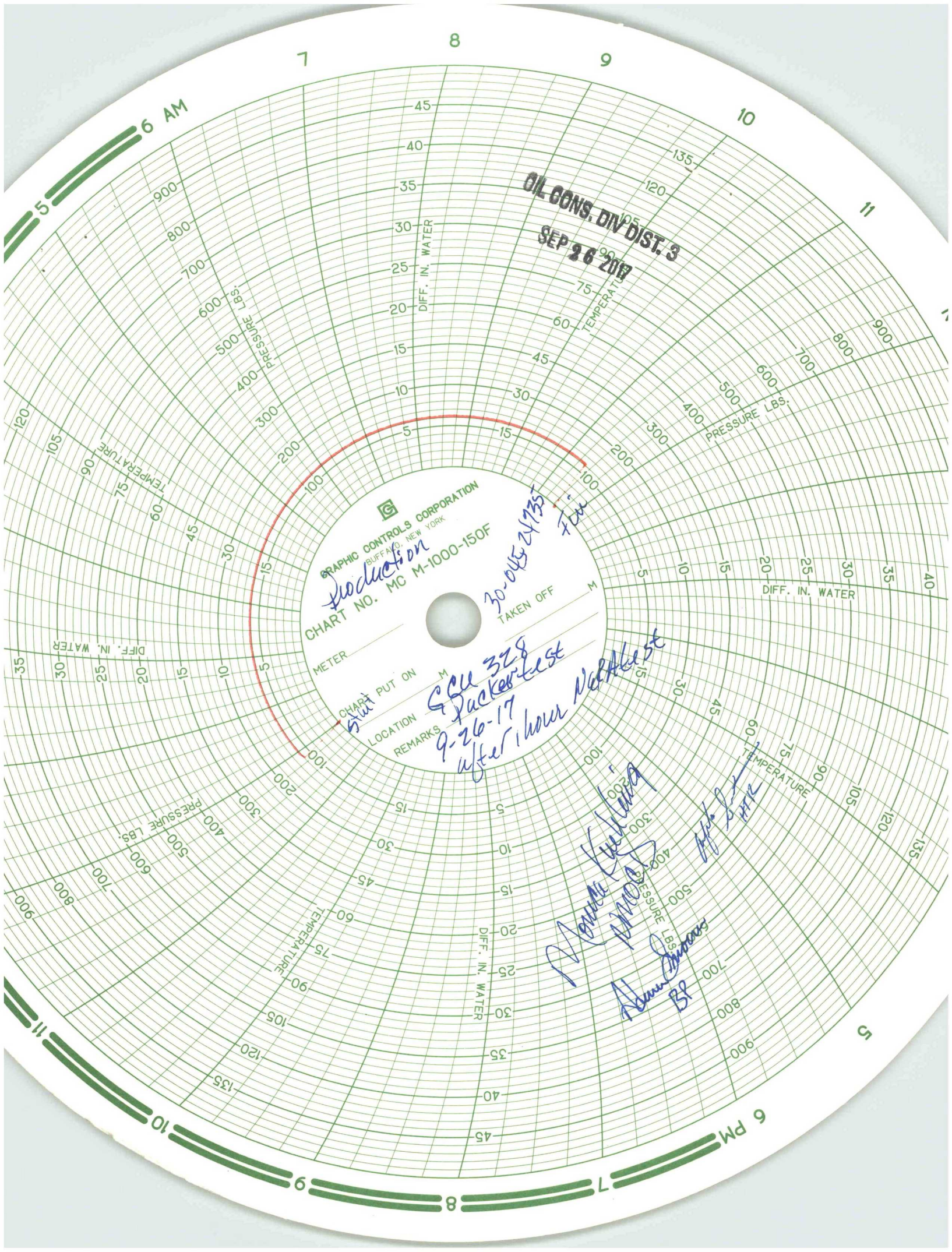
Well will go back to injection.

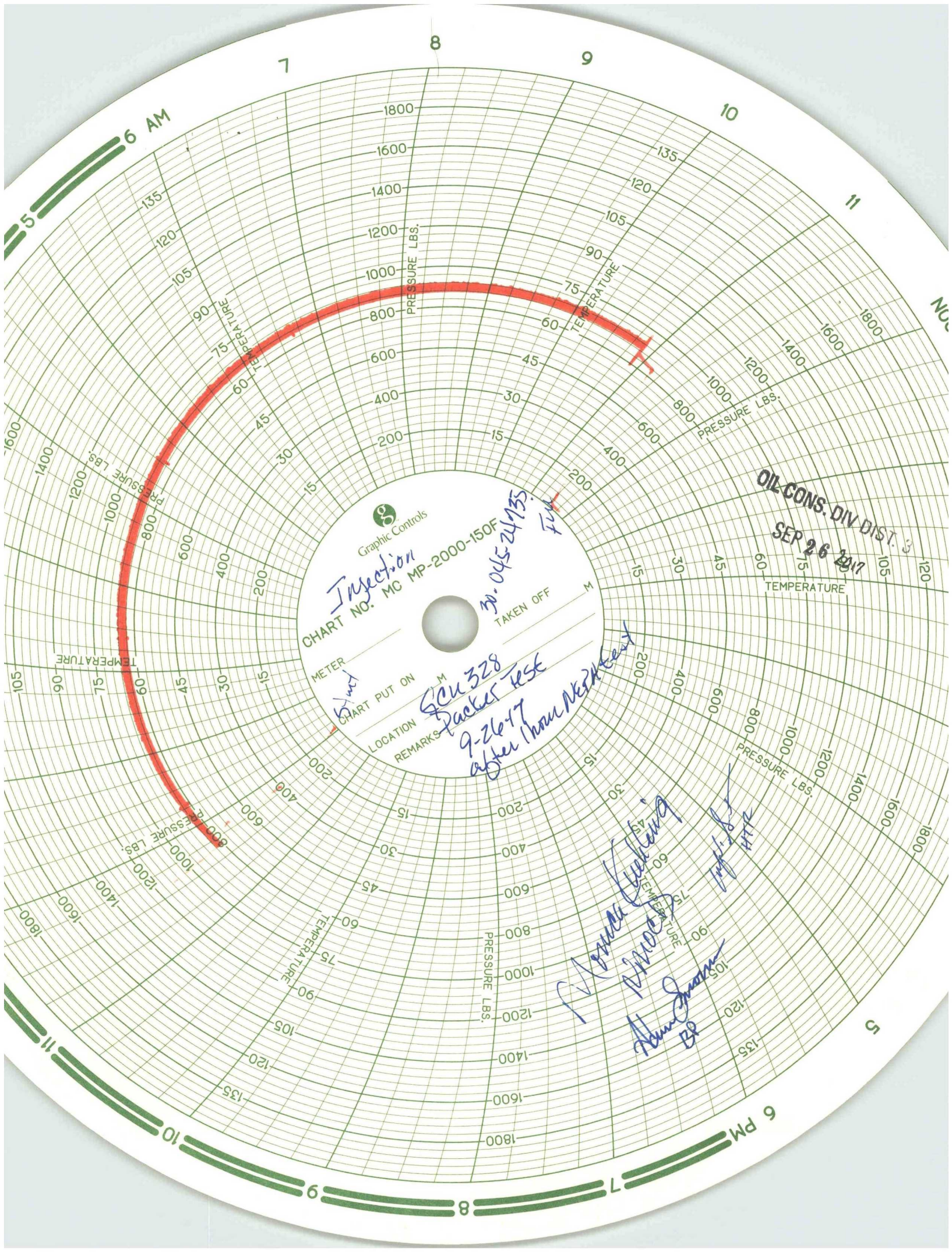
BP has decided to continue producing production side for a while.

Monica Kuehling

Deputy Inspector

District III, Aztec New Mexico



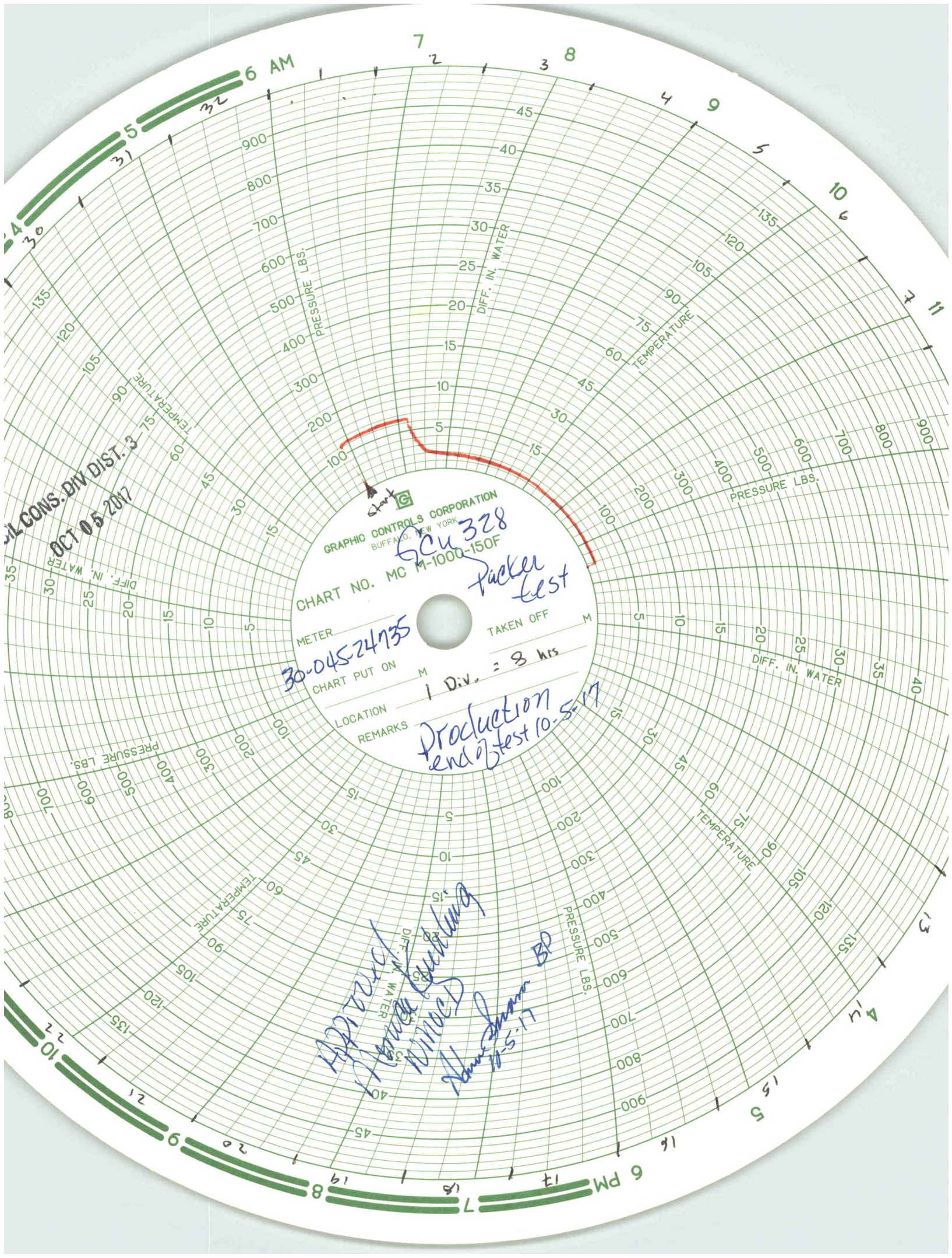


Graphic Controls
CHART NO. MC MP-2000-150F
Injection
METER
CHART PUT ON
LOCATION
REMARKS
TAKEN OFF
MP. 04524135
Full

SCU 328
Packer test
9-26-17
after 1 hour N2H4 test

OIL CONS. DIV. DIST. 3
SEP 26 2017

James Gilling
M. 04524135
H. 04524135
BP



CONS. DIV DIST. 3
OCT 05 2017

GRAPHIC CONTROLS CORPORATION
BUFFALO, NEW YORK

CHART NO. MC M-1000-150F
GCU 328
Packer Test

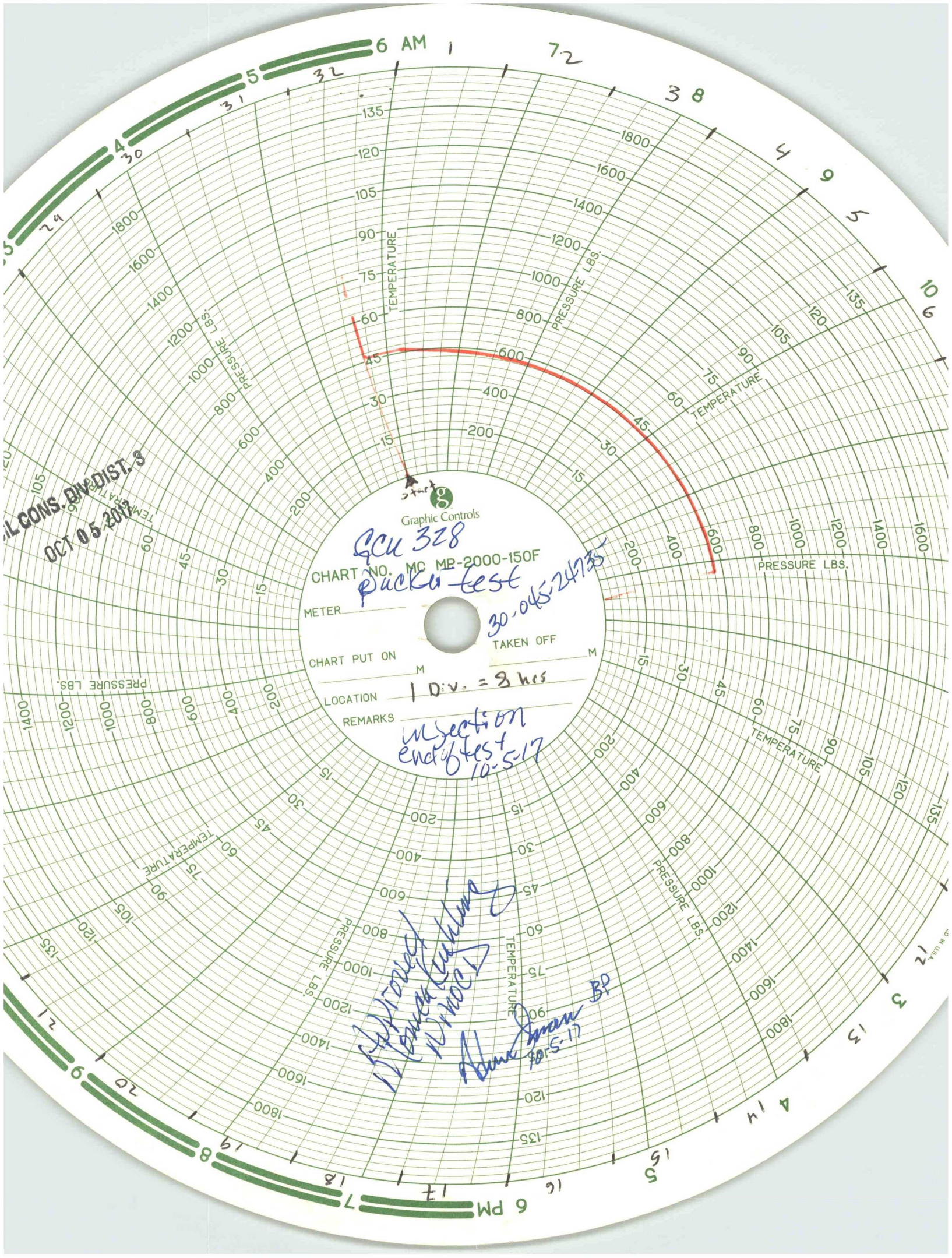
METER
30-04524735
CHART PUT ON

TAKEN OFF

LOCATION
REMARKS

1 Div. = 8 hrs
Production
end of test 10-5-17

Approved
17-5-17
BP



AL CONS. DIV. DIST. 3
OCT 05 2017

Graphic Controls
GCU 328
pick-a-test
30-oct-5-24735
CHART NO. MC MP-2000-150F
METER
CHART PUT ON
TAKEN OFF
LOCATION
REMARKS
1 Div. = 8 hrs
in section
end of test
10-5-17

Applied Tech Center
10-5-17
Abner Juan BP
10-5-17