

District I
1625 N. French Drive, Hobbs, NM 88240
Phone: (575) 393-6161 Fax: (575) 393-0720

District II
811 S. First Street, Artesia, NM 88210
Phone: (575) 748-1283 Fax: (575) 748-9720

District III
1000 Rio Brazos Road, Aztec, NM 87410
Phone: (505) 334-6178 Fax: (505) 334-6170

District IV
1220 S. St. Francis Drive, Santa Fe, NM 87505
Phone: (505) 476-3460 Fax: (505) 476-3462

State of New Mexico
Energy, Minerals & Natural Resources Department

Form C-102
Revised August 1, 2011

Submit one copy to
Appropriate District Office

OIL CONSERVATION DIVISION

1220 South St. Francis Drive
Santa Fe, NM 87505

OIL CONS. DIV DIST
AMENDED REPORT
OCT 26 2017
As Drilled

WELL LOCATION AND ACREAGE DEDICATION PLAT

*API Number 30-045-35816		*Pool Code 98157	*Pool Name LYBROOK MANCOS W
*Property Code 315250	*Property Name W LYBROOK UNIT		*Well Number 755H
*GRID No. 120782	*Operator Name WPX ENERGY PRODUCTION, LLC		*Elevation 6719'

¹⁰ Surface Location

UL or lot no.	Section	Township	Range	Lot Idn	Feet from the	North/South line	Feet from the	East/West line	County
I	14	23N	9W		1867	SOUTH	674	EAST	SAN JUAN

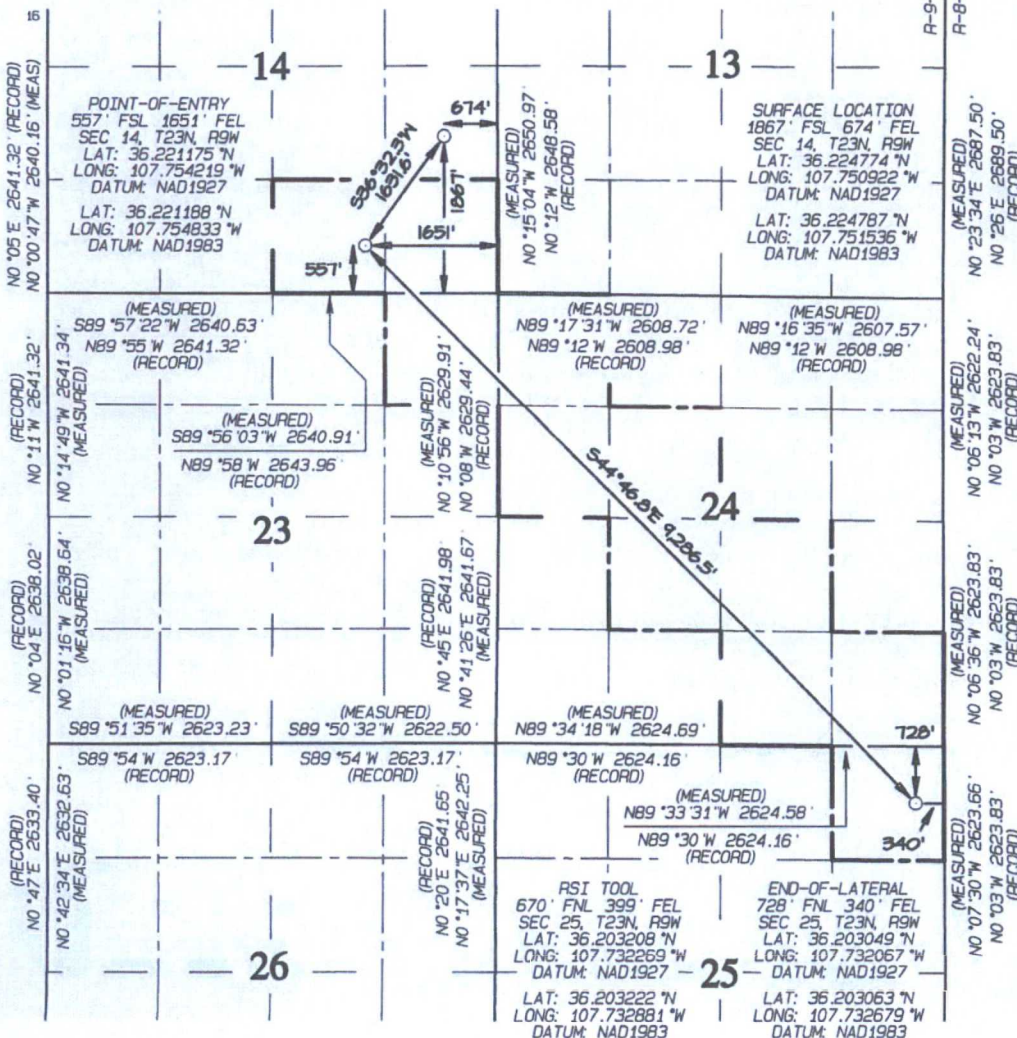
¹¹ Bottom Hole Location If Different From Surface

UL or lot no.	Section	Township	Range	Lot Idn	Feet from the	North/South line	Feet from the	East/West line	County
A	25	23N	9W		728	NORTH	340	EAST	SAN JUAN

¹² Dedicated Acres 440.00	S/2 SE/4 - Section 14 NE/4 NE/4 - Section 23 W/2 NW/4, SE/4 NW/4, NE/4 SW/4 W/2 SE/4, SE/4 SE/4 - Section 24 NE/4 NE/4 - Section 25	¹³ Joint or Infill	¹⁴ Consolidation Code	¹⁵ Order No. R-14051 - 12,807.24 Acres
---	---	-------------------------------	----------------------------------	--

CONFIDENTIAL

NO ALLOWABLE WILL BE ASSIGNED
TO THIS COMPLETION UNTIL ALL
INTERESTS HAVE BEEN CONSOLIDATED
OR A NON-STANDARD UNIT HAS
BEEN APPROVED BY THE DIVISION



¹⁷ OPERATOR CERTIFICATION

I hereby certify that the information contained herein is true and complete to the best of my knowledge and belief, and that this organization either owns a working interest or unleased mineral interest in the land including the proposed bottom-hole location or has a right to drill this well at this location pursuant to a contract with an owner of such a mineral or working interest, or to a voluntary pooling agreement or a compulsory pooling order heretofore entered by the division.

Signature: *Lacey Granillo* Date: 10/25/17
Printed Name: Lacey granillo
E-mail Address: lacey.granillo@wpxenergy.com

¹⁸ SURVEYOR CERTIFICATION

I hereby certify that the well location shown on this plat was plotted from field notes of actual surveys made by me or under my supervision, and that the same is true and correct to the best of my belief.

Date Revised: SEPTEMBER 27, 2017
Survey Date: SEPTEMBER 16, 2015

Signature and Seal of Professional Surveyor



JASON C. EDWARDS
Certificate Number 15269

40

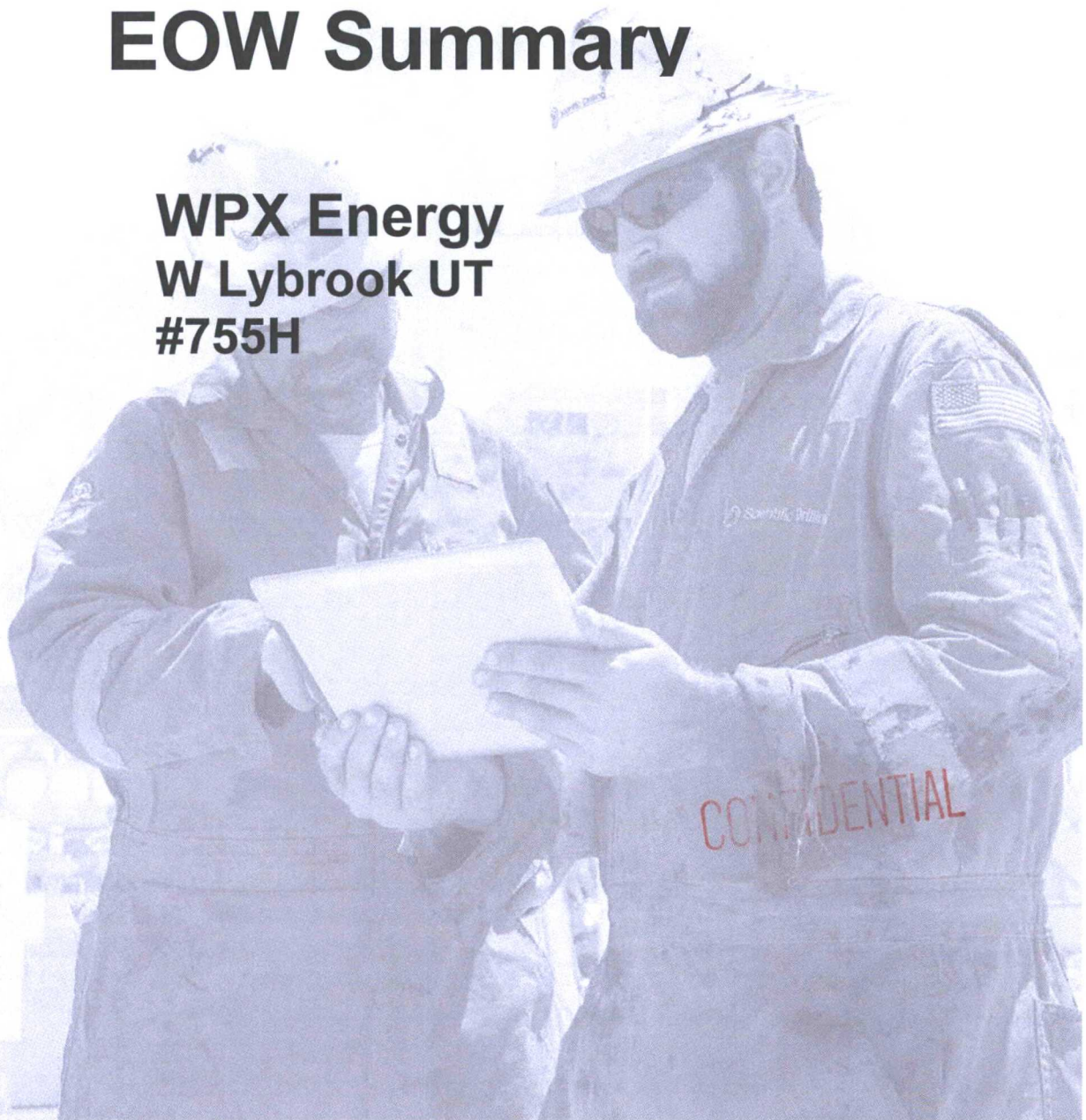
AV

10



EOW Summary

**WPX Energy
W Lybrook UT
#755H**



CONFIDENTIAL

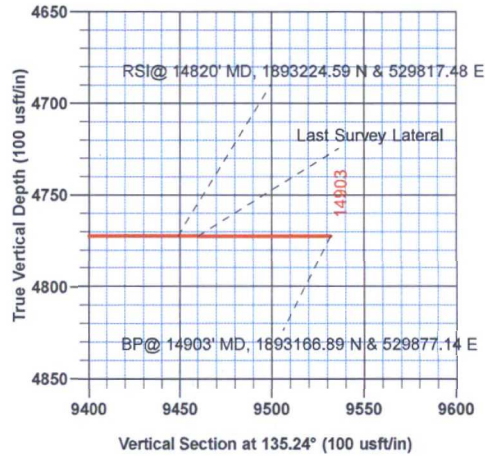
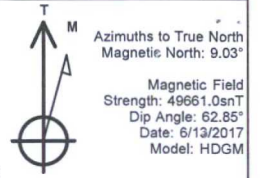
W Lybrook UT 755H
T23N R9W
Northing: 1901069.64
Easting: 524307.45
Actual

SL 6719 + KB 21 = @ 6740.00usft (Cyclone 32)
 GL @ 6719.00

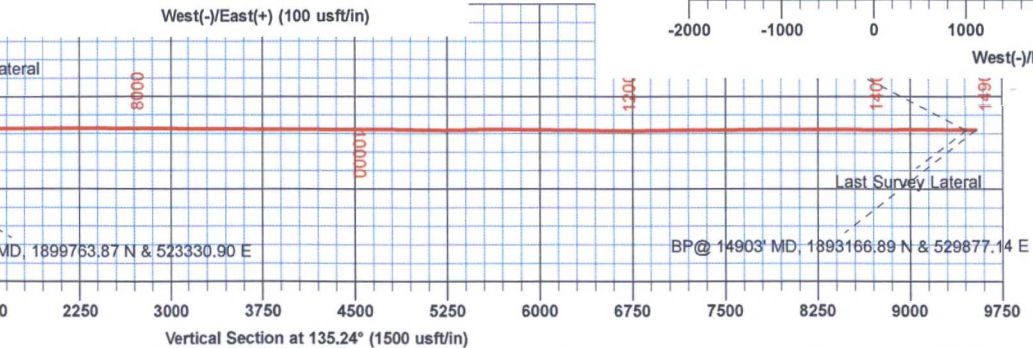
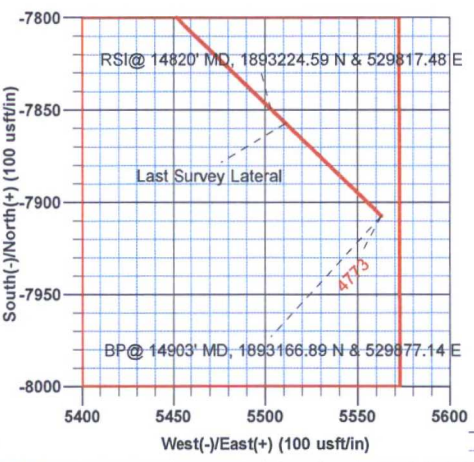
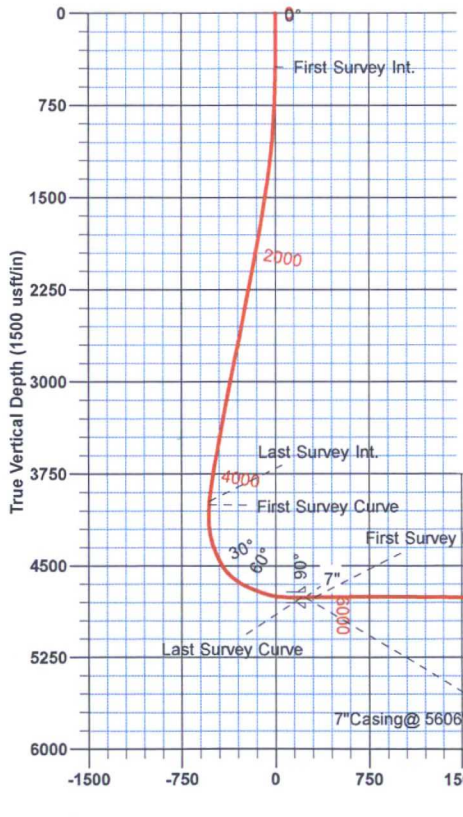
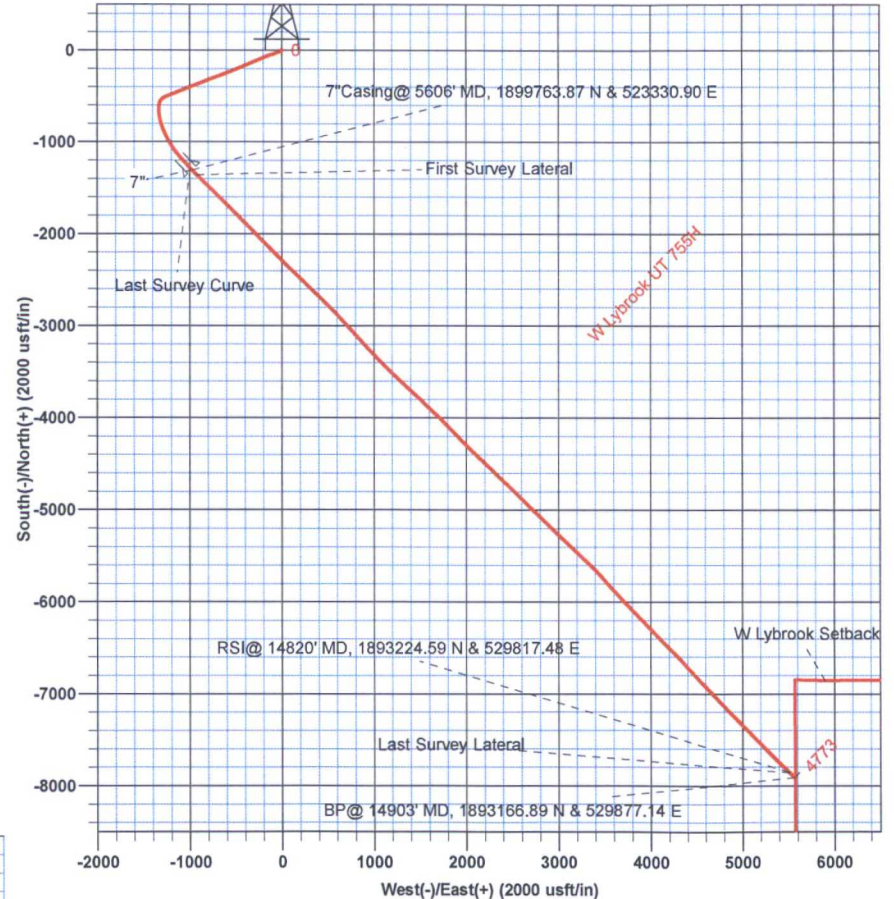


WELL DETAILS		W Lybrook UT 755H			
		Ground Level: 6719.00			
+N/-S	+E/-W	Northing	Easting	Latitude	Longitude
0.00	0.00	1901069.64	524307.45	36.224774	-107.750922

TVD	MD	ANNOTATIONS
439.93	440.00	Annotation
3971.26	4255.00	First Survey Int.
4001.84	4287.00	Last Survey Int.
4759.37	5578.00	Last Survey Curve
4759.14	5606.00	7" Casing @ 5606' MD, 1899763.87 N & 523330.90 E
4758.66	5680.00	First Survey Lateral
4772.53	14820.00	RSI @ 14820' MD, 1893224.59 N & 529817.48 E
4772.54	14831.00	Last Survey Lateral
4772.59	14903.00	BP @ 14903' MD, 1893166.89 N & 529877.14 E



0.05



Bailey Fellows
 8:20, September 22 2017
 Scientific Drilling
 325 S. Faudree Rd.
 Odessa, TX 79765

WPX Energy

T23N R9W
W Lybrook UT 716 Pad
W Lybrook UT 755H
API: 30-045-35816
Wellbore #1

Design: Actual

Survey Report - Geographic

22 September, 2017



www.scientificdrilling.com



Scientific Drilling Int.
Survey Report - Geographic

Company:	WPX Energy	Local Co-ordinate Reference:	Well W Lybrook UT 755H
Project:	T23N R9W	TVD Reference:	GL 6719 + KB 21 = @ 6740.00usft (Cyclone 32)
Site:	W Lybrook UT 716 Pad	MD Reference:	GL 6719 + KB 21 = @ 6740.00usft (Cyclone 32)
Well:	W Lybrook UT 755H	North Reference:	True
Wellbore:	Wellbore #1	Survey Calculation Method:	Minimum Curvature
Design:	Actual	Database:	Grand Junction District

Project	T23N R9W		
Map System:	US State Plane 1927 (Exact solution)	System Datum:	Mean Sea Level
Geo Datum:	NAD 1927 (NADCON CONUS)		
Map Zone:	New Mexico West 3003		

Site	W Lybrook UT 716 Pad				
Site Position:		Northing:	1,901,036.93 usft	Latitude:	36.224684
From:	Lat/Long	Easting:	524,357.92 usft	Longitude:	-107.750751
Position Uncertainty:	0.00 usft	Slot Radius:	13-3/16 "	Grid Convergence:	0.05 °

Well	W Lybrook UT 755H					
Well Position	+N/-S	0.00 usft	Northing:	1,901,069.65 usft	Latitude:	36.224774
	+E/-W	0.00 usft	Easting:	524,307.46 usft	Longitude:	-107.750922
Position Uncertainty		0.00 usft	Wellhead Elevation:	0.00 usft	Ground Level:	6,719.00 usft

Wellbore	Wellbore #1				
Magnetics	Model Name	Sample Date	Declination (°)	Dip Angle (°)	Field Strength (nT)
	HDGM	6/13/2017	9.03	62.85	49,661

Design	Actual				
Audit Notes:					
Version:	1.0	Phase:	ACTUAL	Tie On Depth:	0.00
Vertical Section:	Depth From (TVD) (usft)	+N/-S (usft)	+E/-W (usft)	Direction (°)	
	0.00	0.00	0.00	135.24	

Survey Program	Date	9/22/2017			
From (usft)	To (usft)	Survey (Wellbore)	Tool Name	Description	
21.00	307.00	Gyros (Wellbore #1)	NS-GYRO-MS	North sensing gyrocompassing m/s	
440.00	4,255.00	SDI MWD Intermediate (Wellbore #1)	MWD+HDGM	OWSG MWD + HDGM	
4,287.00	5,578.00	SDI MWD Curve (Wellbore #1)	MWD+HDGM	OWSG MWD + HDGM	
5,680.00	14,903.00	SDI MWD Lateral (Wellbore #1)	MWD+HDGM	OWSG MWD + HDGM	

Survey										
Measured Depth (usft)	Inclination (°)	Azimuth (°)	Vertical Depth (usft)	+N/-S (usft)	+E/-W (usft)	Map Northing (usft)	Map Easting (usft)	Latitude	Longitude	
0.00	0.00	0.00	0.00	0.00	0.00	1,901,069.65	524,307.46	36.224774	-107.750922	
21.00	0.00	0.00	21.00	0.00	0.00	1,901,069.65	524,307.46	36.224774	-107.750922	
51.00	0.53	60.28	51.00	0.07	0.12	1,901,069.71	524,307.58	36.224774	-107.750922	
81.00	0.06	346.32	81.00	0.15	0.24	1,901,069.80	524,307.69	36.224775	-107.750921	
111.00	0.45	226.44	111.00	0.09	0.15	1,901,069.73	524,307.60	36.224774	-107.750922	
141.00	0.82	195.04	141.00	-0.20	0.01	1,901,069.44	524,307.46	36.224774	-107.750922	
171.00	1.04	193.03	170.99	-0.67	-0.11	1,901,068.97	524,307.35	36.224772	-107.750923	
201.00	1.10	198.47	200.99	-1.21	-0.26	1,901,068.43	524,307.19	36.224771	-107.750923	
231.00	1.16	207.64	230.98	-1.75	-0.49	1,901,067.89	524,306.96	36.224769	-107.750924	

Scientific Drilling Int.
Survey Report - Geographic

Company:	WPX Energy	Local Co-ordinate Reference:	Well W Lybrook UT 755H
Project:	T23N R9W	TVD Reference:	GL 6719 + KB 21 = @ 6740.00usft (Cyclone 32)
Site:	W Lybrook UT 716 Pad	MD Reference:	GL 6719 + KB 21 = @ 6740.00usft (Cyclone 32)
Well:	W Lybrook UT 755H	North Reference:	True
Wellbore:	Wellbore #1	Survey Calculation Method:	Minimum Curvature
Design:	Actual	Database:	Grand Junction District

Survey									
Measured Depth (usft)	Inclination (°)	Azimuth (°)	Vertical Depth (usft)	+N/-S (usft)	+E/-W (usft)	Map Northing (usft)	Map Easting (usft)	Latitude	Longitude
261.00	1.23	220.86	260.98	-2.27	-0.85	1,901,067.38	524,306.61	36.224768	-107.750925
291.00	1.26	229.40	290.97	-2.73	-1.31	1,901,066.92	524,306.15	36.224767	-107.750927
307.00	1.32	227.15	306.96	-2.97	-1.58	1,901,066.68	524,305.88	36.224766	-107.750928
440.00	1.17	214.50	439.93	-5.13	-3.47	1,901,064.52	524,303.99	36.224760	-107.750934
First Survey Int.									
532.00	2.48	243.93	531.89	-6.77	-5.79	1,901,062.87	524,301.67	36.224755	-107.750942
622.00	4.48	246.04	621.72	-9.06	-10.75	1,901,060.58	524,296.71	36.224749	-107.750959
712.00	6.67	244.43	711.28	-12.74	-18.68	1,901,056.89	524,288.79	36.224739	-107.750986
803.00	8.79	247.73	801.45	-17.66	-29.88	1,901,051.96	524,277.59	36.224726	-107.751024
894.00	10.16	249.43	891.21	-23.11	-43.83	1,901,046.49	524,263.65	36.224711	-107.751071
984.00	11.21	248.73	979.65	-29.08	-59.41	1,901,040.52	524,248.07	36.224694	-107.751124
1,074.00	12.54	248.74	1,067.72	-35.79	-76.67	1,901,033.79	524,230.81	36.224676	-107.751182
1,163.00	14.16	252.92	1,154.31	-42.49	-96.09	1,901,027.07	524,211.41	36.224657	-107.751248
1,254.00	16.48	248.46	1,242.08	-50.50	-118.74	1,901,019.04	524,188.76	36.224635	-107.751325
1,345.00	16.90	250.26	1,329.24	-59.71	-143.19	1,901,009.81	524,164.32	36.224610	-107.751408
1,437.00	18.36	247.91	1,416.92	-69.68	-169.21	1,900,999.82	524,138.31	36.224583	-107.751496
1,527.00	20.85	247.63	1,501.70	-81.10	-197.15	1,900,988.37	524,110.37	36.224551	-107.751591
1,617.00	23.64	248.95	1,584.99	-93.68	-228.81	1,900,975.77	524,078.72	36.224517	-107.751698
1,708.00	25.67	247.84	1,667.69	-107.67	-264.10	1,900,961.75	524,043.45	36.224478	-107.751818
1,799.00	25.41	245.94	1,749.80	-123.07	-300.18	1,900,946.32	524,007.38	36.224436	-107.751940
1,890.00	25.41	246.50	1,832.00	-138.81	-335.91	1,900,930.55	523,971.66	36.224393	-107.752061
1,980.00	25.83	246.02	1,913.15	-154.48	-371.53	1,900,914.85	523,936.05	36.224350	-107.752182
2,071.00	26.70	245.76	1,994.75	-170.93	-408.29	1,900,898.37	523,899.31	36.224305	-107.752307
2,162.00	27.57	246.82	2,075.74	-187.61	-446.29	1,900,881.65	523,861.32	36.224259	-107.752435
2,253.00	26.33	248.14	2,156.85	-203.42	-484.38	1,900,865.81	523,823.25	36.224215	-107.752564
2,345.00	27.52	247.73	2,238.88	-219.07	-522.99	1,900,850.13	523,784.65	36.224172	-107.752695
2,436.00	26.47	250.88	2,319.97	-233.68	-561.61	1,900,835.49	523,746.05	36.224132	-107.752826
2,527.00	25.17	249.44	2,401.88	-247.12	-598.89	1,900,822.01	523,708.77	36.224095	-107.752953
2,618.00	24.95	248.85	2,484.32	-260.84	-634.91	1,900,808.26	523,672.77	36.224057	-107.753075
2,709.00	22.95	247.56	2,567.48	-274.54	-669.21	1,900,794.53	523,638.48	36.224020	-107.753191
2,800.00	24.29	249.01	2,650.85	-288.02	-703.09	1,900,781.03	523,604.61	36.223983	-107.753306
2,891.00	26.59	251.50	2,733.03	-301.19	-739.88	1,900,767.83	523,567.83	36.223947	-107.753431
2,982.00	25.81	248.79	2,814.68	-314.82	-777.67	1,900,754.17	523,530.06	36.223909	-107.753559
3,073.00	27.22	248.75	2,896.10	-329.53	-815.53	1,900,739.42	523,492.20	36.223869	-107.753687
3,163.00	26.11	249.07	2,976.53	-344.06	-853.22	1,900,724.86	523,454.53	36.223829	-107.753815
3,254.00	26.87	248.81	3,057.98	-358.65	-891.09	1,900,710.24	523,416.67	36.223789	-107.753943
3,349.00	25.13	247.76	3,143.36	-374.05	-929.79	1,900,694.81	523,377.99	36.223746	-107.754075
3,444.00	24.93	246.50	3,229.44	-389.67	-966.82	1,900,679.16	523,340.97	36.223704	-107.754200
3,539.00	25.42	248.71	3,315.42	-405.05	-1,004.18	1,900,663.74	523,303.62	36.223661	-107.754327
3,634.00	26.32	248.39	3,400.90	-420.21	-1,042.76	1,900,648.55	523,265.06	36.223620	-107.754458
3,729.00	23.89	246.99	3,486.92	-435.49	-1,080.05	1,900,633.24	523,227.78	36.223578	-107.754584
3,824.00	25.32	247.33	3,573.29	-450.84	-1,116.50	1,900,617.86	523,191.34	36.223535	-107.754708
3,920.00	25.96	249.13	3,659.83	-466.24	-1,155.08	1,900,602.42	523,152.77	36.223493	-107.754838
4,015.00	22.24	247.28	3,746.54	-480.60	-1,191.10	1,900,588.04	523,116.76	36.223454	-107.754960
4,111.00	21.10	247.91	3,835.75	-494.11	-1,223.87	1,900,574.49	523,084.00	36.223417	-107.755072
4,206.00	19.66	245.90	3,924.81	-507.07	-1,254.31	1,900,561.51	523,053.58	36.223381	-107.755175
4,255.00	17.43	243.16	3,971.26	-513.75	-1,268.38	1,900,554.82	523,039.51	36.223363	-107.755222
Last Survey Int.									
4,287.00	16.79	243.44	4,001.84	-517.98	-1,276.79	1,900,550.58	523,031.10	36.223351	-107.755251
First Survey Curve									
4,318.00	16.20	237.35	4,031.57	-522.31	-1,284.44	1,900,546.24	523,023.46	36.223339	-107.755277
4,350.00	16.88	230.28	4,062.25	-527.69	-1,291.77	1,900,540.86	523,016.13	36.223324	-107.755302
4,382.00	18.16	225.61	4,092.76	-534.15	-1,298.91	1,900,534.39	523,009.00	36.223307	-107.755326
4,413.00	19.42	221.55	4,122.11	-541.39	-1,305.78	1,900,527.15	523,002.14	36.223287	-107.755349
4,445.00	19.32	214.41	4,152.31	-549.74	-1,312.30	1,900,518.79	522,995.62	36.223264	-107.755371

Scientific Drilling Int.
Survey Report - Geographic

Company:	WPX Energy	Local Co-ordinate Reference:	Well W Lybrook UT 755H
Project:	T23N R9W	TVD Reference:	GL 6719 + KB 21 = @ 6740.00usft (Cyclone 32)
Site:	W Lybrook UT 716 Pad	MD Reference:	GL 6719 + KB 21 = @ 6740.00usft (Cyclone 32)
Well:	W Lybrook UT 755H	North Reference:	True
Wellbore:	Wellbore #1	Survey Calculation Method:	Minimum Curvature
Design:	Actual	Database:	Grand Junction District

Survey

Measured Depth (usft)	Inclination (°)	Azimuth (°)	Vertical Depth (usft)	+N/-S (usft)	+E/-W (usft)	Map Northing (usft)	Map Easting (usft)	Latitude	Longitude
4,477.00	19.54	207.22	4,182.49	-558.86	-1,317.74	1,900,509.66	522,990.19	36.223239	-107.755390
4,509.00	20.79	201.47	4,212.53	-568.91	-1,322.27	1,900,499.61	522,985.67	36.223211	-107.755405
4,540.00	21.66	197.07	4,241.43	-579.50	-1,325.96	1,900,489.02	522,981.99	36.223182	-107.755418
4,572.00	22.58	192.70	4,271.07	-591.14	-1,329.05	1,900,477.38	522,978.91	36.223150	-107.755428
4,604.00	24.29	189.06	4,300.44	-603.63	-1,331.43	1,900,464.88	522,976.53	36.223116	-107.755436
4,635.00	26.26	185.98	4,328.47	-616.75	-1,333.15	1,900,451.76	522,974.83	36.223080	-107.755442
4,667.00	27.81	182.42	4,356.97	-631.25	-1,334.21	1,900,437.26	522,973.79	36.223040	-107.755446
4,699.00	29.30	179.50	4,385.08	-646.54	-1,334.45	1,900,421.97	522,973.55	36.222998	-107.755446
4,731.00	29.59	176.69	4,412.95	-662.26	-1,333.93	1,900,406.25	522,974.09	36.222955	-107.755445
4,762.00	30.56	174.64	4,439.77	-677.75	-1,332.75	1,900,390.76	522,975.28	36.222912	-107.755441
4,794.00	33.23	172.59	4,466.94	-694.55	-1,330.86	1,900,373.97	522,977.19	36.222866	-107.755434
4,826.00	36.55	171.27	4,493.19	-712.66	-1,328.28	1,900,355.85	522,979.78	36.222816	-107.755426
4,858.00	39.43	169.61	4,518.40	-732.08	-1,325.00	1,900,336.44	522,983.08	36.222763	-107.755414
4,889.00	42.75	167.71	4,541.77	-752.05	-1,320.99	1,900,316.47	522,987.11	36.222708	-107.755401
4,921.00	46.36	165.80	4,564.57	-773.90	-1,315.83	1,900,294.63	522,992.28	36.222648	-107.755383
4,953.00	49.99	164.22	4,585.90	-796.92	-1,309.66	1,900,271.61	522,998.48	36.222585	-107.755362
4,984.00	54.23	164.08	4,604.94	-820.45	-1,302.97	1,900,248.09	523,005.18	36.222520	-107.755340
5,016.00	57.46	161.63	4,622.90	-845.75	-1,295.16	1,900,222.80	523,013.02	36.222451	-107.755313
5,048.00	59.58	158.95	4,639.61	-871.43	-1,285.95	1,900,197.12	523,022.25	36.222380	-107.755282
5,080.00	62.15	155.50	4,655.20	-897.19	-1,275.12	1,900,171.37	523,033.09	36.222309	-107.755245
5,111.00	63.50	154.05	4,669.35	-922.14	-1,263.37	1,900,146.43	523,044.87	36.222241	-107.755205
5,143.00	65.52	152.38	4,683.13	-947.92	-1,250.35	1,900,120.66	523,057.91	36.222170	-107.755161
5,175.00	67.99	151.45	4,695.75	-973.86	-1,236.51	1,900,094.74	523,071.78	36.222099	-107.755114
5,207.00	70.33	151.18	4,707.14	-1,000.09	-1,222.15	1,900,068.52	523,086.15	36.222027	-107.755066
5,239.00	70.72	149.81	4,717.81	-1,026.35	-1,207.30	1,900,042.27	523,101.03	36.221954	-107.755015
5,270.00	72.45	147.34	4,727.60	-1,051.44	-1,191.96	1,900,017.19	523,116.39	36.221886	-107.754963
5,302.00	74.79	145.28	4,736.62	-1,076.98	-1,174.93	1,899,991.67	523,133.44	36.221815	-107.754906
5,334.00	76.60	142.72	4,744.53	-1,102.06	-1,156.70	1,899,966.60	523,151.69	36.221746	-107.754844
5,365.00	79.66	140.66	4,750.91	-1,125.86	-1,137.90	1,899,942.82	523,170.51	36.221681	-107.754780
5,397.00	82.52	139.51	4,755.86	-1,150.10	-1,117.61	1,899,918.59	523,190.82	36.221615	-107.754711
5,429.00	85.26	138.40	4,759.27	-1,174.10	-1,096.72	1,899,894.62	523,211.73	36.221549	-107.754640
5,460.00	88.89	137.99	4,760.85	-1,197.17	-1,076.09	1,899,871.56	523,232.38	36.221485	-107.754570
5,524.00	91.81	138.95	4,760.46	-1,245.07	-1,033.66	1,899,823.69	523,274.85	36.221354	-107.754427
5,578.00	90.50	135.92	4,759.37	-1,284.83	-997.15	1,899,783.97	523,311.40	36.221244	-107.754303
Last Survey Curve									
5,606.00	90.45	135.93	4,759.14	-1,304.95	-977.67	1,899,763.87	523,330.90	36.221189	-107.754237
7" Casing@ 5606' MD, 1899763.87 N & 523330.90 E - 7"									
5,613.36	90.43	135.93	4,759.09	-1,310.23	-972.55	1,899,758.59	523,336.02	36.221175	-107.754219
755H POE									
5,680.00	90.30	135.94	4,758.66	-1,358.12	-926.20	1,899,710.74	523,382.41	36.221043	-107.754062
First Survey Lateral									
5,775.00	90.64	135.00	4,757.88	-1,425.84	-859.59	1,899,643.08	523,449.08	36.220857	-107.753836
5,870.00	91.04	134.09	4,756.49	-1,492.47	-791.89	1,899,576.50	523,516.84	36.220674	-107.753607
5,965.00	90.54	134.34	4,755.18	-1,558.71	-723.80	1,899,510.32	523,584.98	36.220492	-107.753376
6,060.00	90.61	133.36	4,754.22	-1,624.52	-655.30	1,899,444.57	523,653.54	36.220311	-107.753144
6,155.00	89.97	134.16	4,753.74	-1,690.22	-586.69	1,899,378.92	523,722.20	36.220131	-107.752911
6,251.00	89.46	136.33	4,754.22	-1,758.39	-519.10	1,899,310.81	523,789.85	36.219944	-107.752682
6,346.00	90.23	135.96	4,754.48	-1,826.89	-453.28	1,899,242.37	523,855.73	36.219755	-107.752459
6,441.00	89.53	135.88	4,754.68	-1,895.14	-387.20	1,899,174.18	523,921.87	36.219568	-107.752235
6,536.00	88.69	136.13	4,756.15	-1,963.47	-321.22	1,899,105.90	523,987.91	36.219380	-107.752011
6,631.00	88.90	135.54	4,758.15	-2,031.60	-255.04	1,899,037.83	524,054.14	36.219193	-107.751787
6,726.00	89.33	135.31	4,759.62	-2,099.27	-188.38	1,898,970.22	524,120.86	36.219007	-107.751561
6,821.00	90.27	135.72	4,759.95	-2,167.04	-121.81	1,898,902.50	524,187.49	36.218821	-107.751335
6,916.00	90.37	135.59	4,759.42	-2,234.98	-55.41	1,898,834.62	524,253.95	36.218634	-107.751110

Scientific Drilling Int.
Survey Report - Geographic

Company:	WPX Energy	Local Co-ordinate Reference:	Well W Lybrook UT 755H
Project:	T23N R9W	TVD Reference:	GL 6719 + KB 21 = @ 6740.00usft (Cyclone 32)
Site:	W Lybrook UT 716 Pad	MD Reference:	GL 6719 + KB 21 = @ 6740.00usft (Cyclone 32)
Well:	W Lybrook UT 755H	North Reference:	True
Wellbore:	Wellbore #1	Survey Calculation Method:	Minimum Curvature
Design:	Actual	Database:	Grand Junction District

Survey									
Measured Depth (usft)	Inclination (°)	Azimuth (°)	Vertical Depth (usft)	+N/-S (usft)	+E/-W (usft)	Map Northing (usft)	Map Easting (usft)	Latitude	Longitude
7,011.00	90.27	134.98	4,758.89	-2,302.49	11.43	1,898,767.17	524,320.84	36.218449	-107.750884
7,106.00	90.34	134.04	4,758.38	-2,369.08	79.18	1,898,700.63	524,388.65	36.218266	-107.750654
7,201.00	90.74	134.30	4,757.49	-2,435.27	147.31	1,898,634.50	524,456.84	36.218084	-107.750423
7,296.00	88.46	133.65	4,758.15	-2,501.23	215.67	1,898,568.60	524,525.26	36.217903	-107.750191
7,392.00	88.93	133.68	4,760.34	-2,567.50	285.10	1,898,502.39	524,594.74	36.217721	-107.749956
7,487.00	90.17	133.77	4,761.08	-2,633.16	353.75	1,898,436.79	524,663.45	36.217540	-107.749723
7,582.00	89.46	135.94	4,761.39	-2,700.16	421.09	1,898,369.85	524,730.84	36.217356	-107.749495
7,677.00	89.46	134.80	4,762.29	-2,767.76	487.83	1,898,302.30	524,797.64	36.217171	-107.749269
7,772.00	90.40	134.84	4,762.40	-2,834.72	555.21	1,898,235.40	524,865.08	36.216987	-107.749040
7,868.00	90.07	137.76	4,762.01	-2,904.12	621.53	1,898,166.06	524,931.45	36.216803	-107.748815
7,963.00	89.36	138.03	4,762.48	-2,974.60	685.22	1,898,095.63	524,995.21	36.216619	-107.748590
8,058.00	90.00	138.45	4,763.01	-3,045.46	748.49	1,898,024.82	525,058.54	36.216435	-107.748365
8,153.00	90.13	137.87	4,762.90	-3,116.24	811.86	1,897,954.10	525,121.97	36.216251	-107.748140
8,248.00	89.76	136.94	4,762.99	-3,186.17	876.16	1,897,884.22	525,186.32	36.216067	-107.747915
8,343.00	89.87	135.95	4,763.30	-3,255.02	941.62	1,897,815.43	525,251.84	36.215883	-107.747690
8,438.00	90.00	135.97	4,763.41	-3,323.31	1,007.66	1,897,747.19	525,317.94	36.215699	-107.747465
8,533.00	89.97	135.82	4,763.43	-3,391.53	1,073.78	1,897,679.03	525,384.11	36.215515	-107.747240
8,628.00	90.00	135.27	4,763.46	-3,459.34	1,140.31	1,897,611.28	525,450.71	36.215331	-107.747015
8,723.00	89.90	134.51	4,763.54	-3,526.38	1,207.61	1,897,544.29	525,518.07	36.215147	-107.746790
8,818.00	89.80	133.64	4,763.79	-3,592.46	1,275.86	1,897,478.27	525,586.37	36.214963	-107.746565
8,913.00	89.46	132.93	4,764.40	-3,657.60	1,345.02	1,897,413.19	525,655.58	36.214779	-107.746340
9,007.00	90.13	132.66	4,764.74	-3,721.46	1,413.99	1,897,349.39	525,724.61	36.214595	-107.746115
9,102.00	89.83	131.12	4,764.77	-3,784.89	1,484.71	1,897,286.02	525,793.38	36.214411	-107.745890
9,197.00	88.80	133.68	4,765.91	-3,848.94	1,554.85	1,897,222.03	525,865.58	36.214227	-107.745665
9,292.00	89.13	133.05	4,767.63	-3,914.16	1,623.90	1,897,156.87	525,934.69	36.214043	-107.745440
9,387.00	89.30	136.09	4,768.93	-3,980.81	1,691.57	1,897,090.27	526,002.41	36.213859	-107.745215
9,482.00	90.00	136.30	4,769.51	-4,049.37	1,757.33	1,897,021.77	526,068.22	36.213675	-107.744990
9,577.00	89.73	136.14	4,769.73	-4,117.96	1,823.05	1,896,953.24	526,134.01	36.213491	-107.744765
9,672.00	90.13	135.28	4,769.85	-4,185.96	1,889.39	1,896,885.29	526,200.40	36.213307	-107.744540
9,767.00	90.37	134.55	4,769.43	-4,253.04	1,956.67	1,896,818.27	526,267.74	36.213123	-107.744315
9,862.00	89.97	135.24	4,769.15	-4,320.09	2,023.96	1,896,751.28	526,335.09	36.212939	-107.744090
9,956.00	90.33	134.65	4,768.90	-4,386.49	2,090.49	1,896,684.93	526,401.68	36.212755	-107.743865
10,052.00	90.98	134.75	4,767.81	-4,454.01	2,158.73	1,896,617.47	526,469.97	36.212571	-107.743640
10,142.00	87.98	133.51	4,768.62	-4,516.67	2,223.31	1,896,554.87	526,534.61	36.212387	-107.743415
10,234.00	88.89	133.38	4,771.14	-4,579.91	2,290.08	1,896,491.69	526,601.43	36.212203	-107.743190
10,325.00	88.22	131.81	4,773.43	-4,641.48	2,357.05	1,896,430.18	526,668.45	36.212019	-107.742965
10,416.00	89.23	133.48	4,775.46	-4,703.11	2,423.96	1,896,368.60	526,735.42	36.211835	-107.742740
10,507.00	89.23	135.77	4,776.68	-4,767.02	2,488.72	1,896,304.74	526,800.23	36.211651	-107.742515
10,599.00	90.27	135.76	4,777.08	-4,832.93	2,552.90	1,896,238.88	526,864.46	36.211467	-107.742290
10,690.00	90.84	135.06	4,776.20	-4,897.74	2,616.78	1,896,174.14	526,928.40	36.211283	-107.742065
10,779.00	91.14	134.37	4,774.66	-4,960.35	2,680.01	1,896,111.58	526,991.69	36.211099	-107.741840
10,870.00	91.71	134.22	4,772.40	-5,023.88	2,745.13	1,896,048.11	527,056.85	36.210915	-107.741615
10,960.00	89.87	135.08	4,771.16	-5,087.12	2,809.15	1,895,984.92	527,120.92	36.210731	-107.741390
11,049.00	89.73	134.33	4,771.47	-5,149.72	2,872.40	1,895,922.37	527,184.23	36.210547	-107.741165
11,139.00	90.10	133.76	4,771.60	-5,212.29	2,937.09	1,895,859.85	527,248.98	36.210363	-107.740940
11,230.00	89.53	133.37	4,771.90	-5,275.01	3,003.03	1,895,797.19	527,314.97	36.210179	-107.740715
11,320.00	89.90	132.97	4,772.34	-5,336.58	3,068.67	1,895,735.68	527,380.66	36.210000	-107.740500
11,410.00	88.99	134.59	4,773.22	-5,398.85	3,133.64	1,895,673.47	527,445.69	36.209821	-107.740285
11,501.00	89.36	133.87	4,774.53	-5,462.31	3,198.84	1,895,610.05	527,510.94	36.209642	-107.740070
11,592.00	89.76	133.10	4,775.22	-5,524.93	3,264.86	1,895,547.49	527,577.01	36.209463	-107.739855
11,683.00	89.56	134.81	4,775.76	-5,588.09	3,330.37	1,895,484.38	527,642.57	36.209284	-107.739640
11,773.00	88.82	134.86	4,777.04	-5,651.54	3,394.18	1,895,420.99	527,706.44	36.209105	-107.739425
11,863.00	88.66	137.93	4,779.02	-5,716.69	3,456.23	1,895,355.90	527,768.55	36.208926	-107.739210
11,952.00	89.43	137.86	4,780.50	-5,782.71	3,515.90	1,895,289.93	527,828.27	36.208747	-107.739000
12,043.00	90.27	137.95	4,780.74	-5,850.23	3,576.90	1,895,222.45	527,889.33	36.208568	-107.738785

Scientific Drilling Int.
Survey Report - Geographic

Company:	WPX Energy	Local Co-ordinate Reference:	Well W Lybrook UT 755H
Project:	T23N R9W	TVD Reference:	GL 6719 + KB 21 = @ 6740.00usft (Cyclone 32)
Site:	W Lybrook UT 716 Pad	MD Reference:	GL 6719 + KB 21 = @ 6740.00usft (Cyclone 32)
Well:	W Lybrook UT 755H	North Reference:	True
Wellbore:	Wellbore #1	Survey Calculation Method:	Minimum Curvature
Design:	Actual	Database:	Grand Junction District

Survey									
Measured Depth (usft)	Inclination (°)	Azimuth (°)	Vertical Depth (usft)	+N/-S (usft)	+E/-W (usft)	Map Northing (usft)	Map Easting (usft)	Latitude	Longitude
12,132.00	90.37	137.45	4,780.24	-5,916.06	3,636.80	1,895,156.68	527,949.28	36.208521	-107.738595
12,223.00	91.17	137.08	4,779.02	-5,982.89	3,698.54	1,895,089.90	528,011.09	36.208337	-107.738385
12,313.00	90.00	137.30	4,778.10	-6,048.91	3,759.70	1,895,023.93	528,072.30	36.208156	-107.738178
12,404.00	89.90	136.27	4,778.18	-6,115.23	3,822.01	1,894,957.66	528,134.66	36.207974	-107.737967
12,495.00	89.87	135.54	4,778.36	-6,180.59	3,885.33	1,894,892.36	528,198.04	36.207794	-107.737752
12,585.00	90.50	134.98	4,778.07	-6,244.51	3,948.68	1,894,828.49	528,261.45	36.207619	-107.737538
12,677.00	89.16	136.60	4,778.34	-6,310.45	4,012.83	1,894,762.60	528,325.65	36.207437	-107.737320
12,767.00	90.34	136.70	4,778.74	-6,375.90	4,074.61	1,894,697.21	528,387.48	36.207258	-107.737111
12,858.00	91.28	136.64	4,777.45	-6,442.09	4,137.05	1,894,631.08	528,449.98	36.207076	-107.736899
12,949.00	91.38	135.91	4,775.34	-6,507.83	4,199.93	1,894,565.39	528,512.91	36.206895	-107.736686
13,040.00	90.64	136.00	4,773.73	-6,573.23	4,263.18	1,894,500.04	528,576.22	36.206715	-107.736472
13,130.00	91.38	135.66	4,772.15	-6,637.77	4,325.88	1,894,435.55	528,638.98	36.206538	-107.736259
13,220.00	90.10	136.33	4,770.98	-6,702.50	4,388.40	1,894,370.88	528,701.55	36.206360	-107.736047
13,311.00	89.70	137.15	4,771.14	-6,768.77	4,450.76	1,894,304.66	528,763.97	36.206178	-107.735836
13,406.00	90.50	136.56	4,770.98	-6,838.09	4,515.73	1,894,235.40	528,829.00	36.205988	-107.735616
13,501.00	89.93	136.93	4,770.62	-6,907.27	4,580.83	1,894,166.27	528,894.15	36.205798	-107.735395
13,596.00	90.84	136.78	4,769.98	-6,976.59	4,645.79	1,894,097.01	528,959.17	36.205607	-107.735175
13,691.00	89.46	135.98	4,769.73	-7,045.36	4,711.33	1,894,028.30	529,024.77	36.205418	-107.734953
13,786.00	90.50	135.69	4,769.77	-7,113.50	4,777.51	1,893,960.21	529,091.01	36.205231	-107.734729
13,881.00	88.42	136.02	4,770.66	-7,181.67	4,843.67	1,893,892.10	529,157.23	36.205044	-107.734505
13,976.00	89.13	136.05	4,772.69	-7,250.03	4,909.61	1,893,823.79	529,223.22	36.204856	-107.734281
14,071.00	89.66	135.76	4,773.70	-7,318.25	4,975.71	1,893,755.63	529,289.38	36.204668	-107.734057
14,166.00	90.87	136.08	4,773.26	-7,386.49	5,041.79	1,893,687.44	529,355.53	36.204481	-107.733833
14,260.00	91.11	135.54	4,771.63	-7,453.89	5,107.31	1,893,620.10	529,421.10	36.204296	-107.733611
14,355.00	89.26	135.76	4,771.33	-7,521.81	5,173.71	1,893,552.23	529,487.56	36.204109	-107.733386
14,450.00	90.13	135.58	4,771.83	-7,589.77	5,240.10	1,893,484.33	529,554.00	36.203922	-107.733161
14,545.00	90.40	135.14	4,771.39	-7,657.36	5,306.85	1,893,416.80	529,620.81	36.203737	-107.732935
14,641.00	89.26	134.35	4,771.68	-7,724.94	5,375.03	1,893,349.28	529,689.05	36.203551	-107.732704
14,736.00	89.87	134.17	4,772.40	-7,791.24	5,443.06	1,893,283.03	529,757.14	36.203369	-107.732473
14,820.00	89.95	134.10	4,772.53	-7,849.73	5,503.35	1,893,224.59	529,817.48	36.203208	-107.732269
RSI@ 14820' MD, 1893224.59 N & 529817.48 E									
14,831.00	89.96	134.09	4,772.54	-7,857.39	5,511.25	1,893,216.94	529,825.38	36.203187	-107.732242
Last Survey Lateral									
14,888.45	89.96	134.09	4,772.58	-7,897.36	5,552.52	1,893,177.00	529,866.68	36.203077	-107.732102
755H BHL									
14,903.00	89.96	134.09	4,772.59	-7,907.49	5,562.96	1,893,166.89	529,877.14	36.203049	-107.732067
BP@ 14903' MD, 1893166.89 N & 529877.14 E									

Casing Points				
Measured Depth (usft)	Vertical Depth (usft)	Name	Casing Diameter (")	Hole Diameter (")
5,606.00	4,759.14	7"	7	8-3/4

Scientific Drilling Int.
Survey Report - Geographic

Company:	WPX Energy	Local Co-ordinate Reference:	Well W Lybrook UT 755H
Project:	T23N R9W	TVD Reference:	GL 6719 + KB 21 = @ 6740.00usft (Cyclone 32)
Site:	W Lybrook UT 716 Pad	MD Reference:	GL 6719 + KB 21 = @ 6740.00usft (Cyclone 32)
Well:	W Lybrook UT 755H	North Reference:	True
Wellbore:	Wellbore #1	Survey Calculation Method:	Minimum Curvature
Design:	Actual	Database:	Grand Junction District

Design Annotations				
Measured Depth (usft)	Vertical Depth (usft)	Local Coordinates		Comment
		+N/-S (usft)	+E/-W (usft)	
440.00	439.93	-5.13	-3.47	First Survey Int.
4,255.00	3,971.26	-513.75	-1,268.38	Last Survey Int.
4,287.00	4,001.84	-517.98	-1,276.79	First Survey Curve
5,578.00	4,759.37	-1,284.83	-997.15	Last Survey Curve
5,606.00	4,759.14	-1,304.95	-977.67	7"Casing@ 5606' MD, 1899763.87 N & 523330.90 E
5,680.00	4,758.66	-1,358.12	-926.20	First Survey Lateral
14,820.00	4,772.53	-7,849.73	5,503.35	RSI@ 14820' MD, 1893224.59 N & 529817.48 E
14,831.00	4,772.54	-7,857.39	5,511.25	Last Survey Lateral
14,903.00	4,772.59	-7,907.49	5,562.96	BP@ 14903' MD, 1893166.89 N & 529877.14 E

Checked By: _____ Approved By: _____ Date: _____