

State of New Mexico  
Energy, Minerals and Natural Resources Department

**dhcSusana Martinez**  
Governor

**Ken McQueen**  
Cabinet Secretary

**Matthias Sayer**  
Deputy Cabinet Secretary

**Heather Riley**, Division Director  
Oil Conservation Division



New Mexico Oil Conservation Division approval and conditions  
listed below are made in accordance with OCD Rule 19.15.7.11  
and are in addition to the actions approved by BLM on the  
following 3160-4 or 3160-5 form.

Operator Signature Date: 4/6/2018

Well information:

API WELL #	Well Name	Well #	Operator Name	Type	Stat	County	Surf_Owner	UL	Sec	Twp	N/S	Rng	W/E
30-039-07316-00-00	SAN JUAN 28 6 UNIT	102	HILCORP ENERGY COMPANY	G	A	Rio Arriba	F	H	26	28	N	6	W

Application Type:

- ☐ P&A    ☐ Drilling/Casing Change    ☐ Location Change
- o ☒ **Recomplete/DHC** (For hydraulic fracturing operations review EPA Underground injection control Guidance #84)
- ☐ Other:

Conditions of Approval:

- Notify OCD 24hrs prior to beginning operations.
- Density exception must be approved prior to producing the Blanco Mesaverde.
- Submit CBL to the Agencies for review and approval prior to perforating

NMOCD Approved by Signature

4/19/18

Date

Q

UNITED STATES  
DEPARTMENT OF THE INTERIOR  
BUREAU OF LAND MANAGEMENT

RECEIVED

APR 09 2018

FORM APPROVED  
OMB No. 1004-0137  
Expires: July 31, 2010

**SUNDRY NOTICES AND REPORTS ON WELLS**  
*Do not use this form for proposals to drill or to re-enter an abandoned well. Use Form 3160-3 (APD) for such proposals.*

SUBMIT IN TRIPLICATE - Other instructions on page 2.

1. Type of Well

☐

Oil Well

☒

Gas Well

☐

Other

2. Name of Operator

Hilcorp Energy Company

3a. Address

PO Box 4700, Farmington, NM 87499

3b. Phone No. (include area code)

505-599-3400

4. Location of Well (Footage, Sec., T., R., M., or Survey Description)

Surface

Unit H (SENE) 1850'FNL & 790' FEL, Sec. 26, T28N, R06W

5. Lease Serial No.

NMSF079050A

6. If Indian, Allottee or Tribe Name

7. If Unit of CA/Agreement, Name and/or No.

8. Well Name and No.

San Juan 28-6 Unit 102

9. API Well No.

30-039-07316

10. Field and Pool or Exploratory Area

Blanco Mesaverde/Basin Dakota

11. Country or Parish, State

Rio Arriba, New Mexico

12. CHECK THE APPROPRIATE BOX(ES) TO INDICATE NATURE OF NOTICE, REPORT OR OTHER DATA

TYPE OF SUBMISSION

☒ Notice of Intent

☐ Subsequent Report

☐ Final Abandonment Notice

TYPE OF ACTION

☐ Acidize

☐ Alter Casing

☐ Casing Repair

☐ Change Plans

☐ Convert to Injection

☐ Deepen

☐ Fracture Treat

☐ New Construction

☐ Plug and Abandon

☐ Plug Back

☐ Production (Start/Resume)

☐ Reclamation

☒ Recomplete

☐ Temporarily Abandon

☐ Water Disposal

☐ Water Shut-Off

☐ Well Integrity

☐ Other

13. Describe Proposed or Completed Operation: Clearly state all pertinent details, including estimated starting date of any proposed work and approximate duration thereof. If the proposal is to deepen directionally or recompleate horizontally, give subsurface locations and measured and true vertical depths of all pertinent markers and zones. Attach the bond under which the work will be performed or provide the Bond No. on file with BLM/BIA. Required subsequent reports must be filed within 30 days following completion of the involved operations. If the operation results in a multiple completion or recompleation in a new interval, a Form 3160-4 must be filed once Testing has been completed. Final Abandonment Notices must be filed only after all requirements, including reclamation, have been completed and the operator has determined that the site is ready for final inspection.)

Hilcorp Energy Company plans to recompleate the subject well in the Mesaverde formation and downhole commingle with the existing Dakota. Attached is the MV C102, recompleate procedure & wellbore schematic. The DHC application will be submitted and approved prior to commingling. A closed loop system will be utilized.

**\*\*Please note: MV is pending approval of well density exemption\*\***

SEE ATTACHED  
FOR CONDITIONS  
OF APPROVAL

NMOCD

APR 12 2018

DISTRICT III

BLM'S APPROVAL OR ACCEPTANCE OF THIS  
ACTION DOES NOT RELIEVE THE LESSEE AND  
OPERATOR FROM OBTAINING ANY OTHER  
AUTHORIZATION REQUIRED FOR OPERATIONS  
ON FEDERAL AND INDIAN LANDS

14. I hereby certify that the foregoing is true and correct. Name (Printed/Typed)

Tammy Jones

Title Operations/Regulatory Technician - Sr.

Signature

Tammy Jones

Date

4/6/2018

THIS SPACE FOR FEDERAL OR STATE OFFICE USE

Approved by

William Tambekou

Title

Petroleum Engineer

Date

4/10/2018

Conditions of approval, if any, are attached. Approval of this notice does not warrant or certify that the applicant holds legal or equitable title to those rights in the subject lease which would entitle the applicant to conduct operations thereon.

Office

FFD

Title 18 U.S.C. Section 1001 and Title 43 U.S.C. Section 1212, make it a crime for any person knowingly and willfully to make to any department or agency of the United States any false, fictitious or fraudulent statements or representations as to any matter within its jurisdiction.

(Instruction on page 2)

NMOCD

**District I**

1625 N. French Dr., Hobbs, NM 88240  
Phone:(575) 393-6161 Fax:(575) 393-0720

**District II**

811 S. First St., Artesia, NM 88210  
Phone:(575) 748-1283 Fax:(575) 748-9720

**District III**

1000 Rio Brazos Rd., Aztec, NM 87410  
Phone:(505) 334-6178 Fax:(505) 334-6170

**District IV**

1220 S. St Francis Dr., Santa Fe, NM 87505  
Phone:(505) 476-3470 Fax:(505) 476-3462

**State of New Mexico**  
**Energy, Minerals and Natural**  
**Resources**  
**Oil Conservation Division**  
**1220 S. St Francis Dr.**  
**Santa Fe, NM 87505**

Form C-102  
August 1, 2011

Permit 250801

**WELL LOCATION AND ACREAGE DEDICATION PLAT**

1. API Number 30-039-07316	2. Pool Code 72319	3. Pool Name BLANCO-MESAVERDE (PRORATED GAS)
4. Property Code 318710	5. Property Name SAN JUAN 28 6 UNIT	6. Well No. 102
7. OGRID No. 372171	8. Operator Name HILCORP ENERGY COMPANY	9. Elevation 6650

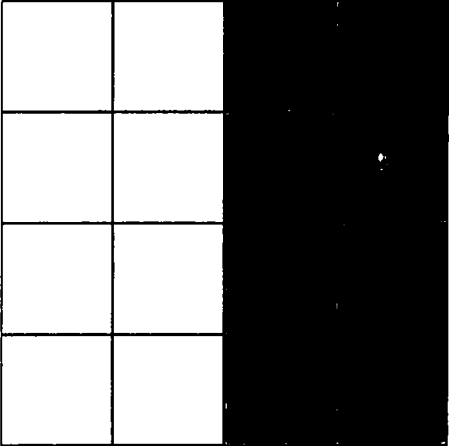
**10. Surface Location**

UL - Lot H	Section 26	Township 28N	Range 06W	Lot Idn	Feet From 1850	N/S Line N	Feet From 790	E/W Line E	County RIO ARRIBA
---------------	---------------	-----------------	--------------	---------	-------------------	---------------	------------------	---------------	----------------------

**11. Bottom Hole Location If Different From Surface**

UL - Lot	Section	Township	Range	Lot Idn	Feet From	N/S Line	Feet From	E/W Line	County
12. Dedicated Acres 320.00 E/2	13. Joint or Infill	14. Consolidation Code	15. Order No.						

**NO ALLOWABLE WILL BE ASSIGNED TO THIS COMPLETION UNTIL ALL INTERESTS HAVE BEEN CONSOLIDATED OR A NON-STANDARD UNIT HAS BEEN APPROVED BY THE DIVISION**

	<p style="text-align: center;"><b>OPERATOR CERTIFICATION</b></p> <p><i>I hereby certify that the information contained herein is true and complete to the best of my knowledge and belief, and that this organization either owns a working interest or unleased mineral interest in the land including the proposed bottom hole location(s) or has a right to drill this well at this location pursuant to a contract with an owner of such a mineral or working interest, or to a voluntary pooling agreement or a compulsory pooling order heretofore entered by the division.</i></p> <p>E-Signed By: <i>Tammy Jones</i>  Title: Operations/Regulatory Technician - Sr.  Date: 4/6/2018</p> <hr/> <p style="text-align: center;"><b>SURVEYOR CERTIFICATION</b></p> <p><i>I hereby certify that the well location shown on this plat was plotted from field notes of actual surveys made by me or under my supervision, and that the same is true and correct to the best of my belief.</i></p> <p>Surveyed By: Ernest V. Echohawk  Date of Survey: 9/11/1963  Certificate Number: 3602</p>
---	--



HILCORP ENERGY COMPANY  
SAN JUAN 28-6 UNIT 102  
MESA VERDE RECOMPLETION SUNDRY

JOB PROCEDURES

1. MIRU service rig and associated equipment; test BOP.
2. TOOH with 2 3/8" tubing set at 7,846'.
3. Set a 4-1/2" cast iron bridge plug at +/- 6,175' to isolate the Dakota.
4. RU Wireline. Run CBL. Record Top of Cement.
5. **IF NECESSARY** (Based on the results of the CBL top of cement) - Perform cement squeeze work.
6. Load the hole and pressure test the casing to frac pressure.
7. N/D BOP, N/U frac stack and test frac stack to frac pressure.
8. Perforate and frac the Mesa Verde in two or three stages (Top Perforation @ 5,050'; Bottom Perforation @ 6,000').
9. Isolate frac stages with a composite bridge plug.
10. Nipple down frac stack, nipple up BOP and test.
11. TIH with a mill and drill out top isolation plug and Mesa Verde frac plugs.
12. Clean out to Dakota isolation plug and, when water and sand rates are acceptable, flow test the Mesa Verde.
13. Drill out Dakota isolation plug and cleanout to PBTD of 7,958'. TOOH.
14. TIH and land production tubing. Get a commingled Dakota/Mesa Verde flow rate.



**HILCORP ENERGY COMPANY**  
**SAN JUAN 28-6 UNIT 102**  
**MESA VERDE RECOMPLETION SUNDRY**

**SAN JUAN 28-6 UNIT 102 - CURRENT WELLBORE SCHEMATIC**

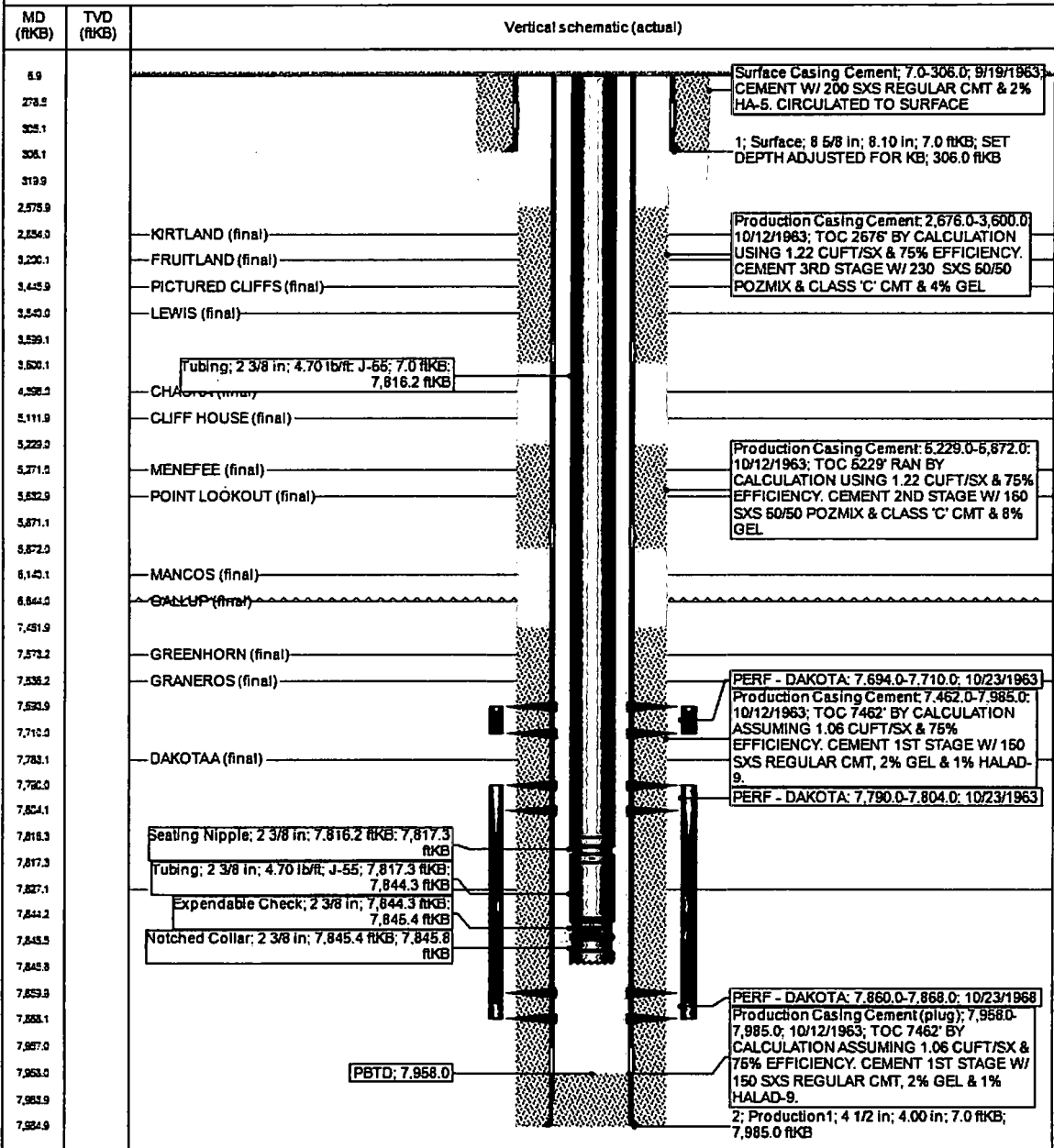


**Current Schematic - Version 3**

**Well Name: SAN JUAN 28-6 UNIT #102**

API Well 3003907316	Surface Legal Location 026-028N-006W-H	Field Name BACIN DAKOTA (PRORATED GAS)	License No.	State/Province NEW MEXICO	Well Configuration Type
Ground Elevation (ft) 6,660.00	Original KSRIT Elevation (ft) 6,657.00	KSR-Ground Distance (ft) 7.00	KSR-Casing Flange Distance (ft)	KSR-Tubing Hanger Distance (ft)	

**Original Hole, 4/4/2018 8:00:29 AM**







# United States Department of the Interior

## BUREAU OF LAND MANAGEMENT

Farmington District Office  
6251 College Blvd. - Suite A  
Farmington, New Mexico 87402  
[www.blm.gov/nm](http://www.blm.gov/nm)



### ***CASING REPAIR, WORKOVER, AND RECOMPLETION CONDITION OF APPROVAL***

1. If casing repair operations are needed, obtain prior approval from this office before commencing repairs.
2. If a CBL or other logs are run, provide this office with a copy.
3. After any casing repair operations, test cement squeeze to a minimum of 500# for 30 minutes with no more than 10 % pressure fall off in the 30 minutes test period. Provide test chart with your subsequent report of operations
4. A properly functioning BOP and related equipment must be installed prior to commencing workover, casing repair, and/or recompletion operations.
5. **Contact this office at (505) 564-7750 prior to conducting any cementing operations**

#### ***SPECIAL STIPULATIONS:***

1. **Pits will be fenced during work-over operation.**
2. **All disturbance will be kept on existing pad.**
3. **All pits will be pulled and closed immediately upon completion of the recompletion and work-over activities.**
4. **Pits will be lined with an impervious material at least 12 mils thick.**