

UNITED STATES
DEPARTMENT OF THE INTERIOR
BUREAU OF LAND MANAGEMENTFORM APPROVED
OMB NO. 1004-0137
Expires: January 31, 2018**SUNDRY NOTICES AND REPORTS ON WELLS**
*Do not use this form for proposals to drill or to re-enter an abandoned well. Use form 3160-3 (APD) for such proposals.*5. Lease Serial No.
1149IND84866. If Indian, Allottee or Tribe Name
EASTERN NAVAJO7. If Unit or CA/Agreement, Name and/or No.
892000844F8. Well Name and No.
GALLEGOS CANYON UNIT 202E9. API Well No.
30-045-24342-00-S110. Field and Pool or Exploratory Area
UNNAMED11. County or Parish, State
SAN JUAN COUNTY, NM**SUBMIT IN TRIPLICATE - Other instructions on page 2**

1. Type of Well

☐ Oil Well ☒ Gas Well ☐ Other

2. Name of Operator

BP AMERICA PRODUCTION CO

Contact: TOYA COLVIN

E-Mail: Toya.Colvin@bp.com

3a. Address

200 ENERGY COURT
FARMINGTON, NM 87401

3b. Phone No. (include area code)

Ph: 281.366.7148

4. Location of Well (Footage, Sec., T., R., M., or Survey Description)

Sec 33 T29N R12W NENW 0990FNL 1800FWL
36.687576 N Lat, 108.106873 W Lon**12. CHECK THE APPROPRIATE BOX(ES) TO INDICATE NATURE OF NOTICE, REPORT, OR OTHER DATA**

TYPE OF SUBMISSION

TYPE OF ACTION

☒ Notice of Intent☐ Subsequent Report☐ Final Abandonment Notice☐ Acidize☐ Alter Casing☐ Casing Repair☐ Change Plans☐ Convert to Injection☐ Deepen☐ Hydraulic Fracturing☐ New Construction☒ Plug and Abandon☐ Plug Back☐ Production (Start/Resume)☐ Reclamation☐ Recomplete☐ Temporarily Abandon☐ Water Disposal☐ Water Shut-Off☐ Well Integrity☐ Other

13. Describe Proposed or Completed Operation: Clearly state all pertinent details, including estimated starting date of any proposed work and approximate duration thereof. If the proposal is to deepen directionally or recompletable horizontally, give subsurface locations and measured and true vertical depths of all pertinent markers and zones. Attach the Bond under which the work will be performed or provide the Bond No. on file with BLM/BIA. Required subsequent reports must be filed within 30 days following completion of the involved operations. If the operation results in a multiple completion or recompletion in a new interval, a Form 3160-4 must be filed once testing has been completed. Final Abandonment Notices must be filed only after all requirements, including reclamation, have been completed and the operator has determined that the site is ready for final inspection.

As our engineer has communicated with you 4/25/2018, BP requests to P&A the subject well. Please see the attached P&A procedure and wellbore diagram.

In accordance with NMOCD Pit Rule 19.15.17.9 NMAC, BP will use a closed-loop system during operations.

Allotted

Notify NMOCD 24 hrs
prior to beginning
operations

NMOCD

MAY 02 2018

DISTRICT III

14. I hereby certify that the foregoing is true and correct.

Electronic Submission #412488 verified by the BLM Well Information System
For BP AMERICA PRODUCTION CO. sent to the Farmington
Committed to AFMSS for processing by JACK SAVAGE on 04/27/2018 (18JWS0082SE)

Name (Printed/Typed) TOYA COLVIN

Title REGULATORY ANALYST

Signature (Electronic Submission)

Date 04/26/2018

THIS SPACE FOR FEDERAL OR STATE OFFICE USE

Approved By JACK SAVAGE

Title PETROLEUM ENGINEER

Date 04/27/2018

Conditions of approval, if any, are attached. Approval of this notice does not warrant or certify that the applicant holds legal or equitable title to those rights in the subject lease which would entitle the applicant to conduct operations thereon.

Office Farmington

Title 18 U.S.C. Section 1001 and Title 43 U.S.C. Section 1212, make it a crime for any person knowingly and willfully to make to any department or agency of the United States any false, fictitious or fraudulent statements or representations as to any matter within its jurisdiction.

(Instructions on page 2)

**** BLM REVISED ** BLM REVISED ** BLM REVISED ** BLM REVISED ** BLM REVISED ****

BP NMOCD verbal approval given 5/1/18

April 26, 2018

NMOCD

BP would like to permanently abandon the GCU 202E as per the proposed procedure and wellbore sketches.

PLUG AND ABANDONMENT PROCEDURE

990' FNL and 1800' FWL, Section 33, T29N, R12W
San Juan County, New Mexico / API 30-045-24342

Note: All cement volumes use 100% excess outside pipe and 50% excess inside. The stabilizing wellbore fluid will be 12.2 ppg, sufficient to balance all exposed formation pressures. All cement will be Class B, mixed at 15.6 ppg with a 1.18 cf/sx yield.

1. Install and test rig anchors. Comply with all NMOCD, BLM, and Operator safety rules and regulations. Prepare a lined waste fluid pit. Conduct safety meeting for all personnel on location. MOL and RU daylight pulling unit. Record casing, tubing, and bradenhead pressures. NU relief line and blow down well; kill well with water as necessary. ND wellhead and NU BOP. Function test BOP.

2. Rods: ☐ Yes ☒ No ☐ Unknown
Tubing: ☒ Yes ☐ No ☐ Unknown Size, Length: 2.375", 1700'
Packer: ☐ Yes ☒ No ☐ Unknown Type: N/A

If this well has rods or a packer, then modify the work sequence in step #2 as appropriate.

NOTE: The BLM requires a CBL to be run on all wells where the cement did not circulate to surface or a CBL was not previously run. This procedure is prepared with the understanding that it may be modified based on the TOC from the CBL.

3. RIH CBL from 5900' to surface. Submit copies of log to regulatory bodies.
4. **Plug #1 (Dakota perforations and top, 5699' – 5799')**: Mix 12 sx Class B cement and spot a plug inside casing to cover the Dakota top. Shut in well and WOC.
5. **Plug #2 (Gallup top, 4824' – 4834')**: Mix and pump 12 sx Class B cement and spot a balanced plug inside casing to cover the Gallup top. Shut in well and WOC.
6. **Plug #3 (Mancos top, 3925' – 4025')**: Mix and pump 12 sx Class B cement and spot a balanced plug inside casing to cover the Mancos top. Shut in well and WOC.
7. **Plug #4 (Mesa Verde top, 2746' – 2846')**: Mix and pump 12 sx Class B cement and spot a balanced plug inside casing to cover the Mesa Verde top. Shut in well and WOC.
8. **Plug #5 (Pictured Cliffs top, 1193' – 1293')**: Mix and pump 12 sx Class B cement and spot a balanced plug inside casing to cover the Pictured Cliffs top. Shut in well and WOC.
9. **Plug #6 (Fruitland Coal top, 954' – 1054')**: Mix and pump 12 sx Class B cement and spot a plug inside casing to cover the Fruitland Coal top. Shut in well and WOC.

10. **Plug #7 (Kirtland top/surface, 353' – Surface):** Mix and pump 41 sx Class B cement and spot a balanced plug inside casing to cover the Kirtland top. Top off with cement as necessary.
11. ND cementing valves and cut off wellhead. Fill annuli with cement as necessary. Install P&A marker to comply with regulations. Record GPS coordinate for P&A marker on tower report. Photograph P&A marker in place. RD, MOL, and cut off anchors. Restore location per BLM stipulations.



GCU 202E
DK
 API # 30-045-24342
 Unit C - Sec. 33 - T29N - R12W
 San Juan, NM

Current WBD

14' KB
 GL: 5413'

Formation Tops

Ojo Alamo	Surface
Kirtland	136
Fruitland Co	1104
Pictured Clif	1318
Mesa Verde	2896
Mancos	4075
Gallup	4974
Dakota	5849

Deviation Survey

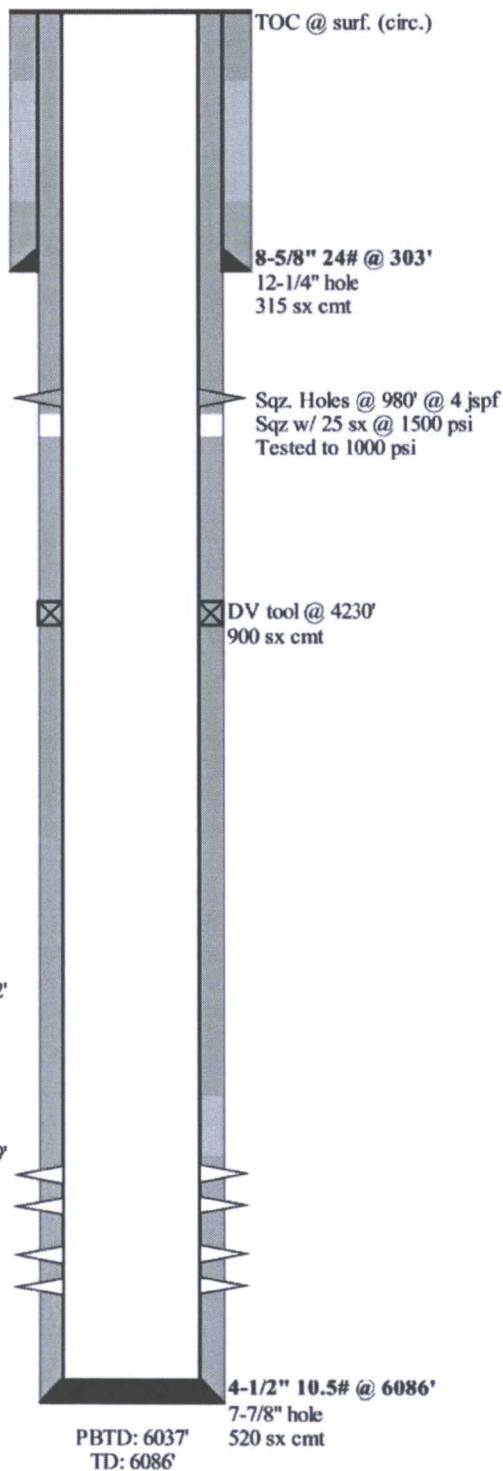
Depth	Inclination
305	0.50
821	0.50
1315	0.50
1928	0.50
2483	0.75
2976	0.75
3470	0.75
3965	0.75
4467	0.75
4949	0.75
5534	0.75
6086	0.75

Gallup Top: 4952'

Dakota Top: 5849'

Dakota Perforations

5852' - 5862' 2 spf, 0.38"
 5928' - 5964' 2 spf, 0.38"
 5982' - 5986' 2 spf, 0.38"
 Frac'd w/ 113k gal frac fluid & 148k# 20/40





Proposed WBD

14' KB
GL: 5413'

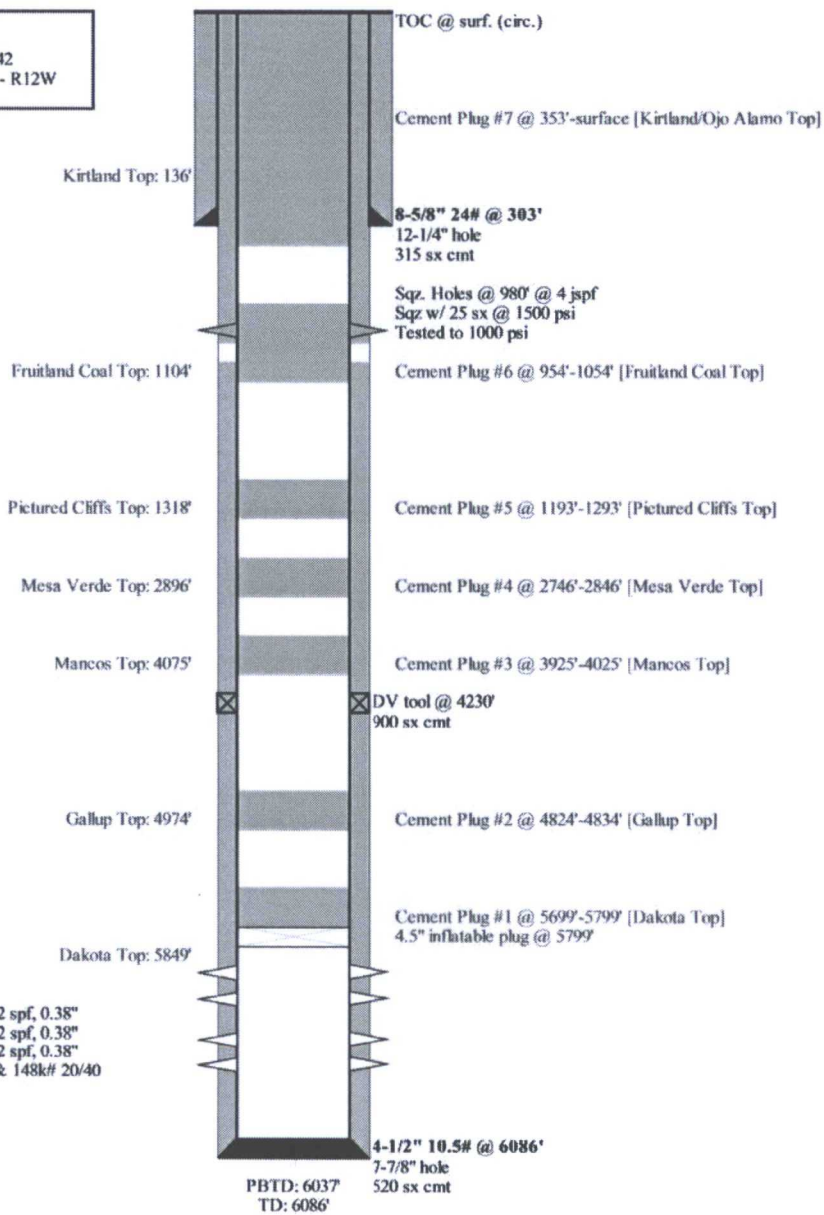
GCU 202E
DK
API # 30-045-24342
Unit C - Sec. 33 - T29N - R12W
San Juan, NM

Formation Tops

Ojo Alamo	Surface
Kirtland	136
Fruitland Coal	1104
Pictured Cliffs	1318
Mesa Verde	2896
Mancos	4075
Gallup	4974
Dakota	5849

Dakota Perforations

5852' - 5862'	2 spf, 0.38"
5928' - 5964'	2 spf, 0.38"
5982' - 5986'	2 spf, 0.38"
Frac'd w/ 113k gal frac fluid & 148k# 20/40	



**UNITED STATES DEPARTMENT OF THE INTERIOR
BUREAU OF LAND MANAGEMENT
FARMINGTON DISTRICT OFFICE
6251 COLLEGE BLVD.
FARMINGTON, NEW MEXICO 87402**

Attachment to notice of
Intention to Abandon:

Re: Permanent Abandonment
Well: Gallegos Canyon Unit 202E

CONDITIONS OF APPROVAL

1. Plugging operations authorized are subject to the attached "General Requirements for Permanent Abandonment of Wells on Federal and Indian Lease."

2. Farmington Office is to be notified at least 24 hours before the plugging operations commence (505) 564-7750.

3. The following modifications to your plugging program are to be made:

- a) Set Plug #2 (5024-4924) ft. to cover the Gallup top. BLM picks top of Gallup at 4974 ft.
- b) Set Plug #3 (4125-4025) ft. to cover the Mancos top. BLM picks top of Mancos at 4075 ft.
- c) Set Plug #4 (2929-2829) ft. to cover the Mesaverde top. BLM picks top of Mesaverde at 2879 ft.
- d) Add a cement plug (2346 – 2246) ft. to cover the Chacra top. BLM picks top of Chacra at 2296 ft.
- e) Set Plug #5 (1368-1268) ft. to cover the Pictured Cliffs top. BLM picks top of Pictured Cliffs at 1318 ft.
- f) Set Plug #6 (1088-988) ft. to cover the Fruitland top. BLM picks top of Fruitland at 1038 ft.

Operator will run a CBL to verify cement top. Submit the electronic copy of the log for verification to the following addresses: jwsavage@blm.gov Brandon.Powell@state.nm.us

You are also required to place cement excesses per 4.2 and 4.4 of the attached General Requirements.