

District I
1625 N. French Dr., Hobbs, NM 88240
District II
1301 W. Grand Avenue, Artesia, NM 88210
District III
1000 Rio Brazos Road, Aztec, NM 87410
District IV
1220 S. St. Francis Dr., Santa Fe, NM 87505

State of New Mexico
Energy Minerals and Natural Resources
Department
Oil Conservation Division
1220 South St. Francis Dr.
Santa Fe, NM 87505

Form C-144
July 21, 2008

For temporary pits, closed-loop systems, and below-grade tanks, submit to the appropriate NMOCD District Office.
For permanent pits and exceptions submit to the Santa Fe Environmental Bureau office and provide a copy to the appropriate NMOCD District Office.

Pit, Closed-Loop System, Below-Grade Tank, or
Proposed Alternative Method Permit or Closure Plan Application

- Type of action: ☐ Permit of a pit, closed-loop system, below-grade tank, or proposed alternative method
☒ Closure of a pit, closed-loop system, below-grade tank, or proposed alternative method
☐ Modification to an existing permit
☐ Closure plan only submitted for an existing permitted or non-permitted pit, closed-loop system, below-grade tank, or proposed alternative method

Instructions: Please submit one application (Form C-144) per individual pit, closed-loop system, below-grade tank or alternative request

Please be advised that approval of this request does not relieve the operator of liability should operations result in pollution of surface water, ground water or the environment. Nor does approval relieve the operator of its responsibility to comply with any other applicable governmental authority's rules, regulations or ordinances.

Operator: Elm Ridge Exploration OGRID #: 149052
Address: P.O. Box 156; Bloomfield, NM 87413
Facility or well name: Tonkin 6
API Number: 3003924096 OCD Permit Number:
U/L or Qtr/Qtr A Section 18 Township 24N Range 3W County: Rio Arriba
Center of Proposed Design: Latitude 36.314481 Longitude -107.189933 NAD: ☐ 1927 ☒ 1983
Surface Owner: ☒ Federal ☐ State ☐ Private ☐ Tribal Trust or Indian Allotment

2.
☐ **Pit:** Subsection F or G of 19.15.17.11 NMAC
Temporary: ☐ Drilling ☐ Workover
☐ Permanent ☐ Emergency ☐ Cavitation ☐ P&A
☐ Lined ☐ Unlined Liner type: Thickness _____ mil ☐ LLDPE ☐ HDPE ☐ PVC ☐ Other _____
☐ String-Reinforced
Liner Seams: ☐ Welded ☐ Factory ☐ Other _____ Volume: _____ bbl Dimensions: L _____ x W _____ x D _____

3.
☐ **Closed-loop System:** Subsection H of 19.15.17.11 NMAC
Type of Operation: ☐ P&A ☐ Drilling a new well ☐ Workover or Drilling (Applies to activities which require prior approval of a permit or notice of intent)
☐ Drying Pad ☐ Above Ground Steel Tanks ☐ Haul-off Bins ☐ Other _____
☐ Lined ☐ Unlined Liner type: Thickness _____ mil ☐ LLDPE ☐ HDPE ☐ PVC ☐ Other _____
Liner Seams: ☐ Welded ☐ Factory ☐ Other _____

4.
☒ **Below-grade tank:** Subsection I of 19.15.17.11 NMAC
Volume: 60 bbl Type of fluid: Produced water
Tank Construction material: Steel tank
☐ Secondary containment with leak detection ☐ Visible sidewalls, liner, 6-inch lift and automatic overflow shut-off
☐ Visible sidewalls and liner ☐ Visible sidewalls only ☒ Other Single walled tank
Liner type: Thickness _____ mil ☐ HDPE ☐ PVC ☐ Other _____

5.
☐ **Alternative Method:**
Submittal of an exception request is required. Exceptions must be submitted to the Santa Fe Environmental Bureau office for consideration of approval.

26

11.

Temporary Pits, Emergency Pits, and Below-grade Tanks Permit Application Attachment Checklist: Subsection B of 19.15.17.9 NMAC**Instructions:** Each of the following items must be attached to the application. Please indicate, by a check mark in the box, that the documents are attached.

- ☐ Hydrogeologic Report (Below-grade Tanks) - based upon the requirements of Paragraph (4) of Subsection B of 19.15.17.9 NMAC
☐ Hydrogeologic Data (Temporary and Emergency Pits) - based upon the requirements of Paragraph (2) of Subsection B of 19.15.17.9 NMAC
☒ Siting Criteria Compliance Demonstrations - based upon the appropriate requirements of 19.15.17.10 NMAC
☐ Design Plan - based upon the appropriate requirements of 19.15.17.11 NMAC
☒ Operating and Maintenance Plan - based upon the appropriate requirements of 19.15.17.12 NMAC
☒ Closure Plan (Please complete Boxes 14 through 18, if applicable) - based upon the appropriate requirements of Subsection C of 19.15.17.9 NMAC and 19.15.17.13 NMAC

☐ Previously Approved Design (attach copy of design) API Number: _____ or Permit Number: _____

12.

Closed-loop Systems Permit Application Attachment Checklist: Subsection B of 19.15.17.9 NMAC**Instructions:** Each of the following items must be attached to the application. Please indicate, by a check mark in the box, that the documents are attached.

- ☐ Geologic and Hydrogeologic Data (only for on-site closure) - based upon the requirements of Paragraph (3) of Subsection B of 19.15.17.9
☐ Siting Criteria Compliance Demonstrations (only for on-site closure) - based upon the appropriate requirements of 19.15.17.10 NMAC
☐ Design Plan - based upon the appropriate requirements of 19.15.17.11 NMAC
☐ Operating and Maintenance Plan - based upon the appropriate requirements of 19.15.17.12 NMAC
☐ Closure Plan (Please complete Boxes 14 through 18, if applicable) - based upon the appropriate requirements of Subsection C of 19.15.17.9 NMAC and 19.15.17.13 NMAC

☐ Previously Approved Design (attach copy of design) API Number: _____

☐ Previously Approved Operating and Maintenance Plan API Number: _____ (Applies only to closed-loop system that use above ground steel tanks or haul-off bins and propose to implement waste removal for closure)

13.

Permanent Pits Permit Application Checklist: Subsection B of 19.15.17.9 NMAC**Instructions:** Each of the following items must be attached to the application. Please indicate, by a check mark in the box, that the documents are attached.

- ☐ Hydrogeologic Report - based upon the requirements of Paragraph (1) of Subsection B of 19.15.17.9 NMAC
☐ Siting Criteria Compliance Demonstrations - based upon the appropriate requirements of 19.15.17.10 NMAC
☐ Climatological Factors Assessment
☐ Certified Engineering Design Plans - based upon the appropriate requirements of 19.15.17.11 NMAC
☐ Dike Protection and Structural Integrity Design - based upon the appropriate requirements of 19.15.17.11 NMAC
☐ Leak Detection Design - based upon the appropriate requirements of 19.15.17.11 NMAC
☐ Liner Specifications and Compatibility Assessment - based upon the appropriate requirements of 19.15.17.11 NMAC
☐ Quality Control/Quality Assurance Construction and Installation Plan
☐ Operating and Maintenance Plan - based upon the appropriate requirements of 19.15.17.12 NMAC
☐ Freeboard and Overtopping Prevention Plan - based upon the appropriate requirements of 19.15.17.11 NMAC
☐ Nuisance or Hazardous Odors, including H₂S, Prevention Plan
☐ Emergency Response Plan
☐ Oil Field Waste Stream Characterization
☐ Monitoring and Inspection Plan
☐ Erosion Control Plan
☐ Closure Plan - based upon the appropriate requirements of Subsection C of 19.15.17.9 NMAC and 19.15.17.13 NMAC

14.

Proposed Closure: 19.15.17.13 NMAC**Instructions:** Please complete the applicable boxes, Boxes 14 through 18, in regards to the proposed closure plan.

Type: ☐ Drilling ☐ Workover ☐ Emergency ☐ Cavitation ☐ P&A ☐ Permanent Pit ☒ Below-grade Tank ☐ Closed-loop System
☐ Alternative

Proposed Closure Method: ☒ Waste Excavation and Removal
☐ Waste Removal (Closed-loop systems only)
☐ On-site Closure Method (Only for temporary pits and closed-loop systems)
☐ In-place Burial ☐ On-site Trench Burial
☐ Alternative Closure Method (Exceptions must be submitted to the Santa Fe Environmental Bureau for consideration)

15.

Waste Excavation and Removal Closure Plan Checklist: (19.15.17.13 NMAC) **Instructions:** Each of the following items must be attached to the closure plan. Please indicate, by a check mark in the box, that the documents are attached.

- ☒ Protocols and Procedures - based upon the appropriate requirements of 19.15.17.13 NMAC
☒ Confirmation Sampling Plan (if applicable) - based upon the appropriate requirements of Subsection F of 19.15.17.13 NMAC
☒ Disposal Facility Name and Permit Number (for liquids, drilling fluids and drill cuttings)
☒ Soil Backfill and Cover Design Specifications - based upon the appropriate requirements of Subsection H of 19.15.17.13 NMAC
☒ Re-vegetation Plan - based upon the appropriate requirements of Subsection I of 19.15.17.13 NMAC
☒ Site Reclamation Plan - based upon the appropriate requirements of Subsection G of 19.15.17.13 NMAC

16.

Waste Removal Closure For Closed-loop Systems That Utilize Above Ground Steel Tanks or Haul-off Bins Only: (19.15.17.13.D NMAC)**Instructions: Please indentify the facility or facilities for the disposal of liquids, drilling fluids and drill cuttings. Use attachment if more than two facilities are required.**

Disposal Facility Name: _____ Disposal Facility Permit Number: _____

Disposal Facility Name: _____ Disposal Facility Permit Number: _____

Will any of the proposed closed-loop system operations and associated activities occur on or in areas that *will not* be used for future service and operations?☐ Yes (If yes, please provide the information below) ☐ No*Required for impacted areas which will not be used for future service and operations:*☐ Soil Backfill and Cover Design Specifications - based upon the appropriate requirements of Subsection H of 19.15.17.13 NMAC☐ Re-vegetation Plan - based upon the appropriate requirements of Subsection I of 19.15.17.13 NMAC☐ Site Reclamation Plan - based upon the appropriate requirements of Subsection G of 19.15.17.13 NMAC

17.

Siting Criteria (regarding on-site closure methods only): 19.15.17.10 NMAC**Instructions: Each siting criteria requires a demonstration of compliance in the closure plan. Recommendations of acceptable source material are provided below. Requests regarding changes to certain siting criteria may require administrative approval from the appropriate district office or may be considered an exception which must be submitted to the Santa Fe Environmental Bureau office for consideration of approval. Justifications and/or demonstrations of equivalency are required. Please refer to 19.15.17.10 NMAC for guidance.**

Ground water is less than 50 feet below the bottom of the buried waste.

- NM Office of the State Engineer - iWATERS database search; USGS; Data obtained from nearby wells

☐ Yes ☐ No
☐ NA

Ground water is between 50 and 100 feet below the bottom of the buried waste

- NM Office of the State Engineer - iWATERS database search; USGS; Data obtained from nearby wells

☐ Yes ☐ No
☐ NA

Ground water is more than 100 feet below the bottom of the buried waste.

- NM Office of the State Engineer - iWATERS database search; USGS; Data obtained from nearby wells

☐ Yes ☐ No
☐ NA

Within 300 feet of a continuously flowing watercourse, or 200 feet of any other significant watercourse or lakebed, sinkhole, or playa lake (measured from the ordinary high-water mark).

- Topographic map; Visual inspection (certification) of the proposed site

☐ Yes ☐ No

Within 300 feet from a permanent residence, school, hospital, institution, or church in existence at the time of initial application.

- Visual inspection (certification) of the proposed site; Aerial photo; Satellite image

☐ Yes ☐ No

Within 500 horizontal feet of a private, domestic fresh water well or spring that less than five households use for domestic or stock watering purposes, or within 1000 horizontal feet of any other fresh water well or spring, in existence at the time of initial application.

- NM Office of the State Engineer - iWATERS database; Visual inspection (certification) of the proposed site

☐ Yes ☐ No

Within incorporated municipal boundaries or within a defined municipal fresh water well field covered under a municipal ordinance adopted pursuant to NMSA 1978, Section 3-27-3, as amended.

- Written confirmation or verification from the municipality; Written approval obtained from the municipality

☐ Yes ☐ No

Within 500 feet of a wetland.

- US Fish and Wildlife Wetland Identification map; Topographic map; Visual inspection (certification) of the proposed site

☐ Yes ☐ No

Within the area overlying a subsurface mine.

- Written confirmation or verification or map from the NM EMNRD-Mining and Mineral Division

☐ Yes ☐ No

Within an unstable area.

- Engineering measures incorporated into the design; NM Bureau of Geology & Mineral Resources; USGS; NM Geological Society; Topographic map

☐ Yes ☐ No

Within a 100-year floodplain.

- FEMA map

☐ Yes ☐ No

18.

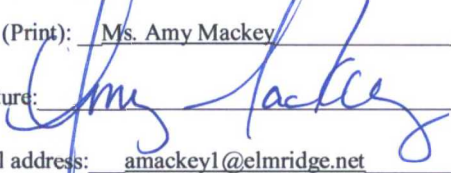
On-Site Closure Plan Checklist: (19.15.17.13 NMAC) Instructions: Each of the following items must be attached to the closure plan. Please indicate, by a check mark in the box, that the documents are attached.☐ Siting Criteria Compliance Demonstrations - based upon the appropriate requirements of 19.15.17.10 NMAC☐ Proof of Surface Owner Notice - based upon the appropriate requirements of Subsection F of 19.15.17.13 NMAC☐ Construction/Design Plan of Burial Trench (if applicable) based upon the appropriate requirements of 19.15.17.11 NMAC☐ Construction/Design Plan of Temporary Pit (for in-place burial of a drying pad) - based upon the appropriate requirements of 19.15.17.11 NMAC☐ Protocols and Procedures - based upon the appropriate requirements of 19.15.17.13 NMAC☐ Confirmation Sampling Plan (if applicable) - based upon the appropriate requirements of Subsection F of 19.15.17.13 NMAC☐ Waste Material Sampling Plan - based upon the appropriate requirements of Subsection F of 19.15.17.13 NMAC☐ Disposal Facility Name and Permit Number (for liquids, drilling fluids and drill cuttings or in case on-site closure standards cannot be achieved)☐ Soil Cover Design - based upon the appropriate requirements of Subsection H of 19.15.17.13 NMAC☐ Re-vegetation Plan - based upon the appropriate requirements of Subsection I of 19.15.17.13 NMAC☐ Site Reclamation Plan - based upon the appropriate requirements of Subsection G of 19.15.17.13 NMAC

19.

Operator Application Certification:

I hereby certify that the information submitted with this application is true, accurate and complete to the best of my knowledge and belief.

Name (Print): Ms. Amy Mackey Title: Administrative Manager

Signature:  Date: 1-22-09

E-mail address: amackey1@clmridge.net Telephone: (505) 632-3476 Ext. 201

20.

OCD Approval: ☐ Permit Application (including closure plan) ☐ Closure Plan (only) ☐ OCD Conditions (see attachment)

OCD Representative Signature: _____ **Approval Date:** _____

Title: _____ **OCD Permit Number:** _____

21.

Closure Report (required within 60 days of closure completion): Subsection K of 19.15.17.13 NMAC

Instructions: Operators are required to obtain an approved closure plan prior to implementing any closure activities and submitting the closure report. The closure report is required to be submitted to the division within 60 days of the completion of the closure activities. Please do not complete this section of the form until an approved closure plan has been obtained and the closure activities have been completed.

☐ Closure Completion Date: _____

22.

Closure Method:

☐ Waste Excavation and Removal ☐ On-Site Closure Method ☐ Alternative Closure Method ☐ Waste Removal (Closed-loop systems only)
☐ If different from approved plan, please explain.

23.

Closure Report Regarding Waste Removal Closure For Closed-loop Systems That Utilize Above Ground Steel Tanks or Haul-off Bins Only:

Instructions: Please indentify the facility or facilities for where the liquids, drilling fluids and drill cuttings were disposed. Use attachment if more than two facilities were utilized.

Disposal Facility Name: _____ Disposal Facility Permit Number: _____

Disposal Facility Name: _____ Disposal Facility Permit Number: _____

Were the closed-loop system operations and associated activities performed on or in areas that *will not* be used for future service and operations?

☐ Yes (If yes, please demonstrate compliance to the items below) ☐ No

Required for impacted areas which will not be used for future service and operations:

- ☐ Site Reclamation (Photo Documentation)
☐ Soil Backfilling and Cover Installation
☐ Re-vegetation Application Rates and Seeding Technique

24.

Closure Report Attachment Checklist: *Instructions: Each of the following items must be attached to the closure report. Please indicate, by a check mark in the box, that the documents are attached.*

- ☐ Proof of Closure Notice (surface owner and division)
☐ Proof of Deed Notice (required for on-site closure)
☐ Plot Plan (for on-site closures and temporary pits)
☐ Confirmation Sampling Analytical Results (if applicable)
☐ Waste Material Sampling Analytical Results (required for on-site closure)
☐ Disposal Facility Name and Permit Number
☐ Soil Backfilling and Cover Installation
☐ Re-vegetation Application Rates and Seeding Technique
☐ Site Reclamation (Photo Documentation)

On-site Closure Location: Latitude _____ Longitude _____ NAD: ☐ 1927 ☐ 1983

25.

Operator Closure Certification:

I hereby certify that the information and attachments submitted with this closure report is true, accurate and complete to the best of my knowledge and belief. I also certify that the closure complies with all applicable closure requirements and conditions specified in the approved closure plan.

Name (Print): _____ Title: _____

Signature: _____ Date: _____

E-mail address: _____ Telephone: _____

New Mexico Office of the State Engineer
Point of Diversion Summary

Back

(quarters are 1=NW 2=NE 3=SW 4=SE)
(quarters are biggest to smallest)

POD Number	Tws	Rng	Sec	q	q	q	Zone	X	Y
SJ 02516 DCL	24N	03W	06	1	3	1			

Driller Licence:

Driller Name:

Drill Start Date:

Log File Date:

Pump Type:

Casing Size:

Depth Well: 1000.

Source: Shallow

Drill Finish Date: 12/31/1955

PCW Received Date:

Pipe Discharge Size:

Estimated Yield:

Depth Water: 650

New Mexico Office of the State Engineer
POD Reports and Downloads

Township: 24N Range: 03W Sections: 17,18

NAD27 X: Y: Zone: Search Radius:

County: Basin: Number: Suffix:

Owner Name: (First) (Last) ☐ Non-Domestic
☐ Domestic ☒ All

POD / Surface Data Report

Avg Depth to Water Report

Water Column Report

Clear Form

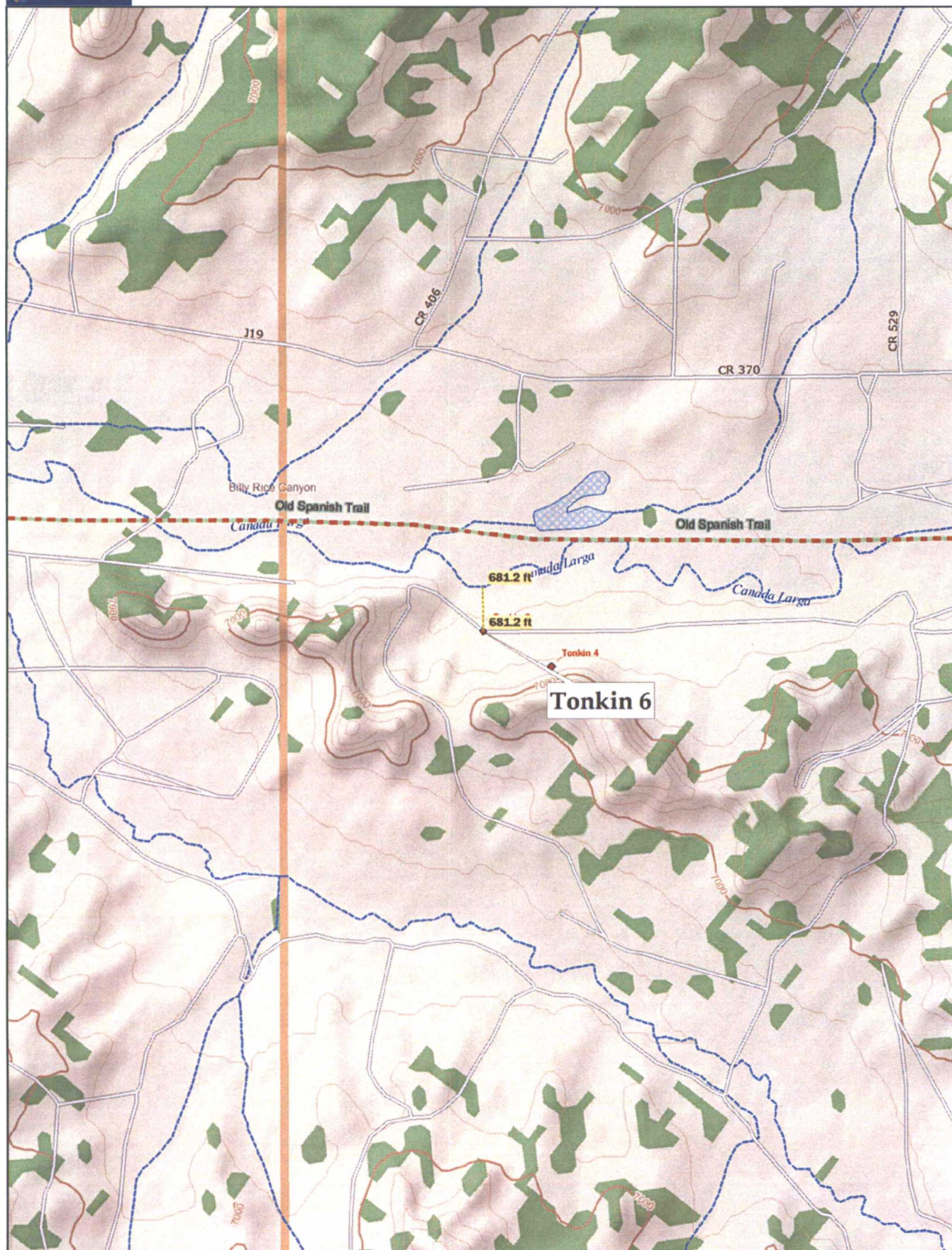
iWATERS Menu

Help

AVERAGE DEPTH OF WATER REPORT 10/30/2008

Bsn	Tws	Rng	Sec	Zone	X	Y	Wells	(Depth Water in Feet)		
								Min	Max	Avg

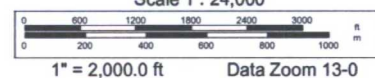
No Records found, try again

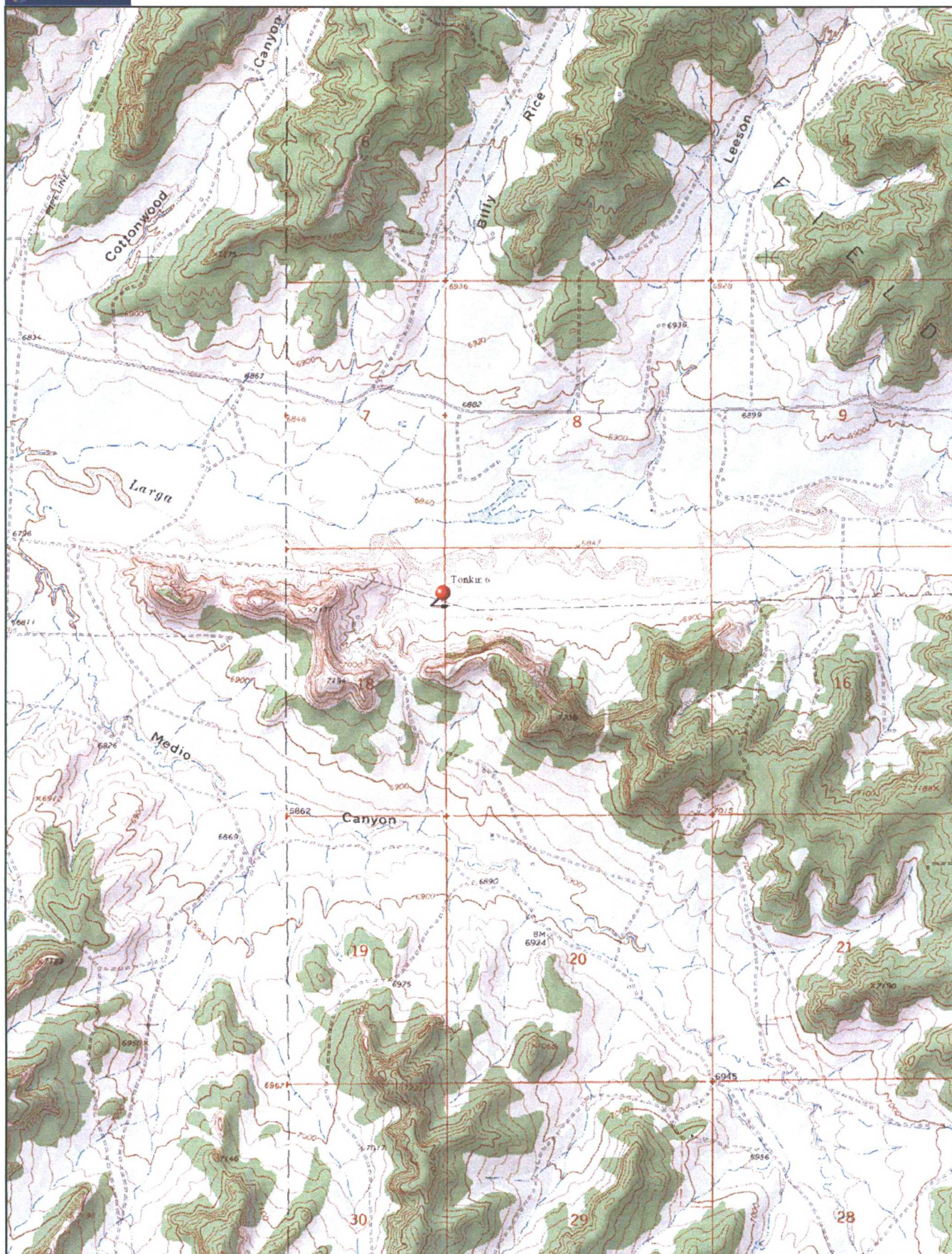


Data use subject to license.

© DeLorme. DeLorme Topo USA® 7.0.

www.delorme.com

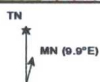




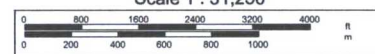
Data use subject to license.

© 2006 DeLorme. Topo USA® 6.0.

www.delorme.com



Scale 1 : 31,250



1" = 2,604.2 ft

Data Zoom 12-6



Tonkin 6

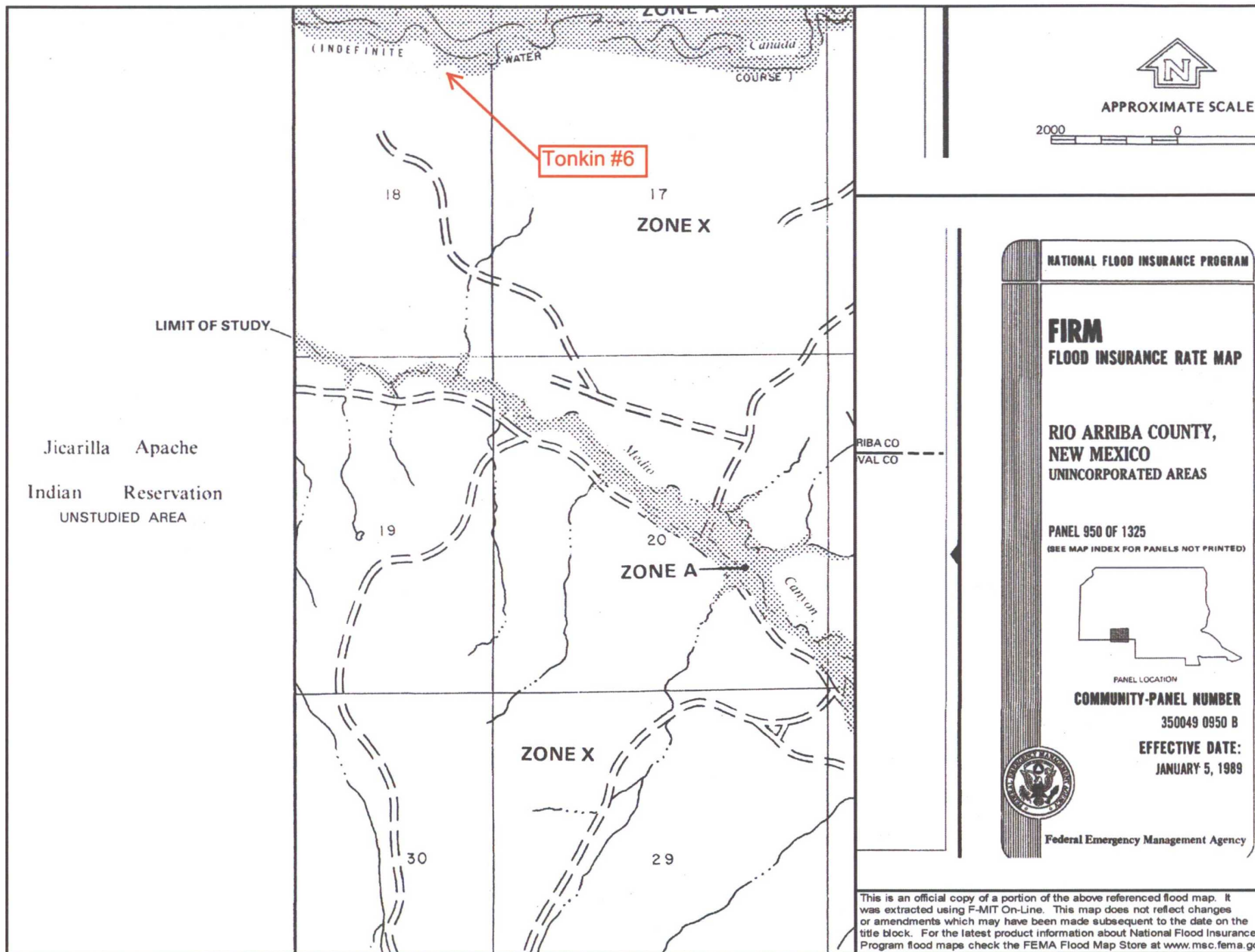
Image NMRGIS
© 2005 Tele Atlas

Google

Pointer: 36°18'52.13"N 107°11'23.76"W elev: 5862 ft

Streaming 100%

Eye alt: 10143 ft



Elm Ridge Exploration Mine Map

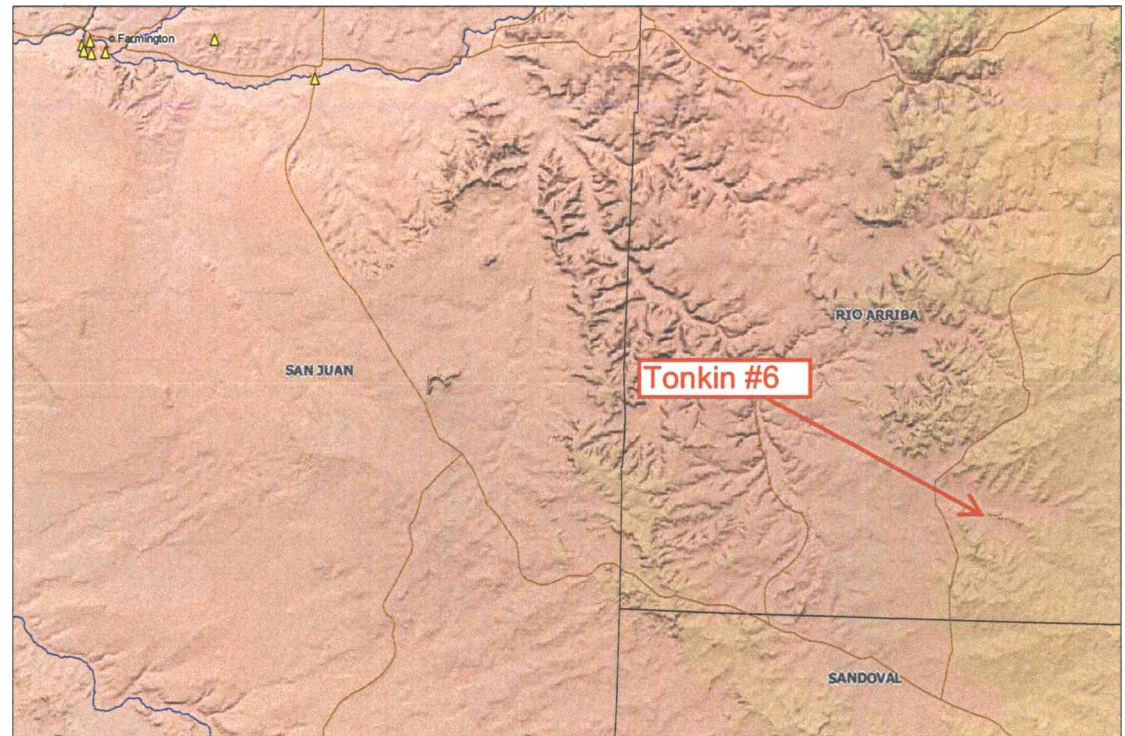
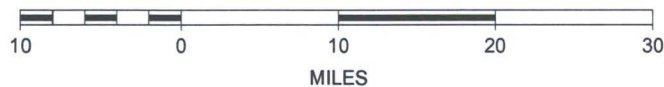
Mines, Mills & Quarries Commodity Groups

-  Aggregate & Stone Mines
-  Coal Mines
-  Industrial Minerals Mines
-  Industrial Minerals Mills
-  Metal Mines and Mill Concentrate
-  Potash Mines & Refineries
-  Smelters & Refinery Ops.
-  Uranium Mines
-  Uranium Mills

Mines, Mills & Quarries Status

-  Active Mining
-  Active Mining, Active Reclamation
-  Permanent Closure, Active Reclamation
-  Permanent Closure, Reclaimed Awaiting Bond Release
-  Temporary Suspension

SCALE 1 : 740,905



Elm Ridge Site Inventory Sheet

• Date: 9/4/18 Initials: sla Time: Started: 11:05 Ended: 11:23
 • Well Name & Number: Tonkin 006
 • API #: 3003924096
 • Lease #: SF-080472A
 • Quarter/Quarter: A Section: 18 Township: 24N Range: 3W
 • Lat: 36.314481° Long: -107.189933° GPS Point ID: T6

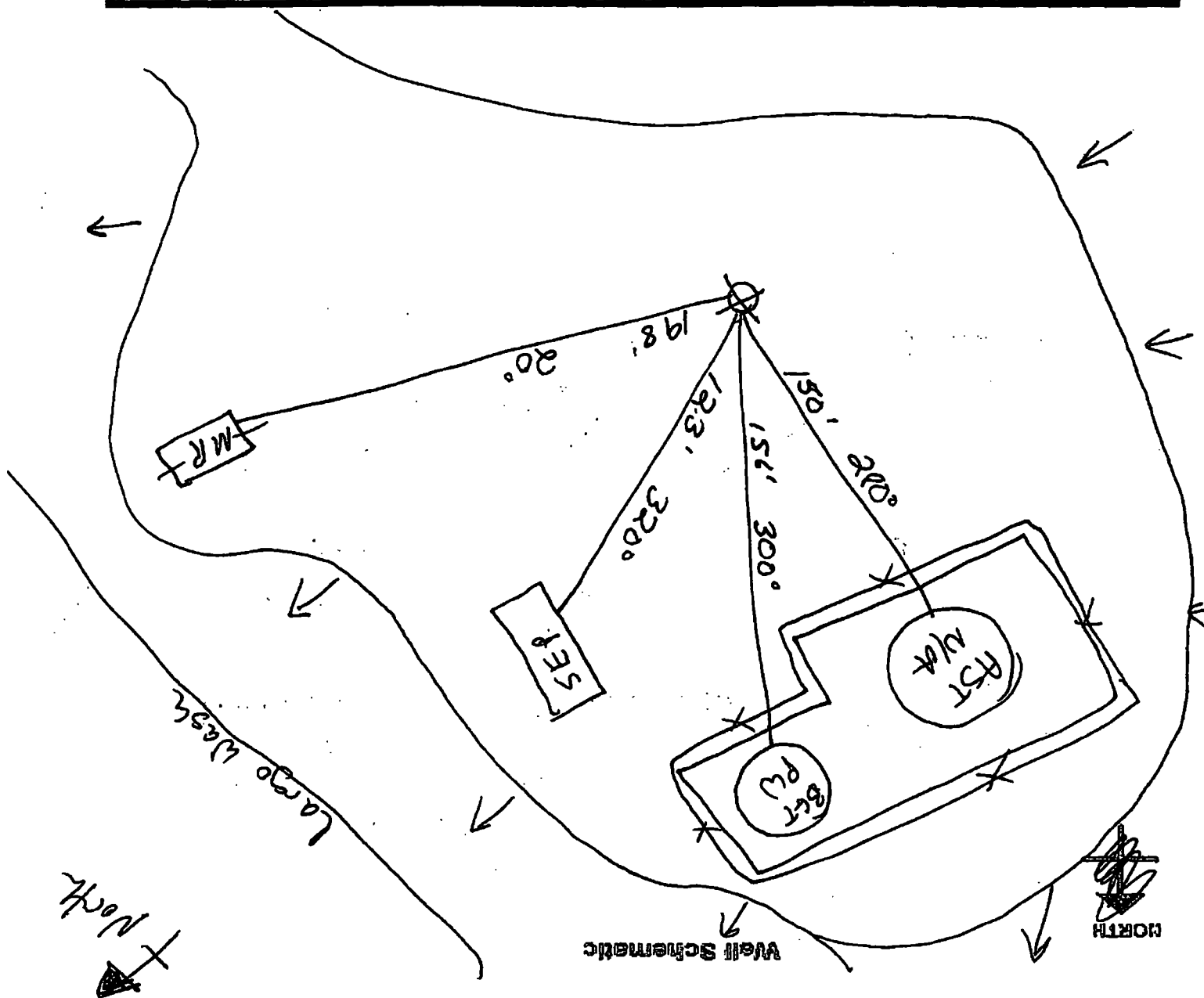
• Pit Tank #1: Manufacturer: N/A
 • Serial #: N/A DOM: N/A Size N/A bbl
 • If N/A - Dimensions: Diameter 12' Height 3'
 • Material: Steel X Galvanized _____ Fiberglass _____
 • Tank Configuration: Double Wall _____ Single Wall X (Buried X or Exposed _____)
 • Visible Walls: Y _____ N X Leak Detection: Y _____ N X
 • Contents: Produced Water X Condensate _____ Recycled Oil _____
 • Tank Top Covering: Solid/Cone-top _____ Netting X (Solid _____ Fiber _____) Chicken Wire
 • Secondary Containment: Yes X No _____
 • Fencing around berm: Yes X No _____
 • Fence Type: Cattle Panel _____ Field Fence X Barbwire _____

~~• Pit Tank #2: Manufacturer: _____~~
~~• Serial #: _____ DOM: _____ Size _____ bbl~~
~~• If N/A - Dimensions: Diameter _____ Height _____~~
~~• Material: Steel _____ Galvanized _____ Fiberglass _____~~
~~• Tank Configuration: Double Wall _____ Single Wall _____ (Buried _____ or Exposed _____)~~
~~• Visible Walls: Y _____ N _____ Leak Detection: Y _____ N _____~~
~~• Contents: Produced Water _____ Condensate _____ Recycled Oil _____~~
~~• Tank Top Covering: Solid/Cone-top _____ Netting _____ (Solid _____ Fiber _____)~~
~~• Secondary Containment: Yes _____ No _____~~
~~• Fencing around berm: Yes _____ No _____~~
~~• Fence Type: Cattle Panel _____ Field Fence _____ Barbwire _____~~

• Above-Ground Tank #1: Manufacturer: Permian Tank & Mfg. Co.
 • Serial #: N/A DOM: 10/70 Size 300 bbl
 • If N/A - Dimensions: Diameter 12' Height 15'
 • Material: Steel X Galvanized _____ Fiberglass _____
 • Contents: Produced Water N/A Condensate N/A (State # GI-3183) Recycled Oil N/A
 • Secondary Containment: Yes X No _____

Schematic Key:

SEP	Separator	Artificial Lift	AL	Condensate Tank	COND
COM	Compressor	Water Pump	METER RUN		
DEH	Dehydrator	Well Head	Water Tank		WATER



BELOW GRADE TANK (BGT) CLOSURE PLAN

SITE NAME:

TONKIN #6

UNIT LETTER A, SECTION 18, TOWNSHIP 24N, RANGE 3W

RIO ARriba COUNTY, NEW MEXICO

LATITUDE 36.314481 LONGITUDE -107.189933

SUBMITTED To:

MR. WAYNE PRICE

NEW MEXICO OIL CONSERVATION DIVISION

1220 SOUTH ST. FRANCIS DRIVE

SANTA FE, NEW MEXICO 87505

(505) 476-3490

SUBMITTED BY:

MS. AMY MACKEY

ELM RIDGE EXPLORATION

P.O. BOX 156

BLOOMFIELD, NEW MEXICO 87413

(505) 632-3476 EXT. 201

JANUARY 2009

**BELOW GRADE TANK (BGT) CLOSURE PLAN
ELM RIDGE EXPLORATION
TONKIN #6
RIO ARriba COUNTY, NEW MEXICO**

TABLE OF CONTENTS

<u>INTRODUCTION</u>	1
<u>SCOPE OF CLOSURE ACTIVITIES</u>	1
<u>REPORTING</u>	3

INTRODUCTION

Elm Ridge Exploration would like to submit a closure plan for the below grade tank (BGT) at the Tonkin #6 well site located in the NE ¼ NE ¼ of Section 18, Township 24N, Range 3W, Rio Arriba County, New Mexico. This closure plan has been prepared in conformance with the closure requirements of 19.15.17.13 NMAC.

SCOPE OF CLOSURE ACTIVITIES

The purpose of this closure plan is to provide the details of activities involved in the closure of the BGT at the Tonkin #6 well site. The following scope of closure activities has been designed to meet this objective:

- 1) Elm Ridge Exploration, or a contractor acting on behalf of Elm Ridge Exploration, will close all of the BGTs currently in service within the five (5) years allotted. Elm Ridge Exploration does not operate any BGTs which would qualify to be upgraded or retrofitted; as such they will be closing all their current BGTs and replacing them with above ground storage tanks.
- 2) Elm Ridge Exploration will close BGTs deemed to be an imminent danger to fresh water, public health, or the environment by an earlier date that the division requires as specified in Subsection A of 19.15.17.13 NMAC.
- 3) Elm Ridge Exploration will close any BGT which demonstrates a compromise of integrity before the five (5) years allotted by the division per Paragraph (6) of Subsection I of 19.15.17.11 NMAC.
- 4) Elm Ridge Exploration will close any BGT within 60 days of cessation of the BGTs operation per Subsection A of 19.15.17.13 NMAC.
- 5) No less than 72 hours and no greater than one (1) week prior to BGT removal Elm Ridge Exploration, or a contractor acting on behalf of Elm Ridge Exploration, will provide written notification to the appropriate division district office as well as a schedule of on-site activities, as in accordance with 19.15.17.13 Subsection J Paragraph (2) NMAC. Written notification will include the name of the well operator, the well's API number, the well's name and number, and the well's unit letter, section, township, and range.
- 6) No less than 24 hours and no greater than one (1) week prior to beginning BGT closure activities Elm Ridge Exploration, or a contractor acting on behalf of Elm Ridge Exploration, will provide written notification to the appropriate surface owner, as in accordance with 19.15.17.13 Subsection J Paragraph (1) NMAC. Elm Ridge Exploration, or a contractor acting on behalf of Elm Ridge Exploration, will notify the surface owner by certified mail, return receipt requested, that the operator plans to close a below-grade tank. The return receipt will be used to ensure that the surface owner has received written notification no less than 24 hours and no greater than one (1) week prior to the beginning of BGT closure activities. Evidence of mailing of the notice to the address of the surface owner shown in the county tax records is sufficient to demonstrate compliance with this requirement. Closure activities that will take place on tribal land will have notifications sent by certified mail, return

receipt requested, to the appropriate tribal office. Elm Ridge Exploration, or a contractor acting on behalf of Elm Ridge Exploration, will notify the Bureau of Land Management (BLM) of closure activities for wells located on federal land per a Sundry Notice, as in accordance with 19.15.17.13 Subsection J Paragraph (1) NMAC. All notices will be sent in such a way that the surface owner received notice at least 24 hours prior to the beginning of closure activities.

- 7) Elm Ridge Exploration, or a contractor acting on behalf of Elm Ridge Exploration, will remove all liquids, and/or sludge, if applicable, prior to closure. Material will be disposed of at Envirotech's Landfarm #2, Permit # NM-01-0011, TNT Environmental Inc. Landfarm, Permit # NM-01-0008, Industrial Ecosystems Inc. (IEI) Landfarm, Permit # NM-01-0010B or Basin Disposal, Permit # NM-01-0005, depending on the consistence of the material removed, as in accordance with 19.15.17.13 Subsection E Paragraph (1) NMAC .
- 8) Elm Ridge Exploration, or a contractor acting on behalf of Elm Ridge Exploration, will remove all on-site equipment associated with this BGT that is no longer required for some other purpose, as in accordance with 19.15.17.13 Subsection E Paragraphs (3) NMAC.
- 9) If applicable, any liners or leak detection systems removed from a BGT closure will be cleaned off and disposed of at San Juan County Regional Landfill in accordance with Subparagraph (m) of Paragraph (1) of Subsection D of 19.15.9.712 NMAC.
- 10) Elm Ridge Exploration, or a contractor acting on behalf of Elm Ridge Exploration, will obtain prior approval from the OCD to dispose, recycle, reuse, or reclaim the BGT. Elm Ridge Exploration, or a contractor acting on behalf of Elm Ridge Exploration, will provide the OCD with documentation concerning the final disposition of the BGT with the closure report.
- 11) Once the BGT is removed a five (5)-point composite sample will be collected from directly below the tank or below the leak detection system if present. Grab samples will be collected from any area that are wet, discolored, or showing other evidence of a release. All samples being collected will be analyzed for benzene and total BTEX via USEPA Method 8021B, TPH via USEPA Method 418.1, and chlorides via USEPA 300.1, as in accordance with 19.15.17.13 Subsection E Paragraph (4) NMAC.
- 12) Depending on soil sample results the area will be either backfilled or the area will be excavated.
 - a. If soil samples do not exceed the regulatory standards of 0.2 mg/kg benzene, 50 mg/kg BTEX, 100 mg/kg TPH, and 250 mg/kg or background concentration of chlorides, as in accordance with 19.15.17.13 Subsection E Paragraph (4) NMAC.
 - i. Elm Ridge Exploration, or a contractor acting on behalf of Elm Ridge Exploration, shall submit a Form C-141 with the laboratory results so that the division may review the results to determine if additional delineation is required in accordance with Paragraph (5) of Subsection E of 19.15.17.13 NMAC.
 - ii. Elm Ridge Exploration, or a contractor acting on behalf of Elm Ridge Exploration, will backfill the excavation or impacted area with non-waste containing, earthen material, in accordance with 19.15.17.13

Subsection E Paragraph (6) NMAC. A soil cover shall be installed for all backfilled excavations consisting of the background thickness of topsoil or one foot of suitable material to establish vegetation at the site, whichever is greater in accordance with Subsections H of 19.15.17.13 NMAC. The operator shall construct the soil cover to the site's existing grade and prevent ponding of water and erosion of the cover material.

- iii. All areas of the well site that are no longer utilized on a day to day basis for the production of oil and/or gas, Elm Ridge Exploration, or a contractor acting on behalf of Elm Ridge Exploration, will substantially restore, recontour, and re-vegetate the areas, in accordance with 19.15.17.13 Subsections G and I NMAC. The operator shall notify the division when it has re-seed and when it has achieved successful re-vegetation. For re-vegetation methods, please see attached re-vegetation plan.
- b. If soil samples exceed the regulatory standards stated above.
 - i. Elm Ridge Exploration will submit a Release Notification by Form C-141 with the appropriate analytical laboratory results to the appropriate division district office, in accordance with 19.15.17.13 Subsection E Paragraph (4) NMAC.
 - ii. In accordance with Paragraph (5) of Subsection E of 19.15.17.13 NMAC, once the operator or the OCD has determined that a release has occurred, Elm Ridge Exploration, or a contractor acting on behalf of Elm Ridge Exploration, will comply with rule 19.15.3.116 NMAC and 19.15.1.19 NMAC as appropriate.

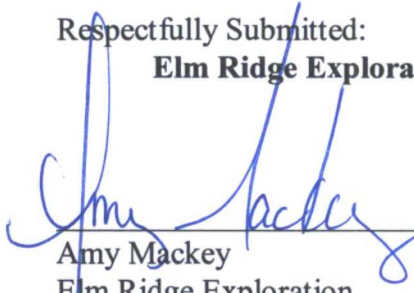
REPORTING

Elm Ridge Exploration will submit a closure report within 60 days following the BGT closure. The closure report will consist of a form C-144 with all supporting data and a form C-141 with all supporting data. The supporting data will include proof of closure notice to the surface owner and the OCD, confirmation sampling analytical results, a site diagram, soil backfilling and cover installation, re-vegetation rates, re-seeding techniques, and site reclamation photo documentation if applicable, along with all other information related to the onsite activities.

We appreciate the opportunity to be of service. If you have any questions or require further information, please do not hesitate to contact our office at (505) 632-3476 Ext. 201.

Respectfully Submitted:

Elm Ridge Exploration



Amy Mackey
Elm Ridge Exploration

Elm Ridge Exploration

Re-Seeding Techniques and Seed Mixture Ratios

These applied practices by Elm Ridge Exploration will at a minimum comply with the New Mexico Oil Conservation Divisions rule 19.15.17.13, Subsection I NMAC Elm Ridge Exploration has adopted these re-seeding application techniques, ratios and mixtures as their standard operating procedures.

1. The first growing season after closure of a below grade tank or pit, all areas of the well site not utilized for the production of oil and/or gas on a daily basis will be re-seeded with the specified seed mixture.
2. The seed mixture used will be certified with no primary or secondary noxious weeds in seed mixtures. The seed labels from each bag shall be available for inspection while seed is being sown.
3. The operator shall accomplish seeding by drilling on the contour whenever practical or by other division-approved methods. The operator shall obtain vegetative cover that equals 70% of the native perennial vegetative cover (un-impacted by overgrazing, fire or other intrusion damaging to native vegetation) consisting of at least three native plant species, including at least one grass, but not including noxious weeds, and maintain that cover through two successive growing seasons. During the two growing seasons that prove viability, there shall be no artificial irrigation of the vegetation.
4. Hand seeding with hydro-mulch, excelsior netting or mulch with netting is required on the cut/fill slopes. Mulch will be spread at a rate of 2,000-3,000 pounds per acre.
5. Compacted areas determined by visual inspection will be ripped to a depth of twelve (12) inches below ground surface and disked to a depth of six (6) inches before seeding. Seeding shall be done with a disk type drill with two (2) boxes for various seed sizes. The drill rows shall be eight (8) to ten (10) inches apart. Seed shall be planted at no less than one-half (1/2) inch deep or more than one (1) inch deep. The seeder shall be followed with a drag, packer, or roller to ensure uniform coverage of the seed and adequate compaction. Drilling shall be done on the contour where possible, but not up and down the slope.
6. Where slopes are too steep for contour drilling a hand seeder shall be used. Seed shall be covered to the depth stated above by whatever means is practical. If the seed is unable to be covered by the means listed above, the prescribed seed mixture amount will be doubled.

7. Elm Ridge Exploration shall repeat seeding or planting until it successfully achieves the required vegetative cover of 70% of the native perennial vegetation cover.
8. Upon abandonment of a well site, if the retention of the access road is not considered necessary for the management and multiple uses of the natural resources, or by the surface owner, it will be ripped a minimum of twelve (12) inches in depth. After ripping, water bars will be installed. All ripped surfaces are to be protected from vehicular travel by construction of a dead end ditch and earthen barricade at the entrance to these ripped areas. Re-seeding of areas affected by the ditch and barriers will be re-seeded if necessary.
9. Elm Ridge Exploration, or a contractor acting on behalf of Elm Ridge Exploration, will inform the division once successful re-vegetation has occurred.

Elm Ridge Exploration

San Juan Basin

Below Grade Tank Maintenance and Operating Plan

In accordance with Rule 19.15.17 the following information describes the operation and maintenance of a Below Grade Tank (BGT) on Elm Ridge Exploration locations. This particular location does not meet the siting criteria to operate a BGT, and thus will be closing the BGT within five (5) years, or upon failure of integrity, and replacing it with an above ground storage tank.

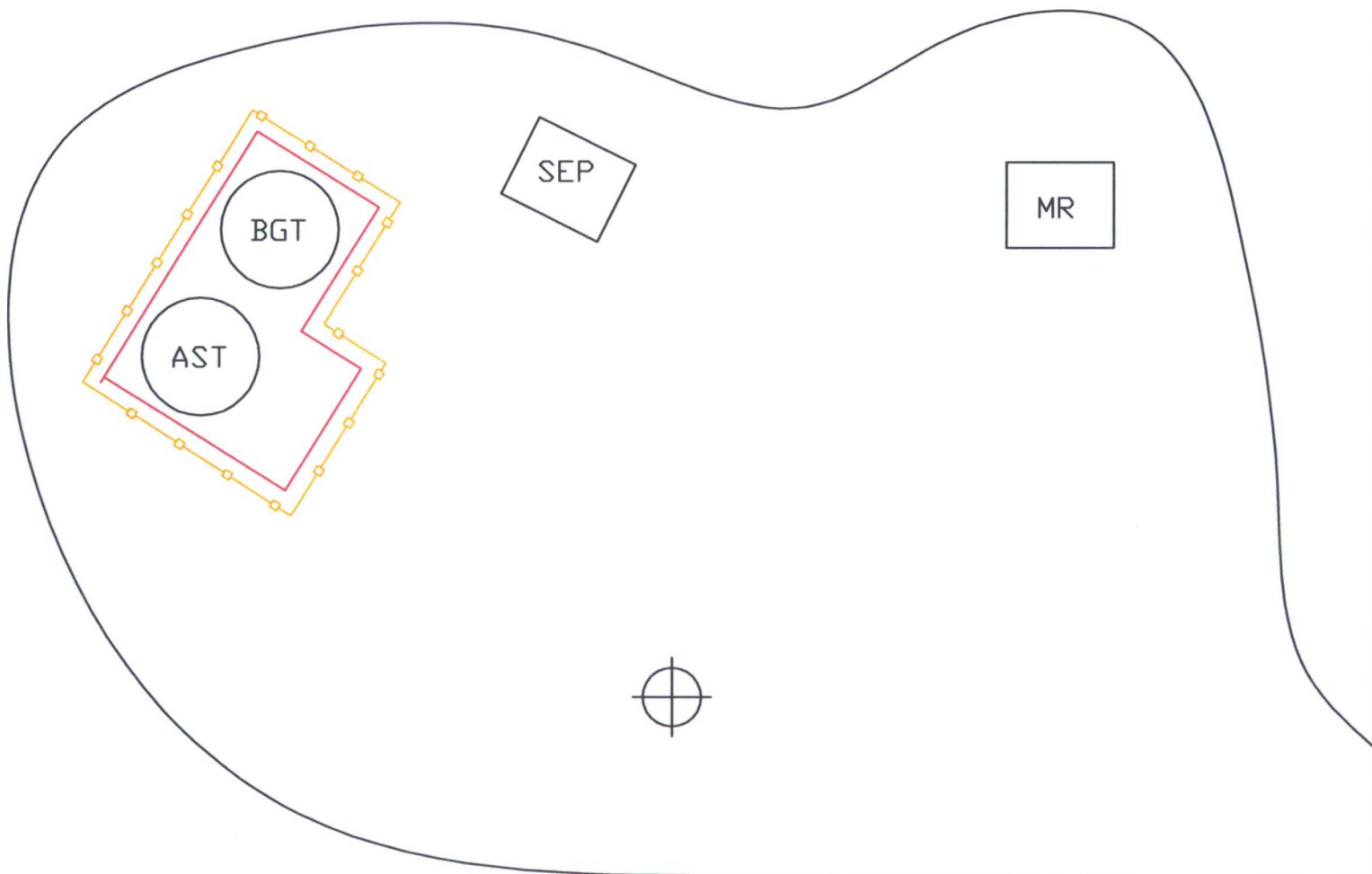
GENERAL PLAN:

1. Elm Ridge Exploration, or a contractor representing Elm Ridge Exploration, will operate and maintain a BGT to contain liquids and solids to prevent contamination of fresh water and to protect public health and environment. This will be accomplished by performing monthly inspections of the BGT, any liners or leak detection if applicable, netting, secondary containment, fencing, and maintaining adequate freeboard.
2. Elm Ridge Exploration, or a contractor representing Elm Ridge Exploration, shall not allow a BGT to overflow or allow surface water run-on to enter the BGT. This will be accomplished by a secondary containment consisting of a soil berm around the BGT that will be monitored by monthly inspections. Overflowing will be prevented by maintaining an adequate freeboard of eight (8) inches, maintained by monthly inspections. This process will be performed on the current BGT located at this well site.
3. Elm Ridge Exploration, or a contractor representing Elm Ridge Exploration, shall continuously remove any visible or measurable layer of oil from the fluid surface of a BGT in an effort to prevent the accumulation of oil over time.
4. Elm Ridge Exploration, or a contractor representing Elm Ridge Exploration, shall inspect the BGT at least once monthly and maintain a written record of each inspection for at least five (5) years. The monthly inspection form to be used by Elm Ridge Exploration is attached to this document.
5. Elm Ridge Exploration, or a contractor representing Elm Ridge Exploration, shall maintain adequate freeboard to prevent overtopping of the BGT. The standard freeboard to be maintained by Elm Ridge Exploration is eight (8) inches.
6. Elm Ridge Exploration, or a contractor representing Elm Ridge Exploration, shall maintain an expanded metal covering on the BGT.

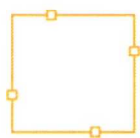
7. Elm Ridge Exploration will not discharge into or store any hazardous wastes into the BGT.
8. If Elm Ridge Exploration, or a contractor representing Elm Ridge Exploration, determines that a BGT has developed a leak below the liquid's surface, then Elm Ridge Exploration, or a contractor representing Elm Ridge Exploration, will notify the appropriate division office within 48 hours of discovering the leak. Elm Ridge Exploration, or a contractor representing Elm Ridge Exploration, shall remove all liquids above the damage or leak line within 48 hours in accordance with Subsection A of 19.15.17.12 NMAC. The damaged tank will then be removed, and closure activities will begin in accordance with the submitted closure plan.
9. Elm Ridge Exploration will close any BGT within 60 days of cessation of the BGTs operation per Subsection A of 19.15.17.13 NMAC.
10. Elm Ridge Exploration, or a contractor representing Elm Ridge Exploration, will close the BGT within the NMOCD allotted five (5) years, within 60 days of cessation of operation of the BGT or upon failure of integrity, and put into service an above ground storage tank to meet the needs previously fulfilled by the BGT.

Figure A, Site Map

Figure B, Monthly BGT Inspection Form



LEGEND



4' Tall Hogwire
Fencing



Berm



Well Head

SITE MAP
ELM RIDGE EXPLORATION
TONKIN #6
SEC 18 TWN 24N RGE 3W
RIO ARRIBA COUNTY, NEW MEXICO

SCALE: NTS

PROJECT N003056-0135

FIGURE NO. A

REV

REVISIONS

NO.	DATE	BY	DESCRIPTION
MAP DRWN	TLM	12/18/08	BASE DRWN

ENVIRONMENTAL SCIENTISTS & ENGINEERS
ENVIROTECH

5796 U.S. HIGHWAY 64, FARMINGTON, NM 87410 505-632-0615

Elm Ridge Exploration, LLC

Monthly Below Grade Tank Inspection Form

Inspection Performed By: _____ Date: _____

Well Site Name: _____

Unit: _____ Section: _____ Township: _____ Range: _____ County: _____

Quarter Footage: _____

Latitude: _____ Longitude: _____

Below Grade Tank

Construction Material of BGT (circle one): Steel Fiberglass Galvanized Other: _____

Tank Capacity (BBLs): _____

Status of Tank (circle one): NA poor fair good excellent

Leaks Detected (circle one): Yes No Unknown

Liquid level in tank from the top: _____

Recent overflow detected (circle one): Yes No Unknown

BGT Cover present: Yes No NA

Cover Type (circle one): wire mesh steel mesh fibrous netting other: _____

Berm Present (circle one): Yes No

Secondary Containment

Type of secondary containment: _____

Status of secondary containment (circle one): NA poor fair good excellent

Fencing

Fencing Present (circle one): Yes No

Describe Fencing: _____

Status of Fencing (circle one): NA poor fair good excellent

*Maintain this document on record for a minimum of five (5) years from the date performed.

**OCD Aztec District III
ELM RIDGE Checklist
Below Grade Tank Closure Plans**

19.15.17.9 Permit application

- ☒ Signed C-144 (Page 5 of C-144)
- ☒ Site Specific Hydrogeology (Iwaters)

19.15.17.10 Siting requirements

- ☒ Proximity to watercourses (Topo map)
- ☒ Proximity to Permanent Structure (Aerial Map)
- ☒ Proximity to Flood Plain Map (Aerial Map)
- ☒ Proximity to Subsurface Mines Map (Aerial Map)

19.15.17.13 Closure Plan

- ☒ Below Grade Tank Closure Plan

19.15.17.12 Operating and Maintenance Plan

- ☒ Below Grade Tank Operating and Maintenance Plan

Requirements: (Application Marked Closure Plan Only)

Registration Date: VF (CS) 5/17/19